



# VPH INTERNATIONAL OÜ

Narva mnt 5, Tallinn -10117, Estonia [info@vphinternational.com](mailto:info@vphinternational.com)

**+372 56170771**



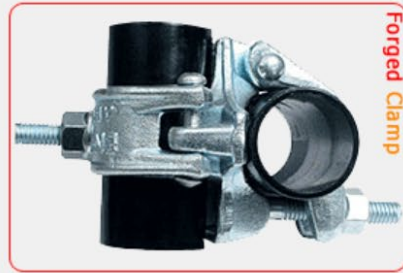
**Scaffolding Systems**



**Formwork Accessories**

Products from India

## Forged Clamps



Forged Clamp

Name :: Double Coupler  
Size :: (EN - 74/BS-1139)



Forged Clamp

Name :: Swivel Coupler  
Size :: (EN - 74/BS-1139)



Steel Clamp

Name :: Double Coupler  
(for pipe OD 48.3mm)  
Size :: (EN - 74/BS-1139)



Steel Clamp

Name :: Swivel Coupler  
Size :: (EN - 74/BS-1139)



Steel Clamp

Name :: Putlog Head Adapter  
(for pipe OD-48.3mm)  
Size :: (EN - 74/BS-1139)



Steel Clamp

Name :: Sleeve Coupler  
(for pipe OD-48.3mm)  
Size :: (EN - 74/BS-1139)



Steel Clamp

Name :: Girder Coupler  
(for Od 48.3mm)  
Size :: (AS - 1576.2)



Steel Clamp

Name :: Support Clamp  
(for pipe OD-48.3mm)  
Size :: (BS-1139)



Steel Clamp

Name :: Joint Pin  
(for pipe OD 48mm & 42.3mm)  
Size :: (EN-74/BS-1139)



Steel Clamp

Name :: Putlog Coupler  
(for pipe OD 48.3mm)  
Size :: (EN - 74/BS-1139)



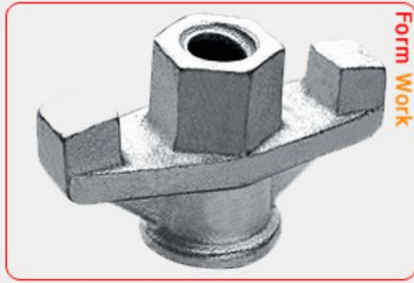
Steel Clamp

Name :: Toe Board Bracket  
(pipe OD-60.3mm)  
Size :: (BS-1139)

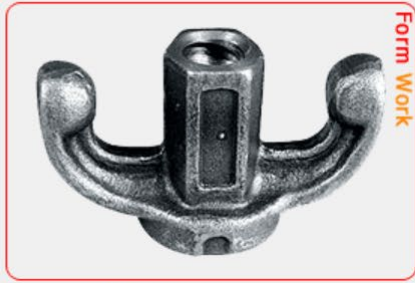


Steel Clamp

Name :: Fencing Coupler  
(for Od 48.3mm)  
Size :: (BS-1139)



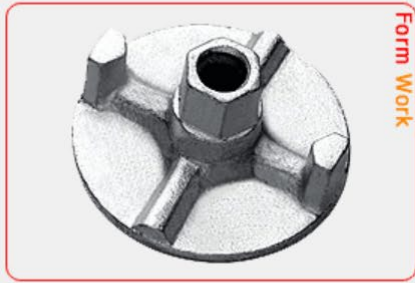
Name :: Wing Nut  
Material :: Malleable Cast Iron  
Weight :: 0.320 KG.  
Working Load:: 90 KN



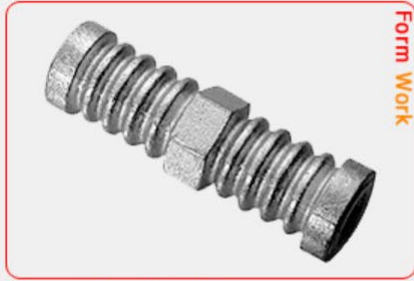
Name :: Forged Nut  
Material :: EN-8  
Weight :: 0.350 KG.  
Working Load:: 90 KN



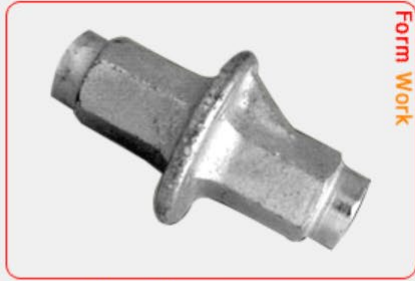
Name :: Three Wing Anchor Nut  
Material :: Malleable Cast Iron  
Size :: 100 mm  
Weight:: 0.640 KG



Name :: Two Wing Anchor Nut  
Material :: 70 / 100 mm  
Size :: 0.320  
Weight:: 90 KN



Name :: Water Barrier  
Material :: Malleable Cast Iron  
Size :: 0.500 KG.



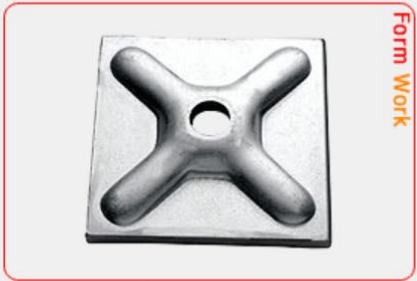
Name :: Water Barrier with Disc  
Material :: 116 mm Length  
Weight :: 0.540 KG.



Name :: Tie Bar Connector  
Material :: Mild steel  
Weight :: 100 mm Length.  
Working Load:: 0.450 KG



Name :: Hexagonal Nut  
Material :: Mild Steel  
Weight :: 50 mm Length  
Working Load:: 0.210 KG



Name :: Water Plate  
Material :: St-37  
Size :: 120 x 120 x 6  
Weight :: 0.660 / 1.10 KG.



Name :: Cold Rolled Tie Rod  
Material :: 15 mm, Tp to 6 Mtr. Length  
Size :: 90 KN  
Weight:: 1.47 K.G/ Mtr.

## Cuplock System



Cuplock System

Name :: Vertical/ standard  
(Open End)

Item Code	Size (Mtr.)	Wt. (Kg)
3011	1.0	5.00
3012	1.3	6.30
3013	1.5	7.90
3014	1.8	9.10
3015	2.0	10.90
3016	2.3	11.90
3017	2.5	13.40
3018	3.0	16.10



Cuplock System

Name :: Ledger

Item Code	Size (Mtr.)	Wt. (Kg)
3021	0.60	2.60
3022	0.90	3.70
3023	1.00	4.10
3024	1.20	4.80
3025	1.30	5.20
3026	1.60	6.20
3027	1.80	6.90
3028	2.50	9.50



Cuplock System

Name :: Inside Board Transom

Item Code	Size (Mtr.)	Wt. (Kg)
3031	1.621	7.50



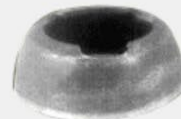
Cuplock System

Name :: Intermediate Transom

Item Code	Size (Mtr.)	Wt. (Kg)
3041	0.565	2.80
3042	0.795	3.70
3043	1.200	5.20
3044	1.300	5.50
3045	1.800	7.30
3046	2.500	16.50



Top Cup



Bottom Cup



Ledger Blade

Cuplock System

## Quick Lock System



Name :: Vertical / standard  
(with round spigot end)

Item Code	Size (Mtr.)	Wt. (Kg)
4011	1.0	6.20
4012	2.0	11.70
4013	2.5	14.40
4014	3.0	17.20



Name :: Trasom

Item Code	Size (Mtr.)	Wt. (Kg)
4031	0.8	5.90
4032	1.2	9.70
4033	1.8	1310



Name :: Walk Through Frame

Item Code	Size (Mtr.)	Wt. (Kg)
4021	1.2	5.55
4022	1.8	6.95
4023	2.4	8.85



Name :: Face Brace

Item Code	Size (Mtr.)	Wt. (Kg)
4041	2.74	10.90
4042	3.54	13.10



Name :: Stage Bracket

Item Code	Size (Mtr.)	Wt. (Kg)
4061	1.254	3.52
4062	1.803	5.20
4063	2.413	7.00



Name :: Ready Lock Transom

# Prop Clamp



Light Prop

Name :: Heavy Duty Prop

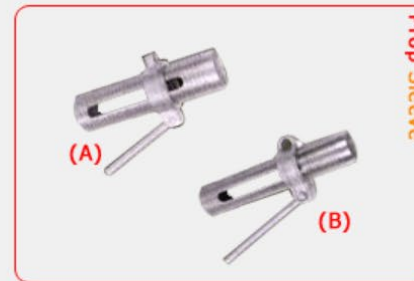
Item Code	Close Ht. / Open Ht. (Mtr.)	Wt. (Kg)
7021	1.07/ 1.82	11.00
7022	1.75/ 3.12	16.70
7023	1.98/ 3.35	18.40
7024	2.59/ 3.95	20.20
7.25	3.20/ 4.87	24.20



Light Prop

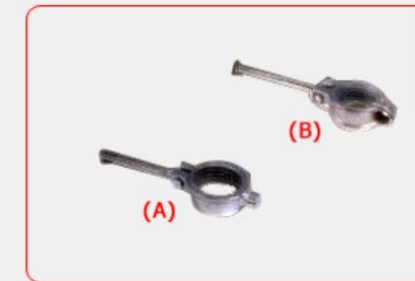
Name :: Light Duty Prop

Item Code	Close Ht. / Open Ft. (Mtr.)	Wt. (Kg)
7031	0.25 / 0.50	3.30
7032	0.50 / 0.80	4.10
7033	0.70 / 1.30	5.00
7034	1.00 / 1.30	5.90
7035	1.60 / 2.90	9.70
7036	2.00 / 3.60	10.70



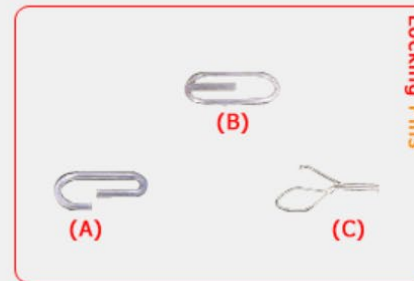
Prop Sleeve

Name :: Prop Sleeve



Prop Nut

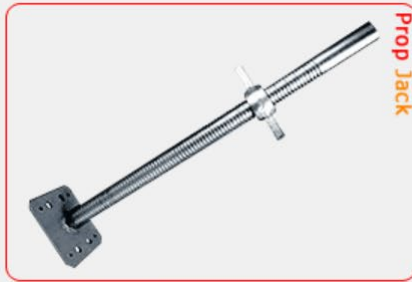
Name :: Prop Nut



Locking Pins

Name :: Locking Pins





Prop Jack

Name :: Adjustable Base Jack  
(Pipe OD 38 mm)

Item Code	TL/ AL (Mtr)	Wt. (Kg)
6011	0.450/ 0.350	2.60
6012	0.550/ 0.450	2.95
6013	0.650/ 0.550	3.30
6014	0.750/ 0.650	3.70

Name :: Adjustable Base Jack  
(Pipe OD 34 mm)

Item Code	TL/ AL (Mtr)	Wt. (Kg)
6021	0.450/ 0.350	2.45
6022	0.550/ 0.450	2.75
6023	0.650/ 0.550	3.10
6024	0.750/ 0.650	3.40

Name :: Adjustable Base Jack  
(Pipe OD 32 mm)

Item Code	TL/ AL (Mtr)	Wt. (Kg)
6031	0.500/ 0.400	4.60
6032	0.600/ 0.500	5.35
6033	0.800/ 0.700	6.70
6034	1.000/ 0.800	8.12

Base Size 150 x 150 x 6 (mm)



Prop Jack

Name :: Adjustable Base Jack  
(Pipe OD 38 mm)

Item Code	TL/ AL (Mtr)	Wt. (Kg)
6061	0.450/ 0.350	1.60
6062	0.500/ 0.450	1.95
6063	0.650/ 0.550	2.30
6064	0.750/ 0.650	2.70

Name :: Adjustable Base Jack  
(Pipe OD 34 mm)

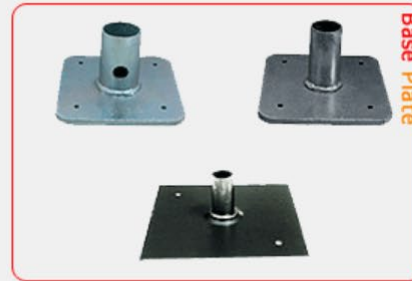
Item Code	TL/ AL (Mtr)	Wt. (Kg)
6071	0.450/ 0.350	1.45
6072	0.550/ 0.450	1.75
6073	0.650/ 0.550	2.10
6074	0.750/ 0.650	2.40



Prop Jack

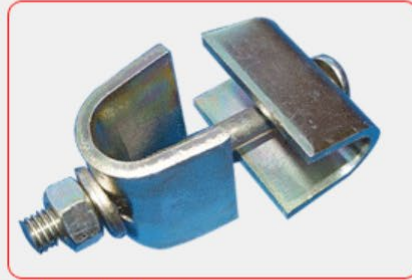
Name :: Adjustable U - Head  
Pipe OD 38 mm

Item Code	TL/ AL (Mtr)	Wt. (Kg)
6051	100	4.70
6052	150	5.75
6053	200	6.80



Base Plate

## Universal Clamp



Name :: Universal Clamp  
Size :: (EN - 74/BS-1139)



Name :: Ladder Clamp  
Size :: (EN - 74/BS-1139)

## Fabrication



Fabrication

Name :: Fork Head  
Size :: (EN - 74/BS-1139)



Fabrication

Name :: Fork Head  
Size :: (EN - 74/BS-1139)



Fabrication

Name :: Tri Prop Stand  
Size :: (EN - 74/BS-1139)

