

2022 Bear Population Trend Analysis



Cody Norton
Wildlife Division
March 10, 2022



Bear Management Units



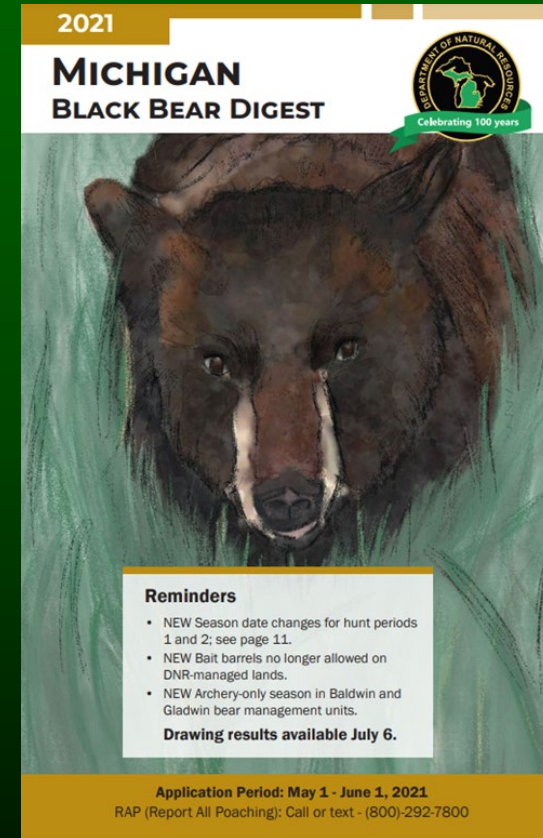
License Quotas & Regulations

- The Process
 - WLD field staff
 - LED staff
 - Internal Bear Workgroup
 - Tribal governments
 - Bear Forum
 - Natural Resources Commission & Director



2023-24 Regulations Cycle

- Bear Forum
 - August 2022
- Natural Resources Commission & Director
 - For Information: February 2023
 - For Action: March 2023

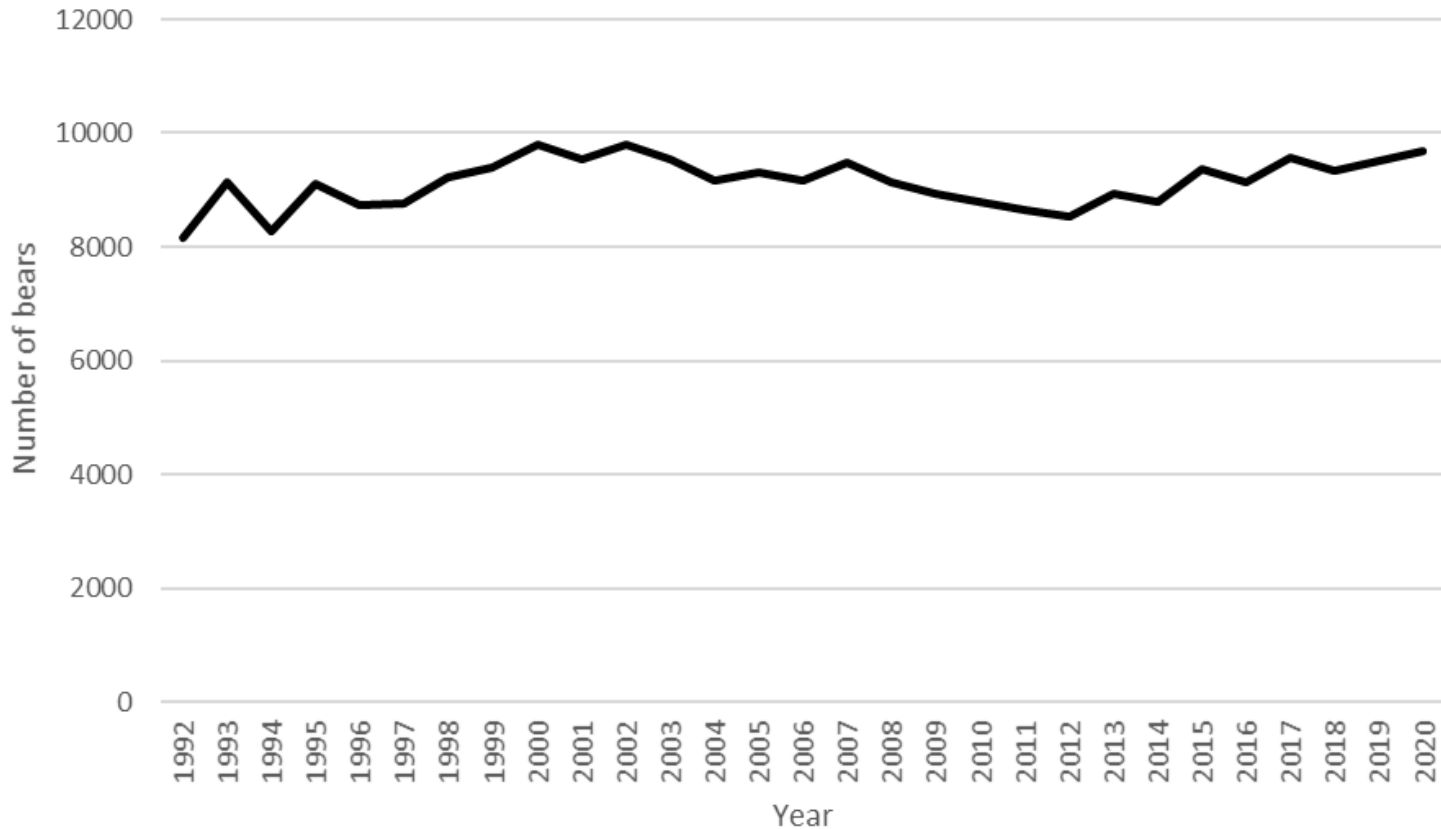


Upper Peninsula Population Trajectory Goal

- To continue to increase the bear population, but at a slower rate, by increasing harvest slightly



Upper Peninsula



9,673 bears in 2020. Up 13% since 2012

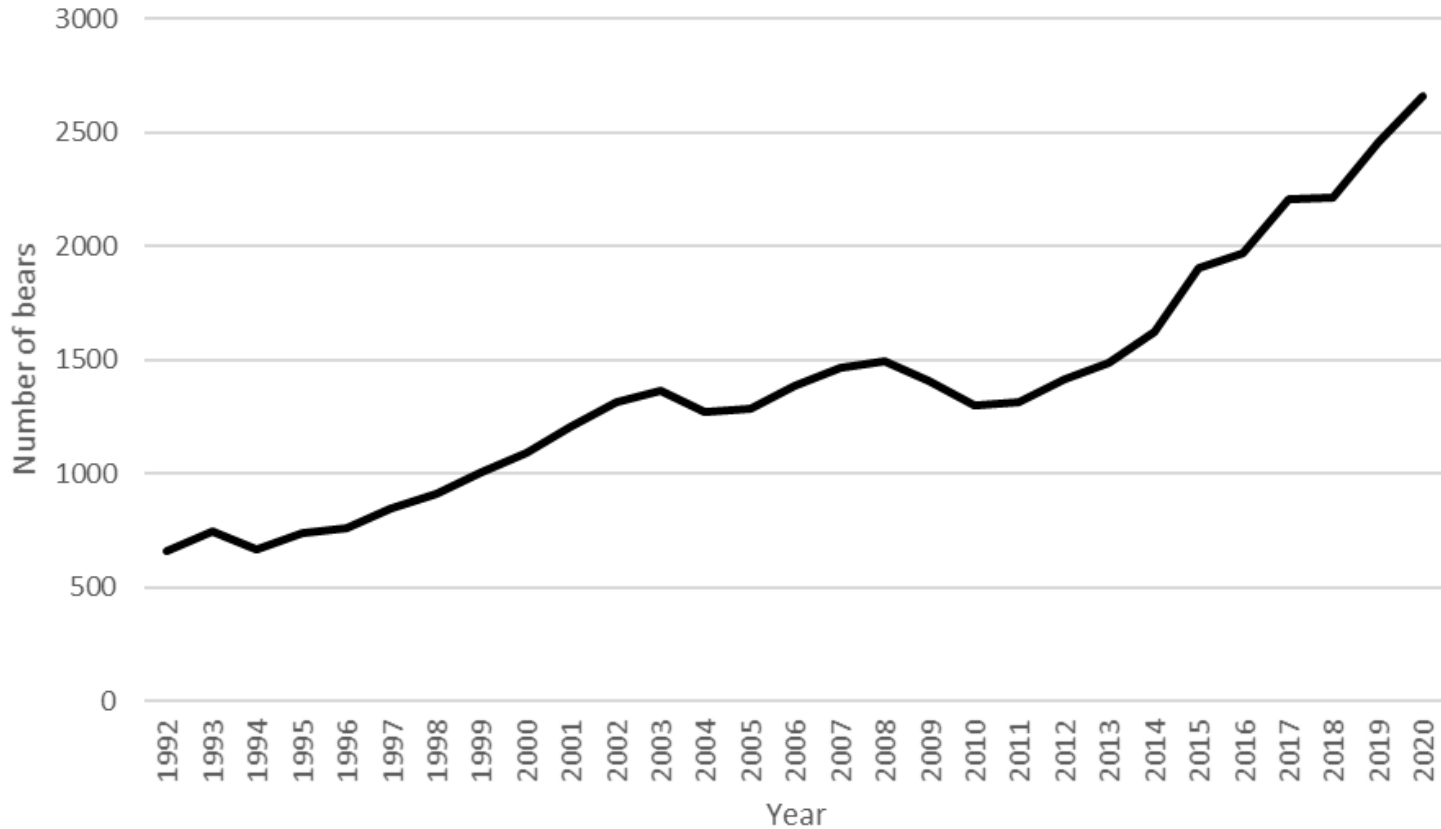


Northern Lower Peninsula Population Trajectory Goal

- To slow the population growth to eventually achieve a stable population



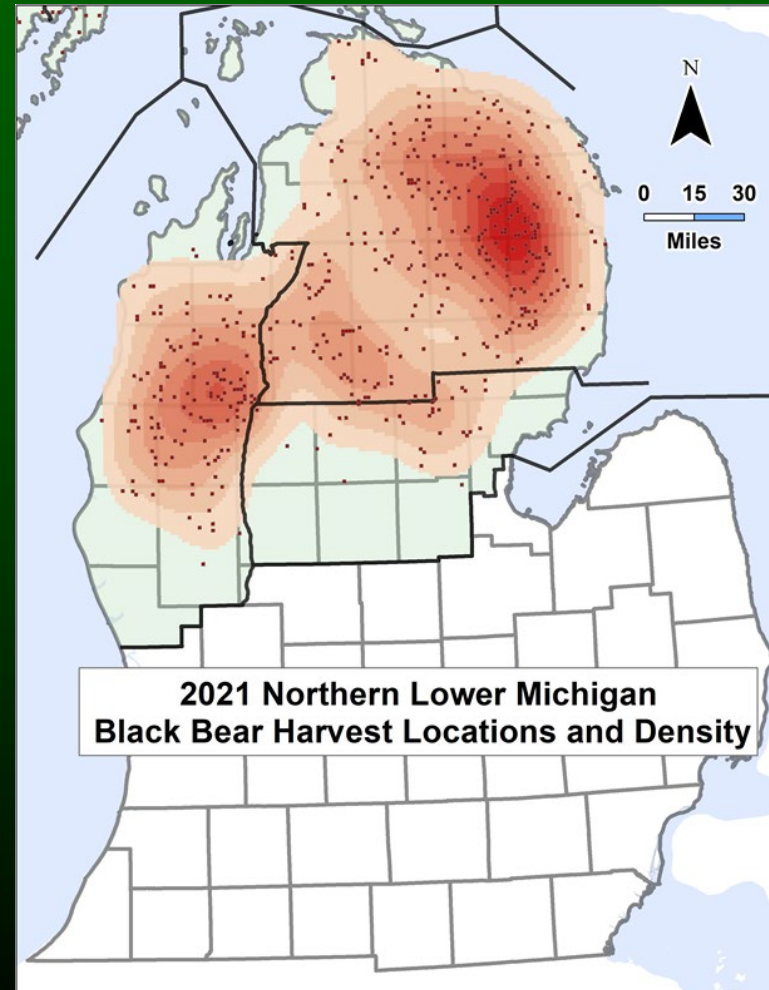
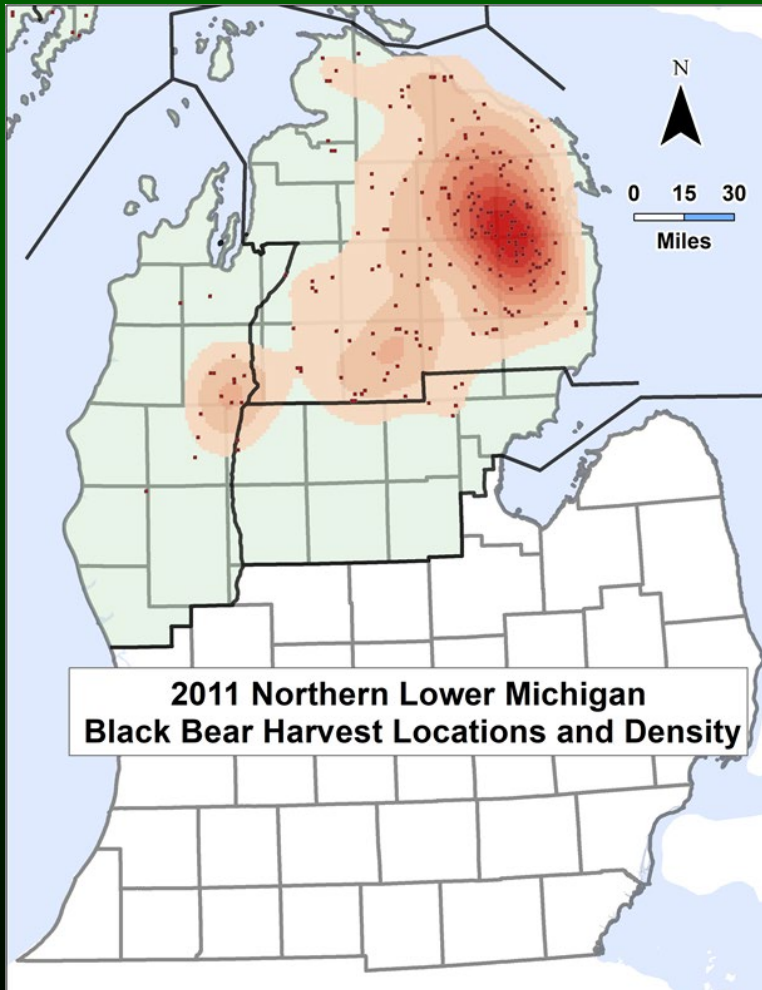
Northern Lower Peninsula



2,663 bears in 2020. Up 88% since 2012



Lower Peninsula Distribution



Other Indices Used

- Hunter opinion
- Hunter effort
- Hunter success rates
- Square miles/bear harvested
- Nuisance bear complaints
- Habitat and mast

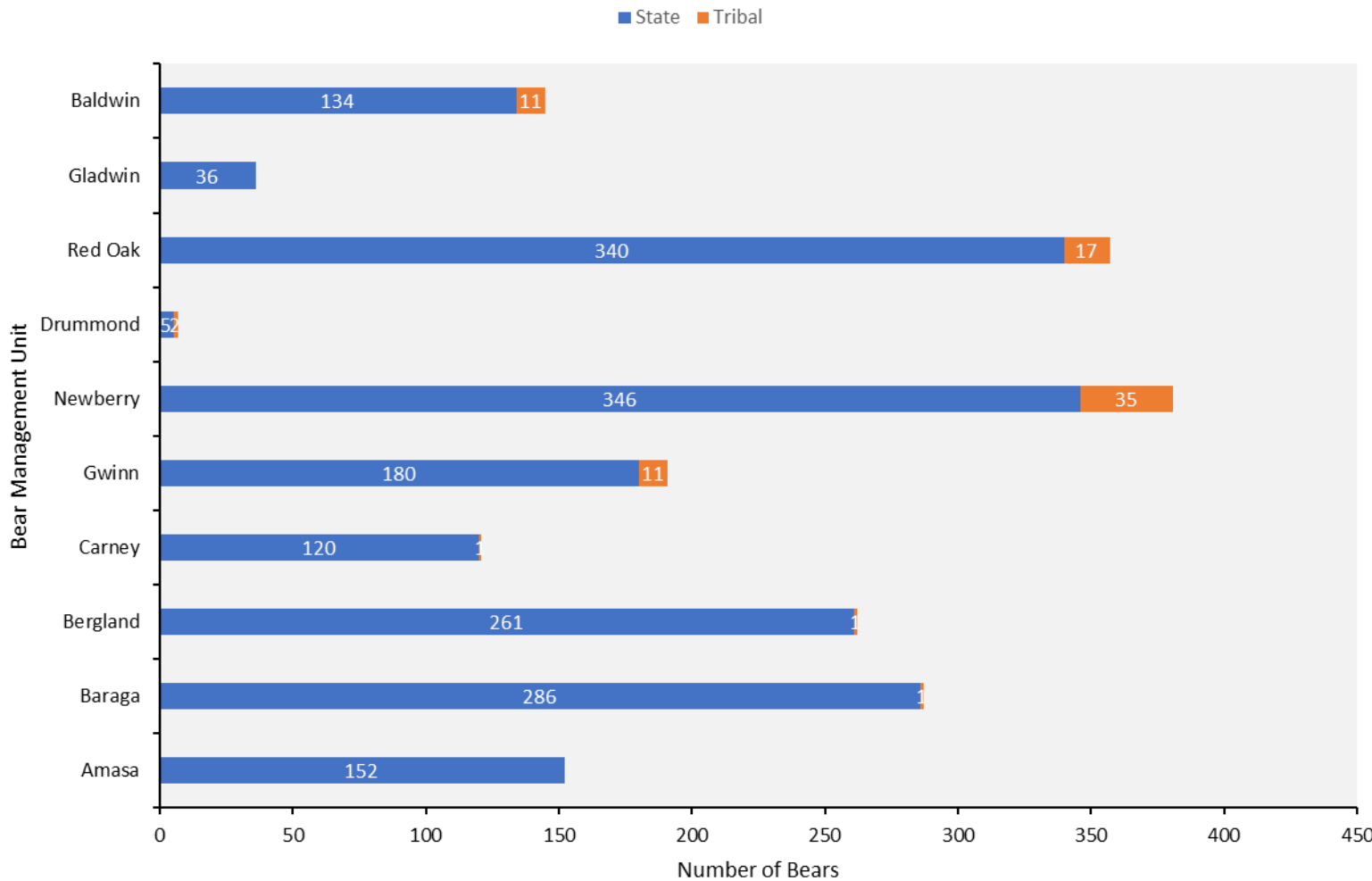


2021 Statewide Harvest (State Licensed Hunters)

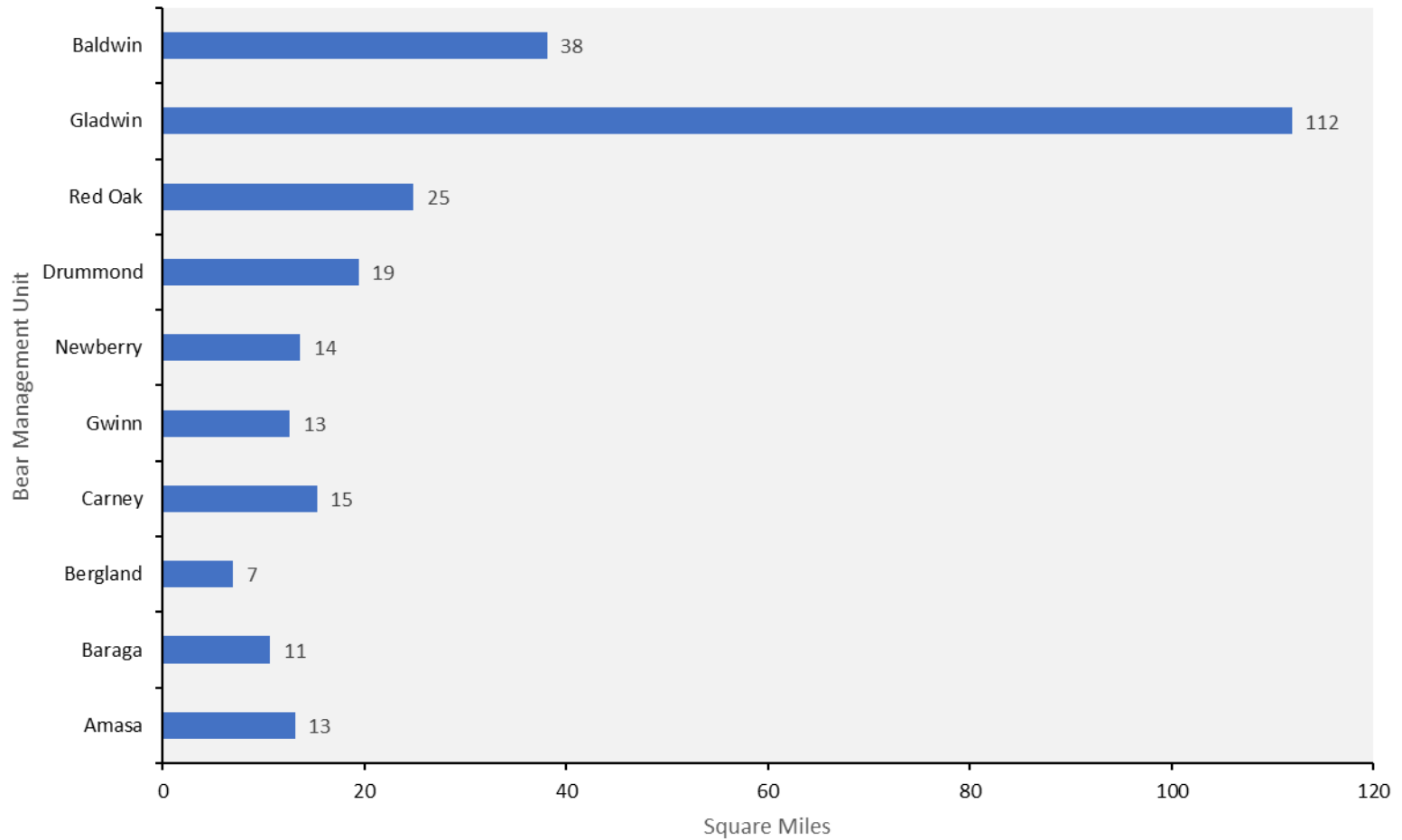
- 1,863 bears harvested statewide
- Up 4% from 2020 (1,800)
- 11% above the 10-year average
- Very good success rates in many UP and NLP BMU's



2021 Registered Harvest



2021 Square miles / harvested bear State and Tribal



2020 Bear Hunter Survey

- Most hunters (86%) relied primarily on bait only
- 12% relied primarily on dogs alone or a combination of baiting (strike) and dogs
- 79% of harvested bear were taken over bait
- Bait-only hunters had a 33% success rate, dog hunters had a 59% success rate



2020 Bear Hunter Survey

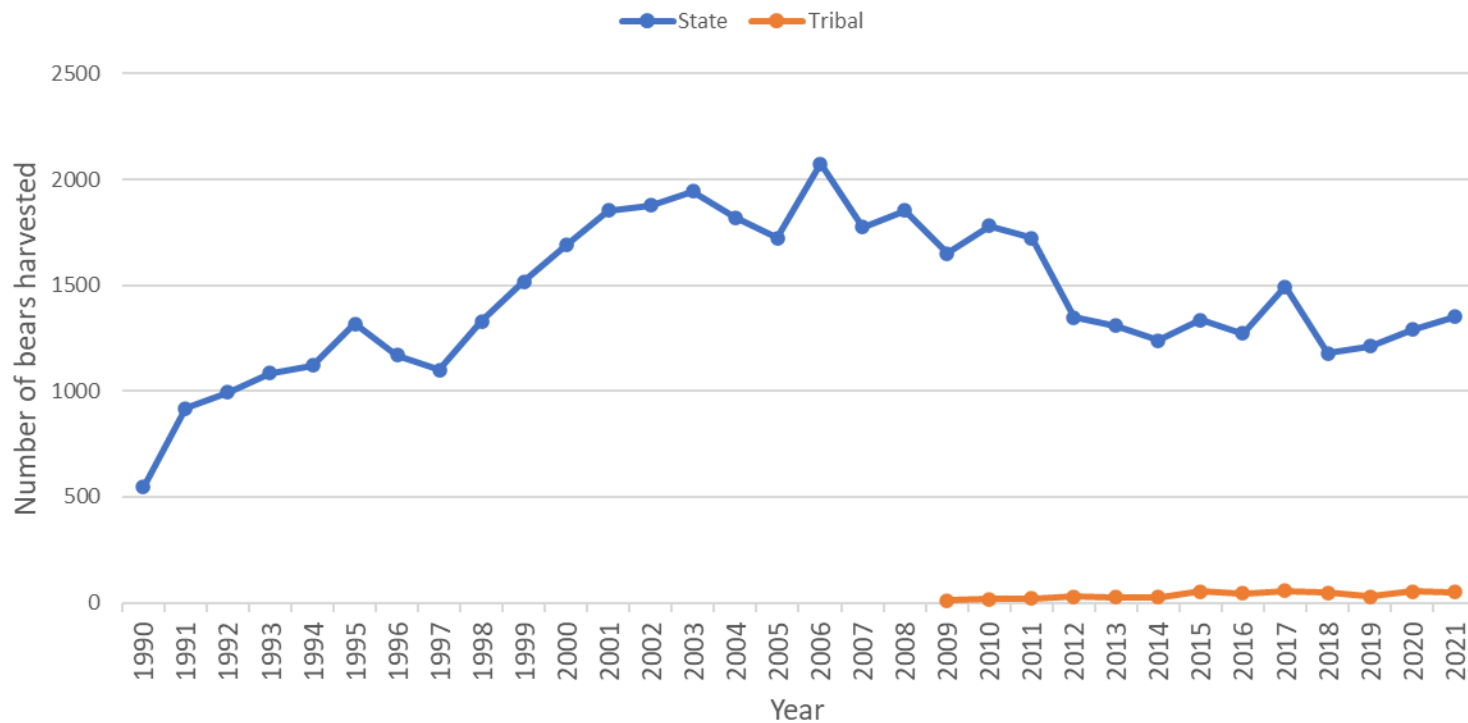
- The success rate of hunters that used a guide was 51%
- Approximately 725 hunters (14%) hired a guide
- 5,824 people bought a bear license, which is a decrease of 35% since 2010 (8,976)





UP Bear Harvest

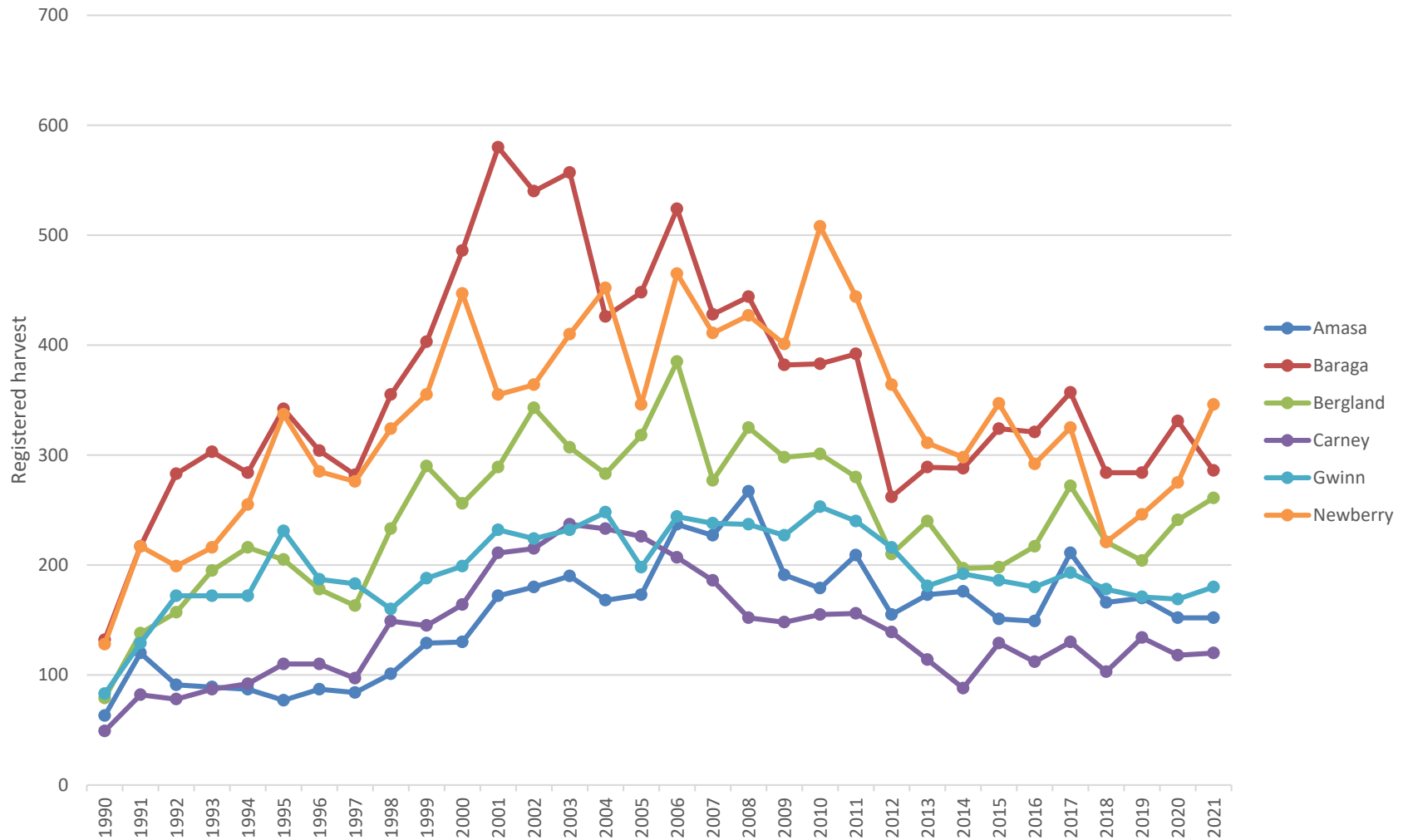
State long-term average: 1,434



1,350



UP: Number of bears registered by BMU (State-licensed hunters)

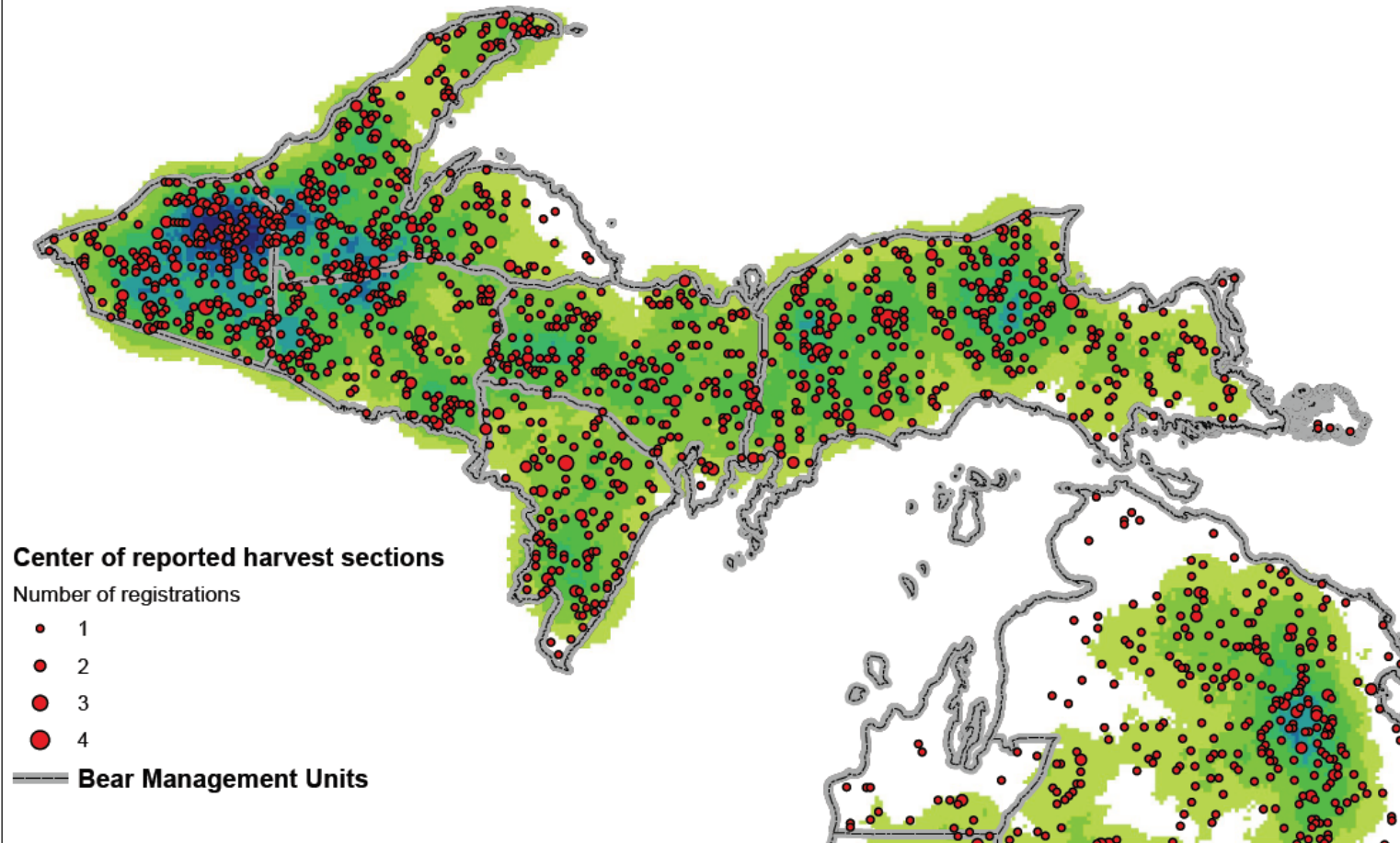
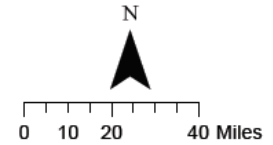


2021 Bear Harvest Locations - UP

SLM 12/13/21

2021 Upper Peninsula Bear Harvest Locations

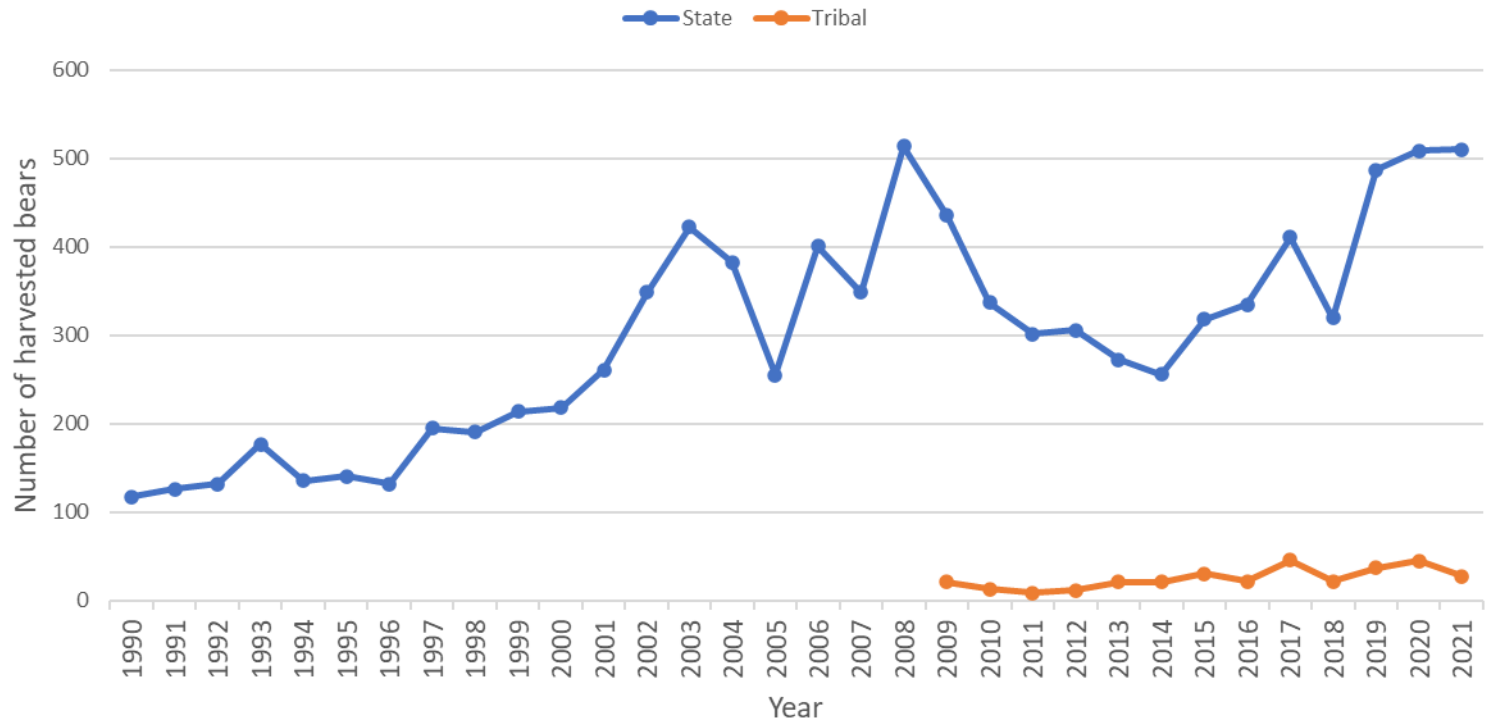
Note: This map shows only registered bears taken by hunting through state-issued licenses. 75 registered bears (statewide) had missing or incomplete location information and are not displayed.





NLP Bear Harvest

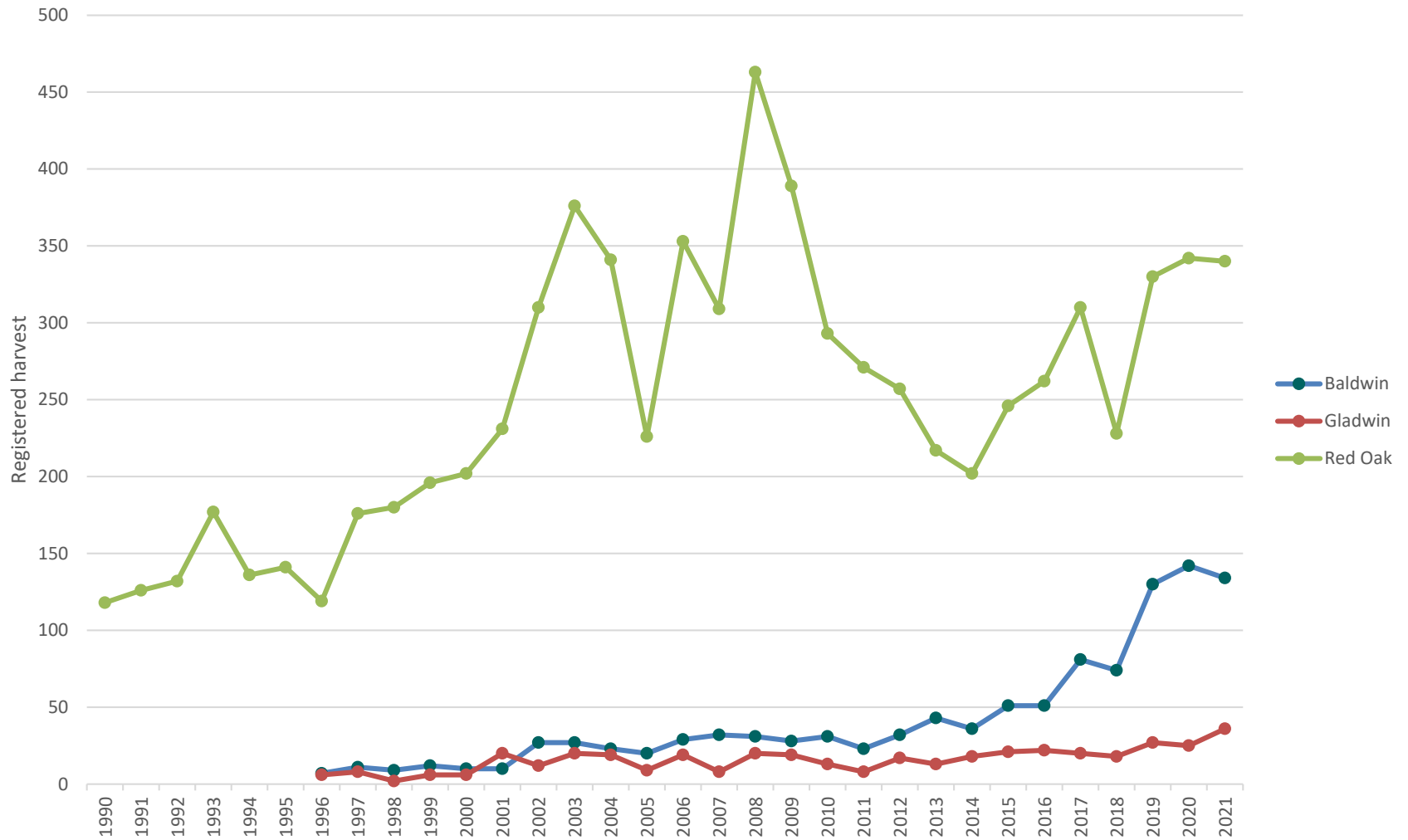
State long-term average: 297



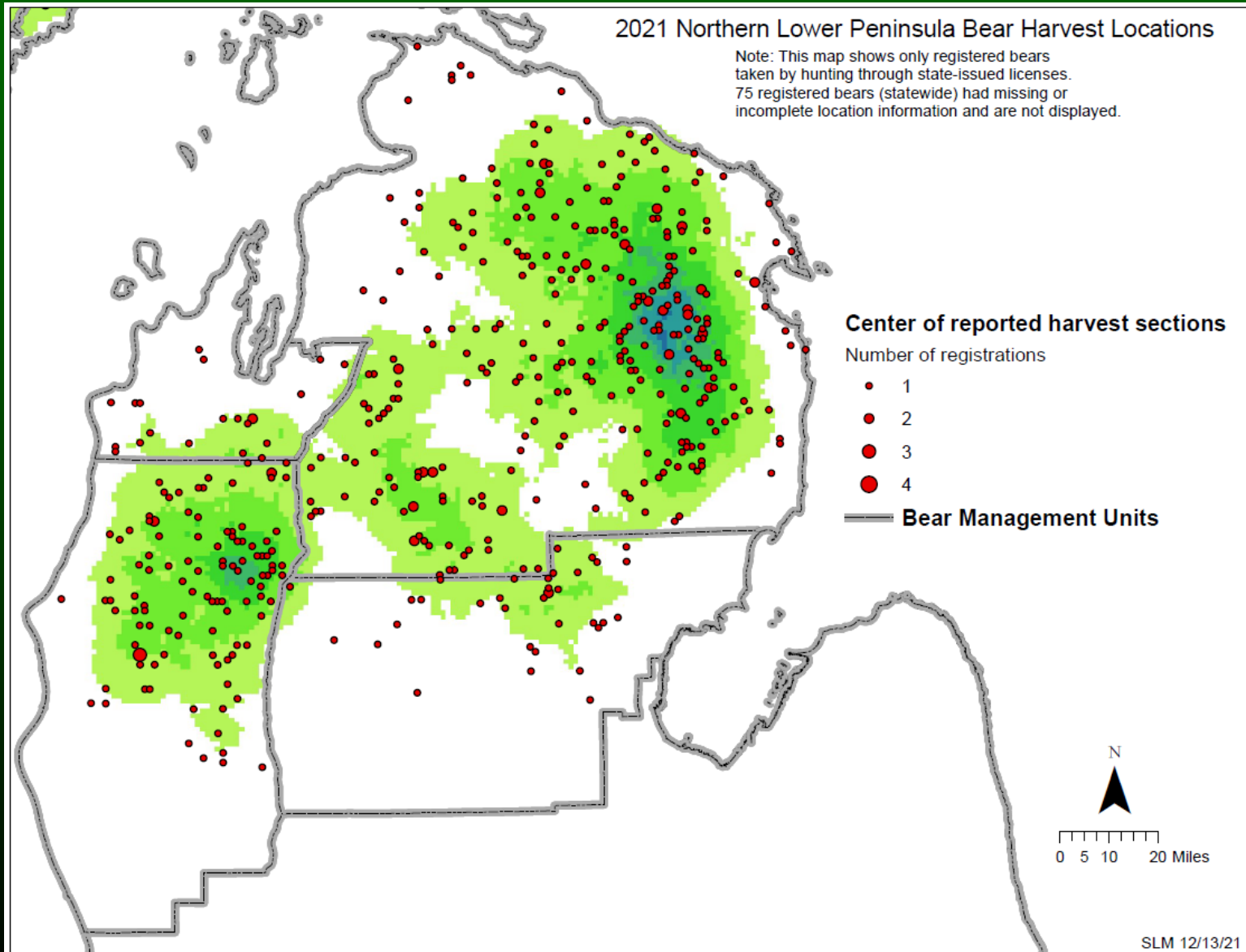
510



NLP: Number of bears registered by BMU (State-licensed hunters)

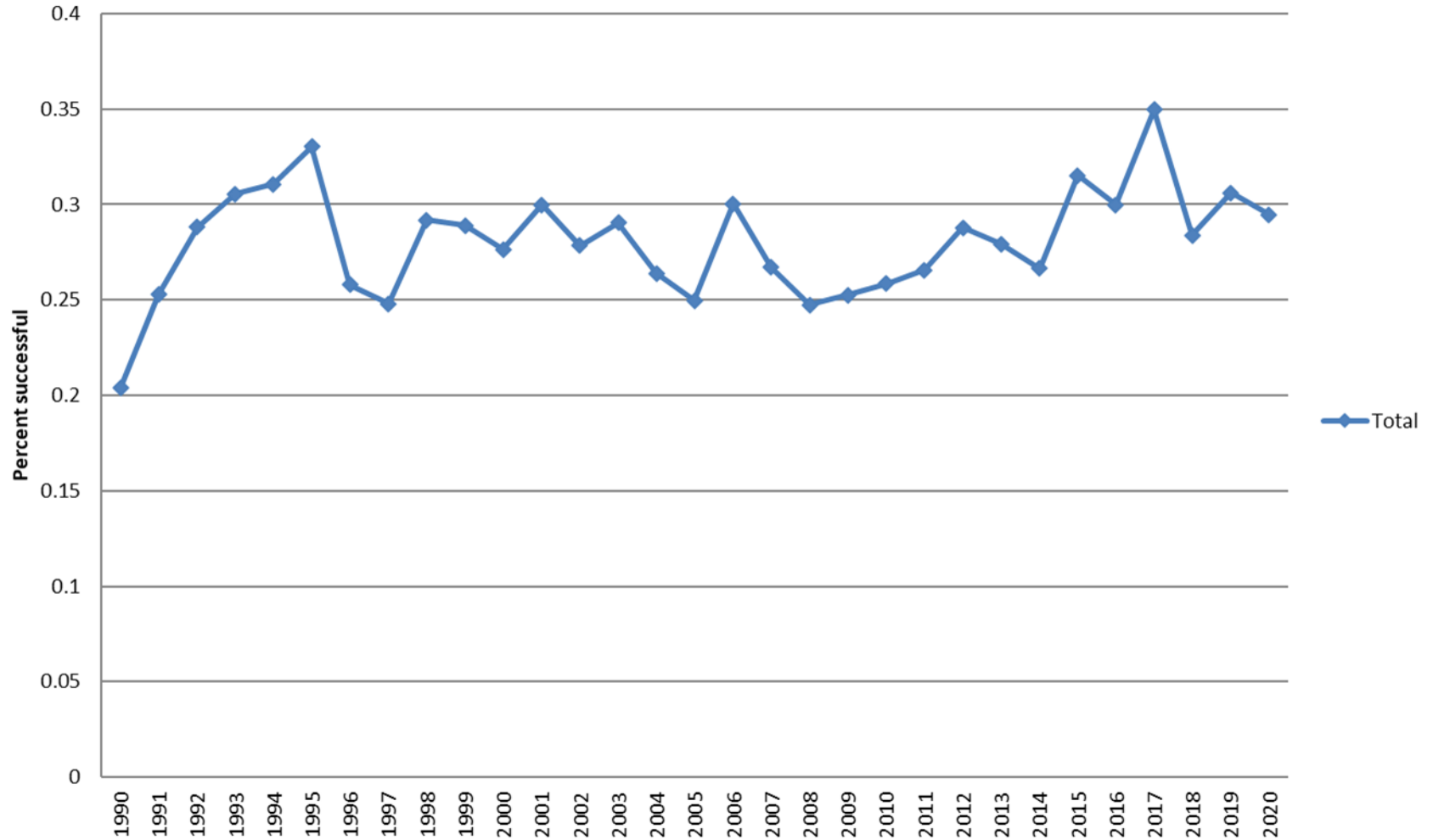


2021 Bear Harvest Locations - NLP



UP Region

Estimated percentage of successful hunters by year

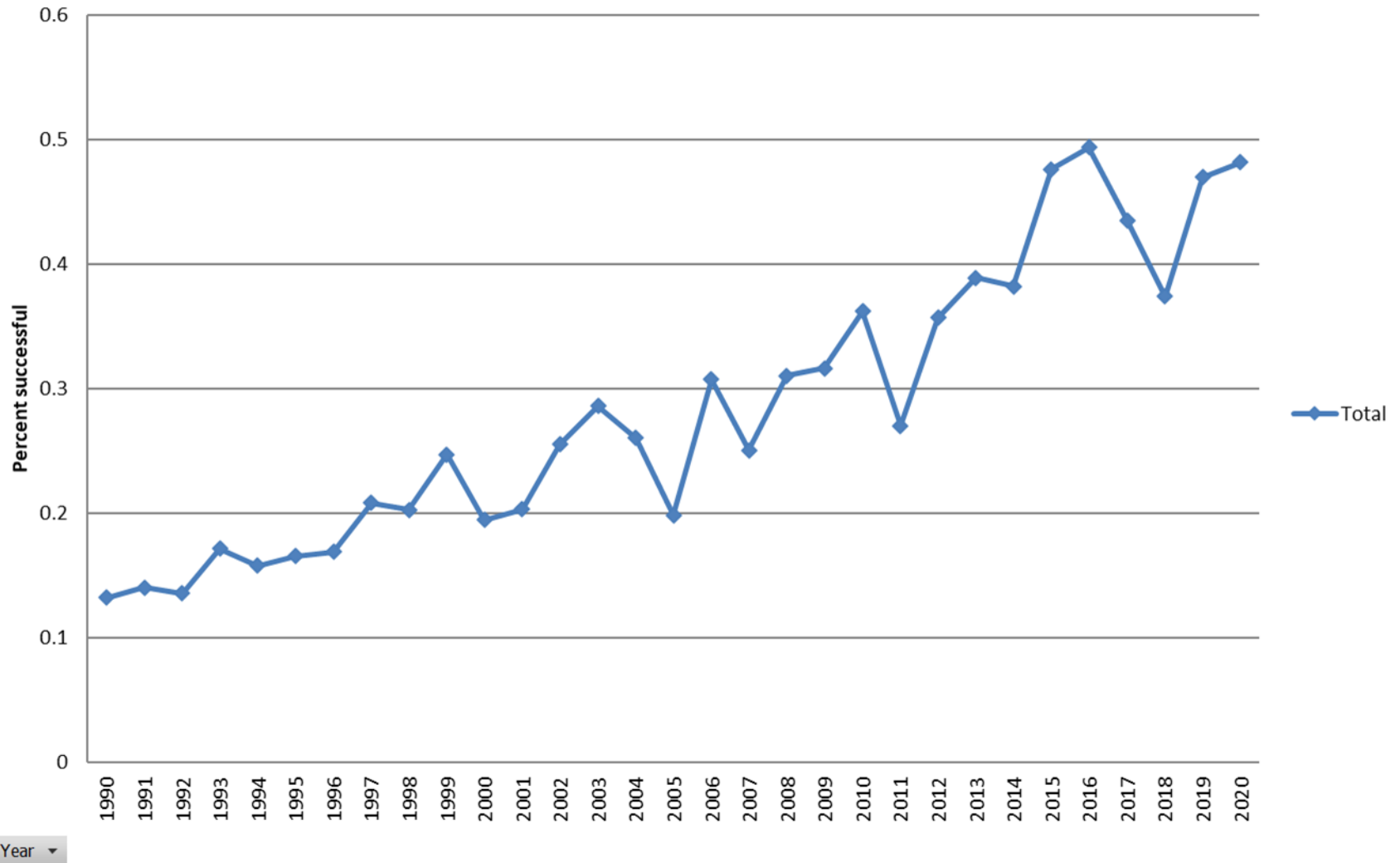


Year ▾



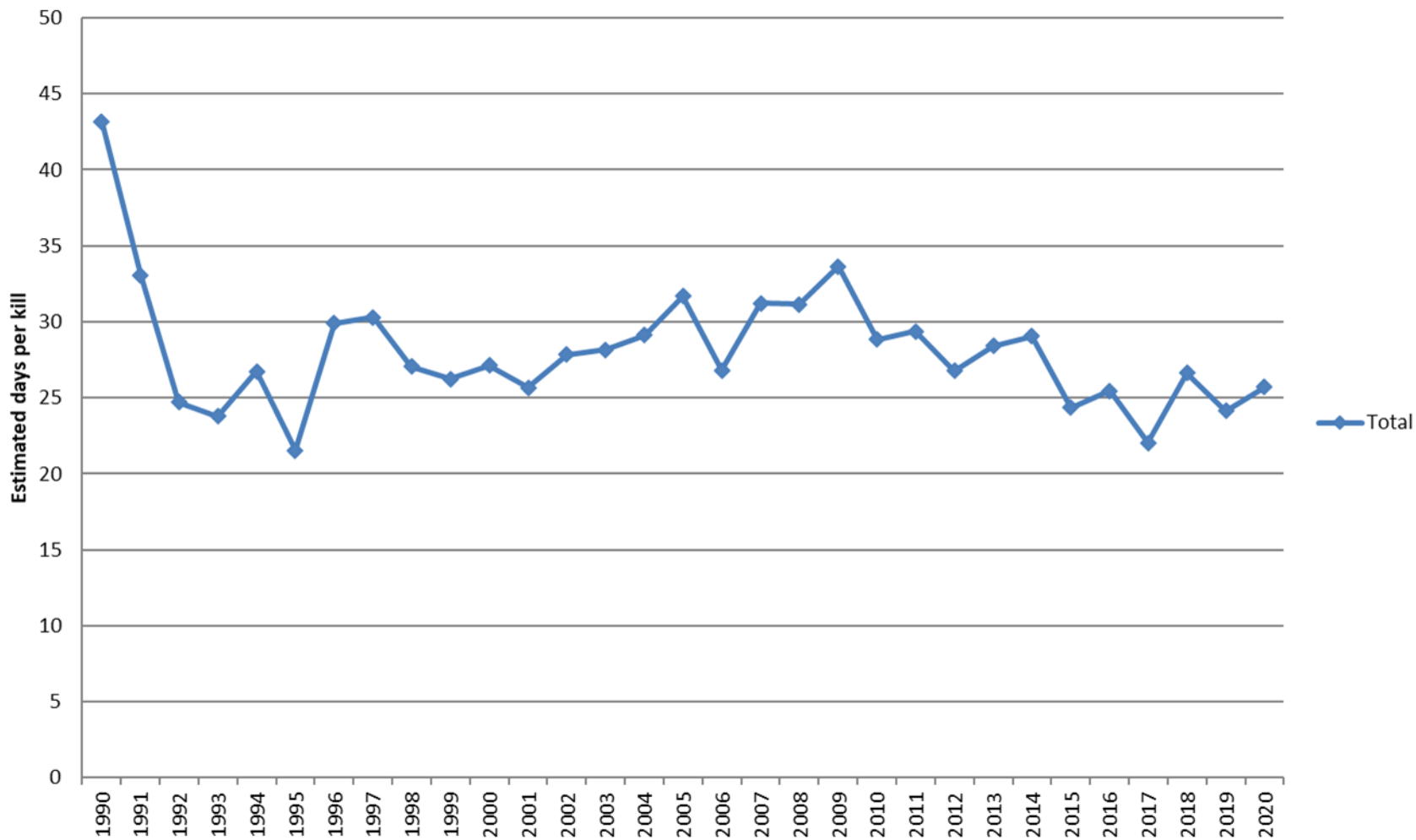
NLP Region

Estimated percentage of successful hunters by year



UP Region

Estimated effort per bear

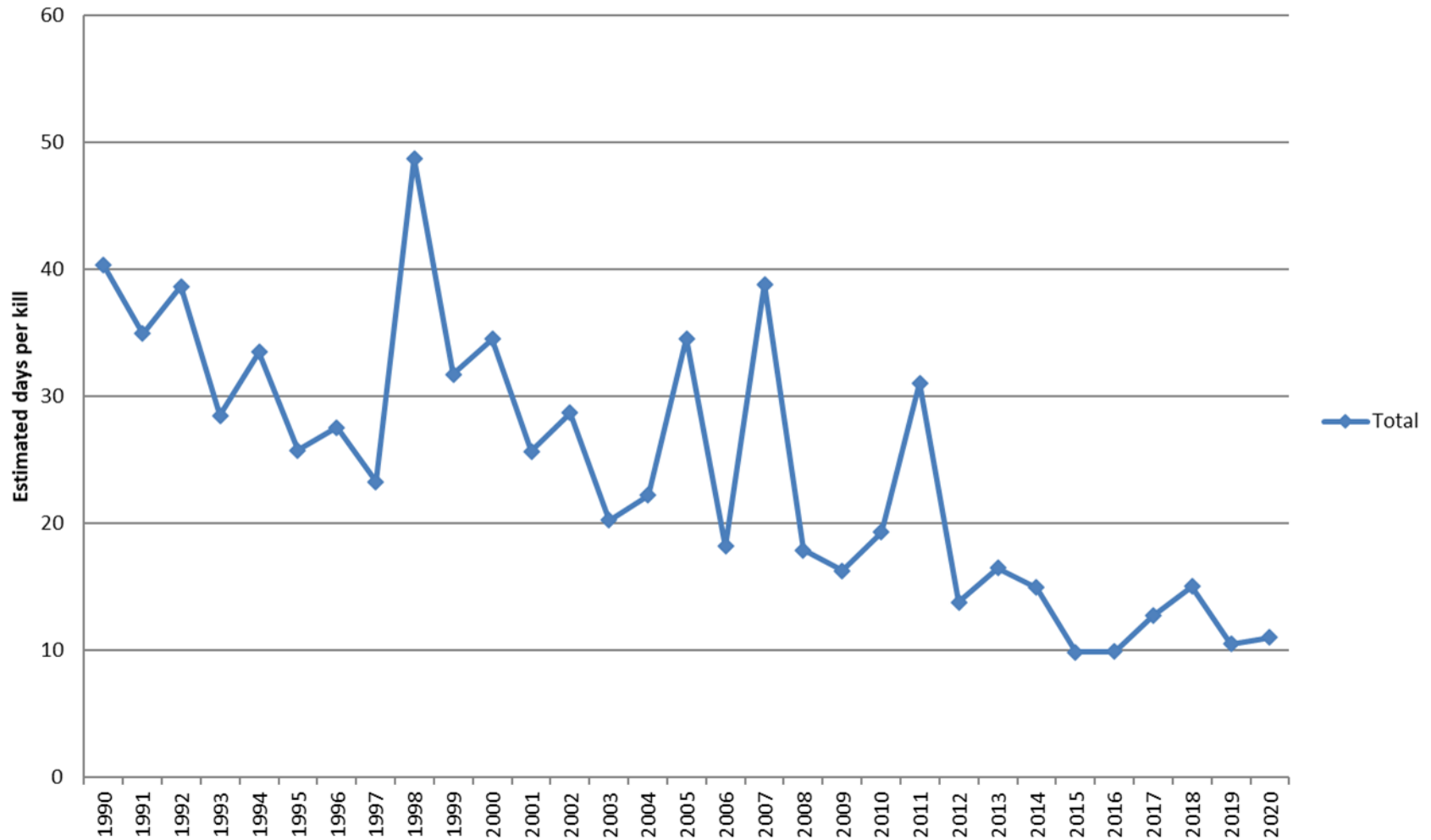


Year ▾



NLP Region

Estimated effort per bear



Year ▾

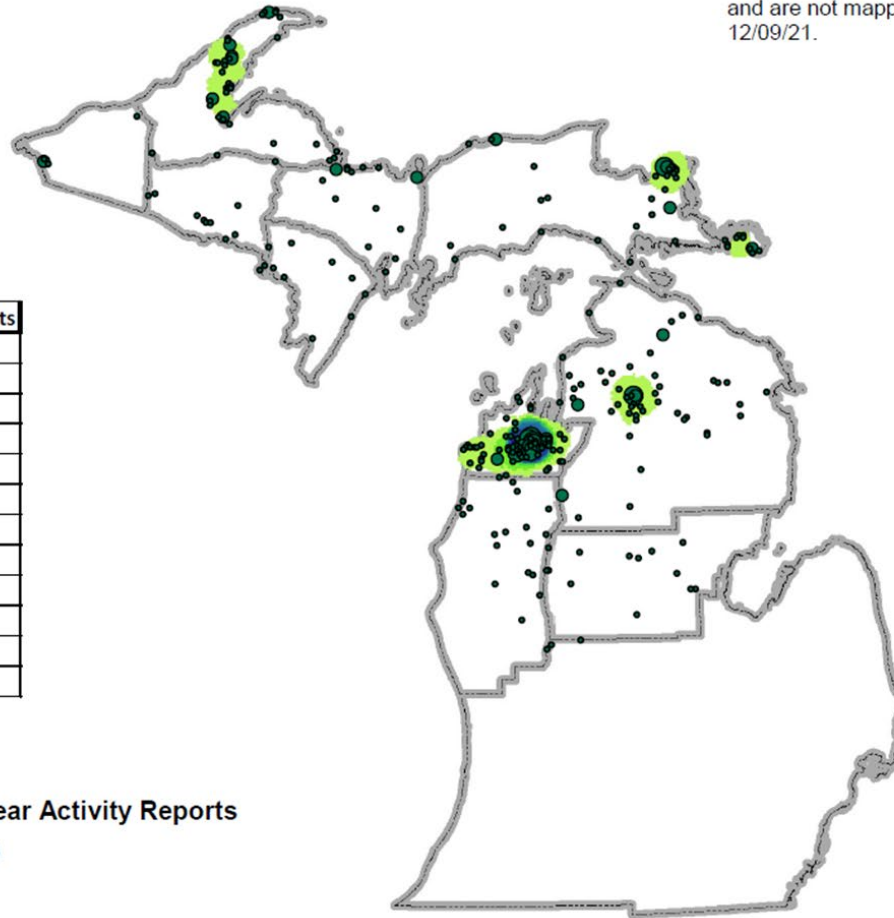


Nuisance Issues

2021 Bear Activity Reports

Note: 10 activity reports had missing or incomplete location information and are not mapped. Current as of 12/09/21.

Month	# of Reports
January	0
February	0
March	10
April	39
May	70
June	77
July	51
August	45
September	48
October	15
November	2
December	1

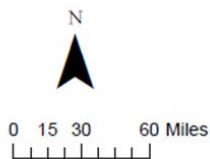


2021 Bear Activity Reports

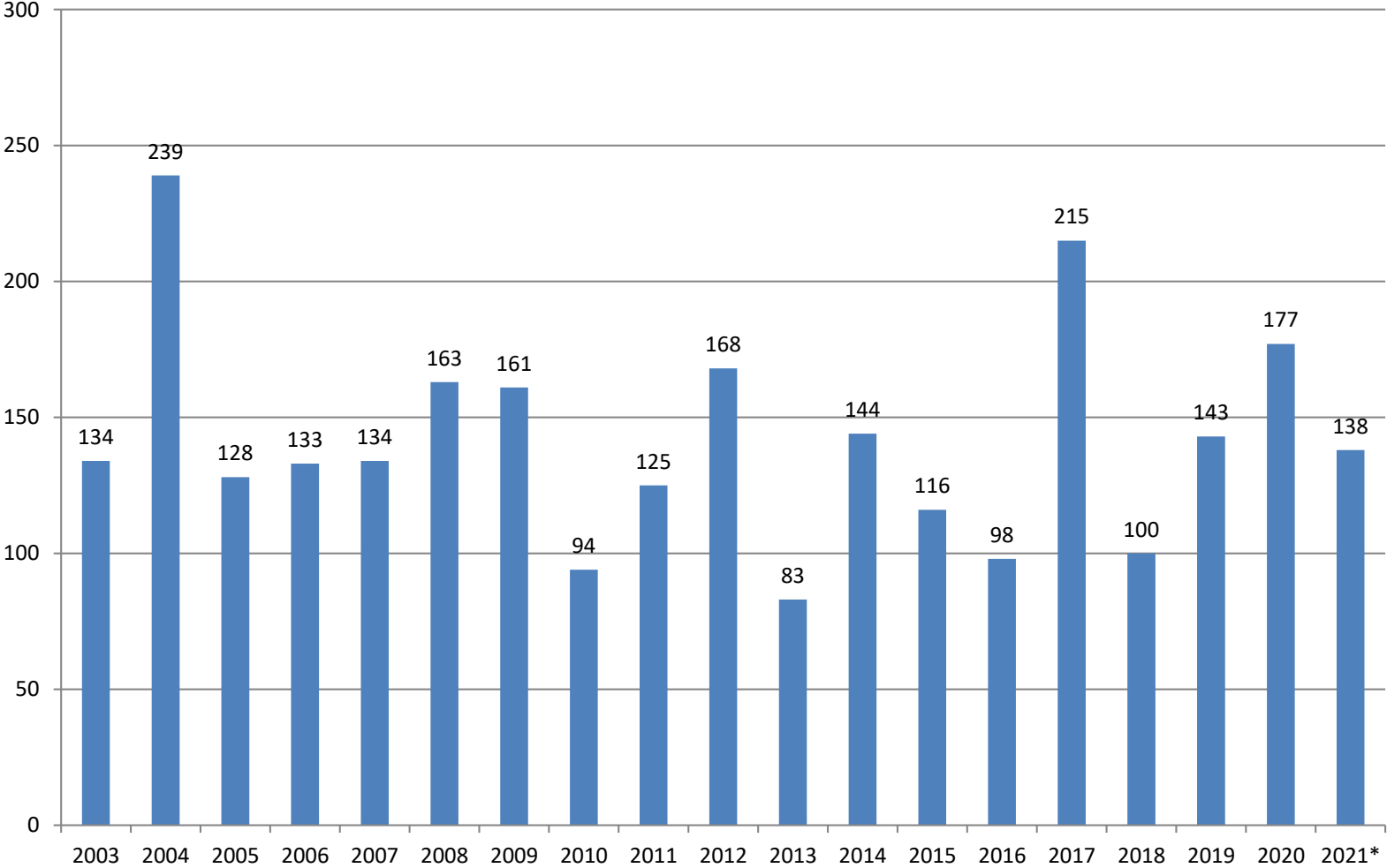
Reports

- 1
- 2
- 3+

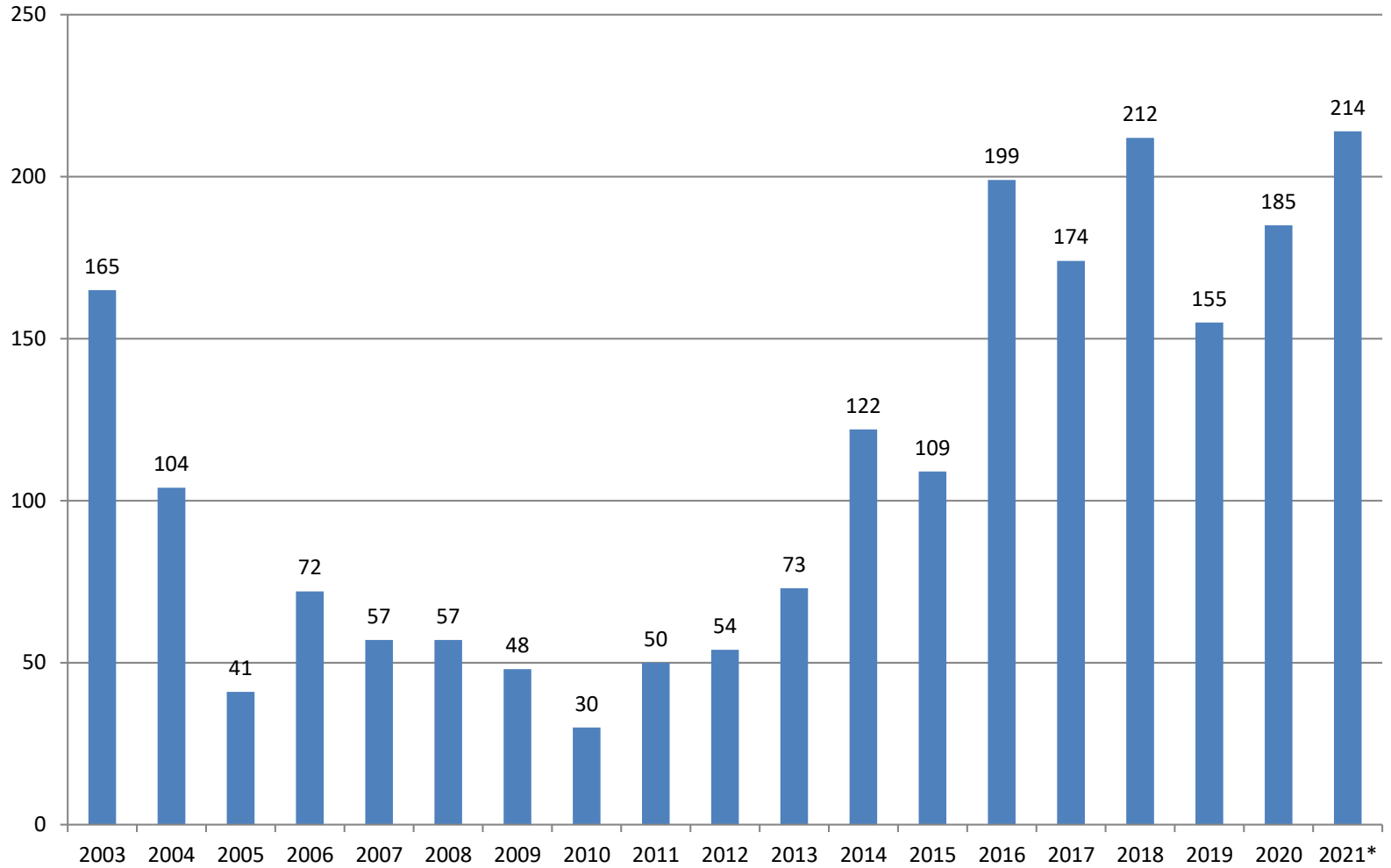
— Bear Management Unit Boundaries



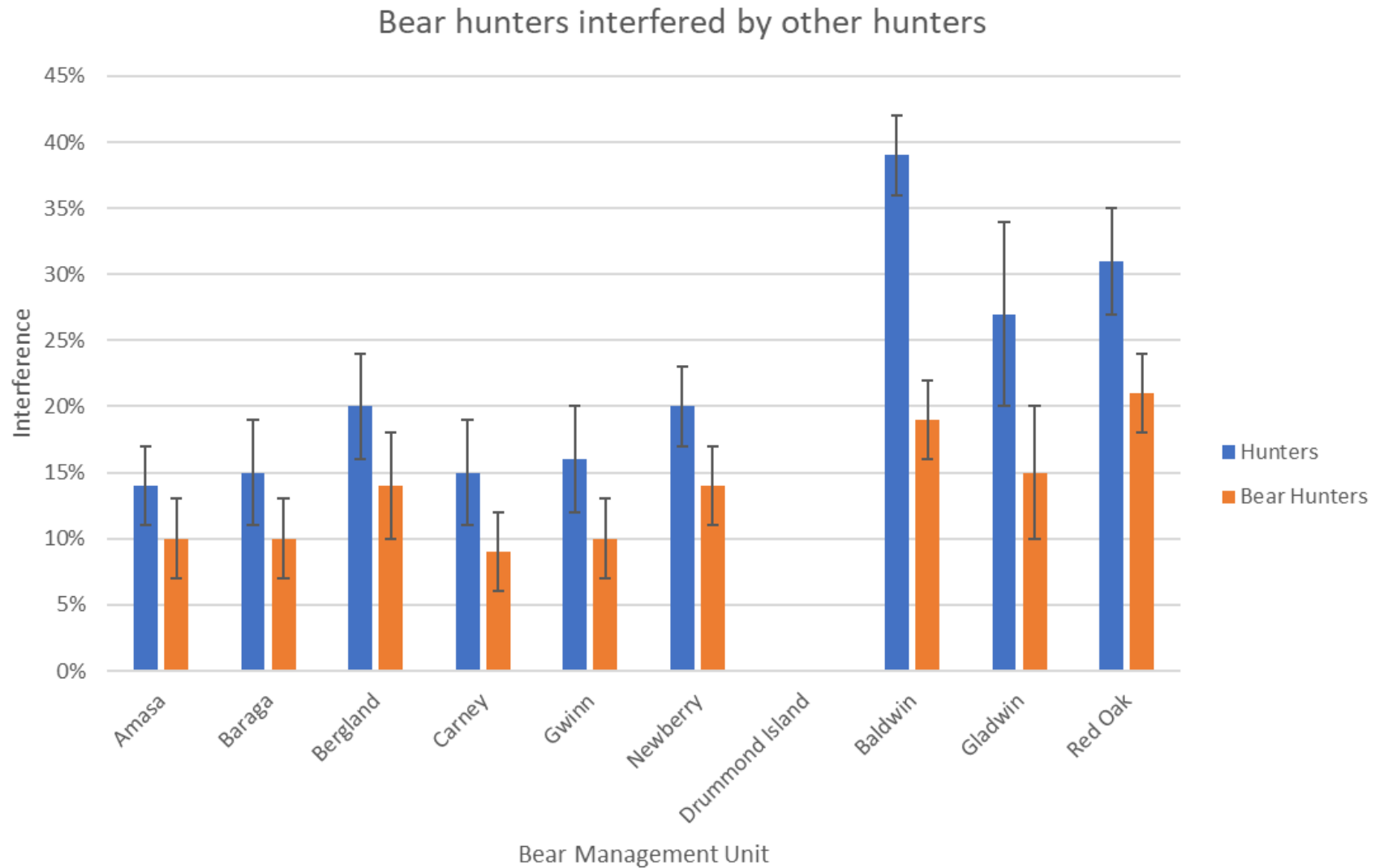
UP Region Nuisance Complaints



NLP Region Nuisance Complaints



Hunter Conflict



New question for 2021

6. Did other hunters interfere with your bear hunting?

¹ Yes

² No (*Skip to question 19.*)

7. If you answered “yes” to the previous question, was the interference caused by other bear hunters?

¹ Yes

² No

³ Not sure

8. If you answered “yes” to the previous question, what were these bear hunters doing that caused the interference? (*Please select all that apply.*)

¹ Pursuing bears with dogs.

² Hunting bears over bait.

³ Not sure.

⁴ Other (*Please describe* _____)



Bear Management Goals

1. Maintain a sustainable population within biological carrying capacity
2. Facilitate bear-related benefits
3. Minimize bear-related conflicts
4. Conduct science-based and socially acceptable management



Thank You

