

2023

Michigan Fishing Guide

Rules apply from April 1, 2023 – March 31, 2024

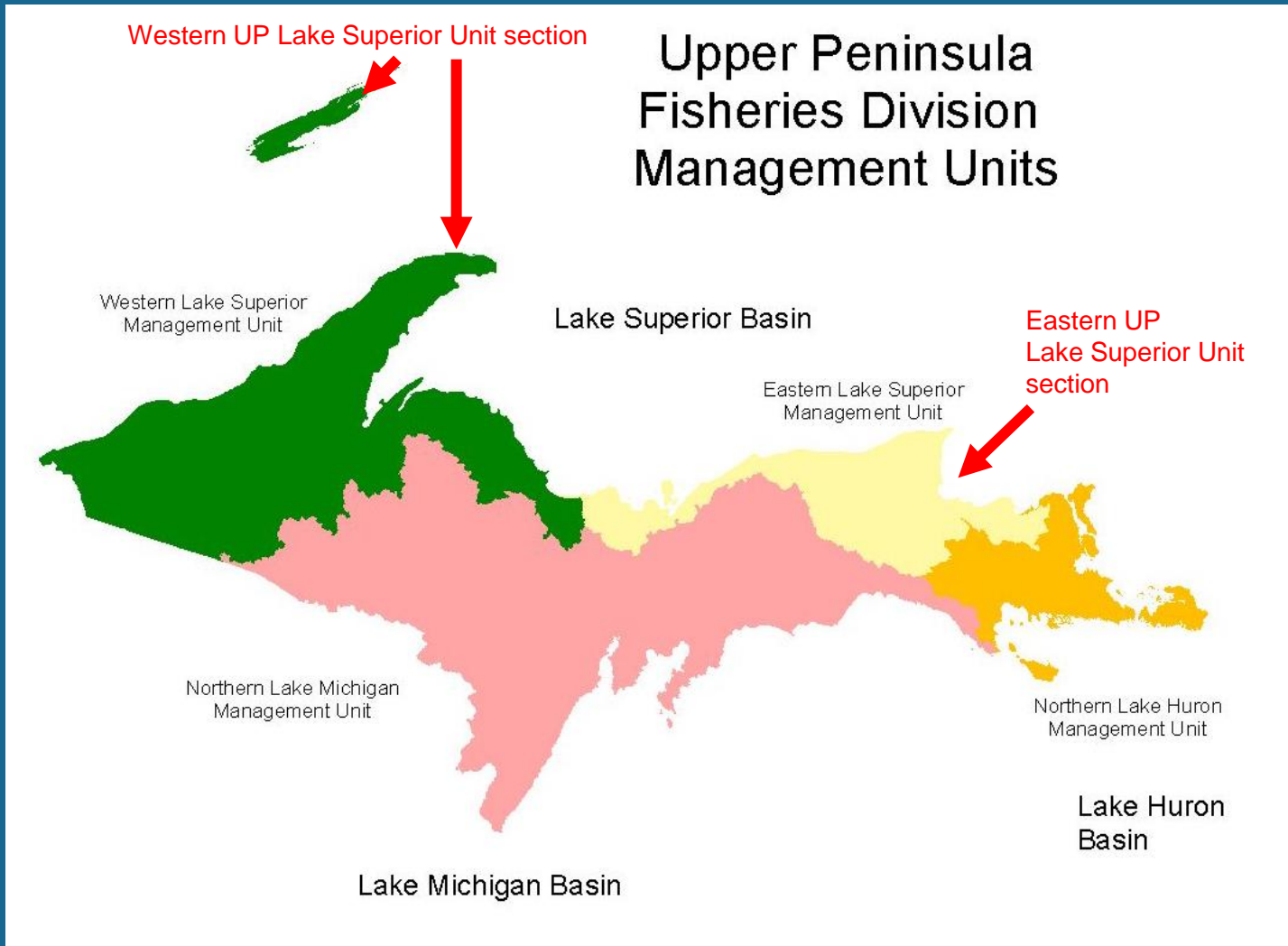


Get the digital guide at Michigan.gov/DNRDigests

Conversation and Coffee with Michigan DNR Fisheries Division Lake Superior Management Unit.

Patrick Hanchin, Lake Superior Basin coordinator/Unit Manager
Cory Kovacs, Eastern UP Fisheries Management Biologist
George Madison, Western UP Fisheries Management Biologist

Lake Superior Management Units



Evening Topics

This C&C presentation is intended to allow for sufficient question-answer discussion time.





Lake Superior Fisheries Management Plan For Michigan waters of Lake Superior



This plan will identify management goals and objectives for Lake Superior fish species.

- This plan will provide common understanding of management goals across all stakeholder groups, sportfishing anglers, and co-managing States and Provinces.
- This plan will share group communication of new gamefish species of emergence such as Brown Trout, Lake Sturgeon, Spotted Muskellunge, Walleye, Northern Pike, Freshwater Burbot.
- This plan will help guide research efforts using fin clips, DNA sampling, stable isotope regimes, acoustic telemetry, and timeframes for these research techniques.
- This plan will allow all groups to assess how management of fish species in Lake Superior compares to fish management in the lower Great Lake basins.

Splake Clipping Project

- Lake Superior
 - Stock 65,000
 - All splake receive clip
 - Unique clip for each location
- Evaluate
 - Return to creel
 - Movement
 - Validation of ages
- Clipping through 2025
- Evaluation through 2030



Chocolay River-Steelhead Stocking

- MDNR fisheries surveys report a decline in juvenile steelhead
- Angler reports have been negative
- Last stocked in 1986 (fall fingerlings in 2001)
- Prescription for 12,000 yearling steelhead, annually starting 2023





Lake Gogebic Walleye Population Estimates



Year	Number
1976	56084
1977	38540
1984	63000
1985	66844
1994	62497
1998	28840
2005	103916
2017	45453
2022	40802

- Adult walleye density in Gogebic ranges from 3-8 per acre.



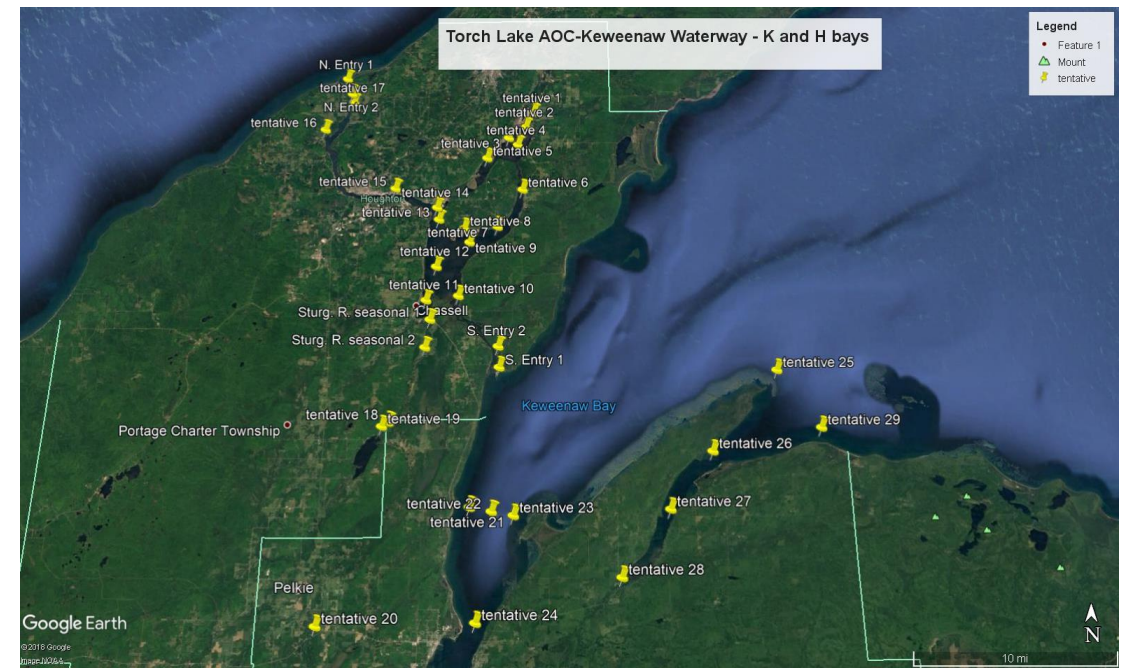
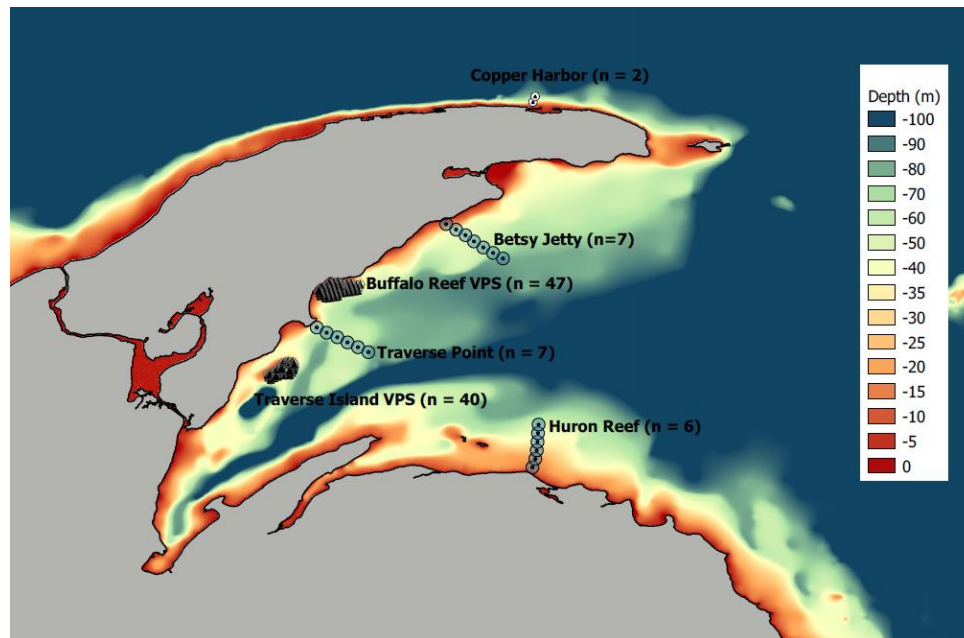
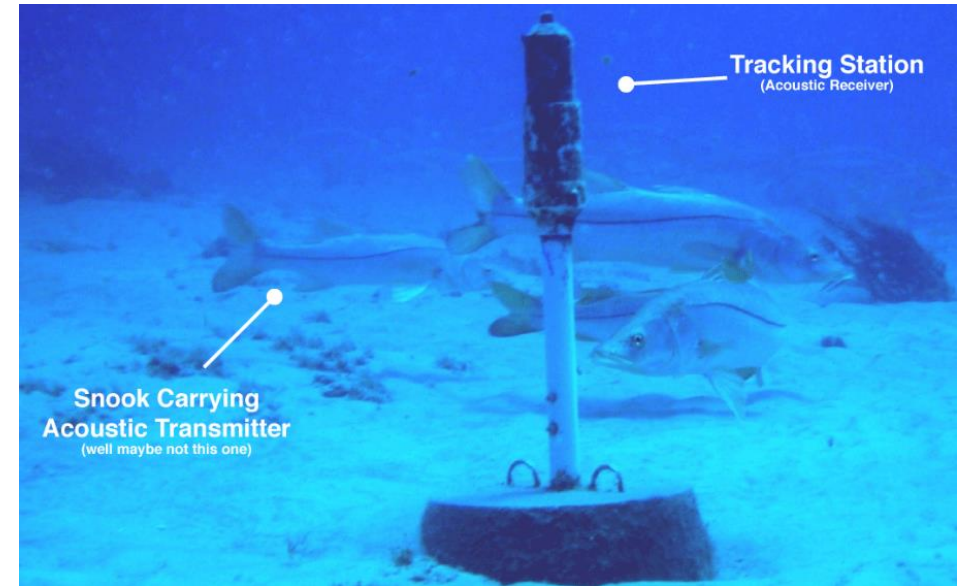
Lake Gogebic Walleye Fishery

The current discussion for Gogebic is whether we should proactively restrict walleye harvest to build resiliency against climate change or invasive species. There are a few data points showing that centrarchid species might be increasing, ice-out appears to be more variable, and water clarity is increasing. One regulation being consider is WDNR's Treaty regulation (15-20 harvest slot with 1 over 24).





Acoustic telemetry work, Portage/Torch and Lake Superior.





Management of Stamp sands along the Lake Superior shoreline from the Village of Gay to the Big Traverse River.





- Proposal for 2024 to combine the splake and lake trout possession limits for all of the Great Lakes.
- This will simplify the understanding of the regulations for these two trout gamefish.

The regulations in this table apply to fishing on the Great Lakes for the following species: Atlantic salmon, brook trout (NOTE 1), brown trout, Chinook salmon, coho salmon, lake trout (NOTE 3), pink salmon, rainbow trout (steelhead) and splake (NOTE 3). For regulations that pertain to fishing for trout and salmon on inland waters, see pp. 42-65

Great Lakes Trout & Salmon Regulations

Seasons by Water Type	Minimum Size	Daily Possession Limit (NOTES 1, 2, 3)
Open All Year: (NOTE 3) L. Superior, L. Michigan, L. Erie, L. Huron, L. St. Clair, St. Marys R., St. Clair R. and Detroit R.	10" (NOTES 1, 3, and p. 21)	Great Lakes, L. St. Clair, St. Marys R., St. Clair R., and Detroit R.: 5 total in any combination; no more than 3 of any one species, except up to 5 coho, Chinook or pink salmon allowed.
		On the St. Marys R.: 5 additional pink salmon allowed from last Sat. in April - Sep. 30.

NOTE 1

Brook Trout: For L. Superior, the minimum size limit for brook trout is 20" and possession limit is 1 fish. Within 4.5 miles of Isle Royale (Isle Royale National Park waters), catch-and-immediate-release; no possession.

NOTE 2

Drowned River Mouth Lakes: On the following inland waters trout and salmon regulations are as follows: 5 total trout and salmon in any combination; no more than 3 of any one species, except up to 5 coho or Chinook salmon; minimum size limit is 10"; fishing season and possession season are open all year. For all other species of trout and salmon, the possession season is open all year. **Allegan:** Kalamazoo and Silver Lks. **Benzie:** Betsie L. **Charlevoix:** L. Charlevoix (including Round L.) **Manistee:** Arcadia, Manistee, and Portage Lks. **Mason:** Pere Marquette L. **Muskegon:** Duck, Mona, Muskegon, and White Lks. **Oceana:** Pentwater, Silver, and Stony Lks. **Ottawa:** Macatawa and Pigeon Lks.

NOTE 3

Lake Trout and Splake Regulations: Lake trout and splake regulations for the Great Lakes are listed by Lake Trout Management Unit (see Table 4, p. 21). To help identify Management Unit boundaries, a few major ports are listed for each. The map on p. 20 provides a graphic to further define the boundaries. For a complete description of Lake Trout Management Unit boundaries, contact any DNR Customer Service Center (see p. 73) or check online at Michigan.gov/DNR.

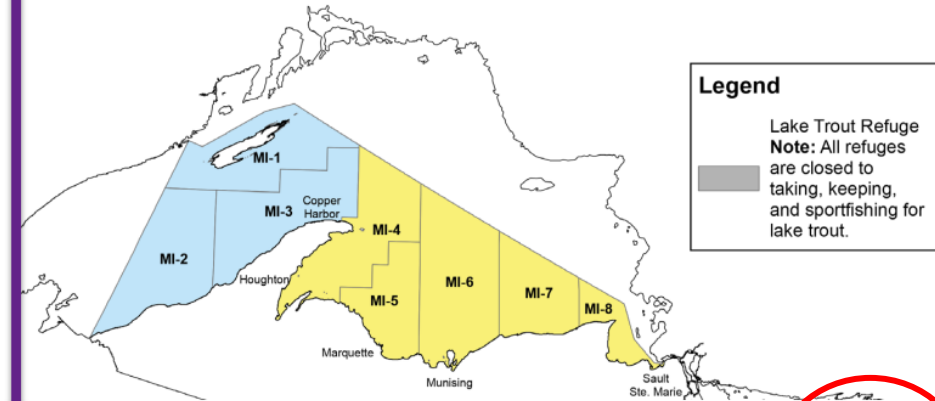
Michigan's Creel Survey Program

A "creel" is a basket used to collect fish. The Michigan creel survey program is used to collect fish data! When returning from your fishing trip, you may find a creel clerk waiting to interview you and take samples from your fish. Creel clerks collect information about the length of your fishing trip and what fish you caught and released. Biologists use this data to study fish populations, evaluate stocking, and measure the impact of fishing regulations. Creel clerks also want to listen to your concerns and answer questions.

The next time you see a friendly face in a DNR shirt approaching you with a clipboard, introduce yourself! We appreciate your participation in the survey and thank you for your time.



Lake Trout Management Units & Refuges



Lake Trout Management Unit, Major Ports	Possession Season	Size Restrictions (inches)	Maximum Lake Trout Possession Limit
LAKE SUPERIOR: map color coded by unit regulations			
MI 1-3: Windigo, Ontonagon, Copper Harbor	Open All Year	The minimum size limit for lake trout and splake shall be 15"; the daily possession limit shall not include more than 1 lake trout 34" or greater.	3
MI 4-8: Big Bay, Marquette, Au Train, Munising, Grand Marais, Pendills Bay, Brimley State Park			5



Combined Lake Trout and Splake Daily Possession Limits



Splake and lake trout daily possession limits are confusing to some anglers.

Size limits have been aligned for splake and lake trout due to law enforcement issues, so it makes sense to align daily possession limits as well.

A regulation change is underway to combine the daily possession limit for lake trout and splake across Lake Superior to match the current daily possession limit for lake trout.

This regulation change will allow more opportunity to harvest splake in the Lake Superior waters east of the Keweenaw where anglers can currently only harvest 3 splake and would potentially be able to harvest 5 splake.



Ontonagon River Regulation Proposal For Catch and Immediate Release Lake Sturgeon

- The regulation would be for the Ontonagon River, from the mouth at Lake Superior, upstream to the Victoria Dam Road.
- This proposal will allow for targeted catch-and-immediate-release fishing for Lake Sturgeon in the Ontonagon River from July 16 to March 15 (identical to other Michigan waters that have a catch and release season for Lake Sturgeon).
- No bait or tackle restrictions are proposed.



Let's go fishing

2023

Michigan Fishing Guide

Rules apply from April 1, 2023 - March 31, 2024



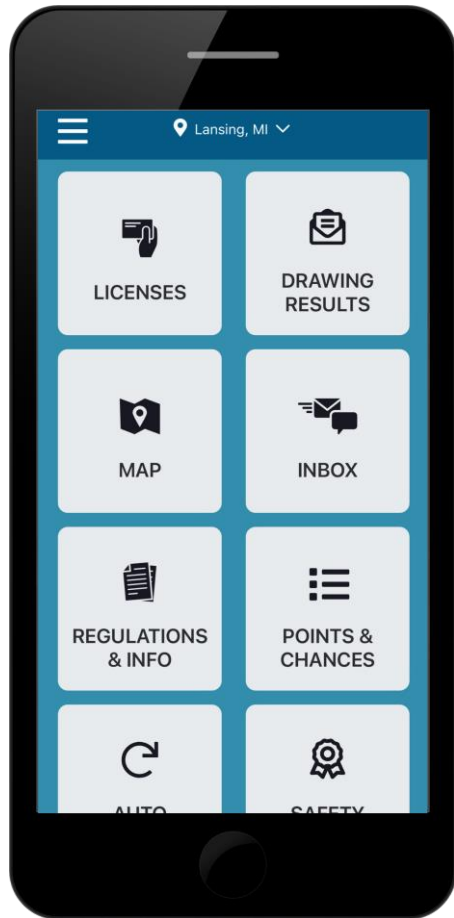
Get the digital guide at Michigan.gov/DNRRDigests



Get the digital guide at Michigan.gov/DNRRDigests

The new license season begins April 1, and the 2023 fishing licenses are valid through March 31, 2024. Licenses can be purchased at Michigan.gov/DNRLicenses. By purchasing a fishing license online, anglers will have the opportunity to sign up for auto-renewal through the **DNR eLicense system**.

Michigan DNR Hunt Fish App



- Official app of the Michigan Department of Natural Resources
- Features:
 - Buy licenses, applications and permits
 - Report a harvest
 - Access hunting and fishing rules and regulations

QUESTIONS?

