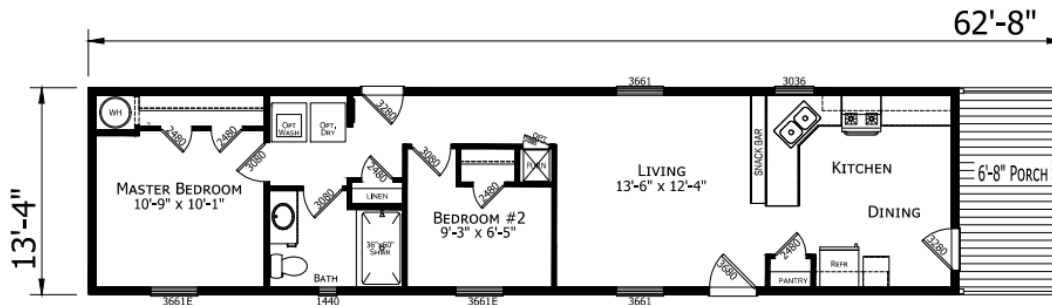


One Only!

Essentials Series by Atlantic
ESSF45626-- 2 BDRM/1 BATH
14'x56' (60') 746 SQ. FT. (62'8" with porch)

2023 MODEL YEAR HOME AT SALES CENTER



Standard features

- Open floor plan
- Gas furnace with thermostat
- 30" deluxe gas range
- Sunburst fiberglass front door
- 2x6 sidewalls 16" OC
- 8' sidewalls
- Bank of drawers in kitchen
- Cottage rear door

Options included in home

- Electric furnace with 200 AMP service
- OSB with house wrap
- R22 floor & R30 roof insulation
- Vinyl flooring throughout
- LED can lights in kitchen and bedrooms
- Electric range
- 6'8" porch
- 9 lite cottage door in kitchen
- 60" shower IPO standard tub

HOME WITH INCLUDED OPTIONS: \$71,800

ITEMS FOR HUD CODE INSTALLATION & COMPLETION OF SITE WORK
These items are site specific and final costs will be dependent upon actual property

- Pier Footers
- Vapor Barrier
- Anchors/Tie Downs

- Vinyl Skirting
- Code Compliant Steps
- Electric, Water & Sewer Service

Grading