



EQUIPMENT  
Wellness Company

Presents

The new cosmetic line

*21mila*



FRIENDSHIP, SHARING OF IDEAS,  
EXPERIENCE, ASPIRATION AND A LOT  
OF WILL,

Ingredients needed for a recipe called:

*21mila*

# 21 *mila*

## MEANINGS

### Why 21?

- 21st Century, new beginning, luck, economic stability, success, trust, loyalty and courage.
  - 40 years of work in beauty field, inner cosmetic laboratories, highly qualified staff, very high quality of the product.
  - Continuous growth goals.

# FOAMING MOUSSE CLEANSER

CLEANSING – HYDRATING - PURIFYING

**MORINGA EXTRACT :**  
PURIFYING AND ANTI-  
POLLUTION EFFECTS. IT  
COUNTERACTS THE  
CONTACT WITH  
AGGRESSIVE EXTERNAL  
AGENTS.

**MICRO -EMULSION  
WASHING:**  
GENTLE WASHING  
AGENTS 100 %  
VEGETABLE ORIGIN.



# DAY CREAM

SHINING - CONTRASTING SKIN DISCOLOURATION - UNIFORMING

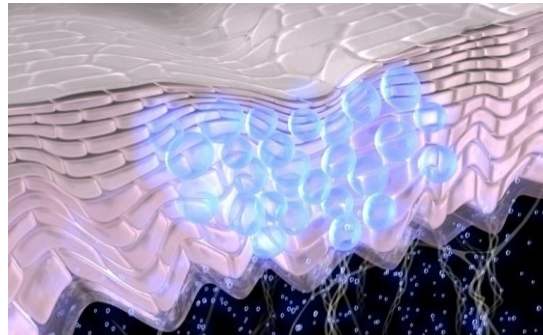
**LIGHT DETECTORS PIGMENTS:** PH SENSITIVE PIGMENT, IT PERSONALIZE THE PRODUCT TO THE SKIN TYPE.

**MAT EFFECT CREAM NOT OILY:** IS ABLE TO AUTOMATICALLY ADAPT ITSELF TO DIFFERENT SKIN TYPES. IT MITIGATES THE OILINESS AND HELPS THE REABSORPTION.

**MEDIUM PROTECTION SUN FILTERS**

**ULTRA FILLING SPHERES:** MICROSPHERES ABLE TO DEEPLY MOISTURIZE THE SKIN.

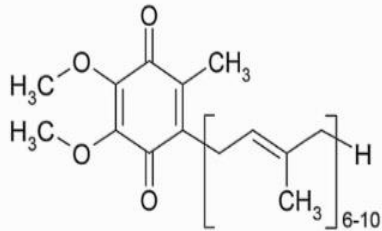
**EXTRACT OF EVODIA RUTAECARPA:** IS ABLE TO SHINE AND SMOOTH.



# NIGHT CREAM

FIGHTS AGAINST DEEP WRINKLES - HYDRATING - GIVES ENERGY TO THE CELLS

## COENZYME Q10



**Q 10: ANTIOXIDANT,  
ANTI - AGING.**

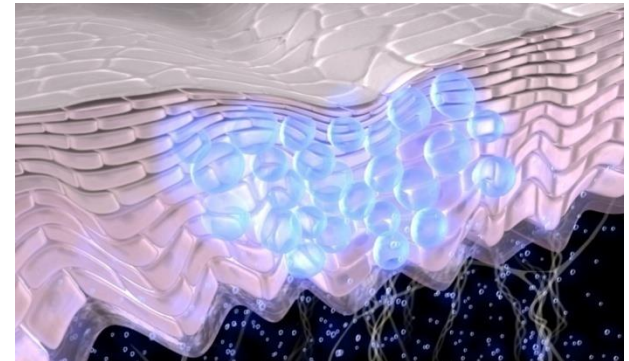


**ERYTHRITOL:**  
EXTREMELY  
MOISTURIZING SUGAR.

**EMULSIFYING MATTE EFFECT:** IS ABLE TO AUTOMATICALLY ADAPT ITSELF TO DIFFERENT SKIN TYPES. IT MITIGATES THE OILINESS AND HELPS THE REABSORPTION.



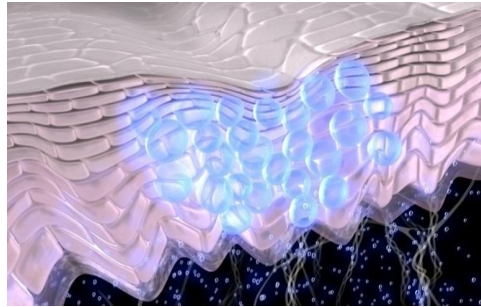
**ULTRA FILLING  
SPHERES:**  
MICROSPHERES  
ABLE TO DEEPLY  
MOISTURIZE  
THE SKIN.



# FILLER SERUM

FIGHTS AGAINST DEEP WRINKLES - HYDRATING - GIVES VOLUME AND TURGOR –SMOOTHS

**ULTRA FILLING SPHERES:**  
MICROSPHERES ABLE TO DEEPLY MOISTURIZE THE SKIN.



**ELASTIN EXTRACT:** INCREASES SKIN ELASTICITY.

**CYCLODEXTRINS:** LIFTING EFFECT.



**HIBISCUS EXTRACT:** BOTOX-EFFECT



**LIFTONIN:** EXTRACT FROM A MICRO - SEAWEED, IT GIVES AN ANTI-WRINKLE LIFTING ACTION.



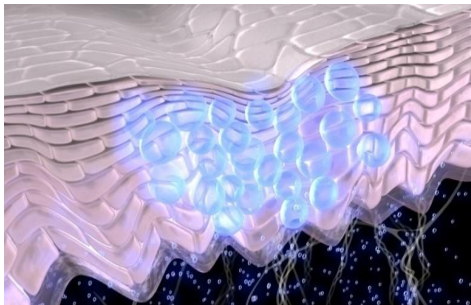
# LIPS VOLUMIZING GEL

GIVES IMMEDIATE VOLUME - HYDRATING



**ESSENTIAL OIL OF CINNAMON :**  
IT INCREASES LOCAL  
MICROCIRCULATION, STARTING  
AN IMMEDIATE TURGIDITY  
PROCESS.

**LIME BUTTER:** IT  
NOURISHES AND  
PROTECTS THE SKIN,  
MAKING IT MORE  
ELASTIC.



**ULTRA FILLING  
SPHERES:**  
MICROSPHERES  
ABLE TO DEEPLY  
MOISTURIZE THE  
SKIN.

**ACTIVE PRINCIPLE "X"**  
PLANT WITH  
VOLUMIZING ACTION.



# COMPACTING - REDUCING LEGS CREAM

DEEP ACTION ON LOCALIZED FAT AND TONING

## XJ 75 SILHOUETTE

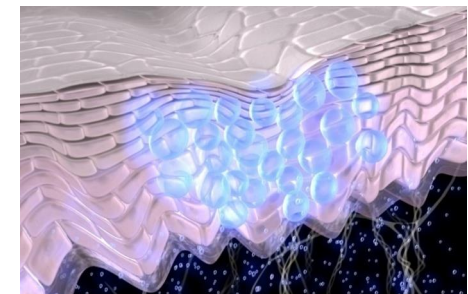
EXTRACT OF COCCOLOBA  
UVIFERA. IT IS MICRO  
ENCAPSULATED TO ALLOW  
A DEEP PENETRATION. IT  
REDUCES CELLS INVOLVED  
IN THE FORMATION OF FAT



**ULTRA FILLING SPHERES:**  
MICROSPHERES ABLE TO  
DEEPLY MOISTURIZE  
THE SKIN.

## EXTRACT DROSERA RAMENTACEA

CARNIVOROUS PLANT, IT  
REDUCES THE  
ADIPOCYTES SIZE.



# CIRCULATION ACTIVATOR BODY SERUM

TREAT HARD CELLULITE AND FAT, FAVORING THE DRAINAGE



**BUTCHER'S BROOM, CENTELLA , GINKGO: THE SYNERGY OF THESE EXTRACTS CARRIES OUT AN EFFICIENT PROTECTIVE ACTION FOR MICROCIRCULATION.**

**ARNICA : IT ELIMINATES STAGNANT LIQUIDS.**



**COUPERINE: MIX OF PLANT EXTRACTS WITH ANTI-INFLAMMATORY ACTION.**

**ESCIN: ACTIVE INGREDIENT EXTRACTED FROM HORSE CHESTNUT, IT PROMOTES DRAINAGE AND HELPS TO STRENGTHEN THE CAPILLARIES WALLS.**



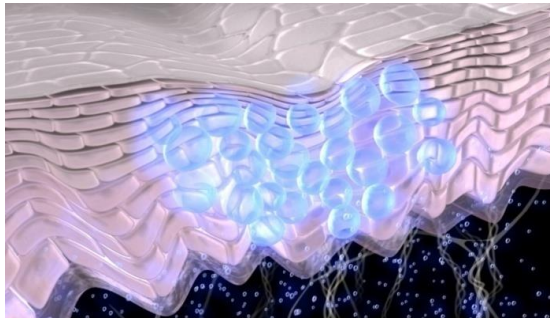
# BREAST TONING VOLUMIZING CREAM

VOLUME EFFECT- GIVES TONICITY AND COMPACTNESS

**LIME BUTTER:** IT  
NOURISHES AND  
PROTECTS THE SKIN,  
MAKING IT MORE  
ELASTIC.



**EXTRACT OF MANGOSTEEN FRUIT:**  
INCREASES CELLS VOLUME AND  
GIVES AN EVIDENT “VOLUME”  
EFFECT



**ULTRA FILLING SPHERES:**  
MICROSPHERES ABLE TO  
DEEPLY MOISTURIZE THE  
SKIN.



**VEGETABLE OILS MIX: PREVENT  
SMALL SCARS AND SOOTHE THE  
REDNESS**

# ANTI-AGE HAND CREAM

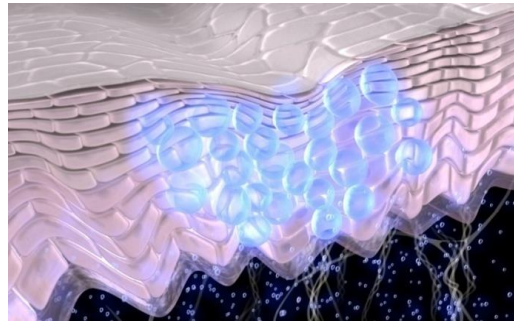
ANTI-AGING IMMEDIATELY EFFECTIVE, LIGHTENING, SHINING , SOOTHING, HYDRATING



**POWDER PEARLS:**  
SHINING ACTION.



**EXTRACT OF MALT :** ABLE TO  
WORK ON MELANO-GENESIS  
WITH LIGHTENING, SHINING  
AND ANTI-AGING ACTIVITY.



**ULTRA FILLING SPHERES:**  
MICROSPHERES ABLE TO  
DEEPLY MOISTURIZE  
THE SKIN.

**SHEA BUTTER:**  
NOURISHES AND  
PROTECTS THE SKIN  
MAKING IT MORE  
ELASTIC AND VELVETY



**VITAMINAE E + ANTI-OXIDANT SUBSTANCES**

# CREMA QUANTUM

IMMEDIATE LIFTING EFFECT – PREVENTING SKIN AGING BY COUNTERACTING FREE RADICALS - SMOOTHENS THE SKIN TONE

**CERAMIDES:** MIXTURE OF CERAMIDES DERMO SIMILAR WITH FILMOGENIC PROTECTIVE ACTION THAT PREVENTS SKIN DEHYDRATION.



**RICE STARCH:** A SUBSTANCE THAT PERFORMS AN ASTRINGENT ACTION ON THE PORES, IT ABSORBS AND CREATES A LIGHTENING AND SMOOTHING MAT EFFECT OF THE SKIN.



**HIBISCUS EXTRACT:** VEGETABLE DERIVATIVE WITH A "SIMILAR BOTOX" ACTION, WITHOUT CONTRAINDICATIONS OF THE CLASSIC BOTULIN; EFFECT LASTS A FEW HOURS FROM THE APPLICATION.



**VITAMIN E:** ANTIOXIDANT, IT PREVENTS PREMATURE SKIN AGING.

**THANK YOU FOR  
YOUR ATTENTION**