



HAYBROOK & CO<sup>™</sup>  
EQUINE EXCELLENCE



# ABOUT US

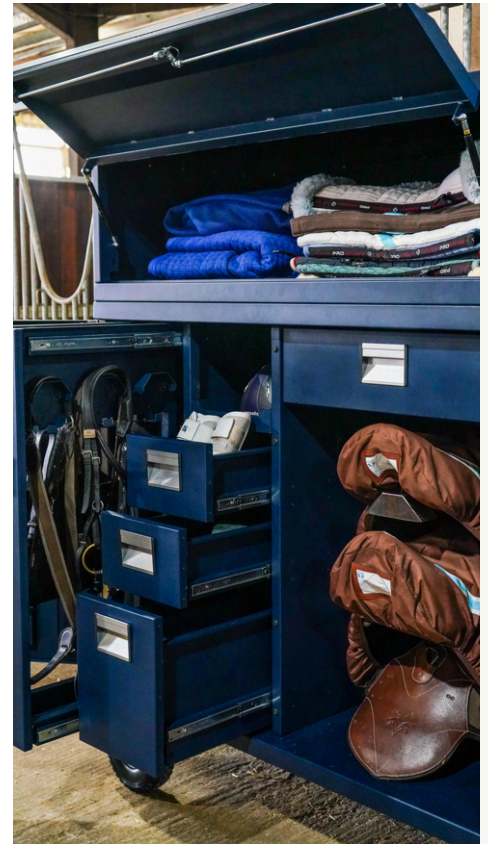
Haybrook & Co was brought to light in 2022 when they began designing and manufacturing luxury equestrian lockers within the heart of the Warwickshire countryside.

With the support of sister companies PNJ Engineering and Gearmate collectively having over 20 years manufacturing experience this has enabled Haybrook & Co to form its very own equestrian range.

Founded in 2002, PNJ has been a Tier 1 supplier to Global OEM's such as Fiat Group, Massey Ferguson, AGCO Corporation, Cummins Inc. and JCB group. Gearmate's main manufacturing and assembly process first began at its sister company PNJ Engineering.

The idea for Gearmate was created to provide the UK and beyond with innovative vehicle storage with a no drill solution. Over the years Gearmate has developed a number of bespoke projects within an array of industries for both the commercial and consumer markets. Gearmate is now 7 years old and since inception It's seen 100% growth year on year, and aims to continue at this rate.

Haybrook & Co is part of a group of privately-owned companies that have been supplying the automotive sector for over 20 years using industry leading machinery and sourcing materials and sub-components from quality assured UK suppliers.





# PRODUCT RANGE

Haybrook & Co offers carefully curated storage solutions to methodically store your equine equipment.

The product range consists of single lockers, double lockers, top boxes and vehicle accessories.

Our lockers have been given unique product names, which derive from the world of eventing.

The locker range is available in array of colours with the option to personalise your lockers.





# TRANSPORTATION

Haybrook & Co lockers are designed to provide you with the ultimate transportable storage solutions for your equine needs.

Manufactured using aluminium with a durable steel structure our lockers weigh approximately 60kg-120kg. This enables the lockers to be easily transported from your vehicle to the yard as well as accompanying you to and from events.

Every locker is equipped with tie down points, allowing you to securely load them onto your horse trailer, lorry or simply leave them tied to your stable door, tack room and beyond.



# THE SKINNY

## Single Locker

- Mirror feature
- Bridle hooks
- Fully ventilated
- Upper inner drawer
- Puncture proof wheels
- Equipped with two handles
- Lightweight for transportation
- Adjustable pullout saddle racks
- Transport heavy loads up to 100kg
- Array of colours and personalisation



# THE BOUNCE

Single Locker with detachable top box

- Mirror, Bridle hooks
- Lockable front door
- Upper inner drawer
- Puncture proof wheels
- Lightweight for transportation
- Adjustable pullout saddle racks
- Transport heavy loads up to 100kg
- Fully ventilated locker and top box
- Array of colours and personalisation
- Detachable top box with gas strut door



# THE OXER

Double locker

- Mirror
- Whiteboard
- Clothing rail
- Bridle hooks
- Foldable table
- Document holder
- Four storage drawers
- Adjustable Saddle racks
- Double lockable doors
- Array of colours and personalisation

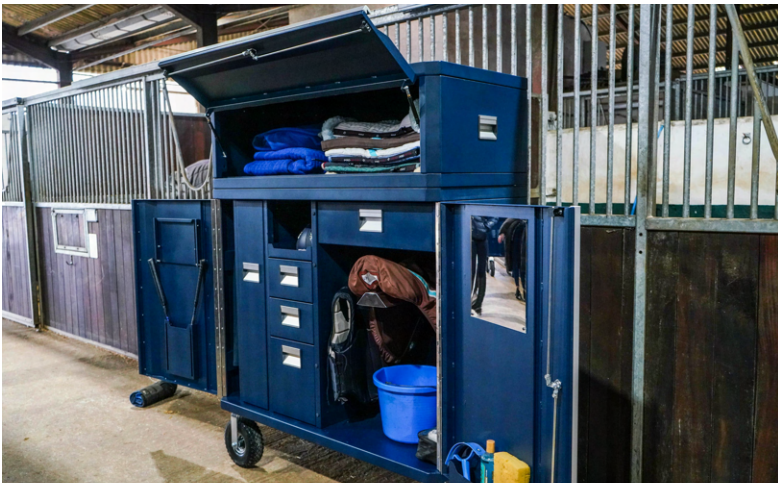




# THE COMBINATION

## Double locker with top box

- Bridle hooks
- Clothing rail
- Foldable table
- Document holder
- Four storage drawers
- Mirror & whiteboard
- Double lockable doors
- Adjustable saddle racks
- Array of colours and personalisation
- Detachable top box with gas strut door





**NAVY BLUE**



**HAYBROOK & CO™**  
EQUINE EXCELLENCE



**BLUE GREY**



**TURQUOISE**



**BURNT ORANGE**



**HAYBROOK & CO™**  
EQUINE EXCELLENCE



**BEETROOT**



**YELLOW**







# HARD TOPS

What would you choose?

All Gearmate tops are designed to combine both functionality and style.

Choose between our Pro Hardtop canopy, tonneau cover or the Gear Canopy.

Our team are always on hand to help talk you through your options and what might work best for you.

[WWW.GEARMATE.CO.UK](http://WWW.GEARMATE.CO.UK)



# HARDTOP OPTIONS



## PRO HARDTOP CANOPY

The Gearmate Pro canopy is constructed with aluminium to provide a hardwearing and sturdy hardtop, designed to have the largest gullwing and tailgate aperture available on the European market.



## HARDTOP CANOPY

The new hardtop gives you easy access to the bed with full-width doors without compromising on the structural integrity of the canopy, allowing you to access your gear hassle free, with no obstruction along the top edge of your wheel arch.



## GEARDECK

The perfect choice for the pickup owner, a versatile tonneau cover featuring three side openings, giving pickup owners endless possibilities for the use of their vehicle, whether that be work, play or both.



# PICKUP ACCESSORIES



## GM226 TWIN DRAWERS

- External dimensions: (Width x Depth x Height)
- 1030mm x 1345mm x 226.5mm
- Internal drawer dimensions: (Width x Depth x Height)
- 399mm x 1300mm x 135mm
- 75kg drawer capacity / 200kg deck capacity
- Wooden deck with heavy duty rubber finish



## GM300 TWIN DRAWERS

- External dimensions: (Width x Depth x Height)
- 1030mm x 1345mm x 300mm
- Internal drawer dimensions: (Width x Depth x Height)
- 399mm x 1300mm x 210mm
- 75kg drawer capacity / 200kg deck capacity
- Wooden deck with heavy duty rubber finish



## NARROW SLIDE

With 75% Extension, 200kg Load Capacity, a single hand operation and multiple locking positions for increased security.

External Dimensions:

530 x 1295 x 140 Width x Depth x Height (mm)

Deck Dimensions:

500 x 1240 x 95 Width x Depth x Height (mm)

Double narrow slide also available.





# PICKUP ACCESSORIES



**\*Infill pods and the tailgate flap are only compatible with Geardrawers.**



## INFILL PODS

The Gearmate Infill-Pods work off the side of your Gear drawers, to tidy up your load space and give additional storage options.

Sizes vary depending on drawer/vehicle.



## LOCKING PODS (FRONT OR TOP)

The Gearmate Infill-Pods work off the side of your Geardrawers, to tidy up your load space and give additional lockable storage options. Available with front locking or top locking pods. (Front locking not available for Ford Ranger)



## TAILGATE GAP FLAP

Covers the gap between the truck bed and tailgate, preventing items from dropping into the gap.

In order to fit, the user must have infill pods with Geardrawers.

\*Sizes vary depending on vehicle.



# PICKUP ACCESSORIES



\*Sizes vary from vehicle.



## GEARSLIDE

The Gearslide offers an effective solution to accessing your load space.

- Dimensions: 1024mm x 1344mm x 140mm
- (Width x Depth x Height)\*
- 800kg load rating when closed
- 400kg capacity extended load rating



## T SLIDE

Shaped to the contours of each truck bed, the T-Slide utilises the maximum width of the available bed area.

- 1290 mm x 1340 mm x 100mm / 175 mm
- (Width x Depth x Height)\*
- 800kg load rating when closed
- 400kg capacity extended load rating



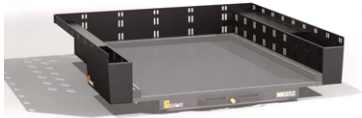
## GEARSLIDE TOP

The Gearslide top is compatible with all Gear drawer systems, giving you maximum access to your load space with 75% extension, 200kg capacity, 4 locking positions for security and a safety release catch to open and close.

- External Dimensions: 1030 x 1295 x 140
- Width x Depth x Height (mm)
- Deck Dimensions: 1020 x 1240 x 95
- Width x Depth x Height (mm)



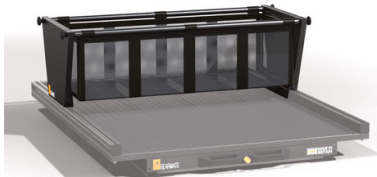
# PICKUP ACCESSORIES



## WHEEL ARCH SURROUNDS

The wheel arch surrounds are attached to your Gearslide, to maximise the space round the wheel arch, allowing for extra storage space.

Only available with the Gearslide.



## HAMMOCK FOR THE GEARSLIDE

Prevents your gear from moving around, an organised storage option to go with your Gearslide.

- Dimensions: Width x Depth x Height (mm)
- 930 x 400 x 240

\*Please ensure you check your truck bed dimensions if you have a Roll-top cover or Tonneau.



## LOCKABLE DIVIDER

The lockable divider allows you to maximise the drawer deck space. Mesh divider with lockable door frontage

\*Available with one or two doors

Versatile alternative to a dog box

Different sizes and configurations are available\*

Only available with Gear drawers.

Quick attachment and removal to the drawers.



# PICKUP ACCESSORIES



## DOG BOX

Width x Depth x Height (Lid Open/Lid Closed) (mm)  
670 Dog Box: 485 x 950 x 670/540  
600 Dog Box: 485 x 950 x 600/540  
550 Dog Box: 485 x 950 x 550/490  
Compatible for 226 & 300mm Drawers, and Gearslides.



## DOUBLE DOG BOX

Width x Depth x Height (Lid Open/Lid Closed) (mm)  
670 Dog Box: 485 x 950 x 670/540  
600 Dog Box: 485 x 950 x 600/540  
550 Dog Box: 485 x 950 x 550/490  
Compatible for 226 & 300mm Drawers, and Gearslides.



## SADDLE HOLDER

Safely store and transport your saddles within your vehicle.

Compatible with Geardrawers and Gearslides.  
With extra storage for your riding helmet and equestrian equipment.



# SUV ACCESSORIES



## SUV DRAWERS SINGLE OR TWIN

1005mm x 914mm x 265mm (Width x Depth x Height)  
Internal: Single - 860mm x 880mm x 175mm  
Internal: Twin - 385mm x 880mm x 175mm  
100% extension lockable drawer  
Adjustable drawer dividers



## SUV DOG BOX

Deck Dimensions: 597mm x 955mm x 95mm  
(Width x Depth x Deck Height)  
External Dimensions: 623mm x 998mm x 170mm  
Locking Door  
Quick attachment and removal to the drawers  
Available for both Single and Twin Drawer



## SUV SLIDE

1010mm x 916mm x 170mm  
(Width x Depth x Height)  
75% load bed extension  
150 kg load capacity  
Single hand opening mechanism  
Multiple locking positions for increased security





# DEFENDER ACCESSORIES



LAND ROVER > DEFENDER 90 > 1990 - 2016

LAND ROVER > DEFENDER 110 > 1990 - 2016

LAND ROVER > DEFENDER 110 > 2021

\*SIZES VARY FROM VEHICLE

## DEFENDER DRAWERS

100% extension lockable drawer  
Adjustable drawer divider  
Rubber anti-slip deck surface  
Locking Pod for extra secure storage

## DEFENDER SLIDE

External Dimensions: 623mm x 1000mm x 166mm  
Deck Area: 597mm x 953mm (Width x Depth),  
Deck: 94mm (Height), 75% load bed extension,  
200 kg extended load capacity

## DEFENDER DOG BOX

450mm x 750mm x 675mm (Width x Depth x Height)  
Option 1: Dog Box mounted on Pod  
Option 2: Dog Box mounted on Drawer, (If no slide)

## DEFENDER RACKING

200mm x 865mm x 700mm (Width x Depth x Height)  
Only available on left hand side, 60kg shelf load capacity. Offside and Nearside configurations available for each. Lockable storage and adjustable shelf heights

With a 100% extension drawer and adjustable drawer dividers, we created the perfect system to fit in your Land Rover Defender. Making your storage solutions easier with an additional Locking Pod and an optional dog box.



SINGLE DRAWER WITH EXTENDED POD  
NEW DEFENDER 110 DOG BOX WITH REMOVEABLE TRAY  
SINGLE DRAWER WITHOUT EXTENDED POD





[WWW.HAYBROOKANDCO.CO.UK](http://WWW.HAYBROOKANDCO.CO.UK)

Unit 15, Kinwarton Farm Road, Arden Forest  
Industrial Estate, Alcester, Warwickshire, B49 6EH

T: 07738 770037  
E: [sales@haybrookandco.co.uk](mailto:sales@haybrookandco.co.uk)