

2020 ANNUAL REPORT

MCLEOD EMERGENCY FOOD SHELF

Lennie Albers

WWW.MCLEODEMERGENCYFOODSHELF.ORG | 808 12TH ST E GLENCOE MN 55336

MISSION

McLeod Emergency Food Shelf is committed to eliminating hunger and food insecurity as well as improving the health and well-being of our community through equitable access to healthy and nutritious foods, community education, and advocacy.

VISION

We envision a community where everyone has access to good quality nutritious food, understands the consequences of hunger and poor nutrition, and is committed to creating a stronger, healthier community.

We also recognize the dignity of all people and believe food is an essential need.

GUIDING PRINCIPLES

We are responsible and accountable to the respectful, effective, and efficient avenues of food procurement and distribution.

We incorporate a dignified and client-centered model where nutrition, health, and education opportunities are shared.

We believe innovation and community collaboration is essential to support initiatives and meet challenges.

SERVICE AREA

McLeod Emergency Food Shelf (MEFS) serves the general McLeod County area which includes the primary cities of Glencoe, Hutchinson, Brownton, Stewart, Silver Lake, Lester Prairie, Winsted, and Plato.

In accordance with The Emergency Food Assistance Program (TEFAP) requirement, any individual requesting support and physically present, or represented by proxy, at either distribution site or mobile location, shall be served.

LEADERSHIP

2020 Board of Directors

Barbara Jenneke, President
Jerry Schimelpfenig, Vice President
Joanne Jacques, Treasurer
Lloyd Graupmann, Secretary
Brittany Litzau
Aaron Holmgren
Mark Larson
Jerilyn Shearer
Eliza Tobon
Larry Maiers
Jeff Albers

2020 Staff

Lennie Albers, Executive Director & Glencoe Site Manager
Corinna Orlicki-Klima, Hutchinson Site Manager
Shelly Cardinal, Glencoe Site Assistant
Tiffany Waller, Hutchinson Site Assistant
Penny Fernandez, Hutchinson Site Assistant & Float
Marilyn Braun, Mobile Outreach Program Manager
Bruce Kalhoff, Mobile Outreach Program Manager

PROGRAM DESCRIPTION & OBJECTIVES

On-Site Client-Choice Grocery Distribution in Glencoe & Hutchinson

The primary program function of MEFS is to provide a variety of well-balanced food options – at no charge! The variety of foods available are in accordance with SuperShelf standards and are supported through robust food rescue partnerships with local grocers. In 2020, each household was welcome once-every-30-days for full grocery access as well as additional weekly, fresh produce-only distributions.

Mobile Outreach Program - Driving Away Hunger (MOP) – LAUNCHED AUGUST 2020

MOP provides the same quality and service as the On-Site Client Choice Distribution program while addressing transportation and mobility issues by bringing stocked shelves and coolers to designated locations throughout McLeod County. Cities served are Winsted, Lester Prairie, Silver Lake, Plato, Brownton, and Stewart. MOP parked at designated locations twice each month offering groceries and fresh produce much like the On-site SuperShelf model.

Migrant Housing Grocery Pack*

MEFS partners with Seneca Foods each May through November to provide pre-packaged groceries for individuals living in Seneca seasonal housing. This longstanding partnership provides food support for migrant workers as they adjust to the community and prepare for the harvest.

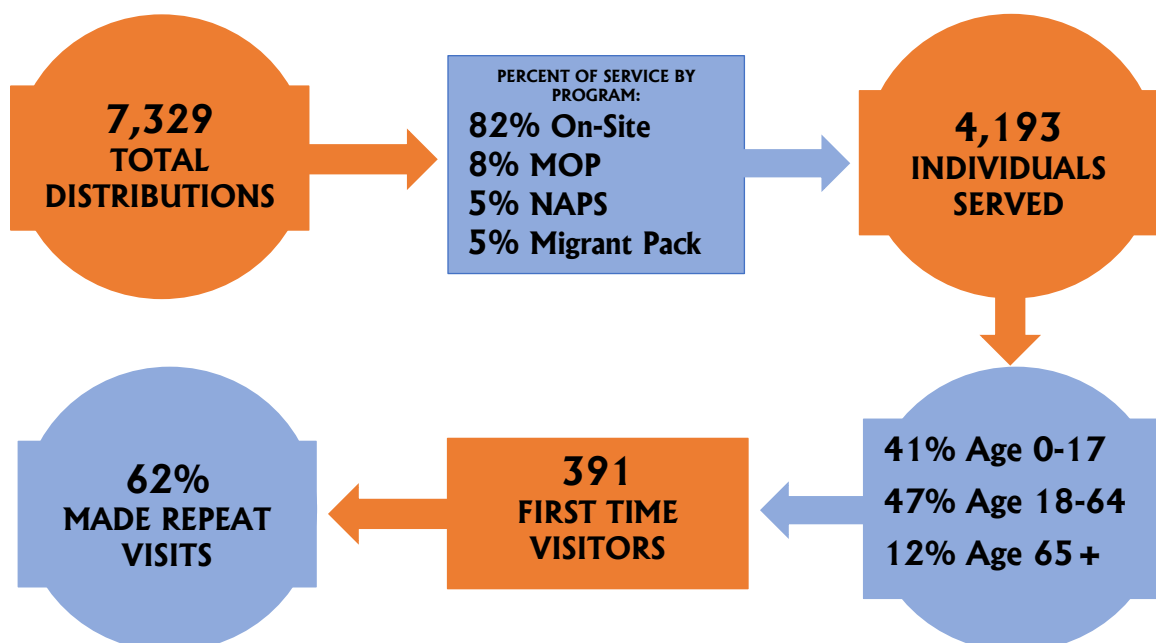
**Migrant individuals living in independent housing within McLeod County are included in the On-site Grocery Distribution totals.*

Nutrition Assistance Program for Senior (NAPS)*

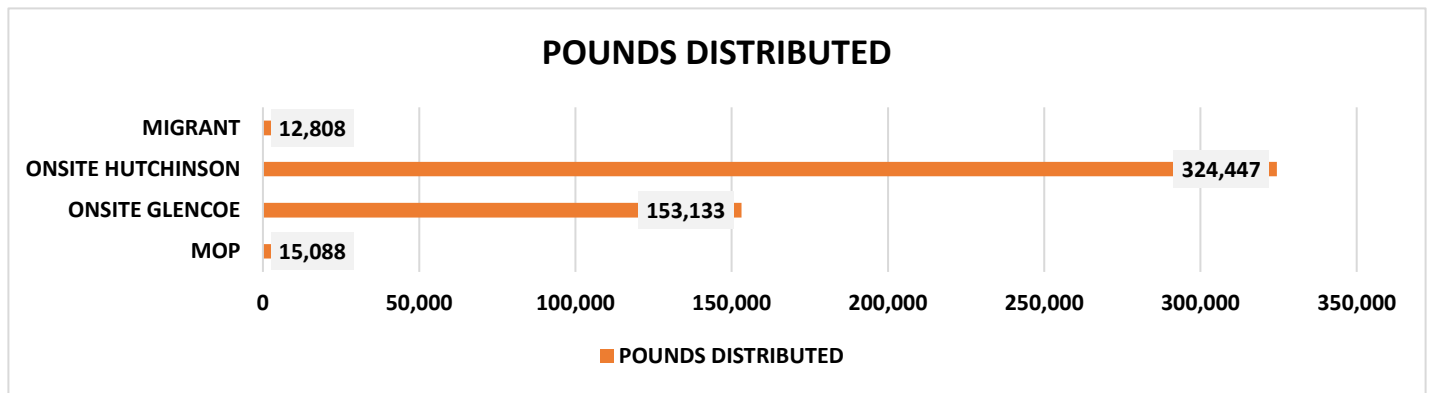
NAPS Distribution Site (Glencoe Site only). NAPS boxes are distributed Wednesdays following the 1st Tuesday of every month. Commodity Food Supplemental Program (CFSP) Authorized program for persons age 60+ who meet income requirements. All program requirements must be met to receive a box.

**NAPS boxes are not included in budgeted income or expenses as MEFS serves only as a distribution site for this program.*

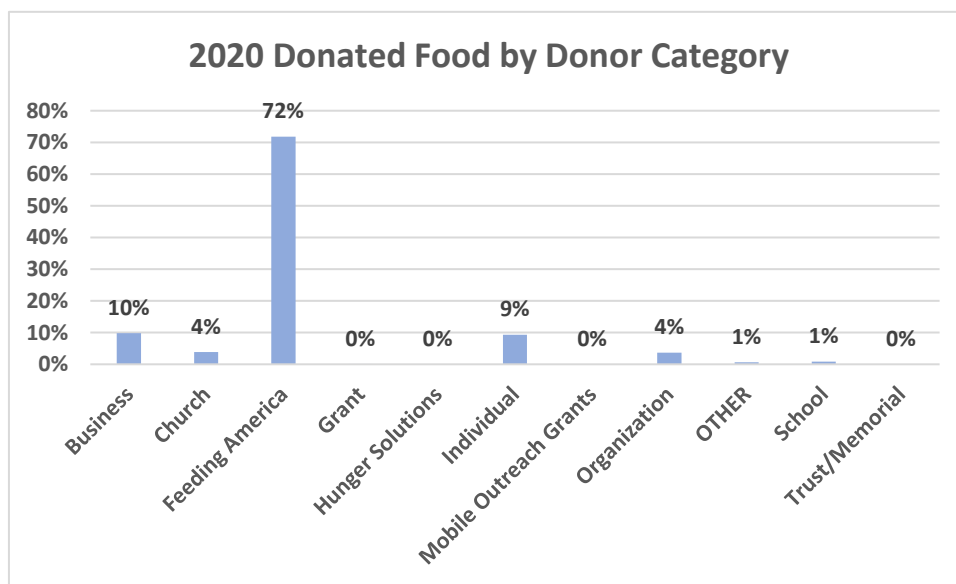
2020 DISTRIBUTION STATISTICS



In total, 505,466 pounds were distributed throughout 2020 providing ingredients and prepared foods for at least 391,620 meals. 100% of service was to people in need as MEFS recognizes food as a basic human need.



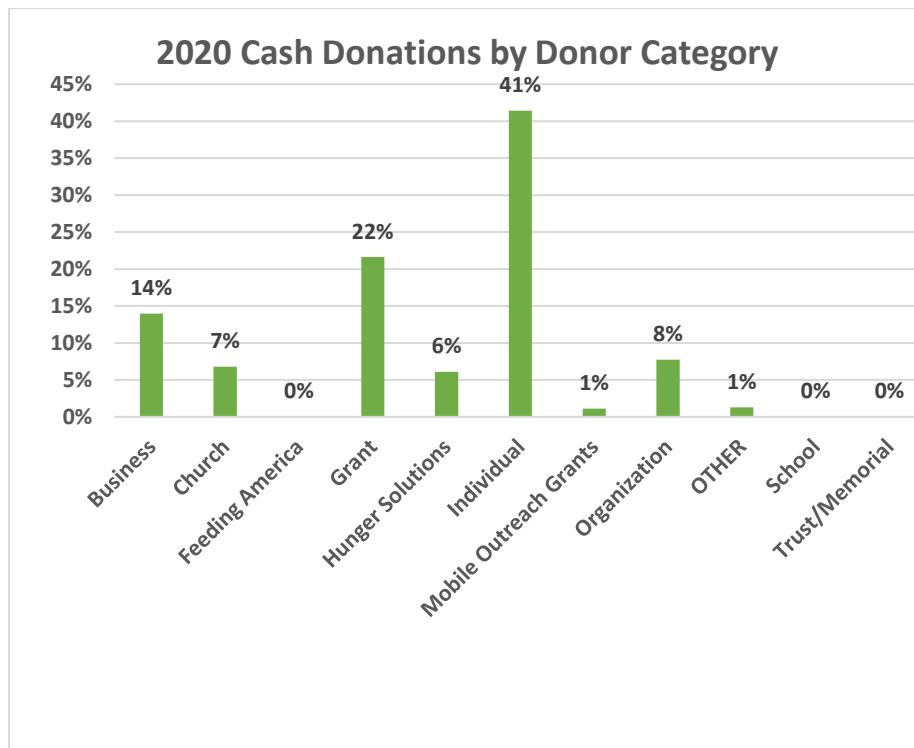
In partnership with eight community grocers across the county, nearly 343,000 pounds of “rescued” food safely entered the MEFS food stream for distribution. Food rescue accounted for 72% of donated food in 2020.



Without the daily support of grocery store staff and MEFS volunteer drivers, this program would not exist, and fresh and varied options would be extremely limited. MEFS’ Food Rescue partners include:



41% of financial support was donated by individuals (up 89% from 2019); 22% was granted through state and local (county) COVID-19 Relief Funds; 14% from businesses; 8% from organizations, and a respectable 7% from local faith partners as well as Hunger Solutions grants. Overall, donated cash increased by nearly 106% in 2020.



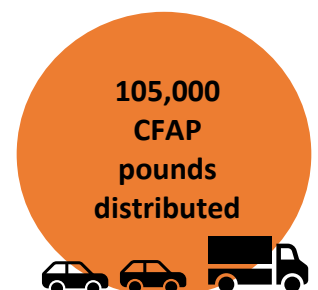
OUTSTANDING OUTCOMES & SIGNIFICANT EVENTS of 2020

McLeod Emergency Food Shelf faced 2020 with resounding fortitude as the events of the year and the impact of COVID-19 emerged throughout the community. In the times of uncertainty, MEFS staff and directors leaned into the support of the McLeod County Disaster Response Team. Weekly Zoom meetings were reoccurring events as attendees shared frustrations, ideas, and resources. Second Harvest Heartland also provided ongoing support in various formats to ensure all partners within the hunger relief network were heard and on the State of Minnesota’s priority list.

Beginning in April, MEFS and McLeod County Health & Human Services coordinated efforts to deliver groceries to individuals during the stay-at-home order. This effort continued well into 2021. Shopping lists were posted to the MEFS website so clients could continue to choose as much as possible without being present. MEFS implemented other options to ensure McLeod County had adequate food access including a hybrid-shopping model and curbside pick-up.

COVID relief dollars allowed Second Harvest Heartland to waive shared maintenance and delivery fees as well as provide shelf-stable emergency food boxes through 2020. Emergency boxes were ordered and stocked as COVID-19 ebbed and flowed throughout McLeod County. The boxes were distributed in combination with additional donated and purchased products for a healthy Migrant Pack. MOP kept several on hand and distributed to those accessing the vehicle prior to registration. McLeod County Public Health also stocked boxes from our supply for isolation cases on weekends.

MEFS also sponsored and assisted in the coordination of three COVID response (CFAP) community food distributions in June, September, and November as well as an additional November distribution in partnership with McLeod County United Way. The CFAP distributions provided a total of nearly 105,000 pounds and reached upwards of 1,050 area households made up of roughly 2,640 individuals.





In August, MEFS launched *Driving Away Hunger*, a Mobile Outreach Program (MOP), in direct response to barriers of food access including transportation and mobility. COVID-19 became more of a blessing than a curse during this time as start-up funds were granted through COVID relief funding. The assurance of funding and the spend deadline, fast-tracked decision-making and the program quickly took shape. Two program managers became part of the MEFS team by October. MOP also transitioned from the “fair-weather” model to the “winter” model to ensure continued food access with safety of all at the forefront. Orders were pre-packed one week prior to delivery beginning in December and would continue through March 2021.

MOP has also been accepted into The Emergency Food Assistance Program (TEFAP) as well as being registered to receive Seasonal & Off-Season Case Counted Produce. These programs, coupled with daily food rescue options, purchased products, and donated items allow MEFS to maintain a high standard of quality and variety, which is passed on directly to shoppers.

As the year closed, MEFS reported not only uninterrupted service, but also rapid and creative innovations to further close gaps in food access. The hard work was accomplished because of skilled and flexible staff coupled with the genuine support of 100+ dedicated volunteers who logged an excess of 10,400 volunteer hours. On paper, the value of MEFS volunteer support for 2020 is well over \$282,800.00. These two forces allow MEFS to maintain high-level service no matter the circumstance.

MEFS also maintains esteemed stewardship of donations, documenting 96% of expenses for programming; 3% for management; and 1% for fundraising.

FUNCTIONAL EXPENSE ALLOCATION

