



## 1030 CAMBRIDGE SQUARE, SUITE "E" GENERAL INFORMATION

SIZE	AVAILABLE	RENT	MIN. LEASE TERM	ESCALATION
3000 Sq. Ft. Ground level	Immediate	\$3,000.00 per month	2 Years	3% Annually
<b>Reception - Conference - 3 Private Offices - Kitchen / Break Room</b> <b>2 large open areas                      2 Private R/R with showers</b>				
<b>GROUND FLOOR                      HANDICAP ACCESSIBLE</b>				
<b>PRIME LOCATION AT FRONT OF CAMBRIDGE SQUARE OFFICE PARK</b>				
<b>Hi Speed internet available via Comcast Cable or Fiber Optic</b>				
<b>Professional On-Site Management</b>				

**CLICK "NEXT" TO SEE FLOOR PLAN**

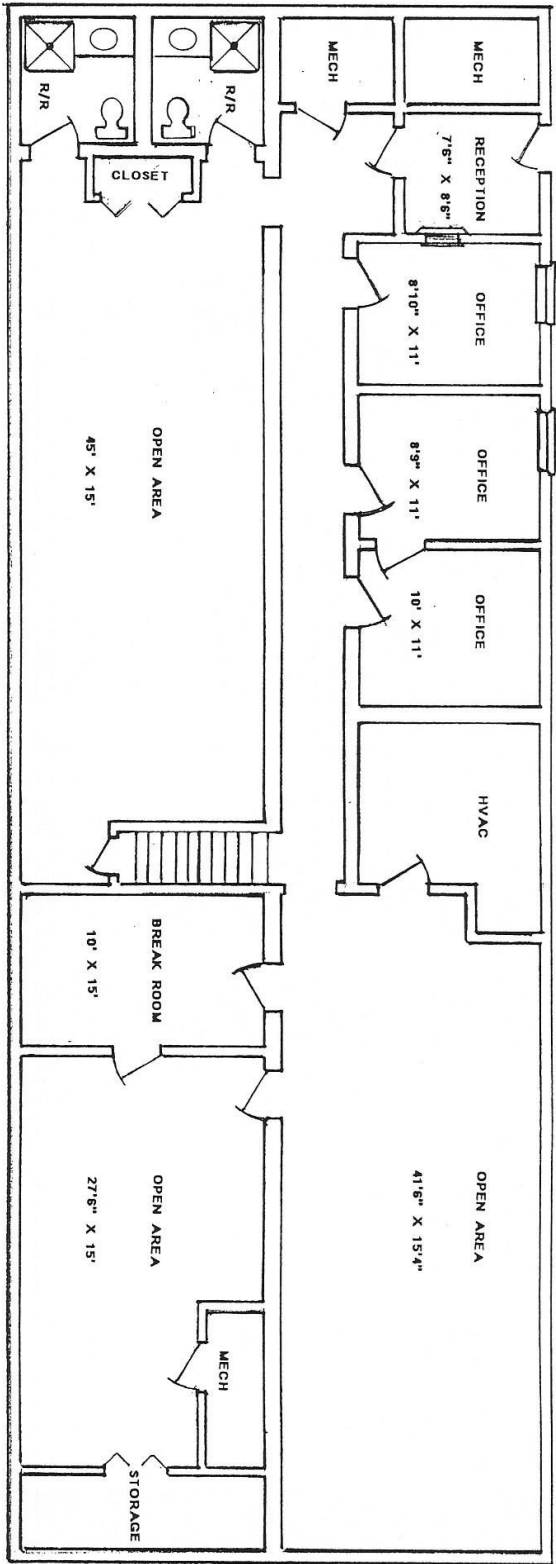
**For more information contact Wayne Giglia, 770-475-8035**

Williamsburg Management Services, Inc. (16734)  
1000 Cambridge Square, Suite A Alpharetta, GA 30009

The information contained herein is believed to be accurate but is not warranted.  
All prices and terms subject to change without notice.

THIS DRAWING PROPERTY OF "THE CAMBRIDGE GROUP, INC." ALL RIGHTS RESERVED

ALL SIZES ARE APPROXIMATE - ACTUAL DIMENSIONS MAY VARY



**1030 CAMBRIDGE SQUARE - SUITE "E"**

**3000 SQ. FT.**