



## 1070 CAMBRIDGE SQUARE, SUITE "E" GENERAL INFORMATION

SIZE	AVAILABLE	RENT	MIN. LEASE TERM	ESCALATION
2048 Sq. Ft. Ground Floor	Immediate	<b>\$2,700.00 per month</b>	3 Years	3 % Annually
<b><i>Premium Ground Floor Office Suite - Handicap Assessable - Just Renovated</i></b>				
<b>Perfect for Medical / Dental or Therapy</b>				
Landlord pays all routine maintenance (HVAC, electric, plumbing) No C.A.M. charge. No "pass through" charges to tenant.				
<b>Professional On-Site Management</b>				

**CLICK "NEXT" TO SEE FLOOR PLAN**

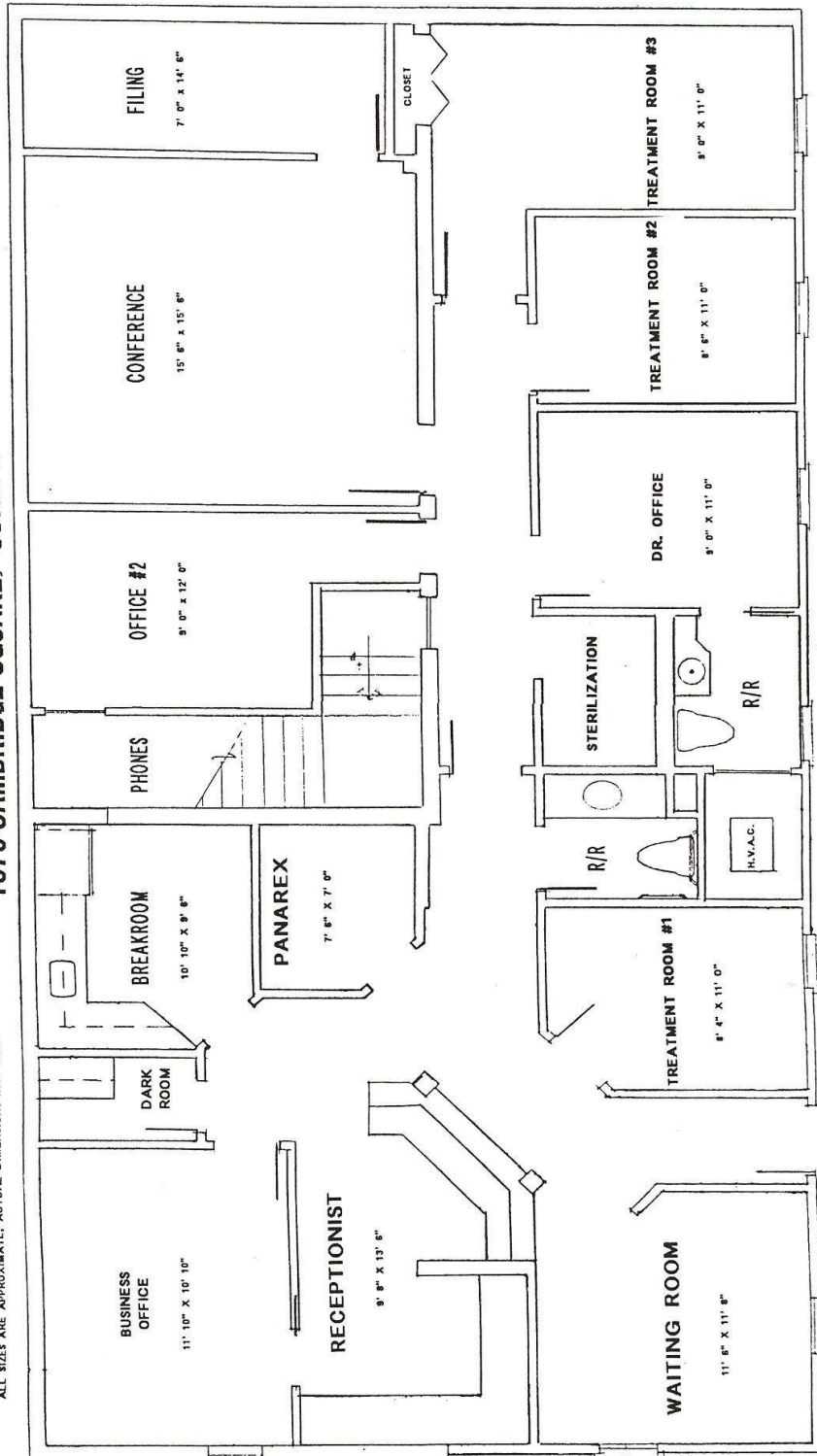
**For more information contact Wayne Giglia, 770-475-8035**

Williamsburg Management Services, Inc. (16734)  
1000 Cambridge Square, Suite A, Alpharetta, GA 30009

The information contained herein is believed to be accurate but is not warranted.  
Prices, terms and availability subject to change without notice.

# 1070 CAMBRIDGE SQUARE, "SUITE E"

ALL SIZES ARE APPROXIMATE, ACTUAL DIMENSIONS MAY VARY



2000 SQ. FT.

