

The Short Stay Elective Centre at St John's Hospital

As people in Scotland live longer, more of us will need routine operations to keep us as healthy as possible.

NHS Lothian is planning to create a new centre at St John's Hospital in Livingston.

This will help us meet rising demand and make sure that patients get the right treatment they need as quickly as possible.

The new centre of excellence, which will be joined on to the current hospital, will house five specialties:

Gynaecology

Orthopaedics

Urology

Colorectal

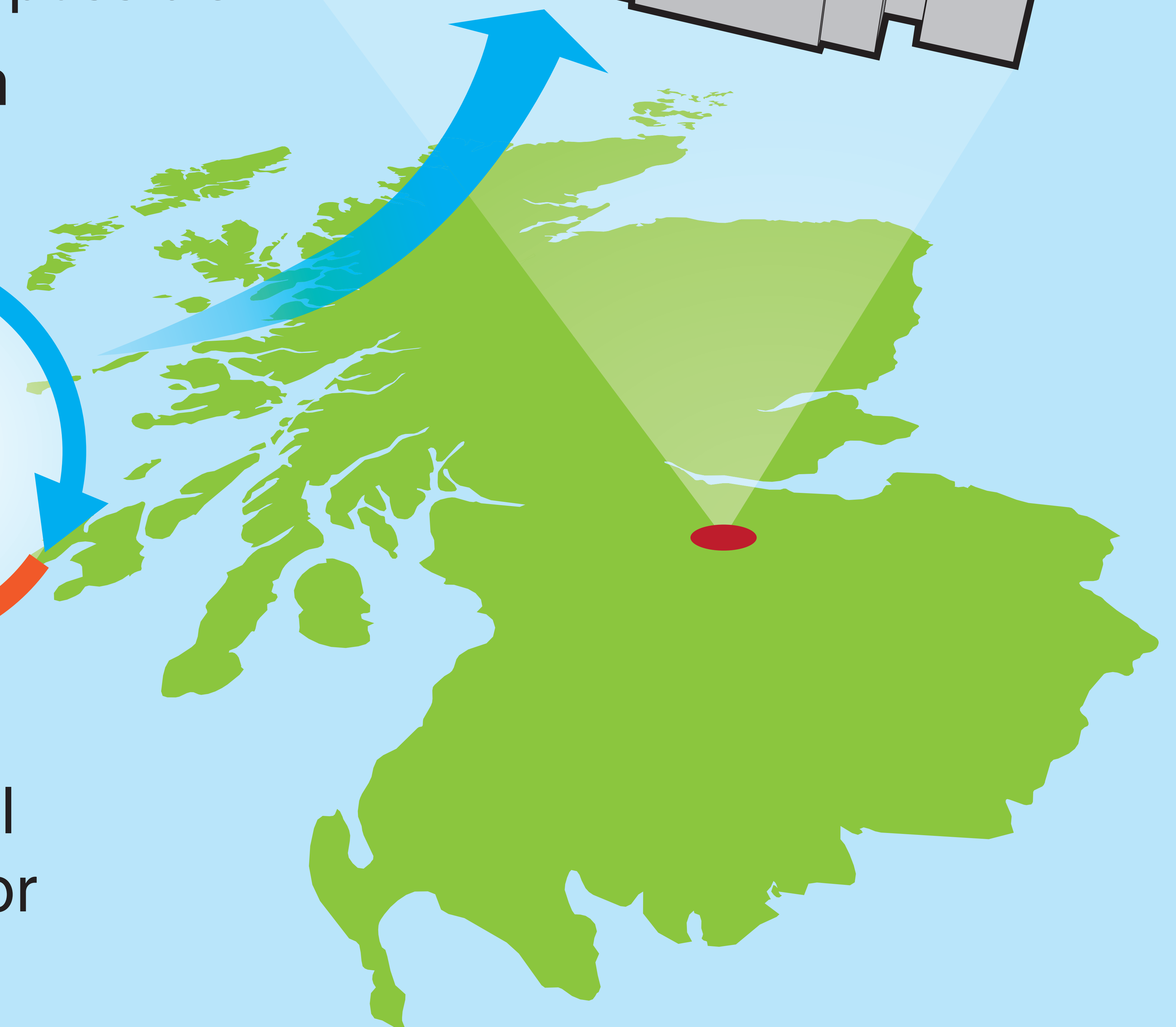
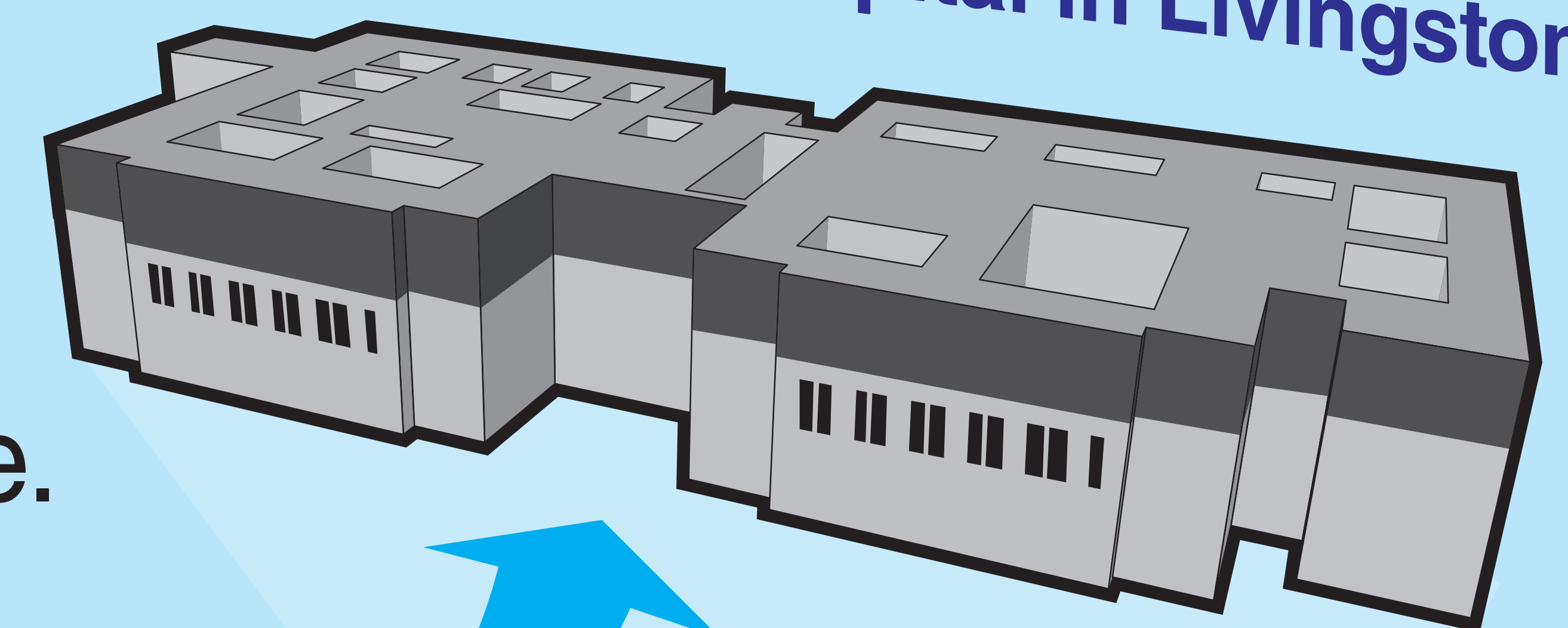
General Surgery

48
hours

It is not an emergency service. This is for planned, routine procedures, performed under local or general anaesthetic. Patients can expect to stay in hospital for less than 48 hours.



St John's Hospital in Livingston



What does the Short Stay Elective Centre (SSEC) mean for me?

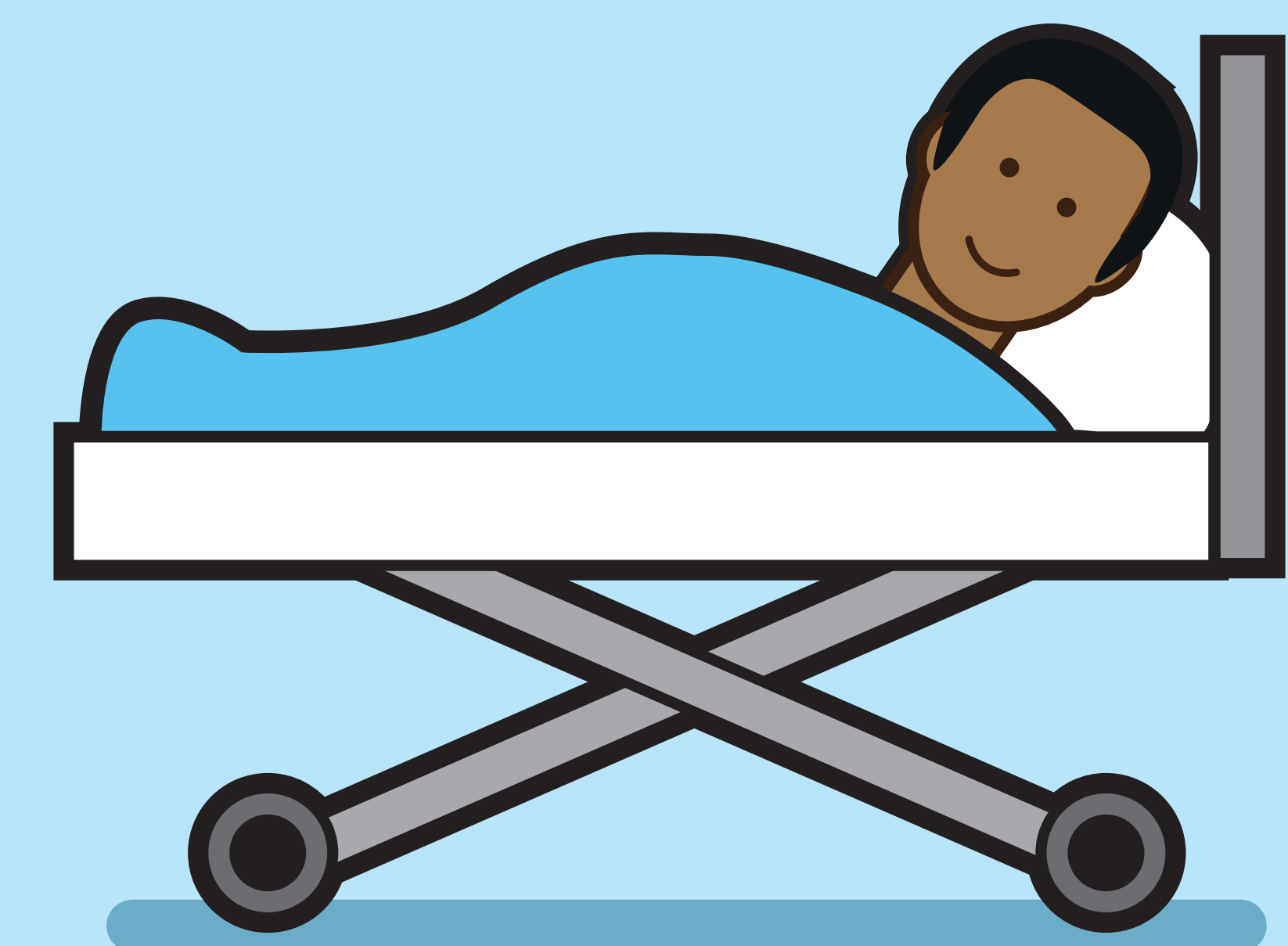
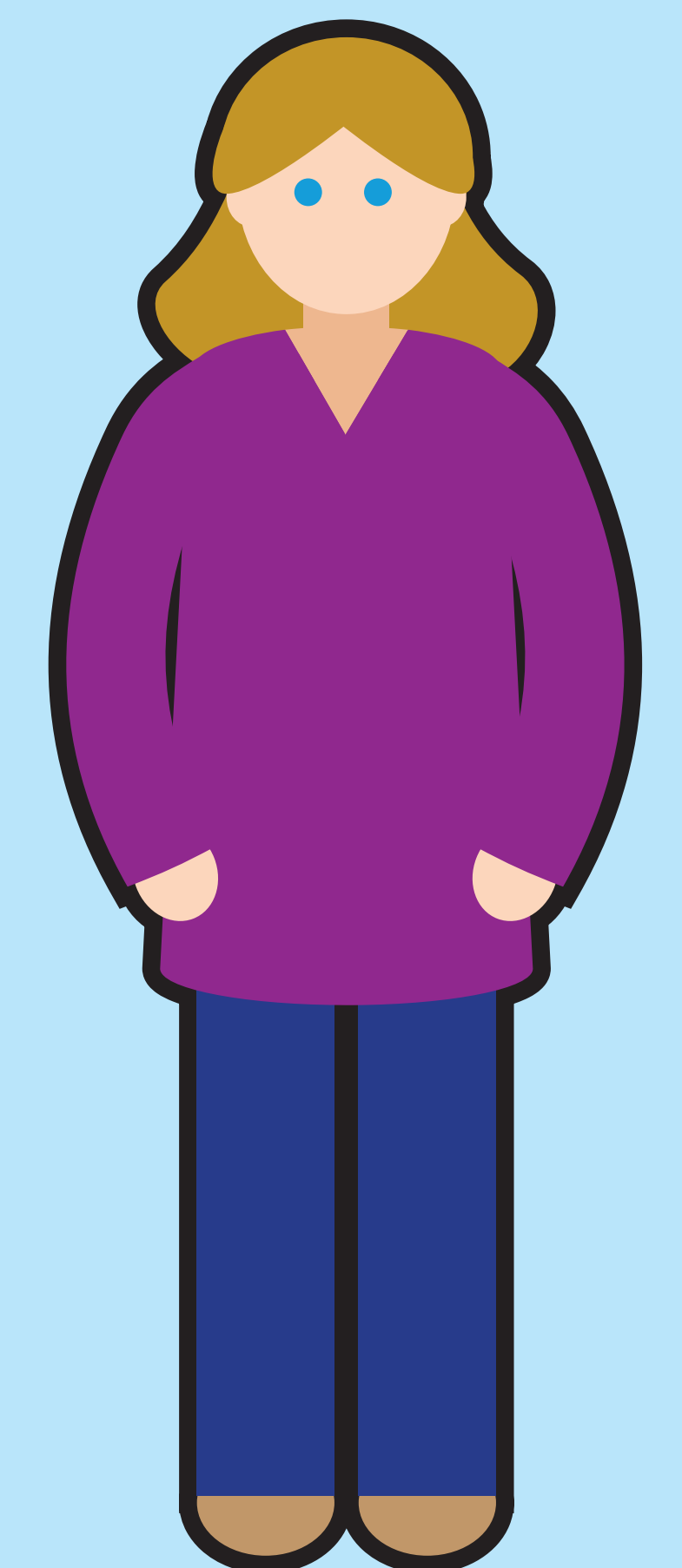
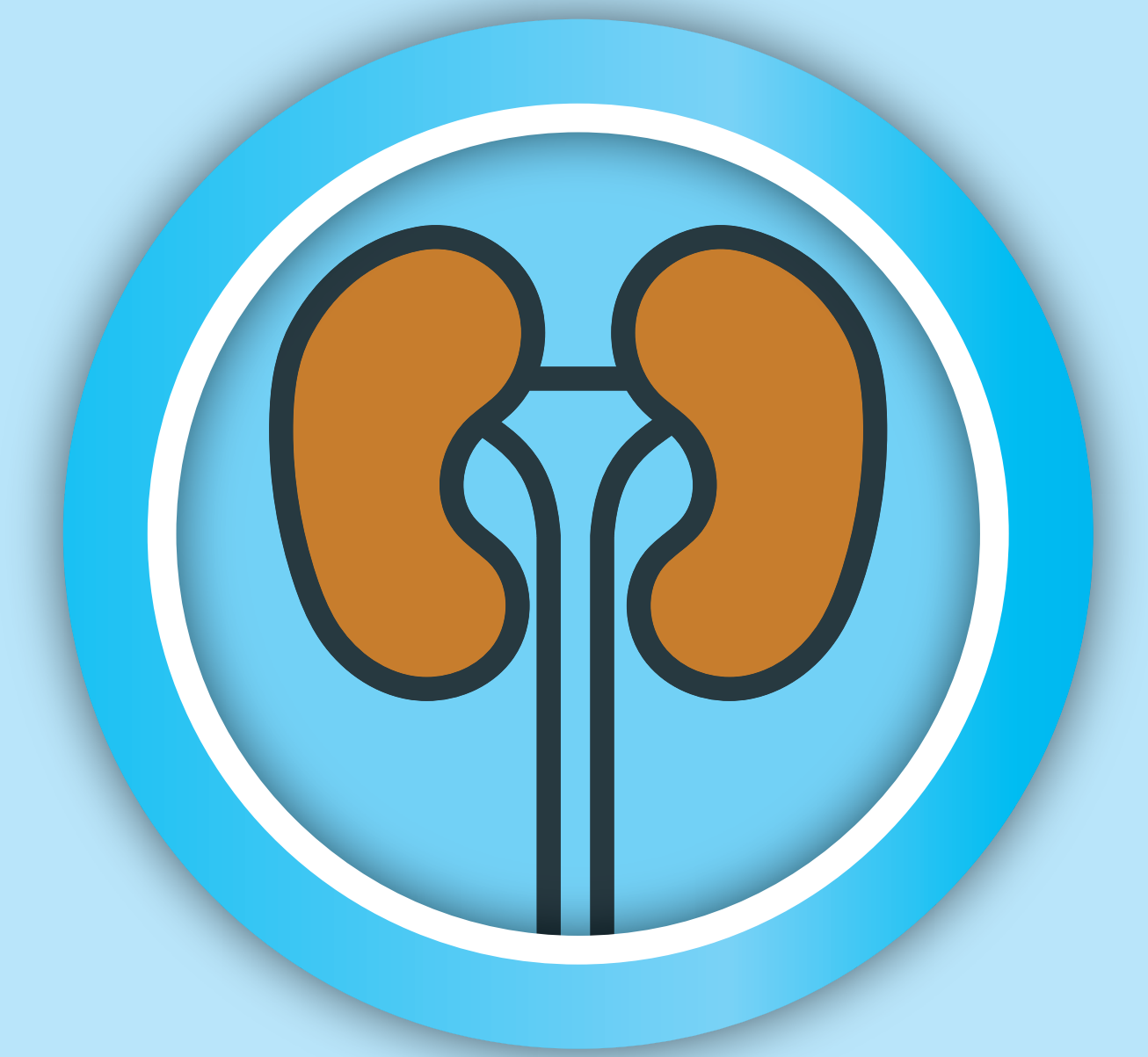
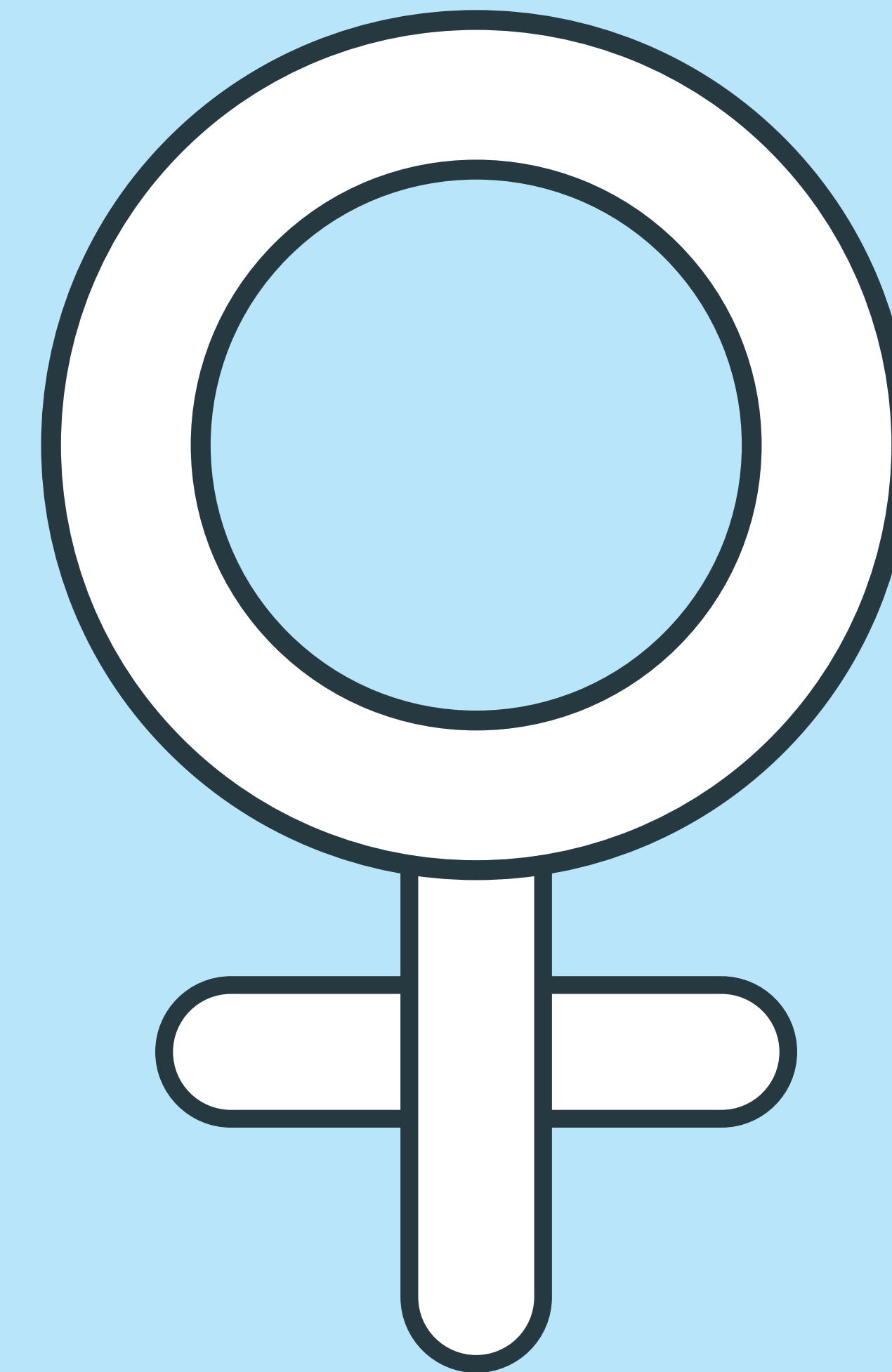
The SSEC will offer a range of straightforward routine operations in a purpose-built environment.

As demand increases for these types of procedures, the centre is designed to make sure you receive the treatment you require as swiftly as possible.

It will have operating theatres and a mix of inpatient and day case beds.

Your clinician will discuss with you the best place for your procedure, based on the type of surgery and your general health.

If the short stay elective centre is not considered suitable, patients will undergo their procedure in either the Royal Infirmary of Edinburgh or Western General Hospital.



What does it mean for staff?

We are confident that the SSEC will provide an excellent working environment for our staff.

Staff and patients are feeding into the design process to make sure the state-of-the-art facility meets the needs of everyone involved.

At the moment, we sometimes have to cancel planned operations because we need to use the operating theatres for emergencies. The new SSEC will separate our planned care from emergency care and reduce the risk of cancellation on the day of surgery. This will be better for patients, family and staff.

The SSEC provides exciting new career opportunities for existing staff and those outwith NHS Lothian.



Transport & Logistics

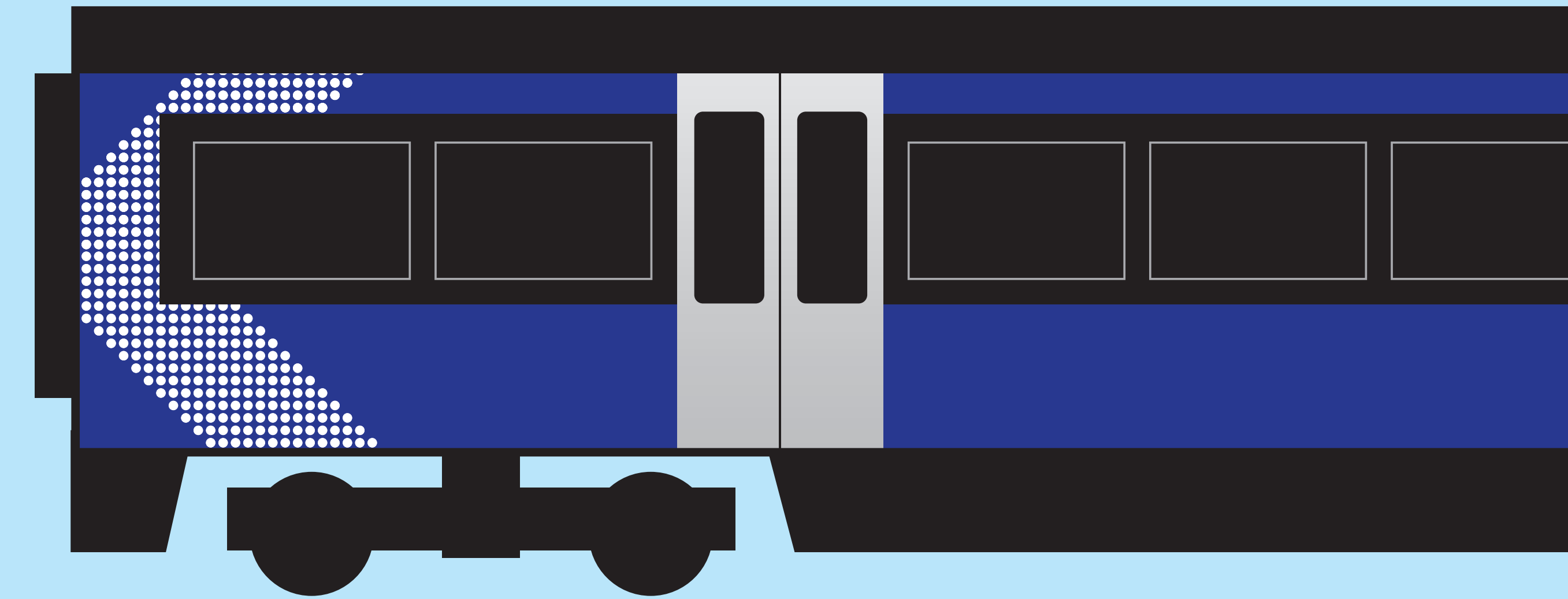
Patients currently travel to hospitals across NHS Lothian - the Western General Hospital, Royal Infirmary of Edinburgh and St John's Hospital - for planned surgical procedures. They may also be offered appointments outwith NHS Lothian.

The new centre will help make sure that patients can access care locally.

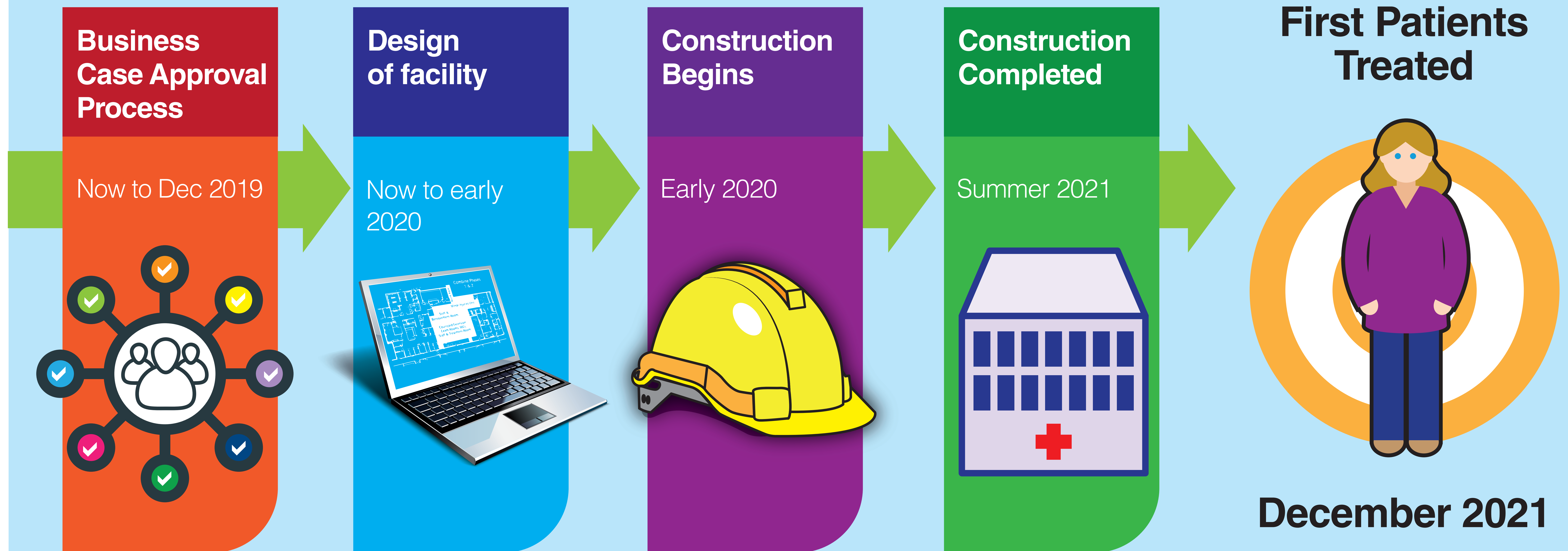
We know that travel to and from the site will be especially important to staff, patients and their relatives and we want to hear your views.

In the meantime, work is already underway to consider:

- Introduction of a Shuttle bus between the centre and Almondvale Football Stadium
- Construction of additional car parking
- Additional bus routes and shuttles stopping outside the hospital and linking Livingston North train station



Timescales and how to tell us what you think.



For further information, suggestions or just to let us know what you think please email:
getinvolved@nhslothian.scot.nhs.uk