



# Brooklyn North NYCDOE Borough Office

## Welcome to School Year

### 2020-2021

Project 100 with the seven Brooklyn North Drivers!

CSS, ILF, SEF, eSTEM, Early Childhood, Family & Community  
Empowerment, Developing Leaders

# Health and Safety Always Come First

PPE and cleaning supplies will be supplied to all schools, and DOE will have a **30-day supply** on hand at all times—with a hotline for principals to call for immediate resupply for their schools

There will be a **full-time nurse** in every public school building

Any school building or room found to have **inadequate ventilation will not be used** by students or staff

Students and staff will practice **physical distancing** in all school buildings

Students and staff will **wear face coverings** throughout the school day; if they do not have them, they will be provided for free

Students will **remain in pods** for as much of the day as possible

We will place **hand sanitizer in every classroom**

City-run testing sites will **prioritize free COVID testing and expedited results** for school staff; free testing is also available to all students, families, and New Yorkers citywide

We are **encouraging all DOE employees to be tested monthly**

# Health and Safety Always Come First

NYC Department of **Health and Test + Trace Corps** will immediately investigate confirmed cases to prevent spread of the virus

Schools will communicate with all students and families when there are confirmed cases in schools

When necessary, classrooms or school buildings will temporarily close to maintain safety of school communities and prevent spread of the virus

School buildings will close if the percentage of positive COVID-19 tests in New York City is 3% or more using a 7-day average—the most aggressive threshold in the nation

# NYC Public Schools will be cleaned and disinfected, day and night

All school buildings will be disinfected overnight, every night

High-touch zones will be cleaned multiple times throughout each day

Electrostatic disinfectors will clean surfaces daily with zero physical contact

# Ensuring Availability of PPE and Cleaning Materials

The City procured a large up-front order of cleaning supplies and PPE. These supplies are being delivered to schools and will be in place prior to the first day of school. They include: soap, disinfectant, hand sanitizer, sanitizing stations, electrostatic sprayers, medical-grade masks, and face shields. Custodial Engineers will work closely with school leadership to monitor their supplies and will make orders in order to maintain a 30-day supply. We have 7,350 building-based cleaning and maintenance staff working to make and keep schools safe and healthy.

# Ventilation in School Buildings

All DOE school buildings were surveyed by Division of School Facilities (DSF) staff this summer to assess the state of building ventilation and they are currently performing repairs in conjunction with the School Construction Authority. These repairs include fixing windows, repairing HVAC systems, and replacing air filters in buildings with central HVAC systems, from MERV 8 to MERV 13.

Prior to the opening of schools, we will communicate publicly to families and staff on the repairs being made to schools to ensure proper ventilation. All DOE school buildings were surveyed by Division of School Facilities (DSF) staff this summer to assess the state of building ventilation and they are currently performing repairs in conjunction with the School Construction Authority. These repairs include fixing windows, repairing HVAC systems, and replacing air filters in buildings with central HVAC systems, from MERV 8 to MERV 13.

Prior to the opening of schools, we will communicate publicly to families and staff on the repairs being made to schools to ensure proper ventilation.

# School Reopening Plans

Every school has in place a reopening plan, which identifies the following:

- Person responsible for regular communication with school community on reopening plan
- Continuity of learning plan, including model selection
- Person trained on COVID-19 protocols
- Person assessing students who are ill
- Isolation room number
- School counselor
- Technology coordinator
- Special education coordinator
- Multilingual learner coordinator



# Learning Model Selection District 15 and Brooklyn North

**Model 1** - Two cohorts with consistent days two days a week, and one alternating day. Five days a week every two weeks.

*20 schools in D15; 103 schools in BKN*

**Model 2** - Three cohorts with one consistent day a week, and two alternating days. Five days a week every three weeks.

*4 schools in D15; 20 schools in BKN*

**Model 3** - Three cohorts on a six day rotation, only available to middle and high schools. Five days a week every three weeks.

*2 schools in D15; 17 schools in BKN*

**Models 4 and 5** - Available only to District 75. May have students in school every other week for five days straight, with potential for some groups to be in-person full-time, dependent on student need.

*1 school in D15; 13 schools in BKN*

**Exceptions:**

*11 schools in D15; 81 schools in BKN*

# Learning Preference Survey Responses for 100% Remote Learning Requests

Brooklyn North District	Request for 100% Remote Learning
13	34%
14	31%
15	29%
16	26%
19	29%
23	26%
32	24%

# Key Elements of Supporting Student Learning and Well-being

All students--whether participating in blended or 100% remote learning—will study in **supportive environments with rigorous academic standards, five days a week.**

Schools will

- Know students well
- Integrate academic and social emotional learning
- Ensure continuity of learning
- Focus on priority learning

# Synchronous (“Live”) Daily Instruction

All students—regardless of how they attend school—will receive synchronous, or “live,” instruction **daily**.

Synchronous teaching can happen with whole class, small groups, or individually, and while it may look different across schools, grade bands, and content areas, schools are committed to making the most of live teaching to integrate academic and social emotional learning, and provide continuity for all students.

Students will also receive **asynchronous instruction** on remote learning days, engaging in learning activities to promote continuity of instruction and meaningful, connected learning experiences. This can include pre-recorded videos, independent work, and projects

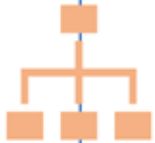
# Learning Management System (LMS)

A software application for the administration, documentation, tracking, reporting, automation and **delivery of instructional courses** or learning content.

Serves as a curriculum “container” for **what, how, where,** and **when** students will learn.

Most schools in Brooklyn North have selected Google Classroom.

# Social-Emotional Well-Being



The district's school counseling/guidance program should be reviewed and revised to plan, develop, and implement a Multi-Tiered System of Supports (MTSS).



As part of an MTSS framework, SEL, mental health, and well-being supports offered at all levels should reflect school-wide implementation of effective, efficient, and evidence-based practices and strategies that all students can access.



Offer all staff opportunities to heal together, to build strong, mutually supportive relationships, and to process their own emotions, including bus drivers, cafeteria workers, office workers, nurses, pupil personnel services staff, and administrators.



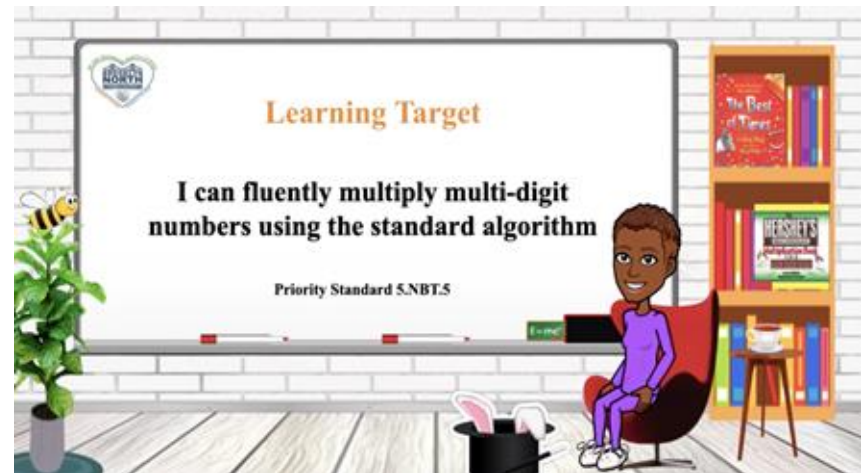
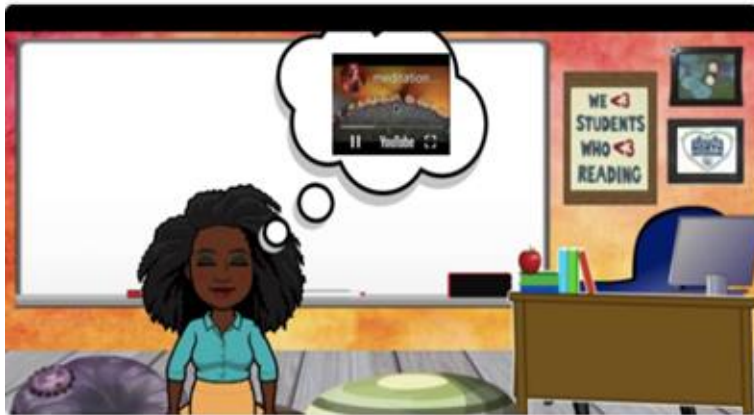
Leverage Transformative SEL to support the work of adult anti-racism and anti-bias work.

# Priority Standards

The DOE, UFT, and CSA have closely examined the NGLS in ELA and mathematics to identify those standards that are most urgently needed to ensure that our students have the skills they need to access rich, grade-level work in the 2020–21 school year, while attending to unfinished learning within the context of grade-level standards. Currently, the Brooklyn North Academic Response Team has created interactive bitmoji instructional learning environment videos that are aligned with the Priority Standards and are broadcasted on our very own One Brooklyn Television and can be viewed Monday-Friday from 9 am -11 am daily.

[ELA Priority Learning Standards](#)  
[Priority Learning Standards Video](#)

[Math Priority Learning Standards](#) [ELA](#)  
[Math Priority Learning Standards Video](#)



# One Brooklyn Television

**One Brooklyn TV is here in Partnership with BRIC!**

Spectrum 1993

Optimum 951

Verizon 47

You can also live-stream the channel at this link:

<https://iframe.dacast.com/b/37979/c/436169>

<https://brooklynnorth.strongschools.nyc>



*Sharing our Success*