

NAWSA JULY 2018 NEWSLETTER

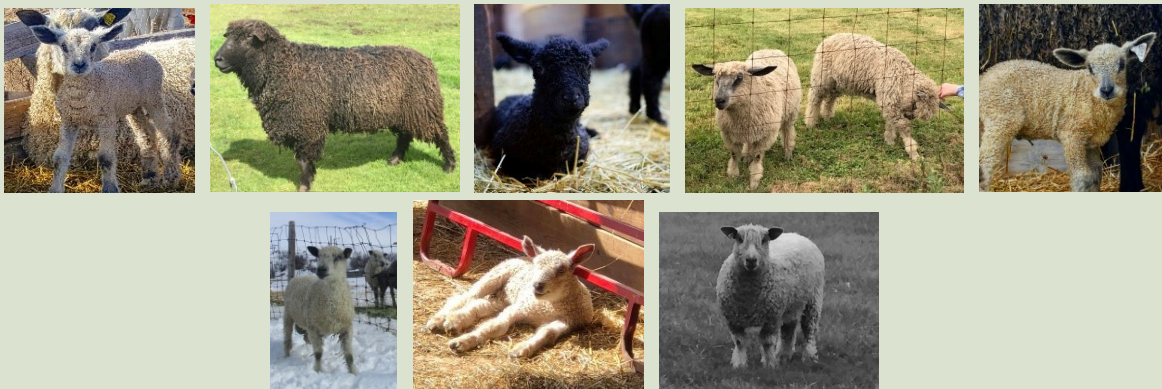


www.WensleydaleSheep.org

Happy summer 2018. There is a lot going on with the NAWSA this year. Welcome to George and Lynn from GLM Registry. They are our new Registrars and have done an amazing job so far. If you have any questions about your registrations or need help filling out any of our forms, please contact them at 541-825-8580. They are both very friendly and extremely helpful. We hope to soon offer online fillable forms that will make your membership and registration applications simpler to file. We will always keep downloadable forms for those who prefer them, and if you don't have access to a computer, you can contact us and we will mail you the forms you need.

Hope you saw the ad we placed in the Banner this spring. Keep your eye out for our next ad which will appear in Sheep magazine. We are calling for good sharp pictures of your NAWSA registered sheep so that we will have a large file to pull from for future ads. The resolution is very important so that the pictures will print clearly. When we use your photo, we will give your farm credit in the ad! We would like to advertise in larger fiber-based magazines occasionally, but the cost is prohibitive unless we either sell spots to individual breeders to have their farms listed in the ad or work together with other breed associations.

Keep sending in those pictures of your registered Wensleydales! We need lots of pictures to be considered for use in next year's ads. We include your farm info in the ad if one of your pictures is chosen. Here are a few for inspiration!



REMINDER

When Transferring your registered animals - do NOT mail your original Registration Certificates to AccuRegister. Cross that off all your papers so that you won't forget that they now go to GLM Registry

Please let us know where you would like to see the NAWSA place ads that will help promote you as a breeder and the breed as a whole. We can certainly consider local publications as well as national larger fiber-based magazines occasionally, but the cost is prohibitive unless we either sell spots to individual breeders to have their farms listed in the ad or work together with other breed associations. We are always looking for new ideas to promote and educate people about our lovely breed.



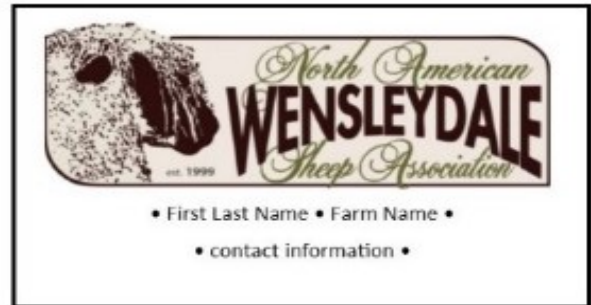
The NAWSA has two Facebook groups, one is private for members only of the NAWSA. (Discussion Group for the North American Wensleydale Sheep Association) We try to keep up with adding all current members so that we all have a place to discuss and support the Wensleydale. If you are a member and not participating in that Discussion Group, please join as we want everyone's input and it is a great way to meet other members and exchange thoughts and ideas.

The public Facebook group is open to all (North American Wensleydale Sheep on Facebook) is a wonderful place to promote with posts to inspire and educate people about our breed.

Health and flock management is always a topic of interest. We want to encourage you to post current articles and information on topics of interest. We have just added an interesting article on inbreeding to the Discussion Group (by Signet Breeding Services) If you run across well documented and reliable information please share it with us.

Welcome to Sheryl Meacham of Gwenyth Glynn Longwools, the new NAWSA Secretary and Wendy Hanson of Shaggy Bear Farms who our new Treasurer. Thank you both for your dedication.

Thank you to Jeri Robinson for creating this draft of a business card ad for members to use. It is a simple and is easily made 'print ready'. It has the NAWSA logo with room for your information. Please contact Jeri for more information.



The NAWSA Ram catalog is a continuous project, we will add rams as you submit them. Pictures are wonderful, so if you have them to provide, please send them. There had been some discussion on doing a current ewe catalog, but work has not started on that project. GLM Registry has created an online searchable database that board members have access to, and we hope to make it available to all members soon.

NAWSA BOARD 2018

President Virginia Scholomiti

Vide President -Jeri Robinson

Secretary-Sheryl Meacham

Treasurer-Wendy Hanson

Director-Nan Fickett

Director-D'Andrea Tyree

Director-Cory Simmons

Contact us at info@wensleydalesheep.org

PUBLICITY ACROSS THE POND



The Wensleydale Longwool Sheep Breeders Association which is the UK Wensleydale Association contacted the NAWSA and asked for information to put in their newsletter. They want to keep their members updated and informed about our upgrade program. They also asked for pictures of domestic rams that have been collected. We are happy to have a good working relationship with the UK, and provided pictures from our ram catalog of 'Carlson Legacy' and Shepherds Lane 'American Ambassador' and picture of a ewe in full fleece owned by MacKenzie Graham. Here is the article as it appeared in their newsletter:

"The North American Wensleydale Sheep Association was formed in 1999. The Wensleydale breed caught the eye of a group of shepherds who became committed to idea of breeding Wensleydales here in the US. The US government does not allow importation of live sheep from the UK. Rather than give up the dream of having this wonderful breed established here in the US, shepherds realized that the only way forward was through the collection and importation of Wensleydale semen and a breed up program was born.

The NAWSA uses the blood percentage model for this breed up process. A handful of long wool sheep breeds that shared historical UK history were chosen to recognize as foundation ewes to start the long process. Registered Cotswold, Lincoln and Leicester Long wool ewes were approved for this purpose. The first generation (F1) from the insemination of these ewes with purebred registered UK Wensleydale semen produced a 50% blood offspring. We do not recognize or register any rams at this low percentage, only ewes. Typically, these offspring are not bred until over a year old, and then if inseminated again with UK semen the offspring produced (both ewe and ram) are registered at 75% blood. This process continues for a minimum of six generations until the animals are registered at 96% blood. Animals at or above 96 % blood are considered purebred North American Wensleydales.

We do allow the use of live cover with NAWSA registered rams during this breed up process, realizing that the restrictions on semen and the cost of artificial insemination can be prohibitive. Some lines have been artificially inseminated (AI'd) every generation which of course provides the closest accuracy to the blood percentage. The percentage of the sire and the dam are averaged to give the percentage of the offspring.

Since 1999 we have registered almost 2000 animals, currently we have 212 registered animals born after 2012 who are at purebred status (96% blood or higher) which does not include this year's lambs. Over the years we have used imported UK semen from 17 different rams. With the extreme restrictions in place at the moment for the collection and importation of semen we have encouraged members to collect and freeze semen from high percentage, excellent phenotypical rams who are the direct offspring of UK sires. This enables us to maintain as wide a genetic footprint as possible and continue to infuse the genetics from sires no longer available.

The NAWSA breeders are completely in love with the breed. Wensleydales compete at national levels with extreme success in the show ring. Since we have imported semen from spectacular Wensleydale sires, we are blessed with a genetic pool that contains outstanding conformation and traits that stem from the dedication and breeding of the UK Wensleydales breeders. We have found a tidal wave of appreciation for the fiber and of course an addiction for the stature and look of these great animals.

I know I speak for all of our members when I say thank you to our 'mother' association in the UK and all its dedicated breeders. Without your commitment to the breed and your help and support in allowing semen to be collected we would obviously never have been able to establish Wensleydales here in the US.

I would like to extend an open invitation to any breeders who travel across the pond to the US – please contact the NAWSA as many of our member shepherds would love to host you on their farms, share experiences and talk endlessly about our wonderful shared love for the Wensleydale."

New Members: Welcome to the NAWSA and congratulations on joining our group of registered breeders. We would encourage you to read our breed up guidelines which contain the rules of the registry so that you are familiar with how our registration process works. Find them on our website www.WensleydaleSheep.org If you have any questions at all, let us know as we are always happy to talk to newcomers to our amazing Wensleydale breed.

Please remember that the NAWSA is giving complimentary Associate memberships to any folks who have never been a member and have purchase registered animals We would like to encourage membership and participation. This complimentary membership can be upgraded to an Active member at any time during that first year, for the normal membership fee.

Hoping your flocks stay healthy and cool this summer!

FIBER FIBER FIBER

Over the next year we would like to find ways to publicize, promote and educate the fiber world about our outstanding fiber and its unique qualities. We will start by asking members to share some of the wonderful things that they are doing with our Wensleydale locks and/or how fiber artists they sell to are creating with our fiber. It is coveted by so many in the fiber world and we want to keep that trend going by sparking interest.



NAWSA
Box 147
Sellersburg, IN 47172

[Type the recipient name]

[Type the recipient address]