

QGM STANDARD ABBREVIATIONS

BL	BASELINE
BLVD.	BOULEVARD
BCC	BACK OF CURB
BSP	BACTERIAL SAMPLE POINT
CATV	CABLE TELEVISION
CB	CATCH BASIN
CL	CENTERLINE
CMP	CORRUGATED METAL PIPE
CO	CLEAN OUT
CONC.	CONCRETE
CUE	COUNTY UTILITY EASEMENT
DE	DRAINAGE EASEMENT
DIP	DUCTILE IRON PIPE
EL. OR ELEV.	ELEVATION
EOP	EDGE OF PAVEMENT
ERCP	ELLIPTICAL REINFORCED CONCRETE PIPE
EXIST.	EXISTING
FDC	FIRE DEPARTMENT CONNECTION
FDOT	FLORIDA DEPARTMENT OF TRANSPORTATION
FE	FLARED END
FEMA	FEDERAL EMERGENCY MANAGEMENT AGENCY
FFE	FINISHED FLOOR ELEVATION
F.H.	FIRE HYDRANT
FM	FORCE MAIN
FPL OR FP&L	FLORIDA POWER & LIGHT
GV	GATE VALVE
HDPE	HIGH DENSITY POLYETHYLENE
HORIZ.	HORIZONTAL
HW	HEADWALL
INC.	INCORPORATED
INV.	INVERT
IRR.	IRRIGATION
JB	JUNCTION BOX
LBR	LANDSCAPE BUFFER EASEMENT
L.F.	LINEAR FEET
LME	LAKE MAINTENANCE EASEMENT
ME	MITERED END
MH	MANHOLE
M.J.	MECHANICAL JOINT
MIN.	MINIMUM
NGVD	NATIONAL GEODETIC VERTICAL DATUM
NIC	NOT IN CONTRACT
PBSP	PERMANENT BACTERIAL SAMPLE POINT
PL	PROPERTY LINE
POT.	POTABLE
PROP.	PROPOSED
PVC	POLYVINYL CHLORIDE PIPE
PVI	POINT OF VERTICAL INTERSECTION
PVMT.	PAVEMENT
P.S.	PUMP STATION
RED.	REDUCER
RCP	REINFORCED CONCRETE PIPE
R.O.W.	RIGHT-OF-WAY
SAN.	SANITARY
SB	SOIL BORING
ST.	STREET
STA.	STATION
SWK.	SIDEWALK
SWR.	SEWER
TBSP	TEMPORARY BACTERIAL SAMPLE POINT
TEMP.	TEMPORARY
TOB	TOP OF BANK
TOS	TOE OF SLOPE
TYP.	TYPICAL
UE	UTILITY EASEMENT
VERT.	VERTICAL
VG	VALLEY GUTTER
W/	WITH
WCS	WATER CONTROL STRUCTURE
WM	WATER MAIN
YD	YARD DRAIN

LOCATION	ACRES	SQ. FT.
TOTAL AREA	1.48	86,031.69

NOTES:

1. THE WING SOUTH PROPERTY OWNERS ASSOC. OR THEIR ASSIGNS OR SUCCESSORS SHALL OWN AND MAINTAIN ALL OPEN SPACE, WATER MANAGEMENT, IRRIGATION SYSTEMS, COMMON AREAS, PRIVATE STREETS AND EASEMENTS.
2. ALL ON-SITE SANITARY SEWER AND POTABLE SYSTEMS WITHIN THE RIGHTS-OF-WAY SHALL BE OWNED AND MAINTAINED BY COLLIER COUNTY UTILITIES ALL OTHER WATER AND SEWER UTILITIES OUTSIDE OF EASEMENTS OR RIGHTS-OF-WAY SHALL BE OWNED AND MAINTAINED BY THE PROPERTY OWNERS OR THEIR ASSIGNS OR SUCCESSORS.
3. WATER AND SANITARY SEWER SERVICE IS PROVIDED BY COLLIER COUNTY UTILITIES.
4. THE REVIEW AND APPROVAL OF IMPROVEMENT PLANS DOES NOT AUTHORIZE THE CONSTRUCTION OF REQUIRED IMPROVEMENTS WHICH ARE INCONSISTENT WITH EXISTING EASEMENTS OF RECORDS.
5. ALL PROHIBITED EXOTIC VEGETATION SHALL BE REMOVED FROM THE SITE AND IT SHALL BE MAINTAINED FREE OF EXOTICS IN PERPETUITY.
6. PROJECT LIES WITHIN THE SHADOWWOOD PUD, ORD. No.'s 82-49 AND 08-43.

PRINTED

JUN 29 2009

Q. GRADY MINOR & ASSOCIATES, P.A.
CIVIL ENGINEERS-LAND SURVEYORS

LEGEND

Revision	Date	Description	By
1	03/24/09	REVISED PER COLLIER COUNTY COMMENTS	J.S.V.

DESIGNED BY:	MJD
DRAWN BY:	GS
APPROVED:	MJD
JOB CODE:	WS1
SCALE:	1" = 40'

Q. GRADY MINOR & ASSOCIATES, P.A.
CIVIL ENGINEERS ■ LAND SURVEYORS ■ PLANNERS ■ LANDSCAPE ARCHITECTS

BONITA SPRINGS (239) 947-1144 FORT MYERS (239) 690-4380 NORTH PORT (941) 426-5858

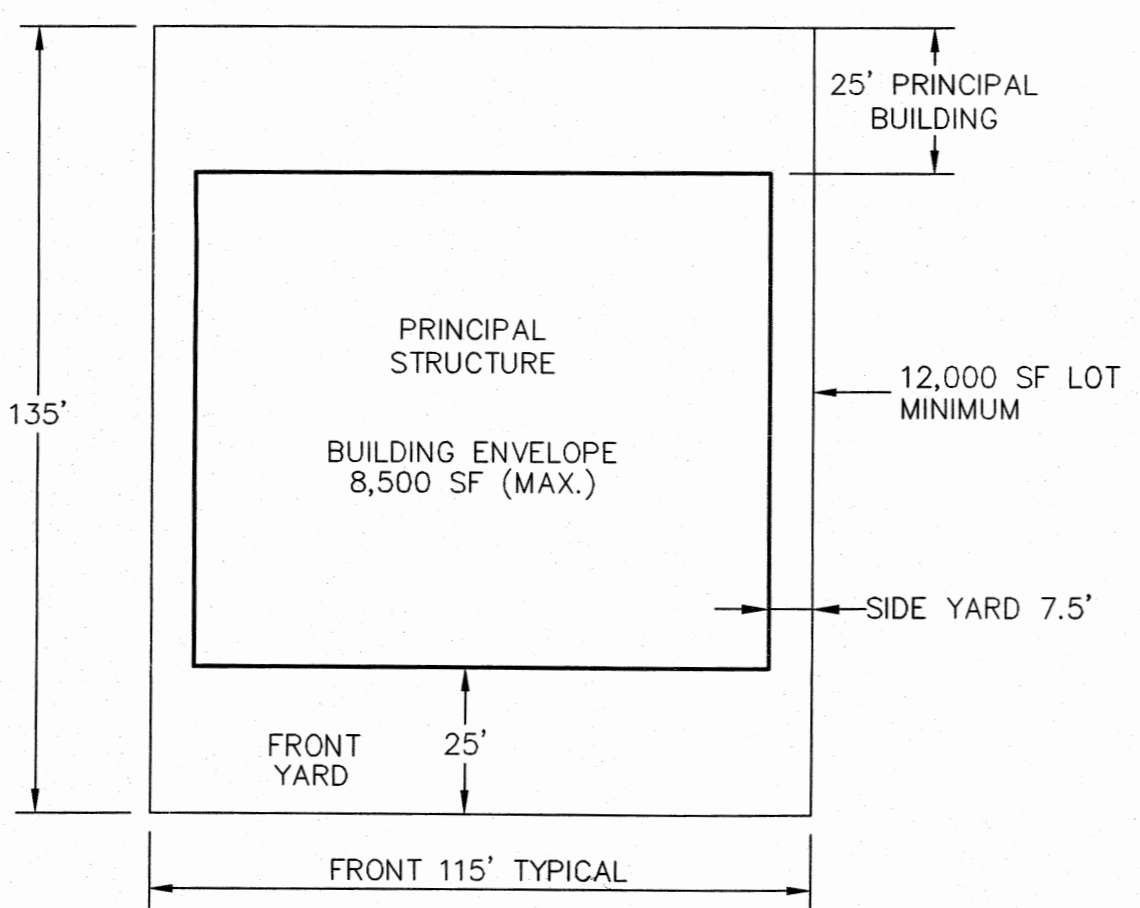
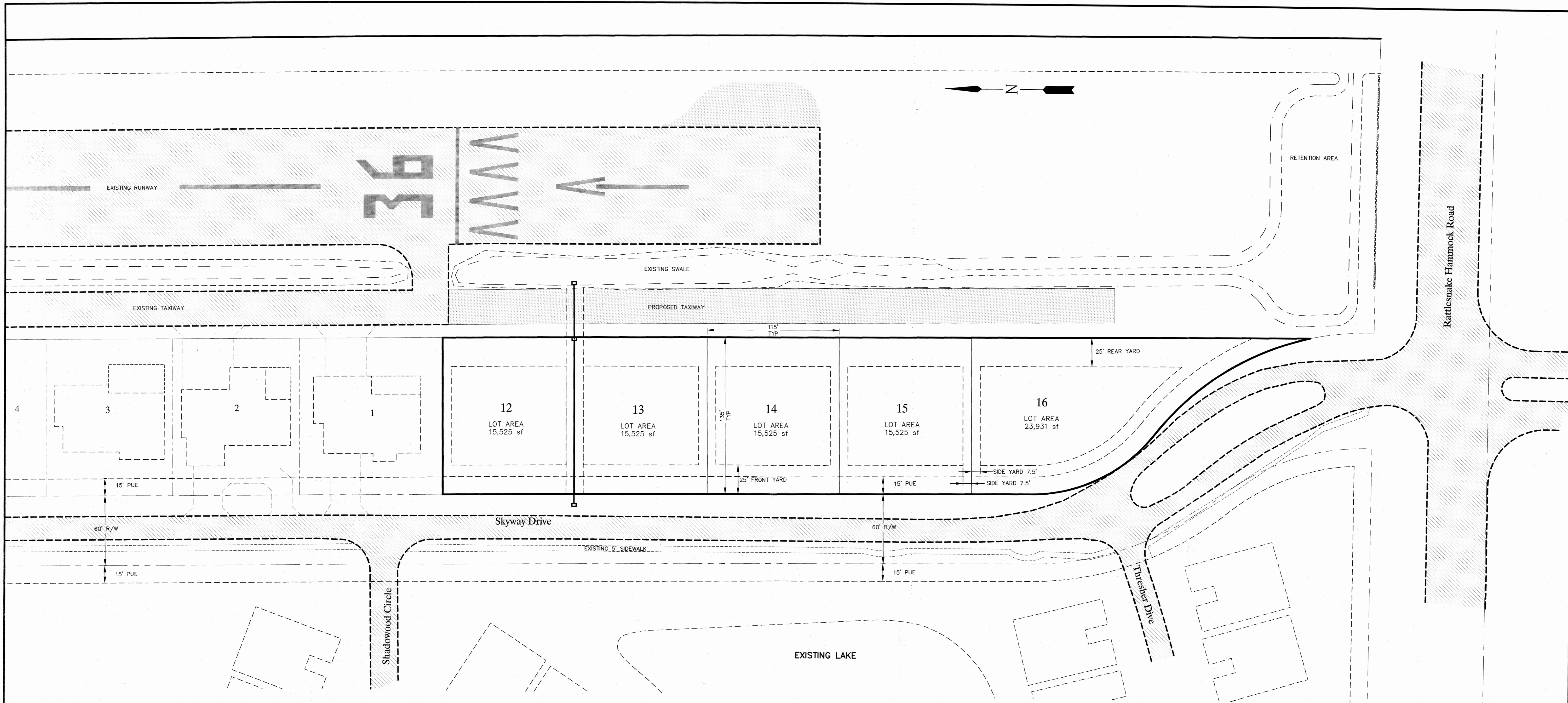
ENGINEERING CERT. OF AUTH. EB 0005151 SURVEYING CERT. OF AUTH. LB 0005151 LANDSCAPE ARCH. BUSINESS LV 26000266

WWW.GRADYMINOR.COM

Wing South Airpark Extension

Overall Site Plan and General Notes

MUNICIPALITY:	Collier County
SEC./TWNHP./RNG:	16/505/26E
DATE:	October 2008
FILE NAME:	WS SITE
MICHAEL J. DELATE, P.E. Q. GRADY MINOR & ASSOC., P.A. 3800 VIA DEL REY BONITA SPRINGS, FL 34134 FLORIDA P.E. LICENSE NO. 49442 EB/LB 0005151	SHEET 4 OF 12



*SETBACKS MEASURED TO PROPERTY LINE
TYPICAL LOT LAYOUT W/ SETBACKS

DEVELOPMENT STANDARDS		SINGLE-FAMILY, DETACHED	
PRINCIPAL STRUCTURES	REQUIRED	PROPOSED	
Minimum Lot Area	12,000 s.f.	15,525 s.f.	
Minimum Lot Width	100 feet	115 feet	
Minimum Floor Area	1,200 s.f.	1,500 s.f.	
Minimum Setbacks:			
Front	25 feet	25 feet	
Side	7.5 feet	7.5 feet	
Rear	25 feet	25 feet	
Minimum Distance Between Structures	15 feet	15 feet	
Maximum Building Height	3 Stories	2 Stories	
Maximum Actual Height	35	25	
ACCESSORY STRUCTURES			
Minimum Setbacks:	Per LDC Section 4.02.03		

All references to maximum height refer to the "zoned height" as defined in Section 1.08.02 of the Land Development Code.

PRINTED

JUN 29 2009
 Q. GRADY MINOR & ASSOCIATES, P.A.
 CIVIL ENGINEERS-LAND SURVEYORS

LEGEND	
	EXISTING PAVEMENT
	PROPOSED PAVEMENT

Revision	Date	Description	By
1	03/24/09	REVISED PER COLLIER COUNTY COMMENTS	J.S.V.

DESIGNED BY: M.J.D.
 DRAWN BY: GS
 APPROVED: M.J.D.
 JOB CODE: WS1
 SCALE: 1" = 40'

Q. GRADY MINOR & ASSOCIATES, P.A.
 CIVIL ENGINEERS ■ LAND SURVEYORS ■ PLANNERS ■ LANDSCAPE ARCHITECTS
 BONITA SPRINGS (239) 947-1144 ■ FORT MYERS (239) 690-4580 ■ NORTH PORT (941) 426-5858
 ENGINEERING CERT. OF AUTH. EB 0005151 SURVEYING CERT. OF AUTH. LB 0005151 LANDSCAPE ARCH. BUSINESS LV 26000266
 WWW.GRADYMINOR.COM

Wing South Airpark Extension

Zoning Data Sheet

MUNICIPALITY: Collier County	FILE NAME: WS SITE
SEC./TNSHP/RNG: 16/50S/26E	SHEET 5 OF 12
DATE: October 2008	
MICHAEL J. DELATE, P.E. Q. GRADY MINOR & ASSOC., P.A. 3800 VIA DEL REY BONITA SPRINGS, FL 34134 FLORIDA P.E. LICENSE NO. 49442 EB/LB 0005151	