

QUAIL CREEK COVE

Lamey Bridge Rd. - D'Iberville



3 BEDROOMS / 2 BATHS
TOWNHOMES / FLATS

Minutes from Promenade and I-110

1,103 - 1,225 sq. ft. living space

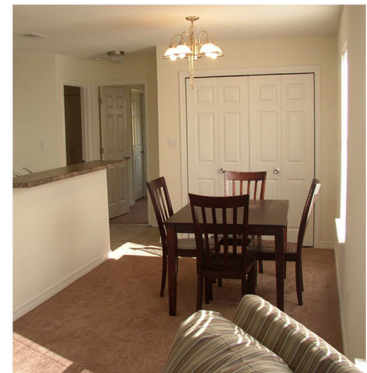
Appliances

Washer / dryer hookups

Ceiling fans

Oak finish cabinets

Community playground



 
PROPERTY MANAGEMENT • RENTALS • SALES **REAL ESTATE**

For a personal tour, call

228-806-5576

helpme@signaturegulfcoast.com