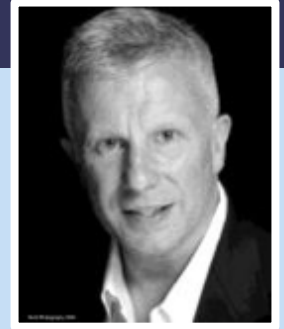


David Bradshawe



Toronto, Canada

dbradshawe@hotmail.com

www.davidbradshawe.biz

647 340 8326 | 647 894 8326

I am a highly motivated, positive and professional individual with a wealth of experience as a Cruise Director and a passion for working within the luxury market. As an excellent provider of overall direction, coordination and ongoing evaluations, I offer a strong skill set in coaching, mentoring and training others to develop the performance and output of a strong team. With an expertise in leading luxury lines, I am able to implement effective strategies to increase guest satisfaction and enhance feedback results, something which is of great importance to me on a personal level.

KEY SKILLS

- Extensive experience of working within the luxury market
- Experienced in Master of Ceremonies and event organization
- Skilled in strategic planning, budgeting and relationship management
- Proven results when delivering high end customer relation and public speaking
- Quality management and leadership skills with strong coaching and team building talents

EMPLOYMENT HISTORY

Cruise and Maritime Voyages **Cruise Director**

Aug 2017 - Dec 2017

- Centralizing guest satisfaction to my working practice at all times
- Demonstrating an effective leadership style on The Magellan and The Columbus
- Effectively liaising with iconic music groups from the 70's such as Slade, The Animals and Susie Quatro to guarantee high class entertainment for the guests onboard
- Projecting creativity through writing and directing 'A Tribute to Andrew Lloyd Webber' whilst on MV Columbus
- Taking charge of the shipboard entertainment including overseeing 'Rock the Boat' festival during my contract on The Magellan

Paul Gauguin Cruise Line **Cruise Director**

Jul 2016 - Oct 2016

- Leading and overseeing the overall entertainment onboard The Paul Gauguin, placing emphasis on the local culture

Oceania Cruise Line **Cruise Director**

Jan 2016 - Jun 2016

- Leading onboard entertainment which generated positive feedback and results
- Initiating new production teams and musicians, providing effective training to enhance integration with Oceania

Princess Cruises **Cruise Director**

Jun 2007 - Jul 2015

- Managing onboard entertainment to align with corporate strategy goals
- Demonstrating exceptional creativity, professionalism and quality of service which is ingrained in my philosophy of management
- Ensuring passengers receive a high level of service while balancing passenger satisfaction and revenue goals

Cunard Line (QM2 Start up) Jan 2002 – Mar 2005
Cruise Staff, Deputy & Cruise Director

- Taking a key role in the inaugural entertainment team
- Receiving rapid promotion to stand-in Cruise Director for Ray Rouse

Chatterbox Voice-Over Agency Mar 1982 – Nov 2003
Theatrical Agent (Part time)

- Negotiating, executing, and maintaining contracts
- Providing an exceptional level of customer service for visitors
- Serving the business in many capacities to ensure that business operations ran smoothly and efficiently
- Demonstrating effective oral and written communication by generating leads through cold call pitching and writing letters

Performing Arts Colleges Sept 1986 – 2003
Drama and Voice Coach

- Instructing a class of students at CPA in Romford
- Educating classes on voice and diction at Italia Conti in London
- Personally selected to be Director of Drama at Laine Theatre Arts
- Receiving expert mentorship from Tony Boden, founder of Performing Arts College in London

West End, National Touring and BBC Aug 1977 – Aug 2002
Professional Actor

- Working alongside distinguished actors as a member of the BBC Radio Drama Company
- Gaining experience in every aspect of theatre through acting in a multitude of roles such as Assistant Stage Manager at Northampton Repertory

BBC and The Medieval Banquet Sep 1980 – Jul 2002
Actor / Performer

- Participating in numerous TV and Radio drama productions
- Demonstrating exceptional talents in performing to international audiences

Cruise Lines Oct 1991 – May 1994
Entertainment Officer, Assistant Cruise Director, Deputy Cruise Director, Cruise Director

- Gaining recognition for creating innovative ideas as a cruise staff team member
- Receiving immense experience in the luxury market and performance entertainment
- Working onboard for P&O, Crystal Cruises, Cunard Line, Silversea, Seabourn, Thomson Cruise Lines and Princess Cruises
- Achieving promotion to Cruise Director from a Cruise Staff position within 15 months of joining inaugural team on the QM2

EDUCATION & TRAINING

LAMDA Acting Honors – Bronze, Silver and Gold
The Birmingham School of Speech Training & Dramatic Art 1978

PROJECTS

Generation X Jun 2012 - Present
Developed a modern take on a Variety Show incorporating amateur and professional entertainers

Dancing with the Stripes Aug 2009 - Present
Produced shows that incorporates high profile figures experiencing something outside their comfort zone

Breakfast with Bradshawe - The B&B Show Apr 1992 - May 1994
Initiated and implemented live morning magazine-style show incorporating music, dance, interview, and joviality

LANGUAGES

| | Spoken | Written |
|----------|---------------|----------------|
| Italian: | Basic (A1-A2) | Basic (A1-A2) |
| Tagalog: | Basic (A1-A2) | Basic (A1-A2) |

REFERENCES

References are available upon request.