

Floor Plan: Creekside 28441A

1 Bedrooms, 1.5 Bathrooms, 1188 Square Feet

Series: IV. 400 | Type: Modular or Manufactured | Sections: Double-wide

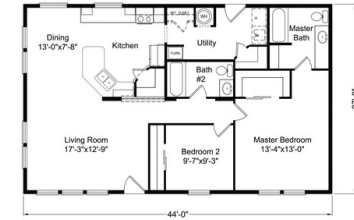
SCAN FOR
MORE DETAILS



FLOOR PLAN

LINE DRAWING COMING SOON

ADDITIONAL FLOOR PLANS



Because we have a continuous product updating and improvement process, prices, plans, dimensions, features, materials, specifications and availability are subject to change without notice or obligation. Please refer to working drawings for actual dimensions. Renderings and floor plans are artist's depictions only and may vary from the completed home. Square footage calculations and room dimensions are approximate subject to industry standards. Some features shown are optional.

*Although we work to ensure pricing online is as correct as possible, prices may change at any time and without notice or obligation. Please contact us for the most current price. Pricing may not include taxes, site preparation costs beyond the services listed or delivery outside of the certain delivery area. Nothing contained herein or on the Web Site constitutes an offer to sell any product or service, and no binding obligations will arise until you and your retail model center have executed final sales documents. Not responsible for typos.

Palm Harbor Homes, Inc.

3737 Palm Harbor Drive
Millersburg, OR 97321



A CAVCO COMPANY

palmharbor.com

Copyright © 2022 Cavco Industries, Inc. All rights reserved.