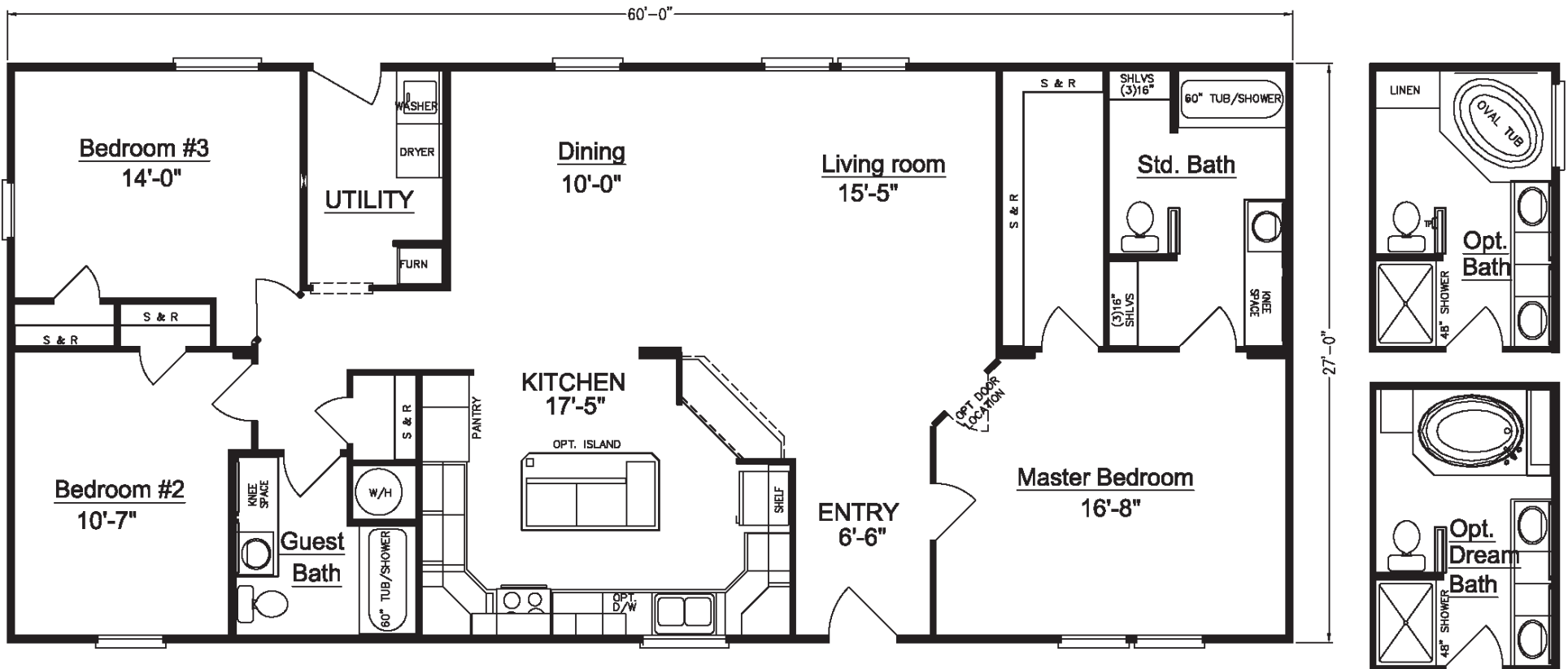




www.palmharbor.com



# Truman I



## Truman I

Model N4P360A1

4G28603A

Approx. 1620 Sq. Ft.

- 3 bedrooms, 2 baths
- Huge kitchen with conversation bar
- Optional kitchen island
- Available with front utility

option for garage access

Copyright © Palm Harbor Homes, Inc. Because Palm Harbor Homes has a continuous product updating and improvement process, prices, plans, dimensions, features, materials, specifications and availability are subject to change without notice or obligation. Please refer to working drawings for actual dimensions. Renderings and floor plans are artist's depictions only and may vary from the completed home. Square footage calculations and room dimensions are approximate subject to industry standards.