



ASTON MARTIN

RESIDENCES

— at —

300 BISCAYNE BOULEVARD WAY
MIAMI

Signature

Signature

TRUE BEAUTY HAS THE
POWER TO INSPIRE AND
ELEVATE. EVERY DAY, IT
ENRICHES OUR LIVES IN
INFINITE WAYS.



ASTON MARTIN

RESIDENCES

at

300 BISCAYNE BOULEVARD WAY
M I A M I



A FIERCELY INDEPENDENT SPIRIT
AND A RICH AND PRESTIGIOUS
HISTORY DEFINE ASTON MARTIN
AS TRULY UNIQUE IN THE LUXURY
AUTOMOTIVE WORLD.





A RICH HISTORY, AN EXCITING FUTURE

Since its foundation in 1913, Aston Martin has mastered the perfect balance of design with comfort, and luxury with functionality. Translating the simplicity and elegance of Aston Martin's unique design language, the Aston Martin Residences builds on the craftsmanship that is synonymous with the iconic British brand.

Aston Martin partnered with renowned developer G&G Business Developments to realise its first real estate venture globally. The result is a prestigious, one-of-a-kind building that represents the pinnacle of elegant living, located at 300 Biscayne Boulevard Way in Miami.

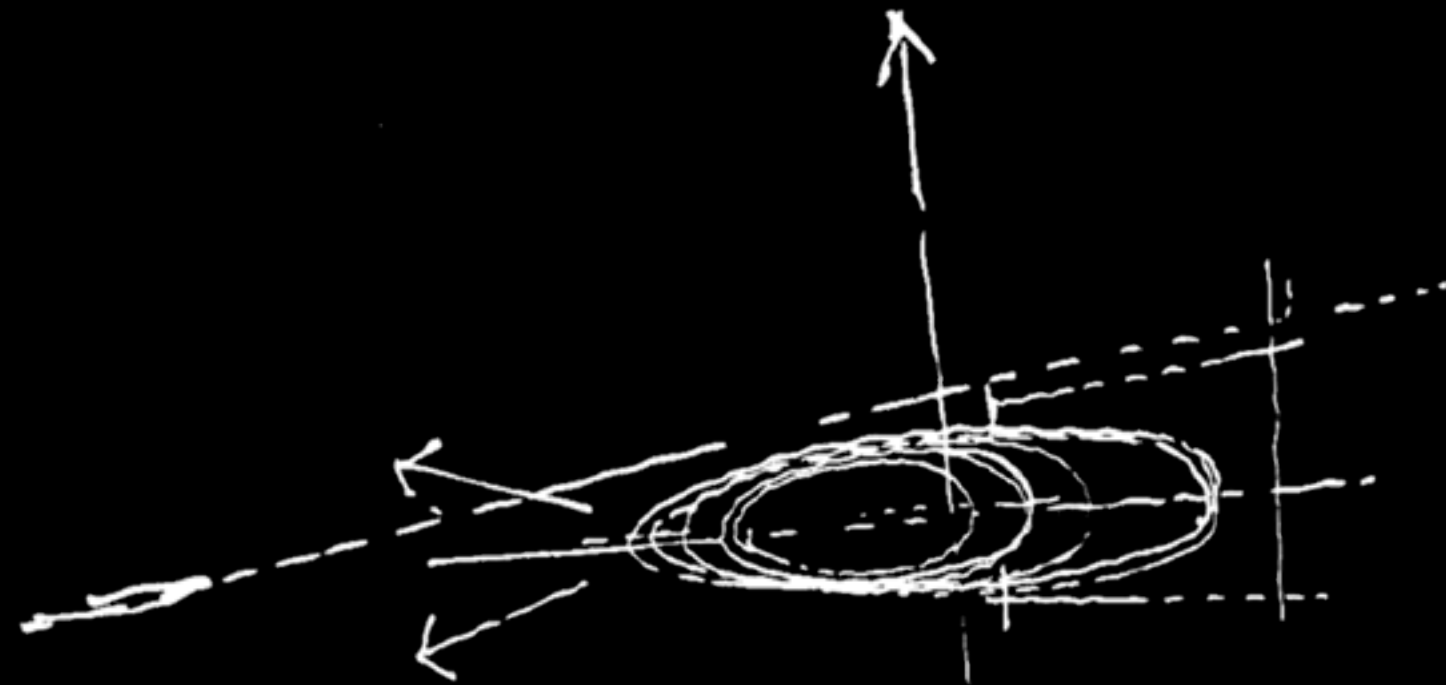


DRIVEN BY A LOVE OF BEAUTY

"Our design language is based on beauty and the honesty and authenticity of materials. It's simple and pure and has an elegance attached to beautiful proportions. We're incorporating Aston Martin's DNA through subtle details and fine craftsmanship, with an emphasis on comfort. This building is for people who appreciate the finest quality and who love the feeling of something timeless."

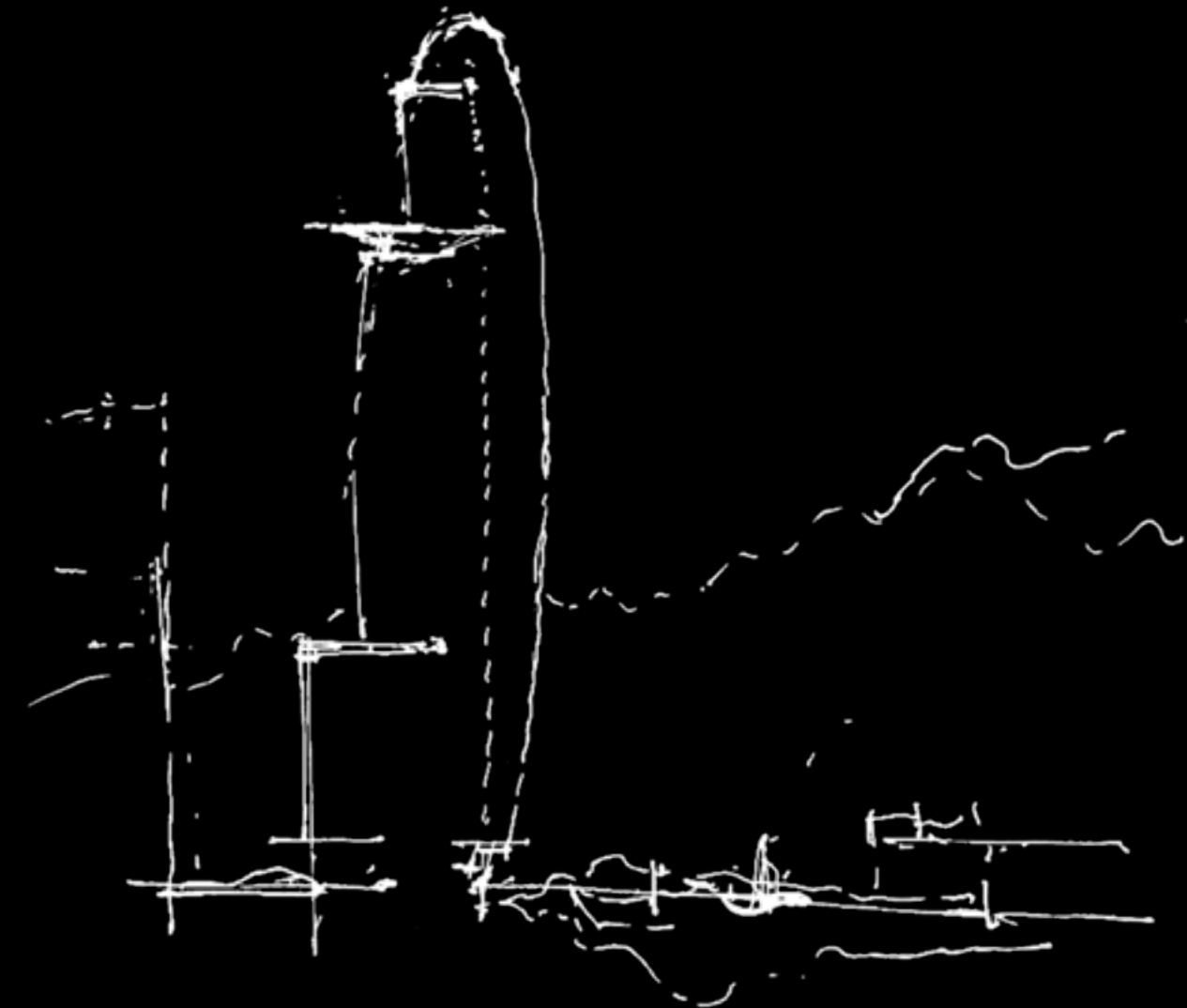
MAREK REICHMAN
EVP and Chief Creative Officer
Aston Martin

TIMELESS LINES,
EXTRAORDINARY
VISION



"Looking at the city of Miami and its powerful connection with the sea, the idea of smooth waves came instantly to our minds. The ripple of the water and the soft lines of its coastline made us wonder how to create a connection between architecture and Miami's distinct shapes. The work of carving a new niche in this city led to the creation of a luxurious residential tower that speaks in the language of the ocean, inspired by the rush of the breeze and the sail of a boat. The Aston Martin Residences at 300 Biscayne Boulevard Way achieves an exquisite encounter between sea, city and wind."

RODOLFO MIANI
BMA Architects





REDEFINING THE MIAMI SKYLINE

ARTISTIC CONCEPTUAL RENDERING

DESIGNED
FOR LIVING
BEAUTIFULLY

REACH NEW
HEIGHTS



ASTON MARTIN

RESIDENCES

at

300 BISCAYNE BOULEVARD WAY
M I A M I



ARTISTIC CONCEPTUAL RENDERING

The Aston Martin Residences at 300 Biscayne Boulevard Way melds timeless design and exacting craftsmanship with an ideal location to create Miami's most coveted address. Situated on the last parcel of waterfront land in Miami, this majestic residential building is a symphony of curvilinear glass and steel, soaring 66 storeys high.



ASTON MARTIN

RESIDENCES

at

300 BISCAYNE BOULEVARD WAY
M I A M I



ARTISTIC CONCEPTUAL RENDERING



Signature

CREATING A LANDMARK

THE ASTON MARTIN SIGNATURE
COLLECTION PENTHOUSES AND
SELECTED 01 RESIDENCES ARE
PERFECT EXPRESSIONS OF STYLE AND
ELEGANCE AND THE EPITOME OF
THE ASTON MARTIN ART OF LIVING.

The Signature Collection Residences feature
breathtaking views from floor-to-ceiling
windows, spacious floor plans and inspirational
design details.



ARTISTIC CONCEPTUAL RENDERING



Gloria Coto: Managing Director G&G / Germán Coto: CEO G&G / Sofia Coto: Owner Representative G&G

WE'RE OBSESSED WITH DESIGN, AND
OUR ETHOS IS LOVE OF BEAUTY
AND PASSION FOR EXCELLENCE. IT'S
A WAY OF LIFE THAT GUIDES EVERY
DECISION WE MAKE.

-German Coto



SIGNATURE COLLECTION

Contemporary architecture blends with art, and art blends with design seamlessly throughout the Aston Martin Residences Signature Collection. Created with passion, imagination and attention to every detail, these exceptional homes are individual masterpieces. Elegant and harmonious with uninterrupted views of an ever-changing canvas to inspire and uplift, Signature Collection is the epitome of luxury and a celebration of art in all its forms.

Signature



WHERE BEAUTIFUL
IS THE BENCHMARK





Quality, distinctiveness, timelessness and elegance. A warm welcome awaits in the luxurious lobby areas, where Aston Martin's design philosophy of perfect proportions and authentic materials is evident throughout.







A SENSE OF PLACE

Relax and unwind in a living room of perfect proportions, a sanctuary for the soul at any time of the day.

Welcome to the kitchen of your dreams, a stylish yet functional space featuring state-of-the-art Gaggenau appliances. A bespoke kitchen with quality, craftsmanship and performance at its core.





Custom-designed bathroom with swathes of cool marble and European cabinetry.



WITH A PASSION FOR PERFECTION,
THE ASTON MARTIN RESIDENCES IS THE
PLACE TO LIVE YOUR BEST LIFE. DRIVEN
BY A LOVE OF BEAUTY, ART AND
ARCHITECTURE, EVERY DETAIL HAS
BEEN CAREFULLY CONSIDERED.

BUILDING INFORMATION

- 391 Residential condominium units
- 1- to 5-bedroom Residences, Duplexes, and Penthouses
- Residences ranging from 698 SF. to 18,811 SF.
- 66 storeys

RESIDENCE FEATURES

- Premium white marble flooring throughout living areas, kitchen and bathrooms
- Expansive floor plan layouts to suit your living needs
- Floor-to-ceiling windows and sliding glass doors
- Private glass balconies finished with porcelain flooring
- Luxury kitchens with Bulthaup cabinetry and Gaggenau appliances
- Custom-designed bathrooms with European cabinetry
- Panoramic views of the Biscayne Bay, the Atlantic Ocean and the Miami skyline

RESIDENCE SIZES & CEILING HEIGHTS

- Upper Penthouse 19,868 SF.
- Sky Penthouses ranging from 8,977 to 10,463 SF.
- 5-bedrooms ranging from 3,764 to 3,994 SF.
- 4-bedrooms ranging from 3,235 to 4,434 SF.
- 3-bedrooms ranging from 2,236 to 3,075 SF.
- 2-bedrooms ranging from 1,317 to 2,143 SF.
- 1-bedroom ranging from 754 to 1,001 SF.
- Studios from 698 SF.
- 10-foot ceiling height in residences
- 12-foot ceiling height in penthouses

BUILDING SERVICES

- Full-service building
- Personal butler service
- Private superyacht marina (486 linear feet with 15-foot draft depth)
- 24-hour valet and garage self-parking option
- Electric vehicle charging stations
- Bicycle and private storage spaces
- Ten destination-controlled super high-speed ThyssenKrupp Destination Dispatch elevators (up to 1,200 feet per minute)
- Three separate dedicated service elevators
- Digital connection to concierge and all amenities from every residence
- High-speed internet and Wi-fi hotspots in all common areas
- Pet-friendly

TRIPLEX
PENTHOUSE
LEVELS 63 through 65

PENTHOUSES
LEVELS 56 through 62

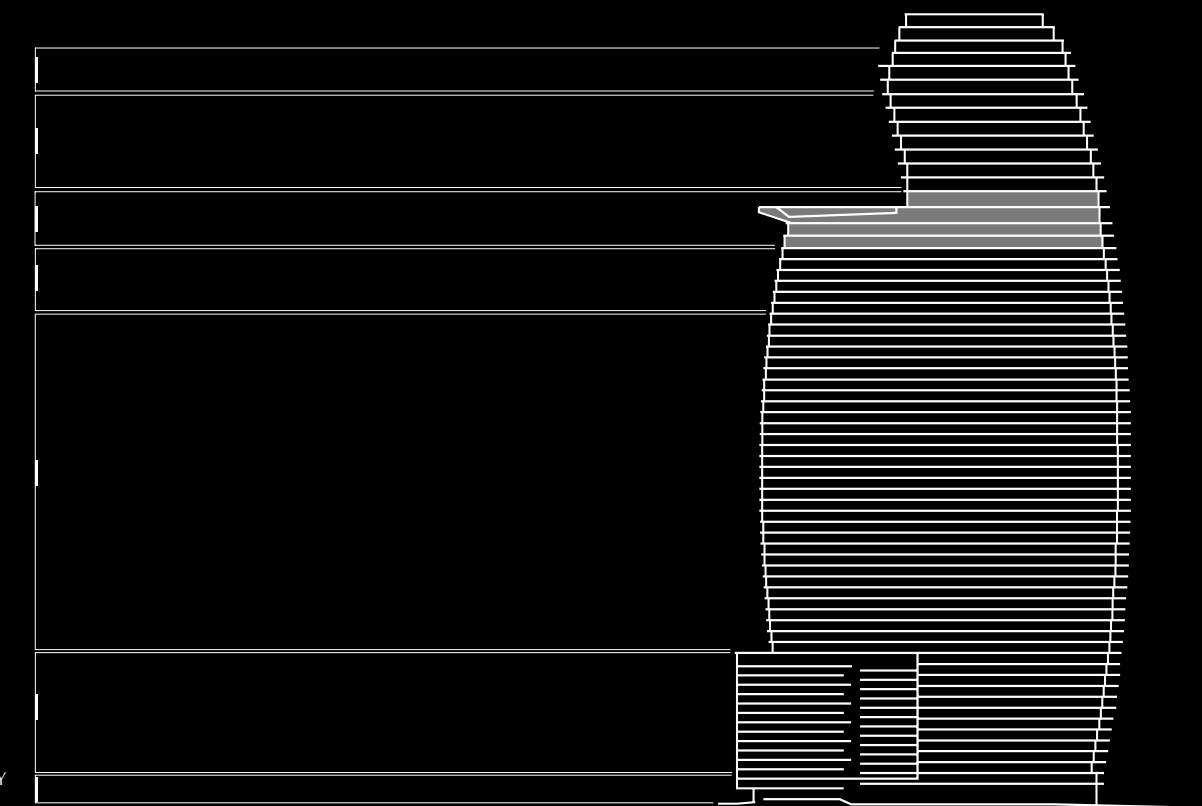
SKY AMENITIES

SKY RESIDENCES
LEVELS 46 through 51

PANORAMIC
RESIDENCES
LEVELS 15 through 45

RIVER
RESIDENCES
LEVELS 3 through 14

GROUND FLOOR LOBBY
Ground Level through 2







SKY AMENITIES: PERFECT SPACES DESIGNED TO BE LIVED AND LOVED



ASTON MARTIN

RESIDENCES

at

300 BISCAYNE BOULEVARD WAY
MIAMI



Located across four floors at the top of the majestic building, all residents will enjoy panoramic ocean views when using the 42,275 square feet of carefully considered sky amenities, including a state-of-the-art fitness centre, spa, large pool deck, salons and lounges.

SWIM ABOVE IT ALL



MASTERFULLY
DESIGNED FOR LIVING A
WORLD-CLASS LIFESTYLE



WORK OUT
IN STYLE



REVITALISE MIND,
BODY & SPIRIT





ASTON MARTIN

RESIDENCES

at

300 BISCAYNE BOULEVARD WAY
M I A M I

THE ART GALLERY



JULIAN LENNON



Empathy is the bond that unites the planet. We are all in this together, and hopefully, someday, the world will realise that. Photography is one way to share, learn, appreciate, and experience other cultures, which in turn allows us to empathise with other people's lives.

My unconventional upbringing allowed for a unique view of the world, drawing me first to expression through music, and later, filmmaking, writing and photography. As an avid traveller, I relish capturing the spirit of a locale; the way it influences a landscape, breathes through a sunset, or colours an intimate moment. This unidentifiable essence, a feeling of familiarity, elegance, and uniqueness, is the same way I view Aston Martin, with its distinctive aesthetic and precise attention to detail. My images have a quality of the familiar, the personal, which mirrors the comfort of luxury and the elegance of design that is so integral to Aston Martin. Through my photography, I aim to grant the viewer intimate access to my subjects' lives and locations and insight into my own personal journey. In a city as vibrant and diverse as Miami, I invite the Aston Martin Residences Signature Collection's owners to draw a relationship to their own lives in these images and to take part in my mission to unite us through empathy in the lives of others.

Julian Lennon

JULIAN LENNON
Artist

Julianlennon-photography.com



ARTISTIC CONCEPTUAL RENDERING



ARRIVING HOME BEAUTIFULLY

With its waterside location and direct access to the ocean, a full-service superyacht marina ensures residents can arrive home in style via land or sea. At 486 linear feet with a draft depth of 15 feet, the private marina offers berths for major vessels including yachts over 300 feet.



42,275 SQUARE FEET OF SKY AMENITIES ARRANGED OVER FOUR FLOORS

SKY AMENITIES

LEVEL 55

- Infinity Pool
- Pool Deck & Cabanas
- Sky Bar & Lounge
- Pool Concierge
- Grand Salon
- State-of-the-Art Chef's Kitchen
- Private Dining Room
- Catering Kitchen

LEVEL 54

- Fitness Centre (Upper Level)
- Virtual Golf
- Movie Theatres 1 & 2

LEVEL 53

- Fitness/Spa Lounge
- Spa Lobby/Shop
- Fitness Centre (Lower Level)
- Spinning Studio
- Boxing Gym
- Full-Service Spa including:
 - Treatment Suites
 - Steam Room & Sauna
 - Meditation Room
 - Beauty Salon
 - Barber Station

LEVEL 52

- Curated Art Gallery
- Business Centre
- Conference Room
- Kids' Playroom
- Teen Centre
- Game Room
- Vending Area



SOPHISTICATION MEETS EXCLUSIVITY: LUXURY BUTLER SERVICE

The Aston Martin Residences butler service is a modern take on the British tradition. The exclusive butler service will take the stress out of home management and offer luxury travel support and a host of other services to all Aston Martin Residences owners.





THE ASTON MARTIN RESIDENCES BEACH EXPERIENCES

Residents can enjoy the best of both worlds with direct access to golden beaches just minutes away from their luxurious downtown Miami homes.

Using the exclusive butler service, owners can call the house yacht from their residence for the short cruise along Miami's world-renowned waters to an oasis of calm at the beach.

Taking to the water offers a relaxing and unique perspective of the city and its breathtaking skyline.





PENTHOUSE SIGNATURE GARAGES

Innovation, beauty and exclusivity shape every detail of the Signature Collection at the Aston Martin Residences, and the Signature Garages follow this ethos. Imagined by the Aston Martin Design Team, the Signature Garages complement the luxurious penthouses, creating the ultimate space to showcase cherished automotive works of art. Recognising that for car enthusiasts, the perfect environment to store rare classics or limited editions is as important as the home itself inspired the design of the garages where the ambience matches the elegance of the noble pieces preserved within.

Bright and airy with a gallery feel, Aston Martin experts have meticulously specified every detail of these spotless showrooms, creating immaculate homes for treasured sports car collections.

The bespoke garages at the Aston Martin Residences feature sophisticated lighting, high-quality flooring and refined wall surfaces. And each custom-designed space boasts a high-tech ventilation system and automated temperature and humidity controls to ensure every car remains in pristine condition, awaiting the owner's next automotive adventure. Stylish and beautiful, the Signature Garages complete the Aston Martin art of living, taking the joy of sports car ownership to the next level.



ENHANCE THE PLEASURE OF LIVING IN THE ASTON MARTIN RESIDENCES SIGNATURE COLLECTION

MIAMI RIVERWALK LIMITED EDITION

One remarkable element will ensure that Aston Martin Residences at 300 Biscayne Boulevard Way are the ultimate expression of a bespoke, cosmopolitan lifestyle. A special Miami Riverwalk Limited Edition DB11 V8 Coupe or DBX will be commissioned as the perfect complement for Penthouses and Selected 01 Residences. Custom elements such as crafted interiors, luxe materials and finishes, as well as other unique features, will be purpose-designed into one remarkable motorcar. Limited to just 47 vehicles, those privileged to own one will possess a rare, iconic piece of history.



ASTON MARTIN

RESIDENCES

at

300 BISCAYNE BOULEVARD WAY
MIAMI



EXPERIENCE THE PERFECT
PROPORTIONS, THE POWER
AND ELEGANCE OF
ASTON MARTIN'S MODERN
CLASSIC, THE DB11 V8 COUPE



UNLEASH YOUR SPIRIT
OF ADVENTURE WITH A
BEAUTIFUL DBX, DESIGNED
TO TAKE YOU ANYWHERE



A PRESTIGIOUS ADDRESS IN AN UNPARALLELED LOCATION

- 01 Brickell City Centre
- 02 Brickell Key
- 03 Brickell
- 04 Key Biscayne
- 05 Miami Central Station
- 06 Island Gardens Mega Yacht Marina
- 07 Helicopter/Seaplane Airport
- 08 Port of Miami
- 09 American Airlines Arena
- 10 Adrienne Arsht Center for the Performing Arts
- 11 Perez Art Museum Miami (PAMM)
- 12 Patricia and Philip Frost Museum of Science
- 13 Museum Park
- 14 Bayfront Park
- 15 Freedom Tower
- 16 Olympia Theater
- 17 Miami Dade College
- 18 Airport
- 19 Children's Museum
- 20 Fisher Island
- 21 Downtown Miami
- 22 Midtown
- 23 Design District
- 24 South Beach
- 25 Miami Beach
- 26 Zuma Restaurant


ASTON MARTIN
 RESIDENCES
 at
 300 BISCAYNE BOULEVARD WAY
 MIAMI

05'
CORAL GABLES

15'
KEY BISCAYNE

20'
MIAMI BEACH





ASTON MARTIN


RESIDENCES

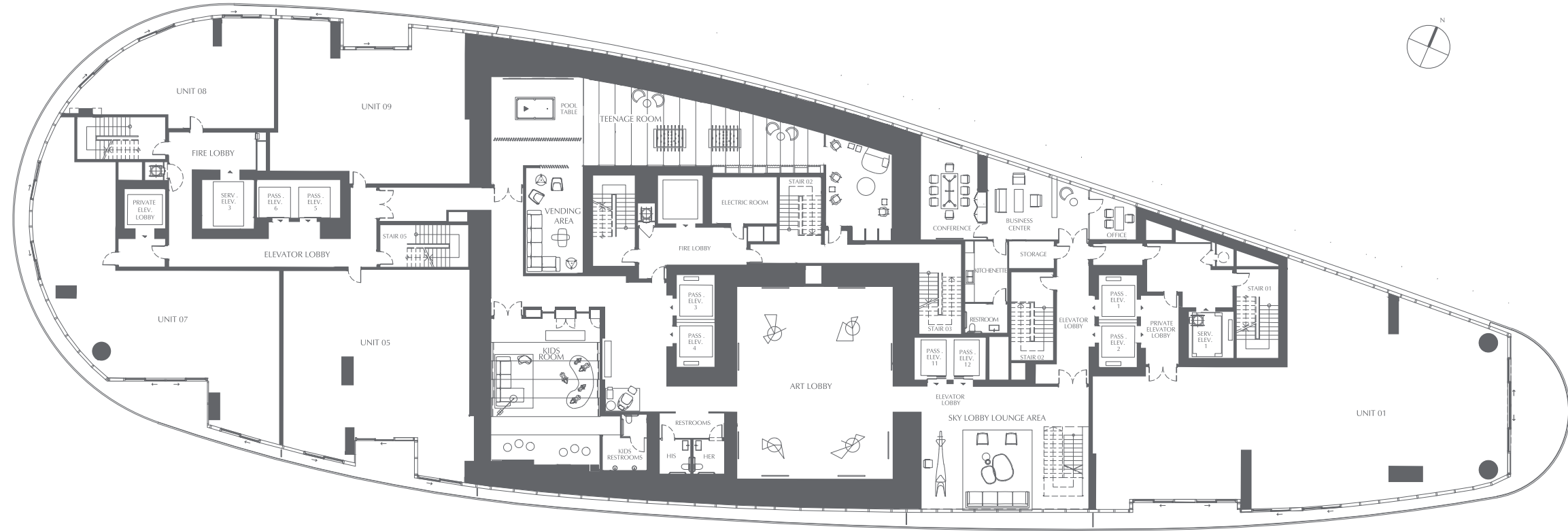
at

300 BISCAYNE BOULEVARD WAY
M I A M I

FLOORPLANS

Keyplan
Sky Amenities
 Level 52


ASTON MARTIN
 RESIDENCES
 at
 300 BISCAYNE BOULEVARD WAY
 M I A M I

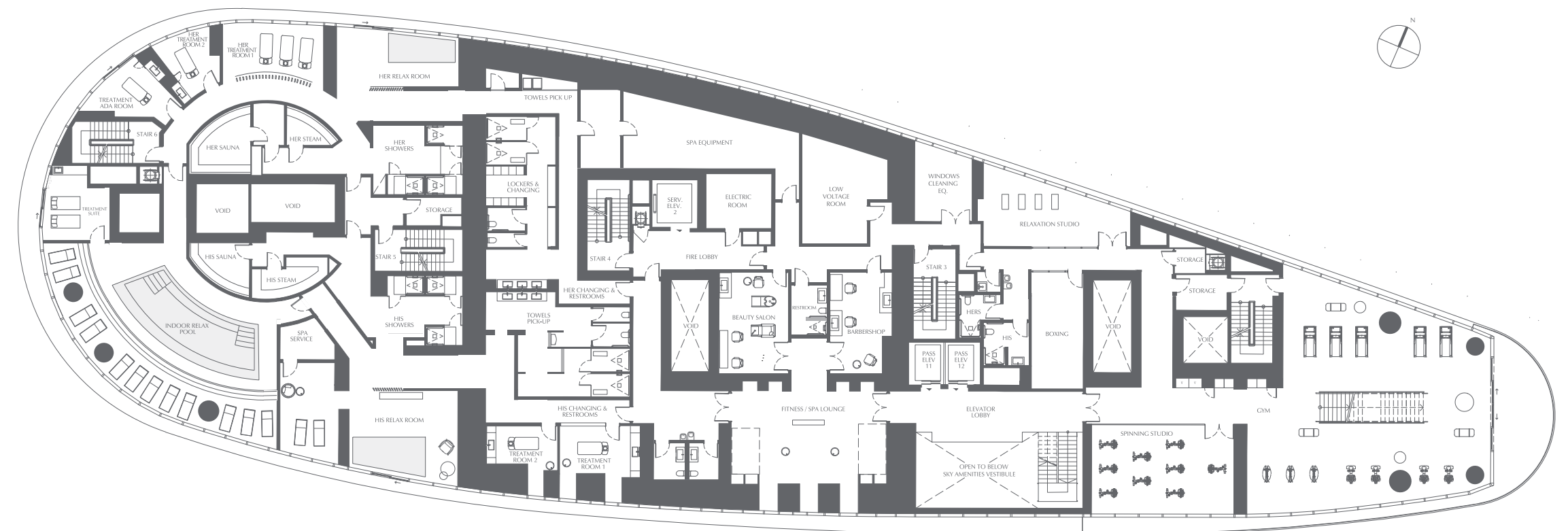


MIAMI RIVER




Keyplan
Sky Amenities
 Level 53



ASTON MARTIN
 RESIDENCES
 at
 300 BISCAYNE BOULEVARD WAY
 M I A M I



MIAMI RIVER

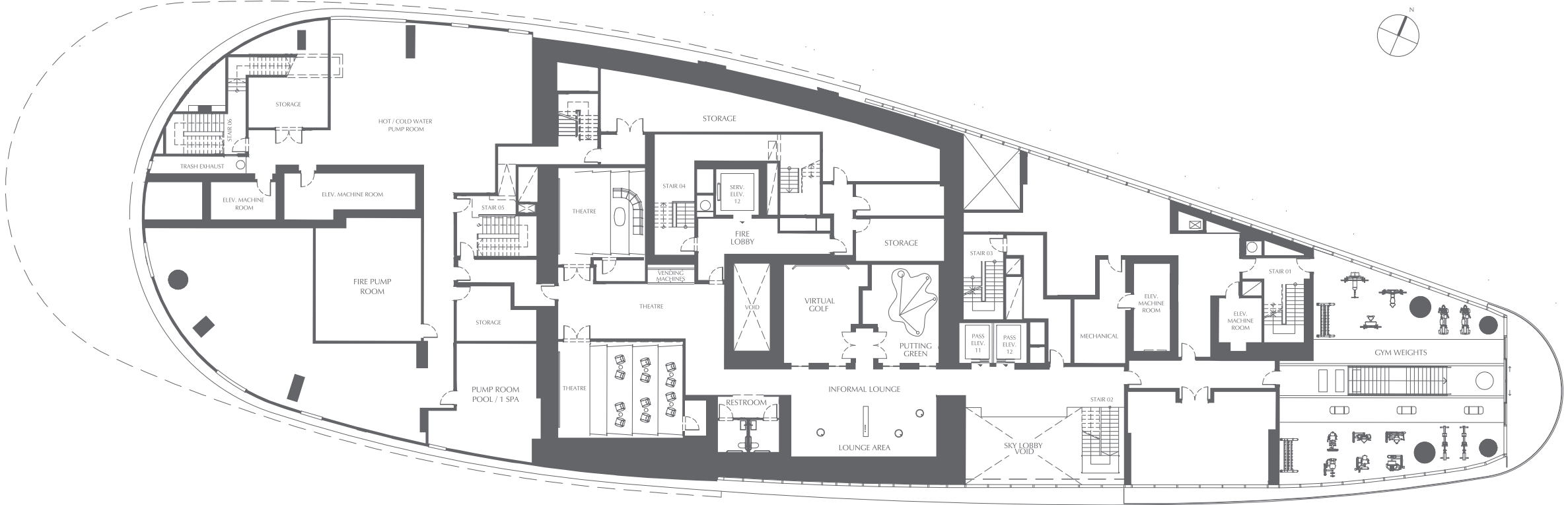


 ALL PLANS, FEATURES AND AMENITIES DEPICTED HEREIN ARE BASED UPON PRELIMINARY DEVELOPMENT PLANS, AND ARE SUBJECT TO CHANGE WITHOUT NOTICE IN THE MANNER PROVIDED IN THE OFFERING DOCUMENTS. NO GUARANTEES OR REPRESENTATIONS WHATSOEVER ARE MADE THAT ANY PLANS, FEATURES, AMENITIES OR FACILITIES WILL BE PROVIDED OR, IF PROVIDED, WILL BE OF THE SAME TYPE, SIZE, LOCATION OR NATURE AS DEPICTED OR DESCRIBED HEREIN. THE SKETCHES, RENDERINGS, GRAPHIC MATERIALS, PLANS, SPECIFICATIONS, TERMS, CONDITIONS AND STATEMENTS CONTAINED IN THIS BROCHURE ARE PROPOSED ONLY, AND THE DEVELOPER RESERVES THE RIGHT TO MODIFY, REVISE OR WITHDRAW ANY OR ALL OF THE SAME IN ITS SOLE DISCRETION AND WITHOUT PRIOR NOTICE. ALL IMPROVEMENTS, DESIGNS AND CONSTRUCTION ARE SUBJECT TO FIRST OBTAINING THE APPROPRIATE FEDERAL, STATE AND LOCAL PERMITS AND APPROVALS FOR SAME. THESE DRAWINGS AND DEPICTIONS ARE CONCEPTUAL ONLY AND ARE FOR THE CONVENIENCE OF REFERENCE. THEY SHOULD NOT BE RELIED UPON AS REPRESENTATIONS, EXPRESS OR IMPLIED, OF THE FINAL DETAIL OF THE RESIDENCES. THE DEVELOPER EXPRESSLY RESERVES THE RIGHT TO MAKE MODIFICATIONS, REVISIONS AND CHANGES IT DEEMS DESIRABLE IN ITS SOLE AND ABSOLUTE DISCRETION.

 ALL PLANS, FEATURES AND AMENITIES DEPICTED HEREIN ARE BASED UPON PRELIMINARY DEVELOPMENT PLANS, AND ARE SUBJECT TO CHANGE WITHOUT NOTICE IN THE MANNER PROVIDED IN THE OFFERING DOCUMENTS. NO GUARANTEES OR REPRESENTATIONS WHATSOEVER ARE MADE THAT ANY PLANS, FEATURES, AMENITIES OR FACILITIES WILL BE PROVIDED OR, IF PROVIDED, WILL BE OF THE SAME TYPE, SIZE, LOCATION OR NATURE AS DEPICTED OR DESCRIBED HEREIN. THE SKETCHES, RENDERINGS, GRAPHIC MATERIALS, PLANS, SPECIFICATIONS, TERMS, CONDITIONS AND STATEMENTS CONTAINED IN THIS BROCHURE ARE PROPOSED ONLY, AND THE DEVELOPER RESERVES THE RIGHT TO MODIFY, REVISE OR WITHDRAW ANY OR ALL OF THE SAME IN ITS SOLE DISCRETION AND WITHOUT PRIOR NOTICE. ALL IMPROVEMENTS, DESIGNS AND CONSTRUCTION ARE SUBJECT TO FIRST OBTAINING THE APPROPRIATE FEDERAL, STATE AND LOCAL PERMITS AND APPROVALS FOR SAME. THESE DRAWINGS AND DEPICTIONS ARE CONCEPTUAL ONLY AND ARE FOR THE CONVENIENCE OF REFERENCE. THEY SHOULD NOT BE RELIED UPON AS REPRESENTATIONS, EXPRESS OR IMPLIED, OF THE FINAL DETAIL OF THE RESIDENCES. THE DEVELOPER EXPRESSLY RESERVES THE RIGHT TO MAKE MODIFICATIONS, REVISIONS AND CHANGES IT DEEMS DESIRABLE IN ITS SOLE AND ABSOLUTE DISCRETION.

Keyplan
Sky Amenities
 Level 54


ASTON MARTIN
 RESIDENCES
 at
 300 BISCAYNE BOULEVARD WAY
 MIAMI

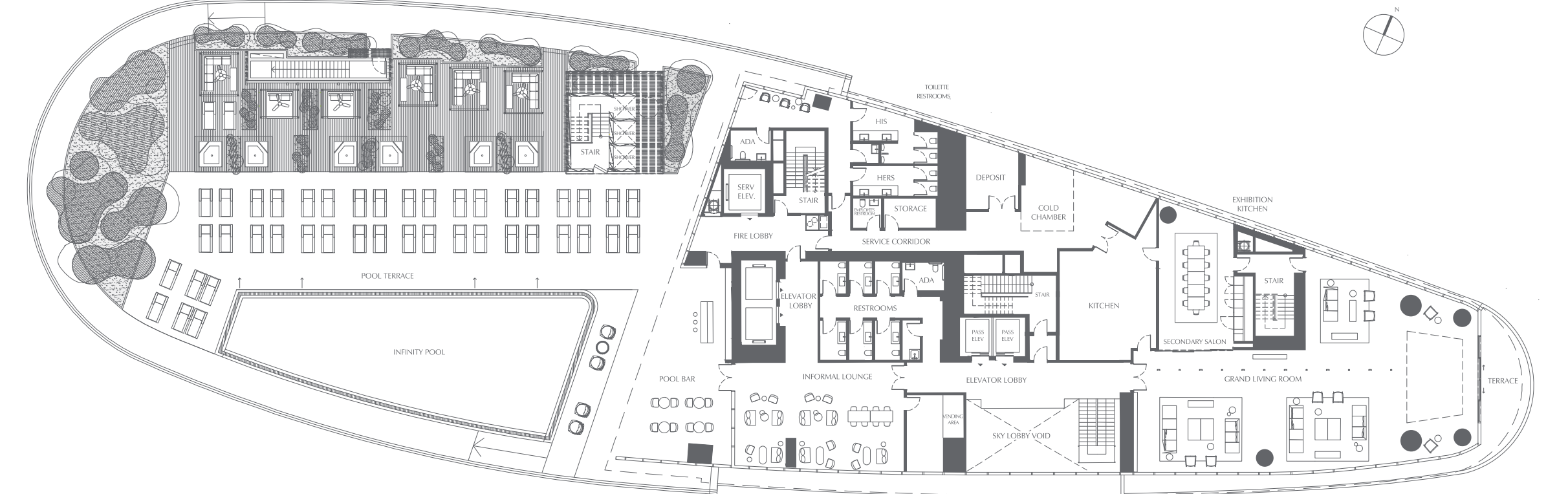


MIAMI RIVER




Keyplan
Sky Amenities
 Level 55



ASTON MARTIN
 RESIDENCES
 at
 300 BISCAYNE BOULEVARD WAY
 MIAMI



MIAMI RIVER



 ALL PLANS, FEATURES AND AMENITIES DEPICTED HEREIN ARE BASED UPON PRELIMINARY DEVELOPMENT PLANS, AND ARE SUBJECT TO CHANGE WITHOUT NOTICE IN THE MANNER PROVIDED IN THE OFFERING DOCUMENTS. NO GUARANTEES OR REPRESENTATIONS WHATSOEVER ARE MADE THAT ANY PLANS, FEATURES, AMENITIES OR FACILITIES WILL BE PROVIDED OR, IF PROVIDED, WILL BE OF THE SAME TYPE, SIZE, LOCATION OR NATURE AS DEPICTED OR DESCRIBED HEREIN. THE SKETCHES, RENDERINGS, GRAPHIC MATERIALS, PLANS, SPECIFICATIONS, TERMS, CONDITIONS AND STATEMENTS CONTAINED IN THIS BROCHURE ARE PROPOSED ONLY, AND THE DEVELOPER RESERVES THE RIGHT TO MODIFY, REVISE OR WITHDRAW ANY OR ALL OF THE SAME IN ITS SOLE DISCRETION AND WITHOUT PRIOR NOTICE. ALL IMPROVEMENTS, DESIGNS AND CONSTRUCTION ARE SUBJECT TO FIRST OBTAINING THE APPROPRIATE FEDERAL, STATE AND LOCAL PERMITS AND APPROVALS FOR SAME. THESE DRAWINGS AND DEPICTIONS ARE CONCEPTUAL ONLY AND ARE FOR THE CONVENIENCE OF REFERENCE. THEY SHOULD NOT BE RELIED UPON AS REPRESENTATIONS, EXPRESS OR IMPLIED, OF THE FINAL DETAIL OF THE RESIDENCES. THE DEVELOPER EXPRESSLY RESERVES THE RIGHT TO MAKE MODIFICATIONS, REVISIONS AND CHANGES IT DEEMS DESIRABLE IN ITS SOLE AND ABSOLUTE DISCRETION.

 ALL PLANS, FEATURES AND AMENITIES DEPICTED HEREIN ARE BASED UPON PRELIMINARY DEVELOPMENT PLANS, AND ARE SUBJECT TO CHANGE WITHOUT NOTICE IN THE MANNER PROVIDED IN THE OFFERING DOCUMENTS. NO GUARANTEES OR REPRESENTATIONS WHATSOEVER ARE MADE THAT ANY PLANS, FEATURES, AMENITIES OR FACILITIES WILL BE PROVIDED OR, IF PROVIDED, WILL BE OF THE SAME TYPE, SIZE, LOCATION OR NATURE AS DEPICTED OR DESCRIBED HEREIN. THE SKETCHES, RENDERINGS, GRAPHIC MATERIALS, PLANS, SPECIFICATIONS, TERMS, CONDITIONS AND STATEMENTS CONTAINED IN THIS BROCHURE ARE PROPOSED ONLY, AND THE DEVELOPER RESERVES THE RIGHT TO MODIFY, REVISE OR WITHDRAW ANY OR ALL OF THE SAME IN ITS SOLE DISCRETION AND WITHOUT PRIOR NOTICE. ALL IMPROVEMENTS, DESIGNS AND CONSTRUCTION ARE SUBJECT TO FIRST OBTAINING THE APPROPRIATE FEDERAL, STATE AND LOCAL PERMITS AND APPROVALS FOR SAME. THESE DRAWINGS AND DEPICTIONS ARE CONCEPTUAL ONLY AND ARE FOR THE CONVENIENCE OF REFERENCE. THEY SHOULD NOT BE RELIED UPON AS REPRESENTATIONS, EXPRESS OR IMPLIED, OF THE FINAL DETAIL OF THE RESIDENCES. THE DEVELOPER EXPRESSLY RESERVES THE RIGHT TO MAKE MODIFICATIONS, REVISIONS AND CHANGES IT DEEMS DESIRABLE IN ITS SOLE AND ABSOLUTE DISCRETION.



ASTON MARTIN

RESIDENCES

at

300 BISCAYNE BOULEVARD WAY
MIAMI

PENTHOUSES

PENTHOUSE
PENTHOUSE 01
 LEVEL 56

4 BEDROOMS
 5 BATHROOMS
 3 POWDER + STAFF + FAMILY
 POOL + GYM

INTERIOR: 10,190 SQ. FT. 947 SQ. M.
 EXTERIOR: 2,823 SQ. FT. 262 SQ. M.
 TOTAL: 13,013 SQ. FT. 1,209 SQ. M.

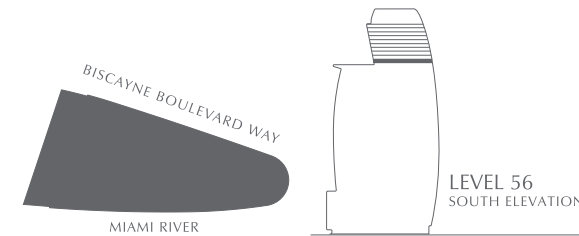
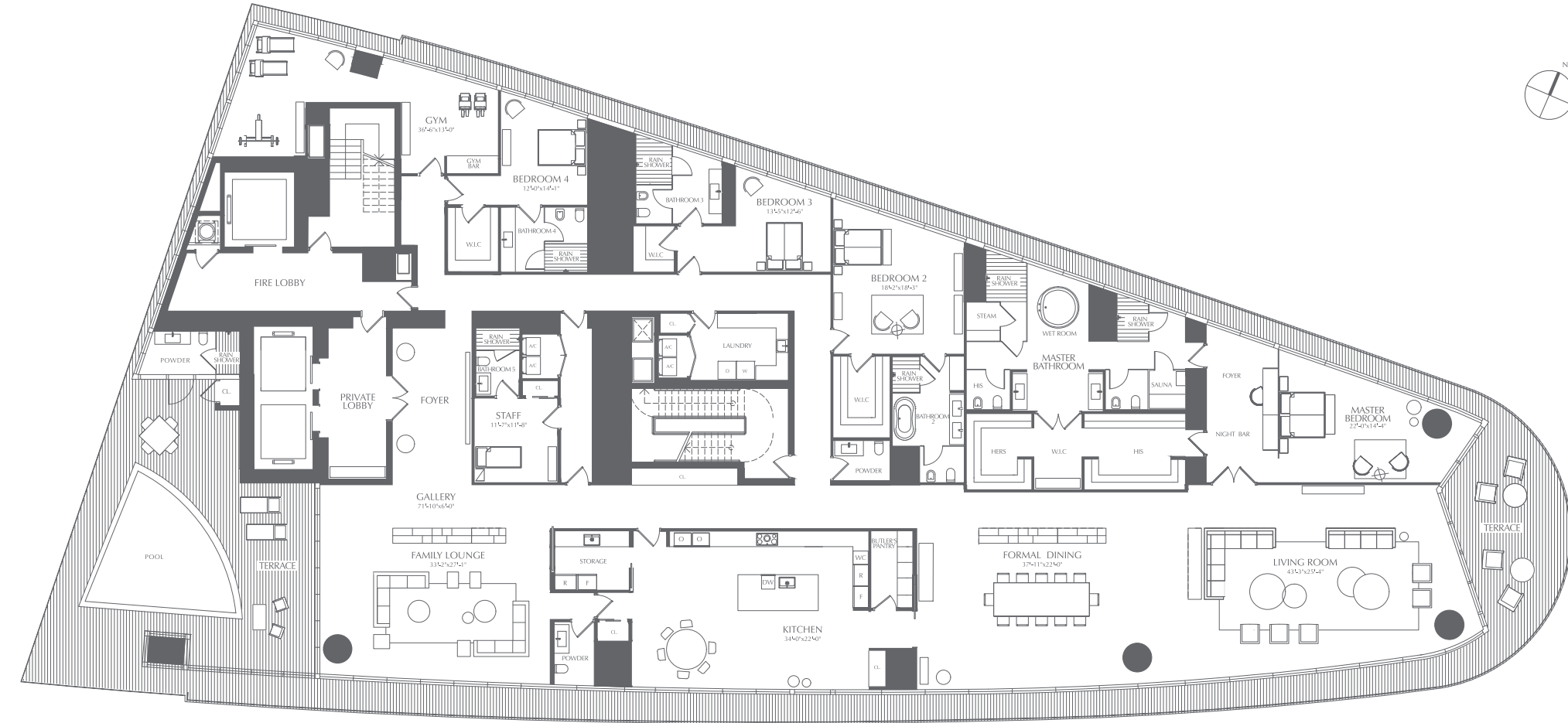


ASTON MARTIN

RESIDENCES

at

300 BISCAYNE BOULEVARD WAY
 M I A M I



PENTHOUSE
PENTHOUSE 02
 LEVEL 57

4 BEDROOMS
 5 BATHROOMS
 3 POWDER + STAFF + FAMILY
 POOL + GYM

INTERIOR: 9,958 SQ. FT. 925 SQ. M.
 EXTERIOR: 3,077 SQ. FT. 286 SQ. M.
 TOTAL: 13,035 SQ. FT. 1,211 SQ. M.

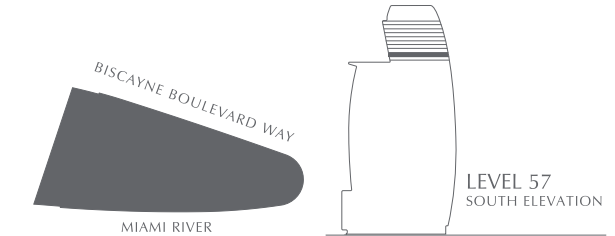
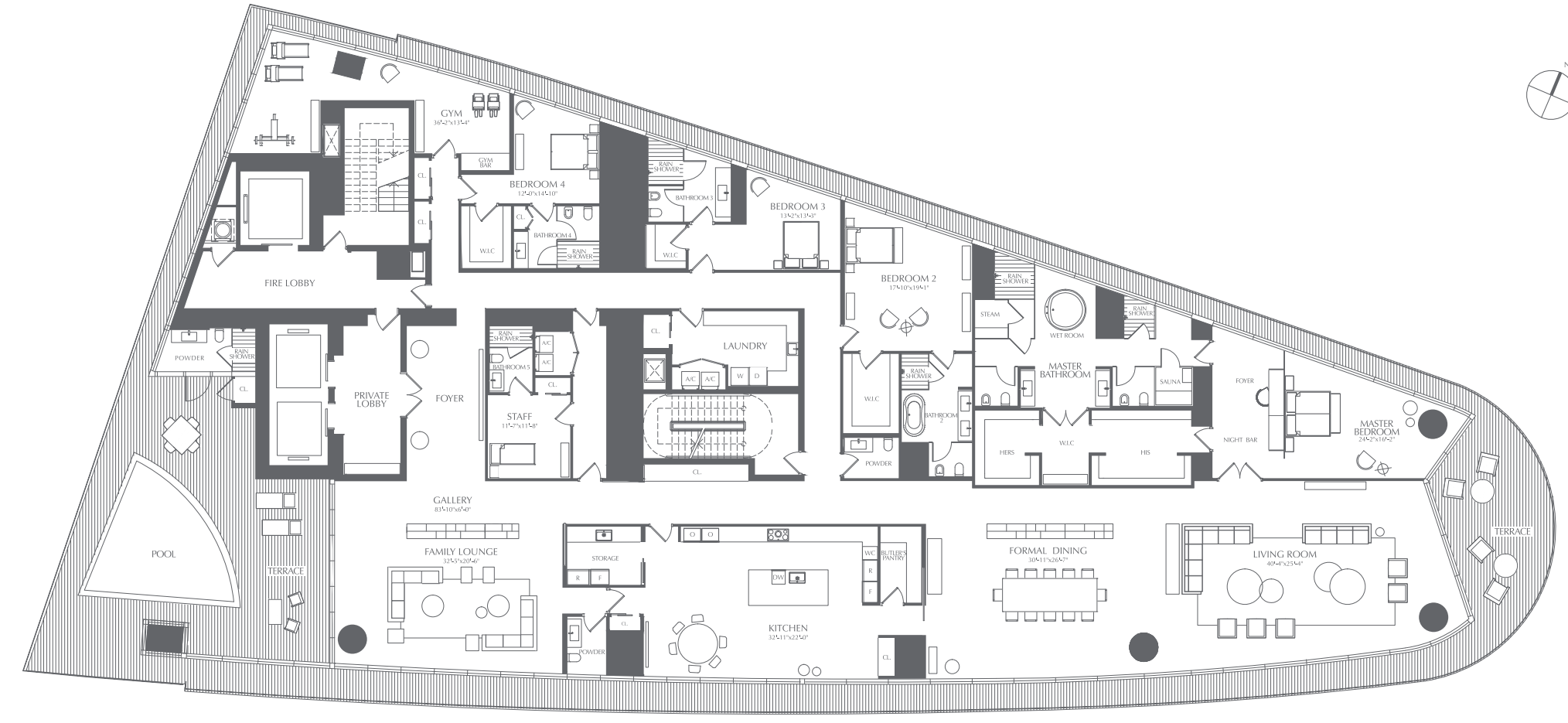


ASTON MARTIN

RESIDENCES

at

300 BISCAYNE BOULEVARD WAY
 M I A M I



ALL PLANS, FEATURES AND AMENITIES DEPICTED HEREIN ARE BASED UPON PRELIMINARY DEVELOPMENT PLANS, AND ARE SUBJECT TO CHANGE WITHOUT NOTICE IN THE MANNER PROVIDED IN THE OFFERING DOCUMENTS. NO GUARANTEES OR REPRESENTATIONS WHATSOEVER ARE MADE THAT ANY PLANS, FEATURES, AMENITIES OR FACILITIES WILL BE PROVIDED OR, IF PROVIDED, WILL BE OF THE SAME TYPE, SIZE, LOCATION OR NATURE AS DEPICTED OR DESCRIBED HEREIN. THE SKETCHES, RENDERINGS, GRAPHIC MATERIALS, PLANS, SPECIFICATIONS, TERMS, CONDITIONS AND STATEMENTS CONTAINED IN THIS BROCHURE ARE PROPOSED ONLY, AND THE DEVELOPER RESERVES THE RIGHT TO MODIFY, REVISE OR WITHDRAW ANY OR ALL OF THE SAME IN ITS SOLE DISCRETION AND WITHOUT PRIOR NOTICE. ALL IMPROVEMENTS, DESIGNS AND CONSTRUCTION ARE SUBJECT TO FIRST OBTAINING THE APPROPRIATE FEDERAL, STATE AND LOCAL PERMITS AND APPROVALS FOR SAME. THESE DRAWINGS AND DEPICTIONS ARE CONCEPTUAL ONLY AND ARE FOR THE CONVENIENCE OF REFERENCE. THEY SHOULD NOT BE RELIED UPON AS REPRESENTATIONS, EXPRESS OR IMPLIED, OF THE FINAL DETAIL OF THE RESIDENCES. THE DEVELOPER EXPRESSLY RESERVES THE RIGHT TO MAKE MODIFICATIONS, REVISIONS AND CHANGES IT DEEMS DESIRABLE IN ITS SOLE AND ABSOLUTE DISCRETION.

ALL PLANS, FEATURES AND AMENITIES DEPICTED HEREIN ARE BASED UPON PRELIMINARY DEVELOPMENT PLANS, AND ARE SUBJECT TO CHANGE WITHOUT NOTICE IN THE MANNER PROVIDED IN THE OFFERING DOCUMENTS. NO GUARANTEES OR REPRESENTATIONS WHATSOEVER ARE MADE THAT ANY PLANS, FEATURES, AMENITIES OR FACILITIES WILL BE PROVIDED OR, IF PROVIDED, WILL BE OF THE SAME TYPE, SIZE, LOCATION OR NATURE AS DEPICTED OR DESCRIBED HEREIN. THE SKETCHES, RENDERINGS, GRAPHIC MATERIALS, PLANS, SPECIFICATIONS, TERMS, CONDITIONS AND STATEMENTS CONTAINED IN THIS BROCHURE ARE PROPOSED ONLY, AND THE DEVELOPER RESERVES THE RIGHT TO MODIFY, REVISE OR WITHDRAW ANY OR ALL OF THE SAME IN ITS SOLE DISCRETION AND WITHOUT PRIOR NOTICE. ALL IMPROVEMENTS, DESIGNS AND CONSTRUCTION ARE SUBJECT TO FIRST OBTAINING THE APPROPRIATE FEDERAL, STATE AND LOCAL PERMITS AND APPROVALS FOR SAME. THESE DRAWINGS AND DEPICTIONS ARE CONCEPTUAL ONLY AND ARE FOR THE CONVENIENCE OF REFERENCE. THEY SHOULD NOT BE RELIED UPON AS REPRESENTATIONS, EXPRESS OR IMPLIED, OF THE FINAL DETAIL OF THE RESIDENCES. THE DEVELOPER EXPRESSLY RESERVES THE RIGHT TO MAKE MODIFICATIONS, REVISIONS AND CHANGES IT DEEMS DESIRABLE IN ITS SOLE AND ABSOLUTE DISCRETION.

PENTHOUSE
PENTHOUSE 04
 LEVEL 59

4 BEDROOMS
 5 BATHROOMS
 3 POWDER + STAFF + FAMILY
 POOL + GYM

INTERIOR: 9,573 SQ. FT. 889 SQ. M.
 EXTERIOR: 3,270 SQ. FT. 304 SQ. M.
 TOTAL: 12,843 SQ. FT. 1,193 SQ. M.

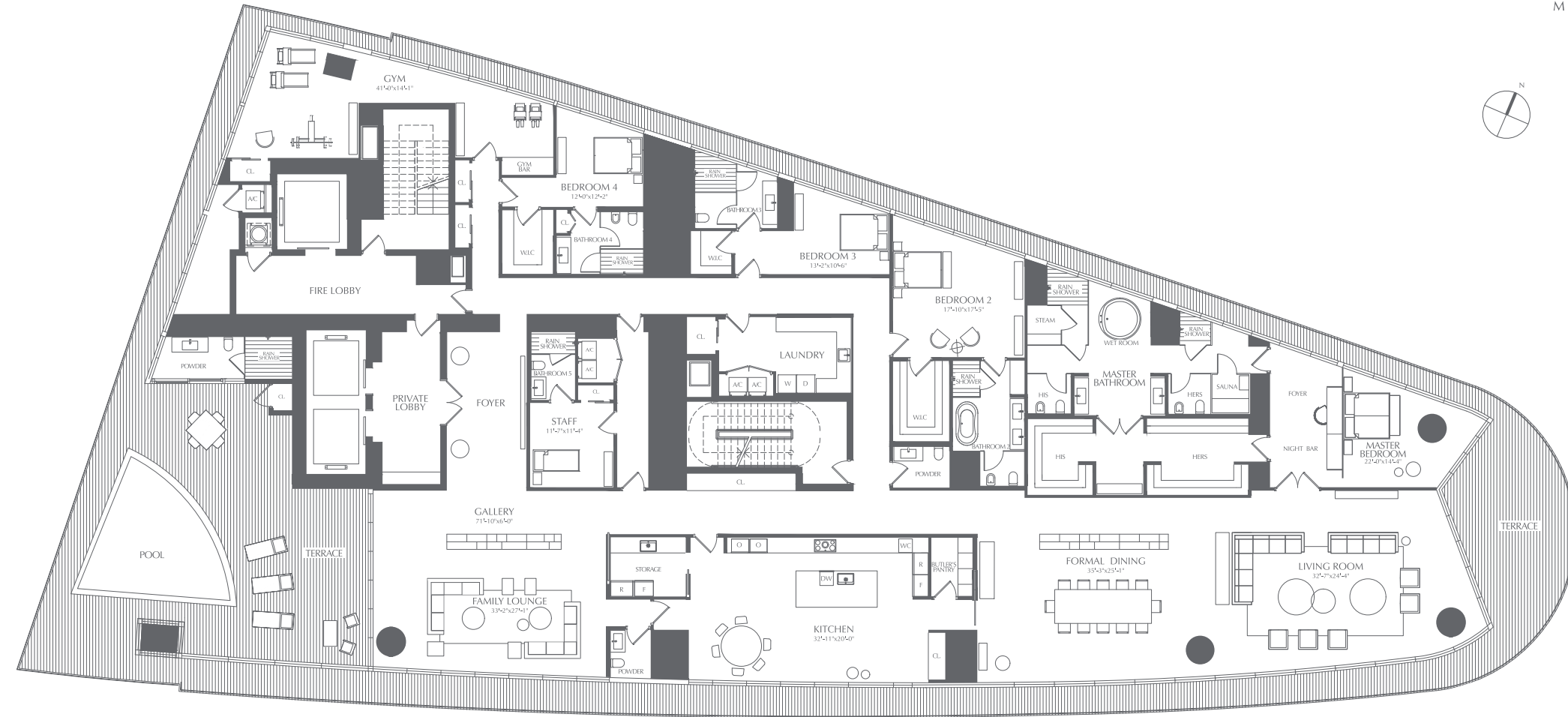


ASTON MARTIN

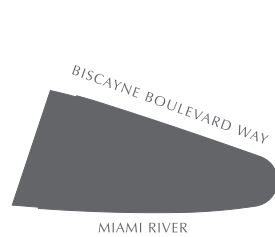
RESIDENCES

at

300 BISCAYNE BOULEVARD WAY
 MIAMI



MIAMI RIVER



LEVEL 59
 SOUTH ELEVATION

PENTHOUSE
PENTHOUSE 05
 LEVEL 60

4 BEDROOMS
 5 BATHROOMS
 3 POWDER + STAFF + FAMILY
 POOL + GYM

INTERIOR: 9,063 SQ. FT. 842 SQ. M.
 EXTERIOR: 3,324 SQ. FT. 309 SQ. M.
 TOTAL: 12,387 SQ. FT. 1,151 SQ. M.

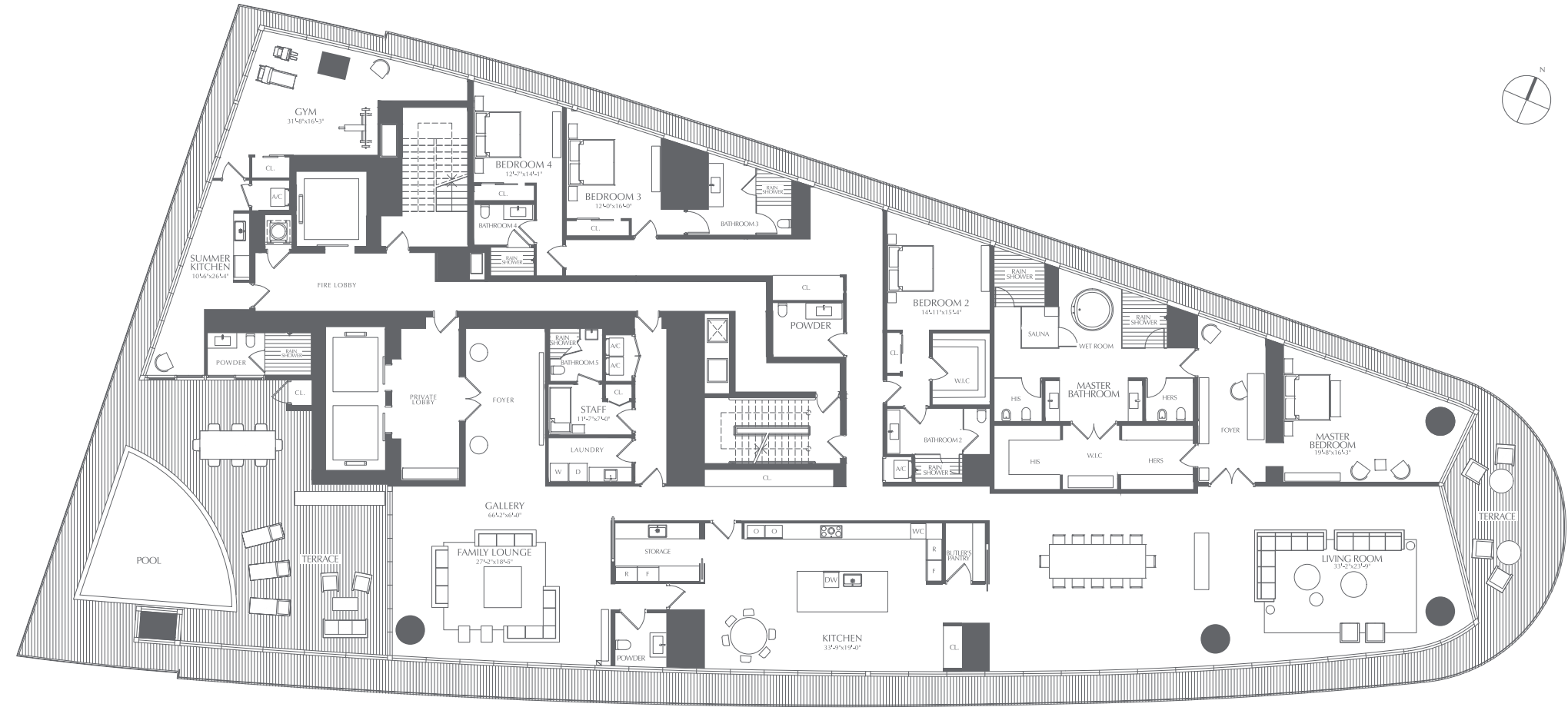


ASTON MARTIN

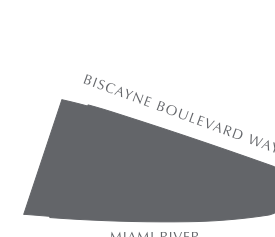
RESIDENCES

at

300 BISCAYNE BOULEVARD WAY
 MIAMI



MIAMI RIVER



LEVEL 60
 SOUTH ELEVATION

ALL PLANS, FEATURES AND AMENITIES DEPICTED HEREIN ARE BASED UPON PRELIMINARY DEVELOPMENT PLANS, AND ARE SUBJECT TO CHANGE WITHOUT NOTICE IN THE MANNER PROVIDED IN THE OFFERING DOCUMENTS. NO GUARANTEES OR REPRESENTATIONS WHATSOEVER ARE MADE THAT ANY PLANS, FEATURES, AMENITIES OR FACILITIES WILL BE PROVIDED OR, IF PROVIDED, WILL BE OF THE SAME TYPE, SIZE, LOCATION OR NATURE AS DEPICTED OR DESCRIBED HEREIN. THE SKETCHES, RENDERINGS, GRAPHIC MATERIALS, PLANS, SPECIFICATIONS, TERMS, CONDITIONS AND STATEMENTS CONTAINED IN THIS BROCHURE ARE PROPOSED ONLY, AND THE DEVELOPER RESERVES THE RIGHT TO MODIFY, REVISE OR WITHDRAW ANY OR ALL OF THE SAME IN ITS SOLE DISCRETION AND WITHOUT PRIOR NOTICE. ALL IMPROVEMENTS, DESIGNS AND CONSTRUCTION ARE SUBJECT TO FIRST OBTAINING THE APPROPRIATE FEDERAL, STATE AND LOCAL PERMITS AND APPROVALS FOR SAME. THESE DRAWINGS AND DEPICTIONS ARE CONCEPTUAL ONLY AND ARE FOR THE CONVENIENCE OF REFERENCE. THEY SHOULD NOT BE RELIED UPON AS REPRESENTATIONS, EXPRESS OR IMPLIED, OF THE FINAL DETAIL OF THE RESIDENCES. THE DEVELOPER EXPRESSLY RESERVES THE RIGHT TO MAKE MODIFICATIONS, REVISIONS AND CHANGES IT DEEMS DESIRABLE IN ITS SOLE AND ABSOLUTE DISCRETION.

ALL PLANS, FEATURES AND AMENITIES DEPICTED HEREIN ARE BASED UPON PRELIMINARY DEVELOPMENT PLANS, AND ARE SUBJECT TO CHANGE WITHOUT NOTICE IN THE MANNER PROVIDED IN THE OFFERING DOCUMENTS. NO GUARANTEES OR REPRESENTATIONS WHATSOEVER ARE MADE THAT ANY PLANS, FEATURES, AMENITIES OR FACILITIES WILL BE PROVIDED OR, IF PROVIDED, WILL BE OF THE SAME TYPE, SIZE, LOCATION OR NATURE AS DEPICTED OR DESCRIBED HEREIN. THE SKETCHES, RENDERINGS, GRAPHIC MATERIALS, PLANS, SPECIFICATIONS, TERMS, CONDITIONS AND STATEMENTS CONTAINED IN THIS BROCHURE ARE PROPOSED ONLY, AND THE DEVELOPER RESERVES THE RIGHT TO MODIFY, REVISE OR WITHDRAW ANY OR ALL OF THE SAME IN ITS SOLE DISCRETION AND WITHOUT PRIOR NOTICE. ALL IMPROVEMENTS, DESIGNS AND CONSTRUCTION ARE SUBJECT TO FIRST OBTAINING THE APPROPRIATE FEDERAL, STATE AND LOCAL PERMITS AND APPROVALS FOR SAME. THESE DRAWINGS AND DEPICTIONS ARE CONCEPTUAL ONLY AND ARE FOR THE CONVENIENCE OF REFERENCE. THEY SHOULD NOT BE RELIED UPON AS REPRESENTATIONS, EXPRESS OR IMPLIED, OF THE FINAL DETAIL OF THE RESIDENCES. THE DEVELOPER EXPRESSLY RESERVES THE RIGHT TO MAKE MODIFICATIONS, REVISIONS AND CHANGES IT DEEMS DESIRABLE IN ITS SOLE AND ABSOLUTE DISCRETION.

PENTHOUSE
PENTHOUSE 06
 LEVEL 61

4 BEDROOMS
 5 BATHROOMS
 2 POWDER + STAFF + FAMILY
 POOL + GYM + STUDIO

INTERIOR: 9,127 SQ. FT. 848 SQ. M.
 EXTERIOR: 3,399 SQ. FT. 316 SQ. M.
 TOTAL: 12,526 SQ. FT. 1,164 SQ. M.

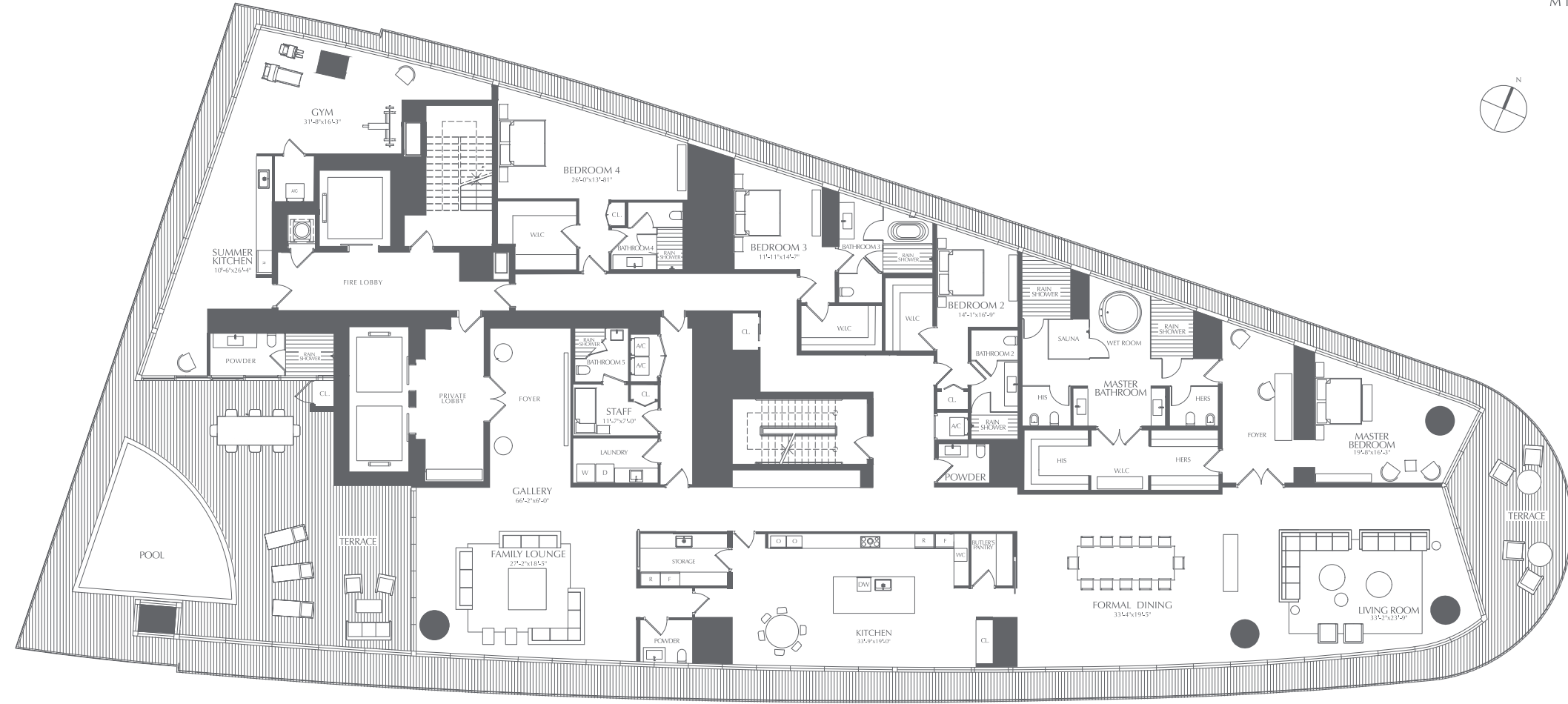


ASTON MARTIN

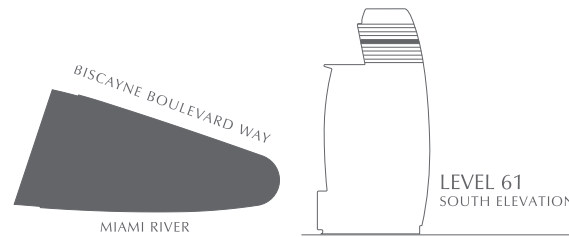
RESIDENCES

at

300 BISCAYNE BOULEVARD WAY
 MIAMI



MIAMI RIVER



LEVEL 61
 SOUTH ELEVATION

PENTHOUSE
PENTHOUSE 07
 LEVEL 62

4 BEDROOMS
 5 BATHROOMS
 2 POWDER + STAFF + FAMILY
 POOL + GYM + SPA

INTERIOR: 8,871 SQ. FT. 824 SQ. M.
 EXTERIOR: 3,468 SQ. FT. 322 SQ. M.
 TOTAL: 12,339 SQ. FT. 1,146 SQ. M.

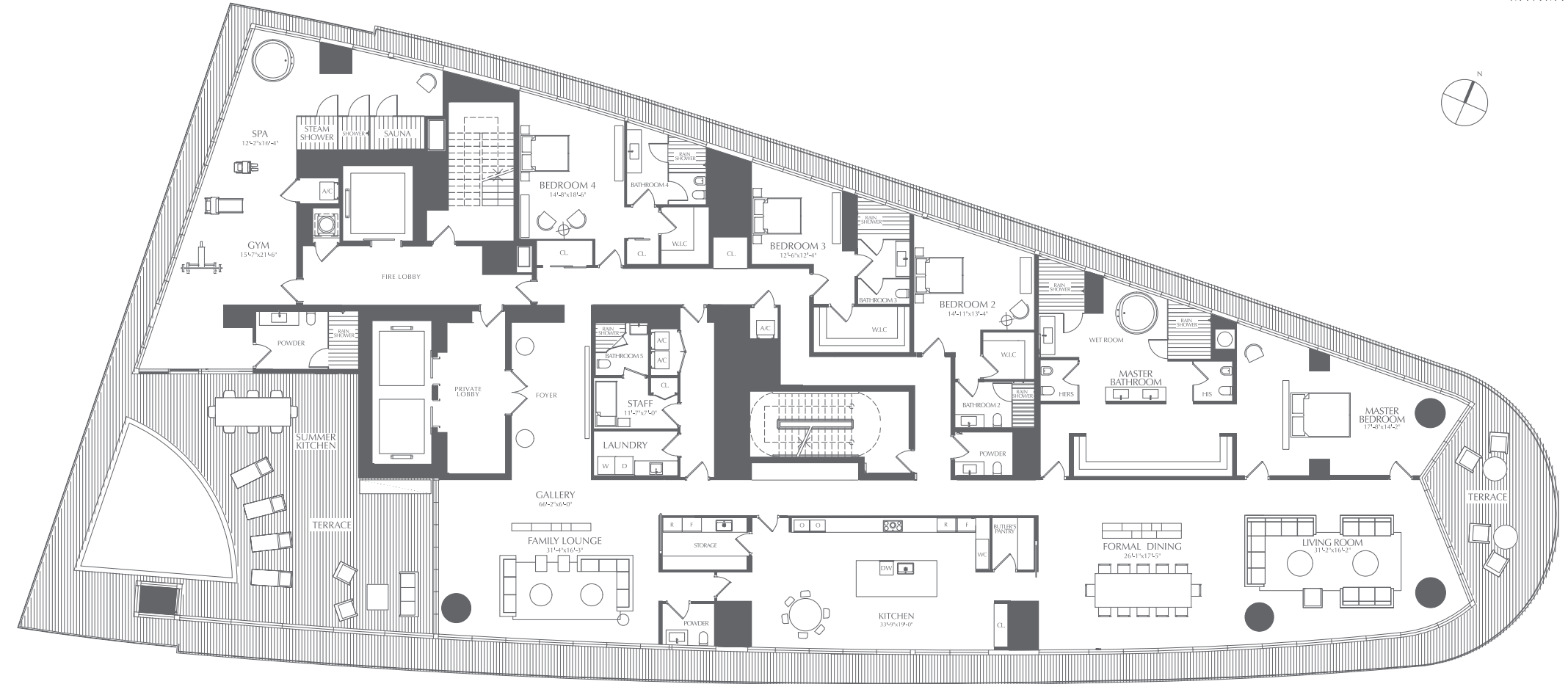


ASTON MARTIN

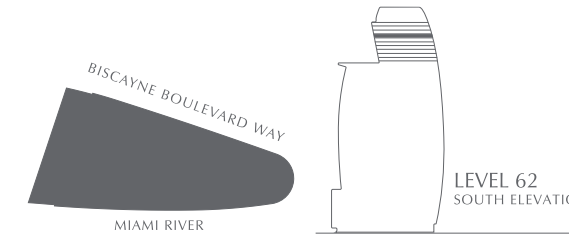
RESIDENCES

at

300 BISCAYNE BOULEVARD WAY
 MIAMI



MIAMI RIVER



LEVEL 62
 SOUTH ELEVATION

ALL PLANS, FEATURES AND AMENITIES DEPICTED HEREIN ARE BASED UPON PRELIMINARY DEVELOPMENT PLANS, AND ARE SUBJECT TO CHANGE WITHOUT NOTICE IN THE MANNER PROVIDED IN THE OFFERING DOCUMENTS. NO GUARANTEES OR REPRESENTATIONS WHATSOEVER ARE MADE THAT ANY PLANS, FEATURES, AMENITIES OR FACILITIES WILL BE PROVIDED OR, IF PROVIDED, WILL BE OF THE SAME TYPE, SIZE, LOCATION OR NATURE AS DEPICTED OR DESCRIBED HEREIN. THE SKETCHES, RENDERINGS, GRAPHIC MATERIALS, PLANS, SPECIFICATIONS, TERMS, CONDITIONS AND STATEMENTS CONTAINED IN THIS BROCHURE ARE PROPOSED ONLY, AND THE DEVELOPER RESERVES THE RIGHT TO MODIFY, REVISE OR WITHDRAW ANY OR ALL OF THE SAME IN ITS SOLE DISCRETION AND WITHOUT PRIOR NOTICE. ALL IMPROVEMENTS, DESIGNS AND CONSTRUCTION ARE SUBJECT TO FIRST OBTAINING THE APPROPRIATE FEDERAL, STATE AND LOCAL PERMITS AND APPROVALS FOR SAME. THESE DRAWINGS AND DEPICTIONS ARE CONCEPTUAL ONLY AND ARE FOR THE CONVENIENCE OF REFERENCE. THEY SHOULD NOT BE RELIED UPON AS REPRESENTATIONS, EXPRESS OR IMPLIED, OF THE FINAL DETAIL OF THE RESIDENCES. THE DEVELOPER EXPRESSLY RESERVES THE RIGHT TO MAKE MODIFICATIONS, REVISIONS AND CHANGES IT DEEMS DESIRABLE IN ITS SOLE AND ABSOLUTE DISCRETION.

ALL PLANS, FEATURES AND AMENITIES DEPICTED HEREIN ARE BASED UPON PRELIMINARY DEVELOPMENT PLANS, AND ARE SUBJECT TO CHANGE WITHOUT NOTICE IN THE MANNER PROVIDED IN THE OFFERING DOCUMENTS. NO GUARANTEES OR REPRESENTATIONS WHATSOEVER ARE MADE THAT ANY PLANS, FEATURES, AMENITIES OR FACILITIES WILL BE PROVIDED OR, IF PROVIDED, WILL BE OF THE SAME TYPE, SIZE, LOCATION OR NATURE AS DEPICTED OR DESCRIBED HEREIN. THE SKETCHES, RENDERINGS, GRAPHIC MATERIALS, PLANS, SPECIFICATIONS, TERMS, CONDITIONS AND STATEMENTS CONTAINED IN THIS BROCHURE ARE PROPOSED ONLY, AND THE DEVELOPER RESERVES THE RIGHT TO MODIFY, REVISE OR WITHDRAW ANY OR ALL OF THE SAME IN ITS SOLE DISCRETION AND WITHOUT PRIOR NOTICE. ALL IMPROVEMENTS, DESIGNS AND CONSTRUCTION ARE SUBJECT TO FIRST OBTAINING THE APPROPRIATE FEDERAL, STATE AND LOCAL PERMITS AND APPROVALS FOR SAME. THESE DRAWINGS AND DEPICTIONS ARE CONCEPTUAL ONLY AND ARE FOR THE CONVENIENCE OF REFERENCE. THEY SHOULD NOT BE RELIED UPON AS REPRESENTATIONS, EXPRESS OR IMPLIED, OF THE FINAL DETAIL OF THE RESIDENCES. THE DEVELOPER EXPRESSLY RESERVES THE RIGHT TO MAKE MODIFICATIONS, REVISIONS AND CHANGES IT DEEMS DESIRABLE IN ITS SOLE AND ABSOLUTE DISCRETION.



ASTON MARTIN

RESIDENCES

at

300 BISCAYNE BOULEVARD WAY
M I A M I

SELECTED 01
RESIDENCES

PANORAMIC RESIDENCES
RESIDENCES 01
 LEVEL 35

5 BEDROOMS
 5.5 BATHROOMS
 FAMILY + LIBRARY

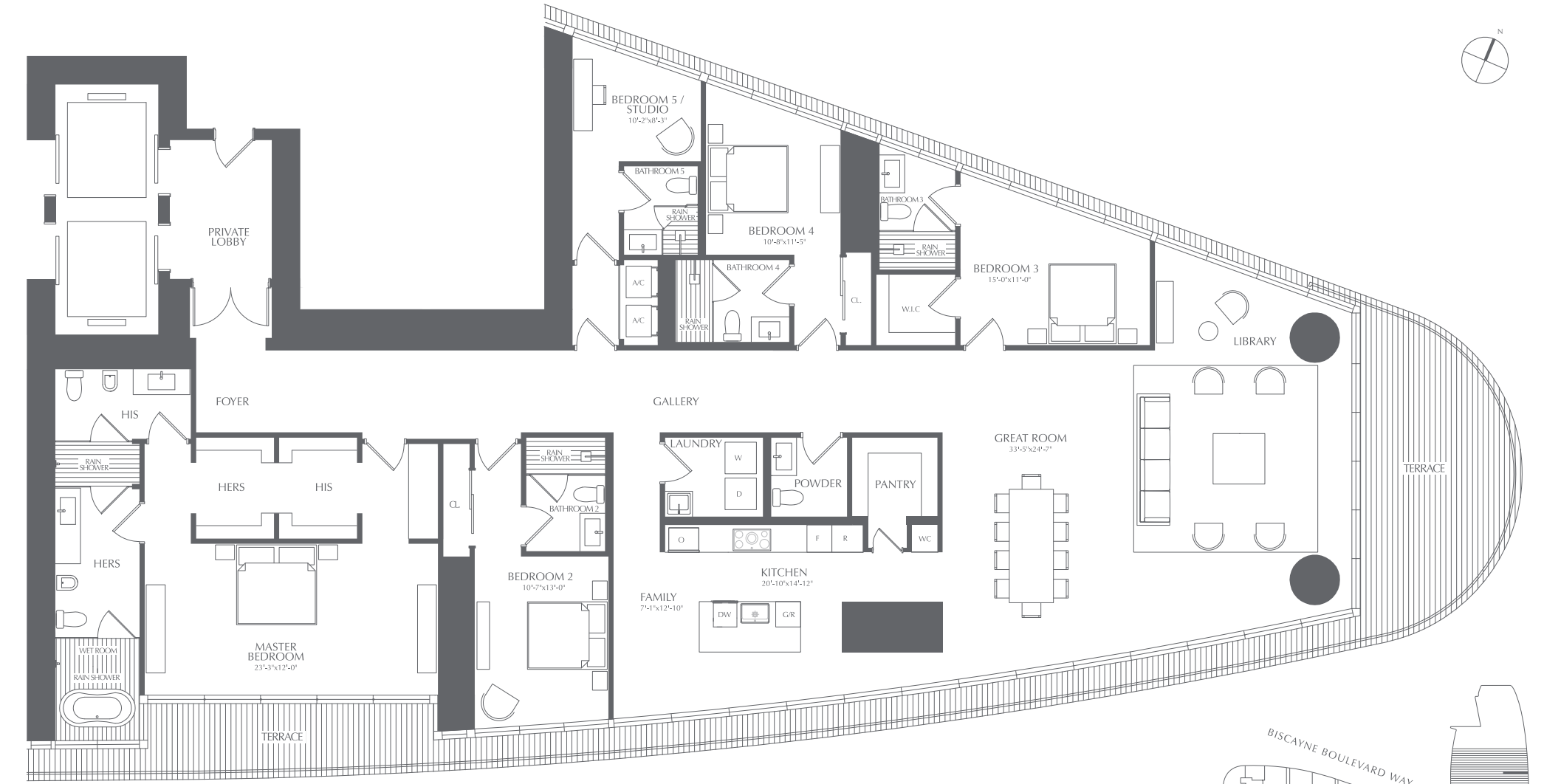
INTERIOR: 3,984 SQ. FT. 370 SQ. M.
 EXTERIOR: 627 SQ. FT. 58 SQ. M.
 TOTAL: 4,611 SQ. FT. 428 SQ. M.



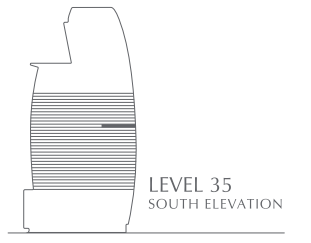
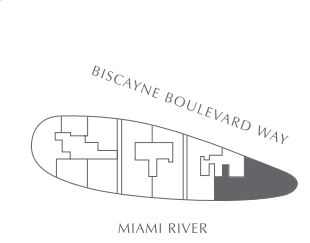
ASTON MARTIN

RESIDENCES

at
 300 BISCAYNE BOULEVARD WAY
 M I A M I



MIAMI RIVER



LEVEL 35
 SOUTH ELEVATION

ALL PLANS, FEATURES AND AMENITIES DEPICTED HEREIN ARE BASED UPON PRELIMINARY DEVELOPMENT PLANS, AND ARE SUBJECT TO CHANGE WITHOUT NOTICE IN THE MANNER PROVIDED IN THE OFFERING DOCUMENTS. NO GUARANTEES OR REPRESENTATIONS WHATSOEVER ARE MADE THAT ANY PLANS, FEATURES, AMENITIES OR FACILITIES WILL BE PROVIDED OR, IF PROVIDED, WILL BE OF THE SAME TYPE, SIZE, LOCATION OR NATURE AS DEPICTED OR DESCRIBED HEREIN. THE SKETCHES, RENDERINGS, GRAPHIC MATERIALS, PLANS, SPECIFICATIONS, TERMS, CONDITIONS AND STATEMENTS CONTAINED IN THIS BROCHURE ARE PROPOSED ONLY, AND THE DEVELOPER RESERVES THE RIGHT TO MODIFY, REVISE OR WITHDRAW ANY OR ALL OF THE SAME IN ITS SOLE DISCRETION AND WITHOUT PRIOR NOTICE. ALL IMPROVEMENTS, DESIGNS AND CONSTRUCTION ARE SUBJECT TO FIRST OBTAINING THE APPROPRIATE FEDERAL, STATE AND LOCAL PERMITS AND APPROVALS FOR SAME. THESE DRAWINGS AND DEPICTIONS ARE CONCEPTUAL ONLY AND ARE FOR THE CONVENIENCE OF REFERENCE. THEY SHOULD NOT BE RELIED UPON AS REPRESENTATIONS, EXPRESS OR IMPLIED, OF THE FINAL DETAIL OF THE RESIDENCES. THE DEVELOPER EXPRESSLY RESERVES THE RIGHT TO MAKE MODIFICATIONS, REVISIONS AND CHANGES IT DEEMS DESIRABLE IN ITS SOLE AND ABSOLUTE DISCRETION.



1200 Brickell Avenue, Suite 1660, Miami, FL, 33131
+1.305.456.7376

This brochure and its contents do not constitute an offer to sell, or a solicitation or inducement to buy, a Unit in the Condominium, nor do they contain any representation or warranty. Such an offering shall only be made pursuant to the prospectus (offering circular) for the Condominium and no statements should be relied upon unless made in the prospectus or in the applicable purchase agreement. In no event shall any solicitation, offer or sale of a Unit in the Condominium be made in, or to residents of, any state or country in which such activity would be unlawful.

All images and designs depicted in this brochure are artist's conceptual renderings, which are based upon preliminary development plans, and are subject to change without notice in the manner provided in the offering documents. Depictions and drawings of the Condominium and Units are not to scale and are shown solely for illustrative purposes. Renderings depict proposed views, which are not identical from each Unit. No guarantees or representations whatsoever are made that existing or future views of the Condominium and surrounding areas depicted by artist's conceptual renderings, or as otherwise described within this brochure, will be provided or, if provided, will be as depicted within this brochure. Any view from a Unit or from other parts of the Condominium may in the future be limited or eliminated by future development or forces of nature, and the Developer does not guarantee the continuing existence of any view.

All plans, features and amenities listed and/or depicted herein are based upon preliminary development plans and are subject to change without notice in the manner provided in the offering documents. No guarantees or representations whatsoever are made that any plans, features, amenities, or facilities will be provided or, if provided, will be of the same type, size, location, or nature as depicted or as otherwise described within this brochure.

The depictions, sketches, renderings, graphic materials, plans, drawings, descriptions and specifications contained in this brochure are conceptual only and should not be relied upon as representations, express or implied, of the final detail of the Condominium and Units. The Developer reserves the right to modify, revise or withdraw any or all of same in its sole discretion and without prior notice. All improvements, designs and construction are subject to first obtaining the appropriate federal, state, and local permits and approvals.

Ceiling heights are measured from top of slab to top of slab. As a result, actual clearance between the top of the finished floor coverings and the underside of the finished ceiling, drop ceiling or soffits will be less. All ceiling heights are approximate and subject to change.

Stated square footages and dimensions are measured to the exterior boundaries of the exterior walls and the centerline of interior demising walls and vary from the square footage and dimensions that would be determined by using the description and definition of the "Unit" set forth in the Declaration (which generally only includes the interior airspace between the perimeter walls and excludes all interior structural components and other common elements). This method is generally used in sales materials and is provided to allow a prospective buyer to compare the Units with units in other condominium projects that utilize the same method. Measurements of rooms set forth on the floorplans are generally taken at the farthest points of each given room (as if the room were a perfect rectangle), without regard for any cutouts or variations. Accordingly, the area of the actual room will typically be smaller than the product obtained by multiplying the stated length and width. All dimensions are estimates which will vary with actual construction, and all floorplans, specifications and other development plans are subject to change and will not necessarily accurately reflect the final plans and specifications for the Condominium.

While primarily a residential tower, the Condominium does contain limited commercial units; see the offering materials for details. The Condominium is presently only proposed and under construction and is subject to any changes Developer chooses to make prior to completion.

Whilst the Condominium is adjacent to the Miami River, the marina is not included as part of the Condominium. The adjacent dockage and marina are intended to be owned and/or operated by a private party and any rights of use of the marina (if any) shall be in the sole discretion of such private party.

The Miami Riverwalk Limited Edition (Aston Martin DB11 V8 Coupe or Aston Martin DBX) is only included with the purchase of a Unit if the purchase agreement for such Unit expressly includes an amendment and/or rider that expressly provides that the purchase of the Unit will include a Miami Riverwalk Limited Edition.

Riverwalk East Developments, LLC, a Florida limited liability company, is the owner of the property on which the Condominium is being constructed and the seller of the Units in the Condominium and is for purposes of the Florida Condominium Act the "developer" of the Condominium ("Developer"). Developer has engaged G & G Business Developments, LLC. ("G & G") to assist with the development and marketing of the Condominium and its Units and Developer has a limited right to use the trademarked names and logos of G & G pursuant to a license and marketing agreement with G&G. Any and all statements, disclosures and/or representations relating to the Condominium shall be deemed made by Developer and not by G & G and you agree to look solely to Developer (and not to G & G and/or any of its affiliates) with respect to any and all matters relating to the development and/or marketing of the Condominium and with respect to the sales of Units in the Condominium.


Aston Martin Lagonda Limited and its affiliates ("Aston Martin") have no ownership interest in, and have not participated in the development or sale of, the Condominium or Units. The Developer and G&G have been granted limited licenses to use certain Aston Martin trademarks in connection with the Condominium. The Condominium Association has been granted (or will be granted subject to the occurrence of certain events) a limited license to use certain Aston Martin trademarks in connection with the Condominium. All use of the Aston Martin trademarks in connection with the Condominium will cease upon expiration or earlier termination of the licenses. Aston Martin has not confirmed the accuracy of any marketing, sales or Condominium materials provided by the Developer and nor does it make any statement or give any warranty or representation in respect of the Condominium or any marketing, sales or Condominium materials. Aston Martin has not acted as a broker, finder or agent for the Developer or otherwise in connection with the sale of the Units.

Copyright © G&G and Aston Martin 2021

This brochure and all materials and content contained in it are protected by copyright, trademarks and other intellectual property rights owned by G&G and/or Aston Martin. Such content and materials may not be used or reproduced (in whole or part) for any commercial purpose without the consent of G&G and/or Aston Martin.

"Aston Martin" and the Aston Martin "wings" logo are trademarks of Aston Martin Lagonda Limited.

We are pledged to the letter and spirit of U.S. policy for the achievement of equal housing throughout the nation. We encourage and support an affirmative advertising, marketing, and sales program in which there are no barriers to obtaining housing because of race, color, sex, religion, handicap, familial status or national origin.

 THESE REPRESENTATIONS CANNOT BE RELIED UPON AS CORRECTLY STATING THE REPRESENTATIONS OF THE DEVELOPER. FOR CORRECT REPRESENTATIONS, MAKE REFERENCE TO THE CONTRACT AND TO THE DOCUMENTS REQUIRED BY SECTION 718.503, FLORIDA STATUTES, TO BE FURNISHED BY A DEVELOPER TO A BUYER OR LESSEE.

astonmartinresidences.com



ASTON MARTIN

RESIDENCES

at

300 BISCAYNE BOULEVARD WAY
M I A M I

Developed by G&G Business Developments LLC