

Sunset
Collection

Upper Penthouse
Residence

02

Level 8

3 BEDROOMS + DEN
3.5 BATHROOMS

INTERIOR
1,834 SQ FT ~ 170 SQ M

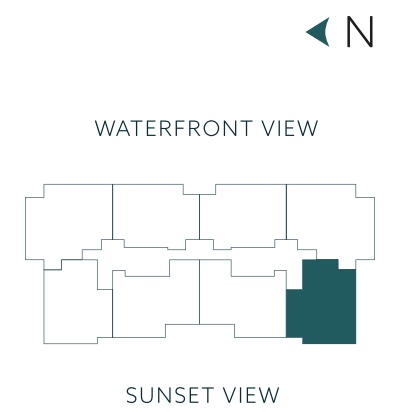
EXTERIOR
540 SQ FT ~ 50 SQ M

TOTAL
2,374 SQ FT ~ 220 SQ M



Sunset View

LA BAIA
NORTH



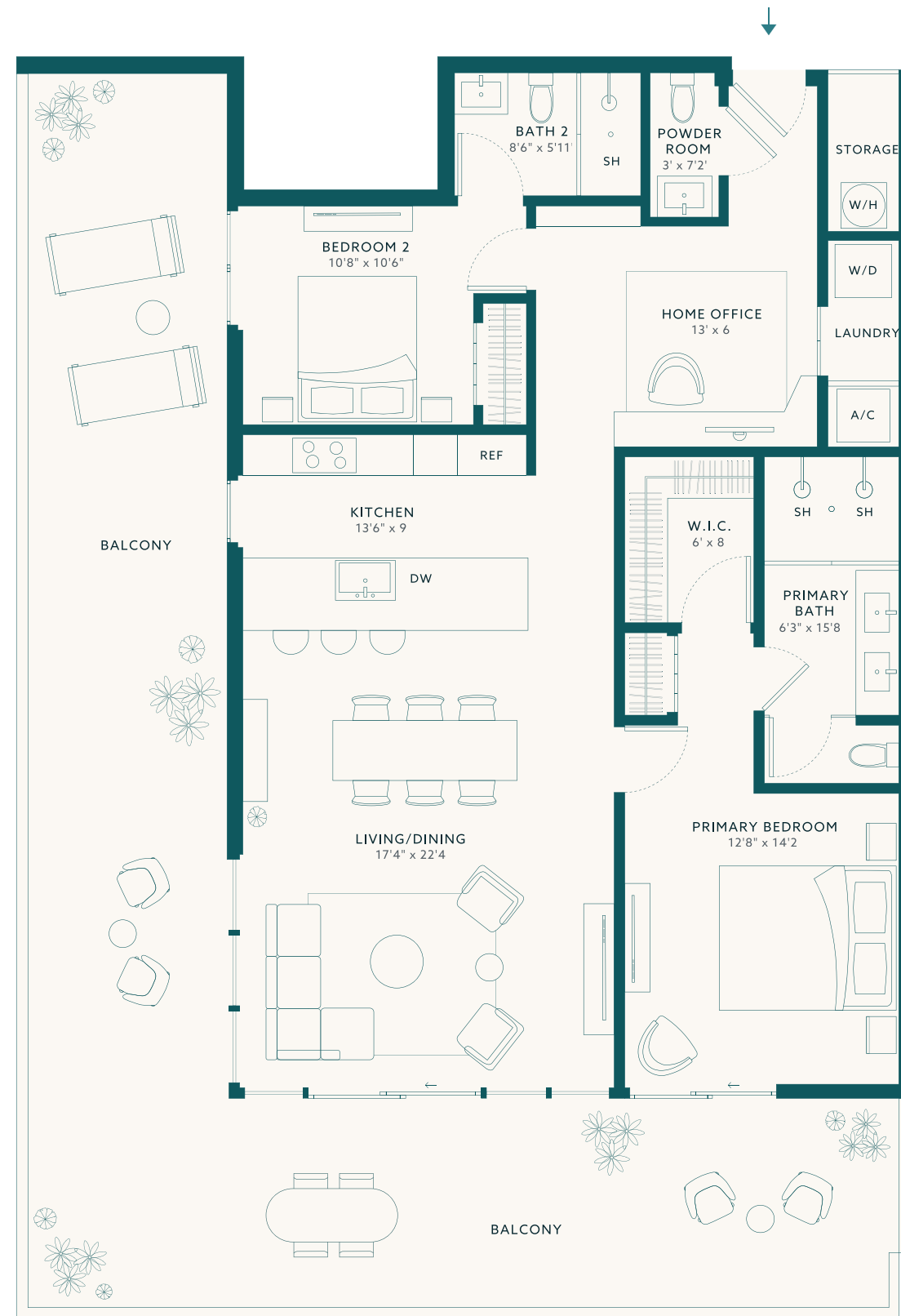
Stated dimensions are measured to the exterior boundaries of the exterior walls and the centerline of interior demising walls and in fact vary from the dimensions that would be determined by using the description and definition of the "Unit" set forth in the Declaration (which generally only includes the interior airspace between the perimeter walls and excludes interior structural components). For your reference, the area of the Unit, determined in accordance with those defined unit boundaries, is 1,834 square footage. Note that measurements of rooms set forth on this floor plan are generally taken at the greatest points of each given room (as if the room were a perfect rectangle), without regard for any cutouts. Accordingly, the area of the actual room will typically be smaller than the product obtained by multiplying the stated length times width. All dimensions are approximate and may vary with actual construction, and all floor plans and development plans are subject to change.



Sunset
Collection

Residence
210

2 BEDROOMS + DEN
2.5 BATHROOMS

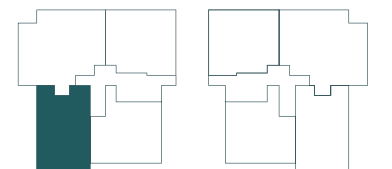


○
Sunset View

LA BAIA
NORTH



WATERFRONT VIEW



SUNSET VIEW

INTERIOR
1,450 SQ FT ~ 135 SQ M

EXTERIOR
1,018 SQ FT ~ 94 SQ M

TOTAL
2,468 SQ FT ~ 229 SQ M

Stated dimensions are measured to the exterior boundaries of the exterior walls and the centerline of interior demising walls and in fact vary from the dimensions that would be determined by using the description and definition of the "Unit" set forth in the Declaration (which generally only includes the interior airspace between the perimeter walls and excludes interior structural components). For your reference, the area of the Unit, determined in accordance with those defined unit boundaries, is 1,450 square footage. Note that measurements of rooms set forth on this floor plan are generally taken at the greatest points of each given room (as if the room were a perfect rectangle), without regard for any cutouts. Accordingly, the area of the actual room will typically be smaller than the product obtained by multiplying the stated length times width. All dimensions are approximate and may vary with actual construction, and all floor plans and development plans are subject to change.





Waterfront Collection

Residence

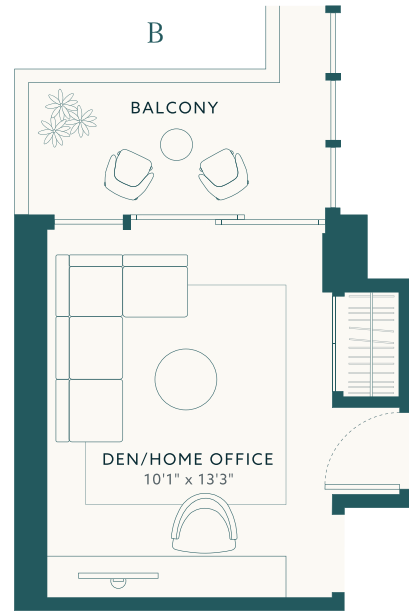
09

Option A

4 BEDROOMS
4.5 BATHROOMS

Option B

3 BEDROOMS + DEN
4.5 BATHROOMS



LA BAIA

NORTH

RESIDENCES

309, 409, 509 & 609

INTERIOR

2,111 SQ FT ~ 196 SQ M

EXTERIOR

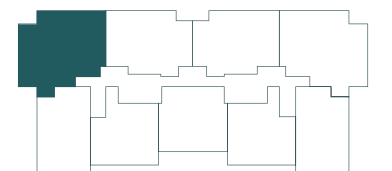
321 SQ FT ~ 29 SQ M

TOTAL

2,432 SQ FT ~ 225 SQ M



WATERFRONT VIEW



SUNSET VIEW

Stated dimensions are measured to the exterior boundaries of the exterior walls and the centerline of interior demising walls and in fact vary from the dimensions that would be determined by using the description and definition of the "Unit" set forth in the Declaration (which generally only includes the interior airspace between the perimeter walls and excludes interior structural components). For your reference, the area of the Unit, determined in accordance with those defined unit boundaries, is 2,111 square footage. Note that measurements of rooms set forth on this floor plan are generally taken at the greatest points of each given room (as if the room were a perfect rectangle), without regard for any cutouts. Accordingly, the area of the actual room will typically be smaller than the product obtained by multiplying the stated length times width. All dimensions are approximate and may vary with actual construction, and all floor plans and development plans are subject to change.





Waterfront Collection

Residence

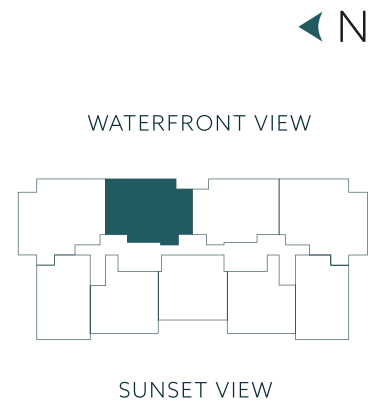
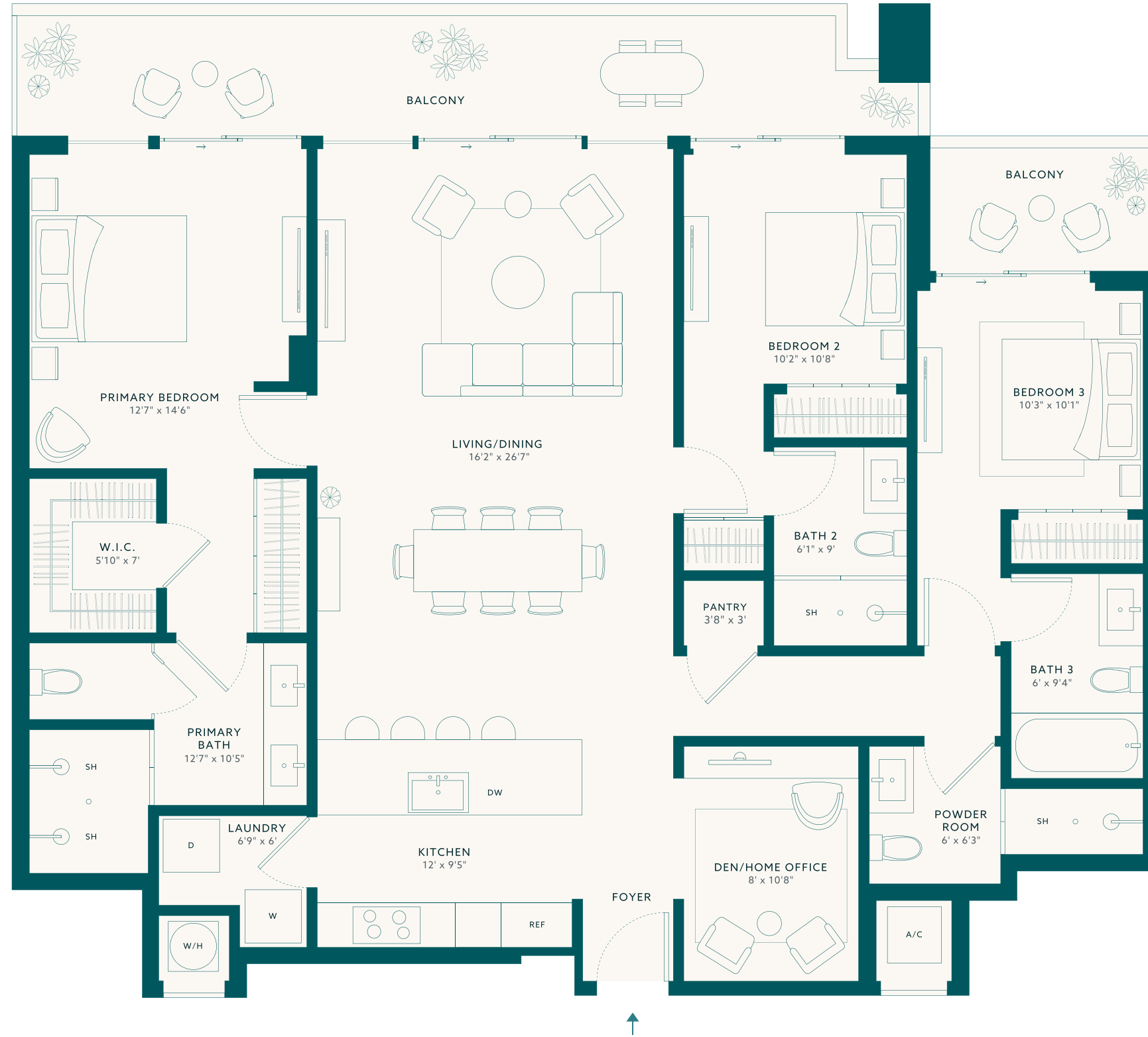
07

3 BEDROOMS + DEN
4 BATHROOMS

Waterfront View

LA BAIA

NORTH



RESIDENCES
407 & 607
INTERIOR
1,811 SQ FT ~ 168 SQ M
EXTERIOR
293 SQ FT ~ 27 SQ M
TOTAL
2,104 SQ FT ~ 195 SQ M

Stated dimensions are measured to the exterior boundaries of the exterior walls and the centerline of interior demising walls and in fact vary from the dimensions that would be determined by using the description and definition of the "Unit" set forth in the Declaration (which generally only includes the interior airspace between the perimeter walls and excludes interior structural components). For your reference, the area of the Unit, determined in accordance with those defined unit boundaries, is 1,811 square footage. Note that measurements of rooms set forth on this floor plan are generally taken at the greatest points of each given room (as if the room were a perfect rectangle), without regard for any cutouts. Accordingly, the area of the actual room will typically be smaller than the product obtained by multiplying the stated length times width. All dimensions are approximate and may vary with actual construction, and all floor plans and development plans are subject to change.



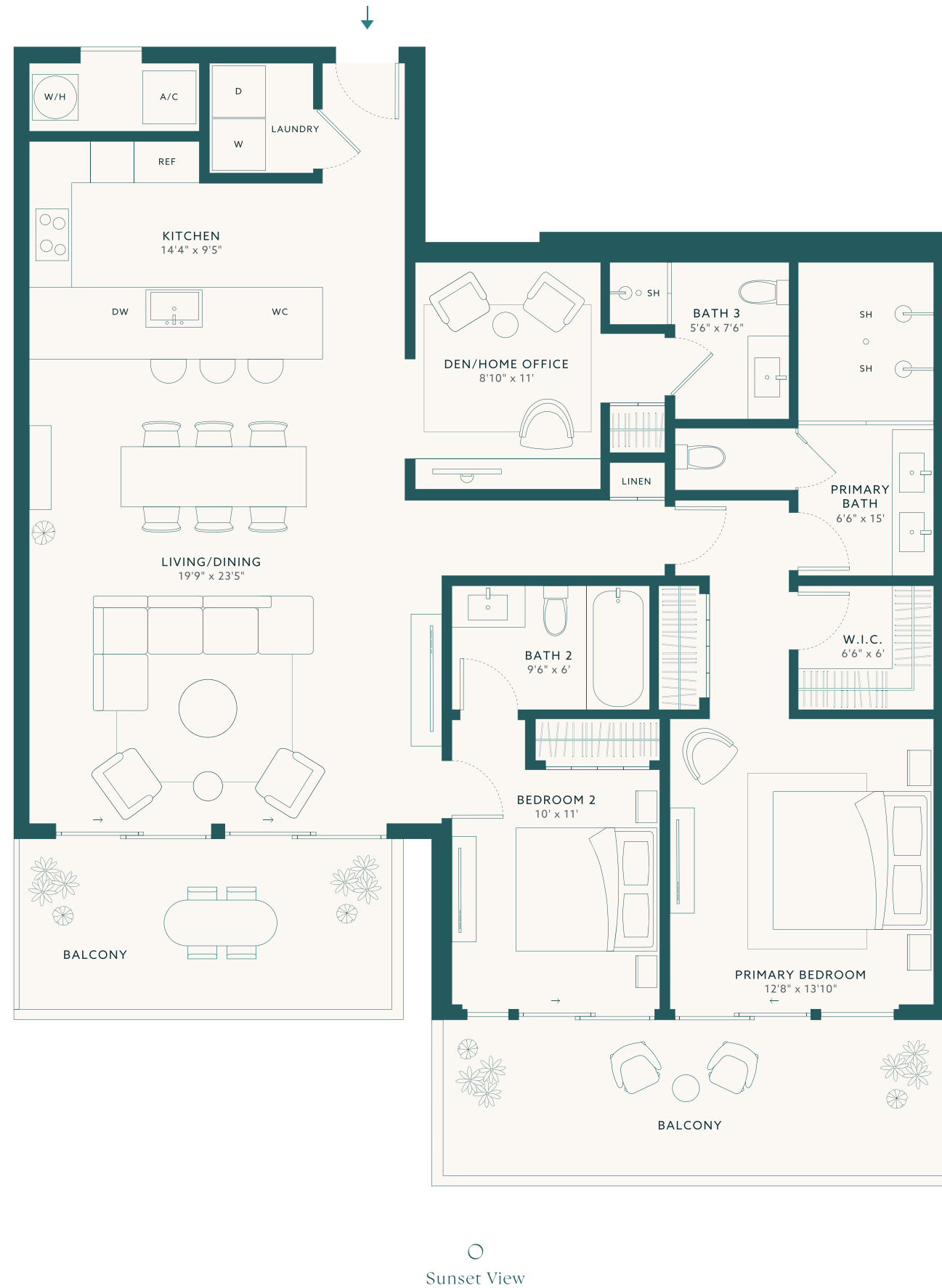

Sunset
Collection

Lower Penthouse
Residence

04

Level 7

2 BEDROOMS + DEN
3 BATHROOMS

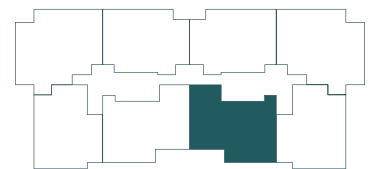



Sunset View

LA BAIA
NORTH



WATERFRONT VIEW



SUNSET VIEW

INTERIOR
1,616 SQ FT ~ 150 SQ M
EXTERIOR
340 SQ FT ~ 31 SQ M
TOTAL
1,956 SQ FT ~ 181 SQ M

Stated dimensions are measured to the exterior boundaries of the exterior walls and the centerline of interior demising walls and in fact vary from the dimensions that would be determined by using the description and definition of the "Unit" set forth in the Declaration (which generally only includes the interior airspace between the perimeter walls and excludes interior structural components). For your reference, the area of the Unit, determined in accordance with those defined unit boundaries, is 1,616 square footage. Note that measurements of rooms set forth on this floor plan are generally taken at the greatest points of each given room (as if the room were a perfect rectangle), without regard for any cutouts. Accordingly, the area of the actual room will typically be smaller than the product obtained by multiplying the stated length times width. All dimensions are approximate and may vary with actual construction, and all floor plans and development plans are subject to change.





Waterfront Collection

Lower Penthouse Residence

01

Level 7

Option A

4 BEDROOMS
4.5 BATHROOMS

Option B

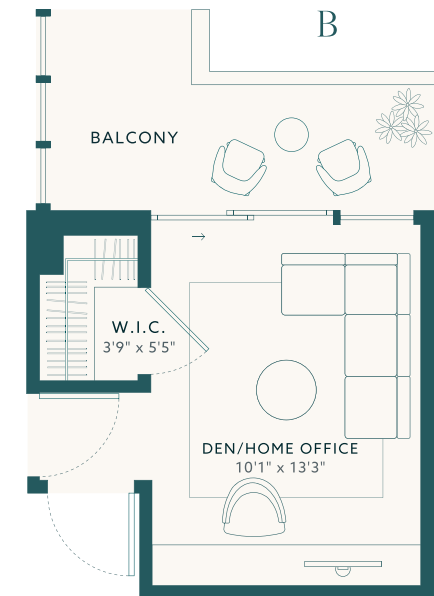
3 BEDROOMS + DEN
4.5 BATHROOMS

INTERIOR
2,076 SQ FT ~ 193 SQ M

EXTERIOR
329 SQ FT ~ 30 SQ M

TOTAL
2,405 SQ FT ~ 223 SQ M

Waterfront View

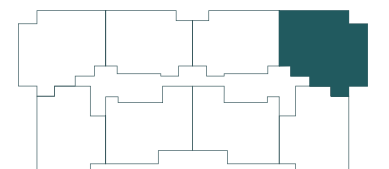


LA BAIA

NORTH



WATERFRONT VIEW



SUNSET VIEW

Stated dimensions are measured to the exterior boundaries of the exterior walls and the centerline of interior demising walls and in fact vary from the dimensions that would be determined by using the description and definition of the "Unit" set forth in the Declaration (which generally only includes the interior airspace between the perimeter walls and excludes interior structural components). For your reference, the area of the Unit, determined in accordance with those defined unit boundaries, is 2,076 square footage. Note that measurements of rooms set forth on this floor plan are generally taken at the greatest points of each given room (as if the room were a perfect rectangle), without regard for any cutouts. Accordingly, the area of the actual room will typically be smaller than the product obtained by multiplying the stated length times width. All dimensions are approximate and may vary with actual construction, and all floor plans and development plans are subject to change.

