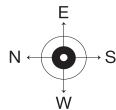
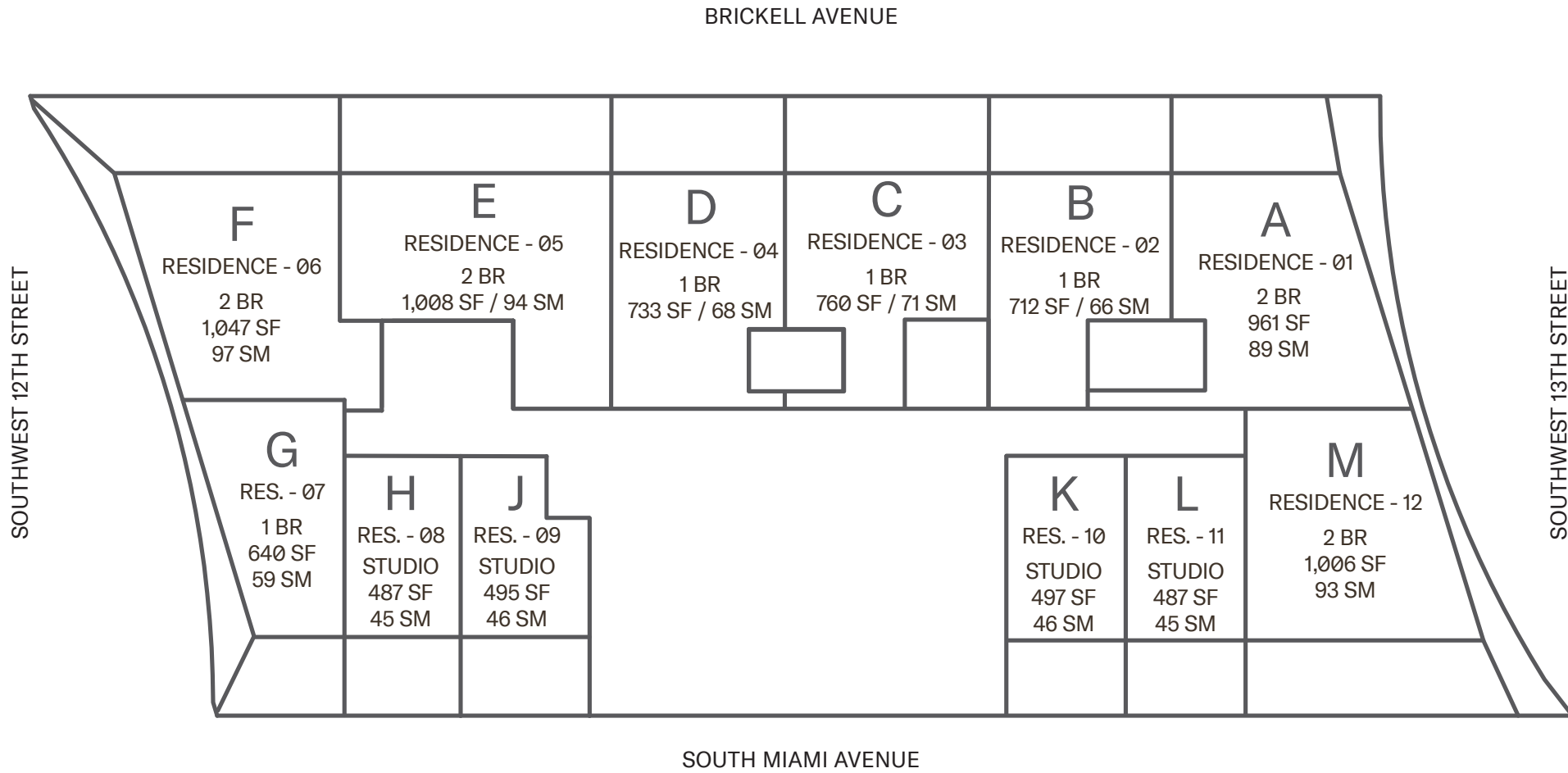


LEVELS 12-42

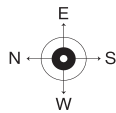
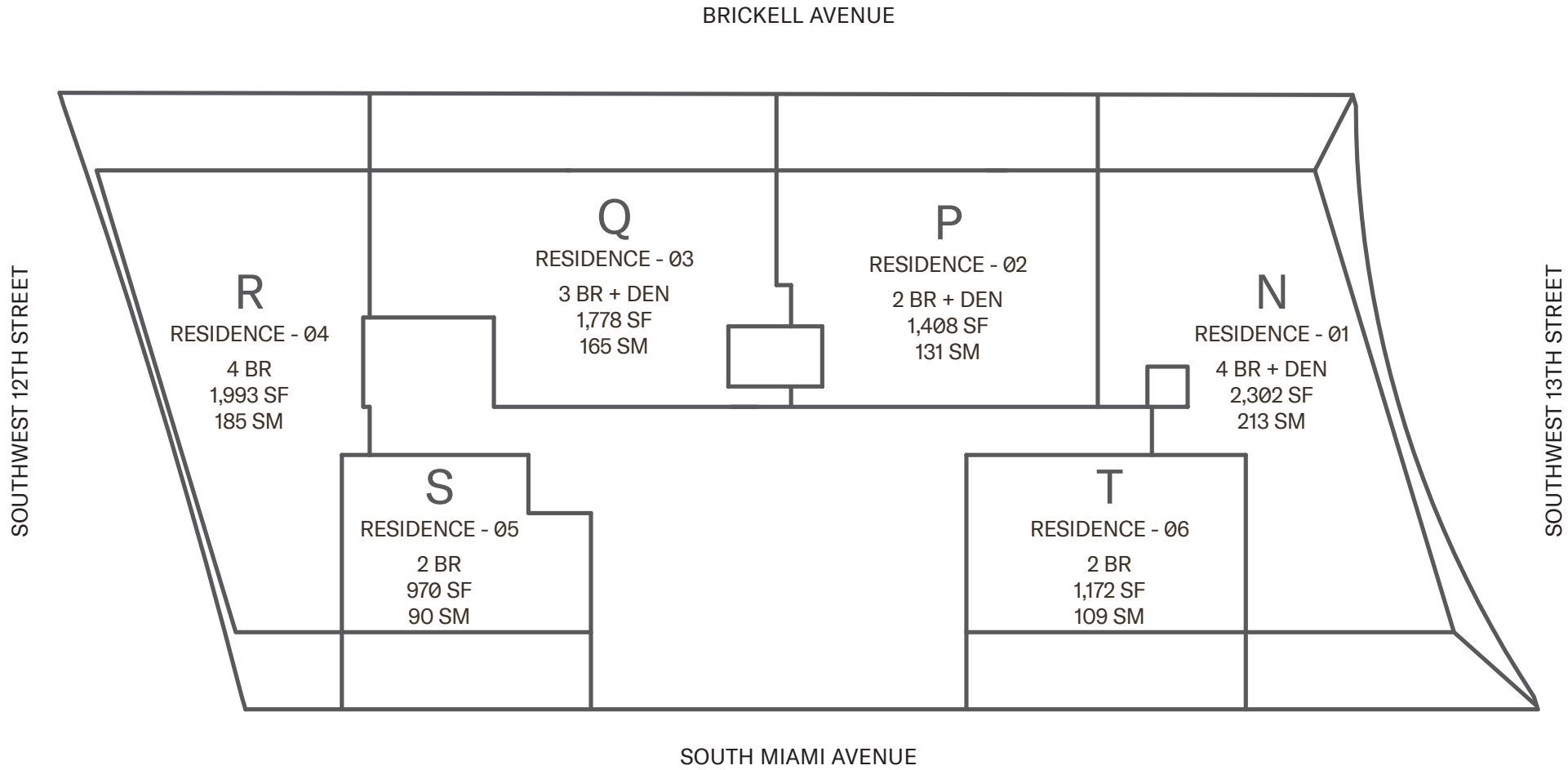


1210 Brickell Avenue, Miami, FL 33131

Developed By
FORTUNE
INTERNATIONAL
GROUP

THIS PROJECT IS NOT OWNED, DESIGNED, DEVELOPED, OFFERED OR SOLD BY ORA BY CASA TUA LLC OR ITS AFFILIATES (COLLECTIVELY, "BRAND"). 1210 BRICKELL OWNER, LLC, THE DEVELOPER OF THE PROJECT OR ITS AFFILIATES (COLLECTIVELY, "DEVELOPER") USES THE BRAND'S TRADEMARKS PURSUANT TO A LICENSE AGREEMENT WITH THE BRAND, WHICH MAY BE TERMINATED OR REVOKED ACCORDING TO ITS TERMS. THE BRAND HAS NOT CONFIRMED THE ACCURACY OF, AND IS NOT RESPONSIBLE FOR, ANY OF THE STATEMENTS OR REPRESENTATIONS MADE HEREIN. ORAL REPRESENTATIONS CANNOT BE RELIED UPON AS CORRECTLY STATING REPRESENTATIONS OF THE DEVELOPER. FOR CORRECT REPRESENTATIONS, MAKE REFERENCE TO THE DOCUMENTS THAT ARE REQUIRED BY SECTION 718.503, FLORIDA STATUTES, TO BE FURNISHED BY A DEVELOPER TO A BUYER OR LESSEE. THE DEVELOPER IS 1210 BRICKELL, LLC, WHICH HAS A RIGHT TO USE THE TRADEMARK NAMES AND LOGOS OF FORTUNE INTERNATIONAL GROUP. THIS IS NOT AN OFFER TO SELL, OR SOLICITATION OF OFFERS TO BUY, IN STATES WHERE SUCH OFFER OR SOLICITATION CANNOT BE MADE. All depictions of appliances, counters, soffits, floor coverings, accessories, furniture, fixtures, and all other items of decoration are strictly for illustrative and display purposes only and is intended to act as an example to assist purchasers in visualizing a fully furnished unit. Such depictions should not be relied upon as a representation of the final product. All such items will not be included with the unit unless otherwise provided for in the purchase and sale documents and are subject to changes or substitution without notice. Stated square footages and dimensions are measured to the exterior boundaries of the exterior walls and the centerline of interior demising walls and in fact vary from the square footage and dimensions that would be determined by using the description and definition of the "Unit" set forth in the Declaration (which generally only includes the interior airspace between the perimeter walls and excludes all interior structural components and other common elements). This method is generally used in sales materials and is provided to allow a prospective buyer to compare the Units with units in other condominium projects that utilize the same method. Measurements of rooms set forth on this floor plan are generally taken at the farthest points of each given room (as if the room were a perfect rectangle), without regard for any cutouts or variations. Accordingly, the area of the actual room will typically be smaller than the product obtained by multiplying the stated length and width. All dimensions are estimates which will vary with actual construction, and all floor plans, specifications and other development plans are subject to change and will not necessarily accurately reflect the final plans and specifications for the development.

LEVELS 45-74



1210 Brickell Avenue, Miami, FL 33131

Developed By
FORTUNE
INTERNATIONAL
GROUP

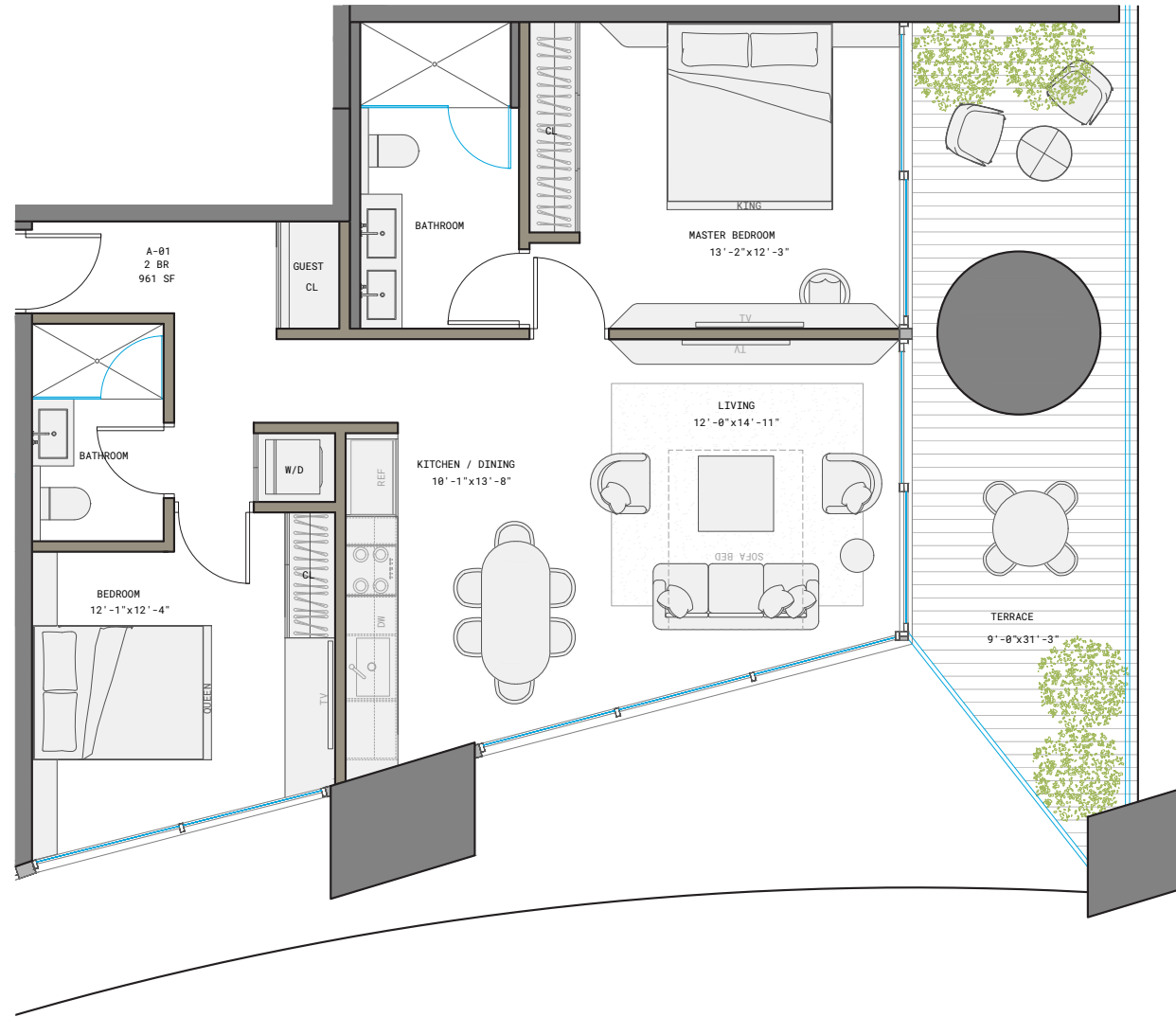
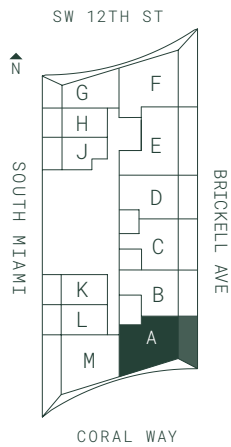
THIS PROJECT IS NOT OWNED, DESIGNED, DEVELOPED, OFFERED OR SOLD BY ORA BY CASA TUA LLC OR ITS AFFILIATES (COLLECTIVELY, "BRAND"). 1210 BRICKELL OWNER, LLC, THE DEVELOPER OF THE PROJECT OR ITS AFFILIATES (COLLECTIVELY, "DEVELOPER") USES THE BRAND'S TRADEMARKS PURSUANT TO A LICENSE AGREEMENT WITH THE BRAND, WHICH MAY BE TERMINATED OR REVOKED ACCORDING TO ITS TERMS. THE BRAND HAS NOT CONFIRMED THE ACCURACY OF, AND IS NOT RESPONSIBLE FOR, ANY OF THE STATEMENTS OR REPRESENTATIONS MADE HEREIN. ORAL REPRESENTATIONS CANNOT BE RELIED UPON AS CORRECTLY STATING REPRESENTATIONS OF THE DEVELOPER. FOR CORRECT REPRESENTATIONS, MAKE REFERENCE TO THE DOCUMENTS THAT ARE REQUIRED BY SECTION 718.503, FLORIDA STATUTES, TO BE FURNISHED BY A DEVELOPER TO A BUYER OR LESSEE. THE DEVELOPER IS 1210 BRICKELL, LLC, WHICH HAS A RIGHT TO USE THE TRADEMARK NAMES AND LOGOS OF FORTUNE INTERNATIONAL GROUP. THIS IS NOT AN OFFER TO SELL, OR SOLICITATION OF OFFERS TO BUY, IN STATES WHERE SUCH OFFER OR SOLICITATION CANNOT BE MADE. All depictions of appliances, counters, soffits, floor coverings, accessories, furniture, fixtures, and all other items of decoration are strictly for illustrative and display purposes only and is intended to act as an example to assist purchasers in visualizing a fully furnished unit. Such depictions should not be relied upon as a representation of the final product. All such items will not be included with the unit unless otherwise provided for in the purchase and sale documents and are subject to changes or substitution without notice. Stated square footages and dimensions are measured to the exterior boundaries of the exterior walls and the centerline of interior demising walls and in fact vary from the square footage and dimensions that would be determined by using the description and definition of the "Unit" set forth in the Declaration (which generally only includes the interior airspace between the perimeter walls and excludes all interior structural components and other common elements). This method is generally used in sales materials and is provided to allow a prospective buyer to compare the Units with units in other condominium projects that utilize the same method. Measurements of rooms set forth on this floor plan are generally taken at the farthest points of each given room (as if the room were a perfect rectangle), without regard for any cutouts or variations. Accordingly, the area of the actual room will typically be smaller than the product obtained by multiplying the stated length and width. All dimensions are estimates which will vary with actual construction, and all floor plans, specifications and other development plans are subject to change and will not necessarily accurately reflect the final plans and specifications for the development.

RESIDENCE A

LINE 01

2 BED | 2 BATH

INTERIOR 961 SF | 89 M²



1210 Brickell Avenue, Miami, FL 33131

Developed By
FORTUNE
INTERNATIONAL
GROUP

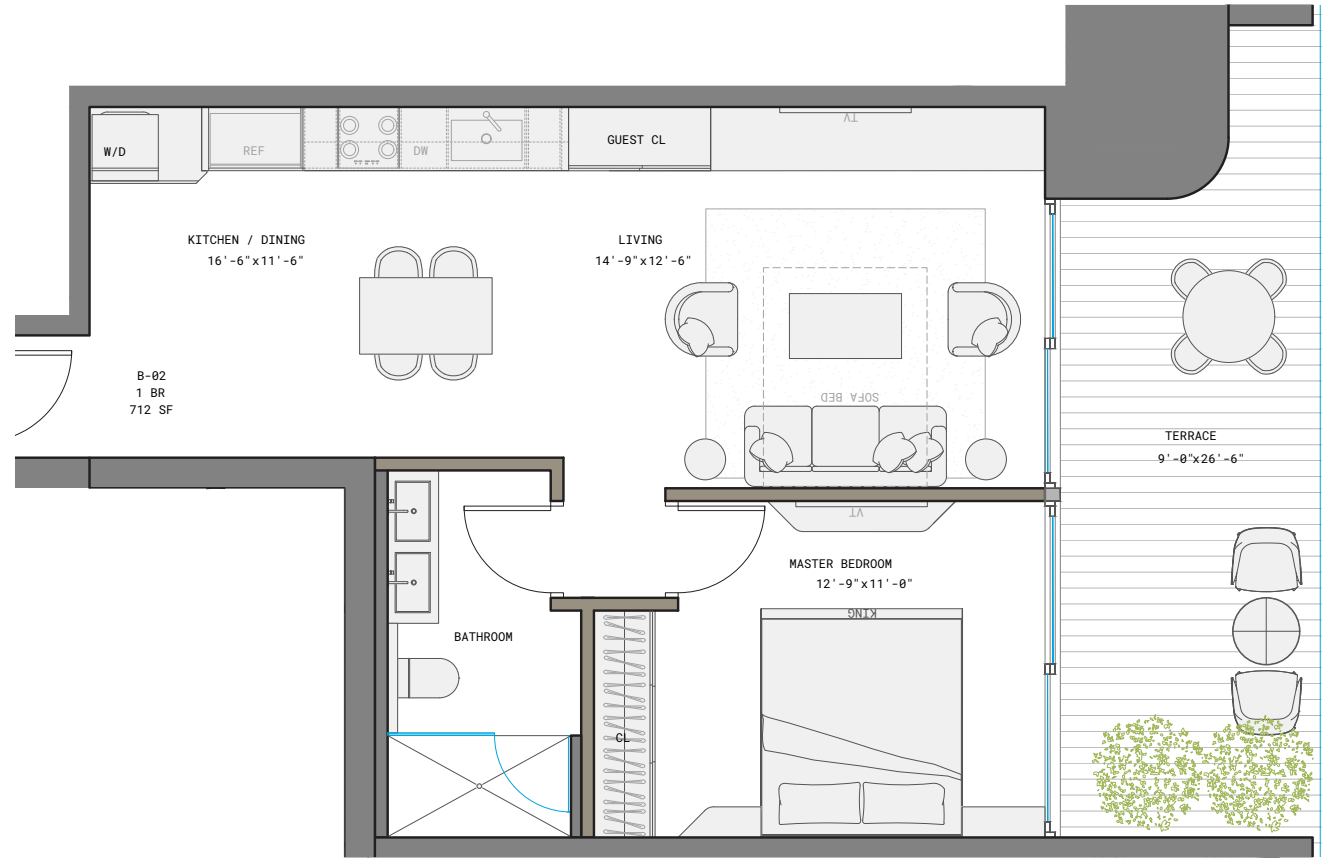
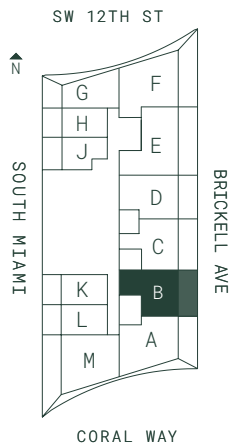
THIS PROJECT IS NOT OWNED, DESIGNED, DEVELOPED, OFFERED OR SOLD BY ORA BY CASA TUA LLC OR ITS AFFILIATES (COLLECTIVELY, "BRAND"). 1210 BRICKELL OWNER, LLC, THE DEVELOPER OF THE PROJECT OR ITS AFFILIATES (COLLECTIVELY, "DEVELOPER") USES THE BRAND'S TRADEMARKS PURSUANT TO A LICENSE AGREEMENT WITH THE BRAND, WHICH MAY BE TERMINATED OR REVOKED ACCORDING TO ITS TERMS. THE BRAND HAS NOT CONFIRMED THE ACCURACY OF, AND IS NOT RESPONSIBLE FOR, ANY OF THE STATEMENTS OR REPRESENTATIONS MADE HEREIN. ORAL REPRESENTATIONS CANNOT BE RELIED UPON AS CORRECTLY STATING REPRESENTATIONS OF THE DEVELOPER. FOR CORRECT REPRESENTATIONS, MAKE REFERENCE TO THE DOCUMENTS THAT ARE REQUIRED BY SECTION 718.503, FLORIDA STATUTES, TO BE FURNISHED BY A DEVELOPER TO A BUYER OR LESSEE. THE DEVELOPER IS 1210 BRICKELL, LLC, WHICH HAS A RIGHT TO USE THE TRADEMARK NAMES AND LOGOS OF FORTUNE INTERNATIONAL GROUP. THIS IS NOT AN OFFER TO SELL, OR SOLICITATION OF OFFERS TO BUY, IN STATES WHERE SUCH OFFER OR SOLICITATION CANNOT BE MADE. All depictions of appliances, counters, soffits, floor coverings, accessories, furniture, fixtures, and all other items of decoration are strictly for illustrative and display purposes only and is intended to act as an example to assist purchasers in visualizing a fully furnished unit. Such depictions should not be relied upon as a representation of the final product. All such items will not be included with the unit unless otherwise provided for in the purchase and sale documents and are subject to changes or substitution without notice. Stated square footages and dimensions are measured to the exterior boundaries of the exterior walls and the centerline of interior demising walls and in fact vary from the square footage and dimensions that would be determined by using the description and definition of the "Unit" set forth in the Declaration (which generally only includes the interior airspace between the perimeter walls and excludes all interior structural components and other common elements). This method is generally used in sales materials and is provided to allow a prospective buyer to compare the Units with units in other condominium projects that utilize the same method. Measurements of rooms set forth on this floor plan are generally taken at the farthest points of each given room (as if the room were a perfect rectangle), without regard for any cutouts or variations. Accordingly, the area of the actual room will typically be smaller than the product obtained by multiplying the stated length and width. All dimensions are estimates which will vary with actual construction, and all floor plans, specifications and other development plans are subject to change and will not necessarily accurately reflect the final plans and specifications for the development.

RESIDENCE B

LINE 02

1 BED | 1 BATH

INTERIOR 712 SF | 66 M²



1210 Brickell Avenue, Miami, FL 33131

Developed By
FORTUNE
INTERNATIONAL
GROUP

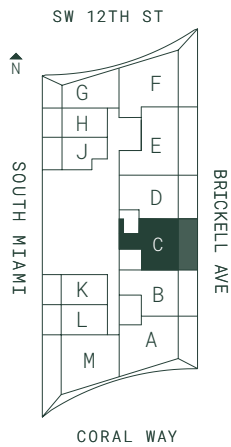
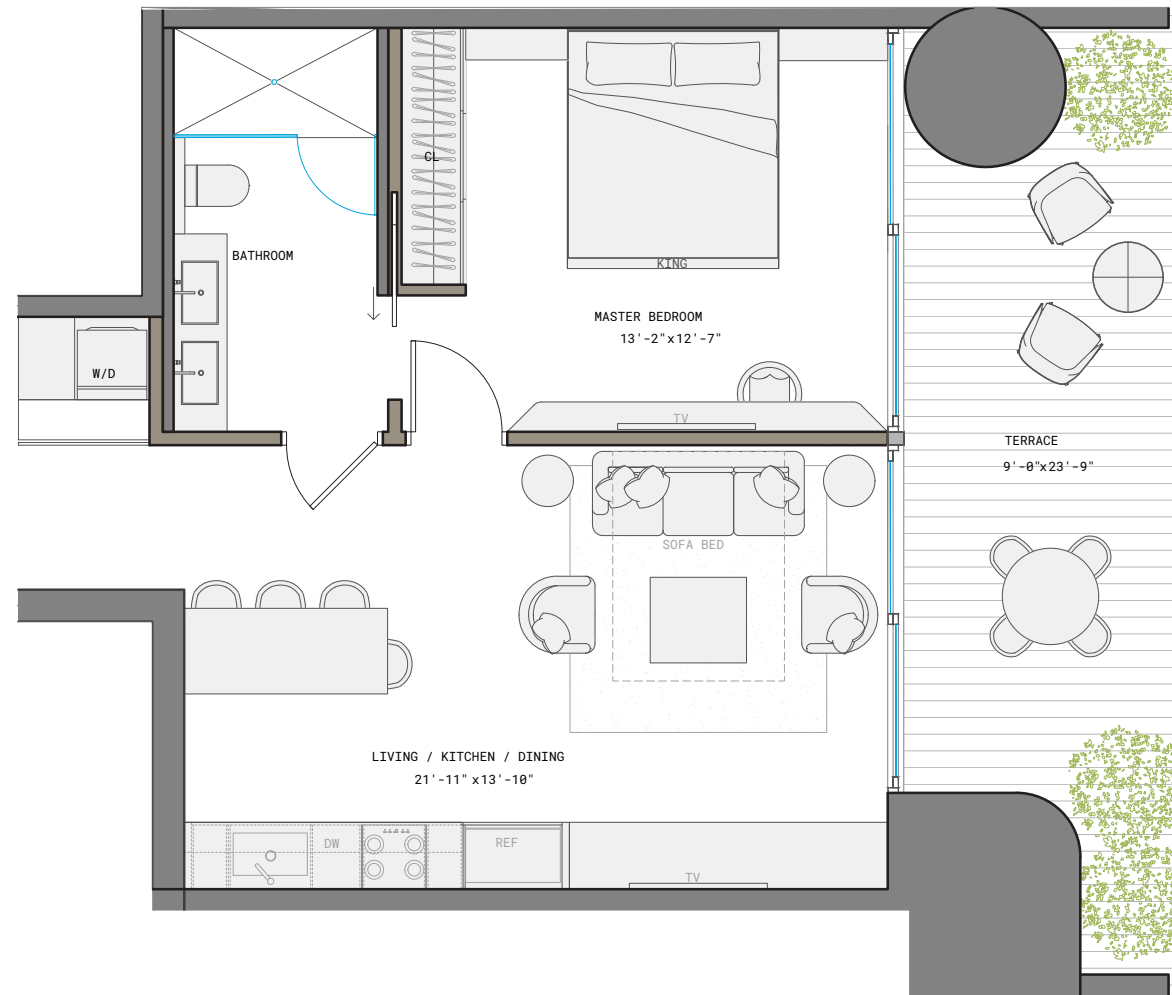
THIS PROJECT IS NOT OWNED, DESIGNED, DEVELOPED, OFFERED OR SOLD BY ORA BY CASA TUA LLC OR ITS AFFILIATES (COLLECTIVELY, "BRAND"). 1210 BRICKELL OWNER, LLC, THE DEVELOPER OF THE PROJECT OR ITS AFFILIATES (COLLECTIVELY, "DEVELOPER") USES THE BRAND'S TRADEMARKS PURSUANT TO A LICENSE AGREEMENT WITH THE BRAND, WHICH MAY BE TERMINATED OR REVOKED ACCORDING TO ITS TERMS. THE BRAND HAS NOT CONFIRMED THE ACCURACY OF, AND IS NOT RESPONSIBLE FOR, ANY OF THE STATEMENTS OR REPRESENTATIONS MADE HEREIN. ORAL REPRESENTATIONS CANNOT BE RELIED UPON AS CORRECTLY STATING REPRESENTATIONS OF THE DEVELOPER. FOR CORRECT REPRESENTATIONS, MAKE REFERENCE TO THE DOCUMENTS THAT ARE REQUIRED BY SECTION 718.503, FLORIDA STATUTES, TO BE FURNISHED BY A DEVELOPER TO A BUYER OR LESSEE. THE DEVELOPER IS 1210 BRICKELL, LLC, WHICH HAS A RIGHT TO USE THE TRADEMARK NAMES AND LOGOS OF FORTUNE INTERNATIONAL GROUP. THIS IS NOT AN OFFER TO SELL, OR SOLICITATION OF OFFERS TO BUY, IN STATES WHERE SUCH OFFER OR SOLICITATION CANNOT BE MADE. All depictions of appliances, counters, soffits, floor coverings, accessories, furniture, fixtures, and all other items of decoration are strictly for illustrative and display purposes only and is intended to act as an example to assist purchasers in visualizing a fully furnished unit. Such depictions should not be relied upon as a representation of the final product. All such items will not be included with the unit unless otherwise provided for in the purchase and sale documents and are subject to changes or substitution without notice. Stated square footages and dimensions are measured to the exterior boundaries of the exterior walls and the centerline of interior demising walls and in fact vary from the square footage and dimensions that would be determined by using the description and definition of the "Unit" set forth in the Declaration (which generally only includes the interior airspace between the perimeter walls and excludes all interior structural components and other common elements). This method is generally used in sales materials and is provided to allow a prospective buyer to compare the Units with units in other condominium projects that utilize the same method. Measurements of rooms set forth on this floor plan are generally taken at the farthest points of each given room (as if the room were a perfect rectangle), without regard for any cutouts or variations. Accordingly, the area of the actual room will typically be smaller than the product obtained by multiplying the stated length and width. All dimensions are estimates which will vary with actual construction, and all floor plans, specifications and other development plans are subject to change and will not necessarily accurately reflect the final plans and specifications for the development.

RESIDENCE C

LINE 03

1 BED | 1 BATH

INTERIOR 760 SF | 71 M²



1210 Brickell Avenue, Miami, FL 33131

Developed By
FORTUNE
INTERNATIONAL
GROUP

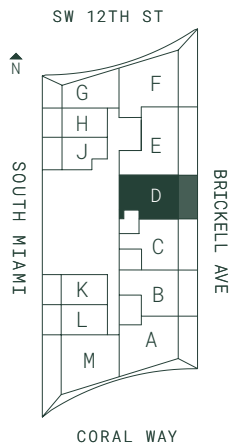
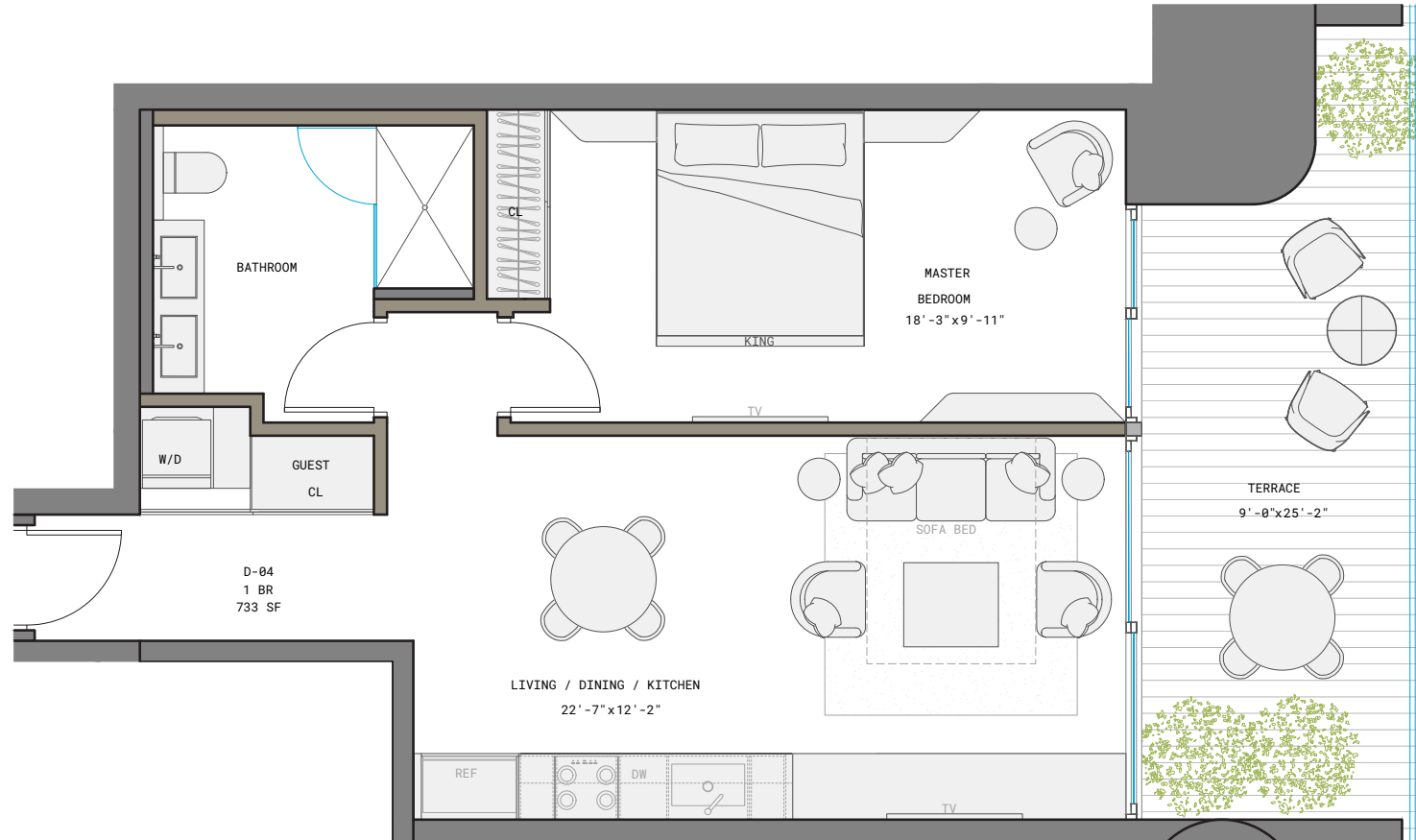
THIS PROJECT IS NOT OWNED, DESIGNED, DEVELOPED, OFFERED OR SOLD BY ORA BY CASA TUA LLC OR ITS AFFILIATES (COLLECTIVELY, "BRAND"). 1210 BRICKELL OWNER, LLC, THE DEVELOPER OF THE PROJECT OR ITS AFFILIATES (COLLECTIVELY, "DEVELOPER") USES THE BRAND'S TRADEMARKS PURSUANT TO A LICENSE AGREEMENT WITH THE BRAND, WHICH MAY BE TERMINATED OR REVOKED ACCORDING TO ITS TERMS. THE BRAND HAS NOT CONFIRMED THE ACCURACY OF, AND IS NOT RESPONSIBLE FOR, ANY OF THE STATEMENTS OR REPRESENTATIONS MADE HEREIN. ORAL REPRESENTATIONS CANNOT BE RELIED UPON AS CORRECTLY STATING REPRESENTATIONS OF THE DEVELOPER. FOR CORRECT REPRESENTATIONS, MAKE REFERENCE TO THE DOCUMENTS THAT ARE REQUIRED BY SECTION 718.503, FLORIDA STATUTES, TO BE FURNISHED BY A DEVELOPER TO A BUYER OR LESSEE. THE DEVELOPER IS 1210 BRICKELL, LLC, WHICH HAS A RIGHT TO USE THE TRADEMARK NAMES AND LOGOS OF FORTUNE INTERNATIONAL GROUP. THIS IS NOT AN OFFER TO SELL, OR SOLICITATION OF OFFERS TO BUY, IN STATES WHERE SUCH OFFER OR SOLICITATION CANNOT BE MADE. All depictions of appliances, counters, soffits, floor coverings, accessories, furniture, fixtures, and all other items of decoration are strictly for illustrative and display purposes only and is intended to act as an example to assist purchasers in visualizing a fully furnished unit. Such depictions should not be relied upon as a representation of the final product. All such items will not be included with the unit unless otherwise provided for in the purchase and sale documents and are subject to changes or substitution without notice. Stated square footages and dimensions are measured to the exterior boundaries of the exterior walls and the centerline of interior demising walls and in fact vary from the square footage and dimensions that would be determined by using the description and definition of the "Unit" set forth in the Declaration (which generally only includes the interior airspace between the perimeter walls and excludes all interior structural components and other common elements). This method is generally used in sales materials and is provided to allow a prospective buyer to compare the Units with units in other condominium projects that utilize the same method. Measurements of rooms set forth on this floor plan are generally taken at the farthest points of each given room (as if the room were a perfect rectangle), without regard for any cutouts or variations. Accordingly, the area of the actual room will typically be smaller than the product obtained by multiplying the stated length and width. All dimensions are estimates which will vary with actual construction, and all floor plans, specifications and other development plans are subject to change and will not necessarily accurately reflect the final plans and specifications for the development.

RESIDENCE D

LINE 04

1 BED | 1 BATH

INTERIOR 733 SF | 68 M²



1210 Brickell Avenue, Miami, FL 33131

Developed By
FORTUNE
INTERNATIONAL
GROUP

THIS PROJECT IS NOT OWNED, DESIGNED, DEVELOPED, OFFERED OR SOLD BY ORA BY CASA TUA LLC OR ITS AFFILIATES (COLLECTIVELY, "BRAND"). 1210 BRICKELL OWNER, LLC, THE DEVELOPER OF THE PROJECT OR ITS AFFILIATES (COLLECTIVELY, "DEVELOPER") USES THE BRAND'S TRADEMARKS PURSUANT TO A LICENSE AGREEMENT WITH THE BRAND, WHICH MAY BE TERMINATED OR REVOKED ACCORDING TO ITS TERMS. THE BRAND HAS NOT CONFIRMED THE ACCURACY OF, AND IS NOT RESPONSIBLE FOR, ANY OF THE STATEMENTS OR REPRESENTATIONS MADE HEREIN. ORAL REPRESENTATIONS CANNOT BE RELIED UPON AS CORRECTLY STATING REPRESENTATIONS OF THE DEVELOPER. FOR CORRECT REPRESENTATIONS, MAKE REFERENCE TO THE DOCUMENTS THAT ARE REQUIRED BY SECTION 718.503, FLORIDA STATUTES, TO BE FURNISHED BY A DEVELOPER TO A BUYER OR LESSEE. THE DEVELOPER IS 1210 BRICKELL, LLC, WHICH HAS A RIGHT TO USE THE TRADEMARK NAMES AND LOGOS OF FORTUNE INTERNATIONAL GROUP. THIS IS NOT AN OFFER TO SELL, OR SOLICITATION OF OFFERS TO BUY, IN STATES WHERE SUCH OFFER OR SOLICITATION CANNOT BE MADE. All depictions of appliances, counters, soffits, floor coverings, accessories, furniture, fixtures, and all other items of decoration are strictly for illustrative and display purposes only and is intended to act as an example to assist purchasers in visualizing a fully furnished unit. Such depictions should not be relied upon as a representation of the final product. All such items will not be included with the unit unless otherwise provided for in the purchase and sale documents and are subject to changes or substitution without notice. Stated square footages and dimensions are measured to the exterior boundaries of the exterior walls and the centerline of interior demising walls and in fact vary from the square footage and dimensions that would be determined by using the description and definition of the "Unit" set forth in the Declaration (which generally only includes the interior airspace between the perimeter walls and excludes all interior structural components and other common elements). This method is generally used in sales materials and is provided to allow a prospective buyer to compare the Units with units in other condominium projects that utilize the same method. Measurements of rooms set forth on this floor plan are generally taken at the farthest points of each given room (as if the room were a perfect rectangle), without regard for any cutouts or variations. Accordingly, the area of the actual room will typically be smaller than the product obtained by multiplying the stated length and width. All dimensions are estimates which will vary with actual construction, and all floor plans, specifications and other development plans are subject to change and will not necessarily accurately reflect the final plans and specifications for the development.

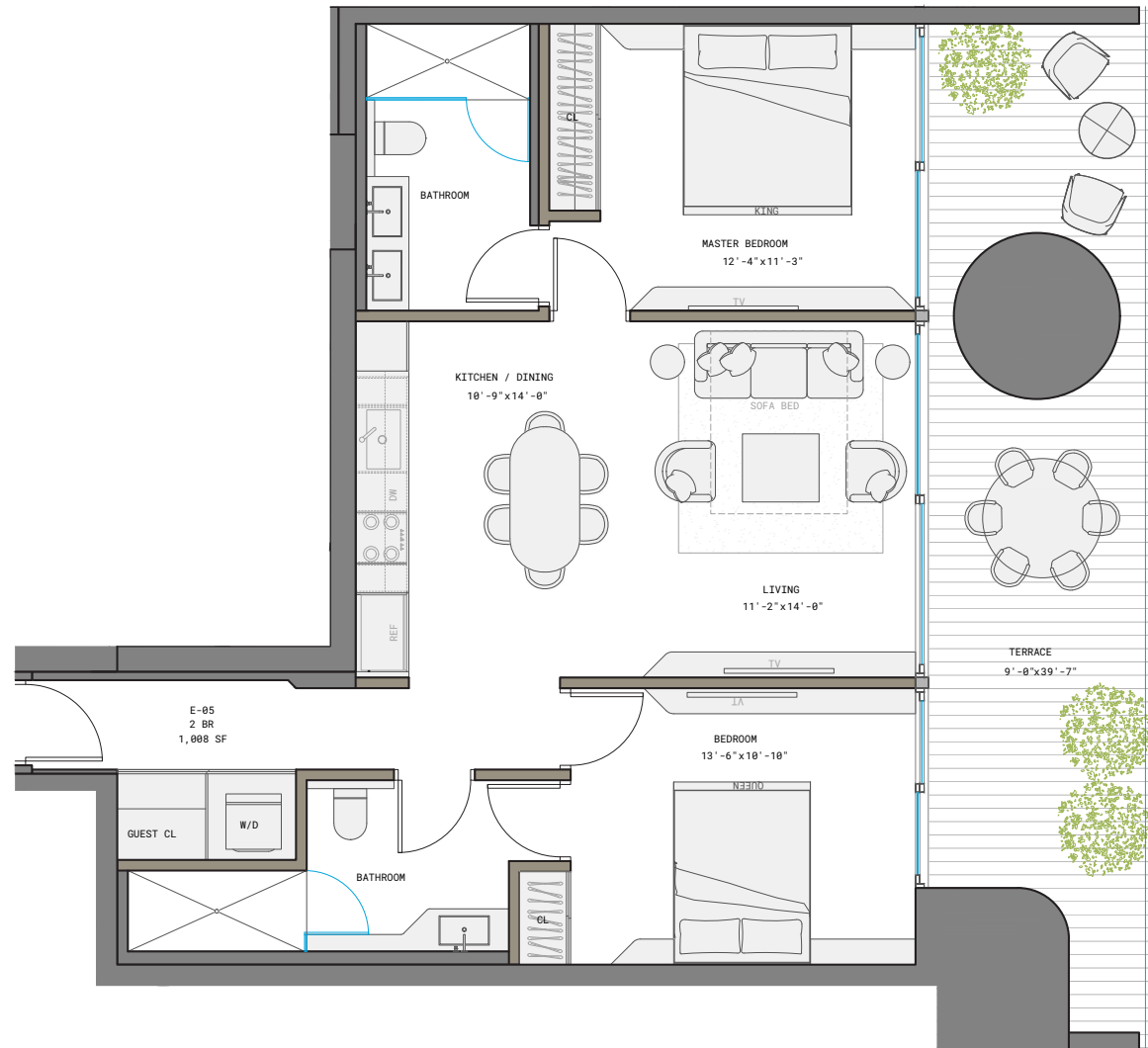
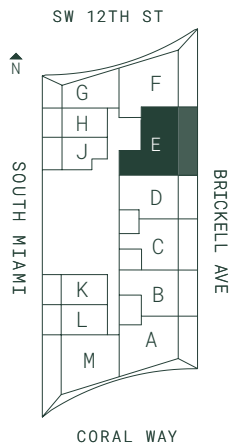


RESIDENCE E

LINE 05

2 BED | 2 BATH

INTERIOR 1,008 SF | 94 M²



1210 Brickell Avenue, Miami, FL 33131

Developed By
FORTUNE
INTERNATIONAL
GROUP

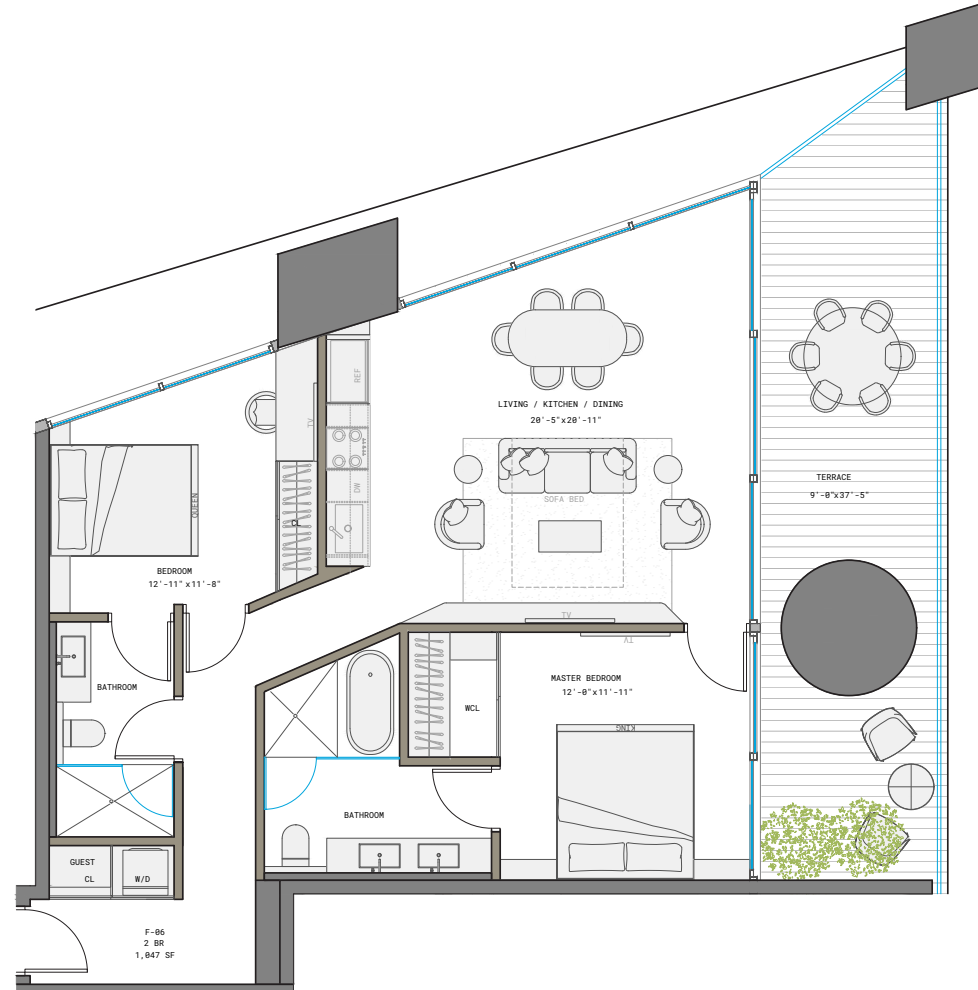
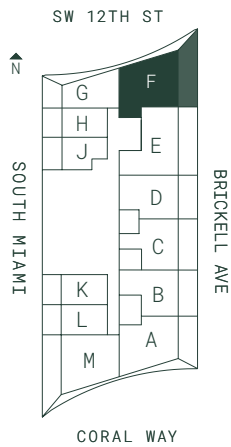
THIS PROJECT IS NOT OWNED, DESIGNED, DEVELOPED, OFFERED OR SOLD BY ORA BY CASA TUA LLC OR ITS AFFILIATES (COLLECTIVELY, "BRAND"). 1210 BRICKELL OWNER, LLC, THE DEVELOPER OF THE PROJECT OR ITS AFFILIATES (COLLECTIVELY, "DEVELOPER") USES THE BRAND'S TRADEMARKS PURSUANT TO A LICENSE AGREEMENT WITH THE BRAND, WHICH MAY BE TERMINATED OR REVOKED ACCORDING TO ITS TERMS. THE BRAND HAS NOT CONFIRMED THE ACCURACY OF, AND IS NOT RESPONSIBLE FOR, ANY OF THE STATEMENTS OR REPRESENTATIONS MADE HEREIN. ORAL REPRESENTATIONS CANNOT BE RELIED UPON AS CORRECTLY STATING REPRESENTATIONS OF THE DEVELOPER. FOR CORRECT REPRESENTATIONS, MAKE REFERENCE TO THE DOCUMENTS THAT ARE REQUIRED BY SECTION 718.503, FLORIDA STATUTES, TO BE FURNISHED BY A DEVELOPER TO A BUYER OR LESSEE. THE DEVELOPER IS 1210 BRICKELL, LLC, WHICH HAS A RIGHT TO USE THE TRADEMARK NAMES AND LOGOS OF FORTUNE INTERNATIONAL GROUP. THIS IS NOT AN OFFER TO SELL, OR SOLICITATION OF OFFERS TO BUY, IN STATES WHERE SUCH OFFER OR SOLICITATION CANNOT BE MADE. All depictions of appliances, counters, soffits, floor coverings, accessories, furniture, fixtures, and all other items of decoration are strictly for illustrative and display purposes only and is intended to act as an example to assist purchasers in visualizing a fully furnished unit. Such depictions should not be relied upon as a representation of the final product. All such items will not be included with the unit unless otherwise provided for in the purchase and sale documents and are subject to changes or substitution without notice. Stated square footages and dimensions are measured to the exterior boundaries of the exterior walls and the centerline of interior demising walls and in fact vary from the square footage and dimensions that would be determined by using the description and definition of the "Unit" set forth in the Declaration (which generally only includes the interior airspace between the perimeter walls and excludes all interior structural components and other common elements). This method is generally used in sales materials and is provided to allow a prospective buyer to compare the Units with units in other condominium projects that utilize the same method. Measurements of rooms set forth on this floor plan are generally taken at the farthest points of each given room (as if the room were a perfect rectangle), without regard for any cutouts or variations. Accordingly, the area of the actual room will typically be smaller than the product obtained by multiplying the stated length and width. All dimensions are estimates which will vary with actual construction, and all floor plans, specifications and other development plans are subject to change and will not necessarily accurately reflect the final plans and specifications for the development.

RESIDENCE F

LINE 06

2 BED | 2 BATH

INTERIOR 1,047 SF | 97 M²



1210 Brickell Avenue, Miami, FL 33131

Developed By
FORTUNE
INTERNATIONAL
GROUP

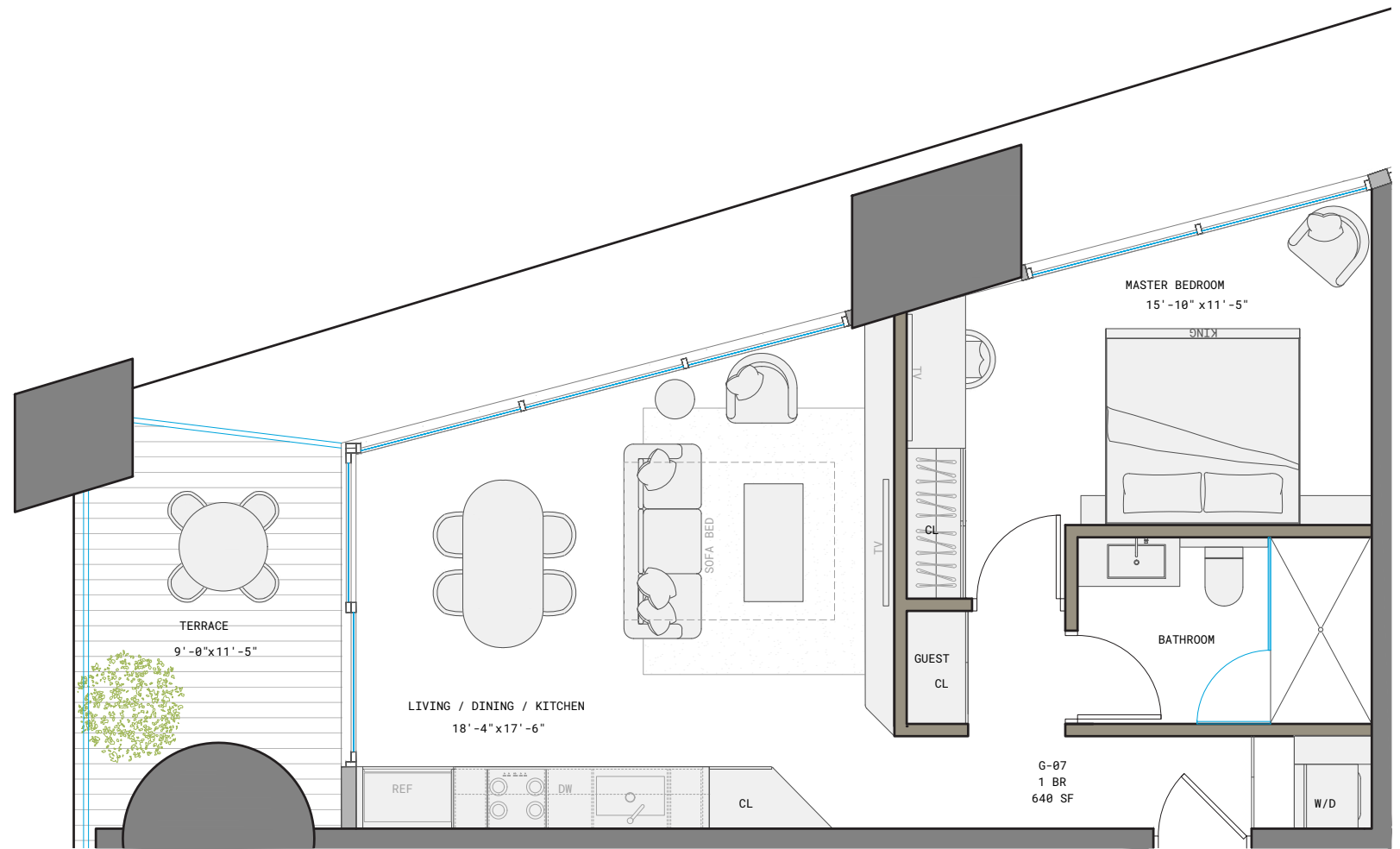
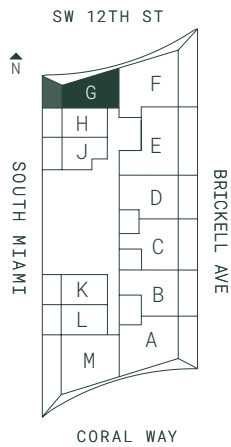
THIS PROJECT IS NOT OWNED, DESIGNED, DEVELOPED, OFFERED OR SOLD BY ORA BY CASA TUA LLC OR ITS AFFILIATES (COLLECTIVELY, "BRAND"). 1210 BRICKELL OWNER, LLC, THE DEVELOPER OF THE PROJECT OR ITS AFFILIATES (COLLECTIVELY, "DEVELOPER") USES THE BRAND'S TRADEMARKS PURSUANT TO A LICENSE AGREEMENT WITH THE BRAND, WHICH MAY BE TERMINATED OR REVOKED ACCORDING TO ITS TERMS. THE BRAND HAS NOT CONFIRMED THE ACCURACY OF, AND IS NOT RESPONSIBLE FOR, ANY OF THE STATEMENTS OR REPRESENTATIONS MADE HEREIN. ORAL REPRESENTATIONS CANNOT BE RELIED UPON AS CORRECTLY STATING REPRESENTATIONS OF THE DEVELOPER. FOR CORRECT REPRESENTATIONS, MAKE REFERENCE TO THE DOCUMENTS THAT ARE REQUIRED BY SECTION 718.503, FLORIDA STATUTES, TO BE FURNISHED BY A DEVELOPER TO A BUYER OR LESSEE. THE DEVELOPER IS 1210 BRICKELL, LLC, WHICH HAS A RIGHT TO USE THE TRADEMARK NAMES AND LOGOS OF FORTUNE INTERNATIONAL GROUP. THIS IS NOT AN OFFER TO SELL, OR SOLICITATION OF OFFERS TO BUY, IN STATES WHERE SUCH OFFER OR SOLICITATION CANNOT BE MADE. All depictions of appliances, counters, soffits, floor coverings, accessories, furniture, fixtures, and all other items of decoration are strictly for illustrative and display purposes only and is intended to act as an example to assist purchasers in visualizing a fully furnished unit. Such depictions should not be relied upon as a representation of the final product. All such items will not be included with the unit unless otherwise provided for in the purchase and sale documents and are subject to changes or substitution without notice. Stated square footages and dimensions are measured to the exterior boundaries of the exterior walls and the centerline of interior demising walls and in fact vary from the square footage and dimensions that would be determined by using the description and definition of the "Unit" set forth in the Declaration (which generally only includes the interior airspace between the perimeter walls and excludes all interior structural components and other common elements). This method is generally used in sales materials and is provided to allow a prospective buyer to compare the Units with units in other condominium projects that utilize the same method. Measurements of rooms set forth on this floor plan are generally taken at the farthest points of each given room (as if the room were a perfect rectangle), without regard for any cutouts or variations. Accordingly, the area of the actual room will typically be smaller than the product obtained by multiplying the stated length and width. All dimensions are estimates which will vary with actual construction, and all floor plans, specifications and other development plans are subject to change and will not necessarily accurately reflect the final plans and specifications for the development.

RESIDENCE G

LINE 07

1 BED | 1 BATH

INTERIOR 640 SF | 59 M²



G-07
1 BR
640 SF

1210 Brickell Avenue, Miami, FL 33131

Developed By
FORTUNE
INTERNATIONAL
GROUP

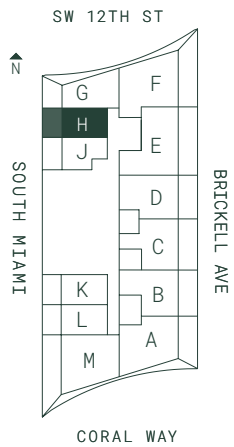
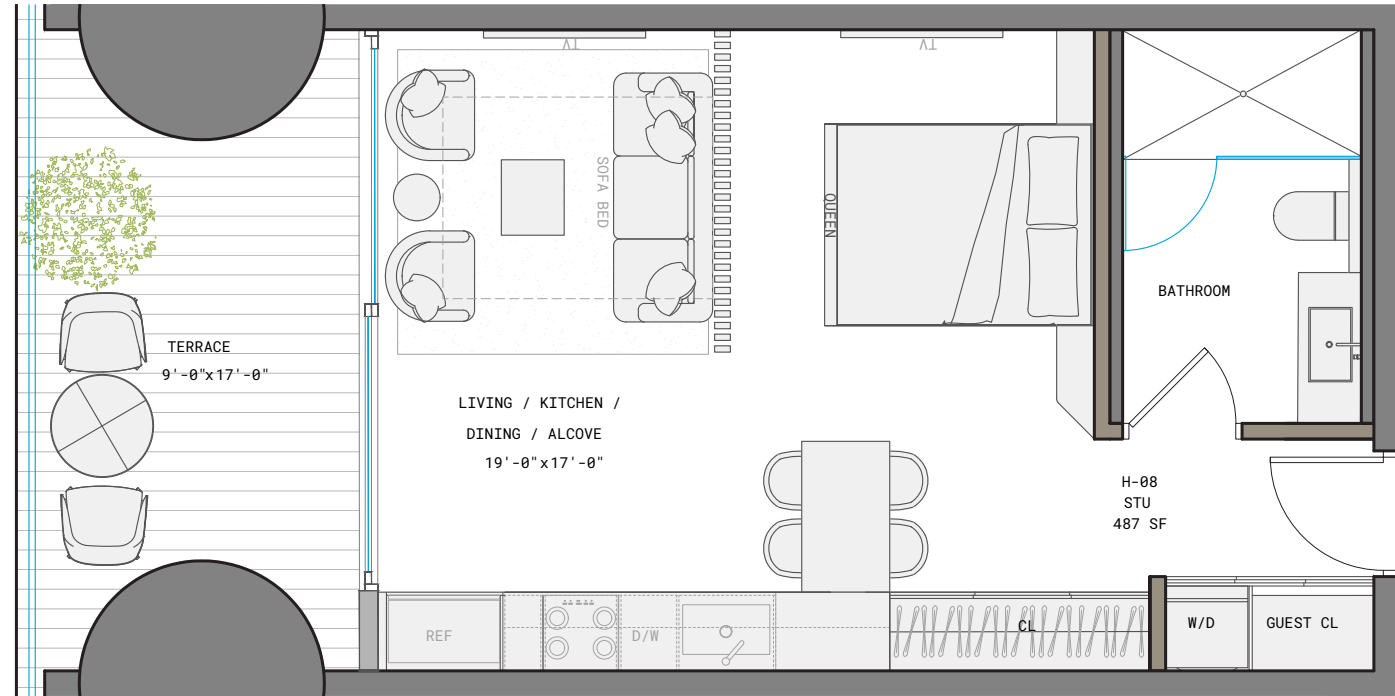
THIS PROJECT IS NOT OWNED, DESIGNED, DEVELOPED, OFFERED OR SOLD BY ORA BY CASA TUA LLC OR ITS AFFILIATES (COLLECTIVELY, "BRAND"). 1210 BRICKELL OWNER, LLC, THE DEVELOPER OF THE PROJECT OR ITS AFFILIATES (COLLECTIVELY, "DEVELOPER") USES THE BRAND'S TRADEMARKS PURSUANT TO A LICENSE AGREEMENT WITH THE BRAND, WHICH MAY BE TERMINATED OR REVOKED ACCORDING TO ITS TERMS. THE BRAND HAS NOT CONFIRMED THE ACCURACY OF, AND IS NOT RESPONSIBLE FOR, ANY OF THE STATEMENTS OR REPRESENTATIONS MADE HEREIN. ORAL REPRESENTATIONS CANNOT BE RELIED UPON AS CORRECTLY STATING REPRESENTATIONS OF THE DEVELOPER. FOR CORRECT REPRESENTATIONS, MAKE REFERENCE TO THE DOCUMENTS THAT ARE REQUIRED BY SECTION 718.503, FLORIDA STATUTES, TO BE FURNISHED BY A DEVELOPER TO A BUYER OR LESSEE. THE DEVELOPER IS 1210 BRICKELL, LLC, WHICH HAS A RIGHT TO USE THE TRADEMARK NAMES AND LOGOS OF FORTUNE INTERNATIONAL GROUP. THIS IS NOT AN OFFER TO SELL, OR SOLICITATION OF OFFERS TO BUY, IN STATES WHERE SUCH OFFER OR SOLICITATION CANNOT BE MADE. All depictions of appliances, counters, soffits, floor coverings, accessories, furniture, fixtures, and all other items of decoration are strictly for illustrative and display purposes only and is intended to act as an example to assist purchasers in visualizing a fully furnished unit. Such depictions should not be relied upon as a representation of the final product. All such items will not be included with the unit unless otherwise provided for in the purchase and sale documents and are subject to changes or substitution without notice. Stated square footages and dimensions are measured to the exterior boundaries of the exterior walls and the centerline of interior demising walls and in fact vary from the square footage and dimensions that would be determined by using the description and definition of the "Unit" set forth in the Declaration (which generally only includes the interior airspace between the perimeter walls and excludes all interior structural components and other common elements). This method is generally used in sales materials and is provided to allow a prospective buyer to compare the Units with units in other condominium projects that utilize the same method. Measurements of rooms set forth on this floor plan are generally taken at the farthest points of each given room (as if the room were a perfect rectangle), without regard for any cutouts or variations. Accordingly, the area of the actual room will typically be smaller than the product obtained by multiplying the stated length and width. All dimensions are estimates which will vary with actual construction, and all floor plans, specifications and other development plans are subject to change and will not necessarily accurately reflect the final plans and specifications for the development.

RESIDENCE H

LINE 08

STUDIO

INTERIOR 487 SF | 45 M²



1210 Brickell Avenue, Miami, FL 33131

Developed By
FORTUNE
INTERNATIONAL
GROUP

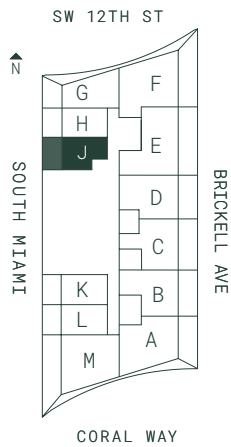
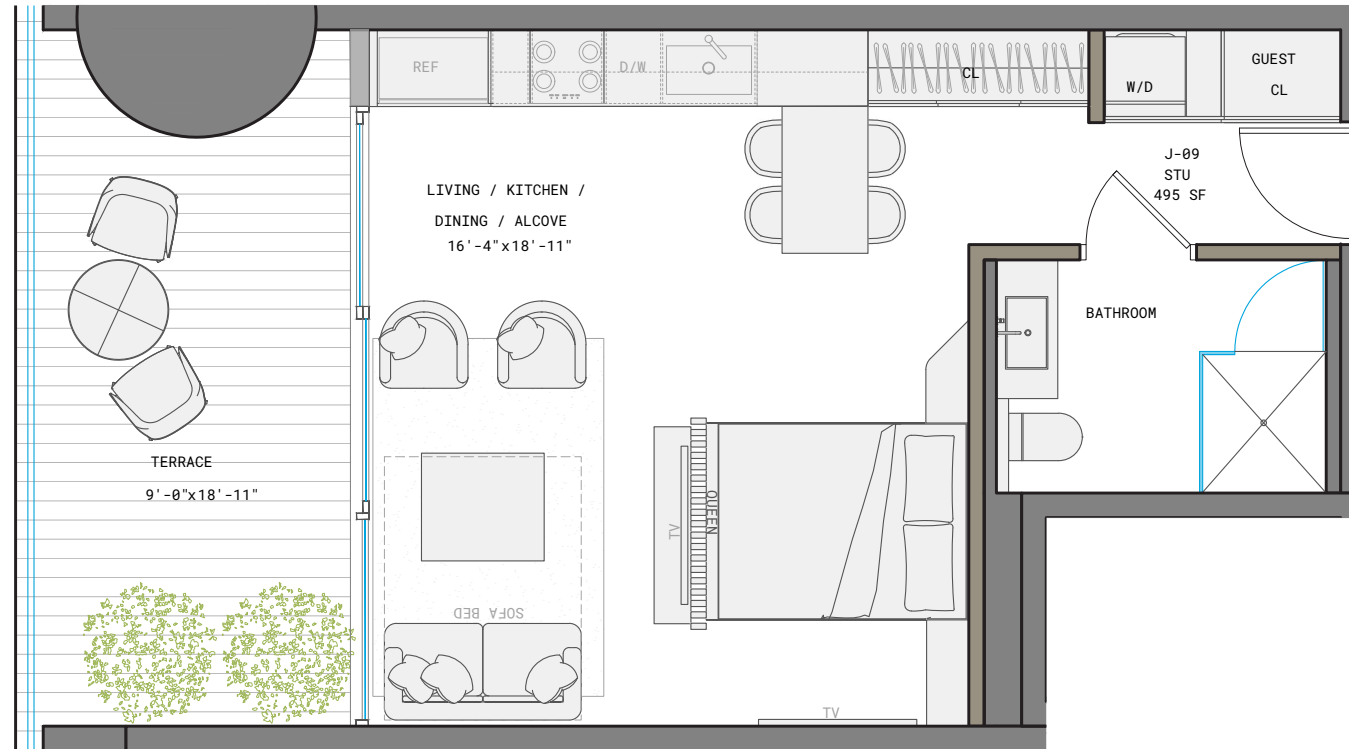
THIS PROJECT IS NOT OWNED, DESIGNED, DEVELOPED, OFFERED OR SOLD BY ORA BY CASA TUA LLC OR ITS AFFILIATES (COLLECTIVELY, "BRAND"). 1210 BRICKELL OWNER, LLC, THE DEVELOPER OF THE PROJECT OR ITS AFFILIATES (COLLECTIVELY, "DEVELOPER") USES THE BRAND'S TRADEMARKS PURSUANT TO A LICENSE AGREEMENT WITH THE BRAND, WHICH MAY BE TERMINATED OR REVOKED ACCORDING TO ITS TERMS. THE BRAND HAS NOT CONFIRMED THE ACCURACY OF, AND IS NOT RESPONSIBLE FOR, ANY OF THE STATEMENTS OR REPRESENTATIONS MADE HEREIN. ORAL REPRESENTATIONS CANNOT BE RELIED UPON AS CORRECTLY STATING REPRESENTATIONS OF THE DEVELOPER. FOR CORRECT REPRESENTATIONS, MAKE REFERENCE TO THE DOCUMENTS THAT ARE REQUIRED BY SECTION 718.503, FLORIDA STATUTES, TO BE FURNISHED BY A DEVELOPER TO A BUYER OR LESSEE. THE DEVELOPER IS 1210 BRICKELL, LLC, WHICH HAS A RIGHT TO USE THE TRADEMARK NAMES AND LOGOS OF FORTUNE INTERNATIONAL GROUP. THIS IS NOT AN OFFER TO SELL, OR SOLICITATION OF OFFERS TO BUY, IN STATES WHERE SUCH OFFER OR SOLICITATION CANNOT BE MADE. All depictions of appliances, counters, soffits, floor coverings, accessories, furniture, fixtures, and all other items of decoration are strictly for illustrative and display purposes only and is intended to act as an example to assist purchasers in visualizing a fully furnished unit. Such depictions should not be relied upon as a representation of the final product. All such items will not be included with the unit unless otherwise provided for in the purchase and sale documents and are subject to changes or substitution without notice. Stated square footages and dimensions are measured to the exterior boundaries of the exterior walls and the centerline of interior demising walls and in fact vary from the square footage and dimensions that would be determined by using the description and definition of the "Unit" set forth in the Declaration (which generally only includes the interior airspace between the perimeter walls and excludes all interior structural components and other common elements). This method is generally used in sales materials and is provided to allow a prospective buyer to compare the Units with units in other condominium projects that utilize the same method. Measurements of rooms set forth on this floor plan are generally taken at the farthest points of each given room (as if the room were a perfect rectangle), without regard for any cutouts or variations. Accordingly, the area of the actual room will typically be smaller than the product obtained by multiplying the stated length and width. All dimensions are estimates which will vary with actual construction, and all floor plans, specifications and other development plans are subject to change and will not necessarily accurately reflect the final plans and specifications for the development.

RESIDENCE J

LINE 09

STUDIO

INTERIOR 495 SF | 46 M²



1210 Brickell Avenue, Miami, FL 33131

Developed By
FORTUNE
INTERNATIONAL
GROUP

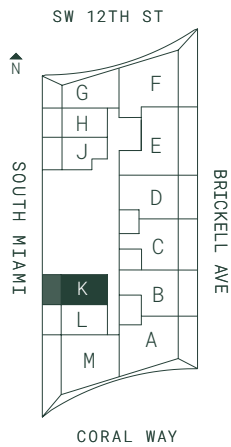
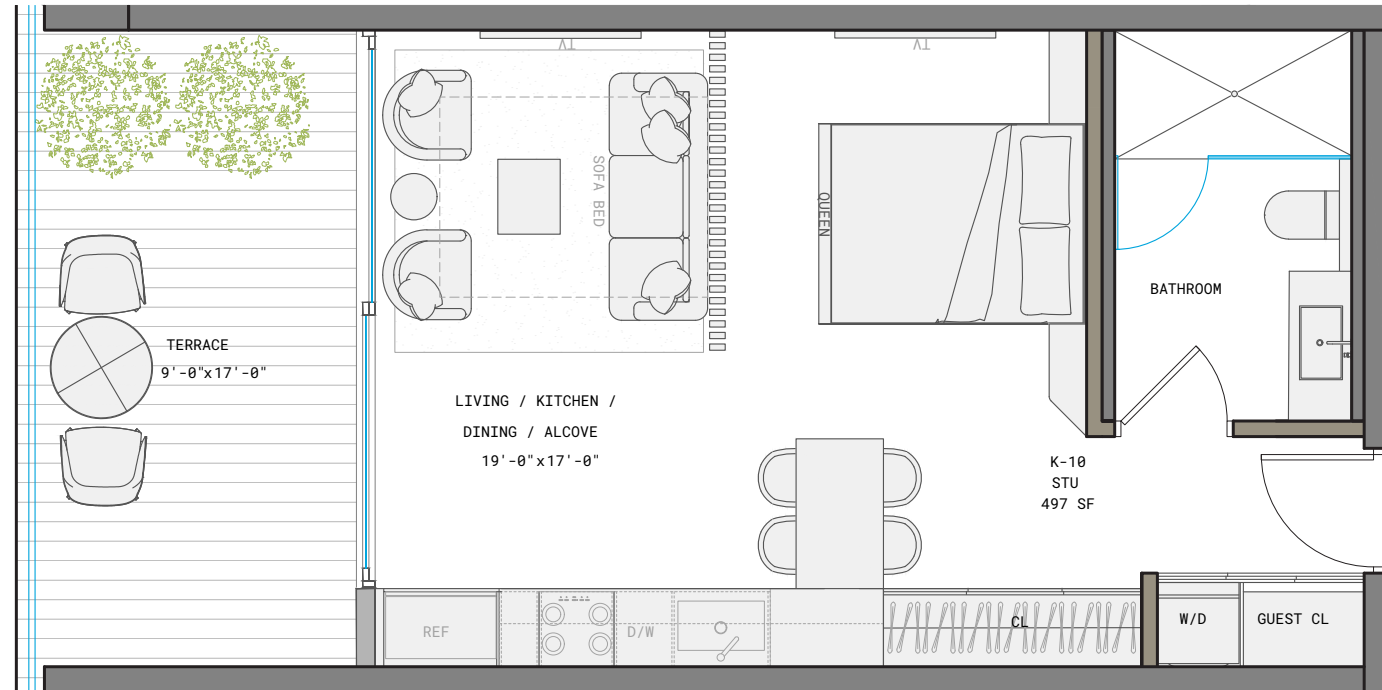
THIS PROJECT IS NOT OWNED, DESIGNED, DEVELOPED, OFFERED OR SOLD BY ORA BY CASA TUA LLC OR ITS AFFILIATES (COLLECTIVELY, "BRAND"). 1210 BRICKELL OWNER, LLC, THE DEVELOPER OF THE PROJECT OR ITS AFFILIATES (COLLECTIVELY, "DEVELOPER") USES THE BRAND'S TRADEMARKS PURSUANT TO A LICENSE AGREEMENT WITH THE BRAND, WHICH MAY BE TERMINATED OR REVOKED ACCORDING TO ITS TERMS. THE BRAND HAS NOT CONFIRMED THE ACCURACY OF, AND IS NOT RESPONSIBLE FOR, ANY OF THE STATEMENTS OR REPRESENTATIONS MADE HEREIN. ORAL REPRESENTATIONS CANNOT BE RELIED UPON AS CORRECTLY STATING REPRESENTATIONS OF THE DEVELOPER. FOR CORRECT REPRESENTATIONS, MAKE REFERENCE TO THE DOCUMENTS THAT ARE REQUIRED BY SECTION 718.503, FLORIDA STATUTES, TO BE FURNISHED BY A DEVELOPER TO A BUYER OR LESSEE. THE DEVELOPER IS 1210 BRICKELL, LLC, WHICH HAS A RIGHT TO USE THE TRADEMARK NAMES AND LOGOS OF FORTUNE INTERNATIONAL GROUP. THIS IS NOT AN OFFER TO SELL, OR SOLICITATION OF OFFERS TO BUY, IN STATES WHERE SUCH OFFER OR SOLICITATION CANNOT BE MADE. All depictions of appliances, counters, soffits, floor coverings, accessories, furniture, fixtures, and all other items of decoration are strictly for illustrative and display purposes only and is intended to act as an example to assist purchasers in visualizing a fully furnished unit. Such depictions should not be relied upon as a representation of the final product. All such items will not be included with the unit unless otherwise provided for in the purchase and sale documents and are subject to changes or substitution without notice. Stated square footages and dimensions are measured to the exterior boundaries of the exterior walls and the centerline of interior demising walls and in fact vary from the square footage and dimensions that would be determined by using the description and definition of the "Unit" set forth in the Declaration (which generally only includes the interior airspace between the perimeter walls and excludes all interior structural components and other common elements). This method is generally used in sales materials and is provided to allow a prospective buyer to compare the Units with units in other condominium projects that utilize the same method. Measurements of rooms set forth on this floor plan are generally taken at the farthest points of each given room (as if the room were a perfect rectangle), without regard for any cutouts or variations. Accordingly, the area of the actual room will typically be smaller than the product obtained by multiplying the stated length and width. All dimensions are estimates which will vary with actual construction, and all floor plans, specifications and other development plans are subject to change and will not necessarily accurately reflect the final plans and specifications for the development.

RESIDENCE K

LINE 10

STUDIO

INTERIOR 497 SF | 46 M²



1210 Brickell Avenue, Miami, FL 33131

Developed By
FORTUNE
INTERNATIONAL
GROUP

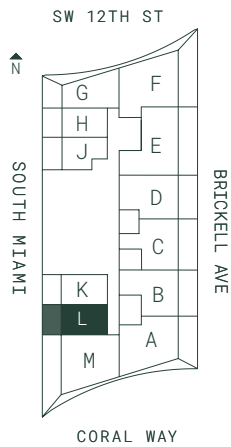
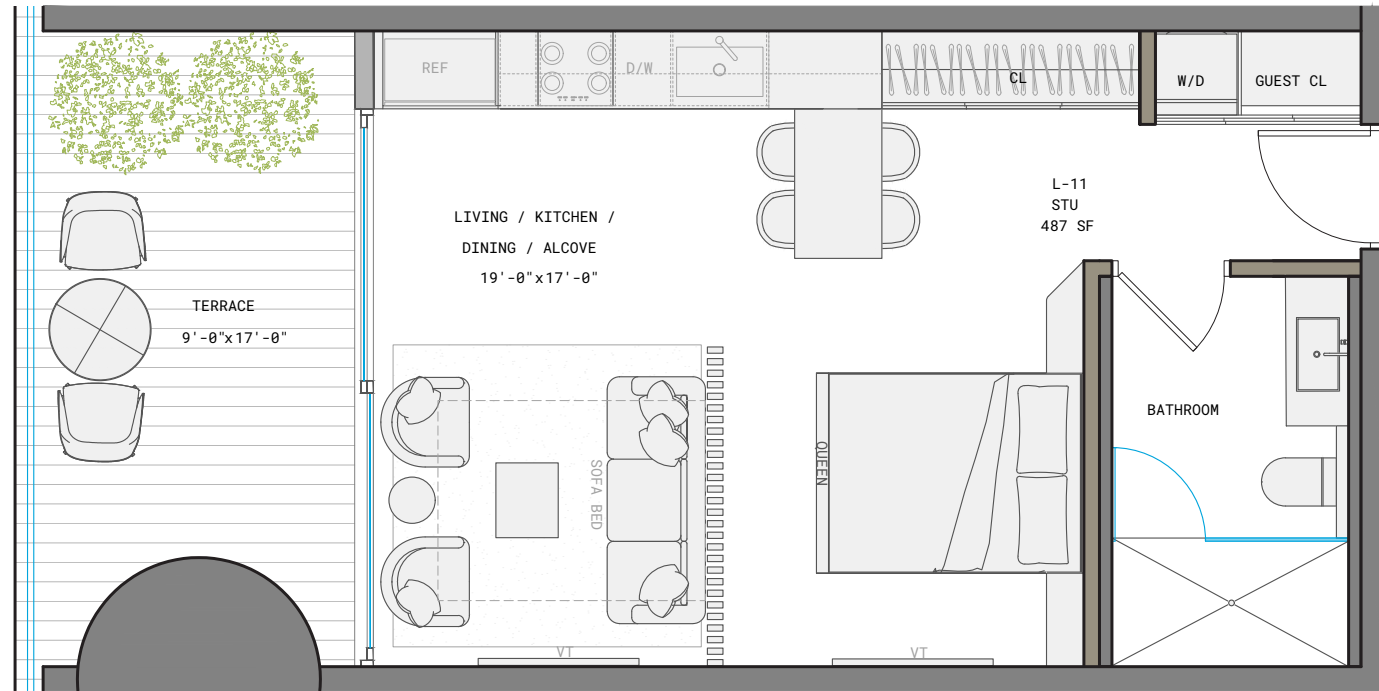
THIS PROJECT IS NOT OWNED, DESIGNED, DEVELOPED, OFFERED OR SOLD BY ORA BY CASA TUA LLC OR ITS AFFILIATES (COLLECTIVELY, "BRAND"). 1210 BRICKELL OWNER, LLC, THE DEVELOPER OF THE PROJECT OR ITS AFFILIATES (COLLECTIVELY, "DEVELOPER") USES THE BRAND'S TRADEMARKS PURSUANT TO A LICENSE AGREEMENT WITH THE BRAND, WHICH MAY BE TERMINATED OR REVOKED ACCORDING TO ITS TERMS. THE BRAND HAS NOT CONFIRMED THE ACCURACY OF, AND IS NOT RESPONSIBLE FOR, ANY OF THE STATEMENTS OR REPRESENTATIONS MADE HEREIN. ORAL REPRESENTATIONS CANNOT BE RELIED UPON AS CORRECTLY STATING REPRESENTATIONS OF THE DEVELOPER. FOR CORRECT REPRESENTATIONS, MAKE REFERENCE TO THE DOCUMENTS THAT ARE REQUIRED BY SECTION 718.503, FLORIDA STATUTES, TO BE FURNISHED BY A DEVELOPER TO A BUYER OR LESSEE. THE DEVELOPER IS 1210 BRICKELL, LLC, WHICH HAS A RIGHT TO USE THE TRADEMARK NAMES AND LOGOS OF FORTUNE INTERNATIONAL GROUP. THIS IS NOT AN OFFER TO SELL, OR SOLICITATION OF OFFERS TO BUY, IN STATES WHERE SUCH OFFER OR SOLICITATION CANNOT BE MADE. All depictions of appliances, counters, soffits, floor coverings, accessories, furniture, fixtures, and all other items of decoration are strictly for illustrative and display purposes only and is intended to act as an example to assist purchasers in visualizing a fully furnished unit. Such depictions should not be relied upon as a representation of the final product. All such items will not be included with the unit unless otherwise provided for in the purchase and sale documents and are subject to changes or substitution without notice. Stated square footages and dimensions are measured to the exterior boundaries of the exterior walls and the centerline of interior demising walls and in fact vary from the square footage and dimensions that would be determined by using the description and definition of the "Unit" set forth in the Declaration (which generally only includes the interior airspace between the perimeter walls and excludes all interior structural components and other common elements). This method is generally used in sales materials and is provided to allow a prospective buyer to compare the Units with units in other condominium projects that utilize the same method. Measurements of rooms set forth on this floor plan are generally taken at the farthest points of each given room (as if the room were a perfect rectangle), without regard for any cutouts or variations. Accordingly, the area of the actual room will typically be smaller than the product obtained by multiplying the stated length and width. All dimensions are estimates which will vary with actual construction, and all floor plans, specifications and other development plans are subject to change and will not necessarily accurately reflect the final plans and specifications for the development.

RESIDENCE L

LINE 11

STUDIO

INTERIOR 487 SF | 45 M²



1210 Brickell Avenue, Miami, FL 33131

Developed By
FORTUNE
INTERNATIONAL
GROUP

THIS PROJECT IS NOT OWNED, DESIGNED, DEVELOPED, OFFERED OR SOLD BY ORA BY CASA TUA LLC OR ITS AFFILIATES (COLLECTIVELY, "BRAND"). 1210 BRICKELL OWNER, LLC, THE DEVELOPER OF THE PROJECT OR ITS AFFILIATES (COLLECTIVELY, "DEVELOPER") USES THE BRAND'S TRADEMARKS PURSUANT TO A LICENSE AGREEMENT WITH THE BRAND, WHICH MAY BE TERMINATED OR REVOKED ACCORDING TO ITS TERMS. THE BRAND HAS NOT CONFIRMED THE ACCURACY OF, AND IS NOT RESPONSIBLE FOR, ANY OF THE STATEMENTS OR REPRESENTATIONS MADE HEREIN. ORAL REPRESENTATIONS CANNOT BE RELIED UPON AS CORRECTLY STATING REPRESENTATIONS OF THE DEVELOPER. FOR CORRECT REPRESENTATIONS, MAKE REFERENCE TO THE DOCUMENTS THAT ARE REQUIRED BY SECTION 718.503, FLORIDA STATUTES, TO BE FURNISHED BY A DEVELOPER TO A BUYER OR LESSEE. THE DEVELOPER IS 1210 BRICKELL, LLC, WHICH HAS A RIGHT TO USE THE TRADEMARK NAMES AND LOGOS OF FORTUNE INTERNATIONAL GROUP. THIS IS NOT AN OFFER TO SELL, OR SOLICITATION OF OFFERS TO BUY, IN STATES WHERE SUCH OFFER OR SOLICITATION CANNOT BE MADE. All depictions of appliances, counters, soffits, floor coverings, accessories, furniture, fixtures, and all other items of decoration are strictly for illustrative and display purposes only and is intended to act as an example to assist purchasers in visualizing a fully furnished unit. Such depictions should not be relied upon as a representation of the final product. All such items will not be included with the unit unless otherwise provided for in the purchase and sale documents and are subject to changes or substitution without notice. Stated square footages and dimensions are measured to the exterior boundaries of the exterior walls and the centerline of interior demising walls and in fact vary from the square footage and dimensions that would be determined by using the description and definition of the "Unit" set forth in the Declaration (which generally only includes the interior airspace between the perimeter walls and excludes all interior structural components and other common elements). This method is generally used in sales materials and is provided to allow a prospective buyer to compare the Units with units in other condominium projects that utilize the same method. Measurements of rooms set forth on this floor plan are generally taken at the farthest points of each given room (as if the room were a perfect rectangle), without regard for any cutouts or variations. Accordingly, the area of the actual room will typically be smaller than the product obtained by multiplying the stated length and width. All dimensions are estimates which will vary with actual construction, and all floor plans, specifications and other development plans are subject to change and will not necessarily accurately reflect the final plans and specifications for the development.

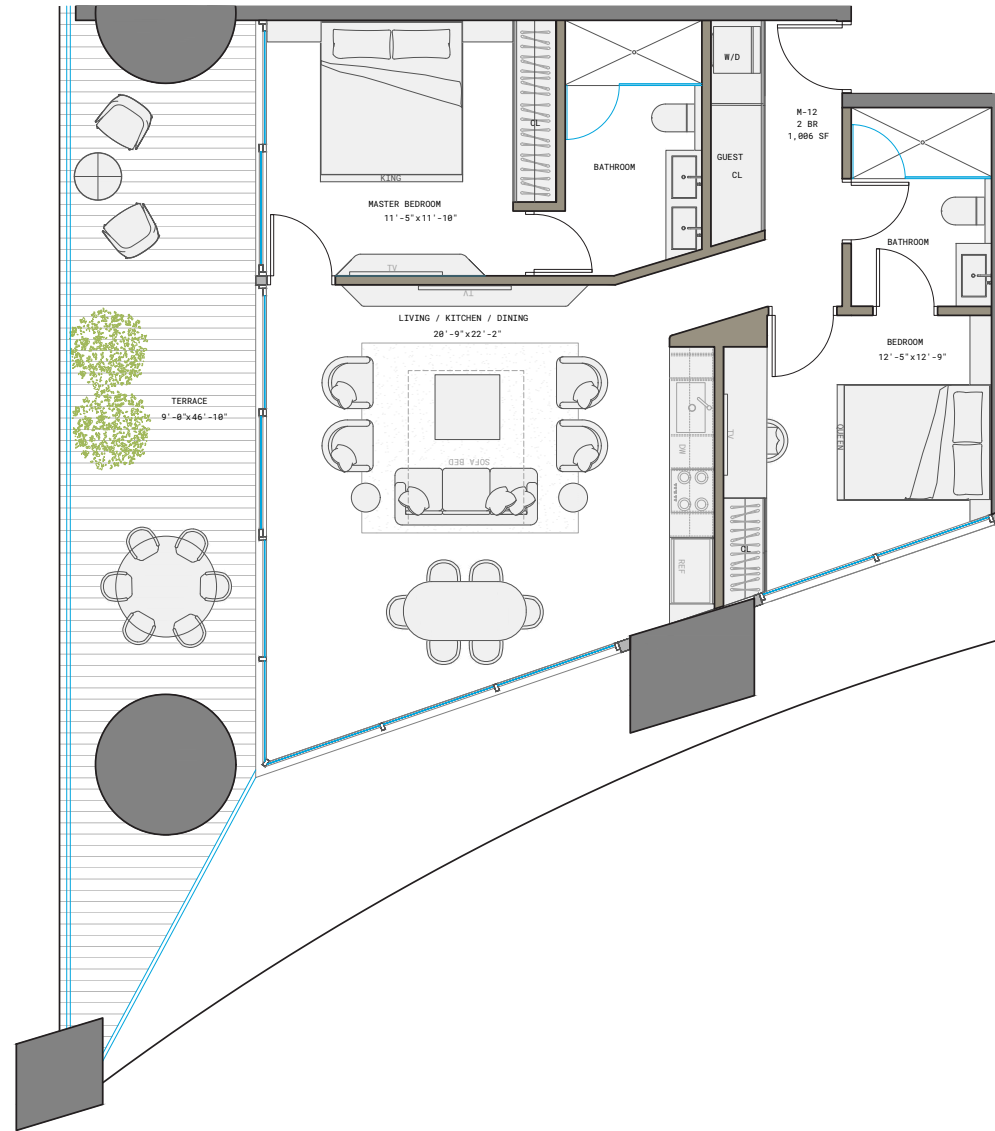
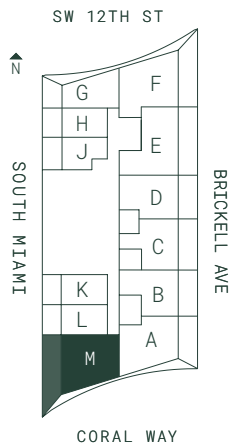


RESIDENCE M

LINE 12

2 BED | 2 BATH

INTERIOR 1,006 SF | 93 M²



1210 Brickell Avenue, Miami, FL 33131

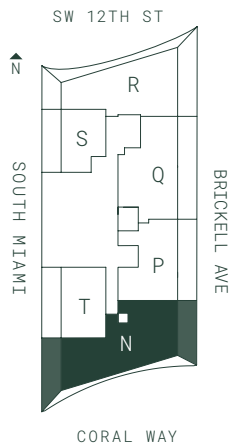
Developed By
FORTUNE
INTERNATIONAL
GROUP

THIS PROJECT IS NOT OWNED, DESIGNED, DEVELOPED, OFFERED OR SOLD BY ORA BY CASA TUA LLC OR ITS AFFILIATES (COLLECTIVELY, "BRAND"). 1210 BRICKELL OWNER, LLC, THE DEVELOPER OF THE PROJECT OR ITS AFFILIATES (COLLECTIVELY, "DEVELOPER") USES THE BRAND'S TRADEMARKS PURSUANT TO A LICENSE AGREEMENT WITH THE BRAND, WHICH MAY BE TERMINATED OR REVOKED ACCORDING TO ITS TERMS. THE BRAND HAS NOT CONFIRMED THE ACCURACY OF, AND IS NOT RESPONSIBLE FOR, ANY OF THE STATEMENTS OR REPRESENTATIONS MADE HEREIN. ORAL REPRESENTATIONS CANNOT BE RELIED UPON AS CORRECTLY STATING REPRESENTATIONS OF THE DEVELOPER. FOR CORRECT REPRESENTATIONS, MAKE REFERENCE TO THE DOCUMENTS THAT ARE REQUIRED BY SECTION 718.503, FLORIDA STATUTES, TO BE FURNISHED BY A DEVELOPER TO A BUYER OR LESSEE. THE DEVELOPER IS 1210 BRICKELL, LLC, WHICH HAS A RIGHT TO USE THE TRADEMARK NAMES AND LOGOS OF FORTUNE INTERNATIONAL GROUP. THIS IS NOT AN OFFER TO SELL, OR SOLICITATION OF OFFERS TO BUY, IN STATES WHERE SUCH OFFER OR SOLICITATION CANNOT BE MADE. All depictions of appliances, counters, soffits, floor coverings, accessories, furniture, fixtures, and all other items of decoration are strictly for illustrative and display purposes only and is intended to act as an example to assist purchasers in visualizing a fully furnished unit. Such depictions should not be relied upon as a representation of the final product. All such items will not be included with the unit unless otherwise provided for in the purchase and sale documents and are subject to changes or substitution without notice. Stated square footages and dimensions are measured to the exterior boundaries of the exterior walls and the centerline of interior demising walls and in fact vary from the square footage and dimensions that would be determined by using the description and definition of the "Unit" set forth in the Declaration (which generally only includes the interior airspace between the perimeter walls and excludes all interior structural components and other common elements). This method is generally used in sales materials and is provided to allow a prospective buyer to compare the Units with units in other condominium projects that utilize the same method. Measurements of rooms set forth on this floor plan are generally taken at the farthest points of each given room (as if the room were a perfect rectangle), without regard for any cutouts or variations. Accordingly, the area of the actual room will typically be smaller than the product obtained by multiplying the stated length and width. All dimensions are estimates which will vary with actual construction, and all floor plans, specifications and other development plans are subject to change and will not necessarily accurately reflect the final plans and specifications for the development.



RESIDENCE N
LINE 1

4 BED + DEN | 4.5 BATH
INTERIOR 2,302 SF | 213 M²



1210 Brickell Avenue, Miami, FL 33131

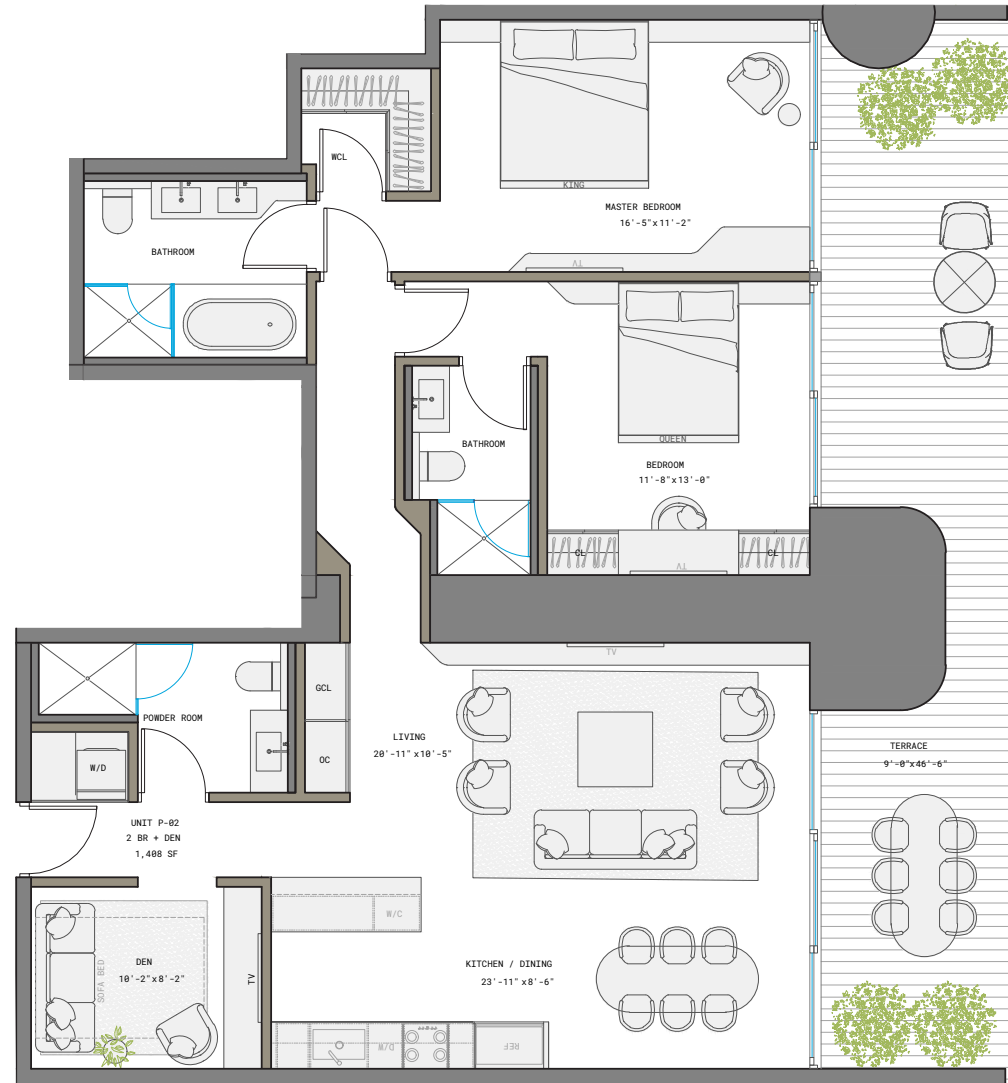
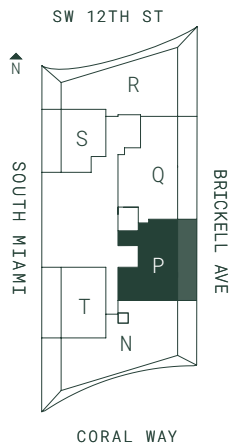
Developed By
FORTUNE
INTERNATIONAL
GROUP

THIS PROJECT IS NOT OWNED, DESIGNED, DEVELOPED, OFFERED OR SOLD BY ORA BY CASA TUA LLC OR ITS AFFILIATES (COLLECTIVELY, "BRAND"). 1210 BRICKELL OWNER, LLC, THE DEVELOPER OF THE PROJECT OR ITS AFFILIATES (COLLECTIVELY, "DEVELOPER") USES THE BRAND'S TRADEMARKS PURSUANT TO A LICENSE AGREEMENT WITH THE BRAND, WHICH MAY BE TERMINATED OR REVOKED ACCORDING TO ITS TERMS. THE BRAND HAS NOT CONFIRMED THE ACCURACY OF, AND IS NOT RESPONSIBLE FOR, ANY OF THE STATEMENTS OR REPRESENTATIONS MADE HEREIN. ORAL REPRESENTATIONS CANNOT BE RELIED UPON AS CORRECTLY STATING REPRESENTATIONS OF THE DEVELOPER. FOR CORRECT REPRESENTATIONS, MAKE REFERENCE TO THE DOCUMENTS THAT ARE REQUIRED BY SECTION 718.503, FLORIDA STATUTES, TO BE FURNISHED BY A DEVELOPER TO A BUYER OR LESSEE. THE DEVELOPER IS 1210 BRICKELL, LLC, WHICH HAS A RIGHT TO USE THE TRADEMARK NAMES AND LOGOS OF FORTUNE INTERNATIONAL GROUP. THIS IS NOT AN OFFER TO SELL, OR SOLICITATION OF OFFERS TO BUY, IN STATES WHERE SUCH OFFER OR SOLICITATION CANNOT BE MADE. All depictions of appliances, counters, soffits, floor coverings, accessories, furniture, fixtures, and all other items of decoration are strictly for illustrative and display purposes only and is intended to act as an example to assist purchasers in visualizing a fully furnished unit. Such depictions should not be relied upon as a representation of the final product. All such items will not be included with the unit unless otherwise provided for in the purchase and sale documents and are subject to changes or substitution without notice. Stated square footages and dimensions are measured to the exterior boundaries of the exterior walls and the centerline of interior demising walls and in fact vary from the square footage and dimensions that would be determined by using the description and definition of the "Unit" set forth in the Declaration (which generally only includes the interior airspace between the perimeter walls and excludes all interior structural components and other common elements). This method is generally used in sales materials and is provided to allow a prospective buyer to compare the Units with units in other condominium projects that utilize the same method. Measurements of rooms set forth on this floor plan are generally taken at the farthest points of each given room (as if the room were a perfect rectangle), without regard for any cutouts or variations. Accordingly, the area of the actual room will typically be smaller than the product obtained by multiplying the stated length and width. All dimensions are estimates which will vary with actual construction, and all floor plans, specifications and other development plans are subject to change and will not necessarily accurately reflect the final plans and specifications for the development.



RESIDENCE P
LINE 2

2 BED + DEN | 3 BATH
 INTERIOR 1,408 SF | 131 M²
 EXTERIOR 377 SF | 35 M²
TOTAL 1,785 SF | 166 M²



1210 Brickell Avenue, Miami, FL 33131

Developed By
FORTUNE
 INTERNATIONAL
 GROUP

THIS PROJECT IS NOT OWNED, DESIGNED, DEVELOPED, OFFERED OR SOLD BY ORA BY CASA TUA LLC OR ITS AFFILIATES (COLLECTIVELY, "BRAND"). 1210 BRICKELL OWNER, LLC, THE DEVELOPER OF THE PROJECT OR ITS AFFILIATES (COLLECTIVELY, "DEVELOPER") USES THE BRAND'S TRADEMARKS PURSUANT TO A LICENSE AGREEMENT WITH THE BRAND, WHICH MAY BE TERMINATED OR REVOKED ACCORDING TO ITS TERMS. THE BRAND HAS NOT CONFIRMED THE ACCURACY OF, AND IS NOT RESPONSIBLE FOR, ANY OF THE STATEMENTS OR REPRESENTATIONS MADE HEREIN. ORAL REPRESENTATIONS CANNOT BE RELIED UPON AS CORRECTLY STATING REPRESENTATIONS OF THE DEVELOPER. FOR CORRECT REPRESENTATIONS, MAKE REFERENCE TO THE DOCUMENTS THAT ARE REQUIRED BY SECTION 718.503, FLORIDA STATUTES, TO BE FURNISHED BY A DEVELOPER TO A BUYER OR LESSEE. THE DEVELOPER IS 1210 BRICKELL, LLC, WHICH HAS A RIGHT TO USE THE TRADEMARK NAMES AND LOGOS OF FORTUNE INTERNATIONAL GROUP. THIS IS NOT AN OFFER TO SELL, OR SOLICITATION OF OFFERS TO BUY, IN STATES WHERE SUCH OFFER OR SOLICITATION CANNOT BE MADE. All depictions of appliances, counters, soffits, floor coverings, accessories, furniture, fixtures, and all other items of decoration are strictly for illustrative and display purposes only and is intended to act as an example to assist purchasers in visualizing a fully furnished unit. Such depictions should not be relied upon as a representation of the final product. All such items will not be included with the unit unless otherwise provided for in the purchase and sale documents and are subject to changes or substitution without notice. Stated square footages and dimensions are measured to the exterior boundaries of the exterior walls and the centerline of interior demising walls and in fact vary from the square footage and dimensions that would be determined by using the description and definition of the "Unit" set forth in the Declaration (which generally only includes the interior airspace between the perimeter walls and excludes all interior structural components and other common elements). This method is generally used in sales materials and is provided to allow a prospective buyer to compare the Units with units in other condominium projects that utilize the same method. Measurements of rooms set forth on this floor plan are generally taken at the farthest points of each given room (as if the room were a perfect rectangle), without regard for any cutouts or variations. Accordingly, the area of the actual room will typically be smaller than the product obtained by multiplying the stated length and width. All dimensions are estimates which will vary with actual construction, and all floor plans, specifications and other development plans are subject to change and will not necessarily accurately reflect the final plans and specifications for the development.

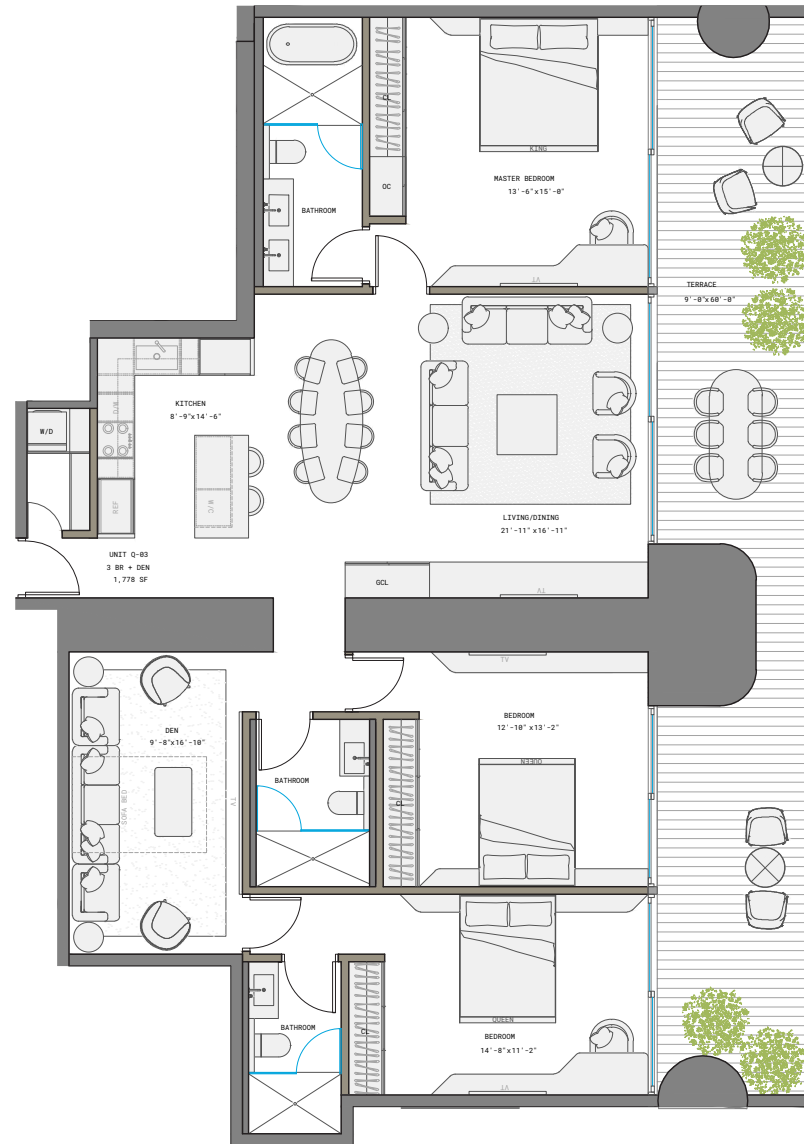
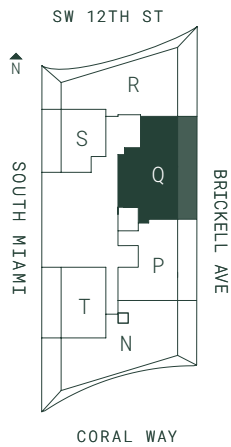


RESIDENCE Q

LINE 3

3 BED + DEN | 3.5 BATH

INTERIOR 1,778 SF | 165 M²



1210 Brickell Avenue, Miami, FL 33131

Developed By
FORTUNE
INTERNATIONAL
GROUP

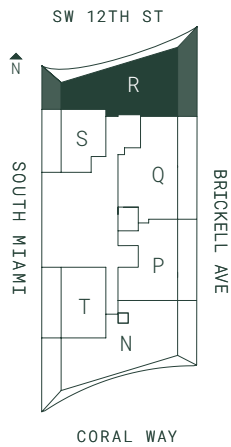
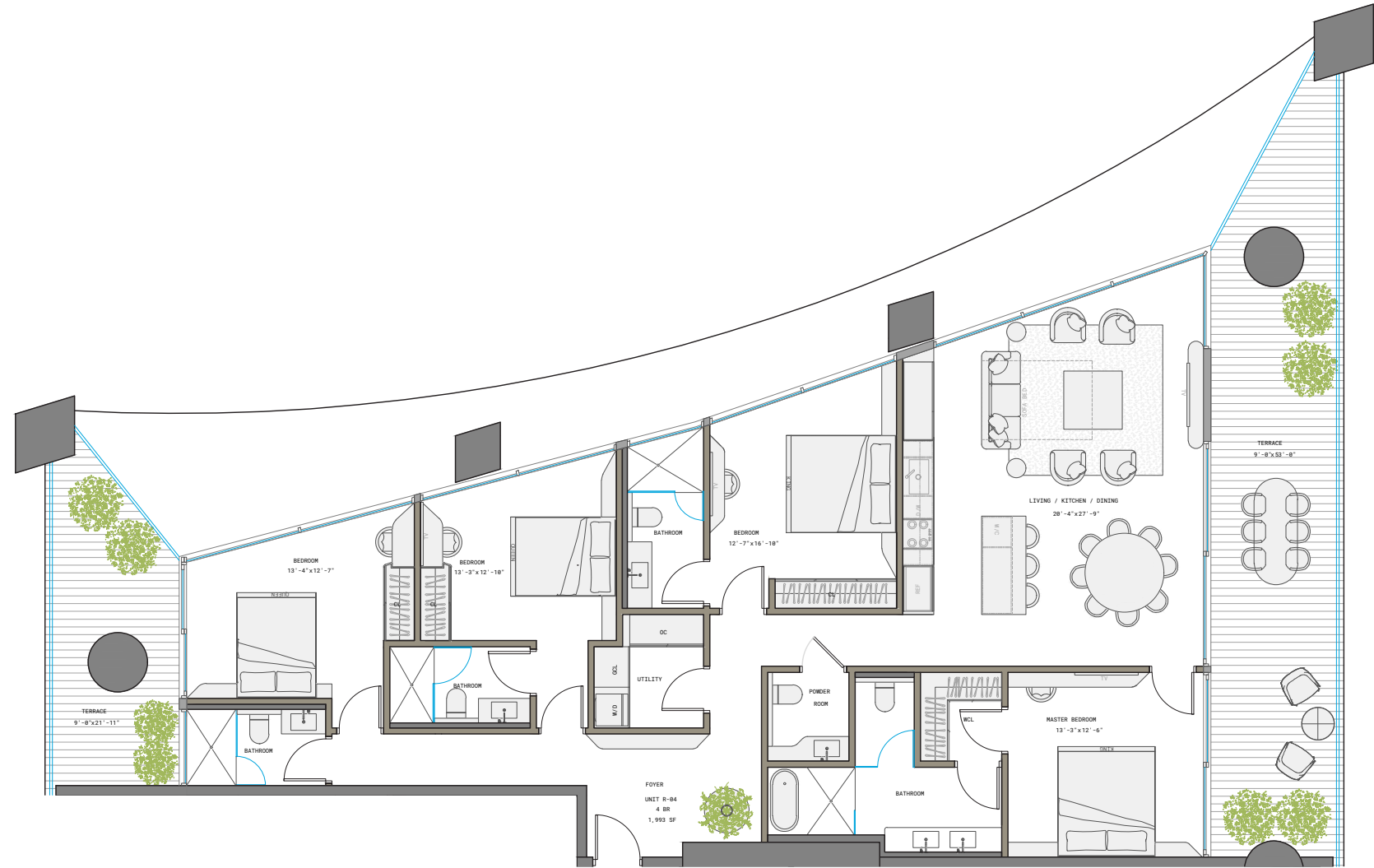
THIS PROJECT IS NOT OWNED, DESIGNED, DEVELOPED, OFFERED OR SOLD BY ORA BY CASA TUA LLC OR ITS AFFILIATES (COLLECTIVELY, "BRAND"). 1210 BRICKELL OWNER, LLC, THE DEVELOPER OF THE PROJECT OR ITS AFFILIATES (COLLECTIVELY, "DEVELOPER") USES THE BRAND'S TRADEMARKS PURSUANT TO A LICENSE AGREEMENT WITH THE BRAND, WHICH MAY BE TERMINATED OR REVOKED ACCORDING TO ITS TERMS. THE BRAND HAS NOT CONFIRMED THE ACCURACY OF, AND IS NOT RESPONSIBLE FOR, ANY OF THE STATEMENTS OR REPRESENTATIONS MADE HEREIN. ORAL REPRESENTATIONS CANNOT BE RELIED UPON AS CORRECTLY STATING REPRESENTATIONS OF THE DEVELOPER. FOR CORRECT REPRESENTATIONS, MAKE REFERENCE TO THE DOCUMENTS THAT ARE REQUIRED BY SECTION 718.503, FLORIDA STATUTES, TO BE FURNISHED BY A DEVELOPER TO A BUYER OR LESSEE. THE DEVELOPER IS 1210 BRICKELL, LLC, WHICH HAS A RIGHT TO USE THE TRADEMARK NAMES AND LOGOS OF FORTUNE INTERNATIONAL GROUP. THIS IS NOT AN OFFER TO SELL, OR SOLICITATION OF OFFERS TO BUY, IN STATES WHERE SUCH OFFER OR SOLICITATION CANNOT BE MADE. All depictions of appliances, counters, soffits, floor coverings, accessories, furniture, fixtures, and all other items of decoration are strictly for illustrative and display purposes only and is intended to act as an example to assist purchasers in visualizing a fully furnished unit. Such depictions should not be relied upon as a representation of the final product. All such items will not be included with the unit unless otherwise provided for in the purchase and sale documents and are subject to changes or substitution without notice. Stated square footages and dimensions are measured to the exterior boundaries of the exterior walls and the centerline of interior demising walls and in fact vary from the square footage and dimensions that would be determined by using the description and definition of the "Unit" set forth in the Declaration (which generally only includes the interior airspace between the perimeter walls and excludes all interior structural components and other common elements). This method is generally used in sales materials and is provided to allow a prospective buyer to compare the Units with units in other condominium projects that utilize the same method. Measurements of rooms set forth on this floor plan are generally taken at the farthest points of each given room (as if the room were a perfect rectangle), without regard for any cutouts or variations. Accordingly, the area of the actual room will typically be smaller than the product obtained by multiplying the stated length and width. All dimensions are estimates which will vary with actual construction, and all floor plans, specifications and other development plans are subject to change and will not necessarily accurately reflect the final plans and specifications for the development.

RESIDENCE R

LINE 4

4 BED | 4.5 BATH

INTERIOR 1,993 SF | 185 M²



1210 Brickell Avenue, Miami, FL 33131

Developed By
FORTUNE
INTERNATIONAL
GROUP

THIS PROJECT IS NOT OWNED, DESIGNED, DEVELOPED, OFFERED OR SOLD BY ORA BY CASA TUA LLC OR ITS AFFILIATES (COLLECTIVELY, "BRAND"). 1210 BRICKELL OWNER, LLC, THE DEVELOPER OF THE PROJECT OR ITS AFFILIATES (COLLECTIVELY, "DEVELOPER") USES THE BRAND'S TRADEMARKS PURSUANT TO A LICENSE AGREEMENT WITH THE BRAND, WHICH MAY BE TERMINATED OR REVOKED ACCORDING TO ITS TERMS. THE BRAND HAS NOT CONFIRMED THE ACCURACY OF, AND IS NOT RESPONSIBLE FOR, ANY OF THE STATEMENTS OR REPRESENTATIONS MADE HEREIN. ORAL REPRESENTATIONS CANNOT BE RELIED UPON AS CORRECTLY STATING REPRESENTATIONS OF THE DEVELOPER. FOR CORRECT REPRESENTATIONS, MAKE REFERENCE TO THE DOCUMENTS THAT ARE REQUIRED BY SECTION 718.503, FLORIDA STATUTES, TO BE FURNISHED BY A DEVELOPER TO A BUYER OR LESSEE. THE DEVELOPER IS 1210 BRICKELL, LLC, WHICH HAS A RIGHT TO USE THE TRADEMARK NAMES AND LOGOS OF FORTUNE INTERNATIONAL GROUP. THIS IS NOT AN OFFER TO SELL, OR SOLICITATION OF OFFERS TO BUY, IN STATES WHERE SUCH OFFER OR SOLICITATION CANNOT BE MADE. All depictions of appliances, counters, soffits, floor coverings, accessories, furniture, fixtures, and all other items of decoration are strictly for illustrative and display purposes only and is intended to act as an example to assist purchasers in visualizing a fully furnished unit. Such depictions should not be relied upon as a representation of the final product. All such items will not be included with the unit unless otherwise provided for in the purchase and sale documents and are subject to changes or substitution without notice. Stated square footages and dimensions are measured to the exterior boundaries of the exterior walls and the centerline of interior demising walls and in fact vary from the square footage and dimensions that would be determined by using the description and definition of the "Unit" set forth in the Declaration (which generally only includes the interior airspace between the perimeter walls and excludes all interior structural components and other common elements). This method is generally used in sales materials and is provided to allow a prospective buyer to compare the Units with units in other condominium projects that utilize the same method. Measurements of rooms set forth on this floor plan are generally taken at the farthest points of each given room (as if the room were a perfect rectangle), without regard for any cutouts or variations. Accordingly, the area of the actual room will typically be smaller than the product obtained by multiplying the stated length and width. All dimensions are estimates which will vary with actual construction, and all floor plans, specifications and other development plans are subject to change and will not necessarily accurately reflect the final plans and specifications for the development.

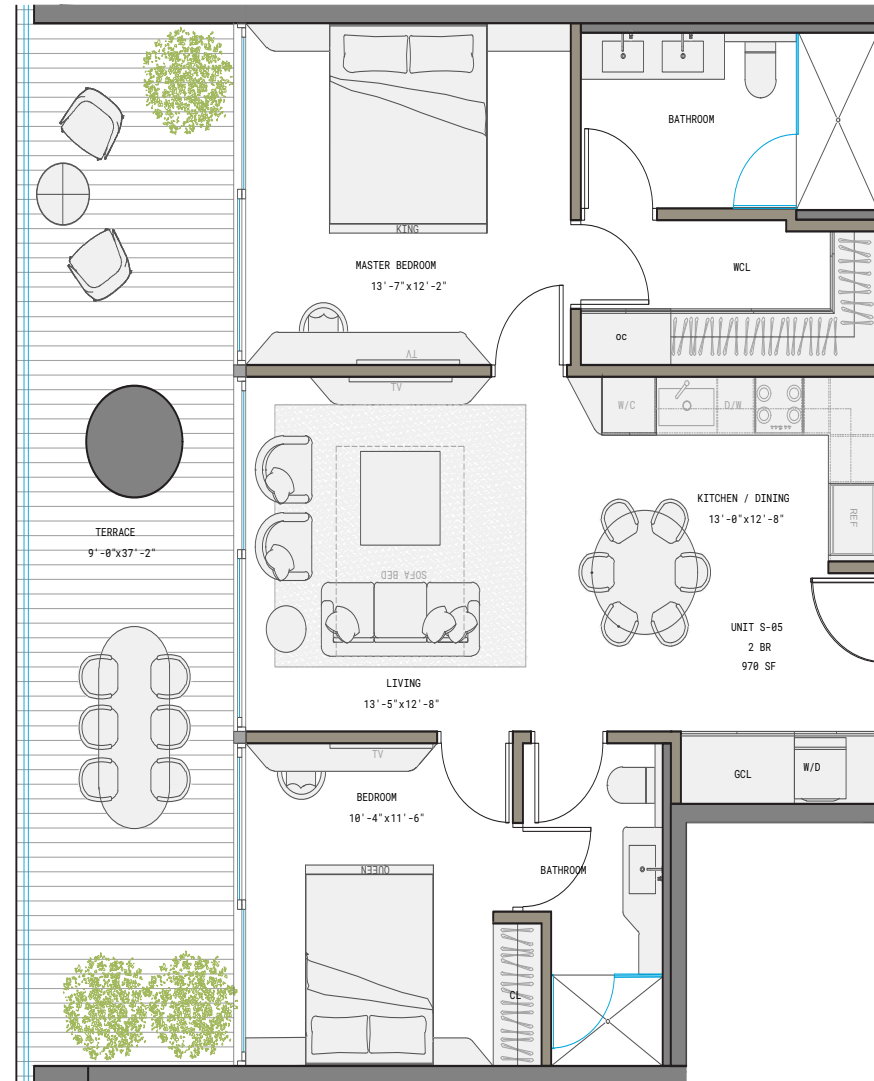
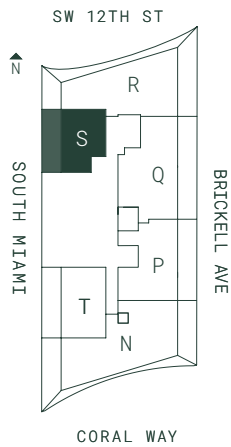


RESIDENCE S

LINE 5

2 BED | 2 BATH

INTERIOR 970 SF | 90 M²



1210 Brickell Avenue, Miami, FL 33131

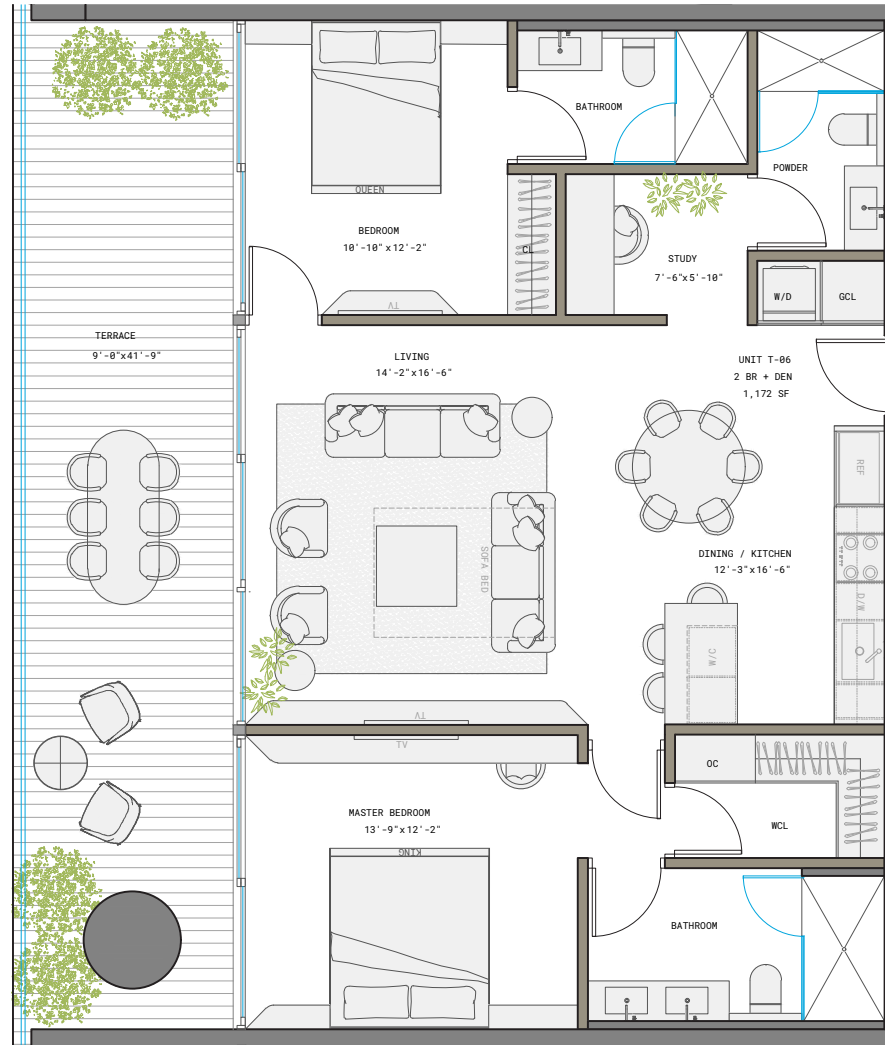
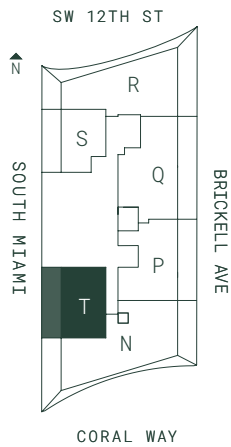
Developed By
FORTUNE
INTERNATIONAL
GROUP

THIS PROJECT IS NOT OWNED, DESIGNED, DEVELOPED, OFFERED OR SOLD BY ORA BY CASA TUA LLC OR ITS AFFILIATES (COLLECTIVELY, "BRAND"). 1210 BRICKELL OWNER, LLC, THE DEVELOPER OF THE PROJECT OR ITS AFFILIATES (COLLECTIVELY, "DEVELOPER") USES THE BRAND'S TRADEMARKS PURSUANT TO A LICENSE AGREEMENT WITH THE BRAND, WHICH MAY BE TERMINATED OR REVOKED ACCORDING TO ITS TERMS. THE BRAND HAS NOT CONFIRMED THE ACCURACY OF, AND IS NOT RESPONSIBLE FOR, ANY OF THE STATEMENTS OR REPRESENTATIONS MADE HEREIN. ORAL REPRESENTATIONS CANNOT BE RELIED UPON AS CORRECTLY STATING REPRESENTATIONS OF THE DEVELOPER. FOR CORRECT REPRESENTATIONS, MAKE REFERENCE TO THE DOCUMENTS THAT ARE REQUIRED BY SECTION 718.503, FLORIDA STATUTES, TO BE FURNISHED BY A DEVELOPER TO A BUYER OR LESSEE. THE DEVELOPER IS 1210 BRICKELL, LLC, WHICH HAS A RIGHT TO USE THE TRADEMARK NAMES AND LOGOS OF FORTUNE INTERNATIONAL GROUP. THIS IS NOT AN OFFER TO SELL, OR SOLICITATION OF OFFERS TO BUY, IN STATES WHERE SUCH OFFER OR SOLICITATION CANNOT BE MADE. All depictions of appliances, counters, soffits, floor coverings, accessories, furniture, fixtures, and all other items of decoration are strictly for illustrative and display purposes only and is intended to act as an example to assist purchasers in visualizing a fully furnished unit. Such depictions should not be relied upon as a representation of the final product. All such items will not be included with the unit unless otherwise provided for in the purchase and sale documents and are subject to changes or substitution without notice. Stated square footages and dimensions are measured to the exterior boundaries of the exterior walls and the centerline of interior demising walls and in fact vary from the square footage and dimensions that would be determined by using the description and definition of the "Unit" set forth in the Declaration (which generally only includes the interior airspace between the perimeter walls and excludes all interior structural components and other common elements). This method is generally used in sales materials and is provided to allow a prospective buyer to compare the Units with units in other condominium projects that utilize the same method. Measurements of rooms set forth on this floor plan are generally taken at the farthest points of each given room (as if the room were a perfect rectangle), without regard for any cutouts or variations. Accordingly, the area of the actual room will typically be smaller than the product obtained by multiplying the stated length and width. All dimensions are estimates which will vary with actual construction, and all floor plans, specifications and other development plans are subject to change and will not necessarily accurately reflect the final plans and specifications for the development.



RESIDENCE T
LINE 6

2 BED + STUDY | 3 BATH
 INTERIOR 1,172 SF | 109 M²
 EXTERIOR 466 SF | 43 M²
TOTAL 1,638 SF | 152 M²



1210 Brickell Avenue, Miami, FL 33131

Developed By
FORTUNE
 INTERNATIONAL
 GROUP

THIS PROJECT IS NOT OWNED, DESIGNED, DEVELOPED, OFFERED OR SOLD BY ORA BY CASA TUA LLC OR ITS AFFILIATES (COLLECTIVELY, "BRAND"). 1210 BRICKELL OWNER, LLC, THE DEVELOPER OF THE PROJECT OR ITS AFFILIATES (COLLECTIVELY, "DEVELOPER") USES THE BRAND'S TRADEMARKS PURSUANT TO A LICENSE AGREEMENT WITH THE BRAND, WHICH MAY BE TERMINATED OR REVOKED ACCORDING TO ITS TERMS. THE BRAND HAS NOT CONFIRMED THE ACCURACY OF, AND IS NOT RESPONSIBLE FOR, ANY OF THE STATEMENTS OR REPRESENTATIONS MADE HEREIN. ORAL REPRESENTATIONS CANNOT BE RELIED UPON AS CORRECTLY STATING REPRESENTATIONS OF THE DEVELOPER. FOR CORRECT REPRESENTATIONS, MAKE REFERENCE TO THE DOCUMENTS THAT ARE REQUIRED BY SECTION 718.503, FLORIDA STATUTES, TO BE FURNISHED BY A DEVELOPER TO A BUYER OR LESSEE. THE DEVELOPER IS 1210 BRICKELL, LLC, WHICH HAS A RIGHT TO USE THE TRADEMARK NAMES AND LOGOS OF FORTUNE INTERNATIONAL GROUP. THIS IS NOT AN OFFER TO SELL, OR SOLICITATION OF OFFERS TO BUY, IN STATES WHERE SUCH OFFER OR SOLICITATION CANNOT BE MADE. All depictions of appliances, counters, soffits, floor coverings, accessories, furniture, fixtures, and all other items of decoration are strictly for illustrative and display purposes only and is intended to act as an example to assist purchasers in visualizing a fully furnished unit. Such depictions should not be relied upon as a representation of the final product. All such items will not be included with the unit unless otherwise provided for in the purchase and sale documents and are subject to changes or substitution without notice. Stated square footages and dimensions are measured to the exterior boundaries of the exterior walls and the centerline of interior demising walls and in fact vary from the square footage and dimensions that would be determined by using the description and definition of the "Unit" set forth in the Declaration (which generally only includes the interior airspace between the perimeter walls and excludes all interior structural components and other common elements). This method is generally used in sales materials and is provided to allow a prospective buyer to compare the Units with units in other condominium projects that utilize the same method. Measurements of rooms set forth on this floor plan are generally taken at the farthest points of each given room (as if the room were a perfect rectangle), without regard for any cutouts or variations. Accordingly, the area of the actual room will typically be smaller than the product obtained by multiplying the stated length and width. All dimensions are estimates which will vary with actual construction, and all floor plans, specifications and other development plans are subject to change and will not necessarily accurately reflect the final plans and specifications for the development.