

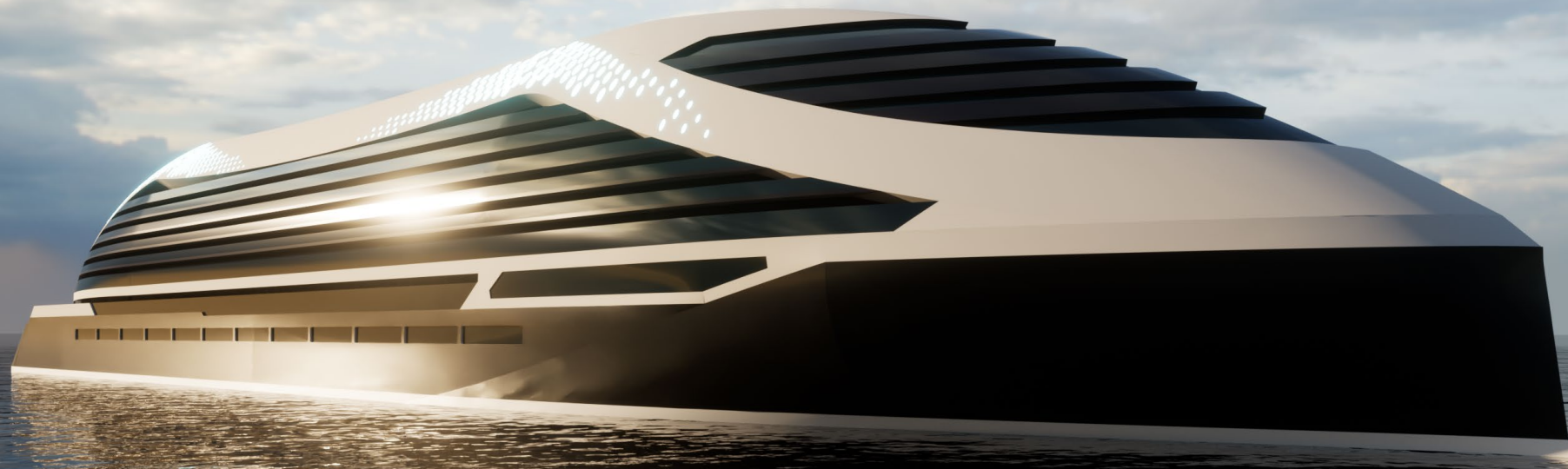
NEOLEAP

BUSINESS
FINLAND

Ecosystem Journey Towards Climate Neutral Cruiseship

Intelligence Hunt 1.6.2022

Program Director Ilkka Rytkölä M. Sc. Nav. Arch.

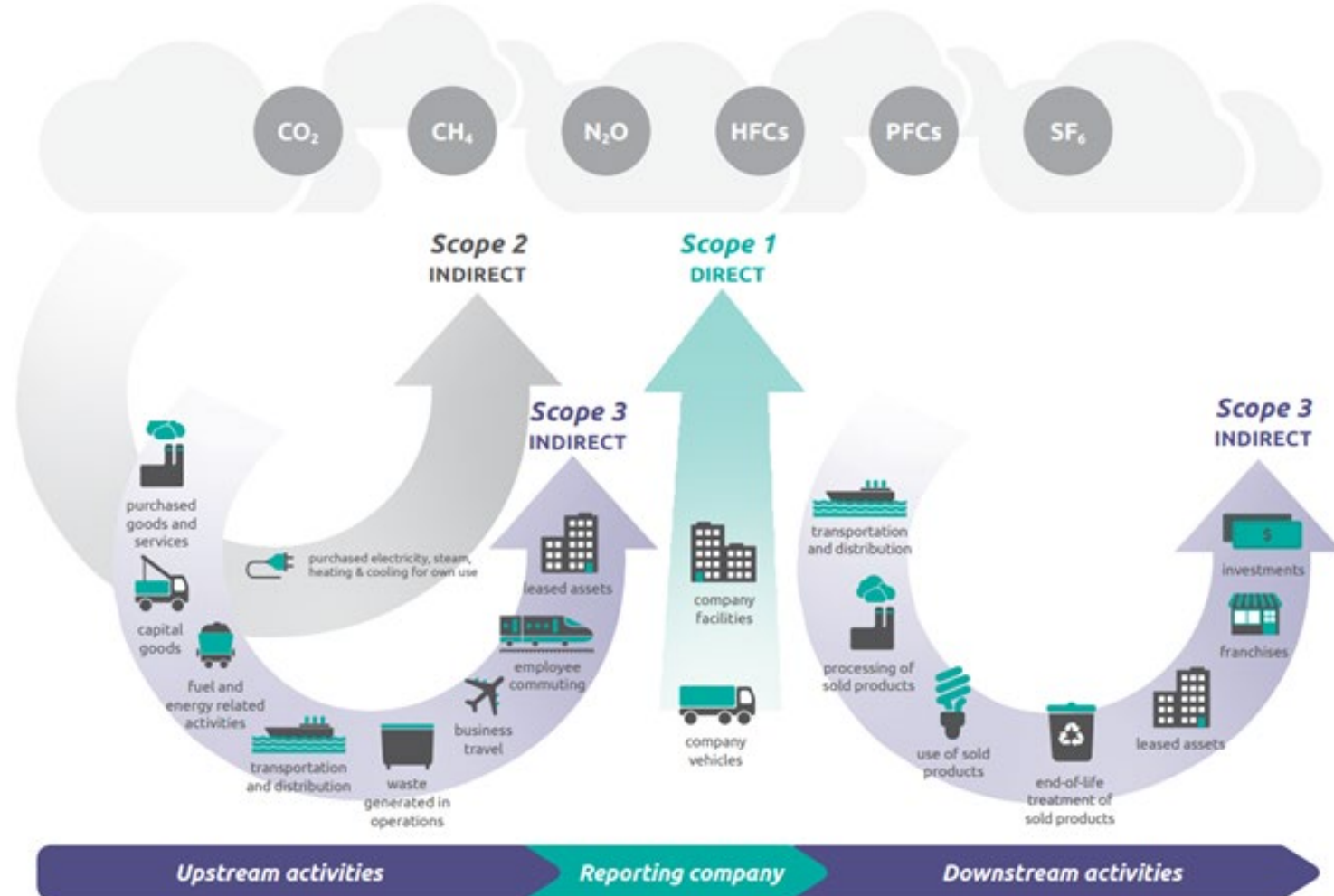


MEYER

Definition and calculation of the carbon footprint

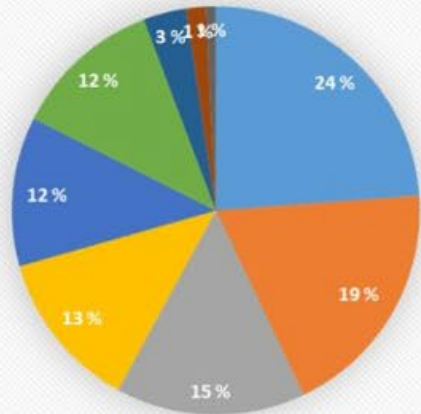
Calculation of the carbon footprint according to the GHG Protocol

- Scope 1: The climate effects of burning fossil compounds in the yard's own operations
- Scope 2: Consumption of electricity and heat
- Scope 3: Indirect emissions



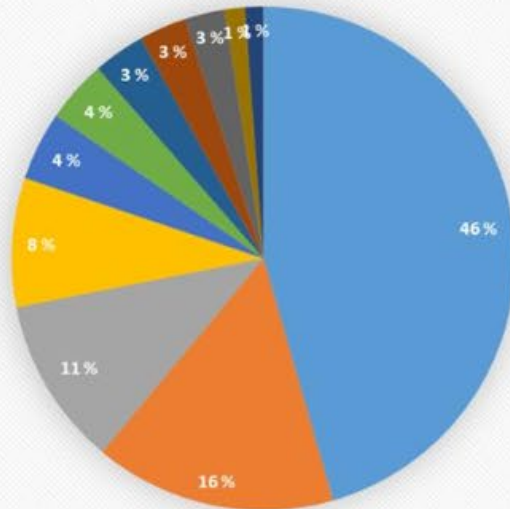
GHG – protocol-based carbon footprints

Shipyard 2020 CO2 eq emissions



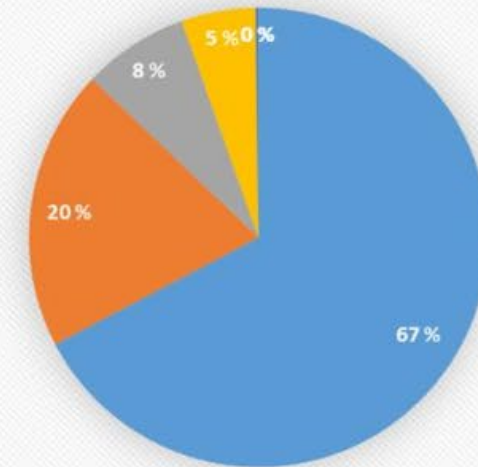
- Ship fuel consumption
- Fuel and energy related activities
- Waste generated in operations
- Purchased goods and services
- Business travel
- Employee commuting
- Purchased heat and electricity
- Facilities
- Company vehicles

Shipbuilding CO2 eq emissions



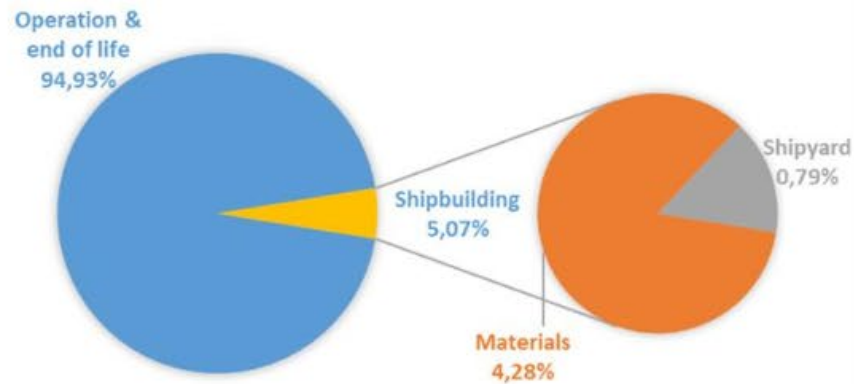
- Steel structure
- Shipyard
- Stateroom
- Pipes, plumbing
- Carpet
- Cables
- Machinery
- Duct
- Insulation
- Paints
- Windows

Full lifecycle CO2 eq emissions



- Fuel onboard
- Fuel and energy related activities
- Building, Maintenance, Dismantling
- Food
- Lubricants
- Waste

OVERVIEW



Fuel and energy related activities = Upstream activities, production of fuel etc.

CONTACT

NEOLEAP

Program Director

Ilkka Rytkölä

M.Sc. Nav. Arch.



[MS Teams](#)

[ilkka.rytkola@](mailto:ilkka.rytkola@meierturku.fi)

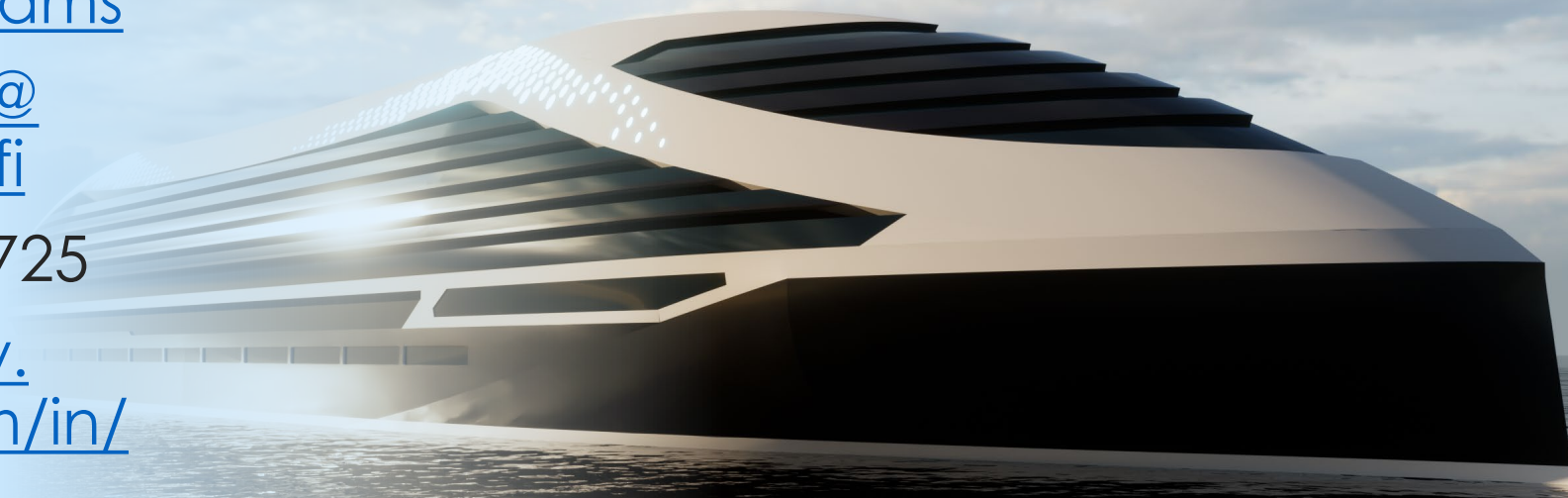
[meierturku.fi](mailto:ilkka.rytkola@meierturku.fi)

+358407492725

[https://www.](https://www.meierturku.fi)

[linkedin.com/in/](https://www.meierturku.fi)

[ilkkarytkola/](https://www.meierturku.fi)



MEYER