



BLACKRIDGE COMMUNITY COUNCIL
NEWSLETTER

WINTER 2021

ISSUE 71



A LOOK AT WHAT'S GOING ON IN THE COMMUNITY

*Blackridge Community Council wish you a joyous holiday season
with peace & cheer in the New Year!*

www.blackridge.cc



BLACKRIDGE

COMMUNITY COUNCIL

Welcome to the winter edition of the Blackridge Community Council Newsletter. We would like to start this issue by introducing you to John Ramsay...

"For those in the village who don't know me, I'm John Ramsay. I have been a Blackridge resident my whole life and have been involved in volunteering and community work for over 40 years. I also had 'Wullie's Ices' ice cream van for 9 years which I am sure many of you remember.

I started out as the manager/leader of the Youth Club in the late 1960's and 1970's which was held in the Public and Lesser Halls, just opposite of the church. At this time, I received a letter from West Lothian District Council asking myself and others to form a Community Council in Blackridge.

Bill McKeown and I are the only remaining living people, as far as my memory serves, that helped to assist in forming the very first Community Council over 46 years ago.

I have tried to attain the very first 'minutes and constitution' but these were stored on microfiche and the files can no longer be retrieved. All I know, is that I was the chairman for 19 years.

For those who are interested in a piece of history, here is what I could find;

Timeline: Old District Council meeting held in Bathgate on 21st August 1975 states that Blackridge intends to offer a submission on 24th September to form its own Community Council.

16th January 1976: Blackridge was acknowledged as a Community Council.

10th March 1976: the first meeting stated that Blackridge will have 12 members.

As some of you may know, the District Council role was taken over by the Regional Council and after some years they reverted back to the current West Lothian Council, this may be why there are only some historical records and suspect original documentation may now not be available.

This is my own recollection of events as they happened."

John Ramsay

You can read more about what the Community Council does for the village these days and how any available funding is spent - page 10.

www.blackridge.cc

If you would like to feature an article in our Newsletter, please email mail@blackridge.cc and put the word "Newsletter" in the subject line.



Joy to the World

He will be a joy and delight to you,
and many will rejoice because of his birth

LUKE 1:14



BLACKRIDGE PARISH CHURCH SERVICE TIMES



A warm welcome to all

COMMUNION SERVICE

Sunday 5th December

10.00am

SCHOOL CHRISTMAS SERVICES

The school services will be held in 3 groups in the church

Monday 20th December

Primary 1 & 2

9.30am

Primary 3 & 4

10.00am

Primary 5, 6 & 7

10.30am

CHRISTMAS SERVICES

Sunday 19th December

Family Service

Friday 24th December

Christmas Eve Service 6.30pm

Sunday 26th December

short service

Readings and Carols



BLACKRIDGE PRIMARY & EARLY LEARNING CENTRE 2021

*The year of Passivhaus,
Froebel, MUGA
and a new Drop Off!*



As we move into the final month of 2021, it is amazing to reflect back on how many changes have occurred in our school community over this year.

We began the year with the children in our Early Learning Centre moving into their new building. The Blackridge Early Learning Centre is a Passivhaus building. Passivhaus buildings are specially designed to offer excellent thermal comfort and very good air quality all year round due to their high energy efficiency, energy costs, as well as greenhouse gas emissions are extremely low.



Within our ELC we follow a Froebelian approach. Friedrich Froebel was a pioneer of early childhood education and care. Froebel's work and writing changed the way that we think about and value early childhood. The approach includes a direct, everyday experience of the natural world. At Blackridge ELC we wish our children to learn and appreciate the natural world's wonders and enjoy all living things. We are fortunate to have access to the amazing Beechbrae. This is a rich environment for all areas of learning. Over the course of 2021 all classes have visited Beechbrae at least twice.



As part of the building projects at school we have a new Multi Use Games Area **MUGA**. We began using this at the end of April and this area is now a firm favourite with all of the children. We use this for most of our outdoor PE lessons and at break and lunch time. This area is used for all of our ball games.

In October we had our new Drop Off area completed. This looks fantastic and helps with the safety of all children into and out of school. This area includes an electric charger for local use. The new charger requires no input from school staff and is available to all users of the ChargePlace Scotland Public EV charging network. Local users can activate the unit using their ID card where the charging sessions will end as soon as it is disconnected from their vehicle.



Since November we have been settled into our new routine, with no building work, and we are all looking forward to continuing to build our community over the festive season. We have a fun packed December scheduled with lots of exciting events planned as you can see from our December Calendar.






The staff and pupils at Blackridge Primary and Early Learning Centre wish you all a joyful Christmas and a peaceful New Year.

Angela Downie



CHRISTMAS - DECEMBER 2021 #Blackridgestars Shine Again



| MONDAY | TUESDAY | WEDNESDAY | THURSDAY | FRIDAY |
|---|---|---|--|--|
| | | | | 26 Happiness Day - Christmas is coming  |
| | | 1 Christmas tree up  | 2 Christmas classroom doors  | 3 Festive Friday  |
| 6 | 7 Christmas STEM Day P1 - P3  | 8 Whole school Christmas lunch  | 9 Christmas STEM Day P4 - P7  | 10 Festive Friday  |
| 13 Christmas Enterprise sent home  | 14 ELC - am party P1 - P3 pm party  | 15 #Blackridgestars shine again Christmas video send  | 16 ELC - pm party P4 - P5 pm party P6 - P7 evening party PIA raffle drawn  | 17 Happiness Day Christmas  |
| 20 P1 - P7 Church visit  | 21 | 22 Last day of term  | 23 | 24 Santa's coming!  |

TUTTI MUSIC

Tutti Music is a community project which aims to offer local people the opportunity to learn a musical instrument through attending organised classes and to encourage participation in the community through music. Attendees are afforded the chance to loan an instrument from a West Lothian Council Library for leisure at home.

Blackridge Management Committee is working in partnership with West Lothian Council's Customer and Community Services. The project has received funding from Blackridge Community Fund - Foundation Scotland, Blackridge & Armadale Management Committees and most recently Greenrigg Community Council to support this project and to make it affordable to all.

We are delighted to now be offering 3 pre-school face to face music classes a week to Blackridge, Armadale and Greenrigg residents. We now have 39 children and 35 parents/carers attending classes and loaning instruments. This number is growing every week. The project has only recently started and due to demand we are considering adding an additional pre-school class in the new year.

In January 2022, we will be expanding the project to include Tin Whistle and Drum classes for primary school aged children. Learning any musical instrument has key benefits, such as bringing people together and socialising. Most of all learning a musical instrument will provide years of pleasure and enjoyment.

Benefits specifically associated with drumming include reducing symptoms of anxiety, depression and even aggression and help to mitigate the symptoms of some behavioural disorders. Syncing up mind and body with rhythm and beats can be almost meditative. Playing the drums develops hand-eye coordination and can help shape fine motor control, while at the same time developing rhythm and timing.

Playing wind instruments such as the tin whistle confers other benefits including teaching patience, boosting self-esteem, improving reading and concentration skills, enhancing coordination, encouraging self-expression and promoting math skills.

If you are interested in joining any of our classes and want to know more about our project please phone Armadale Partnership Centre on 01506 282278.

Come and join the fun

Tutti Tots

Music classes for babies and children
age 3 months to 5 years

Crain Inn Community Centre
6 week block of classes starting on
Wednesday 12th January 10.30am - 11am
Friday 14th January 10.30am - 11am
£1 per session first child, 50p for any subsequent children

Call: 01506 282278 today, to reserve your place



Funding available from Craig Inn Management Committee, Blackridge Community Fund, Blackridge & Armadale Management Committees, Greenrigg Community Council



West Lothian Council



Foundation Scotland

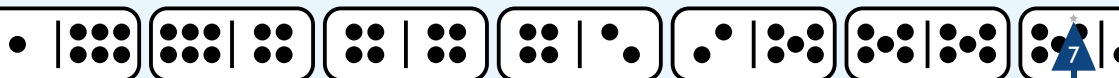
MONDAY CLUB

At the beginning of October, the Monday Club was finally able to resume their meetings at the Craig Inn Centre. It was fantastic being able to meet up with people again with many having not seen each other since lockdown began in March 2020.

The first meeting consisted of a lot of chat and catch-up before deciding what they wanted to do over the next couple of months. The first decision was to have a buffet delivered from TJ's in Armadale to welcome everyone back followed by lining up a few speakers.

Other suggestions made were making a short trip to Mannerstons, having a Christmas Dinner and a panto visit at Howden to round off the year.

Due to not being able to have those events last year, there was still money left over from Foundation Scotland, which will help to fund the activities this year.



FAMILY FUNDRAISER

Sibbald Training arranged a Family fundraising Day on Sunday 17th October 2021. The event and online Just Giving page raised **£8,868.50** for the **Nicola Murray Foundation** (SC041797) - Benefiting those with Ovarian Cancer.

The Nicola Murray Foundation was chosen by one of their team members, and friend, who's close family member was directly affected by Ovarian Cancer and helped through the Nicola Murray Foundation.

Throughout the day visitors could enjoy experiences on 360 Mini Excavators, Crane Slings, 4x4 Rides, Tractor & Trailer Rides, Clay Pigeon Shooting, Pumpkin Patch, Bouncy Castles, Race Car and Vintage Car Displays, Dance Displays from 3 local groups, Face Painting and Slime Making workshops plus so much more.

This wouldn't have been possible without the support of the Sibbald Training Staff and Volunteers, local businesses, groups that performed, car owners and stall holders who all helped on the day.



face painting



pumpkin patch



tractor & trailer rides



race cars

Amazing!
£8,868.50

The online Just Giving page is still open if anyone would like to donate to this very deserving charity (scan qr) or go to:
www.justgiving.com/fundraising/sibbaldtraining



NICOLA MURRAY FOUNDATION

Improving the outcome for Ovarian cancer sufferers and those who carry HNPCC

What we do

Increase awareness of HNPCC and raising funds to help understand it

Research

Find out more about HNPCC and work with the Edinburgh Cancer Centre is doing in this area

Fundraise

Why not get together with friends, family or colleagues to organise an event



nicola murray foundation

www.nicola-murray-foundation.org.uk



BLACKRIDGE HEALTH CENTRE



Festive season Bank Holiday closures:

Monday 27th and Tuesday 28th December 2021
Monday 3rd and Tuesday 4th January 2022



Please call 111 if you require medical attention during the above days.



As we head towards another festive season, we invite patients to submit prescription requests slightly earlier than usual rather than wait until the days leading up to Christmas. We may not be able to turn around last minute requests, so please manage your medication needs wisely. During the festive season we will be running a reduced nursing service who will prioritise essential matters such as dressings and urgent tests etc. Routine annual reviews will be on hold during these times.

We would encourage our patients to take advantage of the new online booking portal for those eligible for COVID boosters and flu vaccinations. Please go to: vacs.nhs.scot/csp and book your appointment today.



We would like to wish our patients a very happy Christmas and a bright and prosperous New Year.



+ Blackridge PHARMACY

PHARMACY FESTIVE OPENING HOURS

| | |
|-------------------------------|--------------------|
| Saturday 25th December | CLOSED |
| Sunday 26th December | CLOSED |
| Monday 27th December | CLOSED |
| Tuesday 28th December | 9.00am till 1.00pm |
| Wednesday 29th, | |
| Thursday 30th, Friday 31st | 9.00am - 6.00pm |
| Saturday 1st January | CLOSED |
| Sunday 2nd January | CLOSED |
| Monday 3rd January | CLOSED |
| Tuesday 4th January | 9.00am till 1.00pm |
| Wednesday 5th January onwards | 9.00am - 6.00pm |

01501 751 175

22 MAIN STREET,
BLACKRIDGE, EH48 3SA

GIFTS AND TOILETRIES AVAILABLE
Collecting for the River Kids Charity.





BLACKRIDGE COMMUNITY COUNCIL

The history of the council was described on page 2 of this newsletter, but many ask “What is the Community Council?” Blackridge Community Council is currently overseen by West Lothian Council and must be operated under a model constitution and code of conduct. There is also a joint forum of Community Councils for West Lothian.

Wind farm monies and various grants are now available and are used to fund - local organisations, student assistance, paths round the village, planters, hanging baskets, seats, church car park, burn cleaning, bulb planting and tree planting. There are many more projects being planned. A finance breakdown of how funding has been spent so far is on page 11.

For further information please look at the Governance section on our website <https://blackridge.cc/governance> or www.westlothian.gov.uk/communitycouncils



EDF RENEWABLES BURNHEAD MOSS EDUCATION & TRAINING FUND (BMET)

APPLY!



Avonbridge, Standburn, Limerigg, Slamannan and Blackridge

Are you thinking about developing your **skills** and **employability**?
Are you engaged in **further education**, a **training course** or **evening classes**?

You can **apply to BMET** for support towards:

- books
- childcare costs
- fees and **MORE!**
- travel
- study aids

Contact **Heather** on:

☎ 07923 400570

✉ outreach@bmetfund.org.uk

🌐 www.facebook.com/BMETFUND

🌐 www.BMETFund.org.uk

🌐 <https://www.foundationscotland.org.uk/apply-for-funding/funding-available/burnhead-moss-bmet>

Scottish Charity No: SC022910



BLACKRIDGE COMMUNITY FUND

Key Fund Statistics, November 2021



FUND OVERVIEW

- Operating with Foundation Scotland since 2014
- Receives circa £50k per year and increasing Finances (to Sept 2021)



87% OF FUND
INCOME
SPENT

31 DIFFERENT GROUPS
HAVE RECEIVED
PROJECT FUNDING

TYPES OF PROJECT FUNDED BY SDG:



foundationscotland.org



Foundation Scotland. For more information contact:
Malcolm Jack, Community Funds Manager (Central region)
Email: malcolm@foundationscotland.org.uk

BEECHBRAE NEWS

Ally Graham



We have had a beautiful autumn season at Beechbrae and are now feeling the pull of winter, most of the leaves have fallen from trees and we've listened as the pink footed geese fly south overhead on their way to their winter abode. It's been a busy and beautiful season for us at Beechbrae, read on for a few highlights and for more regular updates check us out on:

- www.beechbrae.com
- facebook.com/beechbrae
- Instagram @beechbrae

WOODLAND WELLBEING AT BEECHBRAE

We've been busy this autumn running **Woodland Wellbeing** sessions for young people across West Lothian. We've also started another **Branching Out** programme for adults and are really enjoying times around the fire and exploring Beechbrae in autumn and winter. As we are coming into the winter season and the darkness around us increases it is really important for us to make an extra effort to look after our mental health and wellbeing.

BEECHBRAE LABYRINTH

What is a Labyrinth? A labyrinth is an ancient symbol of wholeness, it represents a journey or path to our own centre and back again out into the world. They have long been used as meditation and prayer tools. When we walk one, it can serve as a metaphor for life's journey, it is a symbol that creates a sacred space and place and takes us out of our ego to our spirit, to "That which is within."



"Labyrinths are wonderful tools for enhancing mindfulness. Unlike a maze where you must make decisions about which direction to take, a labyrinth has only one path, so you can switch off the analytical part of your brain and just enjoy the experience. It becomes a walking meditation." Grahame Gardner



The labyrinth at Beechbrae is coming to life at long last. At the end of October, a group of volunteers joined us to lay the labyrinth alongside labyrinth expert Grahame Gardner. The weather was kind to us and we were all really pleased to watch it as it emerged. Bulb planting and perennials are going in next with a few Beechbrae groups. If you'd like to come up and explore the labyrinth you are warmly invited. (It's across from the pond)

BEECHBRAE WOODLAND CENTRE

The centre is nearly complete and we will be hosting open days for people to come have a look around and hear more about what we're up to at Beechbrae. Keep an eye on our website, Facebook and Twitter for details and dates once we have them.



f
beechbraegarden

For more regular information check us out here:
www.beechbrae.co.uk

Instagram icon
beechbrae

Why are you tossing litter around?

- I'm lazy
- I don't care about our village
- Somebody else will pick it up

Please don't be a tosser
Take **YOUR RUBBISH** home!

Blackridge is so fortunate to have scenic open spaces like Beechbrae and Blawhorn Moss on the doorstep for everyone to enjoy. Whether it is running, biking, walking the dog or a family walk, the only way to keep it beautiful is by looking after it. Take all your rubbish home to recycle responsibly, lift all dog poo - it is your dog after all!

Rubbish left could be harmful to inquisitive children and animals not to mention attracting vermin. Be responsible so you can continue to enjoy the outdoors.



KEEP OUR PARKS AND OPEN SPACES CLEAN & SAFE...

The group is happy to report we are up and running again after Covid 19.

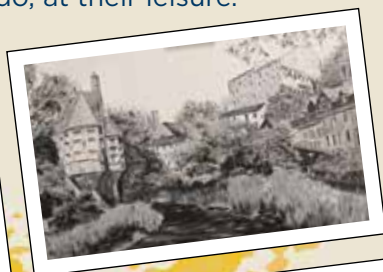
TIMEOUT ART CLASS

In September this year our group celebrated it's **21st birthday** in Craig Inn Community Centre where we enjoyed a lovely evening.

Special guests were Marion & Barry Stewart and Leslie & Billy Craig and the cake was cut by Jean Waddell and our oldest member Mamie Herd.

The Art Class was the inspiration of Jean Waddell and today her dedication and passion still shines through, she is now Honorary President of the club.

There is always a warm welcome for adults who would like to draw, paint or any art or craft they want to do, at their leisure.



We meet up every
Tuesday from **6pm - 9pm** in **Craig Inn Community Centre**
If you need more info call Mary 07432 850563 or Helen 07958 461460

CRAIG INN COMMUNITY CENTRE



YOGA

Monday & Wednesday 6.00pm



ADULT FITNESS

Wednesday 1.00pm - 2.00pm

Library Hours

Monday 9.00am - 3.30pm • Tuesday 5.00pm - 9.00pm

Craig Inn Community Centre, Museum and Library, Blackridge
Tel. 01501 753227 • Email: laura.redmond@westlothian.gov.uk

BLACKRIDGE, WESTRIGG AND WESTCRAIGS CHILDREN'S GALA DAY

After two years in which it wasn't possible to hold the Gala Day, it is hoped the 2022 celebration can go ahead in the normal way.

If you'd like to be part of the committee that can make it happen, come along to the AGM. You'll be made very welcome.

AGM

MONDAY 17th JAN 2022
6.30pm • CRAIG INN



If you'd like a chat about being on the committee, speak to Barry Denholm or Stuart Borrowman.



WE ARE
MACMILLAN.
CANCER SUPPORT

THANK YOU



Macmillan Cancer Support believe that **“If you’re diagnosed with cancer, your worries are their worries and they will move mountains to help you live life as fully as you can.”**

And that is why, even in these most challenging times the response to this year’s “World’s Biggest Coffee Morning” in Blackridge was tremendous.

A huge thank you to everyone who helped in any way to raise this year’s magnificent total. But it wasn’t just one morning, there were a number of events held throughout the year including cake sales. At the main event, held on 24th September there were more cakes and other items for sale as well as a tombola.

Hopefully next year we will all be back at the Craig Inn Centre raising even more funds for this worthy cause.

**YOU RAISED
£2267.66**

RECIPES



LEMON CURD IN THE MICROWAVE

2 lemons
2oz margarine or butter
8oz sugar
3 eggs

Place in a bowl - rind and juice of the lemons, sugar, melted margarine, and beaten eggs.

Mix well then microwave for 4 to 5 minutes mixing after each minute.

when life
gives you



LEMON CURD ICE CREAM

250g ready made lemon curd
125g crème fraiche
250g Greek yoghurt

Mix together yoghurt and crème fraiche in a large bowl.

Stir in the lemon curd.

Pour into freezer proof dish and then into freeze for 3 hours.

CHRISTMAS TRAY BAKE

8oz butter or margarine
zest of an orange
8oz soft brown sugar
7oz plain flour

4 eggs
2 teaspoons cinnamon
7oz mincemeat
1 teaspoon nutmeg

Beat butter and sugar, add eggs one at a time and beat well.

Stir in flour, cinnamon and nutmeg.

Tip into a greased and lined brownie tin and bake for 35 minutes at 160 degrees.

Cool and cover with cream cheese icing.

A LITTLE BIT OF HISTORY

SIR PETER MATTHEWS CVO, OBE, QPM

Peter Jack Matthews was born at 55 Westrigg on Christmas Day 1917 to Thomas Matthews who ran a small shop and his wife Agnes Jack.

After education at Blackridge Public School, he briefly worked in the local pits but in 1937 he joined the Metropolitan Police.

In 1942, during the Second World War he was commissioned into the RAF and flew as a pilot until demobilisation in 1946 with the rank of flight-lieutenant. He then returned to the Metropolitan Police continuing his career and rising to Chief Inspector in the early 1950's then Chief Instructor at the Metropolitan Police Dog Training Establishment.



Peter seconded to the Cyprus Police with a team of policemen and a pack of Alsatian dogs, with the task of detecting buried arms and ammunition during the EOKA crisis of 1955.

In 1957, Peter Matthews was in charge of police at the scene of the Lewisham train accident, the most serious such incident in the history of the London force with 90 fatalities.

On his return to England, he was appointed Chief Superintendent at Catford and in 1965 became Chief Constable of East Suffolk. In 1968 he was appointed Chief Executive of Surrey, a position he held until his retirement in 1982.

During that time he took over as head of 'Operation Countryman', a major investigation into police corruption within the Metropolitan Police. He was also Chief Constable at the time of the Guildford pub bombings and awarded the Queen's Police Medal in 1970. Peter Matthews became the first Westrigg man to be knighted by Her Majesty in 1981.

Together with Lady Margaret, he was an occasional visitor to Blackridge and I found him a very pleasant, self-effacing man and know why he was highly-regarded by his former colleagues.

Sir Peter sadly died in 2003.

by Stuart Borrowman

CHRISTMAS LIGHT SHOW



Hot on the heels of an eye-popping Halloween Light Show, Derek Campbell is busy preparing for this years Christmas Light Show.

Derek's October show at Leishman Court attracted over 2000 visitors and featured a towering jack-o'-lantern and boasted millions of bulbs and an LED screen to get everyone into the spirit of Halloween.

This years chosen charities are even more personal, as their baby boy needed treatment at just 10 weeks old and had 2 emergency open heart surgeries.

The **Christmas Light Show** is well under way and they cant wait to deliver yet again another amazing show for you all.

CHRISTMAS LIGHT SHOW - DATES & TIMES

| | |
|------------------------|---------------------------|
| FRIDAY 10th DECEMBER | 5.00pm, 6.30pm and 8.00pm |
| SATURDAY 11th DECEMBER | 5.00pm, 6.30pm and 8.00pm |
| SUNDAY 12th DECEMBER | 5.00pm, 6.30pm and 8.00pm |
| FRIDAY 17th DECEMBER | 5.00pm, 6.30pm and 8.00pm |
| SATURDAY 18th DECEMBER | 5.00pm, 6.30pm and 8.00pm |
| SUNDAY 19th DECEMBER | 5.00pm, 6.30pm and 8.00pm |
| FRIDAY 24th DECEMBER | 5.00pm and 6.30pm |

Who is coming???

They are taking **requests for personalised messages** to be displayed during the show and will have the singing faces read your message out loud for your little ones or loved ones. It is £5.00 per message, 10 slots available per show!!! All monies will be donated to the charities.

For more information visit "Westrigg Electrical Light Shows" on Facebook

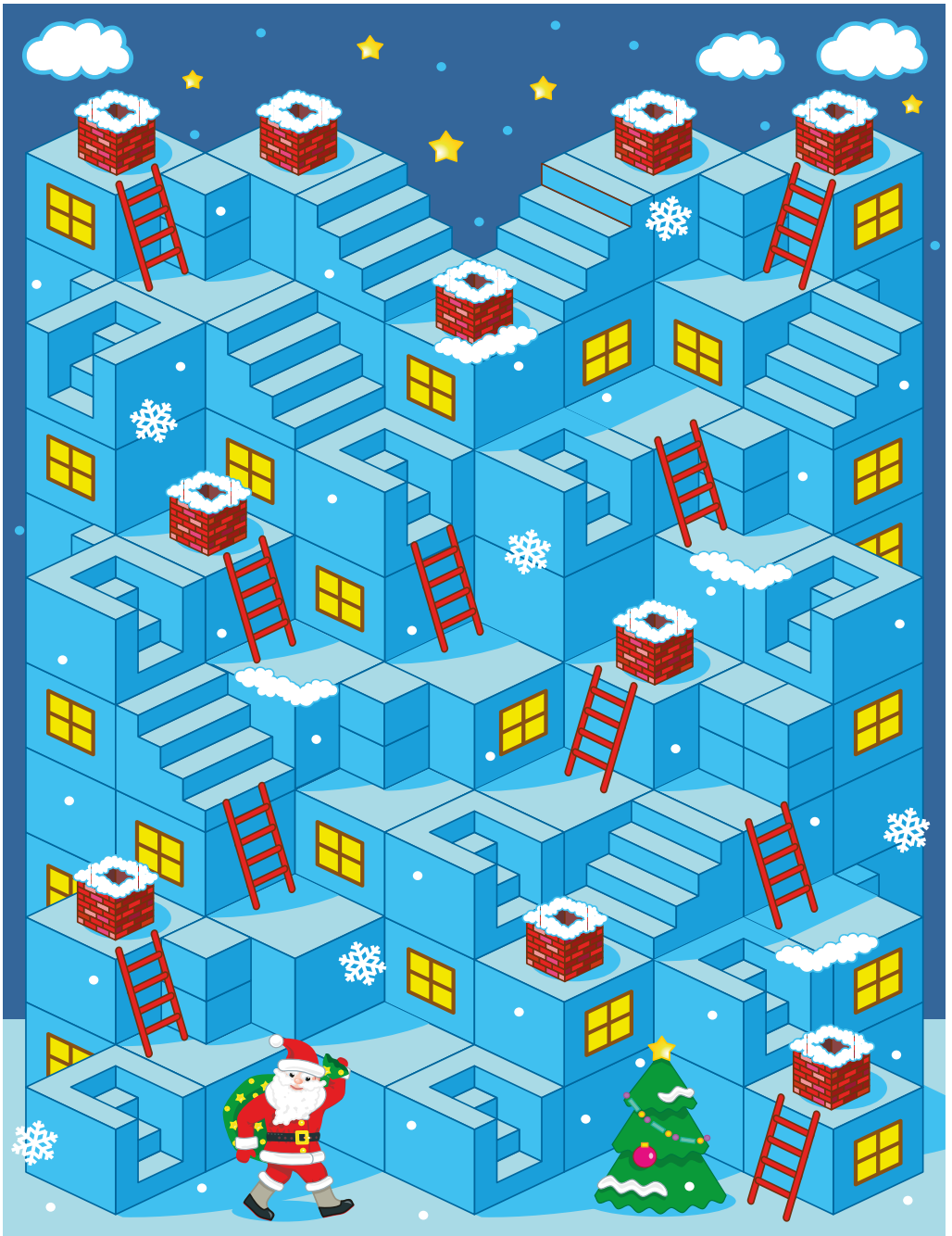
If anyone would like to donate to **The Zak Scott Braveheart Foundation** visit <https://gofund.me/d7e3398b>

Festive Fun... for all the family!



There are 23 differences, can you find them?





CAN YOU HELP SANTA?

Help Santa deliver presents through the Blackridge chimneys (don't miss any). Use stairs and ladders only for Santa's safety, don't let him jump or climb up the walls!



ANDY'S

COFFEE HOUSE



CAFE & TAKEAWAY

Open 7:00am - 2:30pm

Breakfast and Lunch to sit in or takeaway

Rolls • Wraps • Panini • Baguettes • Toasties • Hot Dogs • Burgers
Hot Meals • Kids Meals • Sandwich Trays for events
Selection of Hot and Cold Beverages

PLACE YOUR ORDER TO COLLECT ON 01501 486759

34D WEST MAIN STREET, WHITBURN (next to Semichem)



500 BUSINESS CARDS FOR THE PRICE OF 250!

DESIGN, PRINT AND DELIVERY FOR £85* - USE CODE 74DBCC
EMAIL: SUSAN@SEVENTYFOURDESIGN.CO.UK

**price does not include logo design. Logo design from £50.*



**LOGO DESIGN • BUSINESS CARDS • BROCHURES
MENUS • LEAFLETS • NEWSLETTERS**

Freelance Design & Print

www.seventyfourdesign.co.uk



LOVE THY NEIGHBOUR

With the festive period creeping up on us, it is easy to forget that this time of year can be a challenging time for some, while many get together with family and friends there are some who sit isolated and lonely. You can help in so many ways if there is a neighbour on their own, regardless of age, we can all get lonely but all it takes is the smallest gesture to make someone smile this Christmas.

If you are feeling lonely just know that there is always someone at the end of the phone willing to just talk, even on Christmas Day!

No one should have no one!



Need help?

Call us ANYTIME on: 0800 4 70 80 90

The Silver Line is the only free confidential helpline providing information, friendship and support to older people, open 24 hours a day, every day of the year.



www.ageuk.org.uk

Samaritans are 'ear' for anyone feeling lonely or isolated this Christmas

**SAMARITANS
Scotland**

**When life is difficult,
Samaritans are here - day
or night, 365 days a year.**



Call free on 116 123

**Email jo@samaritans.org
samaritans.org**

IMPORTANT TELEPHONE NUMBERS

POLICE/FIRE

| | |
|------------------------|--------------|
| Police HQ Livingston | 01506 431200 |
| Police (Non-Emergency) | 101 |
| Fire (Emergency) | 999 |

HOSPITALS

| | |
|--|---------------|
| St. John's Hospital, Livingston | 01506 523000 |
| University Hospital Monklands, Airdrie | 01236 748748 |
| Royal Infirmary of Edinburgh | 0131 536 1000 |
| Western General Hospital, Edinburgh | 0131 537 1000 |
| University Hospital Wishaw | 01698 361 100 |

HEALTH

| | |
|-----------------------------------|--------------|
| Blackridge Health Centre | 01501 751238 |
| Harthill Health Centre | 01501 751795 |
| Armadale Health Centre | 01501 730432 |
| District Nurses / Midwife /Physio | 01501 730339 |
| Blackridge Pharmacy | 01501 751175 |
| NHS24 (Out of Hours Service) | 111 |

SCHOOLS

| | |
|---------------------------------|--------------|
| Blackridge Primary | 01501 751223 |
| Armadale Academy | 01506 282145 |
| St. Anthony's Primary, Armadale | 01501 731668 |
| St. Kentigern's, Blackburn | 01506 656404 |

UTILITIES EMERGENCIES

| | |
|----------------------------------|---------------|
| Scottish Gas | 0800 111 999 |
| SP Energy Networks (Electricity) | 105 |
| Scottish Water | 0800 077 8778 |

TRAVEL

| | |
|------------------------|--------------|
| Rail Service Enquiries | 0845 7484950 |
| West Lothian Traveline | 01506 775288 |

WEST LOTHIAN COUNCIL

01506 280000

LOCAL COUNCILLORS

| | |
|------------------|--------------|
| Stuart Borrowman | 01506 281702 |
| Andrew McGuire | 01506 281717 |
| Sarah King | 01506 281741 |