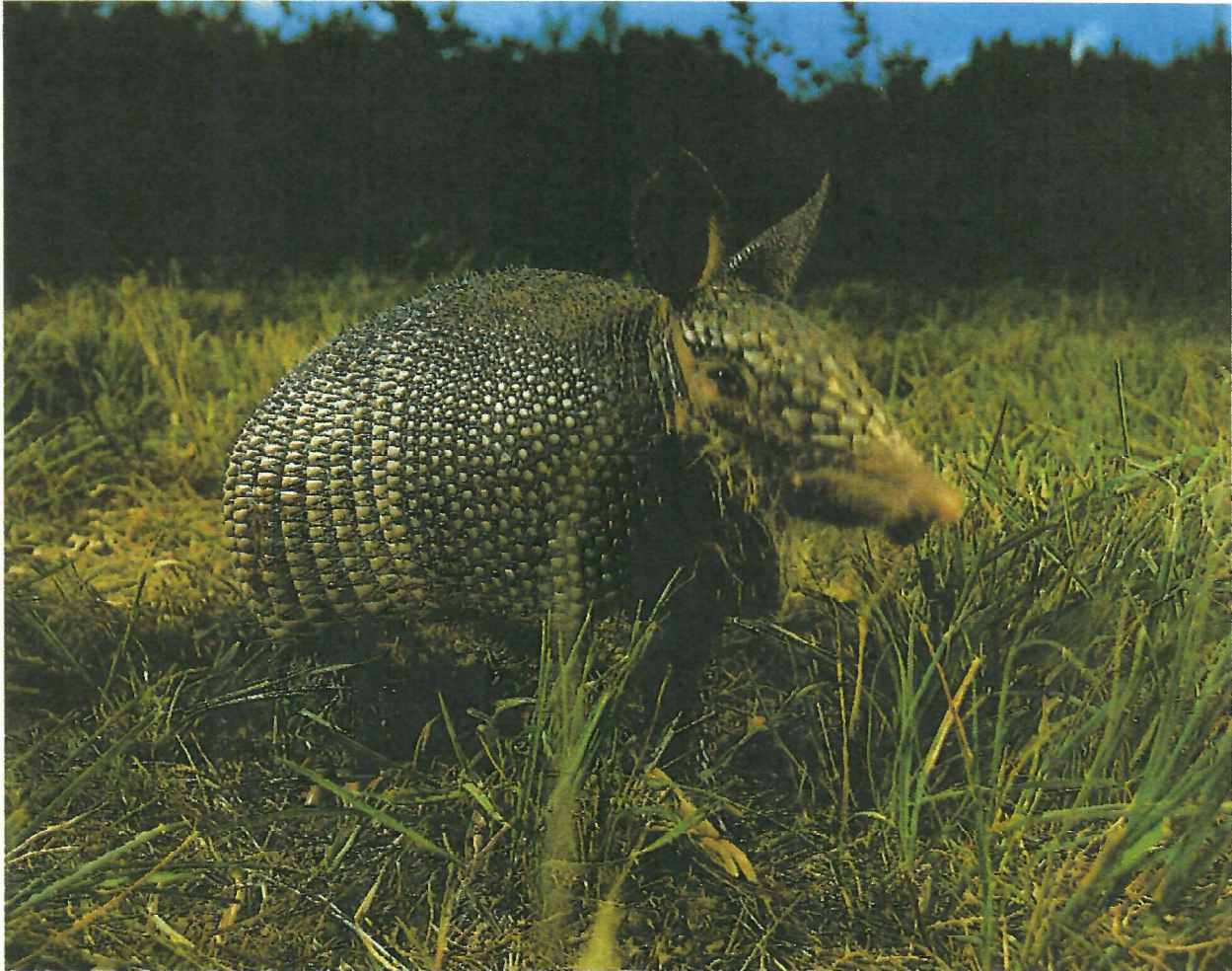


# GONE TO TEXAS



***"Dilly" The GTT Caravan Mascot***  
*(Watch for Him/Her down the road.)*

**National Caravan N-36-E**

**SEPTEMBER - OCTOBER 2007**

*The Long Road To Texas*

**Leaders: Marilyn & Walter Adams**  
**WBCCI 5944**

**RENDEZVOUS – R V RANCH**  
 BURLESON, TEXAS 76028 817-426-5037  
 September 22 - 23, 2007



**ACTIVITIES AFTER ARRIVAL AT PARK**

Sept. 22    After Parking    Receive Driver's Manual in Club House  
 Rest of Day    Visit Fort Worth and area attractions  
 5:00PM    Meet at Club House for Happy Hour & Dinner.  
 After Dinner    Visit in clubhouse



Sept. 23    After Parking    Receive Driver's Manual in Club House  
 Rest of Day    Visit Fort Worth and area attractions  
 5:00 PM    GAM #1 in Club House  
 6:00 PM    *Driver's Meeting in Club House*

9/24    Early Crew to San Angelo    2:30

---

9/24    Caboose Crew to San Angelo

---



# R V RANCH TO FORT CONCHO

San Angelo, Texas 76903 325-481-2646  
September 24, 2007

ROUTE MILES: 221

PARKING AFTER 4:00PM

Exit RV Park to IH35W south to Alvarado Exit 26	4
Exit to US67 West to Cleburne	11
US67 (Business Route or By-Pass) to Glen Rose	24
US67 West to Dublin <i>Tour Dr. Pepper Bottling Co. &amp; Museum</i>	43
US67 West to Brownwood <i>Under wood</i> <i>Tour Mac Arthur Academy of Freedom. See map for directions. Good place for lunch. Try Underwood's Cafeteria.</i>	47
US67 West to Ballinger	54
US67 West to SanAngelo, Oakes Street Exit	36
Left on Oakes, cross railroad and turn left on Henry Flipper Street to parking area at blue barn	2

## SCHEDULED ACTIVITIES

6:30 PM

*Drivers Meeting in Parking Lot*

Visit Concho Street Downtown

9:30

Good Mexican Food in Area - Ask Marilyn

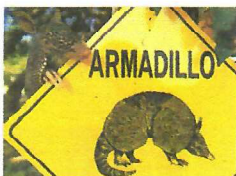
~~10:30AM~~ Tuesday

Guided Tour of Fort Concho

9/25 Early Crew to Buffalo Gap ADAMS HOFFMAN ROTHE KINDLE

9/25 Caboose Crew for Buffalo Gap WAGNER HICE

*David with Robert Smith & offshoot Howard & Roy Waters Wolf & Jane Rothe*



# R V RANCH TO SAN ANGELO

## Sights to See on the Way

**KEENE:** Alt. 693. The General Conference of the Seventh Day Adventists opened a school to train ministers here in 1894. Today, the school is a Level III university, Southwestern Adventist University.

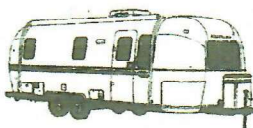
**CLEBURNE:** Alt. 764 The seat of Johnson County. A former railroad center with one of the state's largest construction and repair shops. Historic Locomotive #3417 is on display in Hulen Park. The dome in the county court house contains beautiful stained glass. It is open during business hours.

**GLEN ROSE:** Alt. 680 Known for the best preserved dinosaur tracks, some experts say, in the world; can be seen in Dinosaur Valley State Park. Home of one of Texas nuclear power plants, Comanche Peak. Interesting downtown area. Take 144 loop through town. Come back to visit Fossil Rim Wild Life Center.

**STEPHENVILLE:** Alt. 1283 The seat of Erath County, one of the state's largest dairy producers. Home of Tarleton State University and one of the largest tree nurseries in the southwest. Recognized as one of "The Best 100 Small Towns in America."



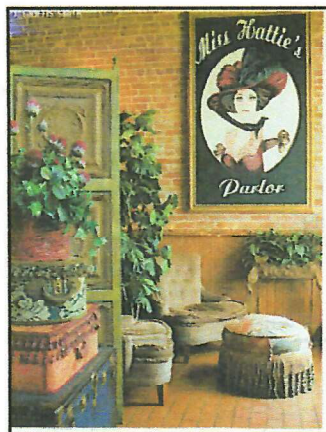
★★**DUBLIN:** Alt. 1493 Bayer RV, an Airstream Dealer, 1-800-859-9205 is located on the left side of the highway as you approach Dublin. Dr. Pepper Bottling located downtown on the left opened in 1891; the first franchise is still bottling Dr. Pepper. Visit the museum, Old Doc's Soda Shop and the Gift Shop all in the same building. Be sure to ask how the town got it's name. It is not like you may think. There is plenty of parking space past the museum



and on side streets.

★★**BROWNWOOD:** Alt. 1342 Home of Howard Payne University and Douglas MacArthur Academy of Freedom. Interesting displays, if open, in The Brown County Museum, 200 North Broadway, downtown.

**BALLINGER:** Alt. 1637 **THE CROSS** rising over 100 feet from the rolling prairie was built in 1993. It measures 70 feet from tip to tip on the arms, the arms are 60 feet from the ground. It weighs over 50 tons.



★★ **SAN ANGELO:** Alt. 1847 San Angelo grew around the frontier site of Fort Concho. Today it is a large, primarily, wool and mohair market center with a major livestock auction. In the earlier days San Angelo appealed to cowboys, soldiers and buffalo hunters.

"*Miss Hatties*" became an institution as a brothel located on Concho Street. Its doors were finally closed by The Texas Rangers in 1946. Tours are available every day and it houses a good restaurant. You may want to visit the downtown river-walk for pictures. There is a bridge across the river that leads to Concho Street.. The historic Orient-Santa Fe railway station is on south Chadbourne and The Cactus Hotel built in 1929 by Conrad Hilton is located nearby.



# FORT CONCHO TO ABILENE STATE PARK

Tuscola, Texas 77562 325-572-3204

September 25, 2007

ROUTE MILES 90

PARKING AFTER 4:00PM

Exit parking lot, turn left on Oakes Street, turn right on Washington Street, turn right on Chadbourne Street to US67 (Houston - Harte Freeway)	2
Enter Freeway to right (East) to junction with US 277 North	3
US277 North to Bronte	34
US277 North to Fort Chadbourne Entrance (on Right)	12
Turn right on ranch road to ranch headquarters	1
Return to US277, turn right (north) to junction with FM89 <i>Site of Coronado's Camp on left</i>	20
Turn right on FM89 to Park Entrance (on Right)	16
Enter Park and follow WBCCI signs to Wagon Circle	2

## SCHEDULED ACTIVITIES

10:30AM Guided Tour of Fort Concho  
 2:00PM Approx. Guided tour of Fort Chadbourne  
 5:00pPM (After Arrival) GAM #3  
*6:00 PM Drivers Meeting*

9/26 Early Crew to Midland ADAMS GANTT BROCK JOHNSON

9/26 Caboose Crew for Midland COTTER CONNORS

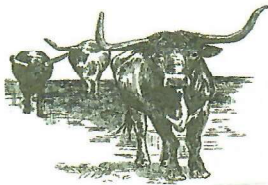
*Trail with*

# FORT CONCHO TO ABILENE STATE PARK

## Sights to See on the Way



**BRONTE: Alt. 1893** Founded in 1887 as a cattle town on The Chisolm Trail.



**\*\*FORT CHADBOURNE:** Established in 1852 and was abandoned in 1873 due to a lack of water and wood in the area. A former stop for Butterfield Overland Mail. The present owners, Garland and Lana Richards, are fourth generation owners of the family ranch established in 1875.



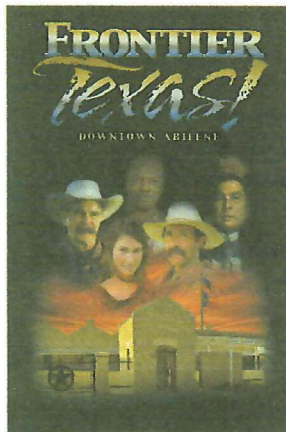
**WATCH FOR THE ENTRANCE SIGN ON THE RIGHT.**

**CORONADO'S CAMP:** Southwest corner of FM89 and US277. There is evidence that Spanish Explorer "Francisco Vasquez de Coronado" camped in this area in 1541.

**\*\*BUFFALO GAP: Alt. 1926** A complex of 20 historic structures form the village. Buffalo Gap is a break in the Callahan Divide that separates the Brazos and Colorado Rivers. Thousands, perhaps, millions of Plains buffalo passed through here on their way to winter on the grass south of here. Comanche Indians controlled this area for over 100 years after the white man came. Buffalo hunters slaughtered thousands of buffalo for their hides. The hides were shipped to Fort Worth by rail and processed for many uses.



At the time of the Civil War, huge herds of buffalo roamed this area. A favorite buffalo run was through the gap in the Callahan Divide, near what is now the town of Buffalo Gap.



**\*\*ABILENE: Alt. 1738** A Cattle shipping point on The Texas and Pacific Railroad named after Abilene, Kansas. The home of three major universities; The Sweetwater Baptist Association opened Hardin-Simmons College in 1892. Not to be outdone, the Church of Christ created Abilene Christian College in 1906. The Methodist Church founded McMurray College in 1923. Dyess Air Force Base is currently home to B-1B Lancers and C-130 Hercules planes; visitors may get a temporary pass at the main gate. Downtown attractions are the Land Mark Paramount Theater and Grace Museum. The Frontier Texas Museum is an experience not to be missed. **YOUR WBCCI NAME BADGE IS YOUR ADMISSION TO FRONTIER TEXAS. PARKING ON ALL SIDE STREETS.**



# ABILENE STATE PARK TO MIDLAND HORSE SHOE

Midland, Texas 79702 432-682-1300

September 26-27, 2007

ROUTE MILES 173 PARKING AFTER 3:00PM

Exit Park to FM 89 North thru Buffalo Gap to FM 707	10
FM707 East to US83/84	2
US83/84 North to Loop 322 in Abilene	7
US83 Business Route/Spur 243 North to First Street (Cross IH20)	4
Left on First Street to Frontier Times Museum on left <i>Parking is available on all side streets. Group pictures in front of Buffalo before tour. Bring your camera.</i>	0
Return to US83 Business Route/Spur 243 to IH20 Business	0
West on Business IH20 to Intersection with IH20 to Sweetwater <i>Optional: IH20 Business Route to Sweetwater. Allen Family Restaurant is on right. Trailer parking in Shopping Center lot on left.</i>	42
Business IH20 and IH20 West to Colorado City	27
IH20 West to Big Spring	38
IH20 West to Midland Horseshoe (Exit 136)	41

## SCHEDULED ACTIVITIES

Sept. 26    9:00AM    Tour Frontier Times Museum  
                  5:00PM    Caravan Reception at The Horse Shoe

Sept. 27                    Tour Petroleum & Presidential Museums  
                                   *Your WBCCI Badge is your ticket.*  
                                   Tour CAF at Midland Airport (Optional)  
                  *7.00PM    Drivers Meeting*

9/28    Early Crew to Carlsbad Caverns    ADAMS    HADDAWAY    GUBRUD    BURKE

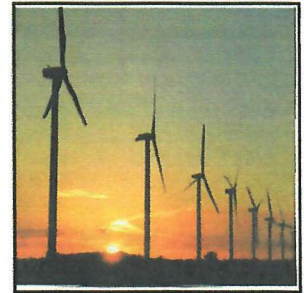
9/28    Caboose Crew to Carlsbad Caverns    HOFFMAN    DUFFY

8,15

# ABILENE TO MIDLAND/ODESSA

## Sights to See on the Way

**ABILENE:** Alt. 1,738 We begin our 1 ½ hour tour of Frontier Times Museum about 9:00. We do not all have to be together for the tour. Your WBCCI Badge is your ticket to the museum. Abilene is the home of 3 major universities and Dyess Air Force Base with B1-B Stealth Bombers and C130-H Hercules cargo planes. Watch for them as we travel West on IH20.



**SWEETWATER:** Alt. 2,164 Sweetwater is the home of the WWII WASP program. They trained over 1,000 women pilots at Avenger Field. See the display in the County Museum at 610 E. Third Street. Each year in March Sweetwater is host to the "World's Largest Rattle Snake Round-Up" They usually collect 6-7 ton of live snakes.

**ALLEN FAMILY STYLE MEALS** has operated in town for more than 50 years. Previous caravans have good comments about their food.

**COLORADO CITY:** Alt. 2,067 Visit downtown at 2<sup>nd</sup> and Chestnut to view over 230 Cattle Brands used in Mitchell County. These are painted on the outside wall of a building.



**BIG SPRING:** Alt. 2,397 Big Spring's name is derived from the huge natural spring that used to water buffalo, antelope and Comanche Indians. The home of WWII Webb Air Force Base, Hanger 25 Air Museum features items from the Bombardiers School. Call 915-964-2362 for hours and directions. The Heritage Museum at 6<sup>th</sup> and Main is recommended by previous caravaners.

**MIDLAND/ODESSA:** Alt. 2,779 The Jim Hall Chapparral Race Car Gallery is located in The Petroleum Museum Building. Tour of the Petroleum Museum and Auto Gallery will usually be 3-4 hours. You can go both days on the same admission. The Presidential Museum in Odessa is devoted to political campaigns from George Washington to George Bush. Some bizarre items are on display. The Commemorative Air Force Museum is located at Midland/Odessa Air Port and is open from 9:00 to 5:00 daily. The fee for admission is not included in Caravan Events. If you have time left visit The Monahans Sandhills State Park. Take your camera.





Fri Sept 28, Carlsbad New Mexico



### MIDLAND HORSE SHOE TO WHITES CITY R V PARK

Carlsbad Caverns, N.M. 88268 1-505-785-2291  
September 28-29, 2007

ROUTE MILES 209

PARKING AFTER 3:00pm

Return to IH20 West to Monahans  
*See Texas Travel Guide for Sights*

58

IH20 West to Pecos (Exit 42 - US285 North)  
*See Texas Travel Guide for Sights*

38

US285 North to Texas 302

17

Texas 302 to Mentone (Round Trip Approx. ) *17 people*  
*Not listed in Texas Travel Guide Only town in county*

10

US285 North to intersection US180/62 in Carlsbad, New Mexico  
**BEST PLACE FOR FUEL. NEXT FUEL IS EL PASO.**

68

US180/62 South to Whites City  *Hwy 7 New Mex.*  
Watch for turn-off to right. The RV Park is on the left.

18



### SCHEDULED ACTIVITIES

6:30pm

Car-pool to Caverns for Bat Flight (Starts about dark.) **Watch for handicap parking on the left before you get to the Visitor's Center.**

Sept. 29 8:00AM Breakfast at Fast Jack' Restaurant  
9:00AM Car Pool to Caverns for 2 of 3 Tours  
7:00PM GAM #2  
**7:45PM DRIVERS MEETING**

---

9/30 EARLY CREW TO EL PASO ADAMS ULRICH GORDON, DON NUNN

---

9/30 CABOOSE CREW TO EL PASO LaROCCA JARRELL

---

# MIDLAND/ODESSA TO CARLSBAD CAVERNS

## Sights to See on the Way

**Monahans:** Alt. 2613 A temperature of 120 degrees was recorded here on June 28, 1944, a record in Texas. Monahans Sandhills State Park has the classical landscape of the Sahara Desert. Not apparent to the eye is one of the largest oak forests in the nation, covering over 40,000 acres. The Million Barrel Museum located on US80 Business is an oil storage facility built in 1929. It was abandoned because of unrepairable leakage.



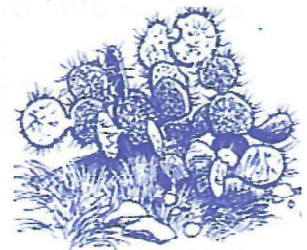
**Pyote:** Alt. 2600 The World War II home of Rattlesnake Bomber Base. Trained 1000's of B17 and B29 flight crews. The museum is usually open only on Saturday and Sunday.



**Pecos:** Alt. 2580 Claims to be "Home of World's First Rodeo". Stop to visit West of The Pecos Museum at 1<sup>st</sup> street and US285 North; *admission included in Caravan Fee*. Ample parking. Pecos Cantaloupes enjoy comparable status with Maine Lobster, French Wine and Swiss Cheese. The harvest season ends in September, but some may still be available.

**Mentone:** Alt. 2683 Population 30, the only town in Loving County, is the County Seat. Visit the court house . Most of the caravan members ate hamburgers across the street from the court house. Best in town; the only ones in town, but they were GOOD. There is a nice roadside park just west of town.

**Melaga, New Mexico:** Alt. 3050 A short cut from here to Carlsbad Caverns. **CAUTION:** There is no fuel from here to El Paso.



**Carlsbad:** Alt. 3111 Good place for supplies and fuel. If you have time, there is a nice walking tour of downtown Carlsbad. You may want to visit The Living Zoo and Gardens Park on the north edge of town. Allow 1 - 1 ½ hours. Don't forget the Bat Flight at 6:30.





# CARLSBAD CAVERNS TO MISSION RV PARK

El Paso, Texas 79928 915-859-1133

September 30 - October 1 & 2, 2007

*Starting at 840 Newman Line  
138272*

Route Miles 138 Parking After 3:00PM

US180/62 South from park to McKittrick Canyon Road 28  
*McKittrick Canyon Nature Loop Hike 0.9 miles Moderate*

US180/52 South to Guadalupe Mountains N.P. Visitors Center 7  
*See Texas Travel Guide listing under Pine Springs*

US180/62 South to Junction Texas 54 9  
*Great views from roadside park on the right*

US180/62 West to Cornudas 32  
*Plan to stop and visit with May Carson*

US 180/62 West to Loop 375 South (El Paso) 49  
*RR2775 North to Hueco Tanks*



Loop 375 South to Rojas Drive 11

*144A*  
Exit to Rojas Drive, left under Loop 375 to RV Drive 1

Right on RV Drive to RV Park Entrance

## SCHEDULE OF ACTIVITIES

Sunday After Arrival - Free Time

Monday 9:30AM Car Pool to Mission Tour *1:00 over*  
5:30PM Car Pool to Cattlemen's Steakhouse

Tuesday 9:00AM El Paso-Juarez Trolley to Mexico  
*6:00PM Driver's Meeting / Ice Cream*

10/3 EARLY CREW TO FORT DAVIS ADAMS WILLIAMS HANSON WATTS

10/3 CABOOSE CREW TO FORT DAVIS WILSON, GORDON, PHIL

# CARLSBAD CAVERNS TO EL PASO

## Sights to See on the Way

★★**GUADALUPE MOUNTAINS NATIONAL PARK:** Alt. 8749 at El Capitan.

Page 29

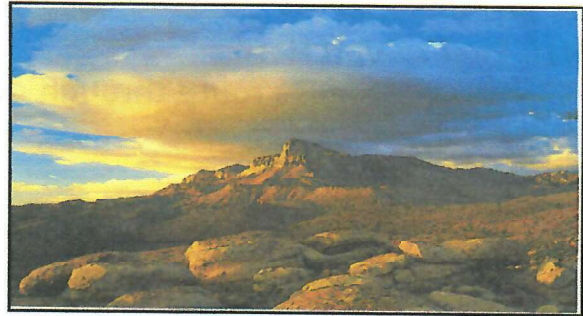
This 76,000 acre park contains everything from cactus flower blooms on the desert floor to sparkling pools with reflections of brightly colored trees and twisting canyons to mountain top dense forest growth. The Visitor's Center contains numerous entertainment venues and short hiking trails.

**SALT FLATS:** Alt. 3715 Extensive surface salt deposits have been used by white men since the mid 1600's. Numerous "Salt Wars" have helped maintain Fort Bliss as a permanent US Army base.

Page 29



Texas Salt Flats



El Capitan, Guadalupe Mountains

**DELL CITY:** This region known as the "Valley of the Hidden Waters" after the 1948 discovery of the underground reservoir. Massive cotton and vegetable farms thrive.

**CORNUDAS:** This townsite and the surrounding 100 acres are owned by May Carson, a former Airstream employee. You will enjoy a stop here and the visit with May. Don't pass up a Cornudas Burger if you are hungry.

**HUECO TANKS:** For centuries this was a strategic stop for water in this arid region. Tours are available, but you can not take your trailer to many places in the park Page 20

**BIGGS ARMY AIRFIELD:** Museum contains a history of US NCO Corps back to the Revolutionary War. No Admission Charge.

★★**FORT BLISS:** Active military base. Artillery Museum contains a large display of air and missile defense equipment from WWII to the present. No Admission Charge.

★★**WYLER AERIAL TRAMWAY;** Get an eagle eye view of Texas, New Mexico and Mexico. A great place to view the sunset. Check on Sunday availability .

**EL PASO:** Alt. 3,762 The caravan kitty fee includes an El Paso-Juarez Trolley Tour from and return to the RV Park. There are many opportunities for sight-seeing in El Paso area.

**IT IS OUR RECOMMENDATION THAT YOU DO NOT TRAVEL TO JUAREZ ALONE. DO NOT DRIVE YOUR CAR TO MEXICO.**



# EL PASO TO DAVIS MTN. STATE PARK

Fort Davis, Texas 79734 432-426-3337

October 3 - 5 , 2007

ROUTE MILES: 210    PARKING AFTER 4:00PM

Exit RV Park to Loop 375 South to Alameda (Texas 20)	3
Turn right from park, left on Rojas and left on service road	
Texas 20 East to junction with IH10 at McNary	46
IH10 East to Van Horn	61
Take business route through downtown	
US 90 South to Marfa	74
Good roadside park on right near Valentine	
Texas 17 North to Fort Davis	21
Texas 118 West to State Park Entrance	5

## SCHEDULED ACTIVITIES

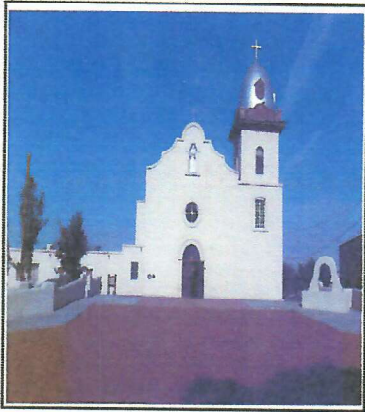
Today		After Dark: See the "Marfa Lights" Take chairs and refreshments.
Thursday	8:30AM	Indian Lodge Breakfast Tour Fort Davis Historical Site Visit Chihauhauan Desert Center(admission) Visit downtown Fort Davis
Friday		Drive the Scenic Loop, visit Balmorhea
	1:00PM	Guided Tour of Observatory from Visitor Center
	6:00PM	<i>Drivers Meeting in park</i>
	8:00PM	Car-Pool to Observatory for Star Party (Wear or take coat.)

10/6 Early Crew to Big Bend    ADAMS    DUFFY    JARRELL    HICE

10/6 Caboose Crew to Big Bend    GANTT    WATTS

# EL PASO TO FORT DAVIS

## Sights to See Along The Way



**YSLETA TO McNARY:** El Paso's Lower Valley Road is the site of the graceful and historic Spanish Missions we have visited. The Tigua Indian Reservation is the oldest community in Texas. The valley has been a fertile farming area since the late 1600's. Border crossings, both legal and illegal, are numerous in this area. The cotton farms in this area are some of the most prosperous and productive in The United States

**SIERRA BLANCA:** Alt. 4,512 The Hudspeth County Courthouse is the only in-use governmental adobe structure in the Southwest. The railroad terminal built in 1882 is now a County Museum.. Change

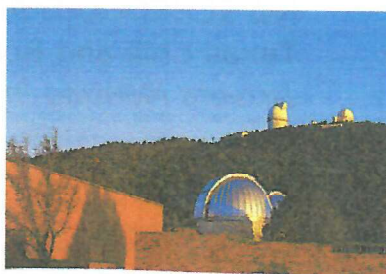
back to Central Time in this area.

**VAN HORN:** Alt. 4,010 This is a popular stop for East to West traffic and for North to South travelers. It is surrounded by The Van Horn, Sierra Diablo and Apache Mountains. Chuy's Restaurant located on IH10 Business Route downtown became famous as a cross country stop for John Madden in his travels as an NFL announcer. If you remember, he would not fly, but traveled the USA in a converted bus - motor home. When you are back in this area travel on Texas 54 North to Carlsbad Caverns. Fabulous ranching country.

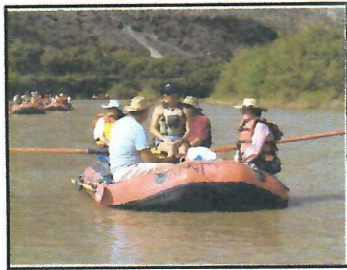
**VALENTINE:** Alt. 4,590 Est. There is a roomy roadside park just south of Lobo before you get to Valentine. The US Post Office in Valentine does a land office business each February in postmarking Valentines. Send your valentines with postage to the Postmaster to be postmarked from here.



**MARFA:** Alt. 4,688 Check out the Piasano Hotel while in town. It served as headquarters during the filming of the movie "Giant". The Marfa Golf Course at 4,882 feet is the highest golf course in Texas. An expanded viewing site for "The Marfa Lights" ,first reported in 1883, is located 8 miles east of town on US90. You need to see this.



**FORT DAVIS:** Alt. 5,050 There is more to see in this area than we have time for. National Historic Site. Hotel Limpia. McDonald Observatory, Scenic tour on Texas 118, Downtown Fort Davis, The Drugstore, Village Greenhouse, Blue Mountain Winery , sunset from atop the mountain in the Park, hike to Fort Davis, visit San Solomon Springs in Balmorhea, sit and watch the wild life roam the park.



# FORT DAVIS TO BIG BEND R V PARK

Study Butte, Texas 79582 432-371-2218

October 6 - 10, 2007

Route Miles 109

Parking After 2:00PM

Exit RV Park to Right to Fort Davis 5

Texas 118 South to Chihuahuan Desert Center 4

Texas 118 South to Alpine 22

Texas 118 South To Study Butte 78

Best price for fuel at two stations at  
Corner of US90 & Texas 118 South



## SCHEDULED ACTIVITIES

Saturday After Arrival

5:00PM

Sunday

Monday 8:30AM

7:00PM

Tuesday 8:30AM

Wednesday

6:00PM

7:00PM ???

*West entrance*

Pick Up Park Pass and Big Bend Information  
At Panther Junction Park Headquarters. (Park  
Pass refund from caravan leader)

Welcome to Big Bend hosted by RV Park

**NO SCHEDULED ACTIVITIES**

Bus pick up at RV Park for River Trip

Terlingua Star Light Theater Dinner

Car-Pool to Fort Leaton-Presidio and return via  
Camino Del Rio Highway

**NO SCHEDULED ACTIVITIES UNTIL 6:00PM**

Texas Chili and Border Buttermilk in clubhouse.

*Drivers Meeting in Clubhouse*

We recommend The Chisos Basin Lodge Restaurant for food and gifts.

10/11 Early Crew to Langtry

ADAMS WILSON NUNN LaROCCA

10/11 Caboose crew to Langtry

BROCK GORDON, DON

**PET OWNERS TAKE NOTICE AGAIN:** Pets are not allowed on any trails in the park and must be on a  
leash at all times. **TAKE CAUTION:** Wild animals roam the park. Do not leave your pet outside  
unattended.

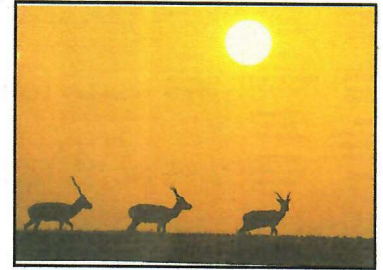


# FORT DAVIS TO BIG BEND

## Sights To See Along The Way

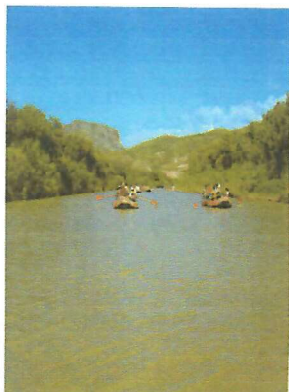
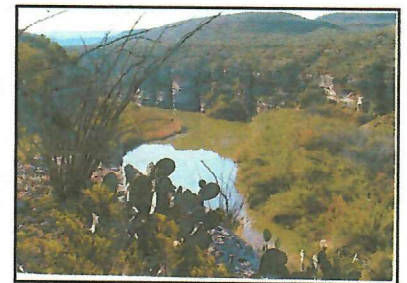
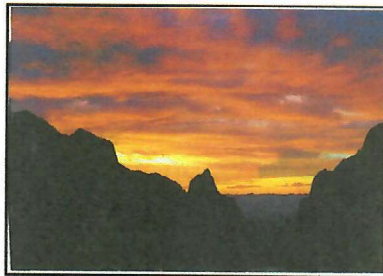
**CHIHUAHUAN DESERT VISITOR CENTER:** A SELF-GUIDED TOUR of the Botanic Gardens takes about one hour. There is a small admission fee. If it is in the Cactus Family, you will see it here. Interesting gift shop. Trail hikes up to four hours in length.

**ALPINE:** Alt. 4,485 Alpine is a designated Texas Main Street City. It is the retail center for a huge ranching and mining area. Sul Ross University Museum of The Big Bend is worth a visit. Free admission. Open on Saturday. The Apache Trading Post on US90 West is interesting. Watch "The Marfa Lights" video.



**WOODWARD AGATE RANCH:** Are you a rock hound? This is your place. Hunt and collect on more than 3,000 acres. Located on the right eighteen miles south of Alpine on Texas 118.

**BIG BEND NATIONAL PARK:** Alt. 1,850 - 7,825 This huge park encompasses more than 800,000 acres with spectacular canyons, mountains, desert and woodlands. Be sure to check your fuel before leaving Study Butte. The Visitors Center at Panther Junction is 26 miles from Study Butte. Lajitas at the West Entrance is more than 100 miles from LaLinda on the East side of the park. Santa Elena Canyon is a great picnic spot. Chisos Basin and The Lodge Area have many sights including live javalina.

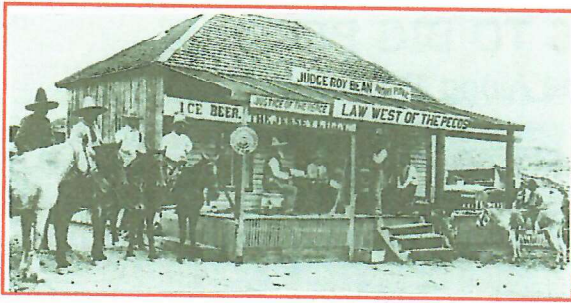


**STUDY BUTTE:** Alt. 2,500 (Stew dy Beaut) **TERLINGUA:** Alt. 2,720 Civilization came slowly to this area. Both towns thrived on the mining of mercury until the early 1940's. The boom tapered off. Crumbling stone houses and buildings create a ghost town at Terlingua. Note the Airstream Trailers scattered across the landscape. The Annual Chili Cook Off in early November draws many visitors and participants. You may want to return for this. The main attractions are The Terlingua Trading Post and The Star Light Theater.

**LAJITAS:** Alt. 2,440 Barton Warnock Center offers an Archeological and Historical profile of the Big Bend Region. Maps, books and other material is available. There is an admission charge. Be sure to meet the Mayor of Lajitas.

**PRESIDIO:** Alt. 2,594 The only legal border crossing between El Paso and Del Rio is Ojinaga, Mexico. Fort Leaton State Historic Site is nearby. The US Weather Station in Presidio used to report the hottest spot in The USA each day. The drive from Lajitas to Presidio via The Camino Rio Del Hiway is listed as one of the top ten scenic drives in the US. We will stop for pictures a number of times.





## BIG BEND TO LANGTRY

October 11, 2007

ROUTE MILES 219

PARKING AFTER 3:00PM

Exit park to left on Texas 118 to Panther Junction	28
US385 North to Park Entrance/Exit	26
US385 North to RR 2627	3
RR 2627 East Round Trip to Hallie Stillwell Place	10
US385 North to Roadside Park on left	26
US385 North to Marathon	11
US90 East to Sanderson ( <b>Careful about your speed</b> )	54
US90 East to Langtry Loop (watch for exit)	60
Langtry Loop to Visitor Center, right on gravel road to park	1

### SCHEDULED ACTIVITIES

Dry Camp, No Water, No Sewer, No Dump  
(Full Hook - Ups Tomorrow Night)

**7:00**                      *Drivers Meeting*

10/12 NO EARLY CREW TO DEL RIO. TRAVEL ON YOUR OWN.

10/12 NO CABOOSE CREW TO DEL RIO.

# BIG BEND RV PARK TO LANGTRY

## Sights to See Along the Way

**HALLIES HALL OF FAME MUSEUM:** I recommend this side trip. Relics and mementos seen here chronicle almost 100 years of life for her on this Big Bend Ranch. She came here as a young bride in 1918 and raised her family on the ranch.



**ROADSIDE PARK ON THE LEFT:** The markers tell an interesting story about the geological formations in this area. Field glasses will be helpful.

**MARATHON:** Alt. 4,043 Take a left on US90 as you enter town. Make a U-turn at an appropriate place and park headed East on US90. Tour The Gage Hotel and have lunch in their dining room if it is lunch time. Find out about this history of this hotel. Do not miss Shirley's Burnt Biscuit. The Fried Apple Pies are to die for. Many other goodies. She likes to talk. Visit the book store and sit for awhile to watch the traffic go by. There is a local museum if you are interested.



**SANDERSON:** Alt. 2,980 **Be cautious of your speed as you enter and leave town.** They would be happy to take some of your money. The State Legislature has designated Sanderson as "The Cactus Capital of Texas." Check on your fuel while here; it is still 100 miles to Del Rio and the next available fuel. Judge Roy Bean moved his saloon from Sanderson to Langtry because someone added kerosene to the whiskey barrels. Sanderson was a railroad town for many years; until a flood washed away most of the town in 1965. The town was isolated for a number of days until help could arrive.



**LANGTRY:** Alt. 1,315 This is one of our favorite stops on the caravan. The stories are endless about The Jersey Lilly, Judge Bean and Lilly Langtry. Take a walk through the Cactus Garden and hike ½ mile south on the gravel road for a fantastic view of The Rio Grande. The Visitors Center has a movie interpreting the life of Judge Bean. The Scenic Overview on the right after you cross the Pecos River has ample parking. You can visit before or after Seminole Canyon and Fate Bell Tour. **The tour for Seminole**

**Canyon is at 10:00AM tomorrow. This is the most strenuous event on the caravan. There is plenty to see at the Park Headquarters without going on the Canyon Tour.**



# LANGTRY TO HOLIDAY TRAV L PARK

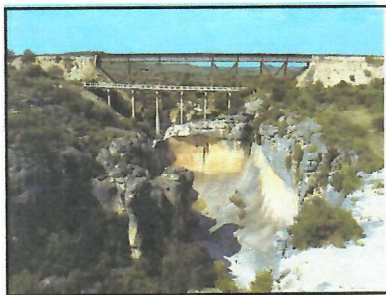
Del Rio, Texas 78840 830-775-7275

October 12-14, 2007

ROUTE MILES 50

PARKING AFTER 12:00 Noon

Exit to Langtry Loop East to US90	2
US 90 East to Pecos River	18
Pecos River to Seminole Canyon State Park	2
Seminole Canyon to Trav L Park	28



## SCHEDULED ACTIVITIES

Friday 10:00AM Guided Tour - Seminole Canyon  
*If you are unable to make the tour there is plenty to see and do in the Museum, gift shop and picnic area.*

Saturday ??????AM Visit Ciudad Acuna, Mexico  
*Details to be arranged, hopefully after we arrive on Friday.*

7:00 PM Sunday *Drivers Meeting*

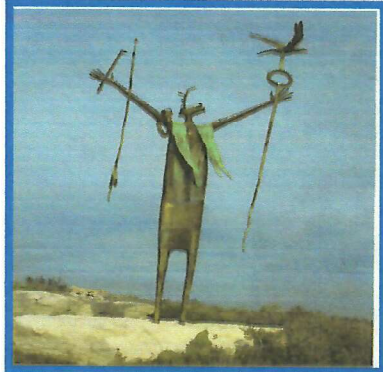
10/12 Early crew to Rio Frio ADAMS CONNORS GUBRUD BURKE

10/12 Caboose Crew to Rio Frio KINDLE QUINTANA

# LANGTRY TO DEL RIO

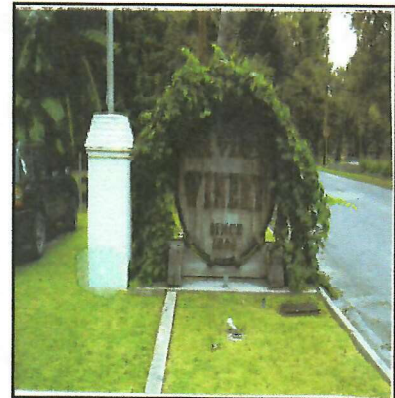
## Sights To See Along The Way

**PECOS RIVER SCENIC OVERLOOK:** A spectacular view of one of the most formidable barriers to early-day travel, The Pecos River Canyon. There is parking in the viewing area and turn around space. The railroad originally crossed the river through a series of tunnels. Southern Pacific Railway constructed the first bridge across the Pecos in 1892. It was 321 feet above the water and 2,180 feet long. It was touted as "The Eighth Wonder of the World."



**SEMINOLE CANYON & FATE BELL SHELTER:** Rugged limestone terrain and spectacular canyons contain some of North America's oldest rock paintings. The tour of Fate Bell Shelter at the bottom of the canyon is the most strenuous event on the caravan. The tour is about 3 hours. Take a look at the steps into and out of the canyon to help you make a decision. Life size dioramas in the Visitor Center tell the history of this area thousands of years ago. There is a nice picnic area and the Parks Store has unique gifts and books.

**DEL RIO:** Alt. 948 Del Rio bills itself as "The Best of The Border". See the Del Rio Guide for area attractions. Val Verde Winery, owned by the same family for over 100 years, specializes in Tawny Port Wine. Wine tasting is available from 10:00 to 5:00PM Friday and Saturday. Whitehead Museum in the downtown area and San Felipe Springs are interesting places to visit. There is a tough nine hole golf course at San Felipe Springs. Good places to eat are Luby's Cafeteria, Cripple Creek Restaurant and Wrights Steak House. You will pass all of these on your way into town. Del Tex RV & Auto on Highway 90 is a good place for supplies and repairs. Tell them you are with The Gone To Texas Caravan.



**CIUDAD ACUNA MEXICO:** **BORDER CROSSING MUST:** Do not take any firearms or drugs across the Texas/Mexico border. If you drive your vehicle across the border be sure to purchase temporary insurance for Mexico coverage. You can park your auto on the US side of the border and walk across the border (about 1/2 mile) or you can ride the Mexican Bus after crossing the border. A taxi for four will cost about \$10.00. The main street is Avenida Hidalgo. You will find many shops stocked with baskets, pottery, leather goods, liquor, prescriptions jewelry, etc. Do not hesitate to bargain with the shopkeepers, many of whom speak English and accept American dollars, it is an expected practice You will usually save about 1/2 the asking price. Have some fun. The Crosby Hotel and Dining Room is on Hidalgo. When I use a taxi I ask to go to the Crosby. The restaurant here is exceptional.



# DEL RIO TO RIVERSIDE RV PARK

Rio Frio, Texas 78879 830-232-4006

October 15 - 16, 2007

ROUTE MILES 140

PARKING AFTER 3:00pm

Exit RV Park to US90 East to Del Rio	14
US90 East to Bracketville	32
US90 East to Uvalde	40
US90 East to Sabinall	22
FM 187 North to Utopia	21
FM 1050 West to County Road 350	9
County Road 350 South (Left) to RV Park <b>(Turn left before crossing Frio River)</b>	2



Picture is said to be the largest Live Oak tree in Texas.

## SCHEDULED ACTIVITIES

*6:00*  
~~5:00~~ PM Social Hour - Caravan Cook-Out - Show & Tell

*Tuesday*  
**October 16 7:00PM Driver's Meeting**

*Cook-Out - Phil*  
10/17 Early Crew to Fredericksburg ADAMS GORDON, PHIL ROTHE WILLIAMS *Don Gordon*

10/17 Caboose Crew to Fredericksburg HANSON JOHNSON

# DEL RIO TO RIVERSIDE RV PARK

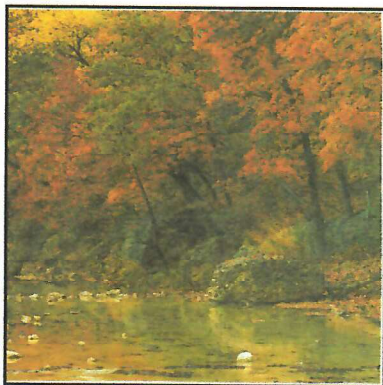
## Sights to See on the Way

**BRACKETVILLE:** Alt. 1,110. The Seminole Indian Scout Cemetery is 3 miles south of US90 on FM Road 3348. Graves here include four Medal of Honor winners. There is parking and turn around space. Fort Clark Springs is a resort-retirement community with an RV Park. The location makes it attractive to many Winter Texan. Alamo Village is north on RM 674. Originally built as a set for John Wayne's movie "The Alamo." The set is still used for movies, television and TV commercials. There is an admission fee. Bracketville is a hunting mecca for white tail deer, wild turkey and javelina. We are now leaving The Chihuahuan Desert and Big Bend climate and entering The Texas Hill Country. You will notice the difference.

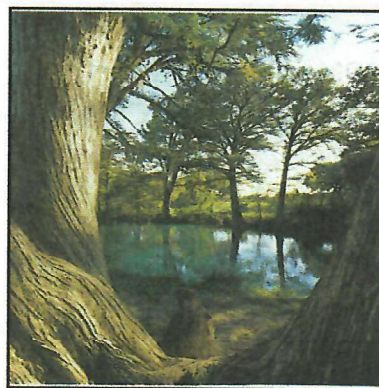


**UVALDE:** Alt. 913. Uvalde is located at the intersection of two of the nation's longest highways; US90 from the Atlantic to the Pacific and US83 from Mexico to Canada. It is the home of former Vice-President John Nance Garner. He served two terms with FDR. His home and museum are located at 333 N. Park. Admission is free. Ample parking. The Briscoe Art and Antique Collection located in The First State Bank is extensive. Visitors are welcome. Go past courthouse and turn left on Wood Street. Parking is available on city streets. You will enjoy their hospitality. On occasion there is a bake sale in the lobby for some local charity. Sit in the lobby and enjoy the sights of a Ranch Country Bank. This could be a two hour visit.

**SABINAL, UTOPIA, RIO FRIO, CONCAN, LEAKEY, VANDERPOOL, CAMP WOOD, LOST MAPLES STATE PARK:** The many scenic drives in this area will more than occupy your time while we are visiting Riverside. FM Road 337 from Camp Wood to Medina is not recommended for RV's. After we leave Rio Frio we will be on the North East Corner of this area so do not worry about not being able to see everything while you are here.



LOST MAPLES STATE PARK



SABINAL RIVER



MEDINA RIVER



# RIO FRIO TO FREDERICKSBURG

## Sights to See on the Way

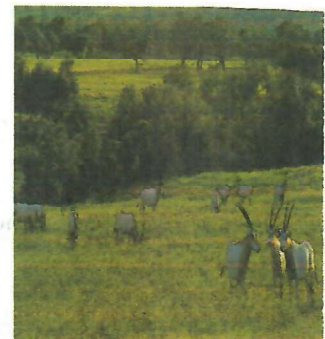


**LEAKEY:** Alt. 1,609 Picturesque setting in the rugged Edwards Plateau. Elevation ranges from 1,500 to 2,400 feet with deep canyons cut by The Frio and Nueces Rivers. Many Cypress trees in this area. Ranching features registered Angora Goats and their prized Mohair. The cool clear rivers are well-known for flash flooding in the spring and summer. This is a popular area for camping. Stop and wade in the river. There is a scenic roadside park approximately 12 miles north of Leakey. ***FM ROAD 337 IS NOT RECOMMENDED FOR RV TRAVEL.***

**LEAKEY TO JUNCTION:** Alt, 1,710 Texas 41 takes you through the heart of Texas deer and wild turkey country. Kimble County has more flowing streams than any other county in Texas. About 20 miles north of the junction with Texas 41 on US377 is another scenic roadside park worth the stop. South Llano River State Park 4 miles south of Junction is closed in October for the Wild Turkey Mating Season. Junction is on the eastern edge of the desert area, to the East lies the green hill country. Local resident refer to this as "The Land of the Living Waters because of the junction of The North & South Llano Rivers.



**FREDERICKSBURG:** Alt. 1,743 Attractions in this area are numerous and varied. The National Museum of The Pacific War, LBJ Historical Parks (two), Wineries, Wild Seed Farm, Herb Farm, Enchanted Rock, Great German Food, Luckenbach, Historic district, Butterfly Farm and much more. We will see you downtown at The Ice Cream Parlor or The Five & Dime Store. Plenty of benches for sitting and looking.







# FREDERICKSBURG TO SKYLINE RV PARK

Bandera, Texas 78003 830-796-4958

October 19 - 21, 2007

ROUTE MILES 114

PARKING AFTER 3:00PM

Exit RV Park to right on Highway Street to US 290	1
US290 East to LBJ Historical Park (Exit RR1)	16
Continue on RR1 East to US290 to Johnson City	14
US281 South to Blanco	14
US281 South to Junction Texas 46	22
Texas 46 West to Boerne	22
Texas 46 West to Junction Texas 16	11
Texas 16 West to Bandera	12
Texas 16 West/North to Skyline RV Park on left	2

## SCHEDULED ACTIVITIES

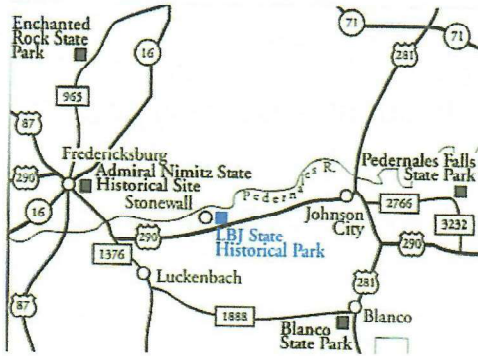
October 20	No Scheduled Activities
October 21	8:00AM Charter Bus to San Antonio 10:00AM River Barge (2 Barges) at Hyatt Hotel River Level (Across from Alamo) 5:00PM Alamo Plaza - Board Bus for return To Bandera.
October 22	<i>8:00AM Driver's Meeting</i>

10/22 Early Crew to Ingram ADAMS NUNN WATTS BROCK

10/22 Caboose Crew to Ingram DUFFY JARRELL

# FREDERICKSBURG TO BANDERA

## Sights to see Along the Way



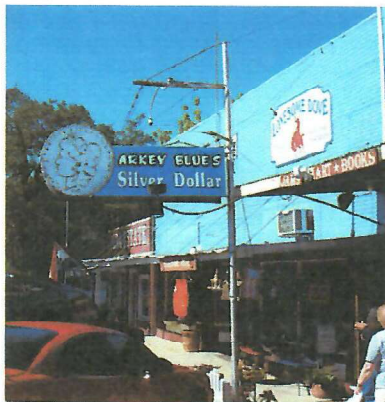
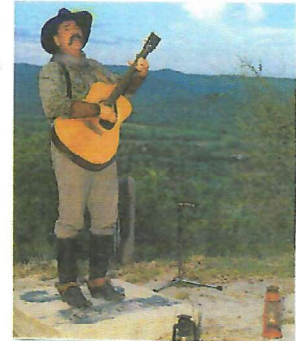
**LUCKENBACH:** Alt. 1,561 South on FM 1376 from US290 East. An out of the way country hamlet preserving a rich piece of Texas history. One unpainted general store, post office and beer tavern became known virtually world wide because of a song by Willie & Wayland. "Let's go to Luckenbach, Texas".

**STONEWALL:** Alt. 1,512 Becker and Grape Creek Vineyards are accessible from US290. LBJ National Historical Park rests along the scenic banks of the Pedernales River. Take RR1 to the Visitor Center. There is ample parking. Gift store, interpretive center and guided tours are available; maybe a two hour stop if interested.

**JOHNSON CITY:** Alt, 1,197 Best known as the hometown of President Johnson. His birthplace and visitor center are located between avenues F & G south of US290.

**BLANCO:** Alt. 1,350 Antique stores, flea markets and artisans abound. The court house (County Seat moved to Johnson City) and 37 other buildings on or near the square are listed in the National Register of Historic Places. Court house tours may be available.

**BOERNE:** Alt. 1,405 BER-nee was settled by German pioneers in the mid 1800's. Plenty of exhibits of antique farm equipment. The town hosts year-round cultural events. Good places to eat. Our favorite is PoPo's restaurant located on IH10, 7 miles west of town. Take The Welfare Exit. U turn and return to Boerne to continue to Bandera.



**BANDERA:** Alt. 1,258 Rightly named "Cowboy Capital of the World". What ever you have heard about Bandera is probably true. There are numerous Guest (Dude) Ranches in the area. Frontier Times Museum, OST Restaurant for John Wayne fans, Arkey Blues Silver Dollar, a real Texas Honky Tonk, western wear, window shopping will occupy your time and help you spend money. Scenic drives in any direction: Texas 173 north or south, Texas 16 to Medina and Kerville, FM roads 337 and 470 west. **Texas 16 from Bandera to Kerville not recommended for RV'S. Make the trip in your auto and return to Bandera via Texas 173.**



## BANDERA TO BLUFF TRAILS RANCH

Ingram, Texas 78025 830 367 5656

October 22 - 24, 2007

ROUTE MILES 50 PARKING AFTER 12:00 NOON

**NOTE: TEXAS 16 FROM BANDERA TO KERRVILLE IS NOT ACCESSIBLE TO MOST RVS.**

Exit RV Park to right to Texas 16 to Bandera	2
Texas 173 North to Junction with Texas 16 in Kerrville ( <i>Watch for the entrance on the left to The National Center for Western Art. No RV Parking. You should see these exhibits.</i> )	26
Texas 16 North to Junction Texas 27	2
Texas 27 West (left) to Ingram	7
Texas 27 West to Bluff Trails Ranch Entrance on left	11
Private Ranch Road to RV Park ( <i>Go past Johnson Creek Resort on your right, follow road across Johnson Creek to RV Park.</i> )	2

### SCHEDULED ACTIVITIES

<b>TODAY (Monday)</b>	<b>8:00AM Last Driver's Meeting</b>
Bluff Trails	No scheduled activities
Tuesday	8:30AM Car Pool to Y O Ranch Take Camera and Water Bottle. Leisurely return to Bluff Trails on FM1340 Via Easter Island, Stone Henge and Hunt.
Wednesday	Last day of caravan. 5:00PM Happy Hour on Patio. Catered Dinner in Club House
Thursday	<b>HAVE A SAFE TRIP TO YOUR NEXT DESTINATION.</b>

# BANDERA TO INGRAM

## Sights to See Along the Way

**CAMP VERDE:** Alt. 1,800 At the intersection of Texas 173 and FM480. A former Army post for the famous Army Camel Experiment to use camels for transportation to Fort Yuma, Arizona; abandoned in 1869 as not practical. Old fashioned general store and post office attract many visitors.



**KERRVILLE:** Alt. 1,645 One of the state's most popular recreation areas; believed by many to have the most ideal climate in the nation.. The Museum for Western Art has permanent and rotating collections that you should not miss. Visitors are welcome at James Avery Jewelry Manufacturers. Take the scenic drive on Texas 16 from Kerrville to Medina and see what you missed with your RV. There is a vintage Gibson Store in Kerrville that I have to visit on each trip, Hiway 27 west from junction with 16.

**INGRAM:** Alt. 1,600 A trade center for many summer camps for boys and girls and vacation retirement homes. Low water crossings on the Guadalupe River offer many opportunities for picnics and wading in the river. Art studios, galleries and antique stores are located in Ingram.

**MOUNTAIN HOME:** Alt. 2,135 Established to serve surrounding ranches with staple foods and supplies. Still provides much of the same service in a sparsely populated area of several large ranches.



Y.O. RANCH ENTRANCE FROM TEXAS 41



**Y.O. RANCH:** We will spend most of the day touring the ranch, watching game and eating lunch at The Ranch Chuck Wagon. The Ranch today consists of approximately 40,000 acres.(Originally 550,000 acres) The ranch contains approximately 10,000 animals of 55 species including wildebeast, oryx, adaox, Japanese sikd, aboudad, black antelope, ostrich, giraffe, zebra, and Watsui cattle to name only a few. Hunting safaris on the Ranch guarantee success or there is no charge.



**HUNT:** Alt. 1,625 Return to Bluff Trails via FM 1340 from Texas 41. The road twists and turns with repeated crossings of The Guadalupe River. Continue on to Ingram via Teas 39



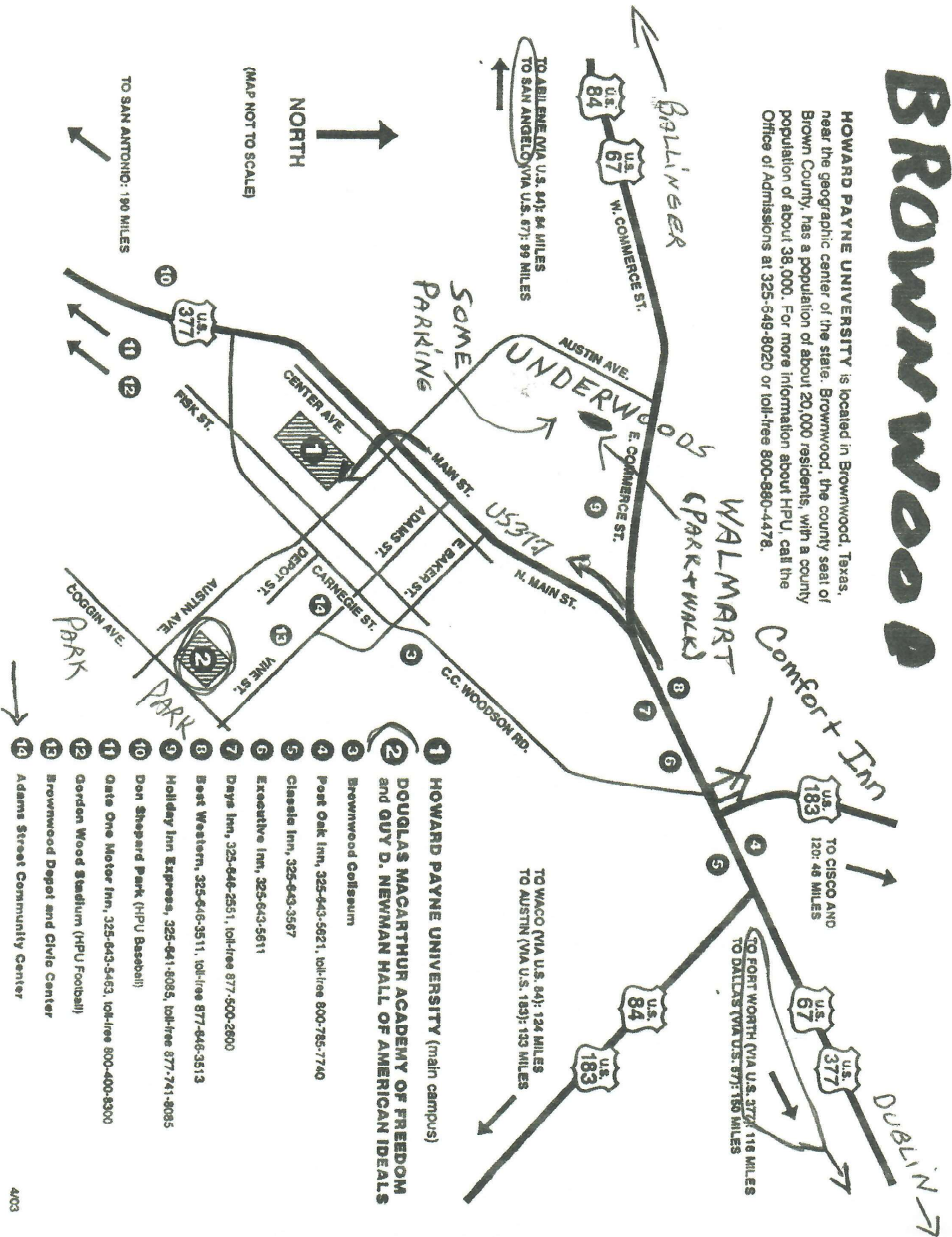
## **GONE TO TEXAS CARAVAN**

Guidelines for a safer and better caravan

1. **ARRIVAL TIME:** Do not arrive at the park before the stated arrival time. This will allow the work crew time to sight-see during the day and to settle into their parking places before the rest of the caravan arrives.
  
2. **CABOOSE:** The caboose will consist of at least two units each day that we move to another park. It will be the last to leave the park and will travel the assigned route to care for stragglers. The caboose will check each unit as it leaves the campground for steps down, antennas up, tow bars loose, safety chains not hooked, directional lights, stop lights, headlights and other safety features.
  
3. **CAR POOL:** We will have numerous occasions for use of car pools. This eliminates extra cars that could cause a parking problem. Please try to include everyone in a car pool.
  
4. **CB RADIO:** The caravan CB channel will be #14. Please turn to this channel when nearing the campsite for any instructions for parking. Any announcements that need to be made will be broadcast on channel 14 at 9:00PM each evening.
  
5. **CELL PHONE:**  
Most caravaners have a cell phone. Their number is listed on the Caravan Roster. This is an excellent way to communicate at distances not allowed by the CB.
  
6. **CONVOYING:** DO NOT travel in convoy style. Travel with 2 to 4 rigs in a group. Many highways are two lanes. Leave plenty of room between units. Some drivers are impatient, watch for places to pull over to let them pass. Inform others of dangerous problems. We are not in a hurry. Drive safely.
  
7. **COOK-OUTS:** Bring sets-ups, drinks and chairs for all cook-outs.
  
8. **DRIVERS MEETINGS:** There will be a driver's meeting each night or morning before we move. See the daily schedule for time. Please bring your driver's manual to all meetings.
  
9. **DRIVING AT NIGHT :** Driving at night can be hazardous in West Texas. Wild game roam the highways freely. They can cause severe damage to your vehicle. Be alert and drive cautiously.

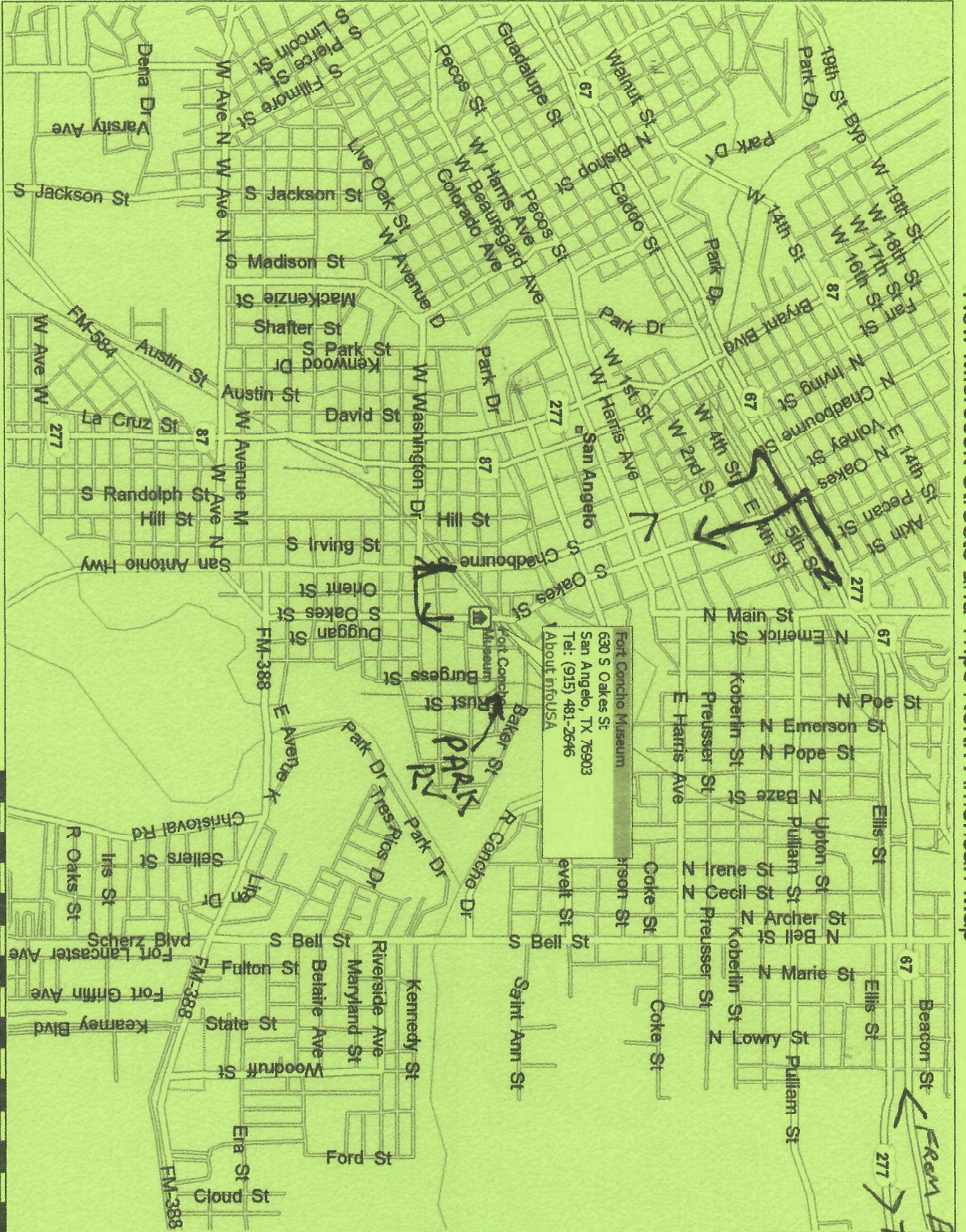
# Brownwood

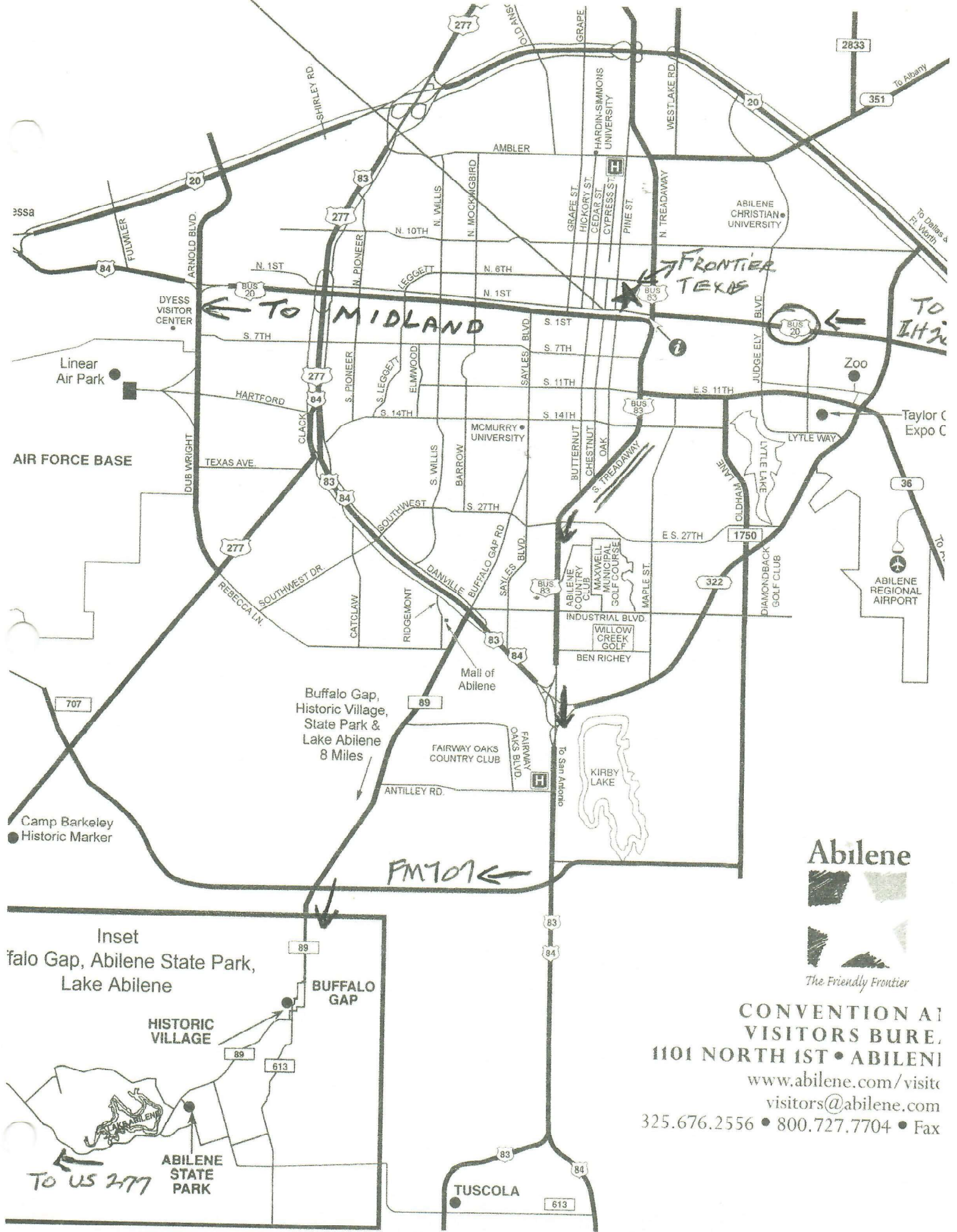
HOWARD PAYNE UNIVERSITY is located in Brownwood, Texas, near the geographic center of the state. Brownwood, the county seat of Brown County, has a population of about 20,000 residents, with a county population of about 38,000. For more information about HPU, call the Office of Admissions at 325-648-8020 or toll-free 800-880-4478.



# SAN ANGELO, TX

## New Microsoft Streets and Trips North American Map



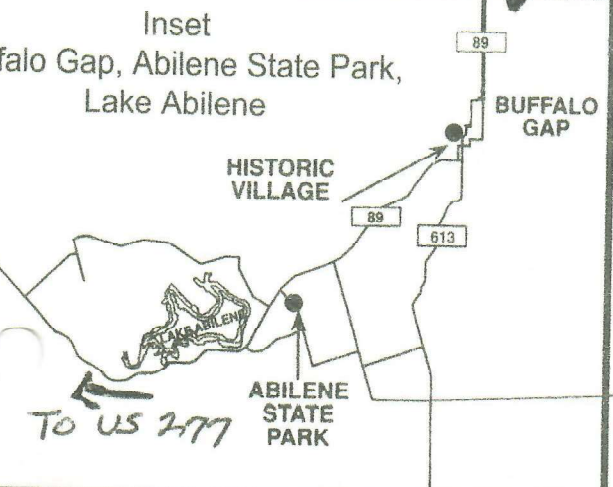



← TO MIDLAND

★ FRONTIER TEXAS

← TO I-35

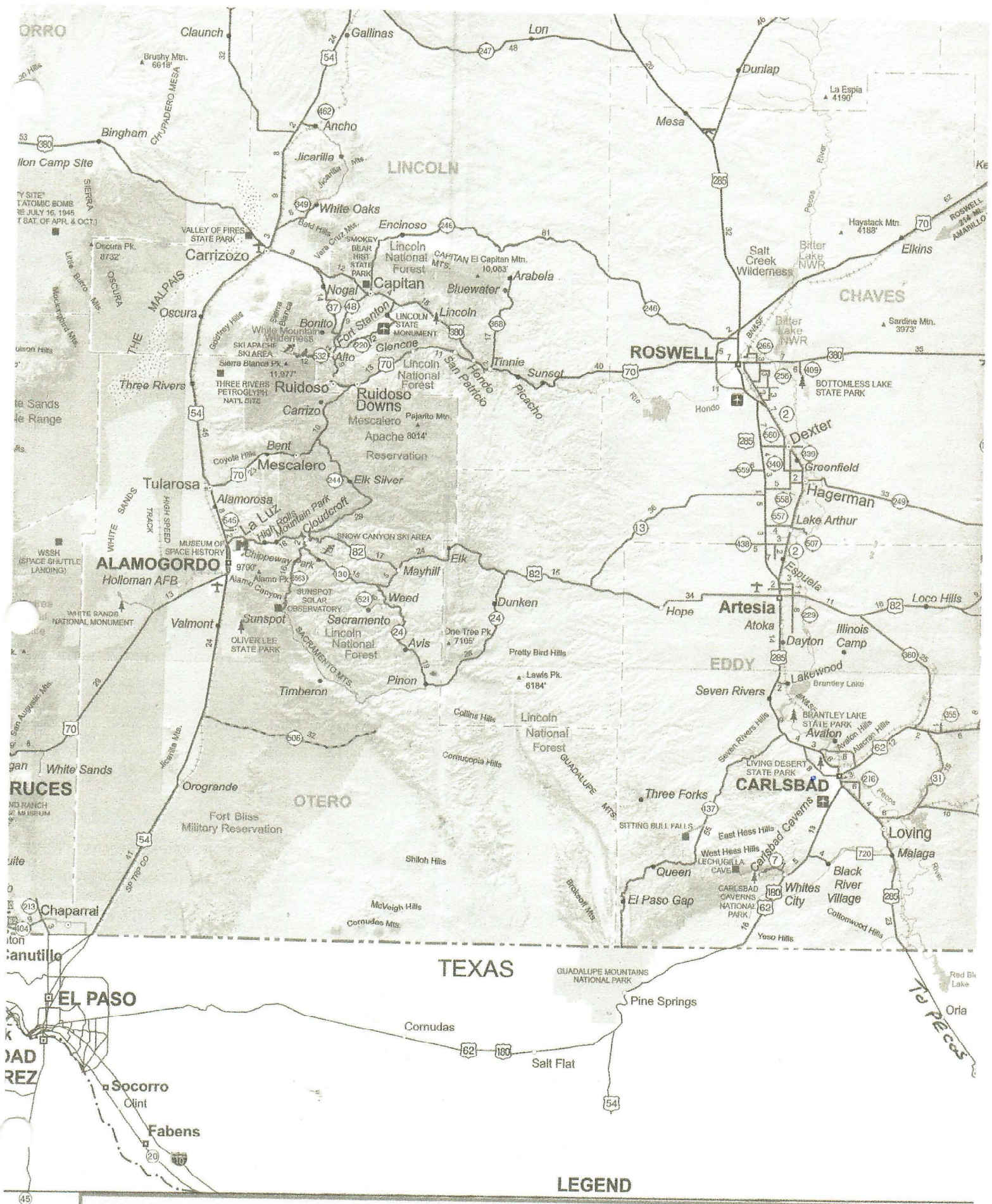
FM 707 ←











**Abilene**  
  
*The Friendly Frontier*

**CONVENTION AND VISITORS BUREAU**  
 1101 NORTH 1ST • ABILENE, TEXAS  
[www.abilene.com/visitors](http://www.abilene.com/visitors)  
[visitors@abilene.com](mailto:visitors@abilene.com)  
 325.676.2556 • 800.727.7704 • Fax





**LEGEND**

-  Interstate
  -  United States
  -  Parks and Monuments
  -  Points of Interest
  -  County Line
  -  Controlled Access - Divided
  -  Reservoir
  -  Cities and Towns
- 50,000 or greater in

## **CARLSBAD CAVERNS SPECIAL INSTRUCTIONS**

505 785 2232

**Sept. 28 Friday**

**6:30PM Car pool from RV Park to Caverns for the Bat Flight. Handicap parking is available. Check with park ranger. This program lasts until after dark.**

**Sept. 29 Saturday**

**8:00AM Breakfast at Fast Jacks across the highway from the RV Park. Oder from menu.**

**9:00 - 9:15AM Car pool to Visitor's Center. Read instructions below.**

- 1. If you have a National Park Pass, Golden Age, Golden Access or Golden Eagle Passport show you passport at the ticket office and pick up your tickets. If you do not have any of these you will have to purchase your ticket. The price of tickets is included in the Kitty Fee and will be refunded later.**
- 2. If you are going on THE NATURAL ENTRANCE SELF GUIDED TOUR, please assemble with \_\_\_\_\_ in the lobby area. This tour takes about 1½ hours and is about 1 ½ miles in length. A strenuous descent of 800 feet is not recommended for those with health problems. We recommend the audio guide for \$3.00 for this tour.**
- 3. Assemble with \_\_\_\_\_ in the lobby area if you are going on THE BIG ROOM SELF GUIDED TOUR. This is a 1 ½ mile tour that takes about 1 hour. The trail is mostly level and is paved. The trail is accessible by wheel chair with help. The natural Entrance Tour will meet you in the Big Room and make this tour with you. We recommend the audio guide for \$3.00 for this tour.**
- 4. After the combined tour sandwiches are available in The Big Room or in the Cafeteria at ground level.**
- 5. HAD ENOUGH? THE KING'S PALACE TOUR is available at 2:00PM or 3:00PM. Purchase tickets at ticket booth for \$8.00 each or \$4.00 each if you have a pass. The tour takes about 1 ½ hours. You must make reservations for this tour. Make your reservations when we arrive at the Caverns. Ticket price IS NOT in the Kitty Fee.**
- 6. Take the rest of the day to enjoy some of the scenic drives in this area. The Bat Flight takes place again tonight if you missed it last night.**

## EL PASO SPECIAL DRIVING INSTRUCTIONS

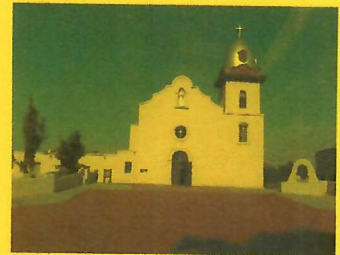
### THE MISSION TOUR BY CAR POOL MONDAY MORNING:

Enter IH10 West from RV Park to Exit 32 (Zaragoza Road). Take Zaragoza Road South (left) to Alameda Street (Texas 20). Turn left into Ysleta Mission parking lot. The Kitty Fee is making a donation to the mission. Enjoy your visit, we should be here about one hour.

Leave the parking lot and turn left onto Socorro Road. Drive approximately 8 miles to San Elizario Mission. (You will go past Socorro Mission, we will return to this.) The Mission has a small museum and park across the street. Be sure to read the plaques in the park. The Kitty Fee is also making a donation to this Mission. We will be here about an hour for visiting and use of the rest rooms.

Return to Socorro Road and drive west approximately 6 miles to Socorro Mission located on the right. Park in the Mission parking lot. This Mission has been under renovation the past two trips, but is now finished. After finishing your tour walk around the corner to The Meson de Onate Restaurant for a super Mexican lunch. This IS NOT included in the Kitty Fee but a donation to the Mission is included.

Return to Socorro Road and take Avenue of the Americas to IH10 and the RV Park.



### CATTLEMEN'S STEAKHOUSE AT INDIAN CLIFFS RANCH BY CAR POOL MONDAY EVENING.

Enter IH10 East from the RV Park to Exit 49. Turn left and cross the Interstate to the restaurant about 5 miles North. Do not park in the first place you see. Go to the top of the hill where the restaurant is located. They will have parking places marked for us. There is plenty to see in their Zoo. Dinner will be served about 6:30 and is included in the Kitty Fee. We hope you will be ready for the Trolley Trip to Juarez, Mexico in the morning.



ADIÓS

VRA 2001