

SHO-ME THE OZARKS

CARAVAN

2019



LEADERS:

Jack and Kay Garrett

Jack: 417-293-2487

Kay: 417-293-7283

CO-LEADERS:

Bob George and Annie Janesko

Bob: 443-605-3398

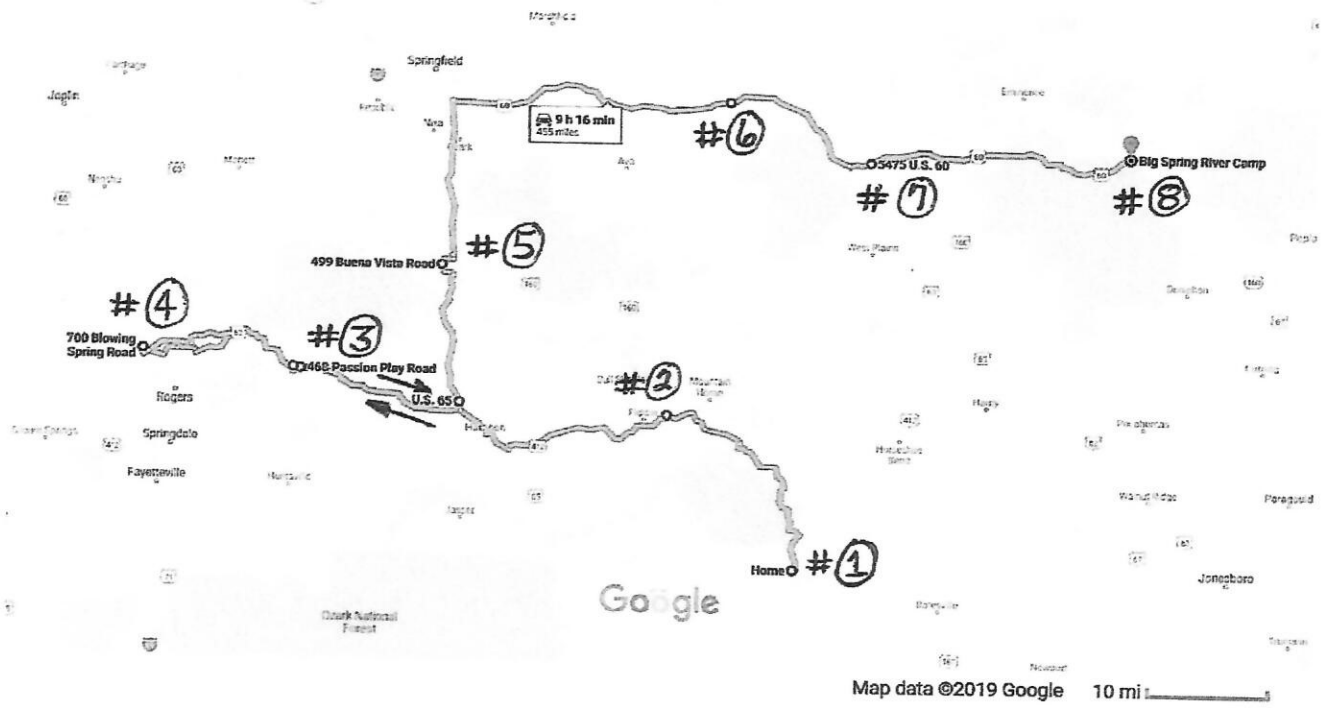
Annie: 816-820-3071

Schedule of Stops

-
- #1: 9/26-9/28 Ozark RV Park, 1022 Park Avenue, Mtn. View, Arkansas (870-269-2542)
- #2: 9/29 One overnight stay at Denton Ferry RV Park, 740 Denton Ferry Road, Cotter, Arkansas (870-435-7275)
- #3: 9/30-10/3 Wanderlust RV Park, 468 Passion Play Road, Eureka Springs, Arkansas (479-253-7385)
- #4: 10/4-10/6 Blowing Springs Park/Campground, 700 Blowing Spring Road, Bella Vista, Arkansas (479-855-8075)
- #5: 10/7-10/12 America's Best Campground, 499 Buena Vista Road, Branson, Missouri (417-336-4399)
- #6: 10/13-10/14 Missouri RV Park, 2325 Missouri Park Drive, Mountain Grove, Missouri (417-926-8452)
- #7: 10/15-10/20 Ozarks Mountain Springs RV Park, 5475 US-60, Mountain View, Missouri (417-469-3351)
- #8: 10/21-10/23 Big Springs RV Camp, 501 East Chicopee Road, Van Buren, Missouri (573-323-8328)

NOTE: Stop 5 (America's Best Campground) and Stop 7 (Ozarks Mountain Springs RV Park) are your designated MAIL STOPS.
There are no special addressing requirements; just your name in care of the parks.

Google Maps 1022 Park Ave to Big Spring River Camp Drive 455 miles, 9 h 16 min



Ozark RV Park

Mountain View AR



[Home](#) [Rates](#) [Park Map](#) [Contact Us](#)



Welcome to Ozark RV Park. We are located right next door to the Ozark Folk Center State Park in Mountain View, Arkansas. We offer a walk through gate to the Folk Center.

Mountain View is famous for it's history rich in traditional folk music, the beauty of the Ozark National Forest & Blanchard Springs Caverns, and the preservation of Ozark folk culture at the Ozark Folk Center.

Ozark RV Park is a Good Sam Park operated by family and friends that stay in our park. We are a private park near all area attractions.

We are only 3/4 mile from downtown Mountain View. There is a nature trail to the Iron Skillet Restaurant at the Folk Center from our park. *We have a fenced in pet exercise park.*

We are open from March 1st until December 1st. We are also a member of Woodalls.



[Click here to see a map of the park](#)

Good Sam Park



Andy and the gang have an impr morning jam at the Ozark RV Par Mountin View Arkansas. Listen at "Homespun" written by Tom Willa Buffalo Center Iowa. Drop by and good times. Visit YouTube for mo RV park videos!

STOP 1

OZARK RV PARK, 1022 PARK AVE, MTN.VIEW, AR 72560

870-269-2542

ARRIVAL DATE THURSDAY 9/26/19

LEAVE DATE SUNDAY 9/29/19

THURSDAY EVENTS: 9/26

3:00 PM ASSEMBLY AND ORIENTATION MEETING, AT PICKIN' SHED ON CAMPGROUND

5:30 PM- DINNER AT THE SKILLET RESTAURANT LOCATED ON FOLK CENTER GROUNDS NEXT TO CAMPGROUND WITH VARIETY OF SOUTHERN COMFORT FOOD.

7:00 PM **GAM#1**

FRIDAY EVENTS: 9/27

8:45 A.M. LEAVE CAMPGROUND FOR BLANCHARD SPRINGS NATIONAL PARK. TRAVEL NORTH ON HIGHWAY AR-5 ABOUT 5.5 MILES FROM MTN.VIEW; TURN LEFT (WEST) ON HWY AR 14 FOR 6.6 MILES; TURN RIGHT ON CO RD 54 "BLANCHARD ROAD" APPROXIMATELY 1.6 MILES FOLLOWING SIGNS TO BLANCHARD SPRINGS CAVERNS VISITORS' CENTER.

GROUP "A" TOUR BEGINS AT 10 A.M. AND GROUP "B" AT 10:15 A.M. CHECK-IN REQUIRED 30 MINUTES BEFORE TOUR. MODERATE WALKING WITH POSSIBLE SOMETIMES SLICK SURFACE. A VERY GOOD FILM AT CENTER. BE SURE TO BRING SENIOR PASS IF YOU HAVE ONE. ONE PASS IS GOOD FOR ONE DISCOUNT ON TOUR TICKET, SO, IF BOTH HAVE PASSES BRING THEM BOTH.

LUNCH IS ON YOUR OWN, BUT LOCAL RESTAURANTS HAVE GOOD VARIETY.

5:00 PM **GAM#2**

6:30 P.M. LEAVE FOR JIMMY DRIFTWOOD BARN LOCATED AT 19775 ARKANSAS HWY 5 ON NORTH EDGE OF MTN.VIEW. AN INTERNATIONALLY FAMOUS MUSICIAN AND HISTORIAN JIMMY DRIFTWOOD SPONSORED THE BUILDING OF THE THEATRE IN 1976 AS A FOLK MUSIC VENUE AND HALL OF FAME. AT HIS DEATH IT WAS WILLED TO THE UNIVERSITY OF ARKANSAS AND LATER PRIVATELY MAINTAINED. TODAY IT IS USED AS A SHOWCASE FOR DEVELOPING AREA TALENT IN FOLK AND TRADITIONAL MUSIC. THE BARN IS THE EQUIVALENT OF THE FRONT PORCH AND ALL ARE INVITED TO JOIN IN IF THEY WISH. SOME PERFORMERS ARE TERRIFIC AND SOME NOT SO MUCH, BUT THIS IS A GREAT EXAMPLE OF HOW MUSIC HAS BEEN PASSED ON.

SATURDAY EVENTS: 9/28

MORNING: AND AFTERNOON: AROUND THE GROUNDS, UNDER THE TREES, AND ON THE STREETS POP-UP JAM SESSIONS WILL ABOUND IF WEATHER PERMITS. IT IS A CELEBRATION OF MUSIC AND FRIENDSHIP AND ANYONE IS WELCOME TO JOIN IN OR JUST PULL UP A CHAIR AND LISTEN. YOU WILL HAVE TICKETS TO THE CRAFT BOOTHS AND EXHIBITS ON THE PARK GROUNDS. THESE ARE HIGH QUALITY ITEMS OF SPECIAL SKILLS AND CRAFTS. LESSONS CAN BE ARRANGED FOR MUSIC AND CRAFTING SKILLS IF DESIRED. A LARGE VARIETY OF LOCAL FOOD VENDORS ARE AVAILABLE IN THE PARK AS WELL AS IN THE TOWN.

5:00 GAM #3

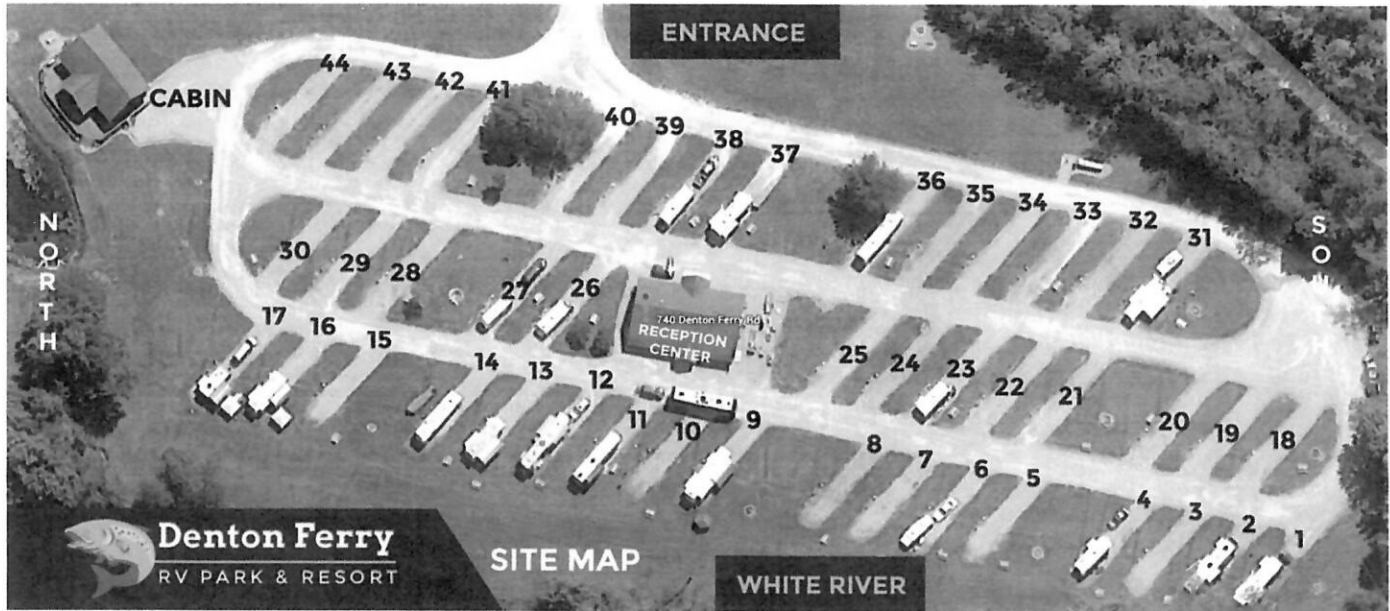
EVENING: 7 P.M. THE BIG SHOW IN THE AUDITORIUM ON THE PARK GROUNDS FEATURES HIGH LEVEL PROFESSIONAL FOLK, GOSPEL, BLUEGRASS AND TRADITIONAL MUSIC. THIS IS RECOGNIZED AS ONE OF THE TOP SHOWS IN THE UNITED STATES.

SUNDAY: 9/29 LEAVE BY 11 A.M. ARRIVE COTTER 1 P.M. TRIP WILL TAKE ABOUT 1.5 HOURS. TRAVEL NORTH ON AR-5 35 MILES; THEN LEFT ONTO AR- 201 13 MILES; THEN WEST ON US-62 APPROXIMATELY 11 MILES TO COTTER AREA. DENTON FERRY ROAD IS ON THE NORTH/RIGHT SIDE OF 62 AND THERE WILL BE A FLAGGER WHERE 62 AND DENTON FERRY ROAD MEET. THE CAMPGROUND IS A VERY SHORT DISTANCE ON YOUR LEFT AFTER TURNING ON DENTON FERRY ROAD. **DO NOT ARRIVE BEFORE 12**
NOON. FLAGGERS WILL BE ON DUTY 12 NOON UNTIL 1 PM. 1:00

PARKERS (CARNEIN, SNOW) DEPART 8:00



About the Park



Visiting the Ozark Mountains, the White River, Cotter, Arkansas, or just passing through the area? Contact us at Denton Ferry RV Park, one of Arkansas' favorite Good Sam RV Parks, and come enjoy the friendly atmosphere and good people at the Ozark's BEST RV Destination!

At Denton Ferry RV Park we have 44 level RV and Camper sites, all with full service hook-ups (50/30 amp elec.; Water, Sewer). The entrance to the park is a wide, paved access. The Park is set in a pretty riverside meadow with 17 riverfront sites. From all sites you can relax and enjoy the beautiful scenery of the White River, just a few feet away. In addition to the riverfront sites, we feature 27 convenient pull-through sites. All sites measure 16' x 65' in addition to a 14' x 65' grass lawn space. Two natural spring fed ponds and a meadow make up our riverside walking park. We feature 12 sites with fire pit access, as well as a community fire pit available to all Park guests. Our office is located in the Reception Center which also includes a coin operated laundry, "The Cleanest RV Park Restrooms in America" - featuring modern facilities, private stalls and shower facilities. We also have a hospitality room that has Dish Network Satellite Color TV, games, dining areas, and a magazine and books library open to all guests.

Denton Ferry RV Park also offers a popular **Vacation Cabin** (<http://dentonrv.com/vacation/cabin/>) on the White River. The cabin is beautiful, with clean, updated furnishings, room to accommodate 8 people, two bedrooms and three bathrooms. But hurry, the cabin rentals book quickly!

We pride ourselves in offering each visitor a clean, friendly, and peaceful White River Campground experience. Join us and you'll agree.

Check out our reviews (<https://www.facebook.com/dentonferry?sk=reviews>) and what others are saying and then rate Denton Ferry RV Park!

Destination Mount on Home Deck -

Hwy 62

STOP 2

SUNDAY SEPTEMBER 29, 2019 DENTON FERRY RV PARK 740 DENTON FERRY ROAD COTTER,
ARKANSAS 72626 870-435-7275

TODAY WE MOVE NORTH TO STOP 2 AT COTTER, ARKANSAS, FOR A SPECIAL TREAT. IN ORDER TO MAKE OUR NEXT MOVE EASIER WE WILL OVERNIGHT AT DENTON FERRY RV PARK. THIS IS A FULL HOOKUP NICE SCENIC PARK ON THE BANKS OF THE RIVER. ALL SITES ARE PULL THROUGH, LEVEL AND WILL NOT REQUIRE UNHOOKING FOR THE STAY. THIS PROPERTY HAS BEEN IN THE SAME FAMILY FOR SOME 100 YEARS AND HAS INTERESTING ARCHAEOLOGICAL SIGNIFICANCE. THE "CP MULE COMPANY" WILL BRING THEIR ANTIQUE CHUCKWAGON AND PREPARE A DUTCH OVEN DINNER IN THE PIONEER FASHION, ALSO OFFERING COOKING LESSONS AND EXHIBITIONS. BEFORE DEPARTING MONDAY MORNING, WE WILL BE TREATED TO A COWBOY/PIONEER BREAKFAST WITH DUTCH OVEN BISCUITS, WHITE GRAVY, MOLASSES AND MUCH MORE.

AFTERNOON: SOCIAL TIME, ENJOYING THE RIVER AND SCENERY, COOKING LESSONS

4:00 GAM#4

EVENING:

5:30P.M. DUTCH OVEN DINNER AND LOCAL HISTORIAN TALK

MONDAY MORNING: 9/30

8:00 AM. COWBOY BREAKFAST

8:30 A.M. DRIVERS' MEETING

LEAVE BY 11 A.M. FOR STOP 3 AT WANDERLUST RV PARK AT EUREKA SPRINGS, AR

PARKERS (DAWSON, DUNHAM) DEPART 9:00 A.M.

CRESCENT HOTEL, EUREKA SPRINGS, AR





RESERVE YOUR SITE NOW

Voted as the #1 RV Park in Arkansas by Reader's Digest!
Voted in the Top 5 of the Best Arkansas RV Parks by www.tripsavvy.com
Voted in the top ten RV Parks by NWA Arkansas Travel Guide

Update June 6, 2019.

Hello everyone. I know that there has so many people affected by the storms, flooding, and all. Our hearts go out to you. We've been there.

For anyone wanting to get away from the mess or everyone that is unaffected by the weather. We want to let you know that one of our most common phone call the last few weeks has been. Are you open, flooded, are the roads open. We have had some rain here in NWA but for the most part we have been spared by the weather. We are open, and the roads, restaurants, and attractions are all open. The surrounding area is beautiful, trees are all green, lots of pasture has been cut for hay, and the views of the mountains are amazing. We have had beautiful weather here this spring. The rain we have had has been happening late afternoon or overnight for the most part. So if you want a nice quiet place to go, with lots of things to do. Bring it to Wanderlust RV park and Eureka Springs, Arkansas.

When you visit Wanderlust RV Park, you're staying in the best of company. We'll help you to your campsite when you arrive, and that's just the beginning of the friendly service you'll receive. We offer 88 full hookup sites, 51 pull-thru's, and 66 sites with 50 amps. You'll also find super clean restrooms, showers, and laundry facilities. *Very nice park but spaces are small and tight.* Be sure to visit our friendly RV park and cabins in Eureka Springs!

NOTE: Please review your confirmation email for instructions and directions to our RV Park. GPS will

STOP 3

MONDAY SEPTEMBER 30 WANDERLUST RV PARK 468 PASSION PLAY ROAD, EUREKA SPRINGS, AR 72632 479-253-7385

TRAVEL WEST FROM COTTER, AR ON HIGHWAY 62 (TURN RIGHT FROM DENTON FERRY ROAD ONTO US 62) FOR 78 MILES. PASSION PLAY ROAD WILL BE ON THE RIGHT ENTERING EUREKA SPRINGS WITH SIGNAGE DIRECTING TO THE PLAY. THE PARK IS A SHORT DISTANCE FROM 62 ON THE SIDE OF PASSION PLAY ROAD. THERE WILL BE A FLAGGER ON 62 AT THE INTERSECTION FROM ~~12 UNTIL 1 P.M.~~ **DO NOT ARRIVE EARLY.**

4:00 GAM#5

1-2:00

MONDAY EVENING:

6:30 P.M. DEPART FOR 7PM DINNER AT THE CRESCENT HOTEL (75 PROSPECT AVE), AN AGING BUT BEAUTIFUL HISTORIC HOTEL OF FADED ELEGANCE. SMART CASUAL ATTIRE SUGGESTED.

TUESDAY MORNING: 10/1

9:30 A.M DEPART CAMPGROUND. CARPOOL TO EUREKA SPRINGS TROLLEY STATION (137 WEST VAN BUREN ST, HWY 62) TO MEET FOR CITY TOUR AT 10:00 AM.

TUESDAY AFTERNOON/EVENING:

3:30 P.M DEPART CAMPGROUND, FOR DINNER AT PASSION PLAY GROUNDS (935 PASSION PLAY RD), FOLLOWED BY 7:30 PERFORMANCE OF INTERNATIONALLY FAMOUS PLAY. **BE ALERT TO POSSIBLE TIME CHANGE**

WEDNESDAY MORNING: 10/2

10 A.M. DEPART CAMPGROUND FOR TOUR OF THORNCROWN CHAPEL AND PEA RIDGE NATIONAL BATTLEFIELD NP. THIS BATTLE WAS ONE OF THE TURNING POINTS IN THE CIVIL WAR, AND WE WILL BE LED BY A RANGER GUIDE FOR A PERSONALIZED VIEW OF THE CONFLICT AND GROUNDS. THE CHAPEL TO BE SEEN ON OUR RETURN ROUTE IS LISTED NATIONALLY AS A UNIQUE ARCHITECTURAL MARVEL.

11AM MEET AT THE VISITORS CENTER AT THE NATIONAL PARK TO ASSEMBLE.

11:20 A 20 MINUTE FILM WILL BE SHOWN IN THE AUDITORIUM.

12:20 OUR TOUR GUIDE WILL MEET WITH US AND CONDUCT A NARRATIVE PERSONAL TOUR OF THE BATTLEFIELD WHICH WILL LAST ABOUT 90 MINUTES. AFTER THE TOUR WE WILL RETURN TO THE CAMPGROUND, VISITING THORNCROWN CHAPEL ON THE RETURN ROUTE. THERE ARE NO FOOD FACILITIES DURING THESE EVENTS, SO YOU ARE ADVISED TO TAKE SNACKS OR A LITE LUNCH WHICH YOU WILL HAVE TIME TO EAT BETWEEN THE FILM AND THE BATTLEFIELD TOUR.

* OPTIONAL EXCURSION TO QUIGLEY CASTLE AND SCENIC ROUTE AROUND BEAVER LAKE. INFORMATION PROVIDED AT DRIVERS' MEETING.

WEDNESDAY EVENING AND THURSDAY:

FREE TIME TO VISIT SITES OF INTEREST WHICH WILL BE DESCRIBED FOR YOU AND INFORMATION GIVEN BY HANDOUTS. OF SPECIAL SIGNIFICANCE IS THE VARIETY AND QUALITY OF RESTAURANTS AND SHOPS IN THE CITY. RIPLEY (OF BELIEVE IT OR NOT) LISTS EUREKA SPRINGS AS ONE OF THE TEN MOST INTERESTING CITIES IN AMERICA.

FRIDAY OCTOBER 4 WE WILL MOVE TO ROGERS AREA (BELLA VISTA) ARKANSAS.

8 A.M. DRIVERS' MEETING

LEAVE CAMPGROUND BY 11 A.M.

PARKERS (FLETCHER, HEIST) DEPART AFTER DRIVERS' MEETING

LEAVE EUREKA SPRINGS TRAVELING WEST ON US 62 APPROXIMATELY 32 MILES TO US 71. THEN, NORTH FOR ~~39~~ ^{37.6} MILES TO THE INTERSECTION OF MERCY WAY. GO ¼ MILE EAST ON MERCY WAY TO BLOWING SPRINGS ROAD, THEN ¼ MILE EAST TO CAMPGROUND.

Arrive b/y 1:30 - 2:30

Lopus
Bentonville
Rest Area

Stop light
49 ends before 71

Right turn
mercy medical center

49 W
becomes
Cooper
Elementary
Way
Campground
post guard check

Lopus
Same right

Sam at 4:00

CBD-oil-

STOP 4

OCTOBER 4 BLOWING SPRINGS RV PARK, 700 BLOWING SPRING ROAD, BELLA VISTA, AR 72715

479-381-5488 (JOAN)

FRIDAY EVENING:

4:00 PM GAM#6 AT CAMPGROUND. AFTERWARD ASSEMBLE ON YOUR OWN LATE AFTERNOON AT BENTONVILLE TOWN SQUARE FOR "FUN ON THE BENTONVILLE SQUARE" WITH MUSIC, FOOD VENDORS, DANCING, ETC. *5:30 caravm*

SATURDAY ACTIVITIES: 10/5

10:00 MEET CHAMBER REPRESENTATIVE AT WALTON FIVE AND DIME/MUSEUM, TOWN SQUARE, FOR A WELCOME AND GROUP PHOTO.

202 SW O Street. Logus → 2900 S. 26th Rogers
FARMERS' MARKET, NATIVE AMERICAN MUSEUM, DAISY TOY MUSEUM, RUSSELL KNIVES, HOME TOURS AND ALTERNATIVE ATTRACTIONS.

4:15 P.M. CARPOOL FROM CAMPGROUND TO DINNER AND SHOW, "SIMPLE PLEASURES", A CELEBRATION OF THE FIFTIES. *13718 Rathbury Dr. Bella Vista*

SUNDAY: 10/6 A BIG DAY!!

9:30 A.M. DEPART CAMP FOR CRYSTAL BRIDGES MUSEUM OF AMERICAN ART AND FRANK LLOYD WRIGHT DESIGNED RESIDENCE.

10 A.M. AND AFTER: FORMAL CHEF PREPARED BRUNCH AT MUSEUM GROUNDS. OUR GROUP WILL BE SEQUENCED IN SMALL GROUPS ON A SCHEDULE TO ENABLE THE CHEF TO PERSONALLY OVERSEE PREPARATIONS. THE ART MUSEUM CAN BE TOURED AS MUCH AS ONE WISHES WHILE OTHERS BRUNCH. THERE IS MUCH TO SEE AS THIS IS ONE OF THE FINEST MUSEUMS OF AMERICAN ART IN THE WORLD UNDERWRITTEN BY THE WALTON FAMILY.

THE FRANK LLOYD WRIGHT DESIGNED RESIDENCE IS ON THE MUSEUM GROUNDS. TICKETS ARE REQUIRED AND OURS ARE RESERVED.

EVENING:

6:00P.M. GROUP/DRIVERS' MEETING IN CAMPGROUND. BRING HEAVY HORS D'OEUVRES AND DRINKS OF CHOICE

PREPARATION TO TRAVEL MONDAY WHICH WILL BE OUR MOST RIGOROUS TRAVEL DAY. LEAVE CAMPGROUND BY 10 A.M. MONDAY.

PARKERS (GERARD, LANASA) DEPART 8:00 MONDAY

STOP 5

BRANSON, MO AMERICA'S BEST CAMPGROUND, 499 BUENA VISTA ROAD, BRANSON, MO 65616

417-336-4399 (GPS: LAT:36.684446, LONG: -93.2596219)

SUGGESTED ROUTE: US71 / I-49 SOUTH, ^{1.6 miles} US 62 EAST, US 65 NORTH (110 MILES +/-)

- FROM BRANSON US 65, TAKE EXIT ONTO SHEPHERD OF THE HILLS HIGHWAY (MO 248).
- *Out of business* → PASS K-MART AND REMAIN IN RIGHT-TURN LANE. *McDonalds*
- VEER RIGHT AT THE "Y" TO STAY ON MO 248.
- GO STRAIGHT AHEAD 1.5 MILES.
- FOLLOW SIGNS TO LEFT TURN ON BUENA VISTA ROAD. *Arrive 2:30pm*

MONDAY: 10/7

5 P.M. DRIVERS' MEETING FOLLOWED BY CATERED BBQ ARRIVAL DINNER ON GROUNDS

TUESDAY: 10/8

lunch
10:30 A.M. BOARD TOUR BUS AT CAMP FOR TOUR OF COLLEGE OF THE OZARKS, FOSTER MUSEUM, AND LUNCHEON AT KEETER CENTER (CULINARY SCHOOL). AREA TOUR DEPENDING ON TIMING. RETURN TO CAMPGROUND MID-AFTERNOON. TO REFRESH. EAT ON YOUR OWN.

Back at campground mid afternoon
7 P.M. BUS TAKES TOUR GROUP FROM CAMPGROUND TO PRESLEY MUSIC SHOW FOR AN EVENING PERFORMANCE.

WEDNESDAY: 10/9

9 A.M. LEAVE CAMPGROUND AND CARAVAN TO BASS-PRO SHOPS AND AQUARIUM IN SPRINGFIELD. THE AQUARIUM AND WILDLIFE MUSEUM IS RECOGNIZED AS AMERICA'S FINEST NEW ATTRACTION AND IS TRULY SPECTACULAR. A PRIVATE OZARKS' NOON LUNCHEON WILL BE PREPARED FOR US BY THE HEMINGWAY RESTAURANT'S CHEF. OUR TICKETS TO THE MUSEUMS ARE GOOD FOR ALL DAY. THE SHOPS HAVE EVERY IMAGINABLE PIECE OF OUTDOOR GEAR. THE NRA FIREARMS MUSEUM IS ALSO HUGE AND INCLUDED IN OUR VISIT. BALANCE OF DAY FREE. SUGGESTION: RELICS UPSCALE ANTIQUE MARKET → IS NEAR BY.

THURSDAY: 10/10

FREE DAY

lunch Uncle Buck's auditorium
Titanic Museum Exhibit

5.9

*71 to Joplin - 44 E to -
Springfield to 65
Branson
Joplin.*

FRIDAY: 10/11

Day Pass!
10 A.M. DEPART FOR SILVER DOLLAR CITY FALL FESTIVAL OF CRAFTS, FOOD AND MUSIC. RECOGNIZED AS A TOP WORLD VENUE THIS WONDERFUL THEME PARK CELEBRATES THE OZARKS AND OUR CULTURE. THE FULL DAY IS AVAILABLE AND MANY MAY CHOOSE TO SPEND IT THERE. THERE ARE GOOD FACILITIES FOR RESTING AND NUMEROUS SHOWS AND THEATRES OFFER SEATING. VISITORS WITH LIMITED MOBILITY ARE ACCOMMODATED. SOME MAY WISH TO SPEND MORE TIME AT SILVER DOLLAR CITY AS THERE ARE MANY EVENTS, RIDES AND SHOWS.

SATURDAY: 10/12

9:00A.M. CARAVAN FROM CAMPGROUND TO SHOJI TABUCHI THEATRE FOR 10 AM SHOW

10:00 A.M. SHOJI TABUCHI THEATRE (3260 SHEPHERD OF THE HILLS EXPRESSWAY, BRANSON 65616) -

2:00 P.M. GROUP KITTY FEE LUNCH AT CANTINA LAREDO (1001 BRANSON LANDING BLV'D, BRANSON, 65616)

SUNDAY OCTOBER 13: MOVE TO MTN. GROVE MISSOURI RV PARK 2325 MISSOURI PARK DR. 65711 417-926-4104

8:00 DRIVERS' MEETING

LEAVE CAMPGROUND BY **11:00**

PARKERS (McCRARY, WILSON) DEPART **8:30 AM**

THE FAMOUS "HOME OF THROWN ROLLS" (LAMBERTS' RESTAURANT) IS AT OZARK, MO, ON HIGHWAY 65, 42 OR SO MILES NORTH OF BRANSON AND WELL MARKED. IT WILL BE CROWDED ON SUNDAY AND YOU SHOULD BE THERE BY **11:00** AM. RV PARKING IS ADEQUATE. IN ADDITION TO A FUN STOP, THE FOOD IS EXCELLENT AND PURE OZARKIAN. GET HUNGRY AGAIN FOR A GREAT ARRIVAL DINNER AT MTN. GROVE.

*Section 6 - Shopping in Branson
Land Village
Suggested things to do.*

STOP 6

SUNDAY OCTOBER 13 MISSOURI RV PARK, 2325 MISSOURI PARK DRIVE, MTN.GROVE, MO 65711

TRAVEL NORTH ON US 65 FROM BRANSON 44 MILES TO THE INTERSECTION OF US 60 EAST. THEN TRAVEL 68 MILES EAST ON US 60 TO A POINT 3 MILES WEST OF MTN.GROVE, MO. THE CAMPGROUND IS WELL MARKED AND DIRECTLY ON THE NORTH SIDE OF US 60. A FLAGGER WILL BE AT THE ENTRY FROM 1 UNTIL 2 P.M. **DO NOT ARRIVE EARLY.**

CAUTION: EXIT FROM RT 65 TO 60 EAST IS EASY TO MISS. TAKE "CABOOL" EXIT (GPS DIRECTIONS ARE ACCURATE).

2nd exit *60E*
Mt. Grove MO - park on left - head back west - park on r -
Seymour 25E - Casey's gas station - fuel
cross over

6:30 P.M. ARRIVAL DINNER...CURIOUS STUFF: FROG LEGS, CATFISH FRIES AND FIXIN'S, ETC.

7 P.M. SPECIAL ENTERTAINMENT: BONA FIDE FAMILY STRING BAND - 2 couples -

MONDAY: 10/14

meet at 10:00
9:30 A.M. CARPOOL TO WILDER MUSEUM (3060 STATE HIGHWAY A, MANSFIELD, MO 65704)

11 A.M. LEAVE WILDER MUSEUM FOR BAKERSVILLE RARE SEED CENTER (2278 BAKER CREEK RD)

12:00 P.M. VEGAN LUNCH AT BAKERSVILLE

4:00 P.M. DRIVERS' MEETING AT CAMPGROUND

5 P.M. SPECIAL DINNER BRING YOUR GRILLE. COOK YOUR OWN STEAK (SPECIAL LOIN EYE STEAKS WILL BE FURNISHED ALONG WITH SIDES). BRING YOUR UTENSILS AND DRINKS. AFTER DINNER SOCIAL GATHERING: GROUP SONGS AND GAMES.

TUESDAY: 10/15 DEPART FOR WILLOW SPRINGS/MTN.VIEW

LEAVE CAMPGROUND BY **11:00**

PARKERS (COE, VANNEMAN) DEPART 8:30

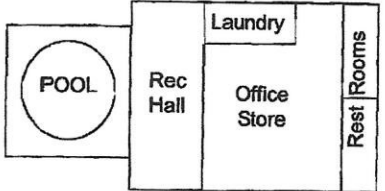
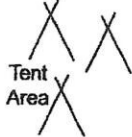
If you pass campground - to Mt Grove Walmart -

To Mountain Grove, Poplar Bluff
 EAST HWY 60
 HWY 60
 To Springfield
 WEST HWY 60

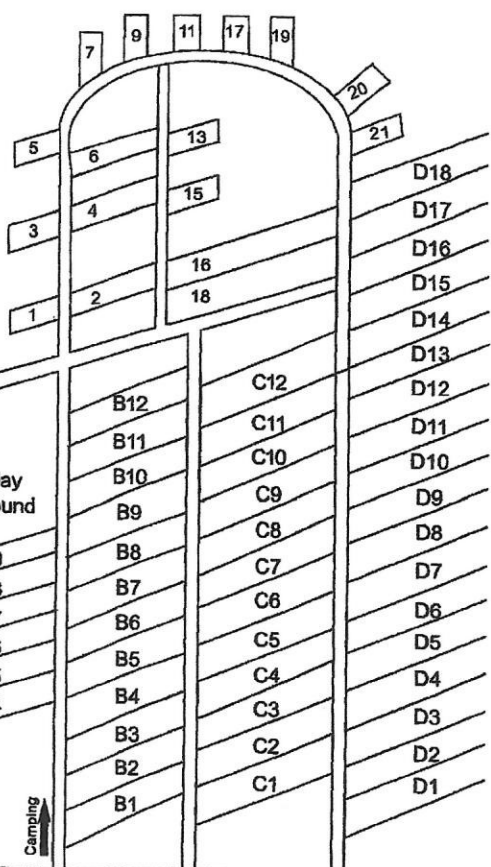
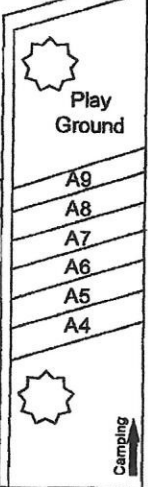
**Family Built
& Operated**

T.V. CHANNELS RECEIVED ON ANTENNA	
Channel	Station
3	NBC
10	CBS
33	ABC
21	PBS
15	UPN
27	FOX

**CAMPGROUND
OPEN ALL YEAR**



Trash



MISSOURI PARK DRIVE

North

Outer Road

West Plains
STOP 7

**TUESDAY OCTOBER 15: OZARK MOUNTAIN SPRINGS RV PARK, 5475 US-60, MOUNTAIN VIEW, MO
65548**

LEAVE MTN. GROVE BY 11:00A.M. DRIVE EAST ON HIGHWAY 60 APPROXIMATELY 28 MILES. OZARK MOUNTAIN SPRINGS RV PARK IS WELL MARKED AND, ON THE NORTH, (LEFT) SIDE OF HIGHWAY 60 A FEW MILES EAST OF WILLOW SPRINGS. THE HIGHWAY IS DIVIDED AND THE CROSSOVER IS JUST PAST THE CAMPGROUND. A FLAGGER WILL BE AT THE CROSSOVER THERE FROM 12 NOON UNTIL 1 P.M. YOU MAY ARRIVE ANYTIME AFTER 10:00 A.M. IF YOU WISH → *don't leave 6/4 10:00*

TUESDAY EVENING. 10/15

6 P.M. CHEF JACOB GARRETT AND BOOMER BURTRUM WILL PREPARE PRIZE WINNING SMOKED RIBS AND CHICKEN.

7 P.M. "OZARK ADVENTURERS, THE SPIRIT LIVES" IS PRESENTED BY HEIRS TO THE PIONEER HEART.

WEDNESDAY: 10/16

9 A.M. BOARD CHARTER TOUR BUS AT CAMPGROUND TO BEGIN "ANIMAL DAY"

10:00 A.M. VISIT THE FAMOUS "11 POINT RANCH" AT THOMASVILLE, MISSOURI TO SEE A CUTTING HORSE TRAINING AND EXHIBITION AND LEARN THE STORY OF THE 13,000 ACRE RANCH ON THE RIVER.

12 NOON: "LUNCH ON THE GROUNDS" CHEF MOZELLA "MO" JETT WILL GREET US AT THE ROVER COUNTRY STORE AND GUN CLUB FOR A LUNCH BREAK.

2 P.M. INTERNATIONALLY FAMOUS BORDER COLLIE TRAINER AND TEACHER MARC CHRISTOPHER WILL DEMONSTRATE THE TRAINING AND USE OF HERDING SHEEPDOGS, MANAGING PROBLEMS WITH DOGS, AND HORSE WHISPERING...." READING AN ANIMAL'S MIND."

THIS WILL BE AT HIS FARM NEAR MOODY, MO. PLEASE BRING YOUR FOLDING CHAIRS IF YOU NEED SEATING. THE CHAIRS CAN BE STOWED IN THE HOLD OF THE TOUR BUS. THERE WILL BE A SMALL SET OF BLEACHERS ON THE GROUNDS.

5 P.M. OR THEREABOUTS, BACK AT CAMP, "THE PREACHER AND HIS JUMPING MULE" IS AN EXHIBITION OF HOW HUNTERS AND OTHERS IN THE HILLS TRAVEL ACROSS OBSTACLES. THIS IS ALSO AN EXAMPLE OF TEACHING ANIMALS WITHOUT PHYSICAL FORCE.

DINNER ON YOUR OWN

*Willow Springs - Quilt
Square - store*

*etc. stores
Est - Stacey's*

THURSDAY 10/17

9 A.M. GATHERING AT CAMPGROUND FOR PRESENTATION OF "FROM CORN TO GRAPES" THE STORY AND EVOLUTION OF WHISKEY AND WINE IN THE HILLS. SGT. DAVID HORST, MSHP, RET.

10 A.M. HORST WINERY TOUR. (CARPOOL) ACROSS ROAD FROM CAMP. WINE TASTING, WITH NON-ALCOHOLIC GRAPE BEVERAGES ALSO FEATURED.

LUNCH ON YOUR OWN

2:30 P.M. MEET AT A LOCATION IN WEST PLAINS TO BE ANNOUNCED. RETIRED HISTORY PROFESSOR AND CURRENT GOVERNOR OF MISSOURI STATE UNIVERSITY, CAROL SILVEY, WILL TELL OF EARLY SETTLERS/NATIVE AMERICANS IN THE OZARKS. CAROL'S XX-GRANDFATHER WAS A CHEROKEE ON THE "TRAIL OF TEARS" WHO DROPPED OFF THE TREK NEAR HERE DUE TO ILLNESS, LIVED IN A CAVE, SURVIVED, RECOVERED, AND FOUNDED THE LOCAL FAMILY.

FOLLOWING CAROL'S LECTURE, WE HOPE FOR A TOUR OF A FANTASTIC COLLECTION OF NATIVE AMERICAN POTTERY AND RELICS, HISTORIC MERCANTILE AND ANTIQUE CENTER.

7:00 P.M. VERY, VERY SPECIAL ENTERTAINMENT. THE FOLK MUSIC CONSULTANT AND PERFORMER FROM THE MOVIE, "WINTER'S BONE" WITH HER BAND WILL PERFORM. MERIDETH SISCO WAS RAISED IN THE AREA AND TELLS OF "THESE OZARK HILLS" ON A REGULAR PROGRAM ON NPR. A STORYTELLER EXTRAORDINAIRE AND FOLK SINGER DELUXE, MERIDETH IS ALSO AN AUTHOR, REPORTER AND MEMORY BANK OF OZARKS FOLKS, HISTORIES AND EVENTS. **DO NOT MISS THIS EVENING!!**

FRIDAY 10/18

FREE DAY. EXCURSIONS AND ATTRACTION OPPORTUNITIES WILL BE REVIEWED AND OFFERED. THERE ARE FOUR PUBLIC GOLF COURSES NEARBY, GOOD FISHING, ANTIQUES SHOPPING, ETHNIC RESTAURANTS, LAUNDROMATS, RV SERVICES, AND MUCH MORE. ENQUIRE IF YOU HAVE A SPECIAL INTEREST.

EVENING:

REGULAR AUDITORIUM STAGE ENTERTAINMENT IN THE CAMPGROUND WITH MUSIC AND DANCING.

SATURDAY 10/19

10 A.M. CARPOOL TO HISTORIC FIRST PRESBYTERIAN CHURCH, AID AVENUE JUST SOUTH OF THE SQUARE, IN WEST PLAINS FOR QUILTING EXHIBIT AND DEMONSTRATION.

12:00 NOON: AMISH LADIES PREPARED TRADITIONAL FARM LUNCH AT CHURCH

1:00 P.M. VOCAL CHOIR AND PIPE ORGAN PERFORMANCE (AT CHURCH)

7:00 P.M. REGULAR SATURDAY NIGHT SHOW AT CAMPGROUND

SUNDAY 10/20

10:00 A.M. "CIVIL WAR IN THE OZARKS, BROTHER VS BROTHER." REV.FR. BOB WILLIAMS

11:00 AM CAMPGROUND HALL. NON-DENOMINATIONAL INSPIRATIONAL COMMENTS BY SPECIAL GUEST. ATTENDANCE ENTIRELY VOLUNTARY AND PROCEEDINGS UNOFFICIAL.THOSE WHO WISH TO ATTEND CHURCH OF THEIR CHOICE OR NO CHURCH HAVE FULL MENU IN THE AREA.

LUNCH ON YOUR OWN

2:00 P.M. SQUARE, JIG AND COUNTRY DANCING LESSONS. SOCIAL TIME, GAMES AND TRAVEL PREPARATIONS.

5:00 P.M. SUPER HAMBURGERS AND CHIPS BY STACEY. BRING YOUR OWN DRINK. SPECIAL DESERT

6:00 PM: FOLLOWING BURGERS; CAMPFIRE AND DRIVERS' MEETING

MONDAY: 10/21 MOVE TO VAN BUREN

LEAVE CAMPGROUND BY 11 A.M.

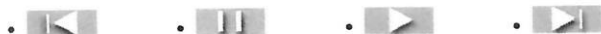
PARKERS (WISWELL/FOSTER, SMITH) DEPART 8 A.M.

- [Skip to navigation](#)
- [Skip to content](#)



Navigation

- [Home](#)
- [Accommodations](#)
- [Floating Options](#)
- [Why Choose Us](#)
- [Maps & Directions](#)



Current River Float Trips & Camping

We provide RV & tent camping, tube trips and cabin rental. Big Spring RV Camp is located on the banks of the spring fed, crystal clear Current River less than 1/2 mile down stream from the bridge at Van Buren, Missouri.

Our facilities are located in the heart of Missouri's Scenic Ozarks. With the recent improvements to surrounding highways, we are only a short driving distance from St. Louis, Springfield, and Sikeston.

Current River, Missouri's premier float stream, is a great place for outdoor activities in the Spring, Summer, and Fall. When it's hot, Current River tubing (float trips) is a favorite recreational activity (please see [Floating Options](#)). Other activities include swimming, fishing, hiking, sightseeing, mountain biking, jeep riding, etc.

At Big Spring RV Camp, we have short trails along the River. There are a number of other trails nearby, within the National Park and the Mark Twain National Forest.

Big Spring RV Camp is less than 4 miles upstream from where Big Spring, the largest single outlet spring in the world, gushes forth from the base of a limestone bluff and flows into Current River.

We are a family owned business established in the late 1970's. We value each customer. Stop by and visit us, you will be glad you did.

Our facilities are not subject to flash-flooding and provide excellent waterfront access for both RV and tent campers. In over 100 years Big Spring RV Camp has never experienced flooding. Come spend some time with us on the beautiful, spring-fed Current River. We promise, you'll soon understand why our guests keep coming back!

Big Spring RV Camp is authorized within Ozark National Scenic Riverways to provide tube rentals and shuttle service.

Next page: [Current River Camping, Lodging & Cabin Rental](#)

STOP 8

MONDAY OCTOBER 21 BIG SPRINGS RV PARK, 501 CHICOPEE RD, VAN BUREN, MO 63965

5 3 on 103

TRAVEL EAST ON HIGHWAY 60 APPROXIMATELY 57 MILES TO VAN BUREN, MO. JUST PRIOR TO CROSSING THE RIVER BRIDGE, EXIT TO THE RIGHT (SOUTH) AND FLAGGERS WILL DIRECT YOU TO THE CAMPGROUND. BEWARE THAT OUR PARK IS **NOT** THE NATIONAL PARK OF SIMILAR NAME. SO, DO NOT FOLLOW THE WRONG SIGNS. SHORTLY AFTER LEAVING THE MAIN HIGHWAY, ANOTHER LEFT IS ONTO THE SIDE ROAD. BETWEEN 12 NOON AND 1:00 PM FLAGGERS WILL BE ON STATION.

MONDAY EVENING

5 P.M. OLD FASHION RIVERBANK CATFISH FRY DINNER AT CAMPGROUND. GAME TIME TO FOLLOW.

TUESDAY 10/22

9:30 A.M. BOARD TOUR BUS FOR CONSERVATION DAY PROFESSIONAL GUIDE WILL LEAD THE TOUR AND DISCUSSION OF MISSOURI'S UNIQUE FUNDING OF CONSERVATION, ELK RESTORATION PROJECTS, SPRINGS, PARKS, RECREATIONAL PROJECTS, AND CONSERVATION EDUCATION CENTER. HISTORIC GAME HARVESTING PRACTICES WILL BE EXPLAINED.

LUNCH TO BE SERVED AT THE ECHO BLUFF LODGE, MISSOURI DNR'S SHOWPIECE RESORT AND RV PARK.

WEDNESDAY 10/23

LAZY DAY WITH SOCIAL TIME ON THE GROUNDS OF CAMP.

ARRANGEMENTS ARE MADE FOR KAYAKING, RAFTING, TUBING, CANOEING AND WATER SPORTS.

ONE OF THE PRINCIPAL HERON ROOKERIES IS NEARBY. RIVER FLOATS BY JOHN (JON) BOATS ARE OFFERED, AND REVISITS TO DISCOVERED AREAS SUGGESTED. FISHING IS GOOD AND NEARBY, BUT CAN BE AFFECTED BY WATER LEVELS.

6:00 P.M. **FINAL BANQUET** AND CELEBRATION AT THE BLUE HERON RESTAURANT (ADJACENT TO CAMP)

THURSDAY MORNING 10/24

BREAK CAMP. TRAVEL SAFE. WE'LL SEE YOU DOWN THE ROAD.

BENTONVILLE SQUARE RESTAURANTS

Flying Fish Seafood	<i>We ate here, great food</i>
The Preacher's Son	Closed Sunday
Pressroom	Closes at 3:00 p.m. on Sunday
Tavola Trattoria	
Table Mesa Bistro	Closes at 3:00 p.m. on Sunday
Tusk & Trotter	
Oven & Tap	Closes at 2:00 p.m. on Sunday
The Hive	
Spark Café	
Fiamma' Ristorante	Closes at 2:30 p.m. on Sunday
The Peddlers Pub	
The First Seat	Closed on Sunday
Ozark Mountain Bagel	
Bike Rack Brewing	
The Back Porch	Closed on Sunday

Activities at Bentonville

On Friday nights the "Friday on the Square" If you want to eat at the Preacher's Son this is your chance. There are Food Vendors on the square.

On Saturday morning is the Farmer's Market on the square. Nancy Kalish from the Chamber office will meet us at Walton Five and Dime museum at 10:00

Other things to see on your own:

Peel Mansion is a Victorian house with period furniture. Calling it a mansion is a bit of a stretch, but it is a large house built in 1875 and the grounds are nice. There is no admission charge.

The Museum of Native American History is excellent and I encourage you to visit. Beautiful collection and not so large you are confused. The gift shop is worth the trip. There is a self-guided audio wand tour available. This tour has no admission charge.

Veterans Wall of Honor Address 103 Veterans Way off US Highway 71.
www.veteransmonumentbellavistaar.com The Wall features concentric curved wall panels with about 4,200 veteran's names on it. The monument is reinged by 18 historical flags and 120 feet of cast bronze historical plaques.

This is the time to visit the 8th Street Market. There are 5 restaurants, cheese shop, chocolate factory, gift shop and more. Also, see the Brightwater Culinary Institute located there.

In Rogers visit Russell Knife store and or the Daisy B.B, Gun museum.

Caravan activities at Mt. View, Arkansas

Locoropes has a zip line plus other activities to make your adrenaline flow.

Address: Ozark Folk Center Park, Park Avenue, Mountain View, AR

Phone: 888-669-6717.

Drive In Movie: Stone Drive In. 808 Theatre Ln., Mountain View

www.stonedrivein.net (870)-269-3227

For local color, eat at The Rainbow Café on Main Street

Arkansas Craft Gallery. Address: 104 East Main Street

Horseback Riding, Fishing and Water Sports see Andy or Shawn at the Campground Office

Shopping in Eureka Springs

There are many shops on Spring street and Main street. I am only mentioning some of the more unique. But as you walk these streets , you will find many others that will catch your interest. The first ones will all be on Spring Street. I am starting at near the top of the street.

At the top across from Rogues Manor eating establishment at Tram stop 84 is the Sweet Spot Art Gallery. On down on the opposite side is a shop called (I think) McMillians Folly. There are three buildings and it may not be open. He has Parkinson's and is having some mental issues. A woman is helping him and she said he can't decide if he wants to sell his items or not. There is very old chipped pottery, many old prints, and maps, oriental rugs, and serious collector pieces. Things are not displayed well and may look like junk. You may not want to mess with this place, but if you are looking for an experience drop in here. When I say old stuff I mean 1700's and earlier.

1. Zarbs: unusual art pieces made with reclaimed pieces. Most of these are non-realistic characters on motorcycles. There are contemporary art pieces, jewelry in brass and silver, Frogman Bronze pieces and pottery. There is a variety of prices.
2. Quick Silver: this shop has a variety of prices and art pieces. Their jewelry is nice and reasonably priced for handmade. They also have cards, pottery and sculptures. There is a vintage airstream sculpture for \$300.
3. McGee jewelry is across the street from Quick Silver and on a corner. This shop has been in Eureka Springs for 48 years. What makes it unique is the jewelry is hand made by a father and daughter and is in either white or yellow gold. They are known for their scroll and filigree work on the bands and settings. Many of their pieces look old. They work with diamonds and gem stones. There is silver jewelry that they did not make and, of course, is much less expensive. It is worth a visit just to see the handmade jewelry. They have beautiful gold and silver lavaliers.
4. Back across the other side of Spring Street again is the hat shop called Hides and Heirlooms. 83 Spring Street There are men and women's hats. These are real hats and not just a tourist rendition.

5. Silly Chili is also on this side of the street and sells all kinds of spicy seasonings, dips, pickles etc.
6. The Roxy 95 Spring Street has beautiful stained glass. Much of it is old. I bought a piece to hang in a bathroom window.
7. Fine Art Gallery and Studio called Mel Shipley Signature Gallery on at 85 Spring Street is a nice place to see an artist working. It may not be him but some artist will be working. Many beautiful bronze sculptures and paintings, both abstract and realistic.
8. If you are looking for yarn, Fleece and Flax yarns on Spring Street is for you.
9. Looking for clothes or fun shoes? Ciest La Vie on 58 Spring street carries Fly brand shoes and other trendy shoes.
10. The Jewel Box at 40 Spring Street carries the work of local artists and the prices are less expensive than some of the other shops.
11. On down Spring Street is the Isis gift shop at the Basin Street Hotel and she has a variety of handmade items: jewelry, pottery, and many other things.
12. The Secret Garden on 26 Spring Street has accessories for the garden. There is also a shop on Main that has garden accessories.

Moving to Main Street there is

1. Eureka and Company that has cute children's clothes, men's shirts, pretty silver jewelry and women's clothing. Something for everyone. The address 1 Center Street. (This is also called Main Street) They ship free.
2. On down this street you will find the garden accessory shop that also has children's clothing.
3. On down the street is a kitchen shop that sells food items. (Gourmet Eureka 7 Center Street. The kitchen shop that sells more gadgets (although this shop has a few) is on Main down by the Court House. It is called Timmy Ticklers Culinary and Kitchen Supplies on 51 South Main.

EATING DOWNTOWN

Nibbles on Spring Street was highly recommended. It has quiche of the day and other such offerings.

The Oasis is down one flight of stairs between buildings. It has Mexican/Arkansas, but several people recommended it.

I ate on the outside balcony of the Basin Hotel as Nibbles and Oasis were closed. I had the Monte Christo sandwich and it was good. The best part was sitting on the balcony and watching people below.

For evening downtown DeVito's Italian restaurant has been there for years and is very popular. It is on Main Street. They are only open in the evening.

Shopping in Bentonville

Really only went to one outstanding shop and that was The Spice and Tea Exchange. Address 109 SE A street, Bentonville (This street runs off the square) Exceptional spice selection in bulk and packages as well as tea and gift items

The Eighth street markets are said to be good, but I did not visit them.

The Preacher's Son is an outstanding place to eat but you will need reservations. Friday night on the square is your only chance as it is closed on Sunday. It is located in a church just off of the square.

Shopping in Mountain View, Arkansas

Most of the shops are typical tourist fare, but the iron works store is very nice. Furniture and accessories had made in iron.

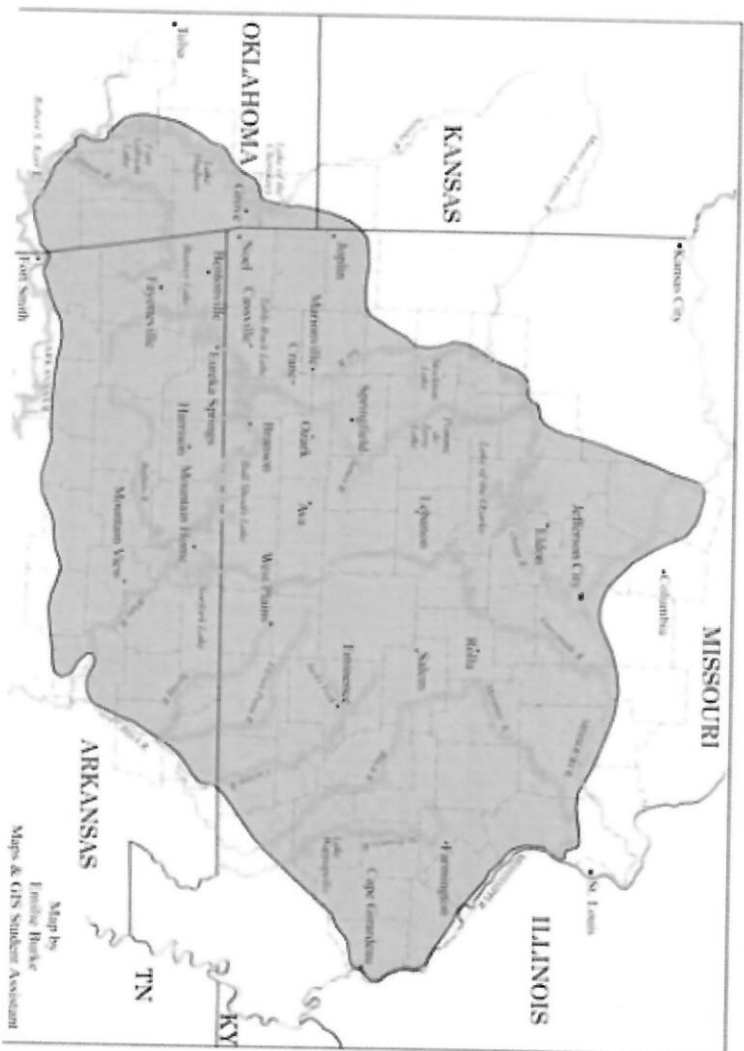
Shopping in Branson

Downtown (just keep following 76 over the overpass and keep going and it will become Main. Go as far as you can go and you reach the Landing. We will have lunch there at the Mexican restaurant. On this walking plaza there is a Chico's, JJill a kitchen shop and lots of others.

Dick's Five and Dime is unique and worth a visit. The store is filled in items reminiscent of the Five and Dime Stores of the 50's. Address is 103 W. Main

If you wear a narrow shoe, If the shoe fits is for you. Address 104 S. Commercial Street

The Ozarks



You are invited to visit
THORNCROWN CHAPEL



OPEN DAILY

Hours vary according to season

Sunday Services

9:00 a.m. and 11:00 a.m.

(479) 253-7401

www.thorncrown.com

One mile west of Eureka Springs on Highway 62 West

HUNTER'S
FAMILY RESTAURANT^{LLC}

OWNER: HUNTER BRANSCUM

6480 HWY. 14, FIFTY SIX,  ARKANSAS 870-757-2500

Delicious food! Affordable prices! Friendly, efficient service!