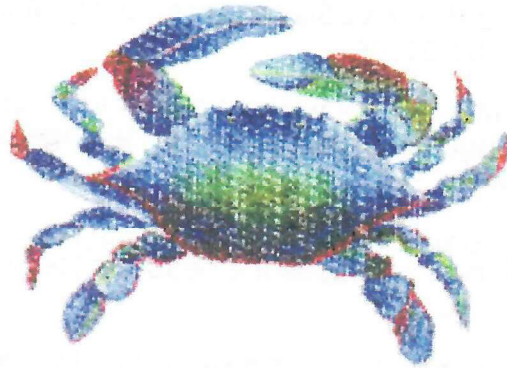


*Smuck My Lake
Virginia
great fun*

CARAVAN MANUAL



SOUTHEAST COAST SPECTACULAR

WBCCI Caravan N-34-H

October 4 - November 11, 2005

*Bill + Judy Wilson
Jamie's cell phone
252-670-8440*

**WBCCI Caravans
Fun, Fellowship, Adventure**

**Southeast Coast Spectacular Caravan 2005
WBCCI Caravan N-34-H**

Welcome to the WBCCI Southeast Coast Spectacular Caravan. This caravan will travel from Lewes, Delaware to Jekyll Island, Georgia, with several stops along the way.

This Caravan has been planned to the best of our ability - but, in spite of all the contacts, telephone calls, and letters things can go awry. If that happens, try to take it in stride - the next day will be better.

Because many of the facilities we will visit are operated by the National Park Service and similar governmental agencies, using your Golden Age or Golden Eagle Passport will save you dollars.

In your caravan manual you will find a schedule for caravan duties and jobs. If you have a medical problem which precludes the performance of certain jobs, please inform your Caravan Leaders.

Please read carefully the pages of Caravan Rules and Procedures . We try to have as few rules as possible, but there are some important agreements that must be made if we are to travel safely together.

Also included with this manual is a Caravan Directory, listing the names and home addresses of all of the caravanners on this caravan. This should be considered privileged information and should not be shared outside the caravan itself.

In general, our first priority as Caravan Leaders is to see that the Caravan functions safely and properly; and our second is to help you enjoy your caravan experience. We need your cooperation, and so does every other caravanner.

If you have any questions, ask us. If you have any problems, tell us.

Jamie & Susan King
WBCCI#7018

**PLEASE WEAR YOUR WBCCI BADGE AT ALL TIMES DURING THE
CARAVAN WHEN OUTSIDE YOUR AIRSTREAM.**

WBCCI Southeast Coast Spectacular Caravan
WBCCI Caravan N-34-H

INSTRUCTIONS FOR INSTALLING CARAVAN DECALS

LOCATIONS:

A large Atlantic Blue Crab decal, with the caravan name and year, is to be installed on the rear window of the trailer or motorhome.

The smaller blue crab decal is for the rear window of your tow (or towed) vehicle - up high on the road side.

DECAL INSTALLATION INSTRUCTIONS

DO NOT install on glass that is hot or in direct bright sunlight

Clean all grease, road film, dust, etc. from the area where the decal will be placed. Then wet the glass with water in which a little dishwashing liquid has been mixed (or spray with Windex) - flood the surface well. Carefully peel the backing paper off the vinyl decal and place the decal in position on the wet surface. You can slide it around on the wet glass to get it lined up right. Squeegee gently from the center toward the edges, using the edge of the backing paper or some other material, to remove all wrinkles and bubbles (a credit card works well for this). Remove the final paper layer carefully by gently pulling back at a sharp angle while holding an edge of the decal itself against the glass with a finger. Let dry thoroughly before driving or washing the glass.



Caravan Parking Itinerary

- October 4-7 Delaware Seashore State Park
Indian River Inlet
Rehoboth Beach, Delaware 19958
3302-227-2800
- October 8-11 Tom's Cove RV Park
Chincoteague, VA 23336
757-336-6498
- October 12-13 Kiptopeake State Park
Cape Charles, VA 23310
757-331-2267
- October 14-18 Camp Hatteras
Waves, NC 27968
252-987-2777
- October 19-20 Twin Lakes Camping Resort
Chocowinity, NC 2
252-946-5700
- October 21-23 Wilmington KOA
Wilmington, NC 28411
910-686-7705
- October 24-28 Briarcliffe RV Resort
North Myrtle Beach, SC 29572
843-272-2730
- October 29-31 Mt. Pleasant-Charleston KOA
Mt. Pleasant, SC
843-849-5177
- November 1-3 Tuck-in-the-Wood Campground
St. Helena Island, SC 29920
843-838-2267
- November 4-7 River's End Campground and RV Park
Tybee Island, GA 31328
912-786-5518
- November 8-10 Jekyll Island Campground
Jekyll Island, GA 31527
912-635-3021

Schedule for Rehoboth/Dewey Beach (Delaware Seashore State Park)

Rendezvous: Tuesday, October 4, 2005

3:30 – 4:30 p.m. Arrive at rendezvous; park in assigned spaces

5:30 Caravan seafood Supper by 'Hook-em & Cook-em'
(steamed clams, shrimp, scallops, fish, etc.)

General Caravan Meeting follows supper – bring your Caravan Manual

Wednesday, October 5, 2005

See Driving Directions Next Page

10.4c 11:00 a.m. Tour the Zwanendael Museum in Lewes

12:00N Meet at dock for boarding the Kalmar Nyckel

12:00 N Pick up "box" lunch at dock

Jerry J. J. J.

Thursday, October 6, 2005

See Driving Directions Next Page

10:30 a.m. and 12:00 N Tour of Indian River Life Saving Station

NOTE: Split tour: Last names A - Kerr go into the station at 10:30

Last names King-Z walk on the beach nearby till 12:00

Rest of day free

4:30 p.m. GAM #1

Suggestion (Option) The Lifesaving Station has a very nice picnic area.

Friday, October 7, 2005

Free Day

5:30p.m. Drivers' Meeting

Bill fishing

NOTE: Most of our Drivers' Meetings will be held the morning of departure, but this one is different. We have to depart early in the morning, so we'll go over the trip and the next day's schedule the preceding evening.

Saturday, October 8, 2005

Drive to Chincoteague, Virginia (see driving directions page 12)

Parkers/early workers depart 7:30 a.m.

General departures 8:00 – 8:30 a.m.

Caboose departs 8:30 a.m.

19

ON DEPARTING: Please do not leave
trash bags on your campground site.
There is a dumpster to put them in.

Allow 2.5-3 hours' driving time for the trip to Chincoteague.

Arrival time 10:30 – 11:30 a.m.

NOTE: Don't be late - the Chincoteague Oyster Festival begins at 12 noon!

Sun	Mon	Tue	Wed	Thurs	Fri	Sat
WBCCI Caravar N-34-H CALENDAR	Oct. 3	Oct. 4	Oct. 5	Oct. 6	Oct. 7	Oct. 8
Early Workers arrive 3:00-4:00 p.m.	Rendezvous and parking Briefing and Supper	Zwaanendael Mus. Kalmar Nyckel trip w/ lunch	Indian R. LSS tour GAM #1	Free Day Drivers' Meeting	Travel Day a.m. Chincoateague Oyster Festival	Travel Day a.m. Chincoateague Oyster Festival
Oct. 9 Church of your Choice Assateague Island Wildlife Refuge tour	Oct. 10 Free morning Lunch and program in Chincoateague GAM #2	Oct. 11 Free Day	Oct. 12 Travel Day a.m. Shrimp Boil Social	Oct. 13 Free Morning Afternoon beachwalk GAM #3	Oct. 14 Travel Day Chicomamico LSS tour & supper	Oct. 15 Manteo/Roanoke Is. tours
Oct. 16 Church of your Choice <i>with Pastor</i> GAM #4	Oct. 17 Free Day	Oct. 18 Free Day <i>fish</i> Cookout Supper	Oct. 19 Travel Day Catered Supper at Campground	Oct. 20 Estuarium tour Evening Social	Oct. 21 Travel Day GAM #5	Oct. 22 Battleship tour Free afternoon
Oct. 23 Church of your Choice Free Day	Oct. 24 Travel Day	Oct. 25 Free Day	Oct. 26 Free Day <i>Jack myrtle band</i>	Oct. 27 Free Day	Oct. 28 Free Day	Oct. 29 Travel Day <i>not planned S.C.</i>
Oct. 30 Church of your Choice Charleston Boat tour	Oct. 31 Free Day	Nov. 1 Travel Day a.m. Supper and Storyteller	Nov. 2 Beaufort trolley tour	Nov. 3 Free Day	Nov. 4 Travel Day	Nov. 5 Savannah Trolley tour Ships of the Sea Museum
Nov. 6 Church of your Choice Free Day	Nov. 7 Free Day	Nov. 8 Travel Day	Nov. 9 Jekyll Island Club historic tour Free afternoon	Nov. 10 Free Day Final Banquet	Nov. 11 Caravan Disbands	WBCCI Caravar N-34-H CALENDAR

Driving Directions for trips while parked at the Delaware Seashore State Park:

From the Delaware Seashore State Park Campground
To the Zwanendael Museum and the Kalmar Nyckel tall ship

Leave the campground by passing under the bridge to access Del. Hwy. 1 going north.

Turn RIGHT onto Del. Hwy. 1

Go 11.8 miles to the intersection of US-9

Signs for the Cape May-Lewes Ferry terminal, and for the Cape Henlopen State Park, tell you to turn here.

Turn RIGHT on US-9 (Kings Highway) going north into Lewes.

Go 1.6 miles to the town limits of Lewes (there is a sign), where the road splits.

Take the LEFT fork (there is an immediate stop sign), and continue on Kings Highway

Go 0.7 miles to the next stop sign. Note the Zwanendael Museum on your left.

Turn RIGHT onto Savannah Road and go two blocks to a traffic light.

There is a bridge in front of you. Do not cross the bridge.

Turn LEFT onto First Street, and immediately turn RIGHT into the public parking lot.

NOTE: This is metered parking. Walk to the end of the parking lot, pay your fee and get a receipt, and put the receipt inside your windshield. Also note the Kalmar Nyckel tall ship tied up in the water adjacent to the parking lot.

NOTE: There are other alternatives for parking, all of which are acceptable. However finding free parking in this city is not likely.

From the Delaware Seashore State Park Campground
To the Indian River Life Saving Station

Leave the campground by passing under the bridge to access Del. Hwy. 1 going north.

Turn RIGHT onto Del. Hwy. 1

Go 2.2 miles to the Indian River Life Saving Station.

Turn RIGHT into the entrance road, and then LEFT into the parking lot.

Note: This is free parking.

Go across bridge out to land Terry Boat -

8:00 - CB every night



**Driving Directions from Delaware Seashore State Park
to
Chincoteague, VA
(Tom's Cove RV Park and Marina)**

Depart from the campground with a RIGHT turn onto Delaware Hwy #1 (south)
Go 10.7 miles to the intersection of Delaware SR 54 in Fenwick Island Village
Turn RIGHT (west) on Delaware SR 54

Go 11.4 miles to Selbyville, to the intersection of US-113

Note: Watch for the route signs, as SR 54 zigs and zags a lot.

Go south on US-113 for 26.6 miles, to the intersection of Maryland SR 12 (Snow Hill Rd)

Note: There is a yellow flashing light at this intersection.

Turn LEFT (eastward and southward) on MD SR 12

Go 11.1 miles to the VA state line

Continue straight ahead on VA SR 679

Go 7.9 miles to the intersection of VA SR 175 (Chincoteague Road)

Turn LEFT (east) on VA SR 175

Go 8.2 miles to the traffic light at Main Street in Chincoteague (at end of drawbridge)

Turn RIGHT onto Main Street (speed limit 25!)

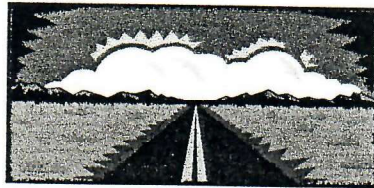
Go 1.5 miles to Beebe Road

Turn LEFT onto Beebe Road

Go 0.3 miles to the campground entrance

Total day's driving is about 77 miles. Allow 2.5 to 3 hours driving time for the trip.

Plan to arrive and park by 12 Noon. Pick up your tickets for the Chincoteague Oyster Festival after arriving and setting up.



Schedule for Chincoteague

Arrive 10:30-11:30 a.m. on Saturday, October 8, 2005

Park at Tom's Cove RV Park

12N Oyster Festival (tickets provided) includes lunch and entertainment.

Sunday, October 9, 2005

a.m. Attend the church of your choice

1:00 p.m. Tour of Assateague Island National Wildlife Refuge* and Wildlife Festival

Buses depart Assateague NWR Visitors' Center at 1:00 and 4:00

Be on time for your group departure. Visit the Festival while not on the bus.

*Split Group Tour - Last names B - Kerr board the bus for the 1:00 p.m. tour

Last names King - Z board the bus for the 4:00 p.m. tour

Monday, October 10, 2005

Free morning

12:30 p.m. Lunch at Don's Seafood in downtown Chincoteague

includes a talk on oyster/clam mariculture by a man who farms oysters and clams

Rest of day free

4:30 p.m. GAM #2

Tuesday, October 11, 2005

Free day

Wednesday, October 12, 2005

9:00a.m. drivers' meeting

Drive to Kiptopeake, VA

9:30 Parkers/early workers depart

11:00-12:00 General departures

12:00 Caboose departs

Allow about 2.5-3 hours for this 74-mile trip

Arrival time at Kiptopeake State Park is 2:30-4:00 p.m.

Some Optional side trips from Chincoteague include

Ray's Shanty (restaurant) 9 miles west of the bridge on SR 175 - highly recommended.

Wright's Seafood Restaurant and Crab Gallery on SR 798 in Atlantic, VA - highly recommended.

Eastern Shore Railroad Museum on US-13, 26.9 miles from the campground.

Ferry to Tangier Island at Onancock, VA on SR 179 west of US-13, about 35+ miles from the campground.

Turner Sculpture Studio on US-13, 36 miles from the campground.

Driving Directions for Day trips from Tom's Cove Campground at Chincoteague

To the Oyster Festival:

From the campground entrance, turn RIGHT on Ridge Road

Go 1.5 miles to a stop sign

Turn LEFT and then immediate RIGHT onto Chicken City Road

Go 0.5 miles to a stoplight

Turn RIGHT onto Maddox Blvd

Go to the traffic circle. The festival grounds are on your right. Find a parking place.

To Don's Seafood Restaurant:

Depart the campground straight ahead on Beebe Road

Go 0.3 miles to the stop sign

Turn RIGHT onto Main Street

Go 1.5 miles to the traffic light

Go two more blocks straight ahead. The restaurant parking lot has a big entrance sign on your left

To the Asasateague Island National Wildlife Refuge Visitors Center:

NOTE: You will need your Golden Age Pass or Golden Access Pass to enter the National Wildlife Refuge!

From the campground entrance, turn RIGHT on Ridge Road

Go 1.5 miles to a stop sign

Turn LEFT and then immediate RIGHT onto Chicken City Road

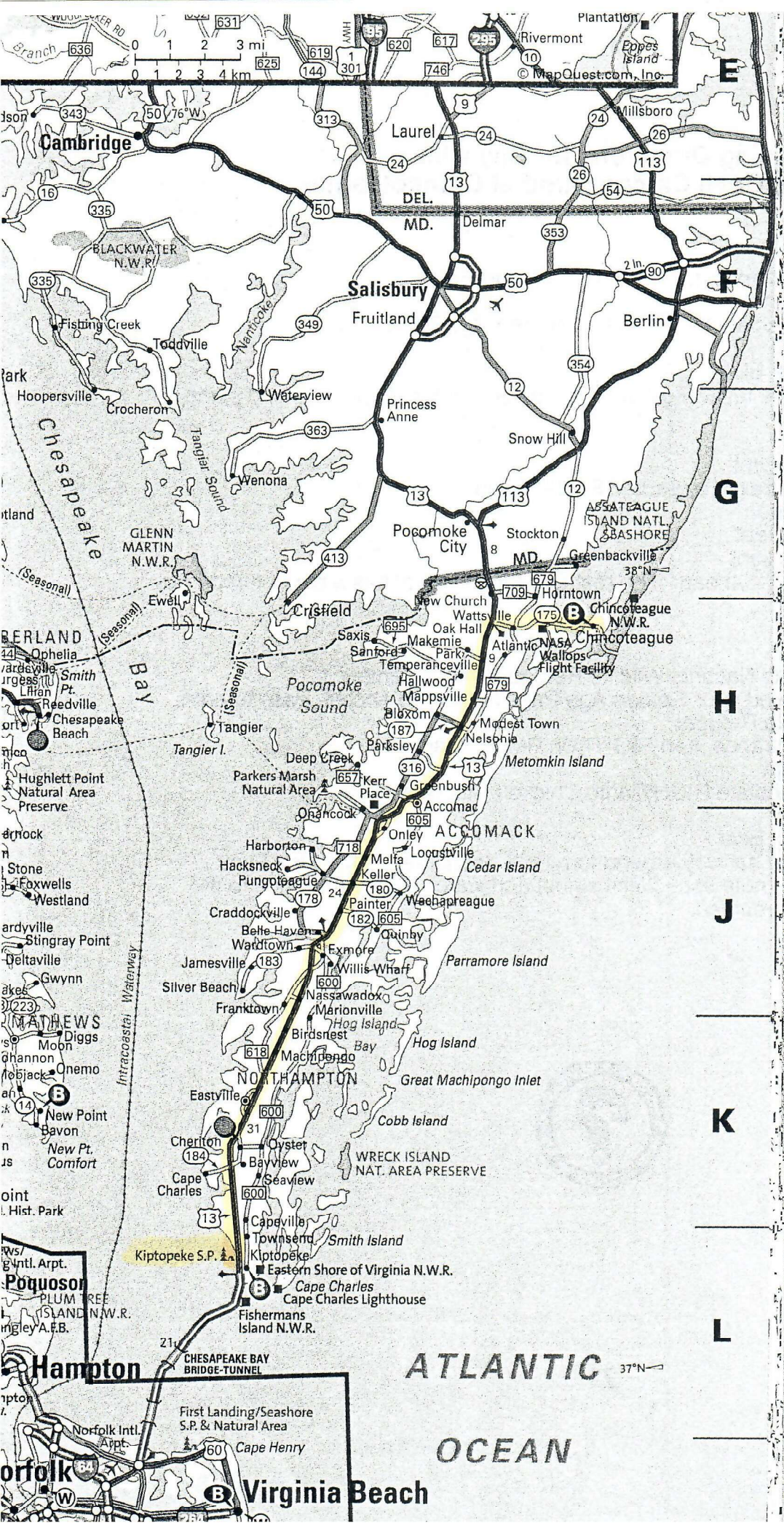
Go 0.5 miles to a stoplight

Turn RIGHT onto Maddox Blvd

Go to the traffic circle, and halfway around turn right (continue on Maddox Blvd)

Enter the Wildlife Refuge (note speed limit signs) and watch for the entrance to the Visitors Center on your left.





ATLANTIC OCEAN

37°N

E
F
G
H
J
K
L

Hampton
Virginia Beach

Driving Directions:

From Tom's Cove RV Park in Chincoteague, VA To Kiptopeake State Park

Depart the campground straight ahead on Beebe Road
Go 0.3 miles to the stop sign
Turn RIGHT onto Main Street
Go 1.5 miles to the traffic light
Turn LEFT (west) onto VA State Road 175 (Chincoteague Road)

Go 10.7 miles to the US-13 intersection (traffic light)
NOTE: You pass through some small towns along the way. Mind the speed limits and traffic signals.

Turn LEFT (south) on US-13
Go 61.7 miles to the Kiptopeake State Park entrance road.

NOTE: You pass through some small towns along the way. Mind the speed limits and traffic signals.

NOTE: When you see Sting-Ray's Restaurant & Truck Stop (Exxon) on your left you should move to the right lane. The turn comes up in about 1.5 miles, right after a Days Inn motel on your right, and is easy to miss. Look for the parkers and their flags.

Turn RIGHT onto Kings Creek Landing Road (Kiptopeake State Park entrance road)
Proceed straight ahead to the entrance kiosk.

Driving day's total mileage is about 74 miles.
Driving time is about 2 hours.
Arrival time is 2:30 – 4:00 P.M.

Some thoughts about the drive:

At the junction of SR 175 and US-13 there are several restaurants and gas stations. The truck-stop Exxon called **Sting-Ray's** has excellent food and probably the best fuel prices on the peninsula, along with ample parking. They also serve gigantic single-dip Haagen-Daz ice cream cones (or at least they did in 2004).

Schedule for Kiptopeake State Park

Wednesday, October 12, 2005

Arrive 2:30-4:00 p.m. and park at Kiptopeake State Park

5:30 p.m. Steamed shrimp social at campground,
provided by the Great Machipongo Clam Shack. Bring a beverage.

Thursday, October 13, 2005

free morning

1:30 – 3:30 bay beach walk/talk by Park Ranger – area ecology and wildlife

4:30 p.m. GAM #3

5:30 p.m. Drivers Meeting

Friday, October 14, 2005

Drive to Nags Head/Kill Devil Hills

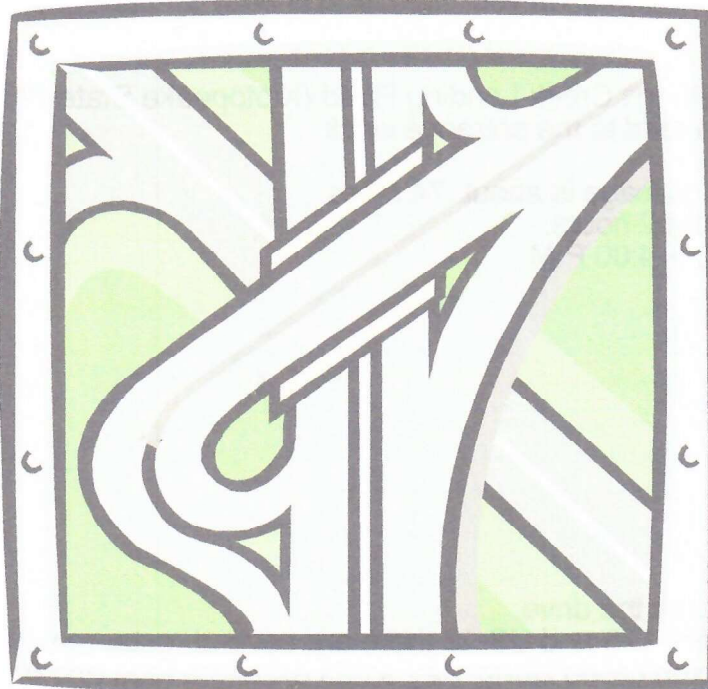
8:00 a.m. Parkers/early workers depart

9:00-10:00 General departures

10:00a.m. Caboose departs

Allow about 3.5-4 hours driving time for this 143 mile trip

Arrival time at Camp Hatteras in Waves, NC is 1:00 – 2:30 p.m.



Possible free time side trips from Kiptopeake include:

Turner Sculpture Studio on US-13 south 38 miles from the campground.

Eastern Shore Barrier Island Center 12 miles north from the campground on US-13.

Driving Directions:

From Kiptopeake State Park To Nag's Head/Kill Devil Hills, NC

Depart the campground straight ahead to the intersection of US-13

At the intersection of US-13, turn RIGHT (south)

Go 3.7 miles to the toll booths for the Chesapeake Bay Bridge-Tunnel

Note: Tolls are about \$20-28 (our motorhome and towed car was \$28 in 2004)

Continue south on US-13 on the bridge-tunnel, 19 miles across the water.

Note: There are no stopping places along the bridge-tunnel with enough room for an Airstream. The pull-offs are for emergency use only, and they do give tickets. Speed limits on the bridge are max 55 min 45.

On dry land again in Virginia Beach, continue on US-13 south for 5.5 miles to the intersection of I-64

NOTE: As you approach this intersection you need to be in the next-to-right lane for I-64 East! Don't get in the lane going toward Richmond!

Exit to the RIGHT under the overpass for I-64 East

(you loop around in the left lane of the exit)

(you actually turn south, but it says it is I-64 east).

Go on I-64-East 10.8 miles to exit #291B

(Chesapeake Expressway to Nag's Head)

Turn LEFT (south) on Expressway – immediately get in the left lane

Note: The road forks almost immediately and you want to stay on the expressway (LEFT lanes)

Go 16.3 miles to the NC State Line

Note: There is a \$1 per axle toll on this expressway

Continue straight ahead, staying on Route 168, for 18.5 more miles, to Barco

At the intersection of SR 168 and US-158 (traffic light), go straight ahead onto US-158 East

Go 34 miles on US-158 to Kitty Hawk

Continue on US-158 East 14.7 miles, through Kitty Hawk, Kill Devil Hills, and Nags Head to Whalebone Junction and the intersection of NC SR 12 South (traffic light)

Turn LEFT onto NC SR 12 South

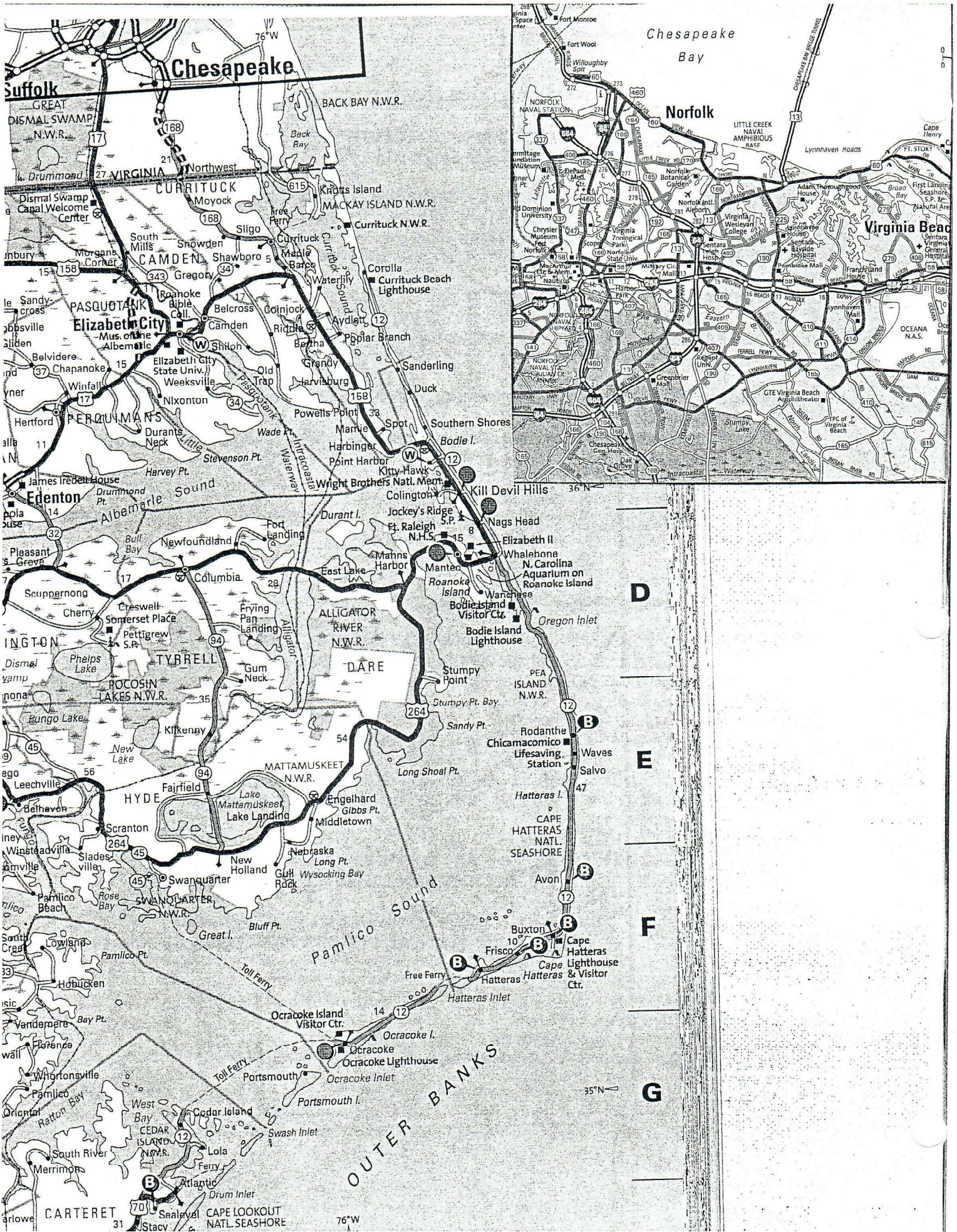
Go 25.2 miles south through the National Seashore to Rodanthe and Waves

The entrance to Camp Hatteras is about a half-mile past the Chicamacomico water tower

Total day's driving is about 143 miles

Allow 3.5 - 4 hours driving time for this trip

Arrival time at Camp Hatteras is 1:00-2:30 P.M.



Schedule for Camp Hatteras, Waves NC

2:30
Arrive 1:00-2:00 p.m. on Friday, October 14, 2005

Park at Camp Hatteras in Waves, NC (soundside)

3:00 Tour of Chicamacomico Life Saving Station (1874) followed by an Eastern North Carolina BBQ supper provided by the station crew

Saturday, October 15, 2005

A day in Manteo on Roanoke Island. This is where Colonial America got started 400 years ago (The famous "Lost Colony"). Your pass gives you admission to the Elizabethan Gardens, Fort Raleigh, the Roanoke Island Festival Park and the ship Elizabeth II, and the Roanoke Island Aquarium. There are many shops and restaurants in this quaint old town as well.

Sunday, October 16, 2005

Church of your choice

1:45 p.m. meet at the Visitors' Center of the Wright Brothers Memorial in Kitty Hawk

2:00 Flight Room presentation & tour of the facility and grounds

Rest of day free

4:30 p.m. GAM #4

Monday, October 17, 2005

Free Day

Tuesday, October 18, 2005

Free Day

5:30 Cookout supper at the campground

Wednesday, October 19, 2005

8:30 Drivers' Meeting

Drive to Chocowinity, NC

9:00 Parkers/early workers depart

10:00-11:00 General departures

11:00 Caboose departs

Some Optional Day Trips from Camp Hatteras include:

Ocracoke Village - quaint outer banks village at south end of highway 12

Buxton - the Hatteras Lighthouse - south on highway 12

Nags Head - old resort town now modernized - north on highway 12

Allow 2.5-3 hours driving time for this approximately 110-mile trip

Arrival time at Twin Lakes Resort in Chocowinity is 3:30-4:30 p.m.

Driving Directions:

From Camp Hatteras in Waves, NC To Twin Lakes Campground, Chocowinity NC

Wednesday, October 19, 2005

Drive north on NC-12 for 25.2 miles to Whalebone Junction

At the junction of NC-12 and US-158, turn LEFT onto US-158 going west

Cross the causeway and bridge to Manteo,
to the junction of US-64/US-264 and US-158

Take Bypass US-64 westward, toward Columbia and Williamston

Drive about 77 miles; across the western part of Croatan Sound, the Alligator River National Wildlife Refuge, the causeway bridge over the Alligator River, and through the towns of East, Columbia, Creswell, Roper, and Plymouth until you reach the town of Williamston and the intersection with US-17.

Take US-17 south, about 23 miles to Washington

Pass through Washington

stay on US-17 across the bridge over the Pamlico/Tar River

After crossing the river, watch for WBCCI signs and parkers. There is a sharp left turn to be made immediately after crossing a rather high bridge, and it is difficult to see the stoplight and turn there until you are right up on it. If you come to an RV sales lot on your right, you have gone too far!

After you make that sharp left turn, proceed about 3 miles to the campground on your right.

Total distance for this trip is about 108 miles

Allow 2 - 2.5 hours for driving time for this trip

Arrival time at Chocowinity is 3:30-4:30 p.m.

Some things to note along the way (possibly worth stopping for) include:

Red Wolves. The Alligator River NWR is the only place on the continent where these small eastern cousins of the grey wolf live.

Creswell is near Somerset Place, a restored antebellum coastal plantation on Phelps Lake.

There are restaurants and fuel stations in Williamston, as well as the coastal region's agricultural fair.

Schedule for Chocowinity

Arrive 3:30 – 4:30 p.m. on Wednesday, October 19, 2005

Park at Twin Lakes Resort

5:30 Catered fish fry dinner at campground

Thursday, October 20, 2005

10:00 Tour of the North Carolina Estuarium, plus a program

12:30 Lunch on your own

Free afternoon

6:30 p.m. evening social at campground

Wednesday, October 21, 2005

8:30 a.m. Drivers' Meeting

Drive to Wilmington, NC

9:30 Parkers/early workers depart

10:30-11:30 General departures

11:30 Caboose departs

Allow about 3 hours driving time for this approximately 123-mile trip.

Arrival time at KOA in Wilmington is 3:30-4:30 p.m.

Some possible side trips while in Chocowinity:

Bennet Family Vinyard and Winery

Bath, NC (oldest incorporated town in the state)

Possible side trips along the way to Wilmington include:

Tryon Palace in New Bern was the seat of colonial government before 1775. Once burned to the ground, it has been fully restored.

There are many good restaurants with parking space near the intersection of US-70 and US-17 in New Bern.

Marine Corps Base Lejeune in Jacksonville is the largest USMC base in the world.

Poplar Grove Plantation at Scott's Hill (on US-17 between Ogden and Hampstead) is a restored antebellum mansion and outbuildings, right on the highway.