



Capers

December - 2016

Candlewood Amateur Radio Association
P.O. Box 741 – Hawleyville, CT 06440-0741

Visit us on the Web at <http://www.CaraRadioClub.org>

President – Marcus Swearingen, AB1WV ab1wv@silverswear.net

Vice President – Jay Albano, N1NRP jjalbano@aol.com

Secretary – Gary Adams, N1GSA mrclipper69@yahoo.com

Treasurer – Bill Webb – W1AFX wjwgrntaxbrkfld@yahoo.com

Directors:

Harlan Ford, W1QH hford01@snet.net

Roger Mitchell, NG1R roger.mitchell@snet.net

Dan Fegley, W1QK w1qk@snet.net

CAPERS is the MONTHLY NEWSLETTER of the Candlewood Amateur Radio Association

Co-Editors: Jay Albano, N1NRP & Dan Fegley, W1QK

Next CARA Meeting: Friday, December 9, @ Stony Hill Fire Station

Doors open at 7:30 Festivities begin at 8:00 p.m.

CARA Annual Holiday Gathering & Potluck

President's Message - de AB1WV



Hello all,

It's been a great month and we are just zooming toward Christmas after a busy Thanksgiving.

We had a great turnout for our YCCC/CARA meeting in November. Dan, W1QK, and Roger, NG1R, gave a great presentation on contesting - and then, the panel discussion was lively and fun. We had 6 members join YCCC.

Just a reminder, that after many years of valuable service to our club, Bill W1AFX, our **Treasurer**, will be stepping down soon. We all thank Bill wholeheartedly. We do, however, need someone to take his place. If you have any interest at all, let's talk. You can contact any of the Executive Committee members or the Directors.

Speaking of positions, we need someone to take over our **CARA Webmaster** duties. This needs to be updated and "spruced up". There are plenty of you out there that are computer inclined, and we need someone to put in a few hours a month to keep things up to date and running. You can contact me or any of the Executive Committee or Directors.

Remember, CARA is YOUR club, and it's as successful as you help to make it.

We are planning a potluck Holiday meeting for December, as in the past. I've had very few members **RSVP to me at this point**, so let's get those in with the number attending and what you are bringing. Remember, as always, family attendance is welcomed and encouraged.

There will be an optional "bring a gift get a gift" exchange. Let's try to keep it under \$15. You can email me at the address below.

There will be two or three items of business for a quick vote in December before the festivities. Due to a misunderstanding on the part of the vendor, we were misquoted on the price for the 2 antenna masts approved at the September meeting. The price is not the \$90 quoted to us earlier, but \$150 each. This is still a good price, but the increase needs to be approved by a membership vote. We also need to vote on a budget if we want pizza for our annual "QSL Squaredance" card sorting party at the January meeting.

Speaking of voting, Dues are coming up again in January. Please submit your dues before the end of February. We'll be removing those not paid from the active roles at that point.

Well, I guess that is all for now (isn't that enough? HIHI). You can always respond to any of these items to the Executive Committee members or Directors, or me personally at AB1WV@silverswear.net.

I hope to see you all at the Holiday Gathering & Potluck on Friday, December 9th.

Remember, doors open at 7:30 pm and the festivities begin at 8 pm.

73
Marcus
AB1WV

Vice-President's Message - de N1NRP



Photo Credit: Greg Davis, KB1YHW

Greetings CARA members:

I hope everyone had a good Thanksgiving . It's hard to believe another year is going by - which reminds me December's meeting will be our annual CARA Holiday Gathering and Potluck. We're having a gift exchange -bring a gift, get a gift for under \$15.00 ham related. **Also let Marcus, our president, know what you are bringing for the pot luck.** I was thinking of making Aunt Jennie's homemade spaghetti and meat balls, but I think I'll just bring a couple of extra-large Pizzas.

Over the Thanksgiving holiday weekend, members of the CARA repeater committee and other interested club members met with our repeater technician, Kevin Magloughlin, KA0JQO. We spent Friday evening and all day Saturday installing the Motorola MSF5K repeater at our test site. It was exciting to link our repeater to the state wide ARES linked system for the Sunday statewide net. Just a few years ago, the only way to participate for me was to connect to the 147.240 repeater in Torrington. Then, when the NARA club put their repeater on the air, I could check into the net there. Either way, it took a good mobile radio or base station to participate. On Sunday, the 26th, Harlan W1QH successfully linked the "Mighty 300" into the linked statewide

repeater system - and now I can participate using only my HT.

Region 5 had a record breaking number of check-ins. For those who don't know- ARES Region 5 is divided into a North and South District. Here in Region 5 South, Harlan, W1QH, is our Area District Emergency Coordinator, ADEC. How cool is that - someone from our own club.

I'm finally getting pretty skilled at programing my radios with Chirp. I just put 250 repeaters in my Dual-Bander. One thing I learned is if you put them in by call sign, you don't know if you're on 2 meters or 440. Call me old fashioned, but I like to see what frequency I'm on.

Well - I hope to see many of you with your families at the Holiday Gathering and Potluck, let's make it a memorable one.

73, Jay - N1NRP

October 14 CARA Meeting Minutes De N1GSA

(We've repeated the October meeting minutes because a business meeting wasn't held at the November meeting.) Editors

Meeting called to order at 8:35 by President, Marcus Swearingen.

The Pledge of Allegiance was recited.

Treasurer reported a balance of \$8732.95

Reports from committees:

Repeater committee chairman was not present due to other commitments. The training for and activation of the Motorola repeater is tentatively set for October 22.

Constitution revision committee has met several times with more meetings to happen in the near future. This has been a long and involved project, but progress has been made. It is hoped that this will be finalized and presented for a membership vote in early 2017.

New business. The next meeting is planned for a presentation by the YCCC (Yankee Clipper Contest Club) The time for the meeting was discussed to be moved to start at 7:00 with the formal presentation starting at 7:30, to accommodate the distance traveled by some of the participants. This should be an informative meeting for all interested in radio, not only for those who are or want to get involved in contesting. It is planned to have a question and answer period for all. Motion made and seconded to change the time. This was discussed and voted in the affirmative.

Holiday party for the December meeting was discussed. There were no takers to chair the coordination of food. There will be a "bring one-get one" gift bag with a limit of \$15 for this. Gifts should be Ham Radio related. This party is open to family and friends.

The January meeting is usually our QSL card square dance. This is to sort QSL cards that come from the ARRL. This is our service to ARRL to help with this sorting. There is a fee that ARRL charges for the QSL bureau service so all should have an account with ARRL. W1JMA, John usually makes arrangements to get the cards here and return them to ARRL headquarters.

The purchase of fiberglass masts was brought up again. The 13 poles, 2 guy rings, 6 tent stakes, and carry bag are all included at a cost of \$90 per set. They are available for pickup in Pennsylvania. Dan

will travel to pick up these kits. Motion made and seconded that the club purchase 2 sets at a cost of \$180. Discussion followed with a vote in the affirmative. The ARRL convention will be Sunday at the Meriden Hamfest.

Meeting adjourned at 9:04
Respectfully submitted by:
Gary S. Adams – Secretary



Combined CARA and YCCC meeting review: November 11

- **YCCC "Introduction to Contesting" PowerPoint**
- **"Ask the Contester" Panel discussion.**



The Candlewood Amateur Radio Association, CARA, hosted a joint CARA/YCCC WCT Area Meeting on Friday, November 11, 2016 at the Stony Hill Fire Department in Bethel, CT. YCCC/CARA members: Roger Mitchell, NG1R, and Dan Fegley, W1QK presented

the YCCC "Introduction to Contesting" PowerPoint, created by W1UE and YCCC President, K1KP.

The highlight of the meeting was an "Ask a Contester" panel discussion – which was similar to the event held during the YCCC meeting at the Boxboro New England Division convention in September.

The YCCC accepted 6 new members at this meeting. Welcome Aboard!

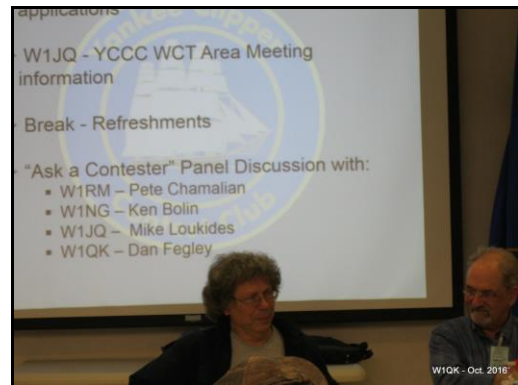


Photo Credit: W1QH & N1NRP

Of particular interest were questions and answers about N1MM+, propagation, running vs. S&P, antennas, station improvements, plus operating tips and techniques.

The meeting was a wonderful opportunity to meet, mingle, ask questions, learn, share, and socialize with other YCCC and CARA members.

Panelists: Peter Chamalian - W1RM, Ken Bolin- W1NG, Mike Loukides - W1JQ and Dan Fegley - W1QK.

Visit www.yccc.org for more information.

Ken Bolin – W1NG



Peter Chamalian – W1RM



Mike Loukides – W1JQ



Dan Fegley – W1QK



The Yankee Clipper Contest Club is an ARRL Affiliated Club

From the YCCC Scuttlebutt newsletter:

Western Connecticut Area Meeting

The Western Connecticut area of the YCCC had a joint meeting with the Candlewood ARA (CARA) in Bethel CT on November 11.

It was an excellent meeting. We had 10 current YCCC members in attendance, and received 6 new members:

New Crew: Sam Dick NV1P James Ritterbusch KD1YV Jay Albano N1NRP

Marcus Swearingen AB1WV Tom Coury WX1T Dan Wright KC1BLR

Welcome and Congratulations!

At the meeting, Dan Fegley W1QK, and Roger Mitchell, NG1R, presented the "Introduction to Contesting" slides developed by K1KP and W1UE.

Then we had an "Ask a Contester" round-table with Pete W1RM, Ken W1NG, Mike W1JQ, and Dan, W1QK. It as an excellent discussion; we

talked about propagation, operating strategy, antennas, and many other topics. Great questions.

Thanks to CARA, to Dan and Marcus, and to all the panelists for participating!

Mike Loukides W1JQ (Western CT Area Co-Manager)

Dave Arruzza W1CTN (Western CT Area Co-Manager in absentia)

CARA REPEATER COMMITTEE

Re: Repeater Committee 28 Nov.2016
Status Report

CARA Repeater Committee Members 2016

KB1YHW chair, W1QK trustee, AB1WV CARA president-ex officio, N1NRP, W1JGM, W1SOP. CARA members interested in serving, please contact the chair.

CARA Linked 2m Meter / Motorola Upgrade Project Report:



CARA Motorola MSF-5000 installation -
November 19, 2016

(L-R) N1NRP, Kevin Magloughlin, KA0JQO,
W1QH, W1JGM, KB1YHW, KC1EDE.

Photo Credits: N1NRP

Sunday night 27 November 2016 was a historic event for CARA and CT ARES... The W1QI 2m CARA repeater was linked into the statewide ARES SEC net for the very first time in the 48 year history of the Candlewood Amateur Radio Association. This linking capability brings a large Fairfield County footprint of coverage into the ARES statewide linked repeater system.



KC1EDE & KA0JQO

A Motorola based MSF-5000 2m Linked Repeater system was commissioned on Saturday 26 November 2016 at Company A firehouse in New Fairfield, programmed to the W1QI repeater frequencies 147.300 MHz (+600 kHz mobile TX shift + PL100 Hz). A separately controlled UHF Linking radio connects and disconnects on demand to the NA1RA UHF repeater hub in Washington CT. A dedicated Link Controller Unit is programmed to respond to remote DTMF control codes and perform the audio routing from both the 2m repeater and UHF link radio receivers, plus audio & Push to Talk control for both 2 meter Primary repeater and UHF link radio transmitters.

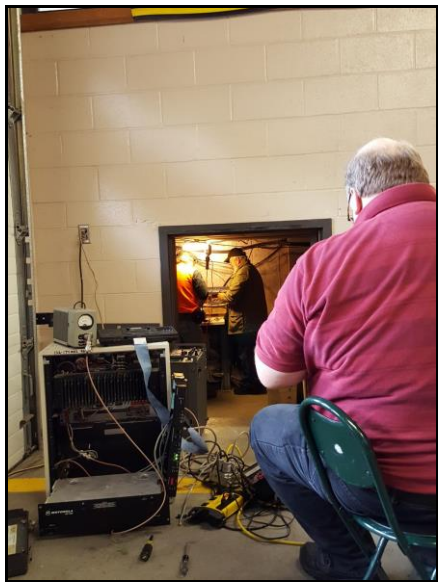
The New Fairfield site is about 6 miles NW of the Spruce Mountain site in Danbury. The CT Spectrum Management Association is aware of and in support of this testing phase strategy for the CARA 2m linked Repeater upgrade.

The CARA 2m Yaesu DR-1X repeater equipment installed at the coordinated CARA 2m repeater site on Spruce

Mountain was turned off Friday afternoon, 25 November 2016.



KB1YHW at Spruce Mtn.



KA0JQO calibrating the CARA MSF-5000 2M Repeater

The CARA repeater committee expects that system testing will be completed over the 2016-17 winter. The CARA 2m Linked repeater system will move to Spruce Mountain in the spring of 2017.

Spruce Mountain has superior propagation in central Danbury and northern Ridgefield, while the New Fairfield repeater site may have some advantages to the north and east. Your feedback and comments are all encouraged and welcomed to help with the testing phase of the CARA 2m linked repeater system upgrade.

To summarize the significance of the achievement: The CARA 2m Repeater can now link with NA1RA. The NA1RA UHF repeater hub links to the KB1AEV UHF Repeater hub in Watertown, which is then linked to the KB1AEV central hub in Vernon CT. The entire Statewide ARES system is carried on the KB1AEV network and is controlled from the Vernon site. The W1HDN statewide amateur radio network is a similar linked repeater system also based from Vernon, CT which supports the the daily ARRL traffic nets. The W1HDN and KB1AEV statewide linked repeater networks provide redundancy for each other. The CT ARES and ARRL Traffic Net systems of Linked repeaters via KB1AEV and W1HDN in the state of CT are the best designed and most comprehensively implemented systems for VHF-UHF amateur radio anywhere on planet Earth. This is a heritage and accomplishment of which CT and the ARRL can be proud.

Future projects priority:

Motorola 2m Linked Repeater system transplant to Spruce Mtn, full time CARA 2m Echolink integration from W1QK home station, 6m repeater revival, 1.25 cm repeater revival.

Yours in service,
Gregory G. Davis KB1YHW



ARES News & Upcoming events:

Connecticut ARES Net - Area 5 (South)

Connecticut ARES Region 5 South conducts a monthly net on the first Wednesday of each month at 7:00 p.m. on the CARA Repeater: 147.300 (+600), CTCSS 100.0

Please check in - All are welcome.



Connecticut Phone Net – CPN

Meets daily: M-F 6:00 p.m. 3.973 MHz.
Sunday: 10:00 a.m. 3.965 MHz.
CARA Contributions:
Wednesday Net control: Harlan, W1QH
Net Manager: Tom, WX1T



Weekly Sunday CARA NETS:
CARA 10M NET – November 13
28.490 MHz. 7:00 p.m.
Net Control: N1NRP

Check-ins:

N1NRP Jay Danbury
WX1T Tom New Fairfield
KC1EDE Eric New Fairfield

N1VTK Joe Danbury
KC1EHW Marlon Danbury
W1QH Harlan Danbury

CARA 2M NET – November 6

W1QI Repeater – 7:30 pm
WX1T Tom New Fairfield Net Control

Check-ins:

KO1F Oscar Danbury
KB1ZAC David Bethel
W1QH Harlan Danbury
W1LCR Frank Goshen
WA2ILY William Southbury
W1JGM John New Fairfield
KB1EPA Efrain Waterbury
N1NRP Jay Danbury
KD2HAP Charlie Wingdale, NY
N1VTK Joe Danbury
AB1WV Marcus Bethel

CARA 2M NET – November 13

W1QI Repeater – 7:30 pm
WX1T Tom New Fairfield Net Control

Check-ins:

KO1F Oscar Danbury
KB1ZAC David Bethel
N1MG Mark Redding
KB1ZAC David Bethel
W1QH Harlan Danbury
N1NRP Jay Danbury
KC1EHW Marlon Danbury
N1VTK Joe Danbury
W1LCR Frank Goshen
AB1WV Marcus Bethel
KC1GGJ Scott Brookfield

CARA 2M NET – November 20

W1QI Repeater – 7:30 pm
KB1ZAC David Bethel Net Control
No report distributed to CARA Reflector

CARA 2M NET – November 27

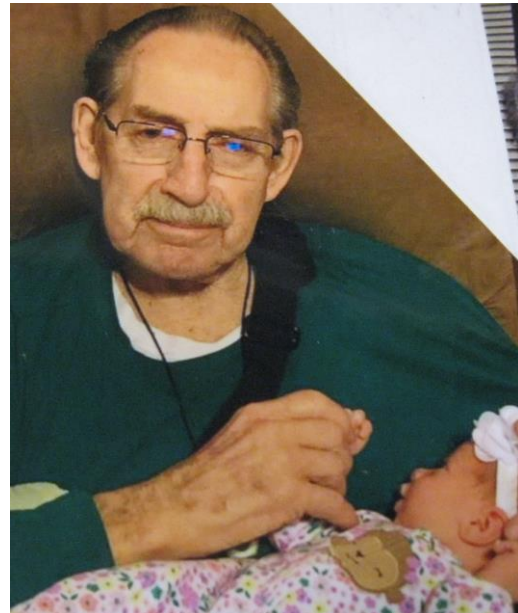
W1QI Repeater – 7:30 pm

WX1T Tom New Fairfield Net Control

Check-Ins:

KO1F	Oscar	Danbury
W1QH	Harlan	Danbury
KB1ZAC	David	Bethel
AC8O	Robert	Newtown
W1JGM	John	New Fairfield
KB1LYP	John	Sandy Hook
N1NRP	Jay	Danbury
KB1YHW	Gregory	Roxbury
N1GSA	Gary	New Fairfield

However, Harlan, W1QH and Jay, N1NRP programmed Andre’s HT so he was able to check in on the Sunday night ARES net via the .240 repeater in Torrington.



Member & Station News:

de W1QK, NG1R, W1QH & N1NRP

KB1QAU – sk



Photo Credit – N1NRP

A “CARA - Compadres” luncheon meetup with Andre Boucher. KB1QAU, at the Twin Colony Diner, Torrington, in July, 2016, organized by Jay, N1NRP.

The assembled group: (L-R) : Jay-N1NRP, Joe-N1VTK, Andre-KB1QAU, Roger-NG1R, Harlan-W1QH, Tom-WX1T.

We talked about getting a G5RV up on the property so that Andre could check into the Connecticut Phone Net on 80 meters daily, but unfortunately, that never happened. He missed not saying hello to CARA friends and checking into the various nets every evening.

Andre lived on Candlewood Lake for many years and had a power boat that he enjoyed using for fishing and cruising.



Harlan and Andre established an annual event of taking a cruise around the lake, then lunch at Down The Hatch in Brookfield. Harlan enjoyed gifting Andre

every Thanksgiving, Christmas and Easter with one of his delicious homemade apple pies. Andre would reciprocate with some home-made vegetable beef stew for Harlan.

"I really enjoyed my times with Andre' - helping to "Elmer" him when he had radio issues. The boat trips were great and going to the "Hatch" was a real treat. Andre', being French Canadian, caused me to brush up on some of the French I learned in High School and we would converse en Francais on the repeater...until my limited vocabulary ran out!

Soixante-treize mon bon ami. Tu vas nous manquer." de Harlan, W1QH

We also talked about his flying adventures.



One of Andre's airplanes – A Stinson Reliant, circa 1937, with a Lycoming 300HP radial engine.

Andre took this picture of his plane on Candlewood Lake, where he routinely used the lake during the winter when possible for take offs and landings.

de Roger, NG1R:

"I first met Andre when I belonged to the Flying 20 Club. We kept three aircraft at

Reliant Air in Danbury where Andre worked in the Line Service group. He was always very knowledgeable and helpful to our club. When we wanted to install a closed-circuit camera to post pictures to our website, Andre ran the wiring for it through the hangar and helped get us online. There are many issues that arise with aircraft and Andre was extremely helpful in resolving them. Whether it was starting with auxiliary power, moving the planes around, getting them serviced, fueling, etc. Andre always knew what was needed and got our members into the air."



Andre also co-owned a WACO aircraft, which he tied down at Reliant Air in Danbury.

To research this article, Roger and I visited Brian Gall, a mechanic at Reliant Air in Danbury, where Andre worked for ten years. Brian told us a story about Andre's experience with an engine failure on his Stinson Reliant. One of the pistons failed over the Hudson River, and Andre throttled the engine back to minimize the vibration - following Interstate 84 back to land at Danbury airport, just before a total engine failure. Brian shared the story that Andre told: "when he was a boy in Quebec, Canada, he'd watch the Reliant's flying over head, then promised himself that one day, he'd own and fly one."

We learned from Brian that the name of the business comes from Reliant Aircraft, the early airplane company that Eddy Stinson formed in 1920.

The original Danbury Reliant Air hanger was totally destroyed by fire in 2007. It was also home to a small helicopter manufacturing company in the 1940's. The new hanger is quite impressive and today the business serves the needs of commercial and private jet and propeller aircraft owners.

Andre also operated a restaurant at Sky Acres airport in Lagrange, NY. In his early work in Danbury, Andre labored as a carpenter.



From Wikipedia:

The Reliant is a three-place high-wing fixed tailwheel land monoplane powered with a variety of radial engines.

1,327 Reliants of all types were made from 1933 to 1941, in different models, from SR-1 to SR-10. The final commercial model, the Stinson Reliant SR-10, was introduced in 1938. A militarized version was first flown in February 1942 and remained in production through several additional versions (all externally identical) until late 1943 for the US and British armed forces.

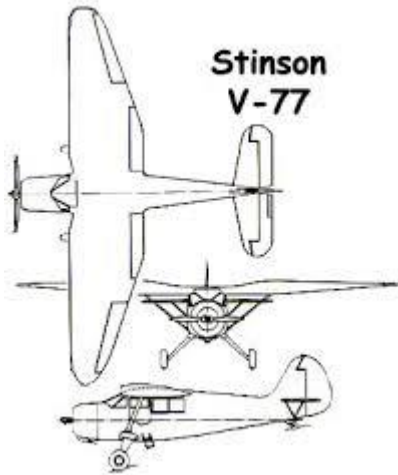
Reliant production can be broken into two distinct types – the straight-wing Reliants (all models up to SR-6) and the gull-wing Reliants (all models from SR-7 and after, including the militarized V-77/AT-19), with there being little in common between the two groups of types. The straight-wing

Reliant had a wing of constant chord and thickness which was supported by two struts each side with additional bracing struts. In contrast the taper-wing Reliant had the broadest chord and thickness of the wing at mid-span, with the outer wing trailing edge heavily angled forward and a rounded cutout on the leading edge root, all supported by a single strut. The taper wing had a significant step up between the fuselage and the wing, and the changes in wing thickness gave it a distinct gull appearance from the front.

The Reliant was used by the U.S. Army in World War II as a utility aircraft, designated UC-81, and as trainer designated AT-19. They were also used by the Royal Navy and Royal Air Force for light transport and communication duties. After the war they were sold on the civilian market as the Vultee V-77.



The V-77 was a spartan version of the SR-10 with the 300 hp Lycoming R680-E3B, a single door on the left side and the traditional "Bump" cowl was replaced with a simpler smooth cowl. Internal structure was beefed up significantly over the commercial models, and a distinctive triangle-shaped counterbalance was added to the rudder.



The Stinson Aircraft Company was founded in Dayton, Ohio, in 1920 by aviator Eddie Stinson 9 years after he learned to fly with the Wright Brothers. In 1925 Stinson would make Detroit, Michigan, the base of operations for his company. Over the next three decades, more than 13,000 aircraft would carry the Stinson brand.



Eddie Stinson in 1921

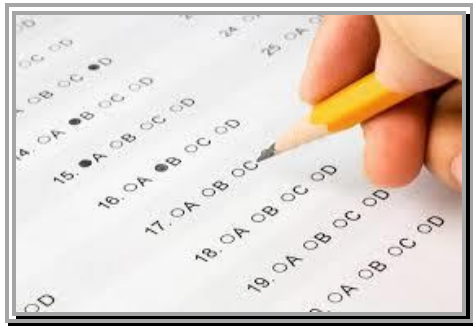


The Stinson Reliant was a rugged aircraft built of fabric-covered welded steel-tubing structures with a single strut-braced double-tapered wing, and one of the last of the tail draggers.

From 1933 to 1941, Stinson delivered 1,327 Reliant's ranging from the SR-1 through the SR-10 each variation building upon its predecessor with upgraded engines and design refinements. The Stinson Reliant SR-10, introduced in 1938, was considered the ultimate, featuring leather upholstery, walnut instrument panels, and automobile-style roll-down windows.



CARA Ham Exam Schedule:



Upcoming ham radio exams sponsored by CARA at the Stony Hill FD.

December 3.

Saturdays - starting at 11:30 a.m. Walk-ins are welcome, but it's helpful if candidates call or e-mail Frank Sileo, N1PE, at 203-438-0218, or send a message to frsileo @ att.net.

EXAM SESSION

12/13/2016 | Litchfield CT 06759-3404

Sponsor: Northwest Amt

Location: Litchfield Firehouse

Time: 7:00 PM (Walk-ins allowed)



From the YCCC Reflector: de K1VR

For many of us, it all had to start somewhere. . .

“Oh, Boy! We’re Radio Engineers!”

Many if not most engineers can tell you when they realized that they wanted to be an engineer. They can point to seeing something,

reading something, visiting something, talking to someone ... I wonder if anyone was swayed by a commercial?



Your Own Radio Station!

There's a great soundbite here ... “Oh, boy, we're radio engineers!” It's a funny old commercial from the 1960s about a “radio station” for kids. Okay, so in fact, it's a radio with a mic attached to talk over the radio but if you're a kid, you probably didn't care.

Many, if not most engineers, can tell you when they realized that they wanted to be an engineer. They can point to seeing something, reading something, visiting something, talking to someone ... I wonder if anyone was swayed by a commercial?

Your Own Radio Station!

There's a great soundbite here ... “Oh, boy, we're radio engineers!” It's a funny old commercial from the 1960s about a “radio station” for kids. Okay, so in fact, it's a radio with a mic attached to talk over the radio but if you're a kid, you probably didn't care.



https://www.youtube.com/watch?v=BXICy1svF_A

**'Tis The Season for some
nostalgia... de W1QK**

**The Remco Caravelle Radio Broadcaster –
your Co-editor's first radio station: circa,
1965**



**Turns out that K1JN had a
similar experience... and is a
fellow YCCC member.**

History of K1JN



It was the very early sixties, my 8th or 9th birthday. My father came home from work and said there was something in the car he wanted me to bring in the house for him. In the car was my birthday present, a **Remco Caravelle**. It was an AM/CW broadcast band transceiver. With it you could broadcast over the household AM set. That was my first exposure to the magic of radio. I recently came across one on eBay and purchased it. I cleaned it up and it works fine. Click [here](#) for a photo of it.

Rush Reunited With Boyhood Radio

May 16, 2003

People ask me all the time when did I first discover I wanted to go into radio and why. I can honestly trace it back to when I was about ten years old, and it's real simple to explain why, which you can hear me do in the audio link below.

Part of my discovery came in the form of a toy radio called a Remco Caravelle. I was certain there wasn't a soul in my audience who knew what a **Remco Caravelle** was, unless you remembered the one or two times I talked about it over the course of 14 years. My mother gave it to me for Christmas in 1962 when I was eleven.

Turns out there was a soul out there, Jim Patrick of Florida, who not only knew what a Remco Caravelle was, but had one in his possession and sent it to me. I couldn't believe it! He also sent along the [cover of the Sears catalog](#) from which it was ordered, and [the page advertising the toy](#).

Now you can imagine what happened to a young Maha Rushie getting his hands on a toy like this. The thing allowed me to broadcast on any frequency I chose over AM radio. It didn't really have much range and only worked in my house, but it had a little microphone and I could play records and such. I had an audience of one, my mother, who would dutifully listen to me playing disc jockey with this thing. It was great, and the best way to describe how I felt receiving this incredible gift from Jim Patrick was instant nostalgia. The care and precision this man he took to package and ship this piece of precious memory to me is touching. It's a tremendous thing that he's done and I can't thank him enough.



[Click to see Remco's Caravelle >](#)

de ARRL Contest Update:

Upcoming Contests:

ARRL 160M: Dec. 3-4
ARRL 10M: Dec. 10-11
RAC Winnter: Dec. 17
Stew Perry: Dec. 17-18
CWT: Dec. 7, 14,21,28

Complete Contest calendar at:

<http://www.hornucopia.com/contestcal/contestcal.html>



2.1. SH/DX command set

- SET/FILTER
- SHow/Filter
- SET/NOFilter
- SET/DX_announcements
- SET/NODx_announcements
- SET/Announcements
- SET/NOAnnouncements
- SET/nodx - You do not get spots from the cluster but you can send them out on the network (i.e for SO unassisted stations)

3. Filter and other examples/features

Setting band/mode type filters are not recommended as they will often block split frequency operations on the low bands. Filter examples AR-Cluster and DX-spider by the [Yankee Clipper Contest Club](#)(YCCC).

3.1. AR-cluster

For full details

see: <http://www.ab5k.net/ArcDocs/UserManual/ArcFilters.htm>

You only want stateside generated spots and announces? Use: **set/filter k/pass**
set/filter k,ve/pass - You will only see DX spots from spotters in the United States (K) and Canada (VE).

set/filter dxbm/reject vhf,uhf - VHF and UHF spots will be suppressed.

Remove all filters with: **set/nofilter**

Examine your settings with: **show/filters**



W1AW Winter Schedule:

QST de W1AW
 ARRL Bulletin 40 ARLB040
 From ARRL Headquarters
 Newington CT November 7, 2016
 To all radio amateurs

SB QST ARL ARLB040
 ARLB040 W1AW 2016/2017 Winter Operating
 Schedule

Morning Schedule:

Time	Mode	Days
1400 UTC (9 AM EST)	CWs	Wed, Fri
1400 UTC (9 AM EST)	CWf	Tue, Thu

Daily Visitor Operating Hours:

1500 UTC to 1700 UTC - (10 AM to 12 PM EST)
 1800 UTC to 2045 UTC - (1 PM to 3:45 PM EST)
 (Station closed 1700 to 1800 UTC (12 PM to 1 PM EST))

Afternoon/Evening Schedule:

2100 UTC (4 PM EST)	CWf	Mon, Wed, Fri
2100 " "	CWs	Tue, Thu

2200 "	(5 PM EST)	CWb	Daily
2300 "	(6 PM EST)	DIGITAL	Daily
0000 "	(7 PM EST)	CWs	Mon, Wed, Fri
0000 "	"	CWf	Tue, Thu
0100 "	(8 PM EST)	CWb	Daily
0200 "	(9 PM EST)	DIGITAL	Daily
0245 "	(9:45 PM EST)	VOICE	Daily
0300 "	(10 PM EST)	CWf	Mon, Wed, Fri
0300 "	"	CWs	Tue, Thu
0400 "	(11 PM EST)	CWb	Daily

Frequencies (MHz)

 CW: 1.8025 3.5815 7.0475 14.0475 18.0975
 21.0675 28.0675 147.555
 DIGITAL: - 3.5975 7.095 14.095 18.1025 21.095
 28.095 147.555
 VOICE: 1.855 3.990 7.290 14.290 18.160 21.390
 28.590 147.555

Notes:

CWs = Morse Code practice (slow) = 5, 7.5, 10, 13 and 15 WPM
 CWf = Morse Code practice (fast) = 35, 30, 25, 20, 15, 13 and 10 WPM
 CWb = Morse Code Bulletins = 18 WPM

CW frequencies include code practices, Qualifying Runs and CW bulletins.

DIGITAL = BAUDOT (45.45 baud), BPSK31 and MFSK16 in a revolving schedule.

Beginning in January 2017, the voice mode used for W1AW's 40 meter voice bulletins will be full-carrier, double-sideband AM.

Code practice texts are from QST, and the source of each practice is given at the beginning of each practice and at the beginning of alternate speeds.

On Tuesdays and Fridays at 2330 UTC (6:30 PM EST), Keplerian Elements for active amateur satellites are sent on the regular digital frequencies.

A DX bulletin replaces or is added to the regular bulletins between 0100 UTC (8 PM EST) Thursdays and 0100 UTC (8 PM EST) Fridays. Audio from W1AW's CW code practices, CW/digital bulletins and phone bulletin is available using EchoLink via the W1AW Conference Server named "W1AWBDCT." The monthly W1AW Qualifying Runs are presented here as well. The audio is sent in real-time and runs concurrently with W1AW's regular transmission schedule. All users who connect to the conference server are muted. Please note that any questions or comments about this server should not be sent via the "Text" window in EchoLink. Please direct any questions or comments to w1aw@arrl.org.

In a communications emergency, monitor W1AW for special bulletins as follows: Voice on the hour, Digital at 15 minutes past the hour, and CW on the half hour.

All licensed amateurs may operate the station from 1500 UTC to 1700 UTC (10 AM to 12 PM EST), and then from 1800 UTC to 2045 UTC (1 PM to 3:45 PM EST) Monday through Friday. Be sure to bring your current FCC amateur radio license or a photocopy.

The W1AW Operating Schedule may also be found on page 83 in the November 2016 issue of QST or on the web at, <http://www.arrl.org/w1aw-operating-schedule>.

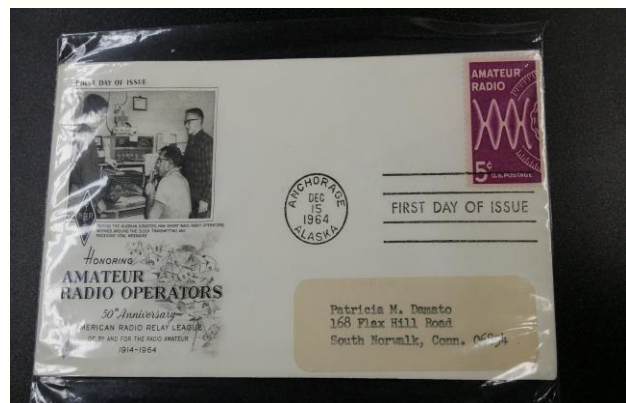


First Amateur Radio Stamp

December 15, 1964

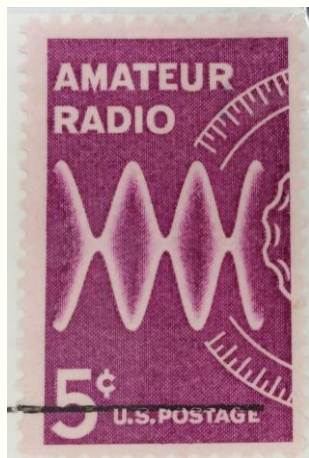
First day of issue

Tnx to Oscar, KO1F for this Capers input.





The members of the Amateur Radio Relay League played an important part in providing essential emergency communications during the devastating 1964 Alaska earthquake. Amateur radio operators provided essential emergency communications, which greatly aided relief and rescue operations. The stamp also honors all those operators who took part during this emergency.



Times have changed, and it costs more than \$.05 to mail a QSL card today.
(...editor)



In 1964 - over Fifty years ago, the U.S. Postal Office published the 5¢ Amateur Radio stamp, Scott #1260. At the time, the stamp honored the 250,000 amateur radio operators in America. It was issued on the 50th anniversary of the founding of the American Radio Relay League, it pictures a radio broadcast wave and radio dial, color lilac.



The first day ceremony for this stamp took place on December 15, 1964 in Anchorage, Alaska.

The reason for the Alaska location was that in March of that year, the largest earthquake in the history of the United States struck Alaska. The earthquake, which measured 8.3 or higher on the Richter scale, caused widespread destruction and with the ensuing tsunami (tidal wave) it caused, the quake took 125 lives.



The WX1T Tower Project Story – Part 3

De Tom Coury, WX1T

The WX1T E-Z Way tower – cranked up for use with a Diamond Dual-bander installed.



Photo Credit: Tom Coury, WX1T

During the next phase of the project, I've taken the Hy-Gain TH-6DXX Tri-Band beam antenna elements out of the garage, given them an inspection, created a list of parts needed to put it all back together, and ordered them from Hy-Gain, which is now owned by MFJ. When they arrive, I'll get it all back together, then get it up on the tower.

Stay tuned...

FB on your progress with this project Tom, and many thanks for sharing the story with Capers readers.

- de W1QK

Your antenna, station, operating activity, or story, etc. will go in this space.

*Just send it to your
CARA Capers Co-Editors:*

Jay Albano, N1NRP
jjalbano@aol.com

Dan Fegley, W1QK
w1qk@snet.net



CW Ops CW Academy:
Interested in learning CW or improving your skills?

Check out www.cwops.org

"CW is an art of incremental improvements over a lifetime, getting ever closer to an ideal of perfection which is always moving and always presents a new horizon to strive for." Carlo Consoli

Worked All Connecticut Counties Award, WACC – Sponsored by CARA:
<http://www.cararadioclub.org/activities>

Here's a handy web site:

<http://www.engineeringtoolbox.com/index.html>

I found some aluminum tubing specifications for an antenna project.

de W1QK

NOTICE TO CAPERS READERS

CAPERS is an important aspect of our club. It's time for **more participation** with this publication.

CAPERS is looking for ANY and ALL input.

Don't be shy, just send a few words, a picture, link, or short message to Jay Albano, or Dan Fegley, your Co-Editors, and we'll include it.
jjalbano@aol.com, w1qk@snet.net

CAPERS deadline for input:
LAST Friday of the Month preceding the meeting.

CAPERS will be released:
Monday before the scheduled Friday monthly meeting – or earlier if possible.

73- Jay, N1NRP Dan, W1QK

Happy Holidays