

## Morrow, Kirk

---

**From:** NDEQ Problem  
**Sent:** Wednesday, January 10, 2018 11:05 AM  
**To:** Sisel, Shane  
**Cc:** Goans, Steve; Chapman, Ryan  
**Subject:** FW: Water Quality Concern  
**Attachments:** Western Sugar, November 2017.pub; IMG\_2054\_Western Sugar.JPG; IMG\_2053\_NDOT receiving ditch\_looking northwest.JPG; IMG\_2052\_NDOT receiving ditch\_looking west.JPG; IMG\_2050\_NDOT receiving ditch\_looking southeast.JPG

RE: Western Sugar Cooperative  
Scottsbluff, Nebraska

NDEQ ID: 44141

PROGRAM ID: 011018-KM-1041

Mr. Sisel:

Thank you for contacting the department. The observations and concerns expressed in the attachments have been recorded and forwarded to the Water Division for further evaluation.

Sincerely,

Kirk Morrow, P.G.  
Emergency Response Program  
Nebraska Dept of Env Quality  
P.O. Box 98922  
Lincoln, NE 68509-8922  
(402)471-8584

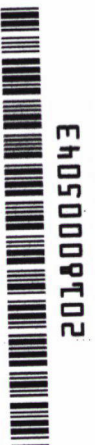
---

**From:** Sisel, Shane  
**Sent:** Friday, January 05, 2018 2:12 PM  
**To:** NDEQ Problem <ndeq.problem@nebraska.gov>  
**Subject:** Water Quality Concern

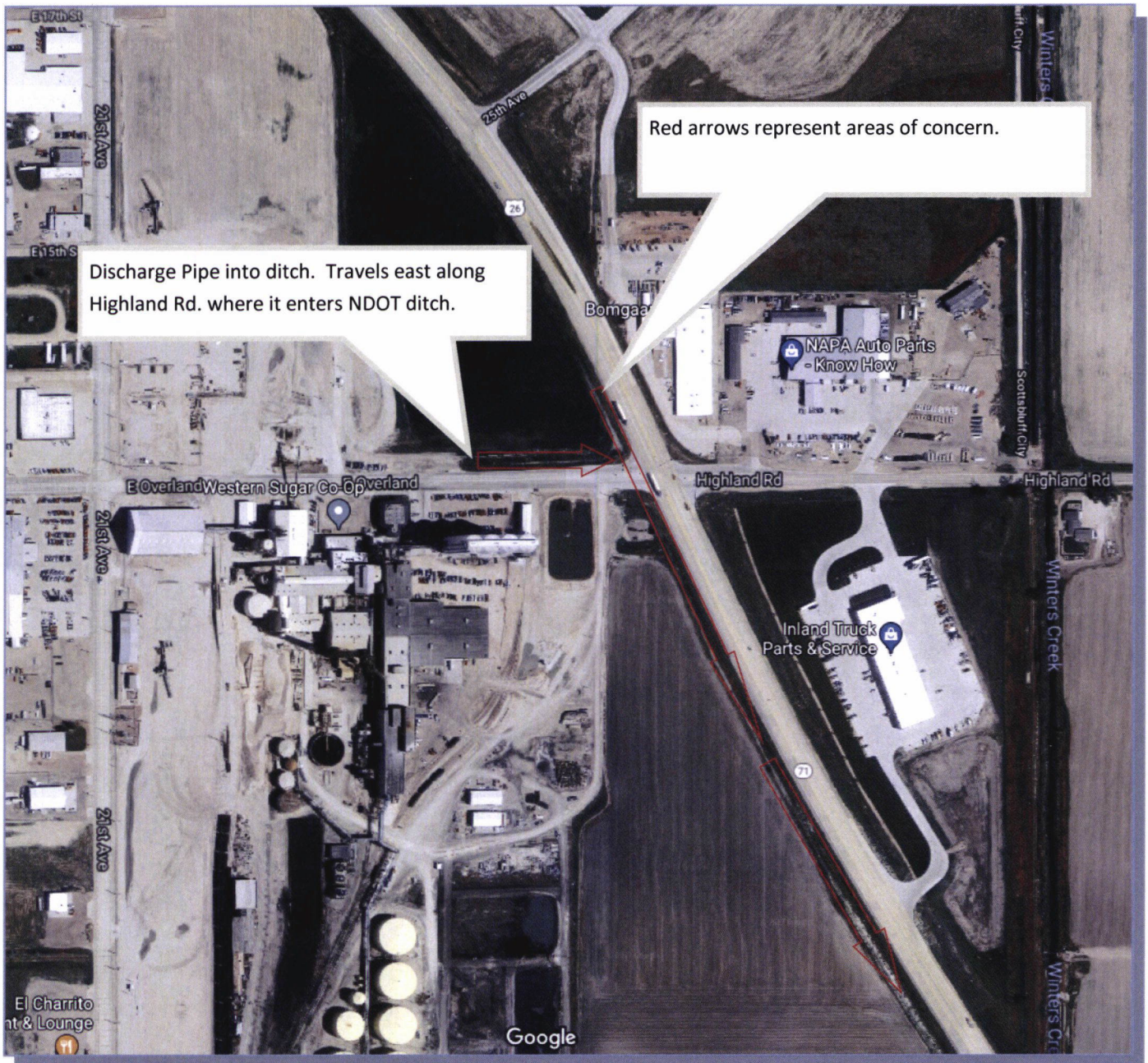
NDOT representatives from District 5 (Scottsbluff) contacted us about a potential water quality issue regarding discharge water from Western Sugar Factory. Attached is a better write up and also some pictures. We are unsure if any water quality issues exist from the discharge, however we wanted to be sure and bring it to the attention of NDEQ for any further investigation.

Thanks

**Shane Sisel**  
*Highway Environmental Biologist*  
**Nebraska Department of Transportation**  
OFFICE 402-479-4656  
[Shane.sisel@nebraska.gov](mailto:Shane.sisel@nebraska.gov)  
[dot.nebraska.gov](http://dot.nebraska.gov) | [Twitter](#)







NDOT District 5 representatives recently contacted the NDOT Environmental Section to report a potential water quality concern regarding discharge water from the Western Sugar factory in Scottsbluff, NE. Discharge water from the facility enters the ditch along Highland Rd on the North side of the facility. From there it travels east and discharges into NDOT drainage ditches. The area is relatively flat and water will pond in areas as depicted in the red arrows on the map above. The general flow direction in the NDOT ditch is to the southeast.

NDOT Environmental Section staff and District 5 Representative visited the site on November 15th and took the included photos of the area. General observation include dark, murky water with a foul odor. A surface sheen/scum can be observed in the photos as well. No samples were taken.

NDOT is unsure if any water quality issues exist from the discharge, however we wanted to be sure and bring it to the attention of NDEQ for any further investigation.

For additional information, please contact Shane Sisel at the Nebraska Department of Transportation. 402-479-4656.











