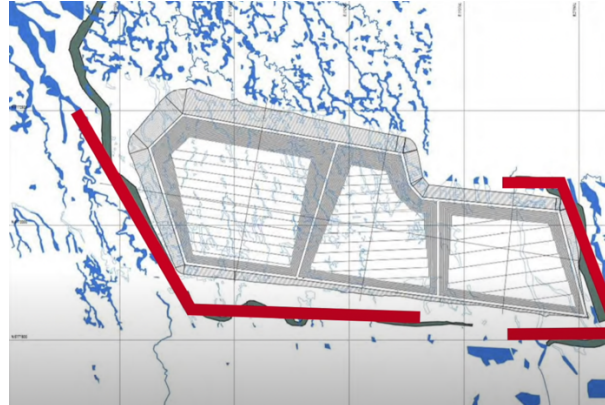



# Copperwood's designs may be dangerously negligent

1) The 323-acre Tailings Disposal Facility, storing 30+ million tons of mine waste, will be erected at the juncture of streams which have been rerouted into unstable and unnatural angles; these streams may swell significantly during spring snowmelt and lead to unexpected erosion.



2) Copperwood's infrastructure, including sewage lagoon and the Tailings Disposal Facility, are only designed to anticipate a one hundred year storm event, **despite the fact that there have been two one thousand year storm events in the immediate area in just the last decade.**

1-in-1000 year storm events:

| 2016   | 2018  |
|--|---|
| <p data-bbox="175 982 727 1024"><b>GOGEBIC COUNTY ROAD COMMISSION</b></p> <p data-bbox="133 1108 773 1209">A 1,000-year rainstorm hit Gogebic County in July 2016. Over twelve inches of rain fell within a four hour period. The historic rain event washed out 30 bridges and culverts. Most of the damage occurred along Lake Road in Ironwood Township</p>  | <p data-bbox="1149 970 1247 1003"><b>2018</b></p> <p data-bbox="818 1012 889 1029">WEATHER</p> <p data-bbox="818 1045 1487 1129"><b>Did a rain gauge really record 1.75 inches a minute in U.P. flash flooding?</b></p> <p data-bbox="818 1142 1006 1159">Published: Jun. 21, 2018, 4:30 p.m.</p> <p data-bbox="812 1167 1513 1276">A nearby rain gauge (at the Houghton County airport) recorded 5.55 inches of rain in just six hours. That rainfall was a 1,000-year event. That means rainfall that intense only has a one in 1,000 chance of occurring in a given year. Those odds are calculated using data from the rain gauge going back to 1887.</p> |

Highland Copper's response from the 2018 public comments session:

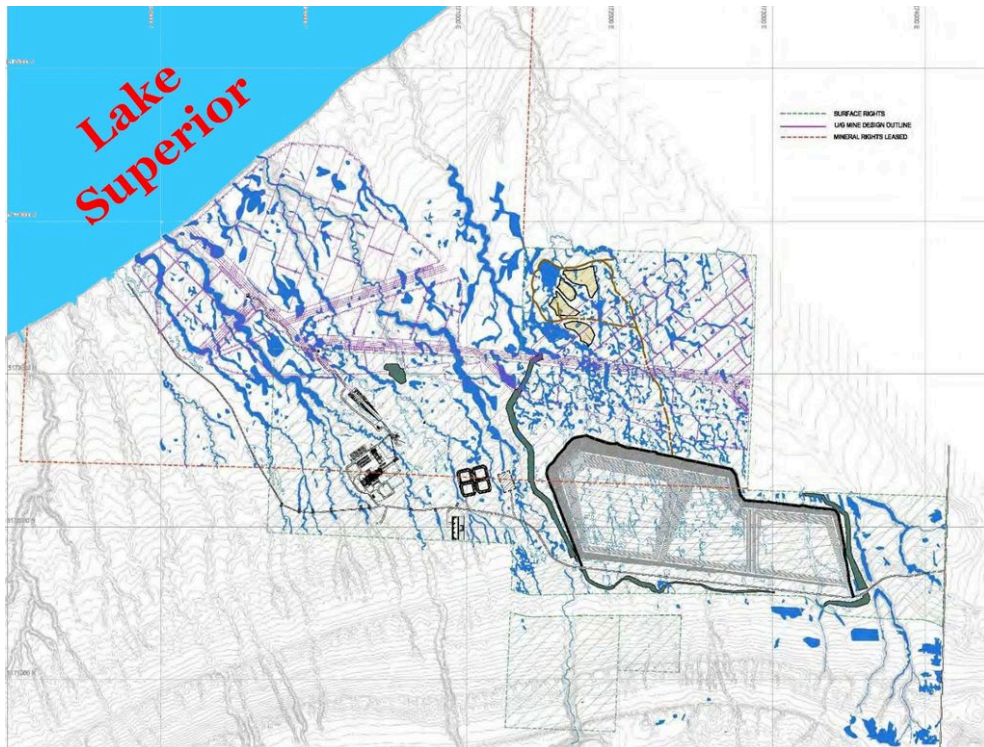
**Response: The infrastructures in question have been designed to facilitate a 100-year storm event and a 50-year combined rainfall and snowmelt event. This was done based on the 13-year mine life. Infrastructures designed on more extreme criteria would enlarge the footprint of the project and are not found to be justified. Emergency Response and Contingency Plans**

To assume that just because the mine will only run for 10-14 years they needn't plan for larger storms, despite documented examples of two 1-in-1000 year storm, is the definition of a GAMBLE.

**When you combine this**



**with this**



**it's hard not to reach the conclusion that there is the very real potential for a catastrophic contamination of Lake Superior, less than two miles downstream.**