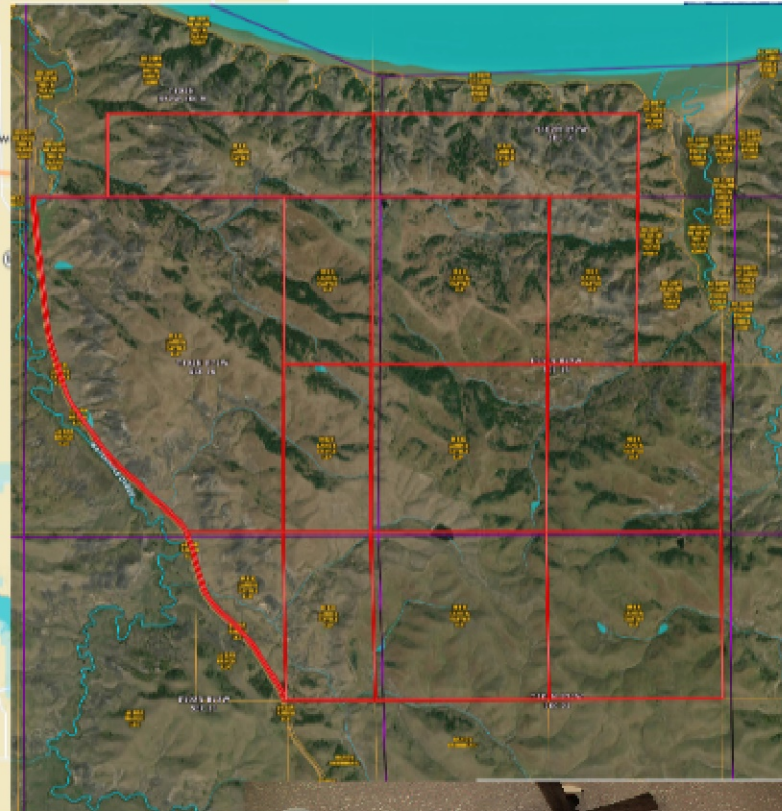
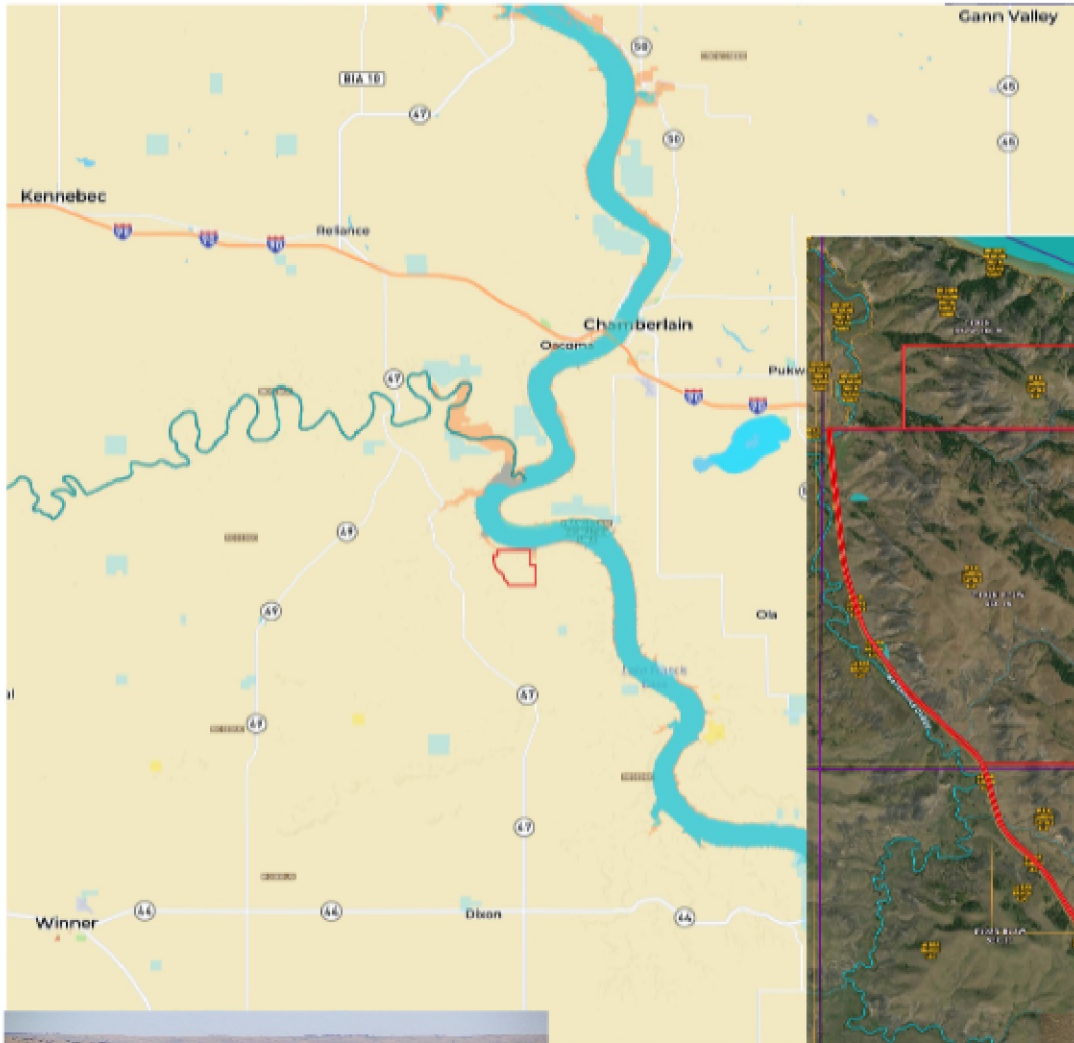


1769.5 (+/-) Acres, in Lyman Co, SD

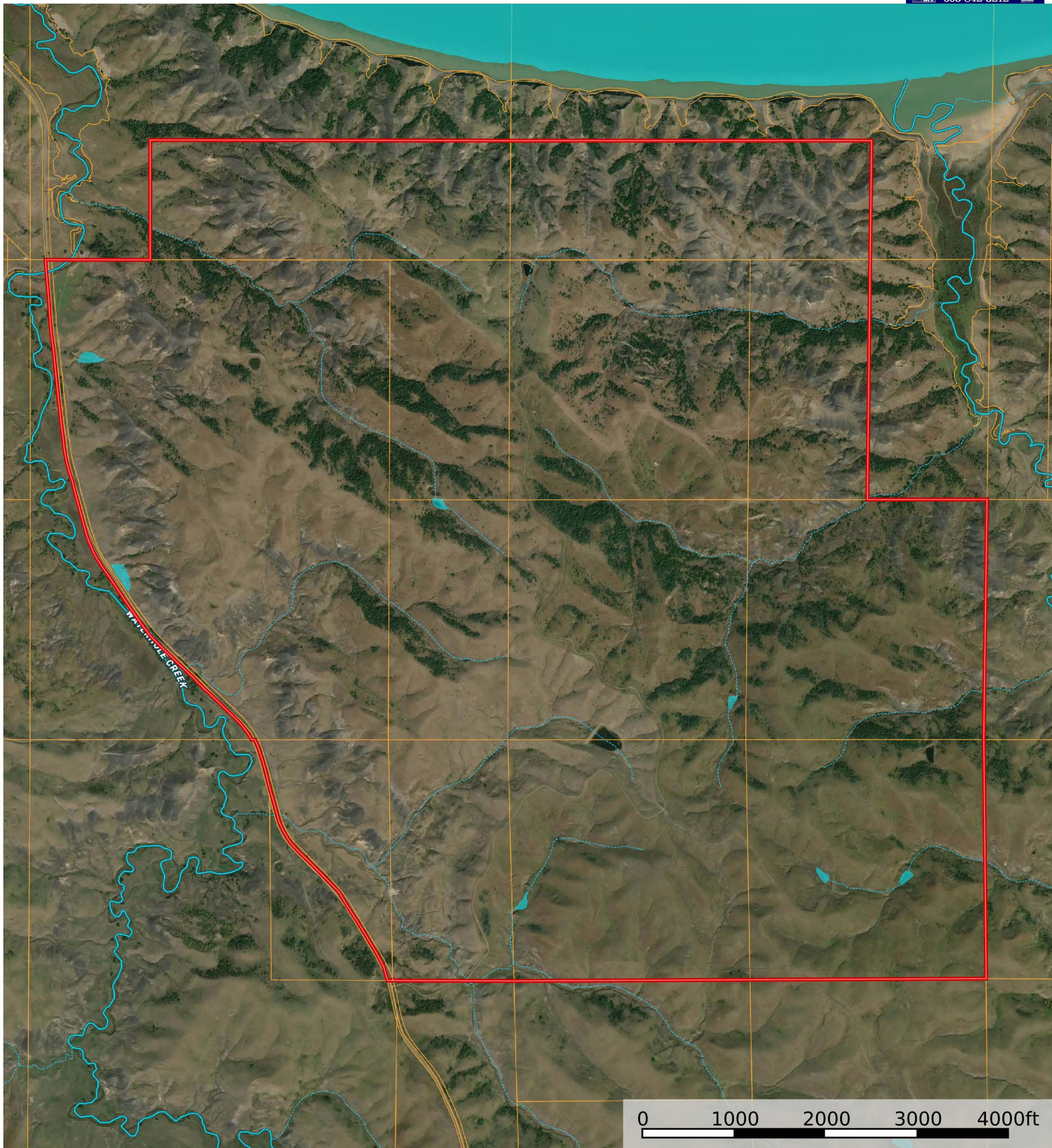
\$2950/Acre



1769.5 acres of grazing land along the Missouri River. 1 artesian well and 12 tire tank locations with Tripp County Rural Water hydrants. This property will run approximately 175 pairs of cattle for 5 months. Multiple fenced pastures with the property for rotation. Breath-taking views of the Missouri River. Great mule and whitetail deer hunting! Don't let this one get away.

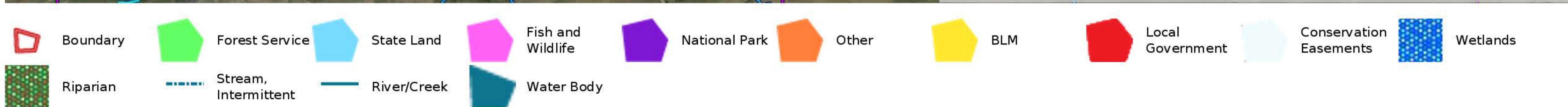
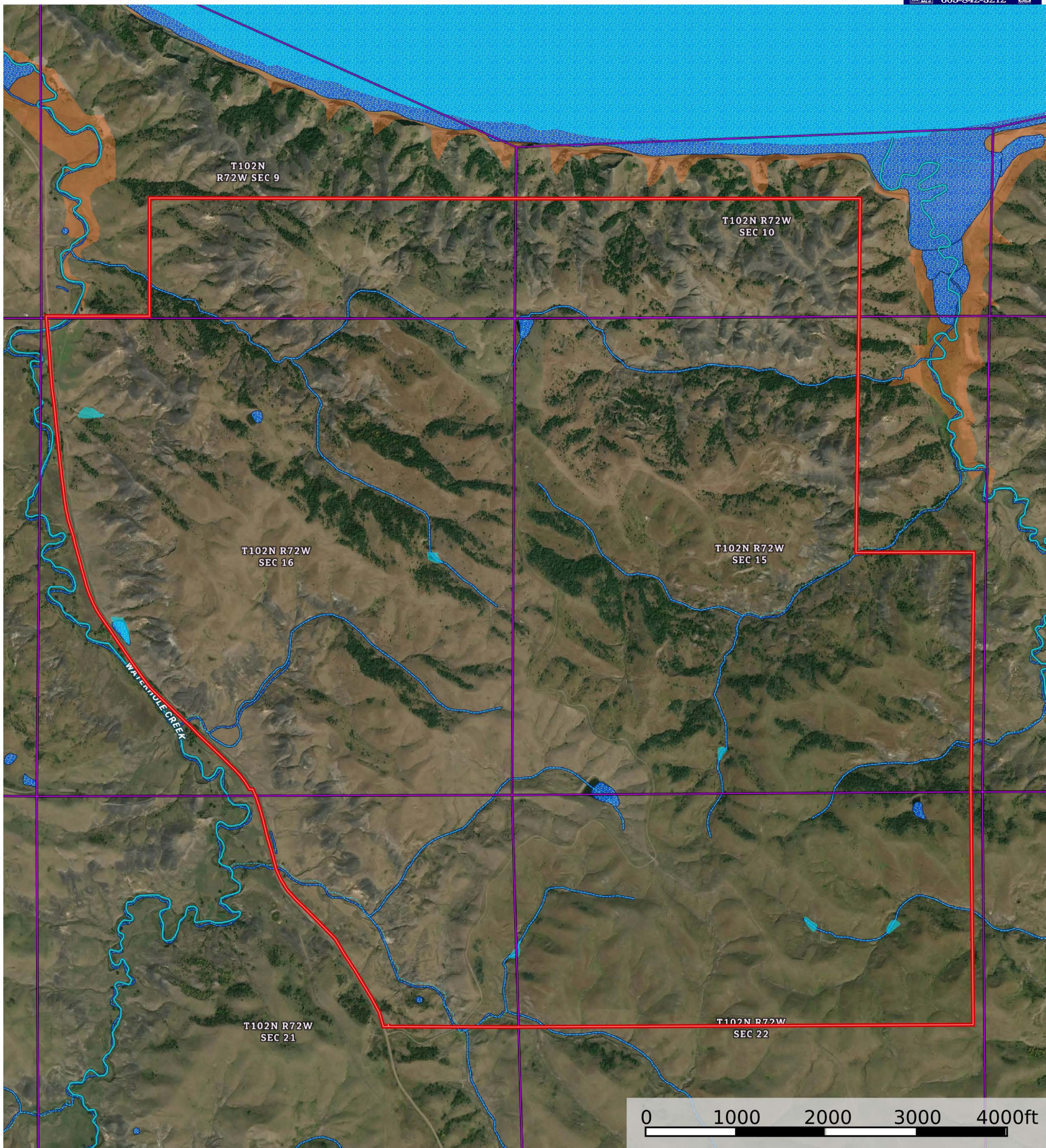
Lyman County, SD Acreage

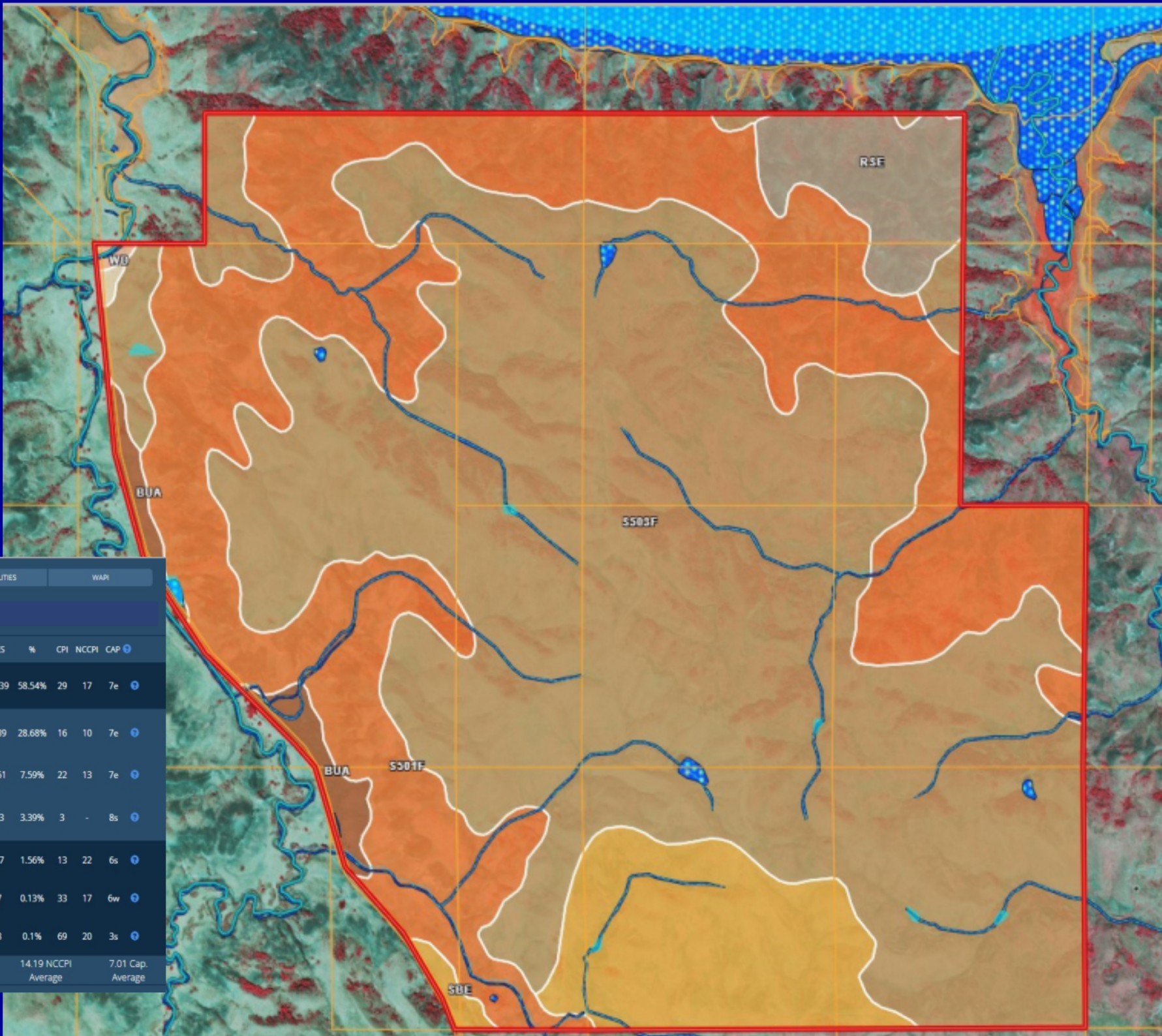
Lyman County, South Dakota, 1769.5 AC +/-



Lyman County, SD Acreage

Lyman County, South Dakota, 1769.5 AC +/-

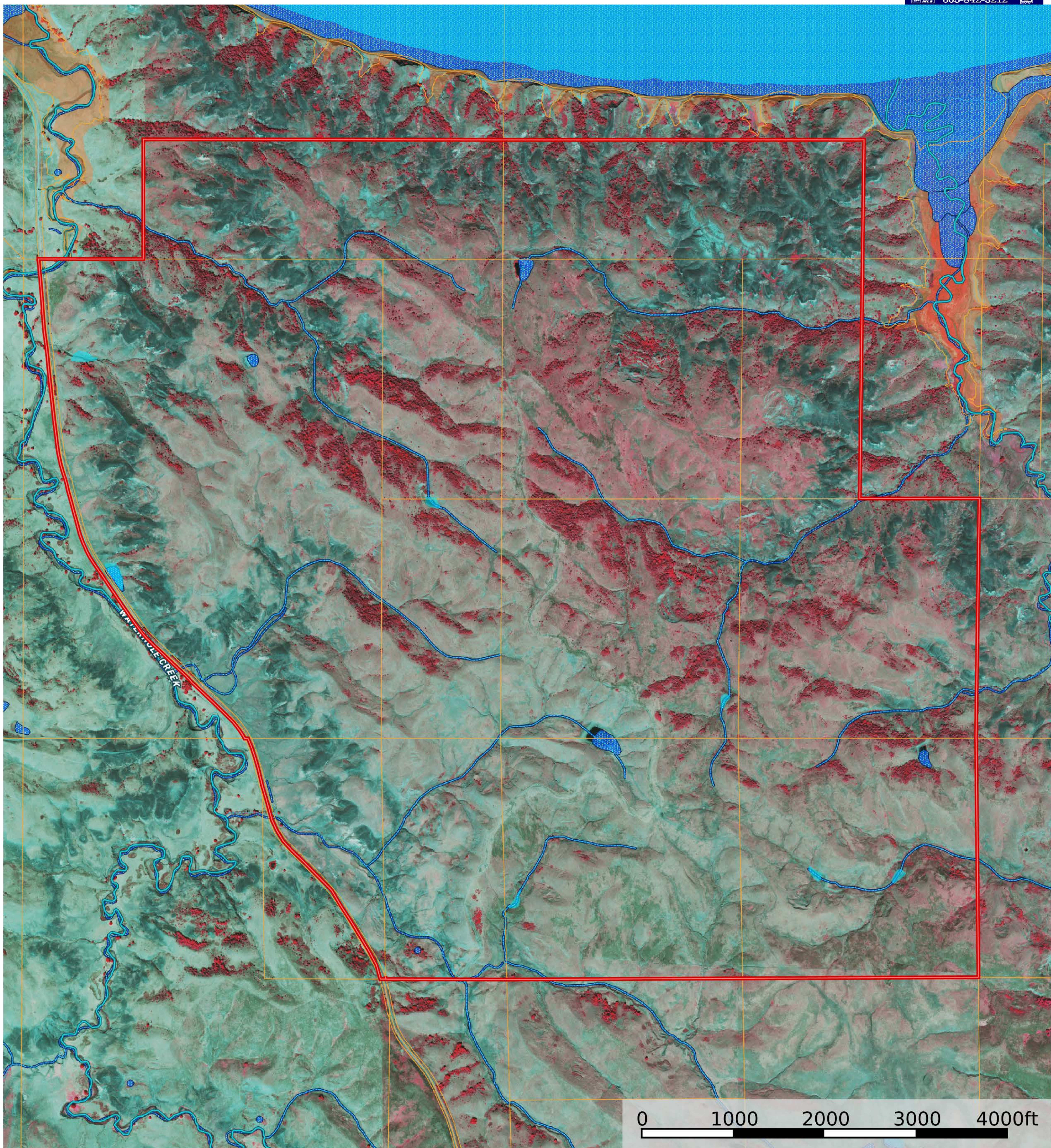




		ACRES	CAPABILITIES	WAPI		
CODE	DESCRIPTION	ACRES	%	CPI	NCCPI	CAP
S503F	Sansarc-Opal-Promise clays, 6 to 35 percent slopes	1030.39	58.54%	29	17	7e
S501F	Badland-Sansarc-Opal complex, 6 to 35 percent slopes	504.89	28.68%	16	10	7e
SbE	Sansarc-Opal clays, 9 to 25 percent slopes	133.61	7.59%	22	13	7e
RsE	Rock outcrop-Sansarc complex, 9 to 40 percent slopes	59.73	3.39%	3	-	8s
BuA	Bullcreek clay, 0 to 6 percent slopes	27.47	1.56%	13	22	6s
Wd	Wendte silty clay, channeled	2.27	0.13%	33	17	6w
PmF	Promise clay, 0 to 3 percent slopes	1.78	0.1%	69	20	3s
		23.65 Average		14.19 Average		7.01 Cap. Average

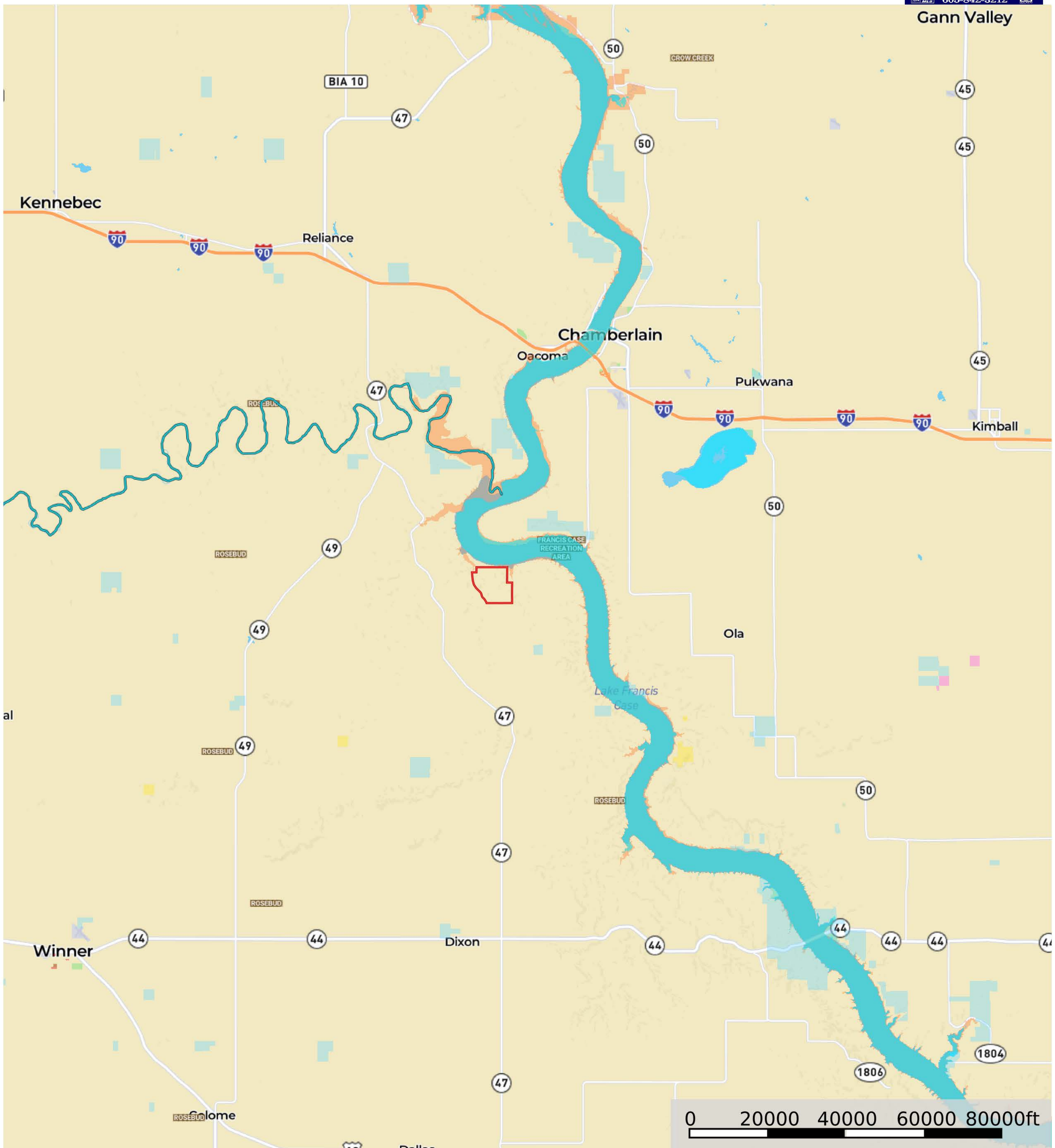
Lyman County, SD Acreage

Lyman County, South Dakota, 1769.5 AC +/-



Lyman County, SD Acreage

Lyman County, South Dakota, 1769.5 AC +/-



Lyman County, SD Acreage

Lyman County, South Dakota, 1769.5 AC +/-

