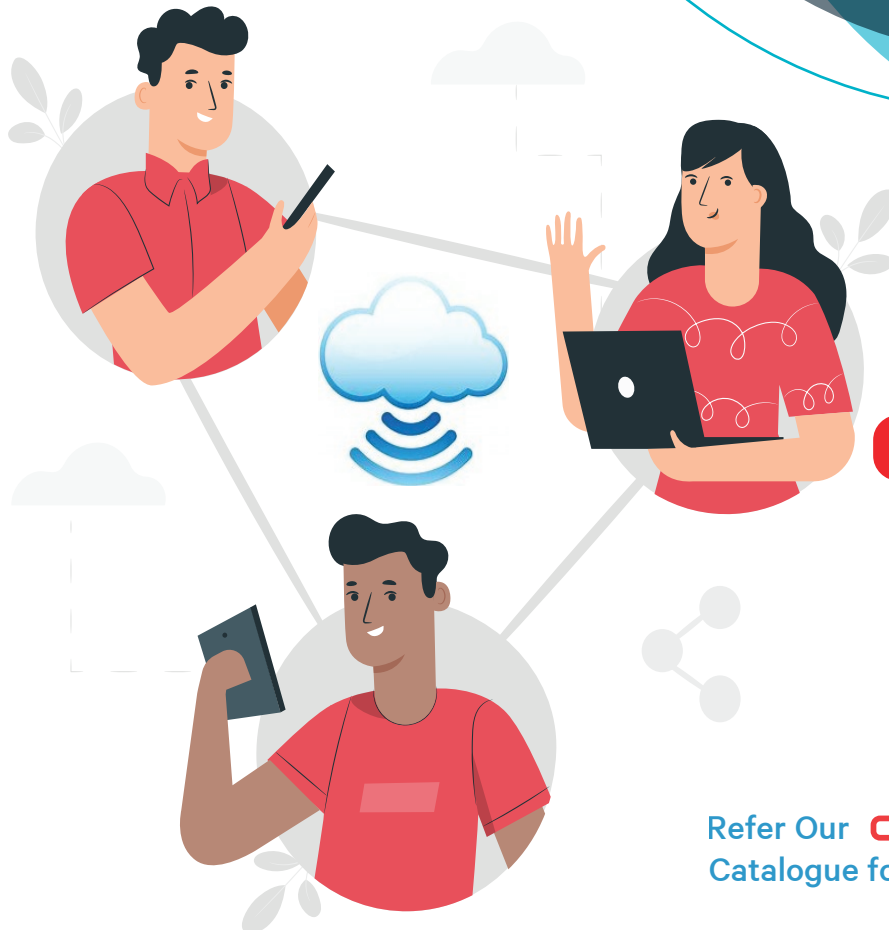


# LoRa Long-Range Transceiver Module

## 869Mhz, Point-to-Point

### Features

- ★ Frequency Band 850-930M
- ★ Multiple transmission modes
- ★ Military-grade
- ★ Transmit Power 30dBm
- ★ RS232/RS485 Interface
- ★ Supports 8~. 28V voltage input
- ★ Auto-repeater networking



Stay Connected with  
**CONNECT+**  
IoT Softwar Solution

Refer Our **CONNECT+**  
Catalogue for More Details



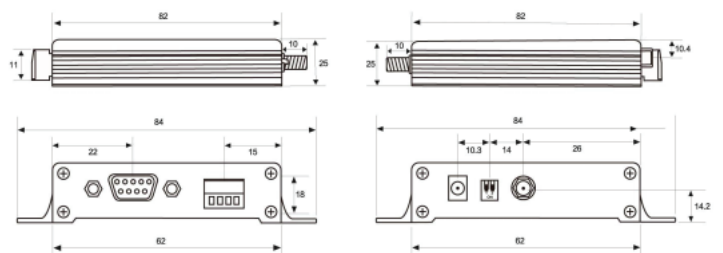
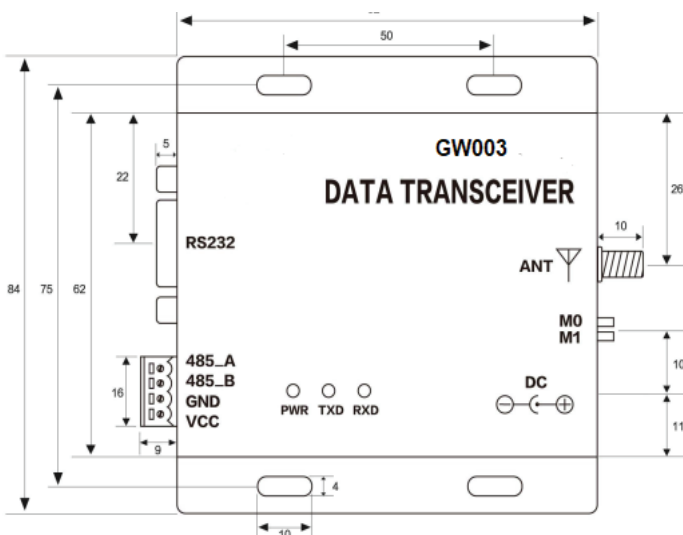
## LoRa Long-Range Transceiver Module

### Technical Specifications\*

RF Parameter	Value	Remark
Working frequency	850.125~930.125 MHz	Default: 868.125MHz
Transmitting power	30 dBm	About 1W
Air data rate	0.3k~62.5kbps	Default: 2.4kbps
Test distance	10000 meter	-

Hardware Parameter	Value	Electronic parameter	Min.	Typ.	Max.	Unit
Size	32 * 62 * 25 mm	Power supply	8	12	28	V
Antenna type	SMA-K	Transmitting current	-	279	-	mA
Communication interface	RS232 / RS485	Stand-by current	-	21	-	mA
Channel numbers	81	Operating temperature	-40	20	+85	°C
Buffer	1000 bytes	Operating humidity	10	60	90	%
		Storage temperature	-40	20	+125	°C



### Labtech Electronics Private Limited

1/3, Kundrathur High Road, Periyapanicheri  
 Chennai-600128, TamilNadu, India  
 sales@labtech.co.in, www.labtech.co.in  
 +91 9840909211, 044-48605048

