

Digital pH Sensor Series

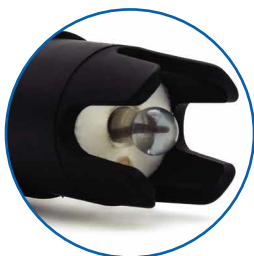


Review

PA1000D digital pH sensor is suitable for general industrial processes, with double salt bridge design, double-layer water seepage interface, and resistance to medium reverse seepage. The ceramic pore parameter electrode oozes out of the interface, which is not easy to be blocked, and is suitable for the monitoring of common water quality environmental media. Adopt PTFE large ring diaphragm to ensure the durability of the electrode;

Application industry: supporting agricultural water and fertilizer machine.

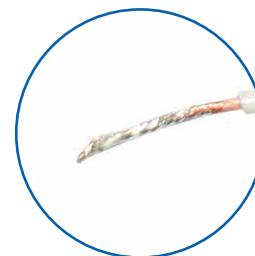
Features



round bulbs, large sensitive area
fast response, stable signal



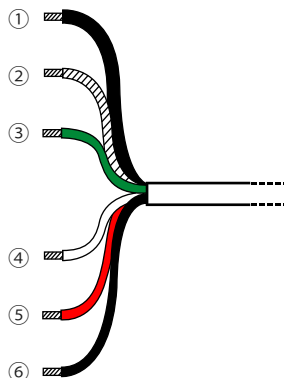
PP material,
Work well at 0~60°C.



The lead is made of pure copper, which can directly realize remote transmission, which is more accurate and stable than the lead signal of copper-zinc alloy.

Wiring

- ① Black V-, ② Transparent line V+, Power supply
- ③ Green I+, ④ White I-, Current
- ⑤ Red A, ⑥ Black B, Communication



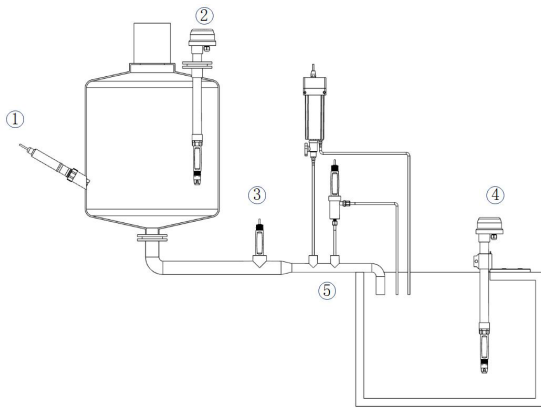


Waterproof and durable
IP68



Adopt PTFE large ring
diaphragm, long life time

Installation

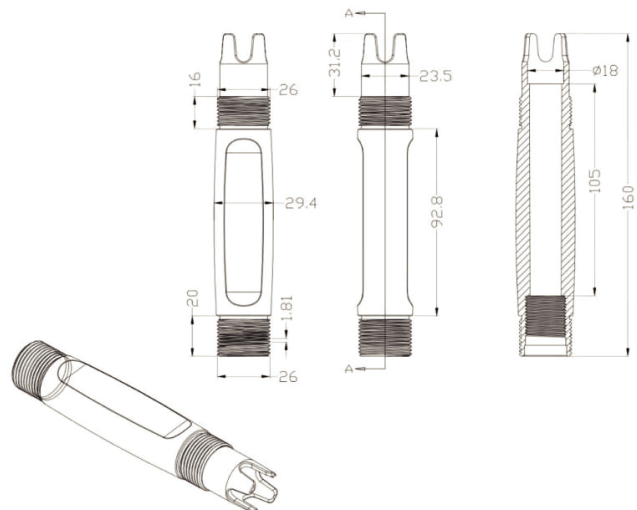


(Common electrode installation)



Specifications

Parameter	Configuration
pH Range	0-14pH
pH Zero	7.00±0.25
Temp Range	0-60
Output Signal	RS485 or 4-20mA
Pressure Range	0—0.3MPa
Temperature Sensor	NTC10K
Housing Materials	PA+GF
Membrane Resistance	<500MΩ
Reference System	Ag/AgCl/KCl
Liquid Junction	Ceramic Cores
Electrolyte Solution	KCl
Double Salt Bridge	Yes
Threaded connection	NPT3/4"
Cable Length	10 m or Customize
Wire Connection	Pin, BNC or Customize



(Overall dimension drawing)

*Specifications Subject to change for continuous improvement. Rev:1



CONNECT+
IoT Solution Enabled

Labtech Electronics Private Limited

1/3, Kundrathur High Road, Periyapanicheri
Chennai-600128, TamilNadu, India
sales@labtech.co.in, www.labtech.co.in
+91 9840909211, 044-48605048

