



WHAT ARE THE
KEY CAUSES OF
CLIMATE
CHANGE EVERY
PAKISTANI
SHOULD KNOW
ABOUT?

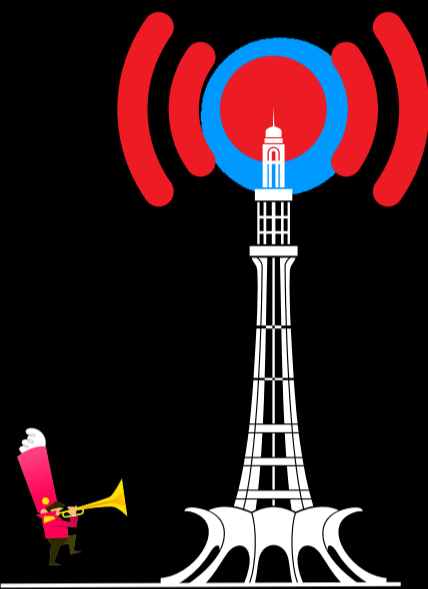
A FUTURE READY PAKISTAN
30.3753° N, 69.3451° E



CLIMATE CHANGE

وجہ

A FUTURE READY PAKISTAN
30.3753° N, 69.3451° E



وجہ



A FUTURE READY PAKISTAN
30.3753° N, 69.3451° E



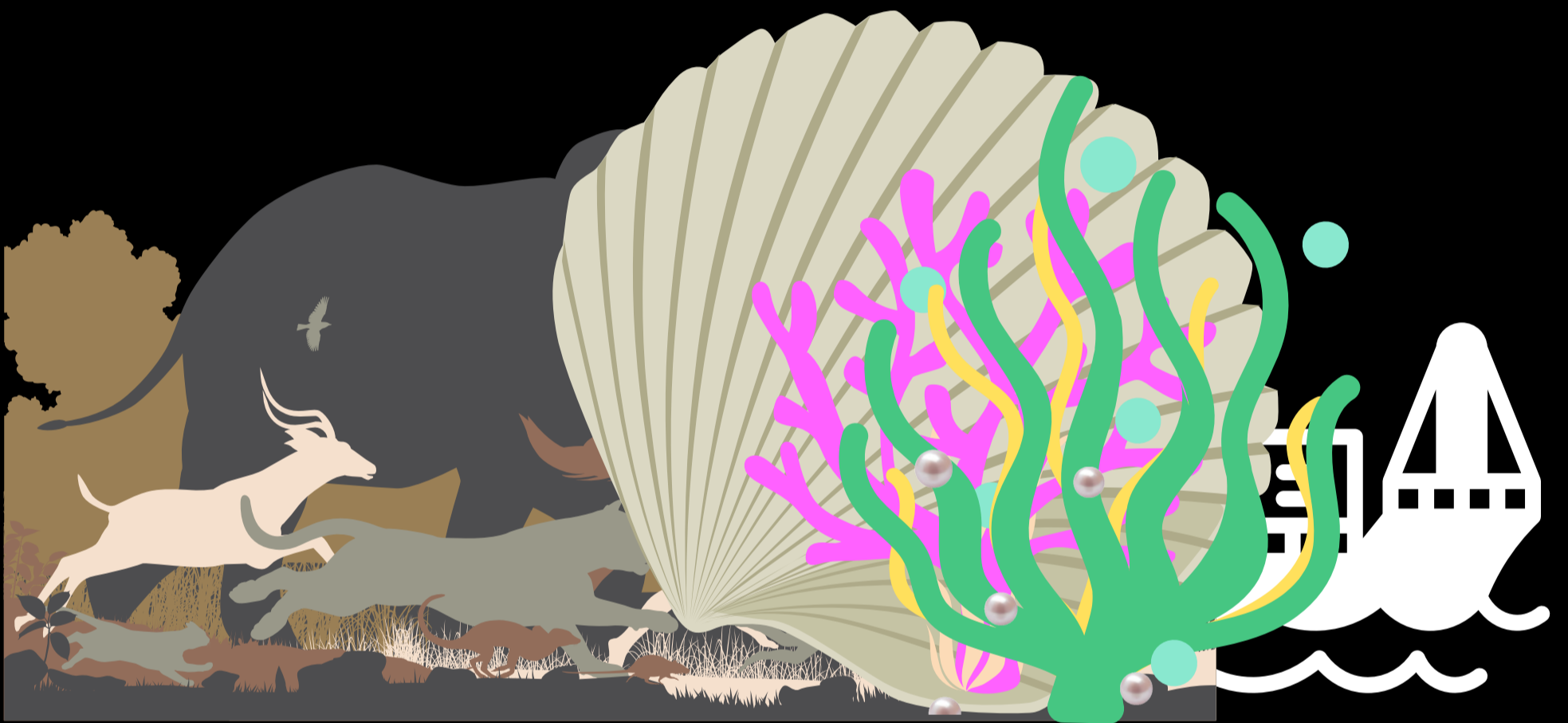
BURNING OF FOSSIL FUELS

A FUTURE READY PAKISTAN
30.3753° N, 69.3451° E



DEFORESTATION FOR AGRICULTURE

A FUTURE READY PAKISTAN
30.3753° N, 69.3451° E



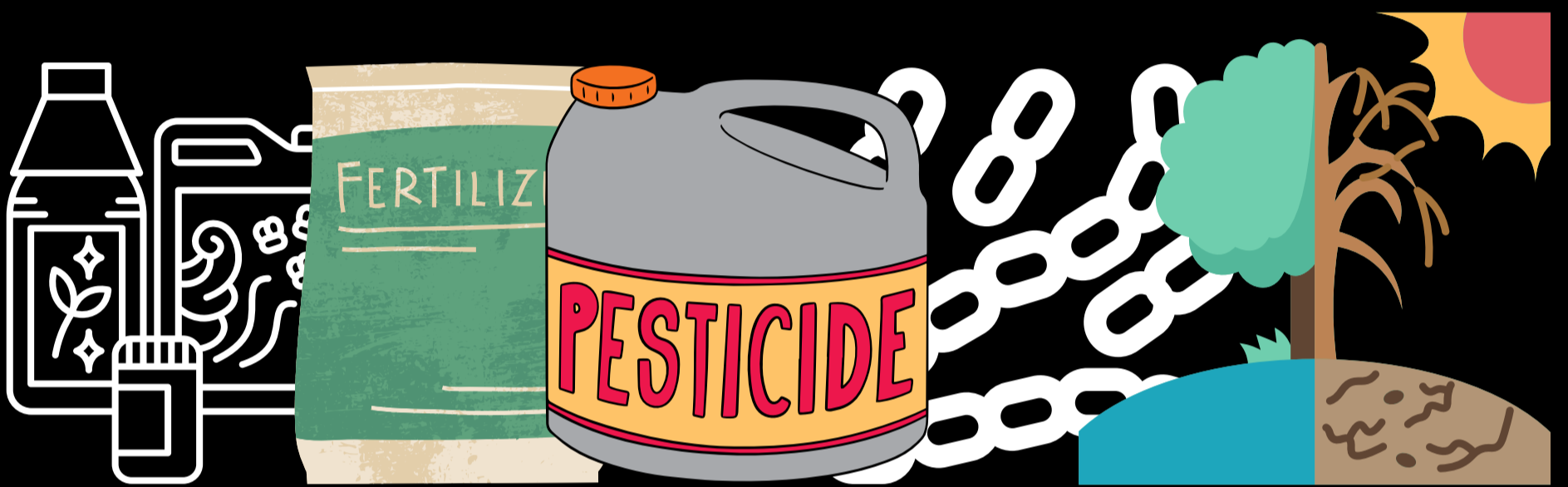
LOSS OF LAND & MARINE BIODIVERSITY

A FUTURE READY PAKISTAN
30.3753° N, 69.3451° E



WASTE & WASTE DUMPING

A FUTURE READY PAKISTAN
30.3753° N, 69.3451° E



**USE OF INDUSTRIAL
(SYNTHETIC) FERTILIZERS &
PESTICIDES AS INPUTS FOR
FARMING - KILLS HEALTHY
SOIL MICROBE & REDUCES
ABILITY OF SOIL TO
CAPTURE CARBON**

A FUTURE READY PAKISTAN
30.3753° N, 69.3451° E



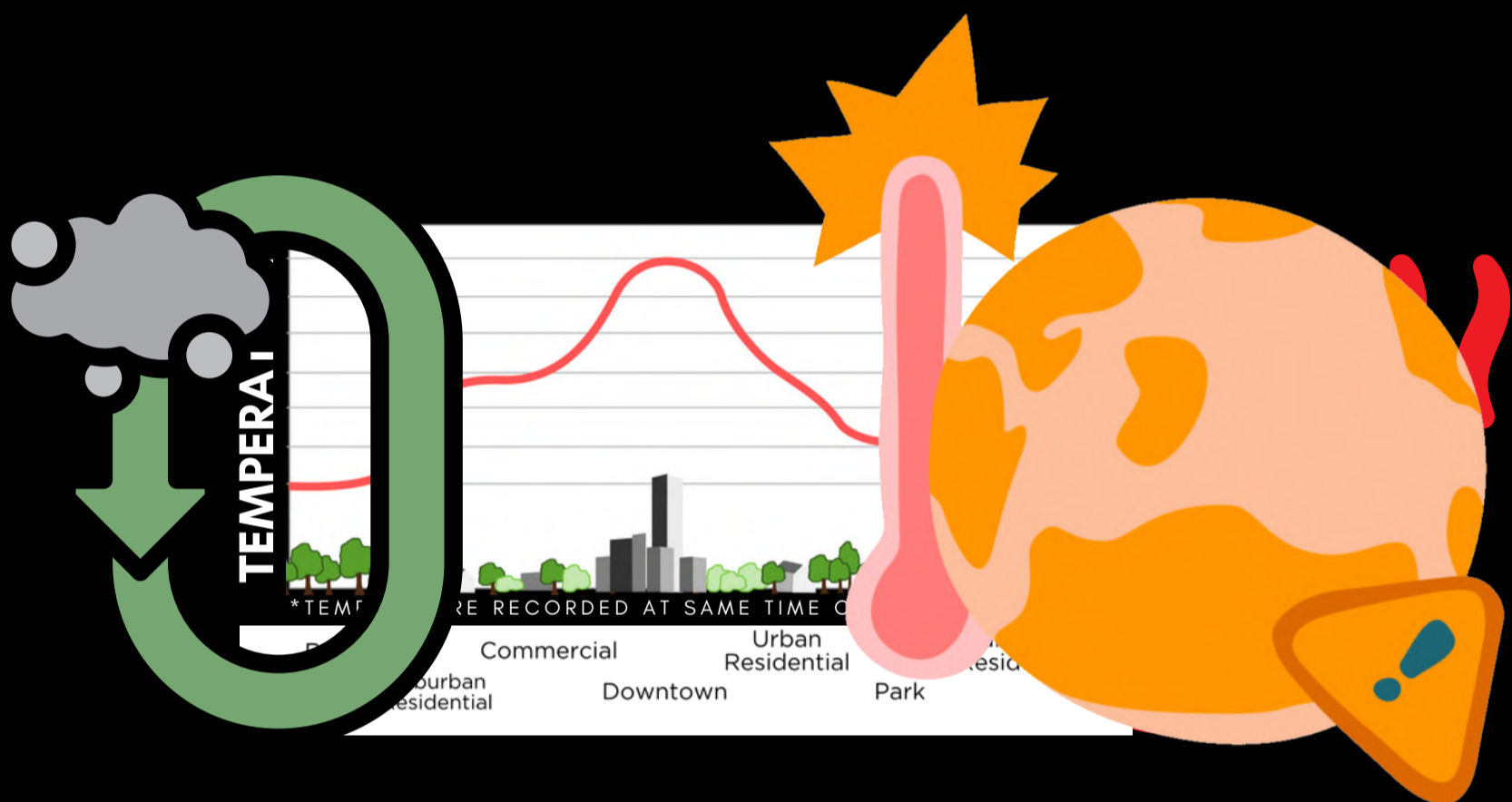
**RAPID URBANISATION &
REMOVAL OF NATURAL
GREENING & BIODIVERSITY
IN URBAN ZONES**

A FUTURE READY PAKISTAN
30.3753° N, 69.3451° E



**INTENSE SEASONAL
CROP RESIDUE BURNING
BY CERTAIN DEVELOPING
COUNTRIES**

A FUTURE READY PAKISTAN
30.3753° N, 69.3451° E



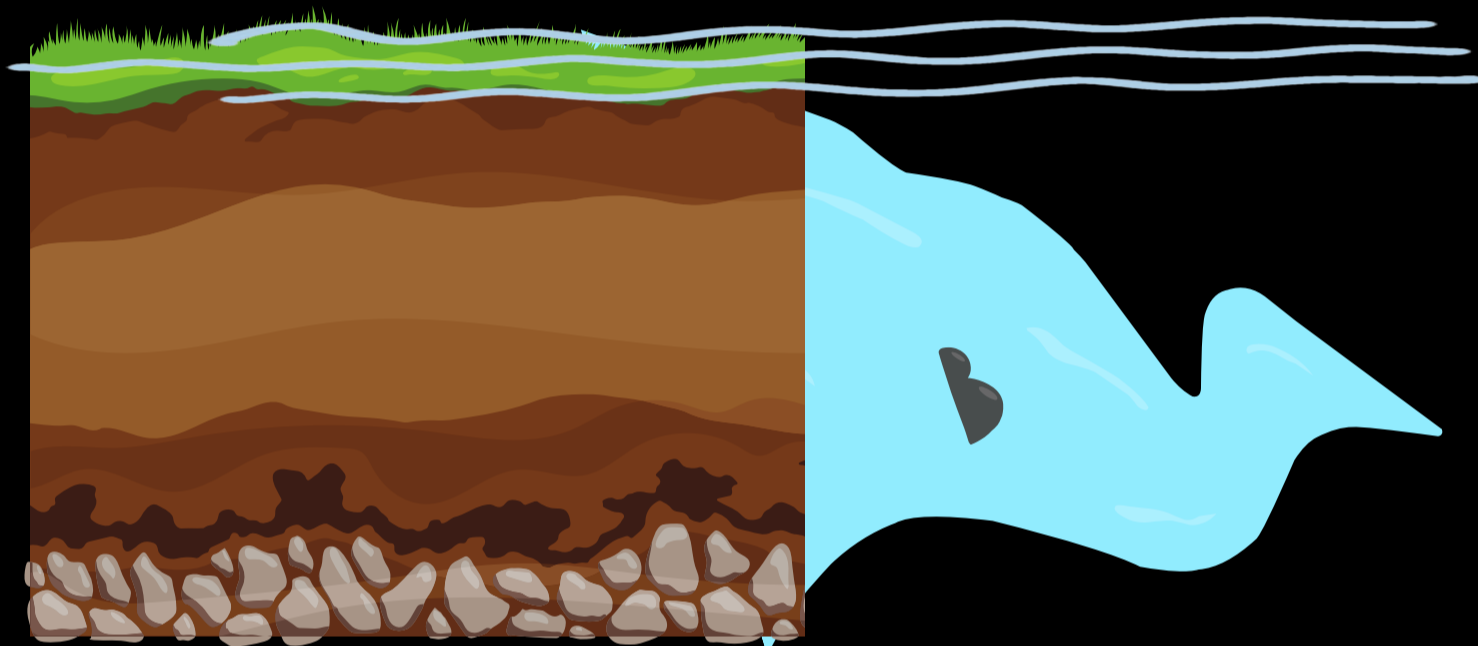
HEAT & DANGEROUS GHGs GENERATED FROM URBANISATION - UHI EFFECT

A FUTURE READY PAKISTAN
30.3753° N, 69.3451° E



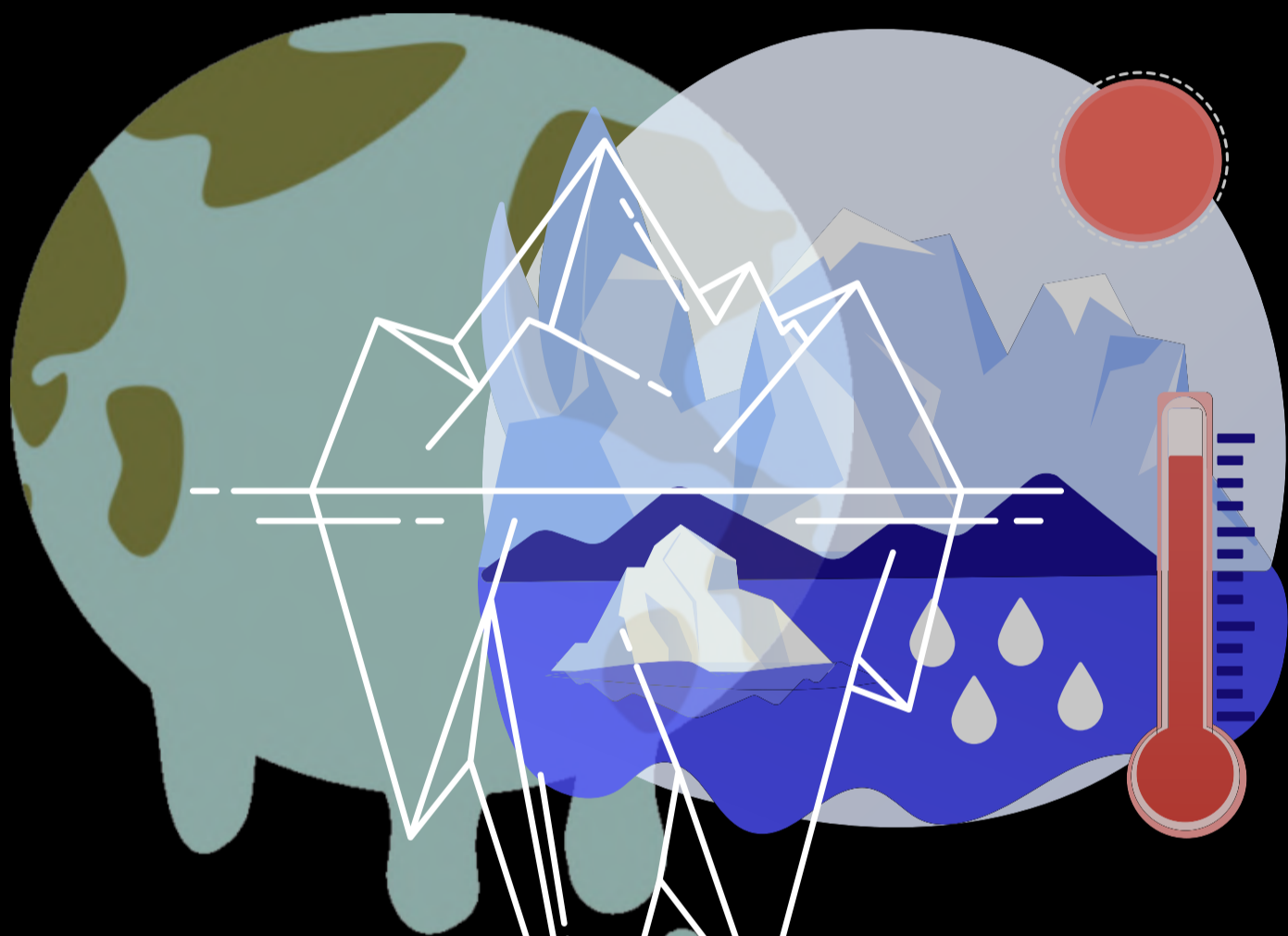
**DANGEROUS GHGs
GENERATED FROM FOOD
WASTE GOING TO
LANDFILLS**

A FUTURE READY PAKISTAN
30.3753° N, 69.3451° E



GLOBAL SOIL & RIVER SYSTEM DEGRADATION

A FUTURE READY PAKISTAN
30.3753° N, 69.3451° E



**MELTING GLACIAL WATER
MIXING WITH SEA WATER -
MARINE ECOSYSTEM
DEGRADATION**

A FUTURE READY PAKISTAN
30.3753° N, 69.3451° E



FOREVER



**FOREVER CHEMICALS
IN RAIN WATER**

A FUTURE READY PAKISTAN
30.3753° N, 69.3451° E



WHAT ARE GHGs?

Greenhouse Gases are gases generated from The Planet's Products engineered by Human Systems & Processes that CONTRIBUTE to Global Warming & Climate Change.

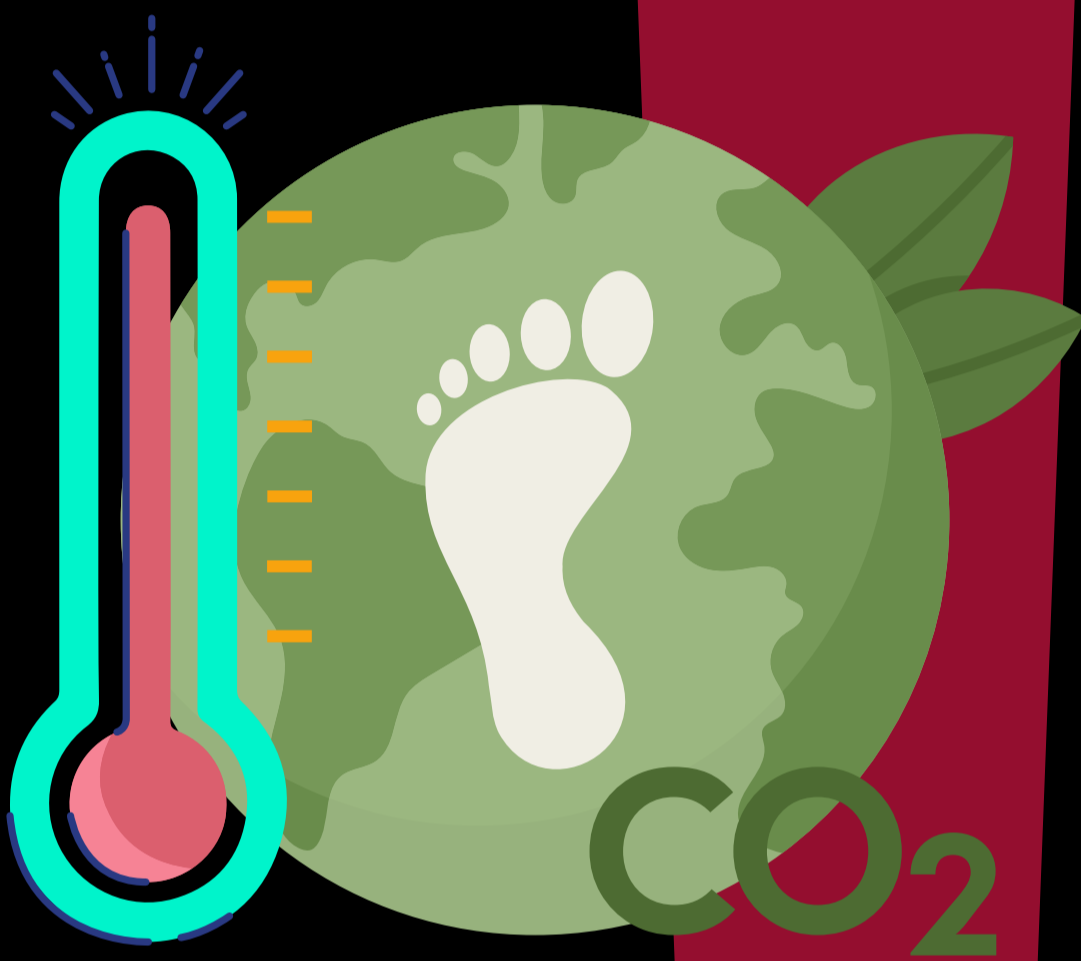
A FUTURE READY PAKISTAN
30.3753° N, 69.3451° E



WHAT ARE FOREVER CHEMICALS?

PFAS, a group of manufactured chemicals commonly used since the 1940s, are called “**forever chemicals**” for a reason. Bacteria can’t eat them; fire can’t incinerate them; and water can’t dilute them. And, if these toxic chemicals are buried, they leach into surrounding soil, becoming a persistent problem for generations to come. |

Source : Northwestern.edu



THE GREENHOUSE EFFECT.

GREENHOUSE GASES (GHG) TRAP HEAT IN THE ATMOSPHERE, MAKING THE PLANET WARMER.

A FUTURE READY PAKISTAN
30.3753° N, 69.3451° E



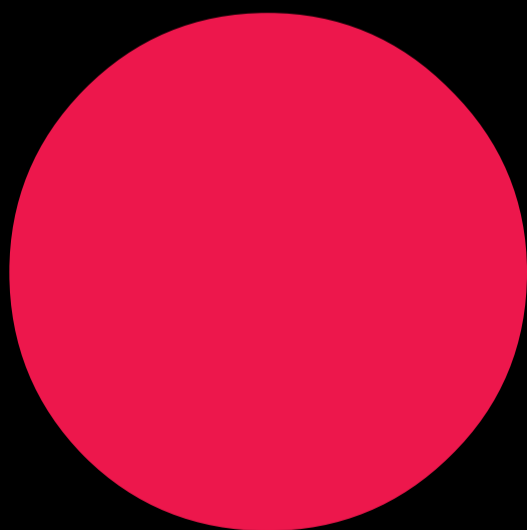
**WHAT IS THE TOTAL
AMOUNT OF GREENHOUSE
GASES YOU, & YOUR
BUSINESS, HOUSEHOLD
OR ORGANISATION
EMITS, BOTH DIRECTLY &
INDIRECTLY?**

**THIS IS YOUR
CARBON
FOOTPRINT.**

**A FUTURE READY PAKISTAN
30.3753° N, 69.3451° E**



**THE PLANET
IS OUR
CUSTOMER.**

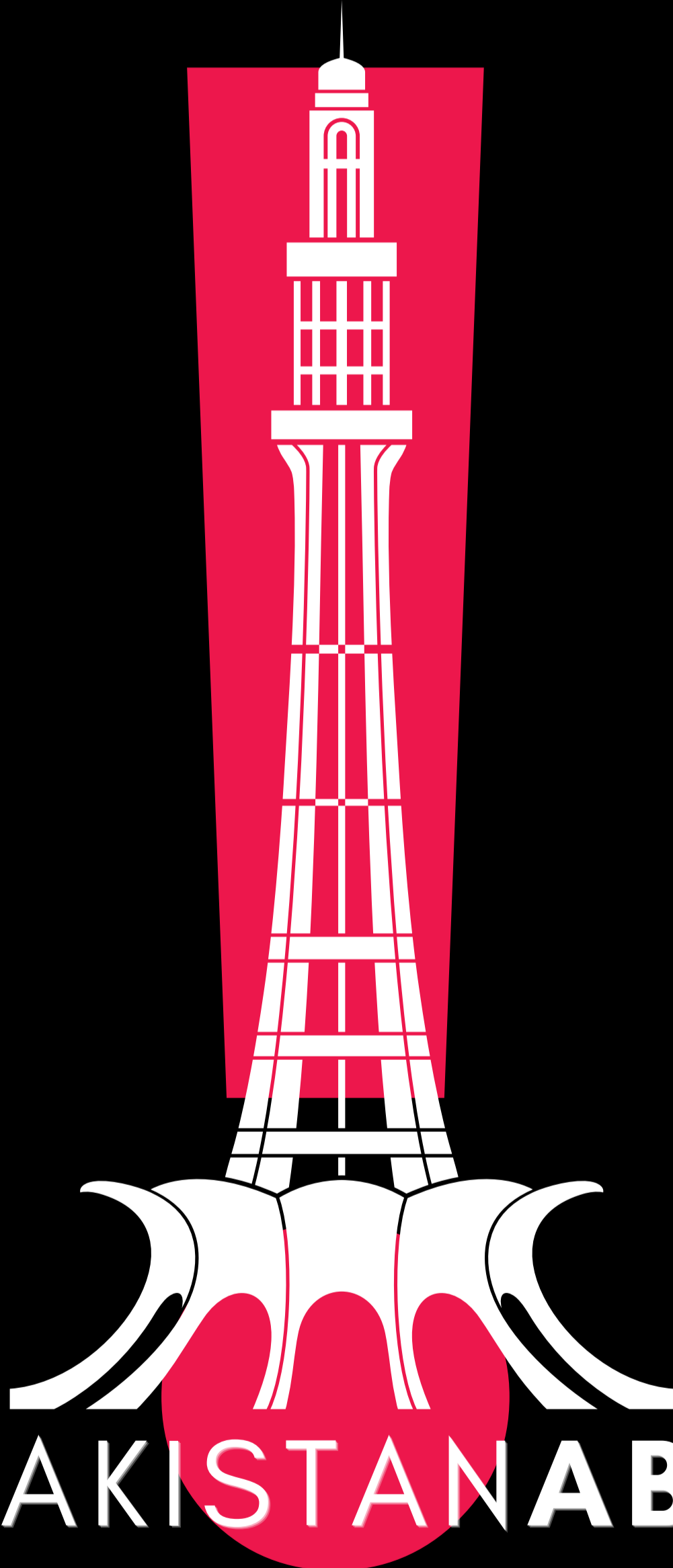


A FUTURE READY PAKISTAN
30.3753° N, 69.3451° E



THIS
IS...HOW WE
CAN HELP
YOU.

A FUTURE READY PAKISTAN
30.3753° N, 69.3451° E



#PAKISTANABHI

A FUTURE READY PAKISTAN
30.3753° N, 69.3451° E