

AAYS Solutions

A fully integrated professional services and project management company with 10 years of industry structural and interior experience.

OUR PRODUCTS & SERVICES

- TROLLEY MANUFACTURER
- INTERIOR & CIVIL WORK
- STRUCTURAL STEEL WORK
- ELECTRICAL WORK
- MEZZANINE FLOOR
- EPOXY FLOORING

AAYS
TECHNOLOGIES
& MANAGEMENT

#55, S V Complex, KR Road,
Basavanagudi, Bengaluru - 560004
080 4127 3460, 9880270087, 9738215900
sales@aaystech.com
gireesh@aaystech.com
gopi.g@aaystech.com



Electrical Works

Our team says, “We are electricians by profession but engineers by knowledge & intelligence.

- With the aid of our technologically advanced production unit, we are able to offer Commercial Electrical Work at economical prices.
- Our specialization also lies in rendering optimum quality electrical work in office, warehouse, commercial place etc.
- Adroit team of professionals working with us keeps a close eye on all the stages of commercial electrical work right from the procurement of the raw materials to the final completion.





before



after

Trolley Manufacturer

Take care of your employees,
they will take care of your business.

- **Suitable of many types of loads:** Trolley can be adapted for ergonomic lifting of boxes, drums, reels, crates and many other common loads.
- **Reduce the risk of accidents:** Just as improved ergonomics will lead to positive long-term health effects, the risk of acute injuries due to accidents is also reduced by using trolley lifting equipment.
- **Protects transported goods:** Many handling frequently results in damages to the goods being lifted and transported, which is both inconvenient and costly. A trolley will securely lift and reduce the risk of damaging the goods.



We manufacture
variety of Trolleys



- Hydraulic Trolley
- Material Handling Trolley
- Platform Trolley
- Heavy Duty Trolley
- Medical Trolley





Before

After

Mezzanine Floor

- **Running out of space?**
 - Create space within space
- **Increase storage space:** If you have a lot of shipping and receiving activity, and adequate storage space is crucial, right? What if you can create more storage space within your existing space?
- **Cost-effective option:** It is the cheapest option. Adding an extension or moving to a new location is expensive.
- **Flexible design:** Mezzanine floors are not restrictive by nature and can be easily dismantled, relocated when needed. If your warehouse is 9m tall, you can opt for a mezzanine floor! These floors can be used as storage platforms and adjusted resized to suit any workspace be it office, retail space, showrooms and maintenance working areas.

“AAYS Technologies has set benchmark in giving Structural Steel Works.

To Complete your requirements, our firm selected a professional's team who complete this service within stipulated time frame.



Interior & Civil Works

- **Looking at increasing workstations due to headcount expansion?** Moving to a bigger office space is not the only solution.
- **Increase Team Productivity:** Studies have shown that noise, light, temperature, furniture layout and quality are important factors that influence employee productivity.
- **Inspiring Clients & Visitors:** Creating a breathtaking immersive experience for your clients and customers cannot be done without a well-planned office interior. For your clients, its like a first date with your company. And the first-impression can always make or break things for your organization.



RECEPTION
AREA



CAFETERIA

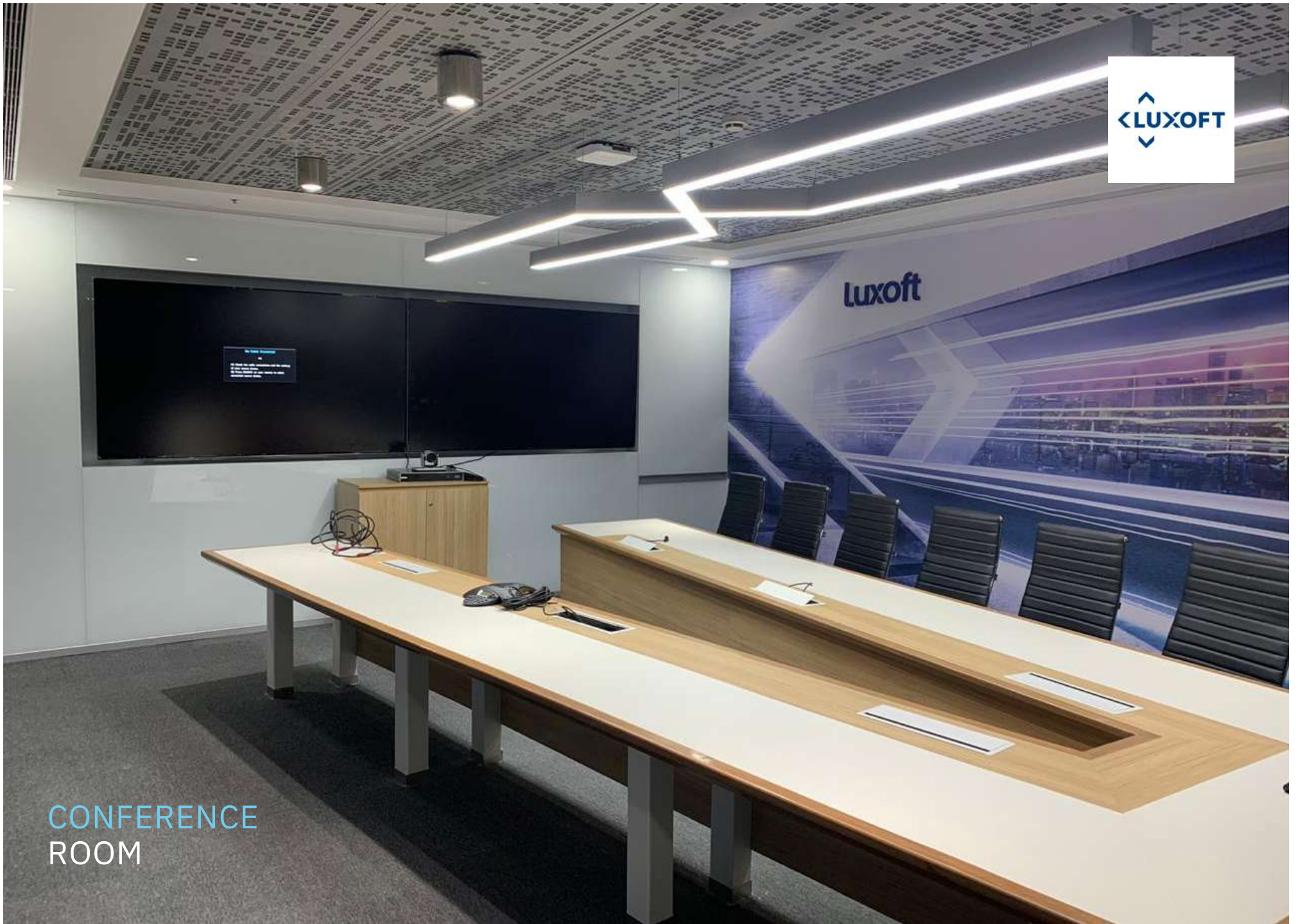




WORKSTATION
AREA



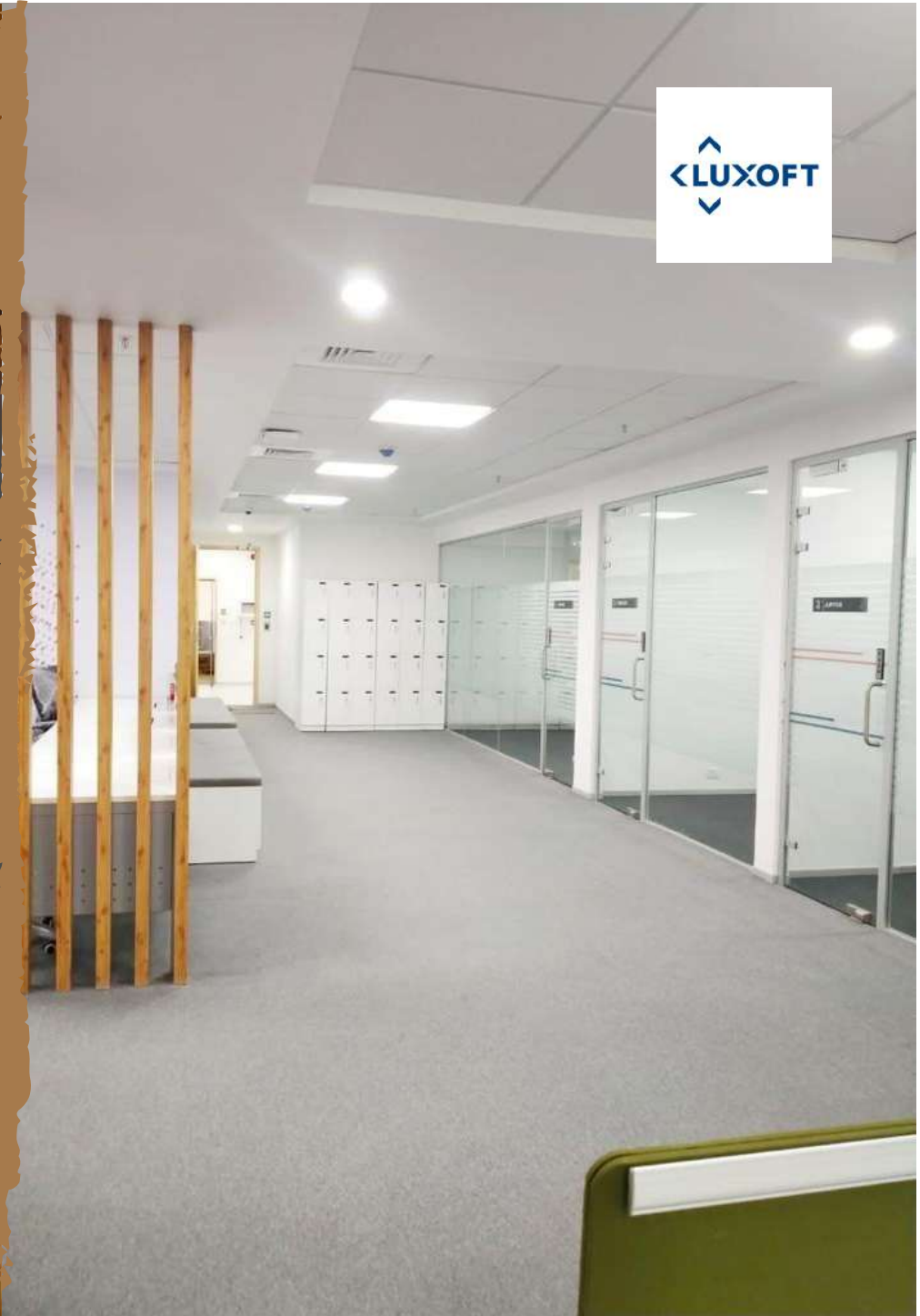
WORKSTATION
AREA



CONFERENCE
ROOM

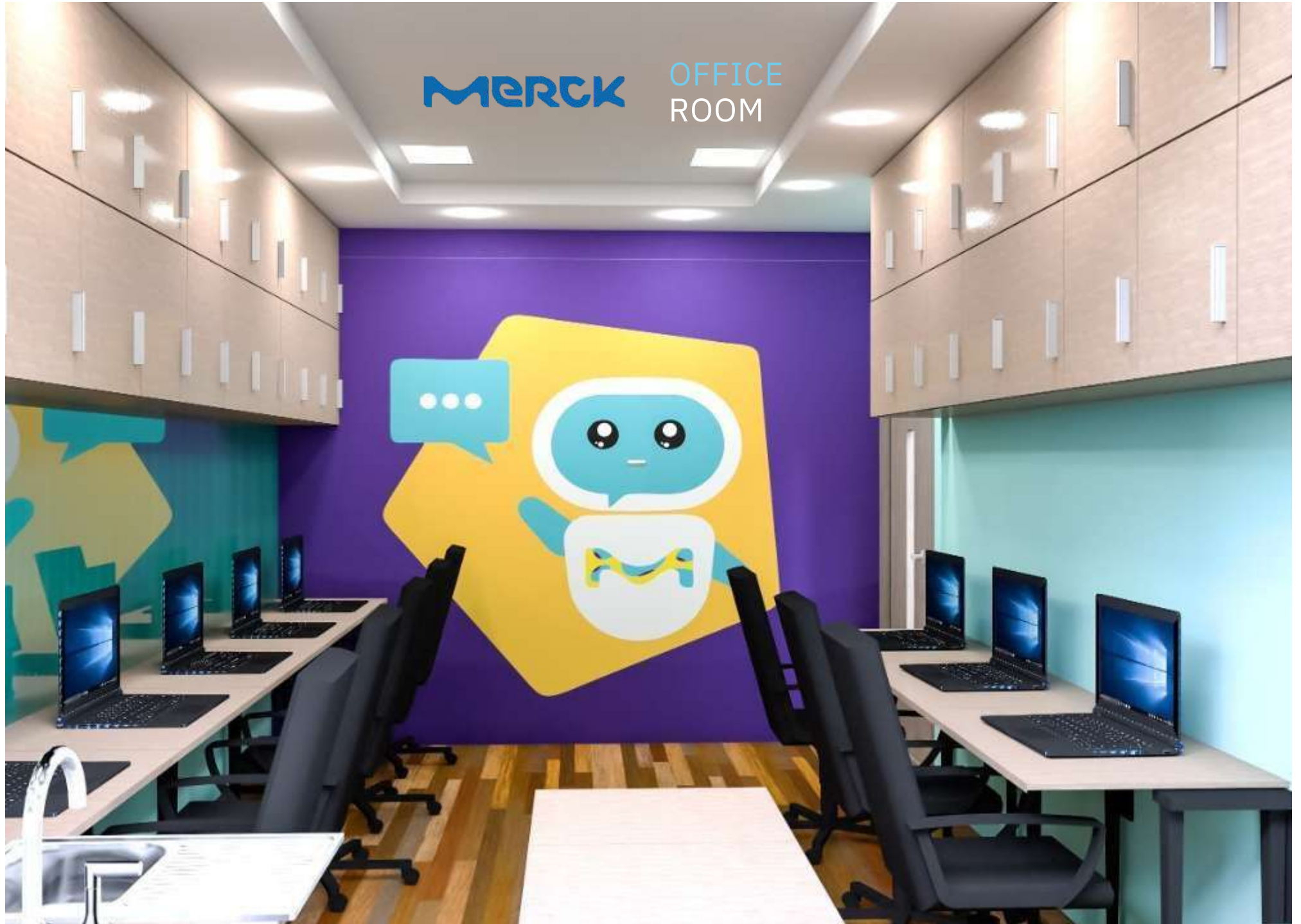


RECEPTION



MERCK

OFFICE
ROOM





CAFETERIA

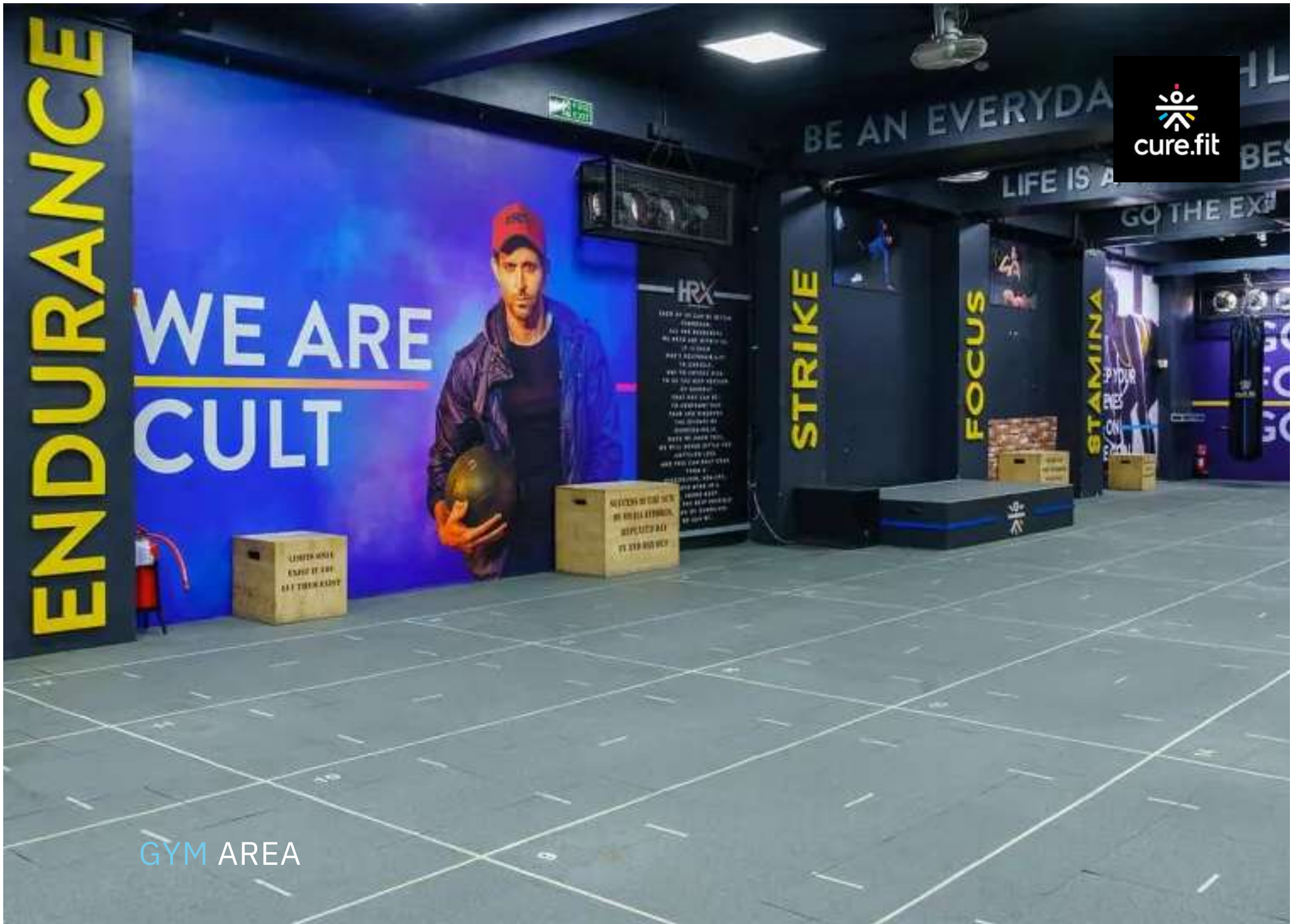




GYM AREA



GYM AREA

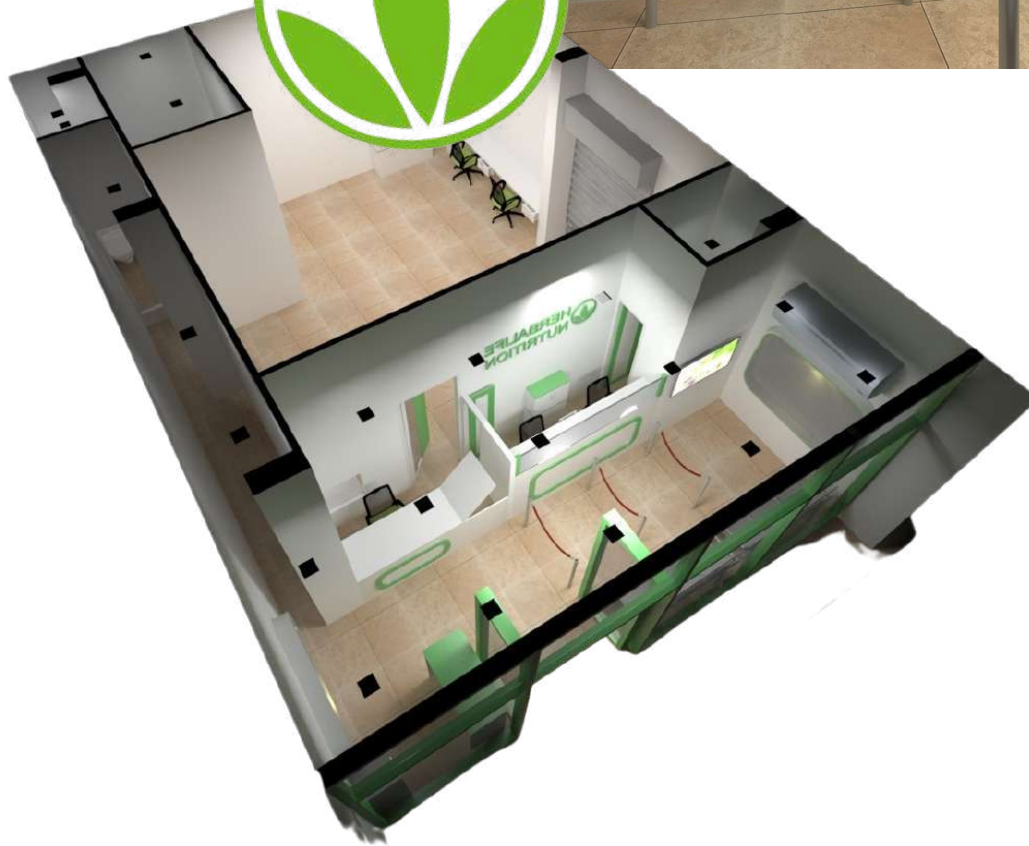


GYM AREA



INTERIOR RETAIL

HERBALIFE
MYSORE
CENTER



PROJECT OVERVIEW

CLIENT: HERBALIFE

FORM OF CONTRACT: Design & Build **TOTAL AREA:** 816 SFT

WAREHOUSE AREA: 417 SFT

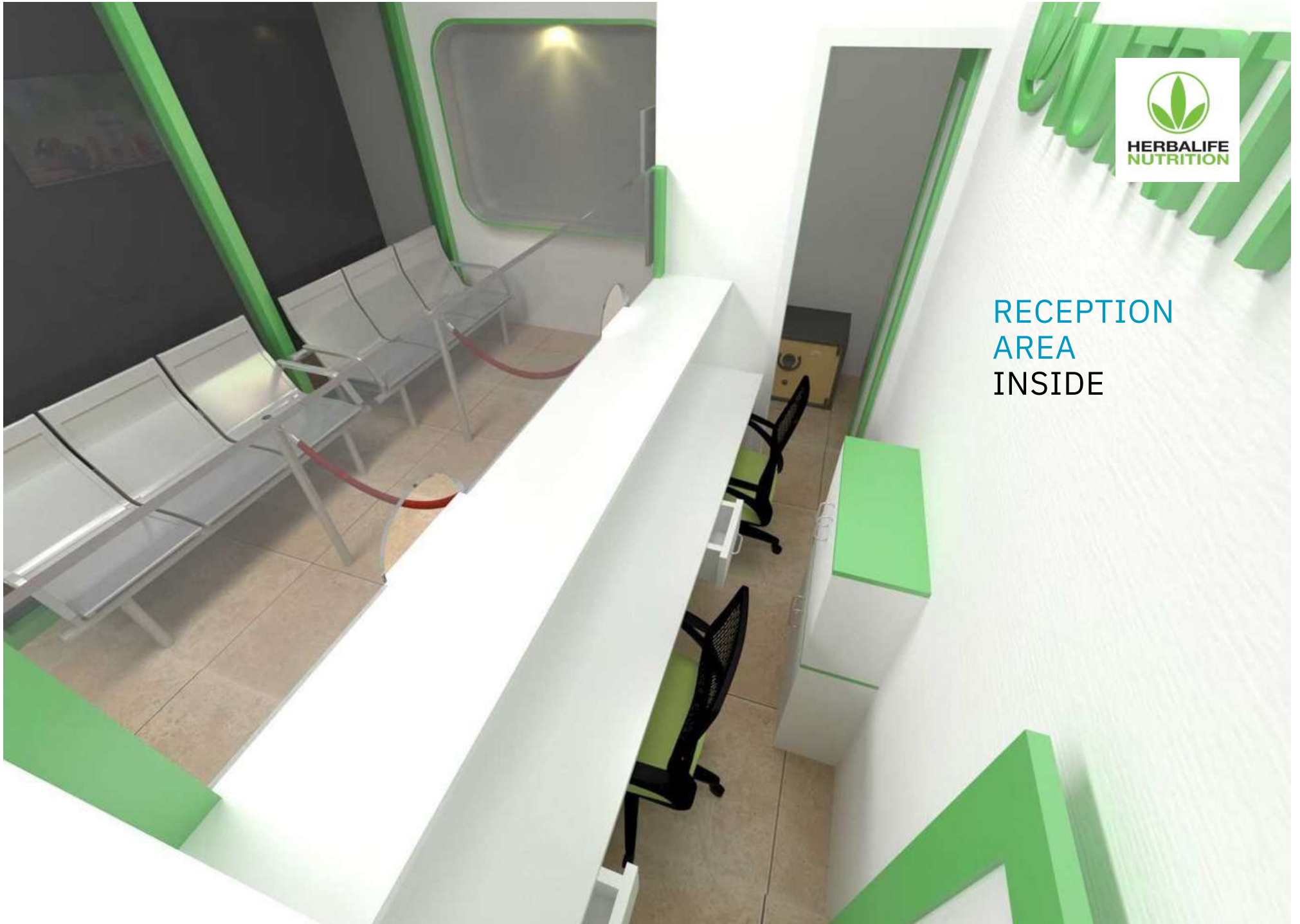
RECEPTION AREA: 266 SFT

- **WATER CLOSETS:** 1 NOS
- **PANTRY:** 1 NOS
- **HAND WASH BASINS:** 2 NOS
- **BACKEND OFFICE SEATING:** 2 NOS
- **LOCKERS:** 1 NOS
- **SAFE LOCKER ROOM:** 1NOS
- **ORDER COUNTERS:** 2 NOS
- **DELIVERY COUNTER:** 1 NOS
- **SECURITY TABLE:** 1 NOS
- **WATER DISPENSERS:** 2 NOS
- **AIRPORT CHAIRS 3 SEATING'S:** 2 NOS
- **DISPLAY UNITS:** 2 NOS
- **TV'S:** 1 NOS
- **STORAGES:** 2 NOS
-

RECEPTION
AREA

HERBALIFE
NUTRITION



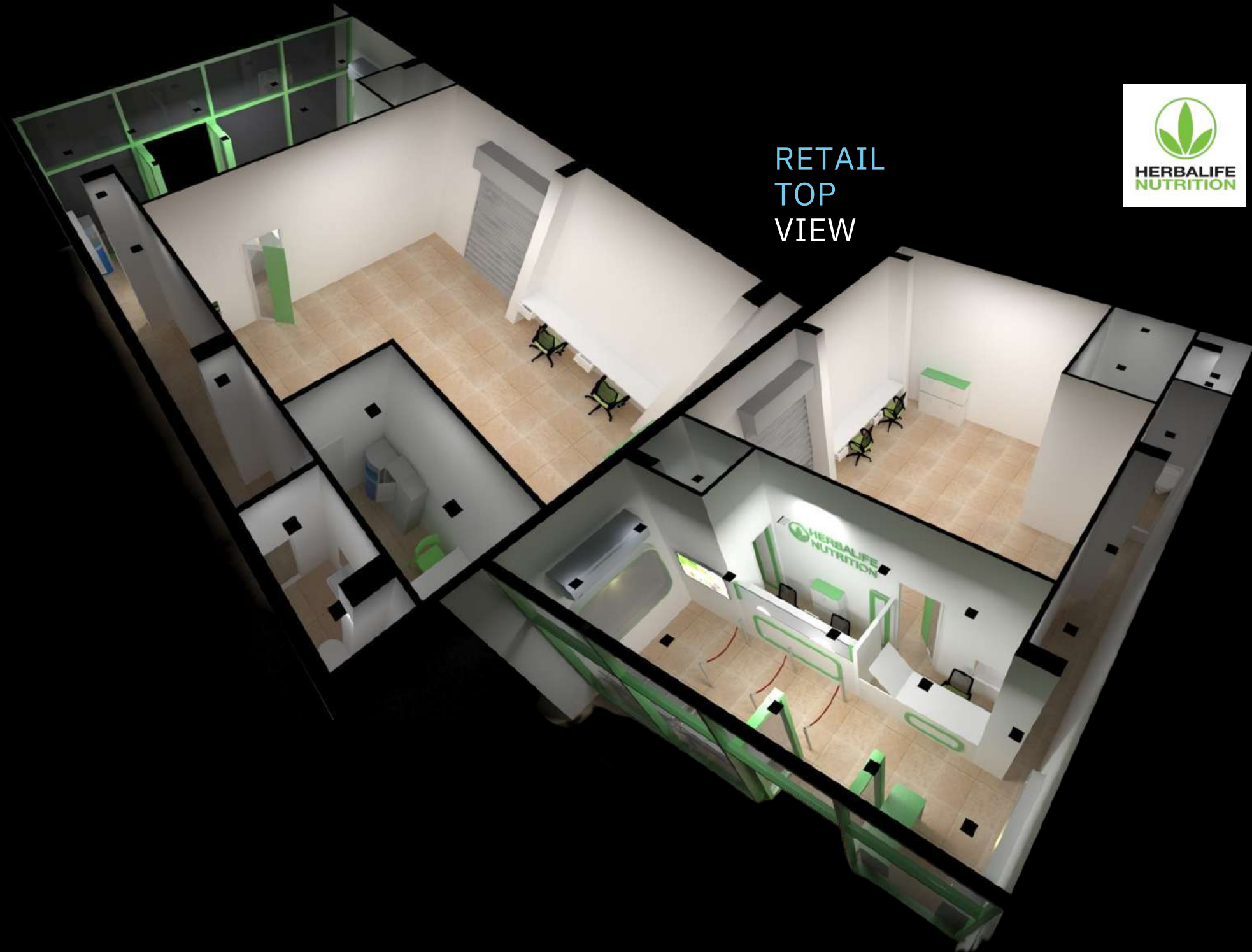


RECEPTION
AREA
INSIDE



PANTRY





RETAIL
TOP
VIEW



WAREHOUSE INTERIOR



WAREHOUSE
OFFICE
AREA







OFFICE
ROOM





SECURITY ROOM



STAIRCASE
FOR
WAREHOUSE





CAFETERIA



ALUMINIUM PARTITION

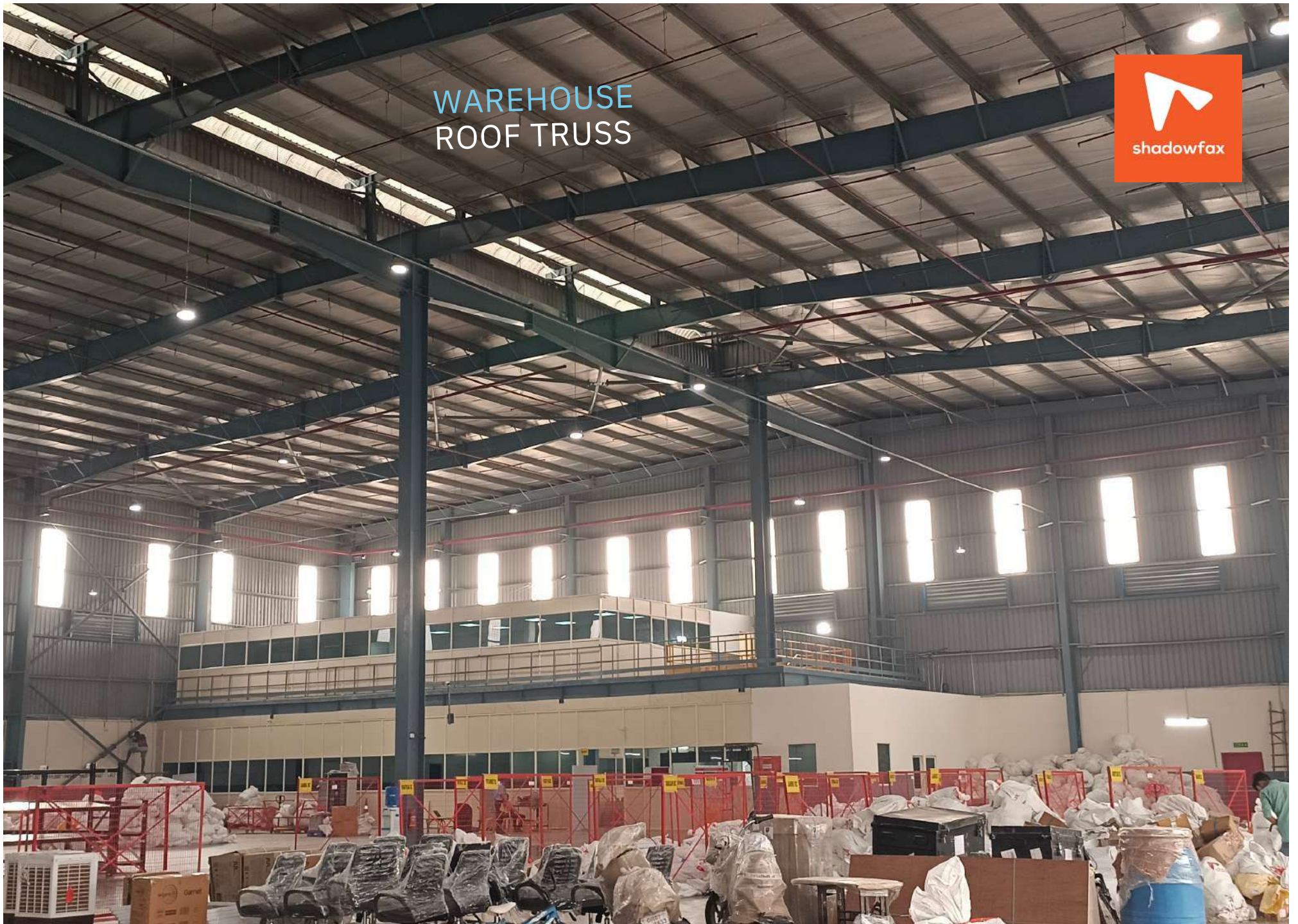
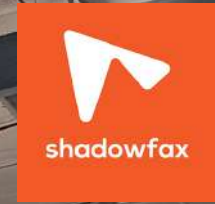




STORE
ROOM



WAREHOUSE ROOF TRUSS



Epoxy Flooring

Our range of epoxy floorings have been widely accepted in almost all verticals of the industry.

- **Resistant to stains and water:** Epoxy flooring holds up well against stains and water. Unlike wood, laminate or other types of flooring, epoxy does not warp or water stain as a result of water damage.
- **Safety:** The number one priority of any company should be safety. An anti-slip coating can be installed so there is no need to worry about slips and accidents with epoxy floors.
- **Easy maintenance:** Epoxy flooring is one of the easiest types of floors to maintain. It does not chip or crack & is nonporous and it will last years.



Thank you so much for your business. We are honored to have clients like you.



LinkedIn

[linkedin.com/company/aaystech](https://www.linkedin.com/company/aaystech)



Twitter

[@aaystech](https://twitter.com/aaystech)



Email

sales@aaystech.com,
gireesh@aaystech.com,
gopi.g@aaystech.com



Phone

[9880270087](tel:9880270087), [9738215900](tel:9738215900),
[080 4127 3460](tel:08041273460)



BOSCH



KONGSBERG



eurofins



TOYOTA



shadowfax



HERBALIFE
NUTRITION



SHIVA



SONY

MEDIATEK

Itron

