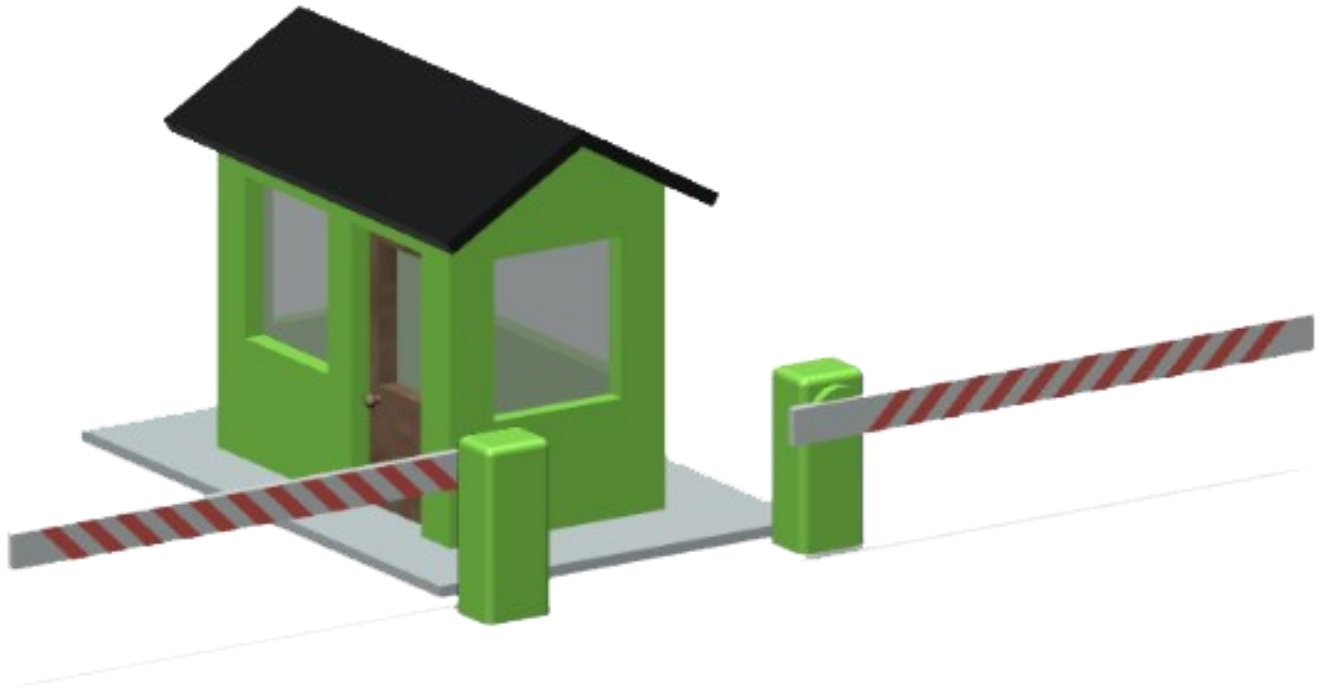
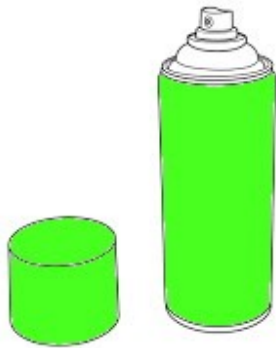


# How to Finish A Guard Shack



# How to Finish A Guard Shack

## Suggested Tools & Materials



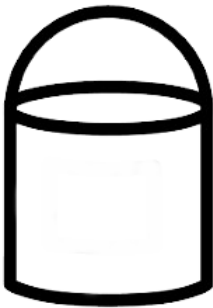
**Spray Paint**  
Color of Choice



**Testor's**  
**Model Glue**



**Jewelry Side-Cutters**



**Latex Paint**  
Brown, Black,  
and/or Dark Gray



**Small Brush**



**White Glue**



**Scissors**



**Window Tint**

# How to Finish A Guard Shack

## Suggested Tools & Materials

### Options



**Fine Gray  
Track Ballast**



**Eye Dropper &  
Bottle**



**Woodland Scenics  
Glue**

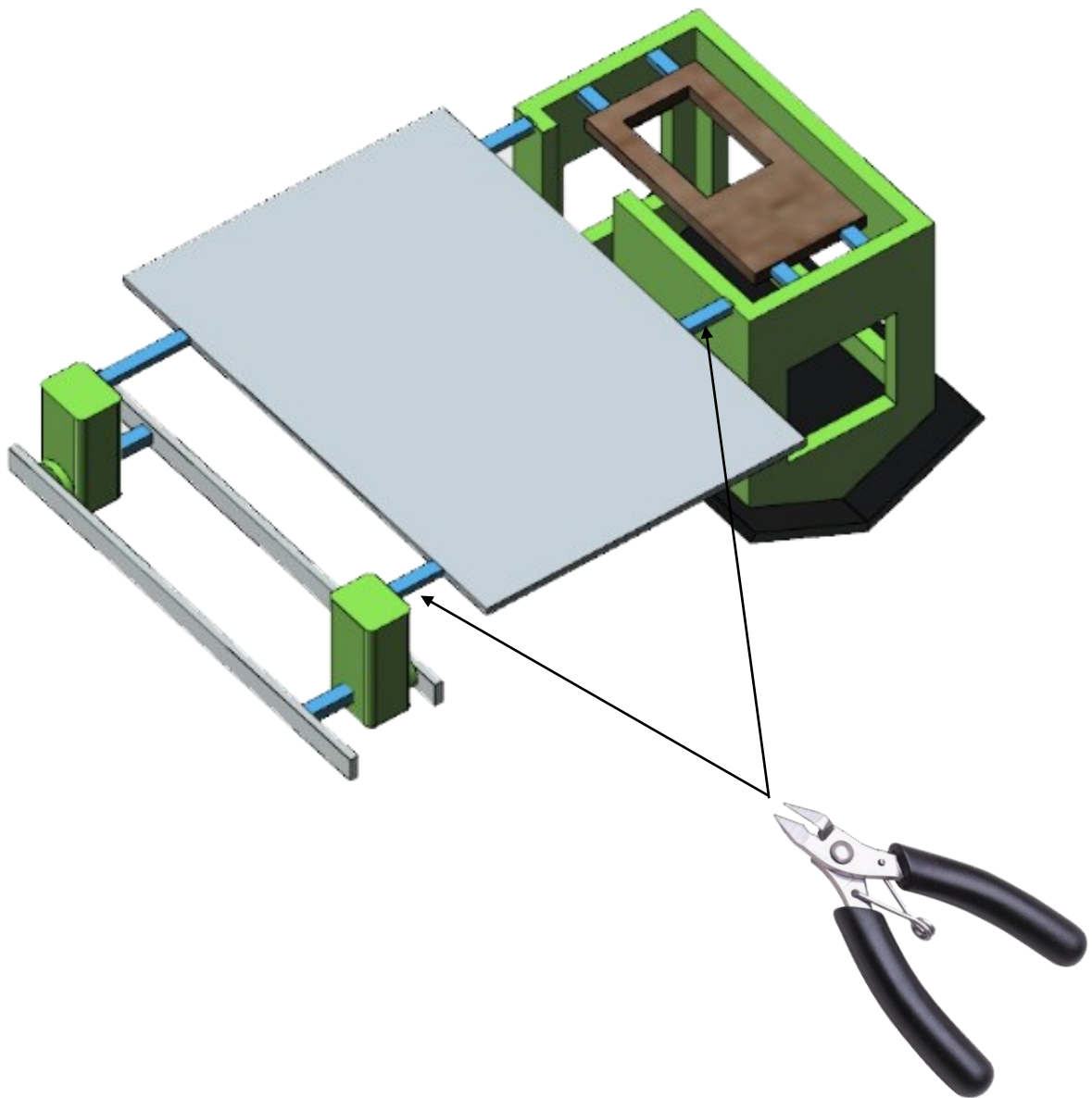


**Woodland Scenics  
Cement**



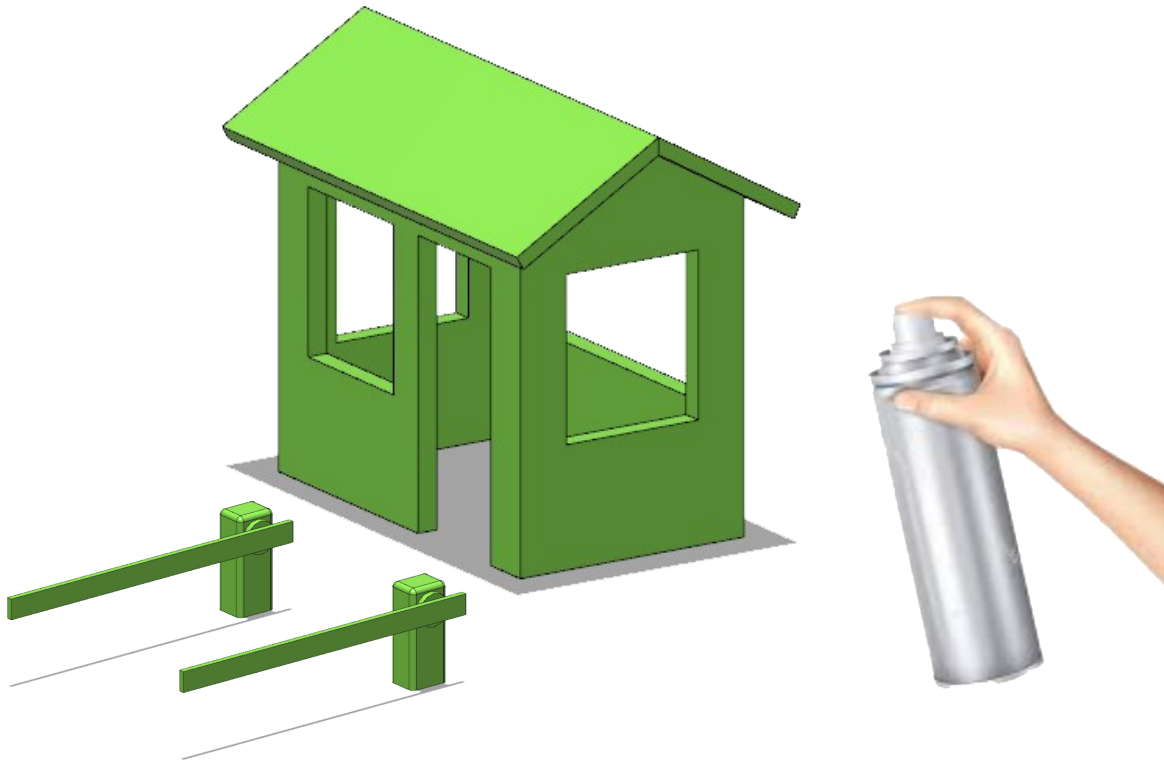
**Plastic Spoon**

# How to Finish A Guard Shack

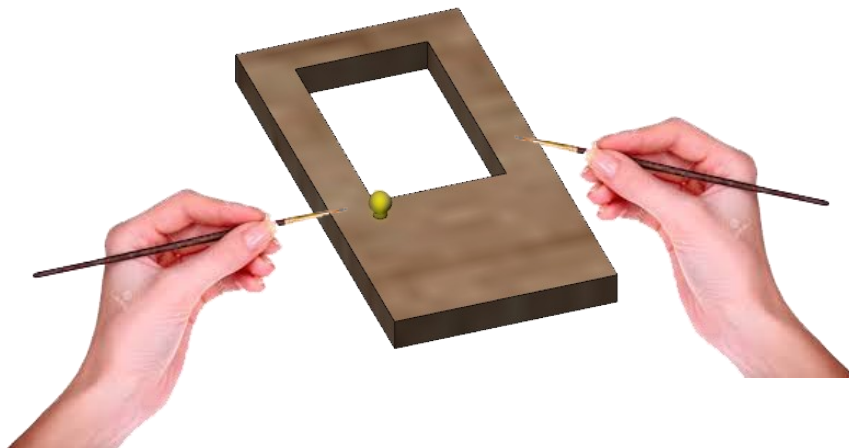


- The assembly parts are joined by “sprues,” shown in blue in the above figure. Sprues are to make the model integral, similar to injection molded models. Cut away all sprues and discard. Use a fingernail file to remove any leftover burs.

# How to Finish A Guard Shack



- **Paint the entire building and boom barrier assembly the color of choice.**

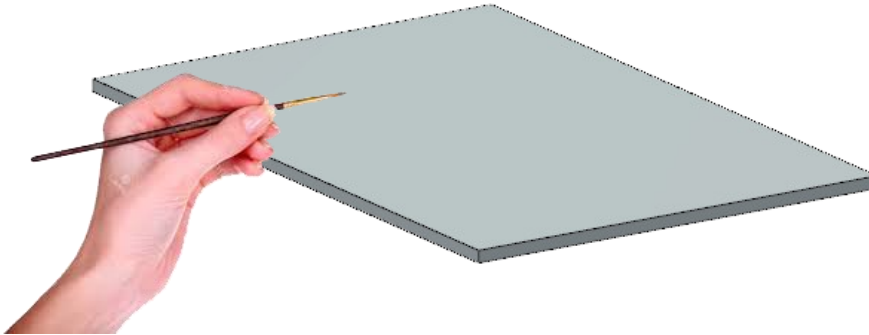


- **Paint door brown and the handle a brass or silver color.**

# How to Finish A Guard Shack



- **Paint the roof black or dark gray.**



- **Paint the foundation light gray.**

# How to Finish A Guard Shack

## Optional Finishing Steps

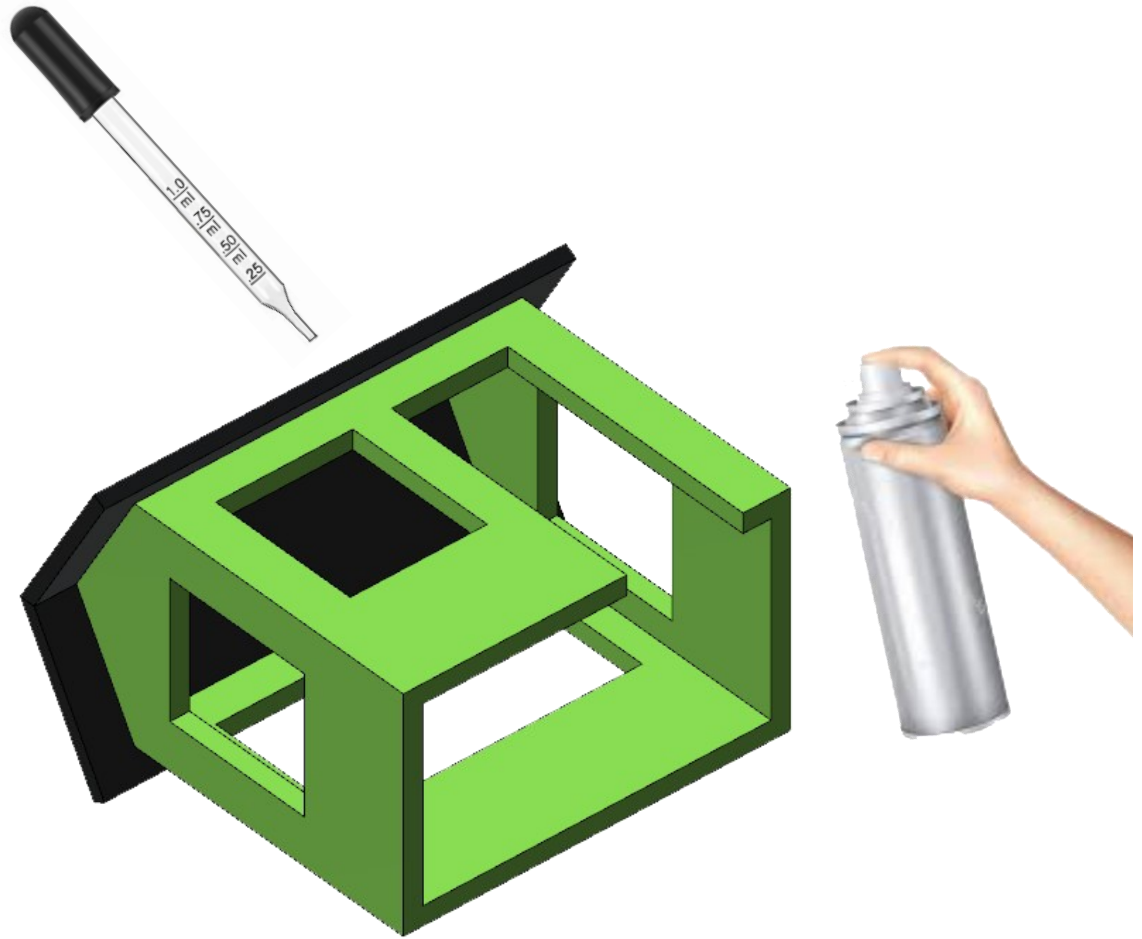
The building will look great with just a coat of paint. However, you can opt to put a stucco texture on the building. Depends on how much importance is placed (and/or time and expense.)



- Use a small brush to apply a liberal coating of Woodland Scenics Glue on an outside building wall. Then, sprinkle a liberal coat of fine track ballast over the glue.
- Tap off the excess ballast into a waste can or container and set aside to dry. Do this to each building side.

# How to Finish A Guard Shack

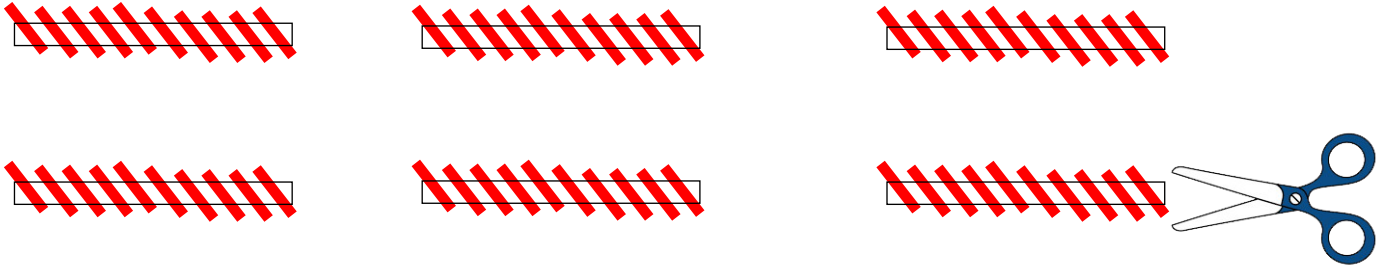
## Optional Finishing Steps (con't)



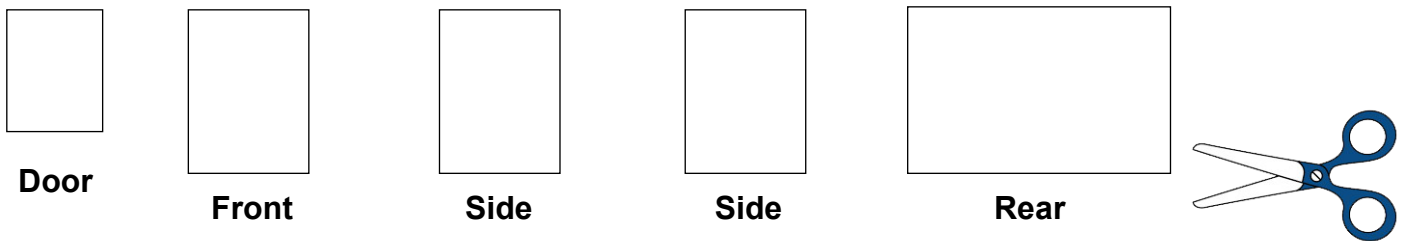
- Use an eye dropper to drip on a liberal coating of Woodland Scenics Cement. Be sure to add a drop of liquid dishwashing soap to the glue before starting. The soap will help to reduce any surface tension of the solution. I have found Woodland Cement will paint-over easily. Let dry well.
- Paint the entire building with the color of choice. Let dry well and repaint the roof as shown on page 6.



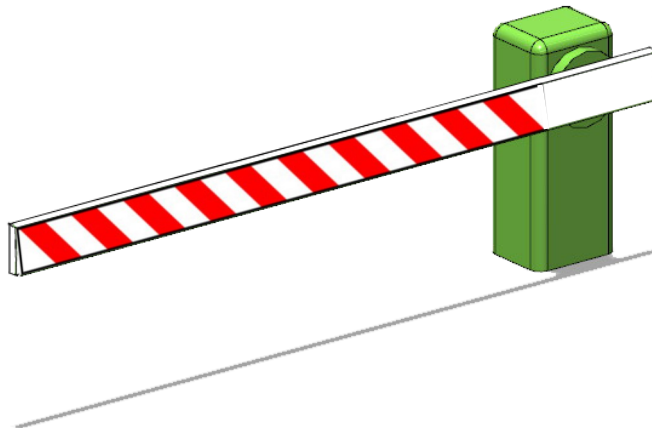
# How to Finish A Guard Shack



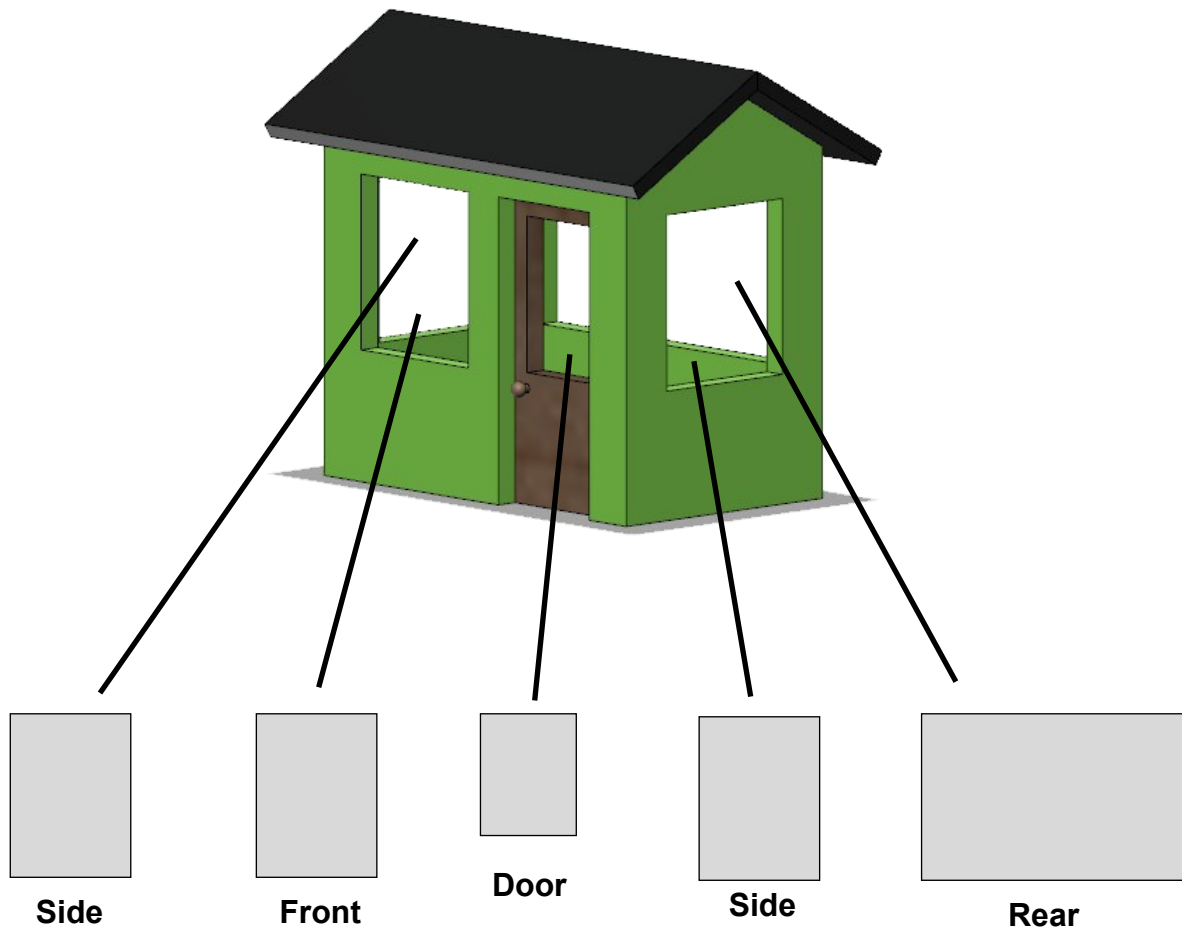
## Window Templates



- Print this page on glossy photo paper and cut out each boom barrier marking along the black outline.
- Cut out each window template and set aside to use in a later step.
- Use White glue to adhere the stripes on both sides of each boom barrier as shown, below.



# How to Finish A Guard Shack



## Windows

- Use the window templates you cut out on page-9 to cut out the windows from window tinting.
- Glue the window on the door, let dry and glue the door into place on the inside of the door opening.
- Fit each window in it's position on the inside of the building and tack into place using tester's model glue. Place a drop of glue along the window edges and let it capillary attract slightly under the edges.

# How to Finish A Guard Shack



**Apply a moderate amount of white or Testor's glue to the bottom of the building and place it in the middle of the slab.**

# How to Finish A Guard Shack Sample Diorama

