

Crime scene photos pertaining to David Thorne's wrongful conviction case



Blood on the arm of the couch where the victim had been sitting. Joe Wilkes testified that he reached around her while seated beside her and cut her. Her left internal and external carotid arteries and jugular were severed. Her trachea was partially severed. This staining is on the wrong side of her body. It is physically impossible for him to have reached around her to the point of entry while in a seated position.



The 'void' pattern where the victim was standing with the killer behind her when he cut her. As her heart beat blood hit the doors.



The dining room chairs are pulled out from the table as if two people are sitting and talking. There is a glass of melted ice in front of one chair along with the victim's cigarettes.



The cigarette lighter is placed in the middle of the table as if two people are sharing it. The ashtray would ultimately be located on the arm of the couch. Presumably someone moved it to sit there.



The deck George Hale looked toward when he heard puppies crying as he walked down the sidewalk on the morning of April 1st. He saw a man, 5'9", approximately 180 pounds, dark medium length hair wearing blue jeans and a t-shirt and carrying a half-full black garbage bag out the door.



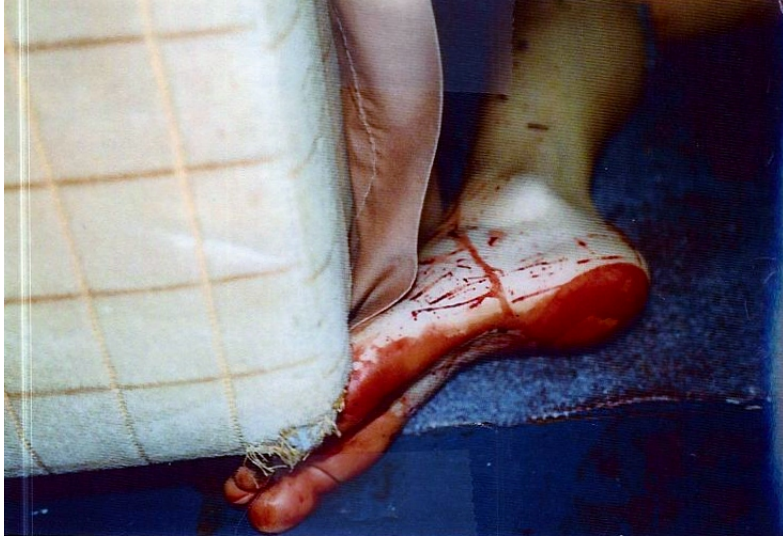
The puppies George Hale heard crying.



The smear in the blood made by the victim's left foot as she was being assisted away from the door.



The smear in the blood made by the attacker as he assisted the victim away from the door.



Blood staining on the victim's left foot that she made as she took her last step and slid through her own blood on the floor in front of her.



This foot flipped upside down and dragged through the blood as the victim's own blood dripped from the person of the killer onto the bottom of her foot.



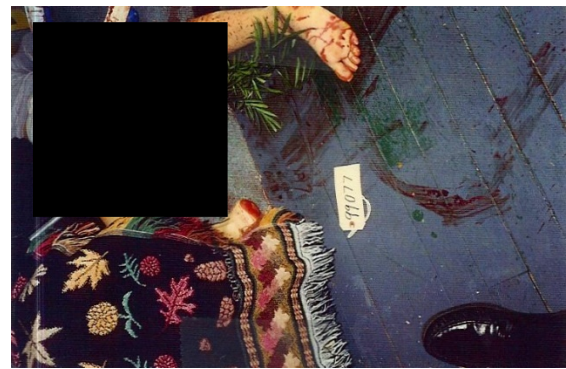
A bloody footprint. An unknown baby in a photo positioned between the victim's legs.



The policeman's foot making the footprint.



Policemen without protective gear contaminating the crime scene.





Knife swipes on the pillow case from the murder weapon.



Placement of the pillow case. Bloody transfer from the killer's pant legs on the front skirt of the couch and the floor in front of the couch.



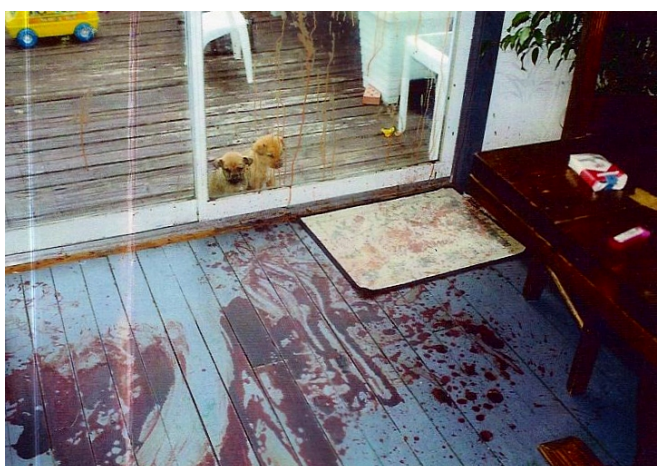
Detectives removed the pillow with the knife swipes from the couch and placed it in the bloody dining room in a bloody chair.



Prosecution's theory of where the fatal injury occurred.



Blood spatter on the couch where Joe was reportedly sitting.



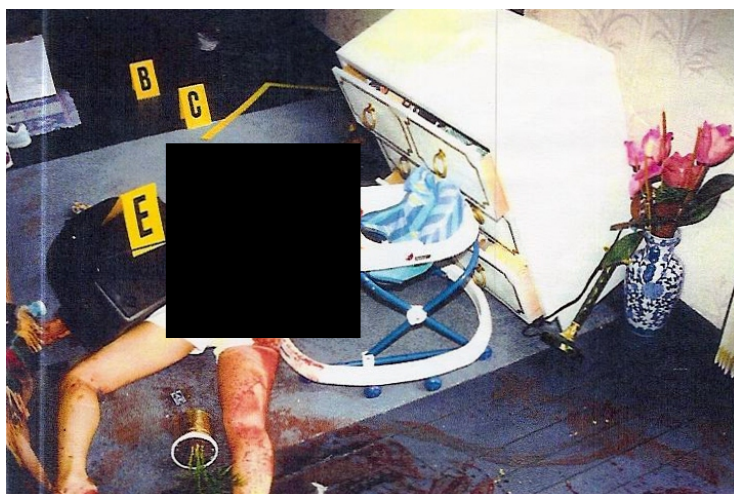
Where the fatal injury was inflicted. The dining room photos were not shown to the jury.



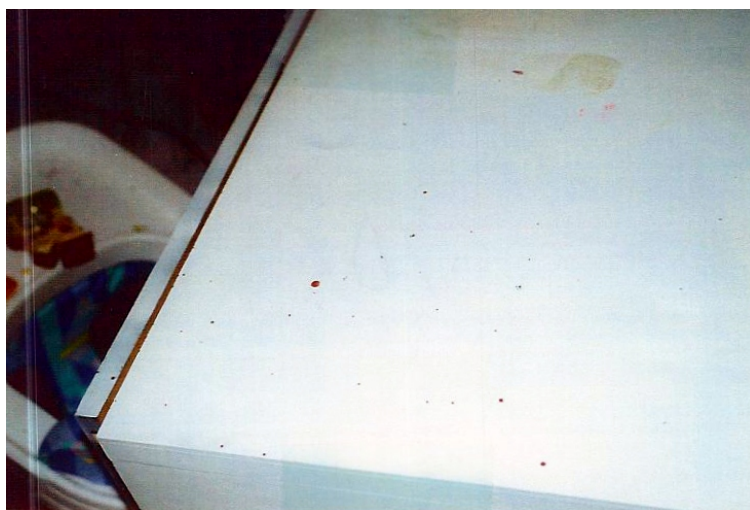
Ashtray containing two different cigarette types found on the arm of the couch in the living room. Collected and typed. Found to contain amylase (a component in saliva).



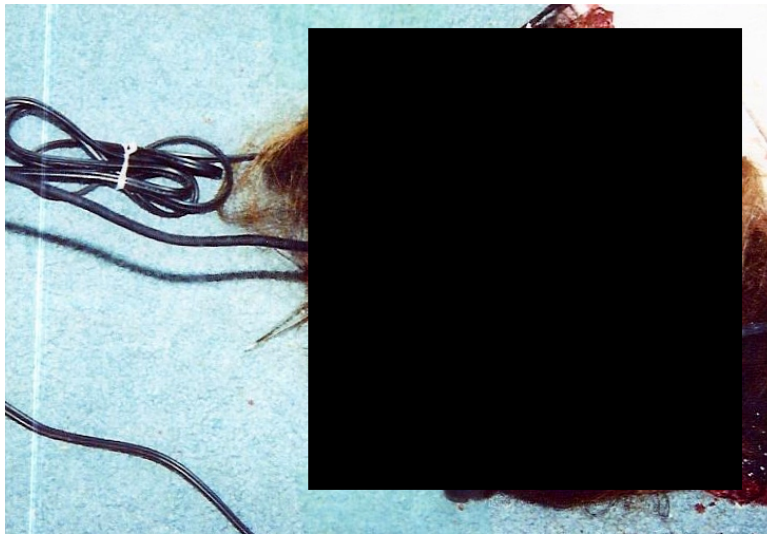
Ashtray previously containing two different cigarette types. Collected from the railing beside the victims bed. Collected and reported by Detective Bud Sampson. These cigarette butts never made it to the lab.



The scene was staged. The chest was pulled forward and the drawer was pulled out to prop the dresser on the baby walker to keep it from falling all the way down. Joe testified that he bumped into it from the side near the flowers to cause it to tip over. It wouldn't have tipped forward this way after being hit from the side and there are no shoe marks correlating with that scenario. There would also be no reason for him to exit the seated position on the couch, cross over the body and debris, just to exit by hitting the chest of drawers and stepping over the baby walker. The TV would not have landed her or in this position. It would have had to spin mid-air to land this way.

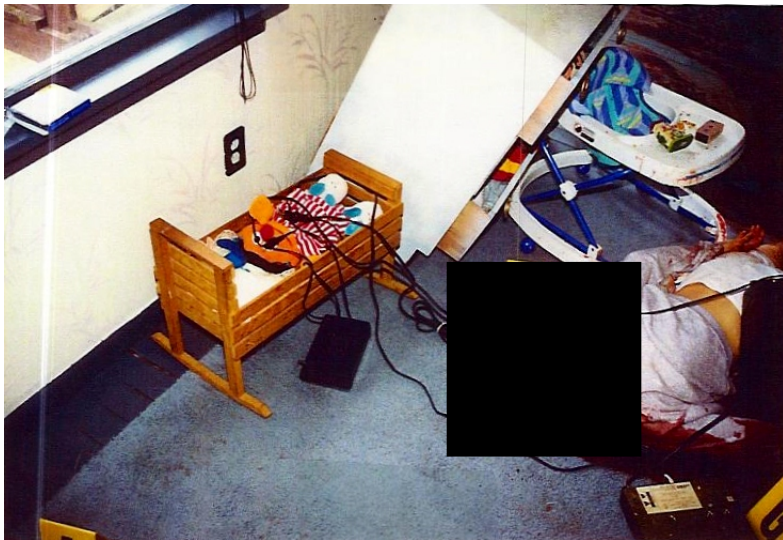


The chest of drawers was pulled forward sometime after the blood dried. The blood drops remained cylindrical instead of running downward as they would have in this position if the blood had been wet.

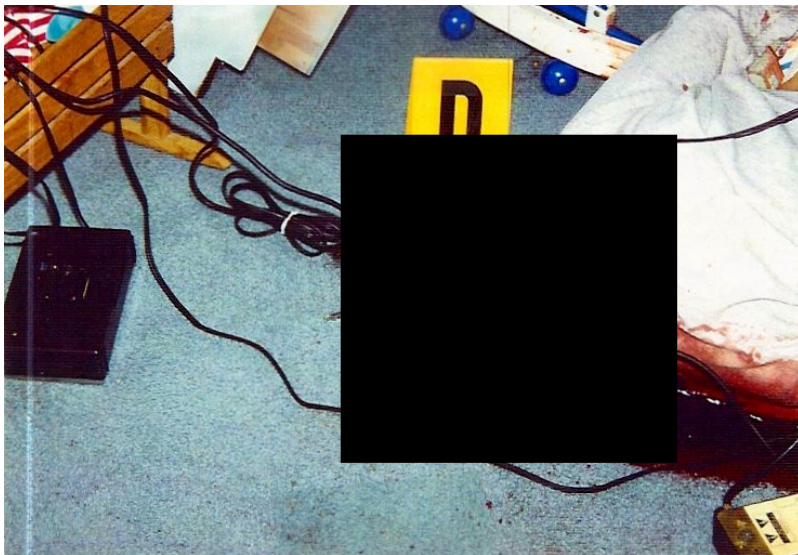


The victim's hair was pulled forward to cover her face after the cords had been placed over her.





Instead of ripping from the outlet when objects fell from the chest of drawers, the cords were placed underneath the outlet.





The killer ran toward the stairs, leaving bloody footprints. Reaching point "A", they turned left and sprayed droplets of blood as they ran the width of the room and entered back into the living room.



Bloody footprint cut out of floor with a circular saw.



Store clerk holding up shoe they felt most closely matched the bloody footprint. No footwear expert was called.



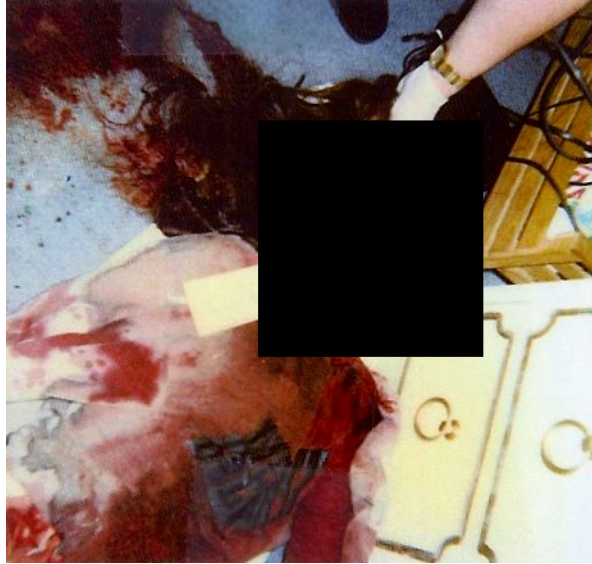
Knife swipes on pillow from right end of couch nearest the stairs.



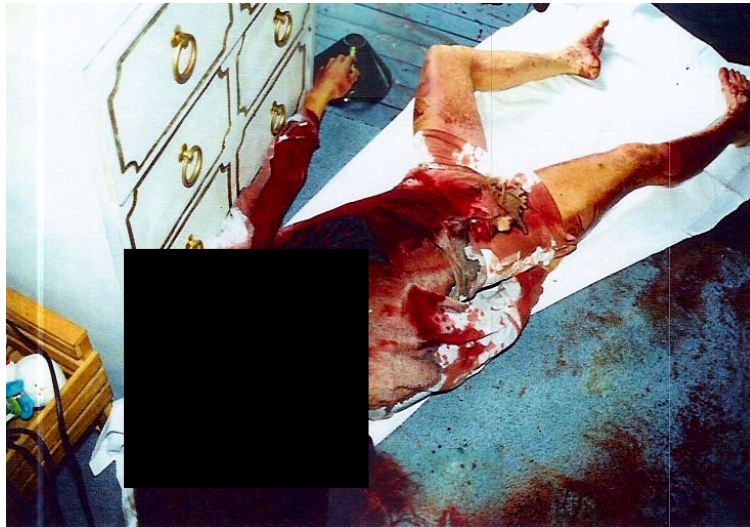
Kitchen knife with fingerprint.



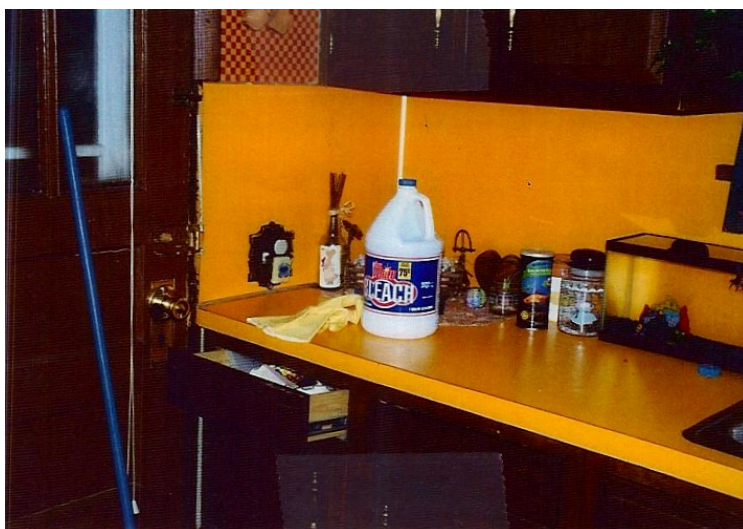
Shrade ('Joe's knife').



Holding the victim up by her hair to take a photo of her injury.



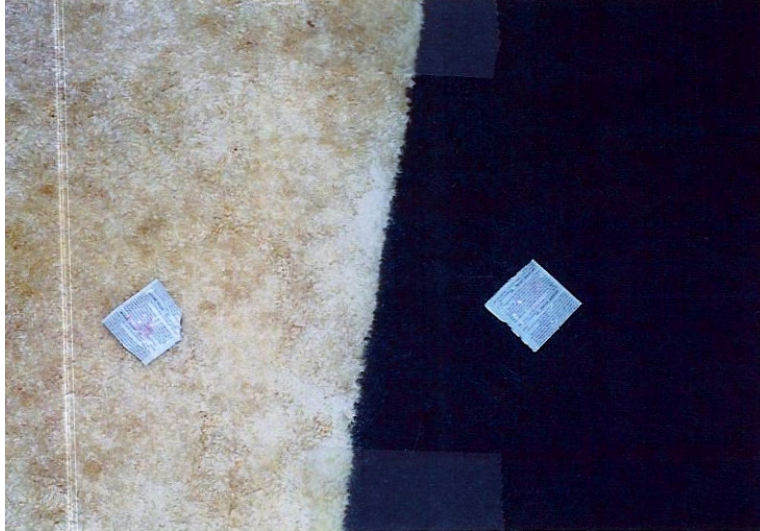
The victim was turned over and propped against the chest of drawers and is hanging off of the sheet. Her body is unprotected from contamination.



Bleach. Destroys biological evidence. Only two fingerprints were found in the scene, both the victim's and both on soda cans in the trash.



Fred Cameron's video camera and video cassettes. He was reportedly setting them up there to catch Yvonne's dad "messing with" her boys. The camera was returned. The police said they don't know what happened to the video cassettes.



Condoms were found thrown around the victim's floor in the bedroom. One, collected by vacationing detective John Leech, was found without a condom. That's the only piece of evidence he collected.



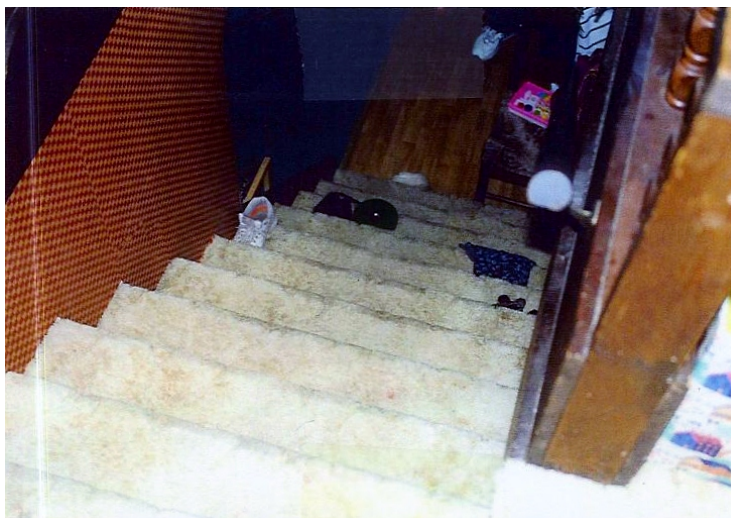
Victim's 'slightly worn' underwear. She was not wearing any underwear when the body was found.



Unexplained abrasions from time of death.



Bruise from "at or near" the time of death.



Hand railing from victim's bedroom stairs. Possibly the cause of the bruise on the victim's thigh.



Two sets of knives from the victim's kitchen. The one on the left is missing the butcher knife.



The butcher knife. Found five blocks from the victim's home the day after the crime was discovered. Has a clear fingerprint. This knife was found by Paula Gonzalez; whose husband Ramon is a career felon. He was incarcerated at the time of the crime. Detective Bill Mucklo was involved in his case.



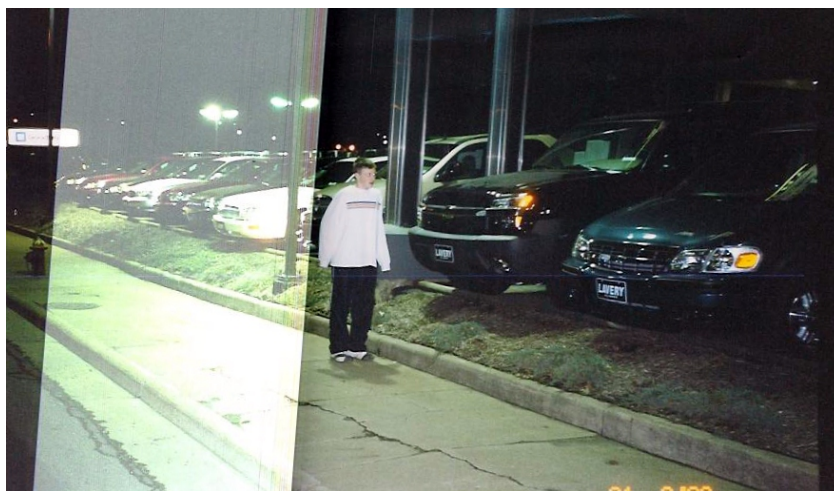
Pittsburg Steelers sweatshirt found in the trunk of David's car and taken by search warrant.



The Pittsburg Steeler's sweatshirt became a Harley Davidson sweatshirt before it made it to the lab. It had human blood on it. It was not the victim's.



My son wearing similar clothes to what Joe wore that night. This is the same night of the year, same time of day, same route.





The cans neighbor Dana Alexander saw the victim “playing with” at approximately 5:30 PM on the night she died. Dana described a man later determined to be James “Jim” Jordan standing with the victim at that time.



The dogs James “Jim” Jordan said he was asking the victim about while she was in front of her door playing with the cans. Also the point of the fatal injury approximately 1 ½ hours later.