

WHAT ARE AQUATIC INVASIVE SPECIES?

Aquatic invasive species (AIS) are non-native plants, animals and diseases that do not naturally occur in our waters and may cause harm to the environment, the economy, human health, or natural resources. Some AIS of concern are:



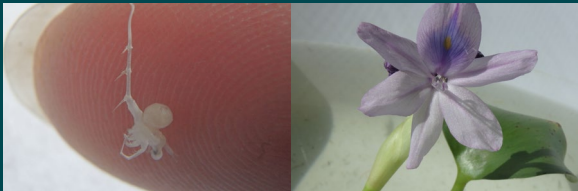
Zebra Mussel

Starry Stonewort



Red Swamp Crayfish

Eurasian Watermilfoil



Spiny Waterflea

Water Hyacinth

HOW DO AIS HARM MINNESOTA WATERS?

Lakes, rivers and wetlands are central to Minnesota's identity and overall quality of life. AIS can change how residents and visitors use and enjoy Minnesota waters by harming:

- **The Environment.** Some AIS outcompete native plants, fish and wildlife for resources and habitat. AIS may reduce available food, shelter or habitat for native species.
- **Recreation.** AIS may compete with game fish for resources and habitat. Invasive plants can form dense mats that interfere with boating and other water recreation.
- **The Economy.** AIS cost millions of dollars annually to manage and millions more in lost revenue for businesses, natural resources and recreation.

HOW DO I GET MORE INFORMATION?

Learn More: Visit the DNR's website for detailed information about prevention actions, species, laws, contacts, resources, and more.



mndnr.gov/AIS

Contact Us: You can reach a conservation officer to report a potential violation, contact an AIS expert, or get more information by contacting the DNR Information Center at 888-MINNDNR or 651-296-6157 or email info.dnr@state.mn.us.

HOW DO I REPORT FINDING AN AQUATIC INVASIVE SPECIES?

A new occurrence of an AIS in a water body: Note the exact location of your find and take clear photos or keep a sample. You may transport suspect species directly to a DNR office for identification purposes. Then:

- Report online using EDDMapS: eddmaps.org or
- Contact an Invasive Species Specialist: mndnr.gov/aiscontacts or
- Call 651-259-5100.

Invasive carp: Invasive carp captures must be immediately reported to the DNR, call 651-587-2781 or email invasivecarp.dnr@state.mn.us. Please take a photo, keep carcass cool but do not freeze, and make arrangements with the DNR to transport the carp to the nearest area fisheries office.

CONNECT WITH OUR PARTNERS

Contact our partners for current research and additional outreach and education resources.

- Minnesota AIS Research Center at the University of Minnesota: maisrc.umn.edu
- University of Minnesota-Extension AIS Detectors: maisrc.umn.edu/ais-detectors
- Minnesota Sea Grant: seagrant.umn.edu
- Wildlife Forever: wildlifeforever.org

The Minnesota DNR prohibits discrimination in its programs and services based on race, color, creed, religion, national origin, sex, marital or familial status, disability, public assistance status, age, sexual orientation, and local human rights commission activity. Individuals with a disability who need a reasonable accommodation to access or participate in DNR programs and services or to request this document in an alternative format, please contact the DNR ADA Title II Coordinator at info.dnr@state.mn.us, 651-296-6157. We welcome calls from Telecommunications Relay Service (TRS) users. For assistance in other languages, please call 651-296-6157 or 888-MINNDNR (646-6367).

This program receives Federal financial assistance from the U.S. Fish and Wildlife Service. Under Title VI of the 1964 Civil Rights Act, Section 504 of the Rehabilitation Act of 1973, Title II of the Americans with Disabilities Act of 1990, the Age Discrimination Act of 1975, and Title IX of the Education Amendments of 1972, the U.S. Department of the Interior prohibits discrimination on the basis of race, color, national origin, age, sex, or disability. If you believe that you have been discriminated against in any program, activity, or facility, or if you need more information, please write to either Minnesota DNR, 500 Lafayette Road, St. Paul, MN 55155-4049 or Office of Diversity, Inclusion and Civil Rights, U.S. Department of the Interior 1849 C Street, NW Washington, DC 20240.

©2022, State of Minnesota, Department of Natural Resources

Printed on recycled paper containing a minimum of 10 percent post-consumer waste and vegetable-based ink.

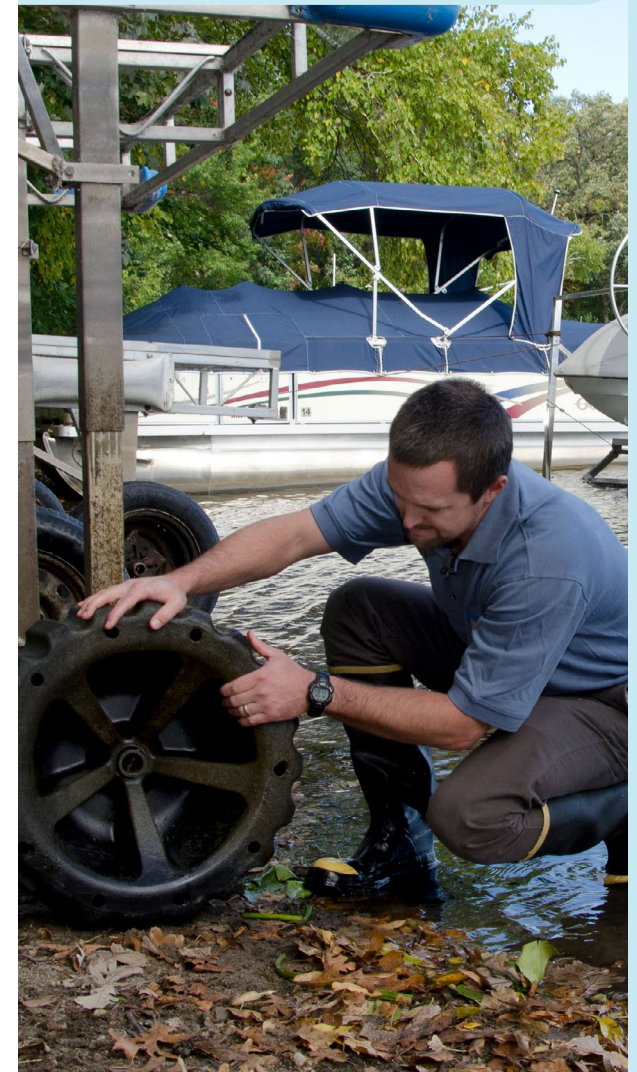
Ecological and Water Resources
500 Lafayette Road
St. Paul, MN 55155-4040
888-646-6367 or 651-296-6157
mndnr.gov

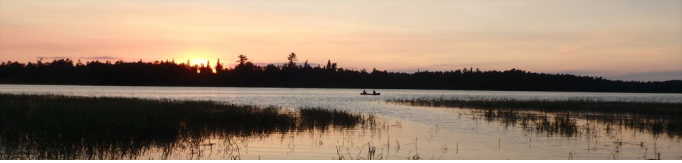
EWR_0027_22

m DEPARTMENT OF
NATURAL RESOURCES

HELP PROTECT MINNESOTA WATERS

Take action to prevent the spread of aquatic invasive species.





Watercraft



Gear and Equipment



Live Bait



Live Animal Trade



Live Plant Trade

HOW DO PEOPLE SPREAD AQUATIC INVASIVE SPECIES?

People spread aquatic invasive species (AIS) when moving boats and water recreation equipment. Some AIS can attach to boats and gear that is moved from one water body to another. Some AIS are very small and can go unseen in water inside equipment or bait buckets. People also spread AIS by releasing bait, aquarium pets and aquatic plants.

WHY IS IT IMPORTANT TO PREVENT THE SPREAD?

Once an invasive species is established in a water body, removal of the entire population is highly unlikely. Management of established populations requires long-term and resource-intensive efforts. Therefore, preventing the spread of AIS is critical to protecting Minnesota waters.

Minnesota has laws to minimize the introduction and spread of AIS. Violating AIS laws can result in fines up to \$1,000. Visit mndnr.gov/AIS for details.

WHAT CAN WE DO TO HELP?

Most Minnesotans care about and already take action to prevent the spread of AIS. You can join them in protecting Minnesota waters. Take personal responsibility, take action and take the pledge:



PLEDGE TO DO YOUR PART



mndnr.gov/AISpledge



DO YOUR PART TO PROTECT MINNESOTA WATERS

ACTION KEY



CLEAN to remove plants, small animals, and debris.



DISPOSE of unwanted bait in the trash.



DRAIN all water. Remove drain plugs and keep plugs out during transport.



DRY shoreline equipment for 21 days before moving from one water body to another.



NEVER RELEASE bait, aquarium pets or aquatic plants.

You can decontaminate your equipment by rinsing with hot water at 120F for 2 minutes or 140F for 10 seconds. If needed, spray with high pressure to remove attached debris. Find free stations at mndnr.gov/decon



KNOW THE LAWS

- **You may not transport** aquatic plants or prohibited invasive species, dead or alive.
- **You may not release** bait or non-native species into Minnesota waters.
- **You may not launch watercraft** or place a trailer in the water if it has aquatic plants, zebra mussels or other prohibited invasive species attached or water present in compartments.
- **You must drain all water**, remove the drain plug(s) and leave all water-draining devices open when transporting watercraft, gear and equipment.
- Authorized watercraft inspectors will physically inspect your boat, trailer, equipment and compartments that hold water. Inspectors can prohibit the launching or operation of water-related equipment if a person refuses to allow an inspection or doesn't remove water or AIS.

TAKE ACTION

Learn and practice the AIS prevention actions to take before leaving a water access or shoreland. Required actions are described in the Action Key and are noted as icons under each activity.

BOATING AND PADDLING

All types of watercraft (e.g., motorboats, wake sport boats, jonboats, pontoons, personal watercraft, sailboats, canoes, kayaks, paddleboards) and related equipment (e.g., trailers, anchors, ballast tanks and bags, hydraulic pontoon lifts).

ALWAYS:



Additional best practices:

- Decontaminate: visit mndnr.gov/decon
- Rinse with water or spray with high pressure water.
- Dry for 5 days.

MOVING SHORELINE EQUIPMENT

Any equipment that sits in the water for an extended period of time (e.g., docks, boat lifts, swim rafts and associated equipment).

ALWAYS:



Additional best practices:

- Decontaminate.
- Hire a permitted Lake Service Provider business to decontaminate, install or remove your equipment.



USING GEAR FOR OUTDOOR RECREATION

Any gear (e.g., waders, nets, wetsuits, traps, blinds, decoys, pushpoles) used in Minnesota waters for fishing, hunting, scuba diving, swimming, sailing, bait harvesting, and ricing.

ALWAYS:



Additional best practices:

- Use a brush to scrape or towel to wipe off plants, mud and debris.
- Rinse with water.
- Dry for 5 days.

FISHING WITH LIVE BAIT

Any minnows, leeches, worms and other legal live bait. All earthworms are non-native and can damage forests if released. Water may not be transported away from the water body. See Fishing Regulations mndnr.gov/fishingregs for more details.

ALWAYS:



Additional best practices:

- Bring a cooler with ice to keep your catch fresh.
- Bring extra water to keep leftover live bait. On shore before leaving, you must drain and refill the bait container with bottled or tap water.



CARING FOR LIVE AQUATIC PLANTS AND ANIMALS

Any aquatic plants and animals kept in aquariums, human-made water garden ponds, classrooms, or for seafood.



Additional best practices:

- Choose low-risk or native species.
- Dispose of unwanted plants in the trash or compost.
- Contact a local pet store, vet or hobbyist club for rehoming options if you have a pet or plant you no longer want or can no longer care for.