



Customized Experiences Presented By The Statue of Liberty-Ellis Island Foundation

Bring Context to Your Guests' Experience

The non-profit Statue of Liberty-Ellis Island [Foundation](#) offers tailored experiences to enhance your special event on Ellis Island or at the Statue of Liberty Museum. From **family history research** to opening **remarks** to **keynote addresses**, the Foundation's experts share stories of Ellis Island immigration and the history of the Statue of Liberty, while helping guests explore their own family's connections to America's Golden Door.

Previous offerings include:

- Keynote address to high-value donors at a celebration hosted by major healthcare facility
- Q&A session for attendees of an annual sales meeting
- Researching and presenting family history records to select VIPs at a corporate event

To learn more about The Statue of Liberty-Ellis Island Foundation and our custom programming, read on and watch this two-minute [video](#).





ABOUT

The Statue of Liberty- Ellis Island Foundation



Together We Ensure the Future of These Beloved Monuments

The Statue of Liberty-Ellis Island [Foundation](#) is a non-profit that collaborates with the National Park Service in one of America's most successful public-private partnerships. In 1982, President Ronald Reagan asked Lee Iacocca to head a private-sector, philanthropic effort to raise funds for and oversee the restoration and preservation of the Statue of Liberty and Ellis Island. The American people responded enthusiastically – and continue to do so 40+ years later, donating hundreds of millions of dollars to provide support for our mission.



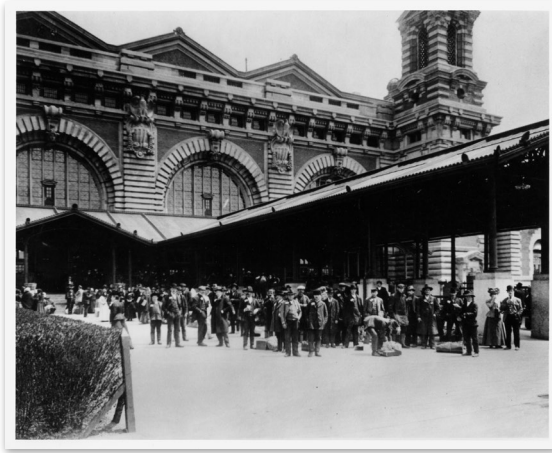
Transforming the Visitor Experience

The Foundation's other major initiatives include creating an immigration museum on Ellis Island, constructing the Statue of Liberty Museum, establishing The American Immigrant [Wall of Honor](#), maintaining museum exhibits, and funding hundreds more projects on the islands. The organization also developed and manages the free 65-million-record [Ellis Island Passenger Database](#). No government funds have been used by the Foundation for restoration and preservation projects at these national monuments.



Discovering Your Family's History

The American Family Immigration [History Center](#) is home to the Ellis Island Passenger Database, which comprises nearly 65 million passenger arrival records for travelers entering the Port of New York 1820–1957. This awe-inspiring resource is available free online and at the History Center on Ellis Island, enabling the public to explore immigration documents, find connections to their ancestry and heritage, and offer their own contributions to an ever-growing catalogue of family stories. With more than 30% of Americans tracing at least one ancestor through Ellis Island and the Port of New York, the History Center is an essential experience on one's genealogical journey.

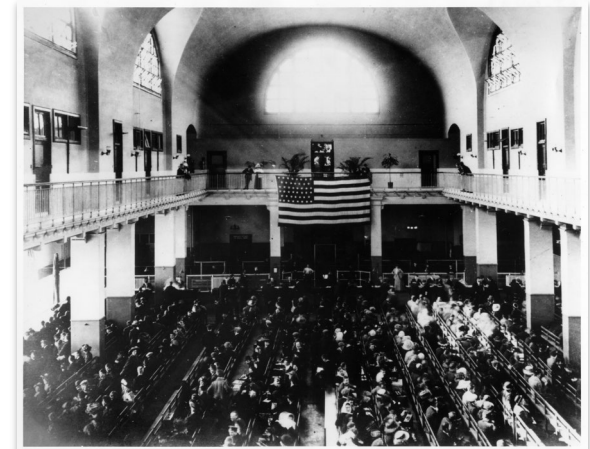


LIST OR MANIFEST OF ALIEN PASSENGERS FOR THE UNITED STATES

Required by the regulations of the Secretary of Commerce and Labor of the United States, under Act of Congress approved February 20, 1907, to be delivered to the U.S. Customs Officer at the port of arrival.

S. S. *Bellevue* sailing from *Switzerland* August 10, 1908

No.	Name	Age	Sex	Color	Religion	Place of Birth	Profession	Marital Status	Number of Family Members	Remarks
1	Bellevue	30	M	W	Catholic	Switzerland	Farmer	Married	4	
2	Bellevue	25	F	W	Catholic	Switzerland	Farmer	Married	4	
3	Bellevue	10	M	W	Catholic	Switzerland	Farmer	Married	4	
4	Bellevue	8	F	W	Catholic	Switzerland	Farmer	Married	4	
5	Bellevue	5	M	W	Catholic	Switzerland	Farmer	Married	4	
6	Bellevue	3	F	W	Catholic	Switzerland	Farmer	Married	4	
7	Bellevue	2	M	W	Catholic	Switzerland	Farmer	Married	4	
8	Bellevue	1	F	W	Catholic	Switzerland	Farmer	Married	4	
9	Bellevue	0	M	W	Catholic	Switzerland	Farmer	Married	4	
10	Bellevue	0	F	W	Catholic	Switzerland	Farmer	Married	4	





CUSTOMIZE

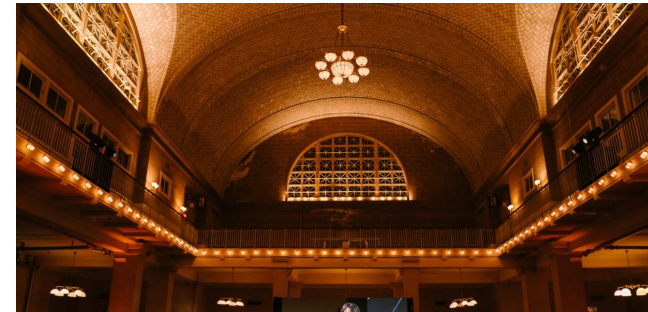
Your Event Experience



Sample Experiences

Our team will customize a program that enhances your guests' experience and integrates seamlessly into your event's structure. Potential scenarios include:

- **Remarks from our Foundation experts** about the monuments' history and the immigrant experience. Ranging 5-30 minutes, presentations can incorporate relevant details (e.g., how immigration influenced a company's history).
- **Panel discussion** and/or **Q&A session** addressing relevant historical and family heritage topics.
- **Personalized family heritage documents**, gathered by the Foundation's expert researchers, to present to event VIPs.
- **Inscriptions on The American Immigrant Wall of Honor**, which is located adjacent to the museum on Ellis Island and home to nearly one million names.
- **Activating the American Family Immigration History Center**, enabling guests to discover their connections to Ellis Island.



Sample Speaker & Presentation Topics

The History of Lady Liberty:

- What inspired the French to gift the statue to the U.S.?
- What do the statue's crown, broken shackles, tablet symbolize?
- How was the statue constructed?

The Ellis Island Immigrant Experience:

- Why did the U.S. government build Ellis Island?
- What did passengers experience sailing to America (e.g., conditions, passengers born or died at sea)?
- Upon arrival, how were passengers processed?

Ellis Immigrants & American Culture:

- Hollywood – Frank Capra, Claudette Colbert, Cary Grant, Bob Hope
- Music, Arts & Culture – Irving Berlin, Kahlil Gibran, Claude McKay
- Science – Albert Einstein, Chien-Shiung Wu
- Sport – Knute Rockne, Charles Atlas

Exploring Your Ellis Island Connections:

- More than 30% of Americans can trace at least one ancestor to Ellis Island, can you?
- What is the Ellis Island Database?
- What information is needed to begin researching your family's immigration story?

Our Experts



Jesse Brackenbury
President & CEO

Jesse joined The Statue of Liberty-Ellis Island Foundation in May 2021. Prior to the Foundation, he led the Rose Kennedy Greenway Conservancy in Boston. His experience also includes working for the Boston Consulting Group on strategy, real estate, and other projects; leadership roles at the NYC Department of Parks & Recreation; and as part of the United National World Food Programme in Italy.

Jesse serves on the Board of the City Parks Alliance, a national non-profit that advocates for urban green spaces. He holds an MBA from the University of California-Berkeley and a BA from William College.



Stephen Lean
Director,
Family History Center

Having started his career in the corporate sector, Stephen embraced his passion for history and storytelling when he joined the Foundation on July 4, 2015. Under Stephen's leadership, the History Center's team is an indispensable resource for visitors exploring their family heritage and understanding the Ellis Island immigrant experience.

Stephen holds a B.A. in American History. Armed with his deep knowledge of Ellis Island and the Ellis Island immigrant experience, Stephen is a frequent guest speaker and an expert for local, national, and international media.

Members of the Foundation's History Advisory Committee are also available as topic experts.



Contact Information

The award-winning Statue of Liberty Museum and historic Ellis Island are events spaces like no other. Guests find themselves immersed in history, celebrating in the shadow of Lady Liberty and walking in the steps of our ancestors.

Suzanne Mannion
Director of Public Affairs
The Statue of Liberty-
Ellis Island Foundation
smannion@libertyellisfoundation.org
(o) 212-561-4517 | (m) 201-725-0471

Dennis Marion
Associate Director of Fundraising
The Statue of Liberty-
Ellis Island Foundation
dmarion@libertyellisfoundation.org
(o) 212-561-4516 | (m) 917-587-5957



NOTE: Evelyn Hill Inc. (EHI) is the exclusive concessionaire for the National Park Service at the Statue of Liberty National Monument and Ellis Island. All events are coordinated through EHI's special event division, [Ellis Island Events](#). Contact Patti Golden at 212-344-0996 for information.





WE LOOK FORWARD TO CREATING A MEMORABLE EXPERIENCE

For additional information:



Visit our [website](#)



Explore our [blog](#)



Follow us @StatueEllisFdn

