



DAKOTA PRAIRIE LODGE & RESORT

PRAIRIE NEWS



DID YOU KNOW...

We're getting excited for summer and fall – our favorite seasons. Why? You can probably guess... hunting! With pheasant nesting season in full swing, we decided to share a few pheasant fun facts with all of you.

Average weight:

Males 2-3 lbs., females 2 lbs.

Average tail feather length:

Over 20 inches for males

Favorite foods:

Corn, seeds, and insects

Want more fun facts? Follow us on Twitter and Instagram!

 @sd_pheasanthunt

 @sd_pheasanthunting



PHEASANT NESTING SEASON IS HERE!



Spring has arrived in South Dakota, and we have been enjoying beautiful weather at the Lodge. That also means that it's about time for hen pheasants to begin laying their eggs. We are always on the lookout for nests.

Hens typically nest on the ground, and nest initiation begins between April and June. After an incubation period of about 23 days, the chicks will hatch. The first hatch usually occurs in the middle of June. We can't wait!

LODGE UPDATE

Last month, we shared that we have been planning some new food plots and nesting areas to foster a safe, healthy environment for our native pheasant population to enjoy. We are committed to ensuring that our local South Dakota pheasants thrive here on our land for years to come. This month, we have started the process of executing our habitat protection plans. It's still a little bit too early to plant our corn, sorghum, or millet, because we wouldn't want an early frost to foil our efforts. But we have started mowing and disking our food plots to discourage the hens from nesting there.

We also have cows in many of our food plots right now so that they will eat the rest of the corn. Our pheasants typically start laying eggs in May – it's almost time!

In other news, we have been scoping out the local prairie dog towns and getting supplies ready for those upcoming hunts. There have been lots of prairie dogs spotted running around in the warm spring weather!



SPOTLIGHT ON FISHING

We talk a lot about bird hunting – whether it's pheasants, ducks, or mourning doves. But our Lodge is also an excellent destination for walleye fishing on the beautiful Missouri River. We're fortunate to be located just a short distance away from the so-called "Big Muddy," a nickname that references the large quantities of sediment our river carries downstream.

Even on the hottest summer days, early mornings and evenings on the Missouri River are refreshing and cool. The longest river in North America, the Missouri is home to some of the nation's best hunting grounds and most robust fishing waters. It is the perfect place for anyone looking for adventure.



OUR UNIQUE MISSOURI RIVER LOCATION

Our local section of the Missouri River is actually called a lake because it's positioned between two dams. When you fish with us on Lake Francis Case, you'll get a Missouri River experience like no other. There are plenty of fish in the lake, including species like walleye, northern pike, sauger, sunfish, yellow perch, common carp, black bullhead, channel catfish and smallmouth bass. But that's not all.

Our favorite thing about the lake is that its temperature stays stable all summer, meaning there's good fishing all season long. Even in August, when it's particularly hot, the water level doesn't drop, making for a safer fishing experience with even more great catches! Plus, the lake is wide and deep – a fisherman's paradise.



THE PERFECT ADD-ON TO YOUR HUNTING TRIP

Many of our hunters like to stay a few extra days with us at Dakota Prairie Lodge & Resort and add a fishing expedition onto their itineraries. For example, if you're joining us for prairie dog hunting this summer, you might want to mix it up and spend a day basking on the river. It never hurts to give your eyes a little break from looking through the scope!

Missouri River fishing is some of the best in the country, and we are excited to offer premium fishing experiences with professional, knowledgeable local guides. When you're ready to test your fishing prowess, give us a call. We can't wait to see you this summer!

PRAIRIE PUZZLE

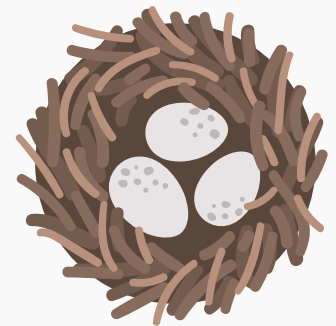
April Question: How many eggs does a pheasant typically lay?

a) 10 eggs

b) 12 eggs

c) 8 eggs

d) 9 eggs



Submit your answer by May 10, 2023, for a chance to win! Answers will be accepted via email, phone, or mail. Correct answers will be entered into the prize drawing to receive a FREE Dakota Prairie Lodge & Resort hat.