



# DAKOTA PRAIRIE LODGE & RESORT

# PRAIRIE NEWS



## SUNNY DAYS ON THE PRAIRIE



Spring and summer are some of our favorite times of year at the Lodge, as the fields look lush and green and pheasant chicks scurry around our acreage. Plus, Brule County has been enjoying some of its best weather yet.

At the Lodge, we have had the pleasure of hosting the summer's first prairie dog hunters this month – and we're looking forward to many more to come. This summer is sure to be packed with hunting, fishing, and outdoor adventures of all kinds.

## BRAND-NEW TARGETS

We are always aiming to improve your experience at the Lodge. That is why we love to expand our offerings and provide our hunters with never-ending fun. This year, we are excited to announce that we have a series of new targets for you to practice your shots.

They are set up at distances of 100, 200, 300, and 400 yards – plus, there's a challenge target at 800 yards. Do you think you could be the one to hit it?

Our hunters love to kick back and socialize after a full day of hunting, and a little bit of friendly target competition is the perfect addition to a relaxing evening on the South Dakota prairie.

## NEW FARM-TO-TABLE DINING

We're thrilled to share an exciting update to our Lodge's offerings: new farm-to-table dining! This spring and summer, we will be planting a large garden right in front of our Lodge, and we cannot wait to share the fruits (and vegetables) of labor with all of our hunters. Our biggest crop so far? We have planted half an acre of sweet corn. Just imagine sitting down to a hearty South Dakotan dinner after a full day of hunting in the fields. On your plate, you'll find succulent prime rib accompanied by juicy, delicious corn on the cob. And it was grown not even 100 yards from where you're sitting!

But corn is far from the only thing that we are planting. We are also growing potatoes, several types of tomatoes and peppers, cucumbers, squash, pumpkins, watermelon, canteloupe, eggplants, beets, radishes, and more.

Of course, everything in our Lodge garden is organic and chemical-free. And even more importantly, it's all delectable!



## SPOTLIGHT ON PRAIRIE DOG HUNTING

This month, we had the pleasure of welcoming our first group of prairie dog hunters for the year. The group of eight enthusiastic hunters enjoyed taking down our local varmints. Hosting them at the Lodge made us excited for a summer full of prairie dog hunts. When it comes to hunting prairie dogs, there's no place like South Dakota! In our great state, prairie dogs are considered varmints, so there are no seasonal restrictions and no daily limits. That means you're free to keep shooting until you run out of ammo!

Hunting varmints like prairie dogs can help you develop your rifle skills and become a sharper shooter. You'll get excellent practice shooting moving targets in real-world environments and hone many valuable skills, including estimating range and predicting wind drift or deflection.



## OUR LOCAL PARTNERSHIPS

Prairie dog "towns" – the name for their network of underground tunnels – in our area of South Dakota can sprawl for up to a mile. And for farmers trying to grow crops, that's a problem. We have partnered with locals who are thrilled to have our help thinning out their prairie dog population. The dreaded varmints ruin their fields by digging hundreds of holes and vast tunnel networks, so our farmer partners are happy to have us take them down.



## TEST OUT A NEW WEAPON

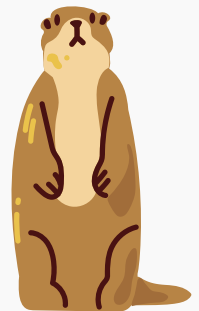
We're excited to roll out one of our newest initiatives: gun rentals. You love your gun, and it has served you well for years. But are you curious about switching it up for a day? When you hunt prairie dogs with us at the Lodge, you are welcome to rent out one of our best-in-class rifles to test out another weapon you're interested in.

We have an excellent selection, including a 6.5 Creedmor (imagine shooting 1,000 yards!), a .223, a .22-250, a .17 WSM, and a .17 HMR. Of course, we have ammo for all of those guns as well. For just \$25 per day plus cleaning, you can take a new gun for a spin and try your luck at taking down our local varmints!

## PRAIRIE PUZZLE

**May Question:** What species of prairie dog lives in South Dakota?

- a) Black-tailed prairie dog      b) White-tailed prairie dog  
c) Mexican prairie dog      d) Gunnison's prairie dog



Submit your answer by June 10, 2023, for a chance to win! Answers will be accepted via email, phone, or mail. Correct answers will be entered into the prize drawing to receive a FREE Dakota Prairie Lodge & Resort hat.