



## Performance & ease of use

- Best lifting speed of 48 sec.
- Industry leading working envelope with an outreach of 40 ft
- Fully proportional and simultaneous movements
- Ease of transport

## Excellent robustness

- Rugged hoods with ergonomic handle
- Long lasting structural design

## Maximized total cost of ownership

- Haulotte Activ'Screen (on board diagnostic)
- Haulotte Stop Emission System : automatically turns on / off the engine
- Exclusive modular basket with upper control box cover and tool tray
- Easy access to all components





# HA61 RTJ 0

## ROUGH TERRAIN ARTICULATING BOOMS



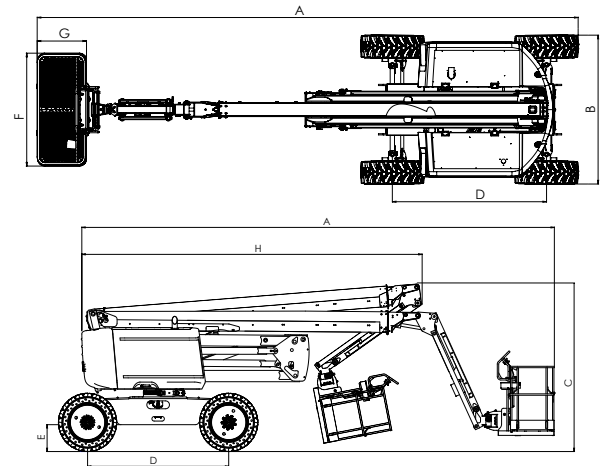
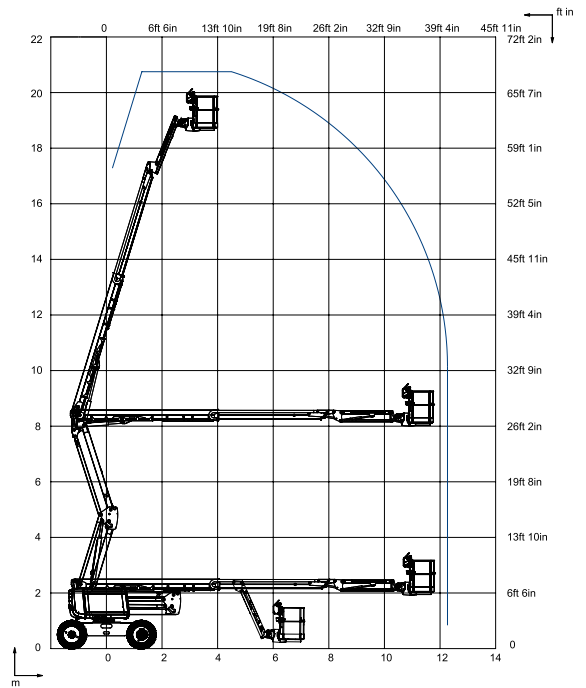
### TECHNICAL DATA

### HA61 RTJ 0

Working height	67 ft 7 in
Platform height	61 ft
Horizontal outreach	40 ft
Up and over height	27 ft 7 in
Lift capacity	500 lb
<b>F</b> x <b>G</b> Platform size	8 ft x 2 ft 7 in
<b>A</b> Length	28 ft 10 in
<b>B</b> Width	7 ft 11 in
Height - stowed	8 ft 3 in
<b>H</b> Transport length	21 ft 4 in
<b>C</b> Transport height	9 ft 7 in
Vertical jib rotation	140° (+70°/-70°)
Platform rotation	180° (+90°/-90°)
Turntable rotation	360° continuous
Tailswing	5.6 in
<b>D</b> Wheelbase	8 ft
<b>E</b> Ground clearance	15 in
Tilt alarm	5°
Drive speed	0.5 - 3.1 mph
Gradeability	45 %
Turning radius - outside	13 ft 1 in
Tires - solid rough terrain	850 x 340"
Engine	Kubota 48.6kW, 66hp, Tier 4f
Weight	20,500 lbs

### STANDARD EQUIPMENT

- Haulotte Activ' Screen
- Haulotte Stop Emission System
- Front oscillating axle increases stability on uneven ground
- Upper control box protection cover and tool tray in ultra-solid plastic
- Rotating beacon
- Modular standard basket 8 ft x 2 ft 7 in, Drop bar entry gate
- Safe to use in winds up to 37 mph
- 4 simultaneous movements for maximum productivity
- 500 lbs (2 persons) load capacity
- Permanent limited slip differential
- 4 wheel drive, 2 wheel steer
- AC power to platform 110/230 V
- Swing out engine tray for ease of maintenance
- Universal telematics plug
- Travel alarm
- Electric pump system and emergency descent
- 12 V battery / electrical control system
- Sound and light alarm for tilt and load
- Engine pre-heater with light indicator
- Low fuel level indicator (upper control box)
- Hour meter



### OPTIONS AND ACCESSORIES

- Haulotte Activ' Shield™ Bar 2.0
- Lateral swing door entry gate
- Hydraulic generator Dynaset 3.5Kw
- Air-line to platform 6.5 mm inner diameter
- 55 W working light
- Power to platform 110 / 230 V (With or without circuit-breaker 30mA)
- Flashing light
- Cold weather kit : 14°F / 77°F
- Hot weather kit : hydraulic oil cooler + hydraulic oil
- Biodegradable hydraulic oil
- Non-marking tires
- Glazier pack
- Spark arrestor and electric one-way valve
- Large modular basket 2.44 m x 0.91 m

400042850 - We reserve the right to modify the technical characteristics of this document without notice - 02/2018