

Statement of Capabilities



Brian P. Smith, PE, P. Eng,
PTOE, PMP
President

CERTIFICATES OF AUTHORITY

TN - EF 6349
MS - EF 27420
GA - PEF 008249
TX - F-23453

DBE CERTIFICATIONS

TN, MS, GA, TX

OTHER CERTIFICATIONS

SBE, MBE, TVA-Valley
Business Presence

DOT ENG. PREQUALS

TN, TX, GA

PROFESSIONAL ARCHITECTURAL / ENGINEERING LICENSES

TN, MS, GA, TX, &
CANADA



CORE COMPETENCIES

Smith Engineering & Associates, LLC (dba. SEA) strives to provide both innovative and efficient engineering solutions to meet the needs of its clients while maintaining uncompromised quality, integrity, and professionalism. With staff backgrounds in economic development, engineering design, and construction, our experience encompasses many aspects of transportation engineering to provide sound options to meet budget, schedule, and feasibility constraints.

With close to 100 years of combined staff experience in traffic and transportation engineering, our staff has the experience to handle the most complex of transportation projects. Some of our services include, but are not limited to the following:

Economic Development

Grant Writing/Funding Assistance
Incentive Creation
Solar and Industrial Siting
Marketing/Feasibility Studies
Economic Impact Studies

Traffic Engineering

Traffic Counts
Traffic Analysis/Modeling
Unconventional Intersection Modelling
Congestion Management
Traffic Studies (O&D, TIA, IJR, etc.)
Signal and ITS Design
Signal Coordination, Timing, and Phasing
Signing and Marking Design
Complex Traffic Control Design
Parking Studies
Lighting Studies
Lighting Analysis/Modeling
Lighting Design (Interchange/Aviation)
Lighting Standard Drawings
Lighting Special Provisions

Electrical Engineering

Electrical Design (Emergency Power)
Electrical Design (Power Plant <250MW)
Substation Design
Transmission Line Design

Freight/Commuter Rail Eng.

Intermodal/Transload Master Plan
MOW and Rail Design
At Grade Crossing Analysis/Design
Inland Rail Port Feasibility Study

Transportation Engineering

Rural/Urban Collector Design
Rural/Urban Arterial Design
Rural/Urban Freeway Design
Complex Interchange Design
Intersection Design
Unconventional Int. Design
Stormwater Design
SWPP Permit
Plan Review/Comment
Erosion Control Design

Utility Engineering

Water Distribution Design
Sewer Collection Design

Marine Engineering

River Port Master Plan
River Port Feasibility Study

Aviation Engineering

Runway Ext./Taxiway Design
Terminal Expansion Design
GEC/Program Manager

Structural Engineering

Structural Plan QA/QC
Structural Building Design
Structural Bridge Design
Retaining Wall Design

Architectural Design

Building Design
Energy Audits
As Built Plan Creation
3d Terrestrial Scanning

Statement of Capabilities

PROFESSIONAL CERTIFICATIONS

PTOE - Professional Traffic Operations Engineer

CSX/NS - Training for RR/ROW Encroachment

ATSSA - Advanced Work zone Training (VA/FHWA)

Project Management Professional (URS/LMS)

NAICS CODES

541310 - Architectural Services

541330 - Engineering Services

541340 - CADD Services

541350 - Energy Audits

541370 - GIS base mapping services

928120 - Economic development assistance

CORPORATE OFFICE

354 Bartlett Circle NE
Cleveland, TN 37312

BRANCH OFFICE

260 Peachtree St. NW
Suite 2200
Atlanta, GA
(404) 230-8464
smith.eng.assoc@gmail.com

**Smith
Engineering &
Associates, LLC**

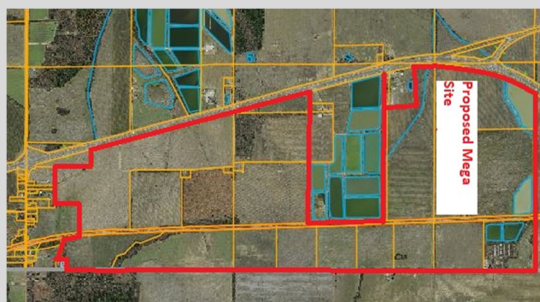
DIFFERENTIATORS

- Our QA/QC traffic engineering staff has published hundreds of peer review articles related to traffic engineering, highway safety, and highway design. They have also been involved with multiple research projects.
- Our senior transportation engineering staff has designed and/or managed projects ranging from \$15k to \$13B. Many of these projects have turned out to be **“State Signature Projects”**.
- Our traffic and transportation engineering staff is trained, certified, and knowledgeable on the use of various software and field equipment.
- SEA understands that larger projects tend to fall outside of budget. Discuss with us regarding **“funding assistance”** opportunities.
- Is your region, county, or municipality in need of industry? Does your agency desire to increase air, rail, or barge traffic? Discuss with us regarding **“Economic Development Assistance”**.

PAST PERFORMANCE



**Private Developer/City of Byram, MS
Traffic Impact Analysis, Conceptual Roadway Design, & Safety Study**



**Chickasaw County/Egypt, MS
Economic Development/Feasibility Study/Industrial Park-Intermodal
Facility Conceptual Layout**