



White Island Pond, Wareham/Plymouth

General Information

White Island Pond is a 284 acre natural pond located on the border of Plymouth and Wareham, just west of Big Sandy and Ezekiel Ponds and east of the Agawam River and Glen Charlie Pond. The pond is separated into 2 distinct basins (East and West). The eastern basin can also be separated into 2 sub-basins (northern and southern). The local residents divide the lake into First Lake (western basin), Second lake (south-eastern basin) and Third Lake (north-eastern basin) The pond has an average depth of ten feet and a maximum depth of 15 feet. Water transparency is about 3 feet, and submerged aquatic vegetation is limited to isolated areas. The pond was a very fertile pond with a history of blue green algae blooms especially in the eastern basin. Alum treatments in 2013 and 2014 and other management measures have led to an improvement in water quality. The ponds waters sources are groundwater and cranberry bogs and its outlet is Red Brook which flows into Buttermilk Bay. The ponds 3.8 miles of shoreline are heavily developed with houses and cranberry bogs.

Recreational Access

White Island Pond is a natural great pond but does not have any true public access points. It is one of the largest ponds in the southeast district without dedicated public access. Due to its status as a great pond, under the Colonial Ordinances of 1641-1647, anglers may pass over unimproved land on foot to access the pond for fishing. There are several beach areas and a boat ramp and mooring area on the western basin but these are restricted to local association members. Please contact MassWildlife, Southeast District Office (508) 759- 3406 for additional information, and/or restrictions pertaining to public access.

Fish Populations

The following fish species were found during MassWildlife surveys: Yellow Perch, Largemouth Bass, Alewife, Smallmouth Bass, Pumpkinseed, Chain Pickerel, White Perch, Banded Killifish, Brown Bullhead, Bluegill, Golden Shiner and American eel. The Alewife (River Herring) population is sea-run, entering from Buzzards Bay via Buttermilk Bay and Red Brook.

Fishing

While public access is limited, White Island Pond has a productive warmwater fishery for Largemouth Bass, Smallmouth Bass and Chain Pickerel as well as panfish such as Yellow Perch, White Perch, Brown Bullhead and Pumpkinseed. The northeastern basin should be the most productive for Largemouth Bass. Due to abundant forage in the form of River Herring, growth rates of game fish in the pond should be good and numerous quality sized fish were observed in the most recent fish survey.

Useful Links:

[Get your Fishing License](#)

[Freshwater Fishing](#)

[Trout Stocking Information](#)

[Freshwater Sportfishing Awards Program](#)

Learn more:

Mass.gov/MassWildlife

Connect with us:

Facebook.com/MassWildlife

Your local

MassWildlife office:

195 Bournedale Road
Buzzards Bay, MA 02532
(508) 759-3406

STOP AQUATIC HITCHIKERS!

Prevent the transport of nuisance species.
Clean all recreational equipment.
ProtectYourWaters.net

Updated: 2018

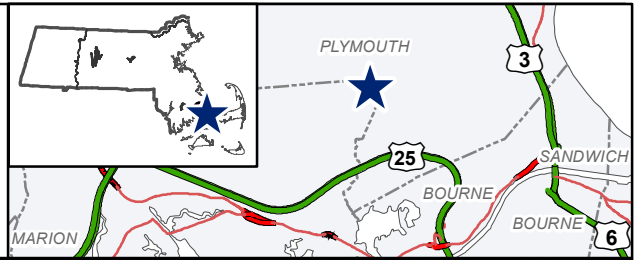


White Island Pond

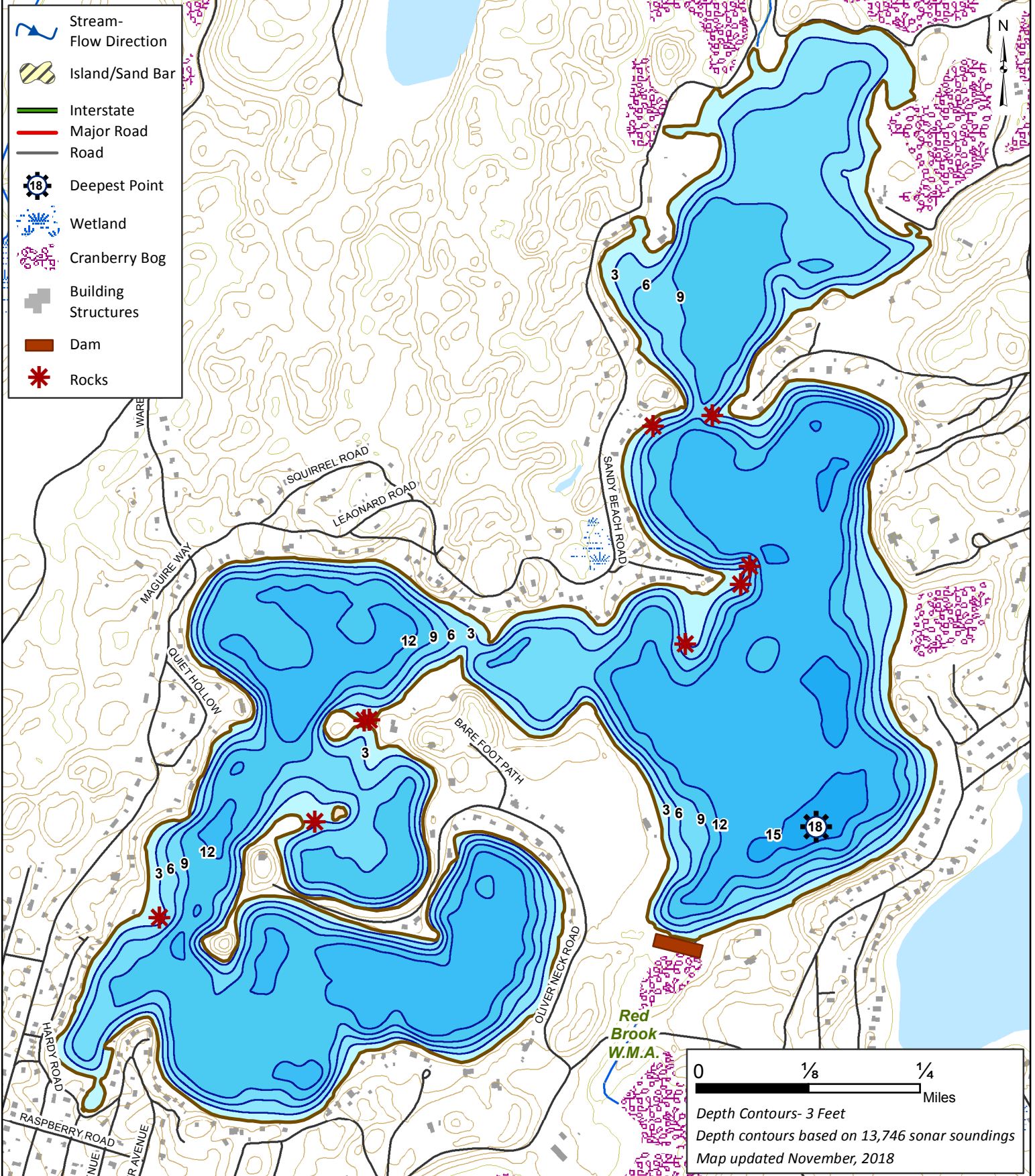
318 Acres

Plymouth/Wareham
Buzzards Bay Watershed

Coordinates: 70°37'0.45"W 41°48'24.13"N
USGS Quad: WAREHAM/SAGAMORE



- Stream-Flow Direction
- Island/Sand Bar
- Interstate
- Major Road
- Road
- Deepest Point
- Wetland
- Cranberry Bog
- Building Structures
- Dam
- Rocks



0 1/8 1/4 Miles

Depth Contours- 3 Feet
Depth contours based on 13,746 sonar soundings
Map updated November, 2018