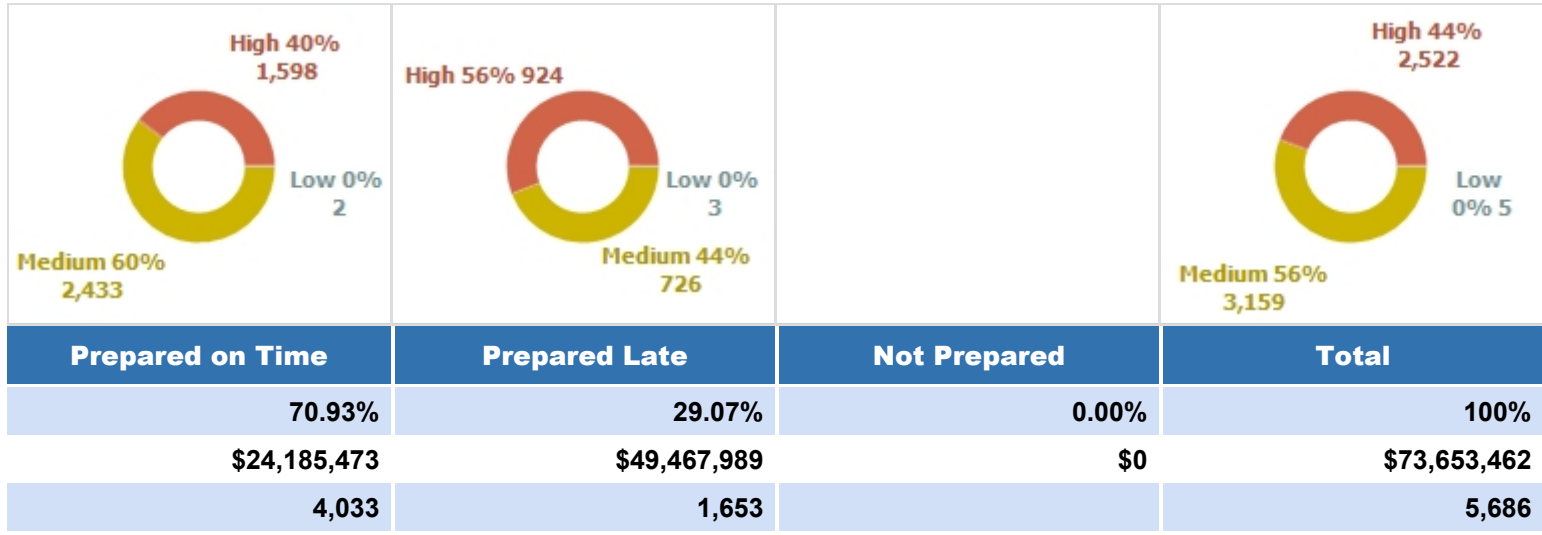
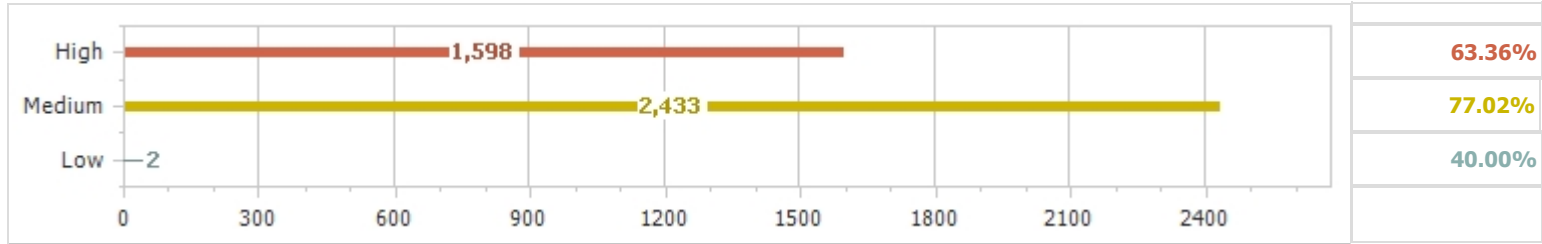


**2022M6 Preparer Timeliness KPIs for: Bunge Total**  
**Region: All Location: All**



**Risk Analysis - Prepared on Time**



**Low Risk - Preparer KPIs**

Prepared on Time	Prepared Late	Not Prepared	Total
40.00%	60.00%	0.00%	100%
\$18,592	\$132,517	\$0	\$151,109
2	3		5

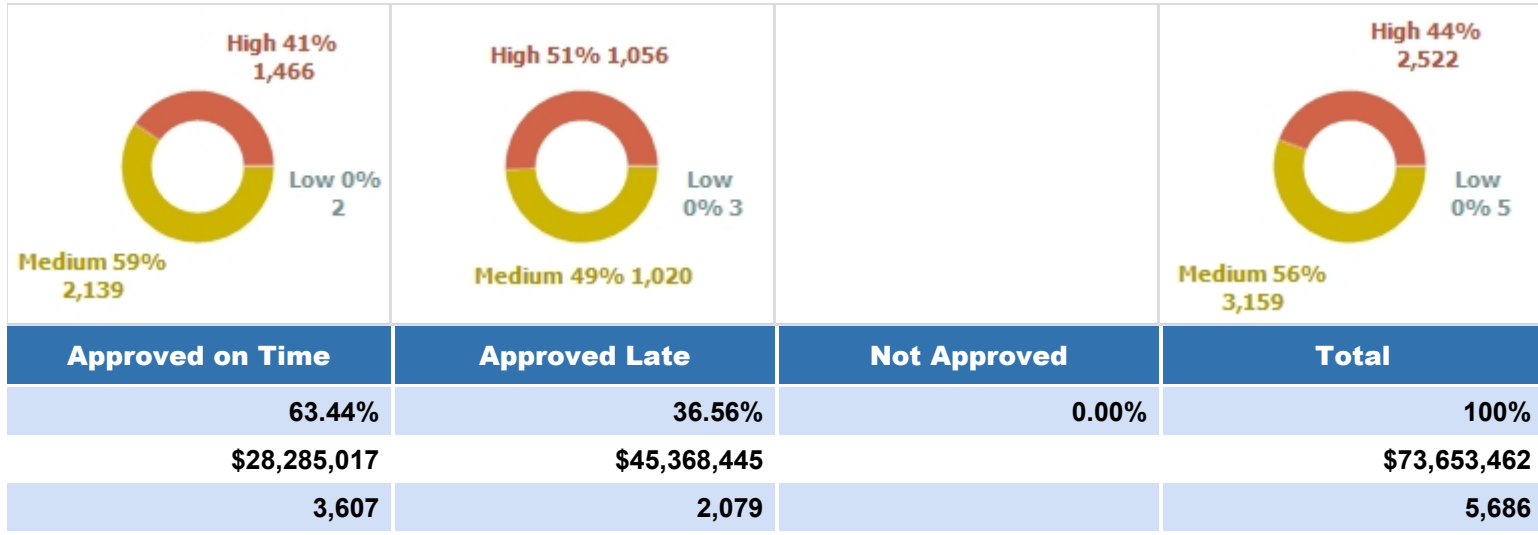
**Med Risk - Preparer KPIs**

Prepared on Time	Prepared Late	Not Prepared	Total
77.02%	22.98%	0.00%	100%
\$17,537,528	(\$4,118,929)	\$0	\$13,418,600
2,433	726		3,159

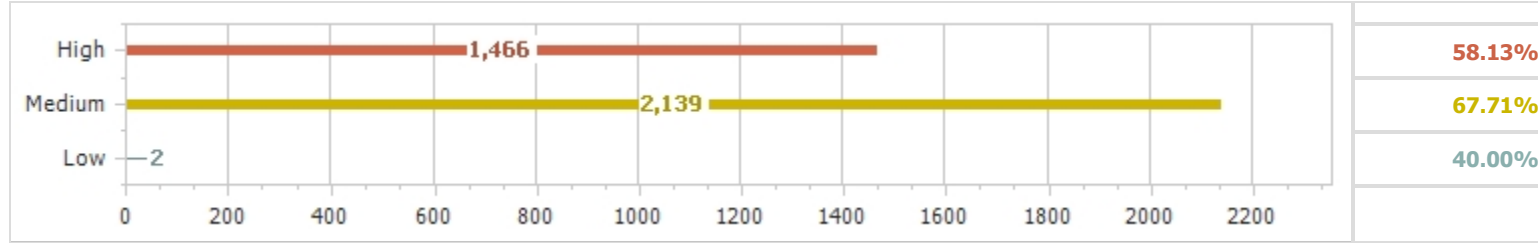
**High Risk - Preparer KPIs**

Prepared on Time	Prepared Late	Not Prepared	Total
63.36%	36.64%	0.00%	100%
\$6,629,354	\$53,454,400	\$0	\$60,083,750
1,598	924		2,522

**2022M6 Approver Timeliness KPIs for: Bunge Total**  
**Region: All Location: All**



**Risk Analysis - Approved on Time**



**Low Risk - Approver KPIs**

Approved on Time	Approved Late	Not Approved	Total
40.00%	60.00%	0.00%	100%
\$18,592	\$132,517	\$0	\$151,109
2	3		5

**Med Risk - Approver KPIs**

Approved on Time	Approved Late	Not Approved	Total
67.71%	32.29%	0.00%	100%
\$18,993,840	(\$5,575,246)	\$0	\$13,418,600
2,139	1,020		3,159

**High Risk - Approver KPIs**

Approved on Time	Approved Late	Not Approved	Total
58.13%	41.87%	0.00%	100%
\$9,272,580	\$50,811,170	\$0	\$60,083,750
1,466	1,056		2,522