



# JABROOT STEEL

## GROUP OF COMPANIES

### PRODUCT & SERVICES PORTFOLIO

## Our Divisions:

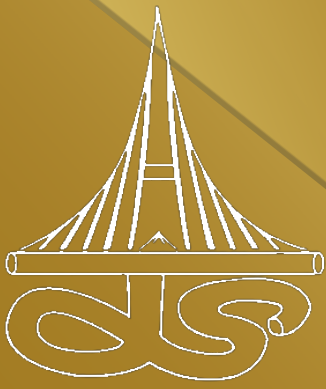
- Steel materials distribution
- Steel products manufacturing
- Fabrication services
- Real-Estate division
- Hardware trading



Jabrootsteel@gmail.com / Enquiry@jabrootsteel.com

025545056 (H.O) / 025520601 (M-39 Office)

[www.jabrootsteel.com](http://www.jabrootsteel.com)



# **JABROOT STEEL**

## **SUPPLY COMPANY LLC**

### **STEEL MATERIALS DISTRIBUTION DIVISION**

**This is our Steel materials distribution division. We specialize in stocking products such as Mild/Carbon Steel pipes, tubes, angles, shafts, round/square bars, mesh, gratings, plates, GI plates and pipes, aluminum sheets, universal beams/columns, and many more.**

**Look at the product details below. Infrequent sizes and higher grades that are less in demand and not mentioned in the below section can also be arranged for orders of high quantity. We also supply Stainless Steel materials of grade SS304 and SS316 - this category of materials is arranged only on orders of high volume.**

*Note: All sizes are not mentioned but can be arranged on orders of high quantity*



## PRODUCT DETAILS

### MS/GI PIPES

GRADE A36 / A53

*(For all the materials - Units are in Kg, m and mm)*

| Size          | Thickness         |                    |
|---------------|-------------------|--------------------|
|               | ERW               | SCH 80 mm Seamless |
| 21.3 mm/0.5"  | 1.2 mm to 2.7 mm  | 3.7 mm             |
| 26.3 mm/0.75" | 0.9 mm to 2.87 mm | 3.91 mm            |
| 33.3 mm/1"    | 1.0 mm to 3.37 mm | 4.55mm             |
| 42.3 mm/1.25" | 1.0 mm to 3.5 mm  | 4.85 mm            |
| 48.3 mm/1.5"  | 1.2 mm to 3.6 mm  | 5.08 mm            |
| 60.3 mm/2"    | 1.2 mm to 3.9 mm  | 5.54 mm            |
| 76.3 mm/2.5"  | 1.5 mm to 5.1 mm  | 7 mm               |
| 89.3 mm/3"    | 1.5 mm to 5.5 mm  | 7.6mm              |
| 114.3 mm/4"   | 1.8 mm to 6 mm    | 8.5mm              |
| 168.27mm/6"   | SCH 40 (7.11mm)   | 10.97mm            |
| 219.08mm/8"   | SCH 40 (8.18mm)   | 12.7mm             |
| 273mm/10"     | SCH 40 (9.27mm)   | 15.09mm            |
| 323.9mm/12"   | SCH 40 (10.31mm)  | 17.48mm            |



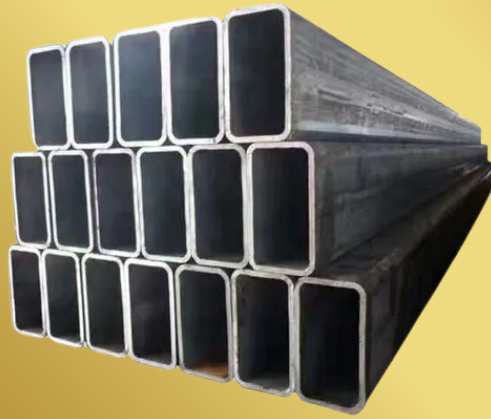
## PRODUCT DETAILS

### MS SHS TUBES

GRADE ASTM A500

| SIZE      | THICKNESS    |
|-----------|--------------|
| 12 x 12   | 1.2 - 1.5 mm |
| 16 x 16   | 1.2 - 1.5 mm |
| 19 x 19   | 1.2 - 1.8 mm |
| 25 x 25   | 1.2 - 3 mm   |
| 30 x 30   | 1.2 - 3 mm   |
| 38 x 38   | 1.2 - 4 mm   |
| 50 x 50   | 1.2 - 5 mm   |
| 60 x 60   | 1.8 - 5 mm   |
| 75 x 75   | 1.8 - 6 mm   |
| 80 x 80   | 1.8 - 5 mm   |
| 100 x 100 | 1.8 - 8 mm   |
| 120 x 120 | 3 - 8 mm     |
| 150 x 150 | 3 - 8 mm     |



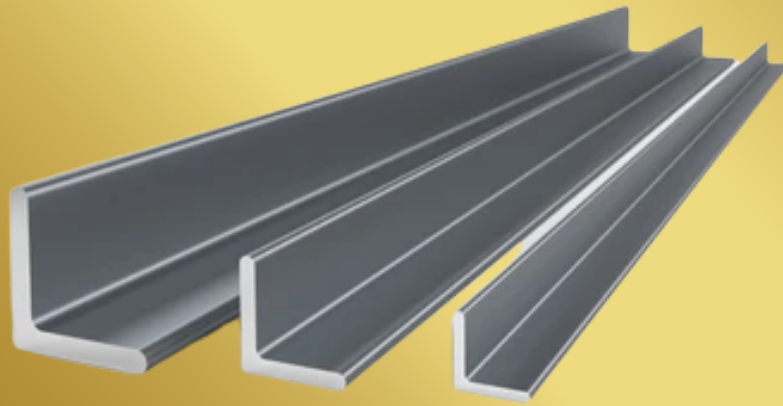


## PRODUCT DETAILS

### MS RHS TUBES

GRADE ASTM A500

| SIZE (mm) | THICKNESS |
|-----------|-----------|
| 40 x 20   | 1.5 - 3mm |
| 50 x 25   | 1.5 - 3mm |
| 60 x 30   | 1.5 - 3mm |
| 60 x 40   | 2 - 3mm   |
| 80 x 40   | 1.2 - 5mm |
| 100 x 50  | 2 - 6mm   |
| 120 x 60  | 3 - 6mm   |
| 150 x 75  | 4 - 6mm   |
| 200 x 100 | 4 - 6mm   |

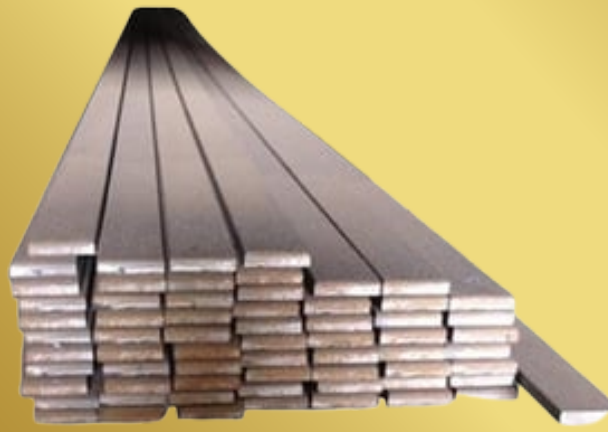


## PRODUCT DETAILS

**MS ANGLE BAR  
(EQUAL LENGTH)**

**GRADE S275**

| <b>SIZE</b>    | <b>THICKNESS</b> |
|----------------|------------------|
| <b>25x25</b>   | <b>3-4mm</b>     |
| <b>30x30</b>   | <b>3-4mm</b>     |
| <b>40x40</b>   | <b>3-6mm</b>     |
| <b>50x50</b>   | <b>3-6mm</b>     |
| <b>60x60</b>   | <b>5-8mm</b>     |
| <b>70x70</b>   | <b>6-8mm</b>     |
| <b>75x75</b>   | <b>5-8mm</b>     |
| <b>100x100</b> | <b>6-10mm</b>    |
| <b>150x150</b> | <b>10-12mm</b>   |
| <b>200x200</b> | <b>16-20mm</b>   |



## PRODUCT DETAILS

### MS FLATBAR

GRADE S275

| Size (mm) | THICKNESS (mm) |
|-----------|----------------|
| 12        | 4-5            |
| 19        | 3-4.5          |
| 25        | 3-8            |
| 30        | 3-8            |
| 38        | 3-12           |
| 50        | 3-12           |
| 60        | 5              |
| 75        | 6-8            |
| 100       | 5-10           |
| 125       | 6-12           |
| 150       | 6-12           |
| 200       | 8-16           |



## PRODUCT DETAILS

**MS ROUND BAR/  
SHAFTING BAR**

**GRADE S275**

| <b>ROUND BAR<br/>SIZE</b> |
|---------------------------|
| <b>6 mm</b>               |
| <b>8 mm</b>               |
| <b>10 mm</b>              |
| <b>12 mm</b>              |
| <b>14 mm</b>              |
| <b>16 mm</b>              |
| <b>18 mm</b>              |
| <b>20 mm</b>              |
| <b>25 mm</b>              |

| <b>SHAFTING BAR<br/>SIZE</b> |
|------------------------------|
| <b>6 mm</b>                  |
| <b>8 mm</b>                  |
| <b>10 mm</b>                 |
| <b>12 mm</b>                 |
| <b>14 mm</b>                 |
| <b>16 mm</b>                 |
| <b>18 mm</b>                 |
| <b>20 mm</b>                 |
| <b>25 mm</b>                 |
| <b>30 mm</b>                 |
| <b>32 mm</b>                 |
| <b>40 mm</b>                 |
| <b>45 mm</b>                 |
| <b>50 mm</b>                 |
| <b>60 mm</b>                 |
| <b>75 mm</b>                 |



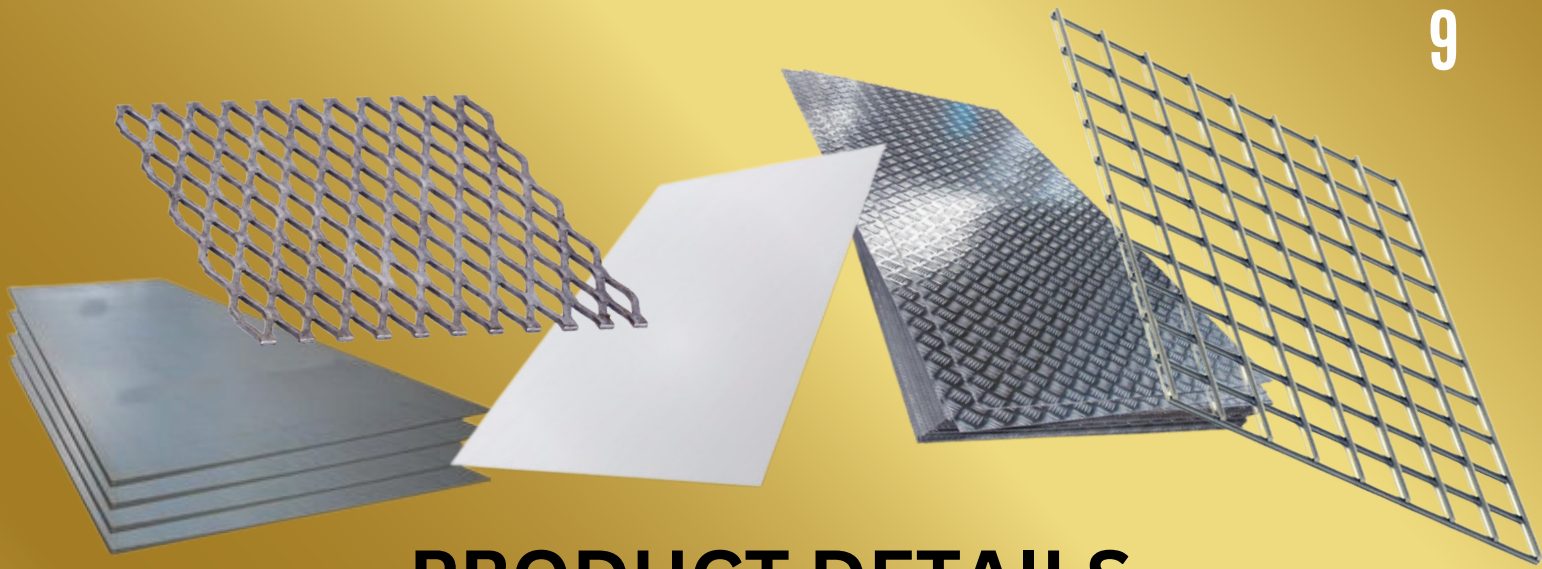


## PRODUCT DETAILS

**MS SQUARE BAR**

**GRADE S275 JR**

| <b>SIZE</b>    |
|----------------|
| <b>10 x 10</b> |
| <b>12 x 12</b> |
| <b>14 x 14</b> |
| <b>16 x 16</b> |
| <b>20 x 20</b> |
| <b>25 x 25</b> |
| <b>30 x 30</b> |
| <b>40 x 40</b> |

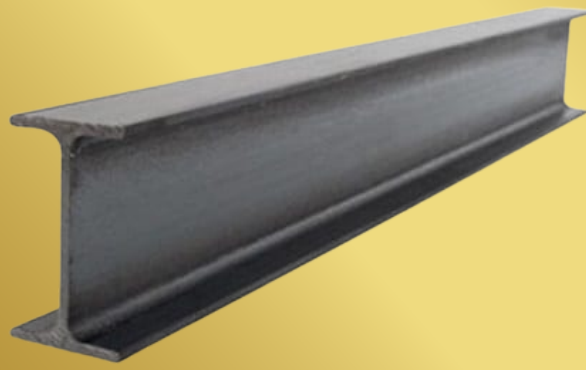


# PRODUCT DETAILS

## PLATES / MESH

GRADE S275 / S355 / A1100 (Aluminium)

| Type                       | Size                                 | Thickness  |
|----------------------------|--------------------------------------|------------|
| Cold-rolled sheets (CR)    | 4x8 ft (1.224 x 2.442 m)             | 0.7-0.9 mm |
| Hot Rolled Sheets (HR/MS)  | 4x8 ft (1.224 x 2.442 m)             | 1.2-100 mm |
| MS Chequered Plates        | 4x8 ft (1.224 x 2.442 m)             | 1.8-10 mm  |
| MS Chequered Plates        | 1.5 x 6 m                            | 2.7-10 mm  |
| MS Plates                  | 2 x 6 m                              | 4-50 mm    |
| GI SHEET                   | 4x8 ft (1.224 x 2.442 m)             | 0.5-3.7 mm |
| Aluminium Sheets           | 4x8 ft (1.224 x 2.442 m)             | 0.7-10 mm  |
| Aluminium Chequered Sheets | 4x8 ft (1.224 x 2.442 m)             | 1.5-4 mm   |
| MS Expanded mesh           | 4x8 ft (1.224 x 2.442 m)             | 2-5 mm     |
| GI welded mesh             | 4x8 ft (1.224 x 2.442 m) Grid- 25x25 | 3-4 mm     |
| GI welded mesh             | 4x8 ft (1.224 x 2.442 m) Grid- 50x50 | 3-4 mm     |



## PRODUCT DETAILS

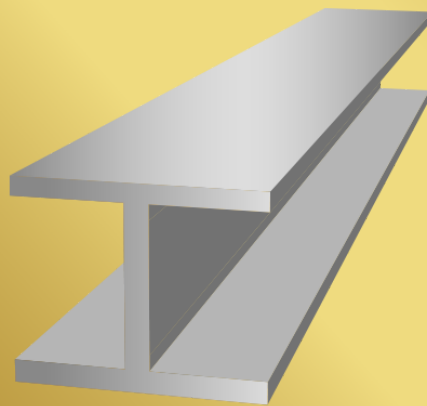
### I-beams

VARIANTS AVAILABLE: HEA / HEB / JIS / IPE / IPEAA

GRADE S275 / S355

| SIZE                   |
|------------------------|
| 100 x 55 x 6.72 kg/m   |
| 100 x 55 x 8.10 kg/m   |
| 120 x 64 x 8.36 Kg/m   |
| 140 x 73 x 10.05 Kg/m  |
| 150 x 75 x 14 Kg/m     |
| 160 x 82 x 12.31 Kg/m  |
| 200 x 100 x 18 Kg/m    |
| 200 x 100 x 21.3 Kg/m  |
| 250 x 125 x 25.7 Kg/m  |
| 300 x 150 x 32 Kg/m    |
| 400 x 140 x 62.60 Kg/m |
| 500 x 180 x 87.7 Kg/m  |
| 600 x 210 x 122.6 Kg/m |





## PRODUCT DETAILS

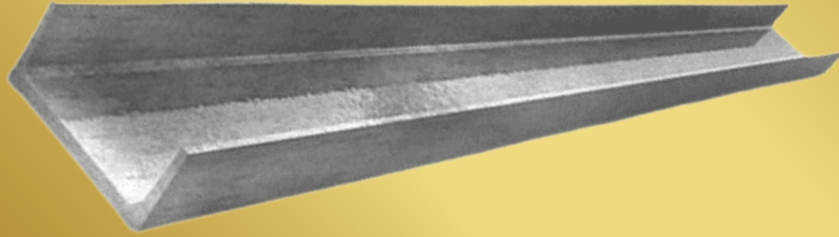
### H-beams

VARIANTS AVAILABLE: HEA / HEB / JIS / IPE / IPEAA

GRADE S275 / S355

| SIZE                           |
|--------------------------------|
| 100 x 100 x 16.9 Kg/m          |
| 125 x 125 x 23.8 Kg/m          |
| 150 x 150 x 31.5 Kg/m          |
| 152 x 152 x 30 Kg/m            |
| 160 x 160 x 42.6 Kg/m          |
| 200 x 200 x 46 Kg/m            |
| 200 x 200 x 49.9 Kg/m          |
| 250 x 250 x (64.4 - 82.2 kg/m) |
| 300 x 300 x (84.5 - 106 Kg/m)  |
| 350 x 350 x (106 - 159 Kg/m)   |





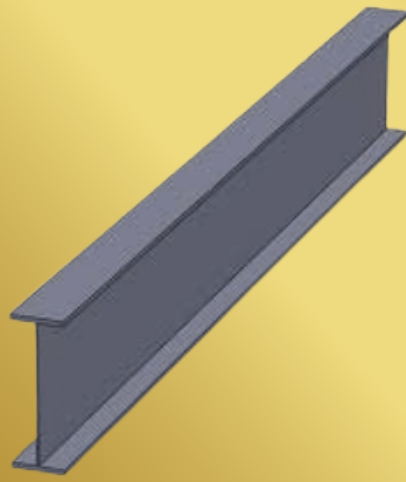
## PRODUCT DETAILS

**U-CHANNEL /  
C-CHANNEL**

**VARIANTS AVAILABLE: UPN / PFC**

**GRADE S275 / S355**

| SIZE                   |
|------------------------|
| 50 x 25 x 3.68 Kg/m    |
| 100 x 50 x 7.36 Kg/m   |
| 100 x 50 x 9.36 Kg/m   |
| 100 x 50 x 10.65 Kg/m  |
| 125 x 65 x 11.66 Kg/m  |
| 125 x 65 x 13.40 Kg/m  |
| 150 x 75 x 14.66 Kg/m  |
| 150 x 75 x 18.60 Kg/m  |
| 200 x 75 x 18.40 Kg/m  |
| 200 x 75 x 25.30Kg/m   |
| 250 x 78 x 28 kg/m     |
| 305 x 102 x 46.18 Kg/m |



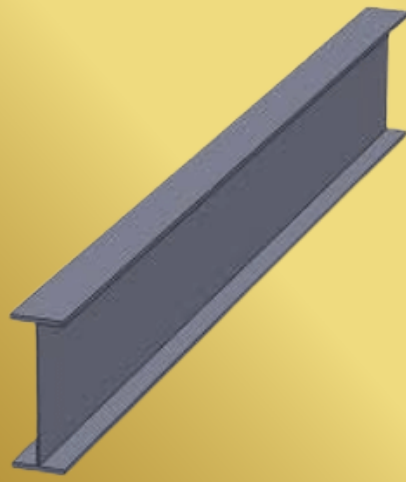
## PRODUCT DETAILS

### U-beams

GRADE S275 / S355

| SIZE                |
|---------------------|
| 127 x 76 x 13 Kg/m  |
| 152 x 89 x 16 Kg/m  |
| 178 x 102 x 19 Kg/m |
| 203 x 102 x 23 Kg/m |
| 203 x 133 x 25 Kg/m |
| 203 x 133 x 30 Kg/m |
| 254 x 102 x 22 Kg/m |
| 254 x 102 x 25 Kg/m |
| 254 x 102 x 28 Kg/m |
| 254 x 146 x 31 Kg/m |
| 254 x 146 x 37 Kg/m |
| 254 x 146 x 43 Kg/m |
| 305 x 102 x 25 Kg/m |
| 305 x 102 x 28 Kg/m |
| 305 x 102 x 33 Kg/m |

| SIZE                |
|---------------------|
| 305 x 127 x 37 Kg/m |
| 305 x 127 x 42 Kg/m |
| 305 x 127 x 48 Kg/m |
| 305 x 165 x 40 Kg/m |
| 305 x 165 x 46 Kg/m |
| 305 x 165 x 54 Kg/m |
| 356 x 127 x 33 Kg/m |
| 356 x 127 x 39 Kg/m |
| 356 x 171 x 45 Kg/m |
| 356 x 171 x 51 Kg/m |
| 356 x 171 x 57 Kg/m |
| 356 x 171 x 67 Kg/m |
| 406 x 140 x 39 Kg/m |
| 406 x 140 x 46 Kg/m |
| 406 x 178 x 67 Kg/m |
| 406 x 178 x 74 Kg/m |



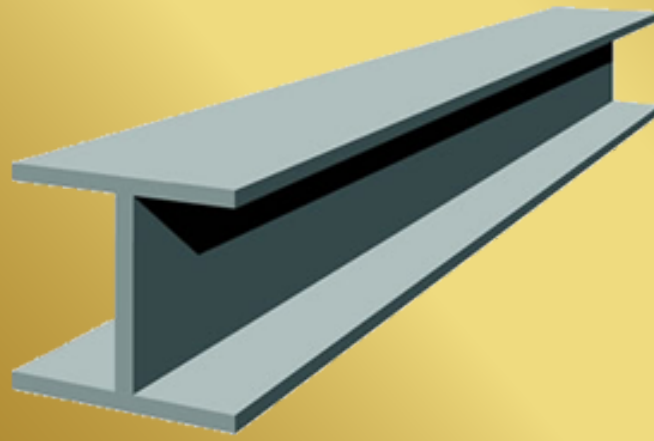
## PRODUCT DETAILS

### U-beams

GRADE S275 / S355

| SIZES                |                      |                       |
|----------------------|----------------------|-----------------------|
| 406 x 178 x 54 Kg/m  | 533 x 210 x 109 Kg/m | 838 x 292 x 176 Kg/m  |
| 406 x 178 x 60 Kg/m  | 533 x 210 x 122 Kg/m | 838 x 292 x 194 Kg/m  |
| 406 x 178 x 67 Kg/m  | 610 x 229 x 101 Kg/m | 838 x 292 x 226 Kg/m  |
| 406 x 178 x 74 Kg/m  | 610 x 229 x 113 Kg/m | 914 x 305 x 201 Kg/m  |
| 457 x 152 x 52 Kg/m  | 610 x 229 x 125 Kg/m | 914 x 305 x 224 Kg/m  |
| 457 x 152 x 60 Kg/m  | 610 x 229 x 140 Kg/m | 914 x 305 x 253 Kg/m  |
| 457 x 152 x 67 Kg/m  | 610 x 305 x 149 Kg/m | 914 x 305 x 289 Kg/m  |
| 457 x 152 x 74 Kg/m  | 610 x 305 x 179 Kg/m | 914 x 419 x 343 Kg/m  |
| 457 x 152 x 82 Kg/m  | 610 x 305 x 238 Kg/m | 914 x 419 x 388 Kg/m  |
| 457 x 191 x 67 Kg/m  | 686 x 254 x 125 Kg/m | 1016 x 305 x 222 Kg/m |
| 457 x 191 x 74 Kg/m  | 686 x 254 x 140 Kg/m | 1016 x 305 x 249 Kg/m |
| 457 x 191 x 82 Kg/m  | 686 x 254 x 152 Kg/m | 1016 x 305 x 272 Kg/m |
| 457 x 191 x 89 Kg/m  | 686 x 254 x 170 Kg/m | 1016 x 305 x 314 Kg/m |
| 457 x 191 x 98 Kg/m  | 762 x 267 x 134 Kg/m | 1016 x 305 x 349 Kg/m |
| 533 x 210 x 82 Kg/m  | 762 x 267 x 147 Kg/m | 1016 x 305 x 393 Kg/m |
| 533 x 210 x 92 Kg/m  | 762 x 267 x 173 Kg/m | 1016 x 305 x 438 Kg/m |
| 533 x 210 x 101 Kg/m | 762 x 267 x 197 Kg/m | 1016 x 305 x 487 Kg/m |





## PRODUCT DETAILS

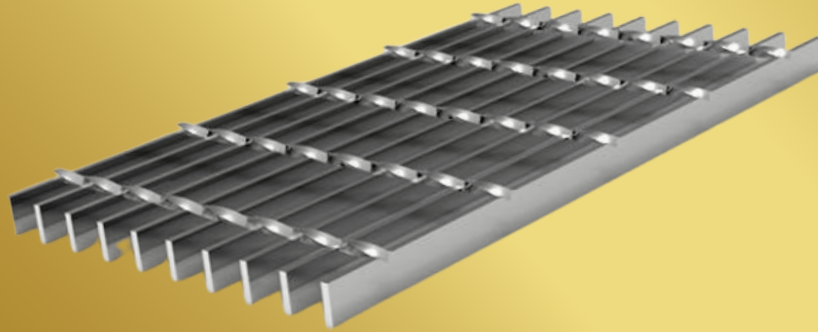
### U-Columns

GRADE S275 / S355

| SIZE                 |
|----------------------|
| 152 x 152 x 23 Kg/m  |
| 152 x 152 x 30 Kg/m  |
| 152 x 152 x 37 Kg/m  |
| 203 x 203 x 46 Kg/m  |
| 203 x 203 x 52 Kg/m  |
| 203 x 203 x 60 Kg/m  |
| 203 x 203 x 71 Kg/m  |
| 203 x 203 x 86 Kg/m  |
| 254 x 254 x 73 Kg/m  |
| 254 x 254 x 89 Kg/m  |
| 254 x 254 x 107 Kg/m |
| 254 x 254 x 132 Kg/m |
| 254 x 254 x 167 Kg/m |
| 305 x 305 x 97 Kg/m  |
| 305 x 305 x 118 Kg/m |
| 305 x 305 x 137 Kg/m |

| SIZE                 |
|----------------------|
| 305 x 305 x 158 Kg/m |
| 305 x 305 x 198 Kg/m |
| 305 x 305 x 240 Kg/m |
| 305 x 305 x 283 Kg/m |
| 356 x 368 x 129 Kg/m |
| 356 x 368 x 153 Kg/m |
| 356 x 368 x 177 Kg/m |
| 356 x 368 x 202 Kg/m |
| 356 x 406 x 235 Kg/m |
| 356 x 406 x 287 Kg/m |
| 356 x 406 x 340 Kg/m |
| 356 x 406 x 393 Kg/m |
| 356 x 406 x 467 Kg/m |
| 356 x 406 x 551 Kg/m |
| 356 x 406 x 634 Kg/m |



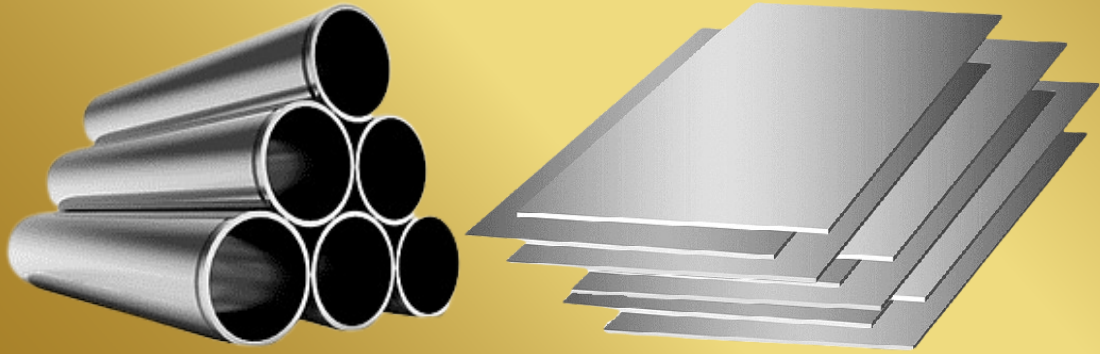


## PRODUCT DETAILS

### Gratings

- GRADE S275 (GALVANIZED)
- OUTSIDE DIMENSION: 90 x 600 cm
- GAP SIZE: 100 x 40 mm

| SIZE      |
|-----------|
| 25 x 3 mm |
| 25 x 4 mm |
| 30 x 3 mm |
| 30 x 4 mm |
| 38 x 3 mm |
| 38 x 4 mm |
| 50 x 4 mm |



## PRODUCT DETAILS

### STAINLESS STEEL MATERIALS

- **GRADE SS 304 AND SS 316**
- **AVAILABLE IN PLATES AND HOLLOW SECTIONS**
- **AVAILABLE ON CUSTOM ORDERS OF HIGH VOLUME**





# ***JABROOT BLACKSMITH & WELDING WORKSHOP CO.***

## **STEEL PRODUCTS MANUFACTURING & FABRICATION SERVICES**

**THIS DIVISION CONSISTS OF DIFFERENT BRANCHES. IN ONE, WE ARE SPECIALIZED IN MAKING TRANSPORTATION TANKERS LIKE DIESEL/ DRINKING WATER/ NON-DRINKING WATER/ SEWAGE. OTHER THAN THAT WE ALSO MANUFACTURE, REMODEL & REPAIR HEAVY VEHICLE CHASSIS, TRAILERS, PICKUP BODIES. WE ALSO MAKE OTHER PRODUCTS LIKE METAL PALLETS & TRAYS, STORAGE CAGES, FUEL TANKS & MORE.**

**ON THE OTHER DIVISION, WE PROVIDE FABRICATION SERVICES. (LOOK BELOW TO FIND OUT MORE)**



# SOME OF THE PRODUCTS MANUFACTURED BY US



## DIESEL TANKER

## NON-DRINKING WATER TANKER/ SEWAGE



## DRINKING-WATER TANKER



## CHASSIS



## FUEL STORAGE TANKS





# METAL PALLETS



# STORAGE CAGES

# METAL TRAYS



# METAL TOOL-BOX



CONSTRUCTION ELEVATORS

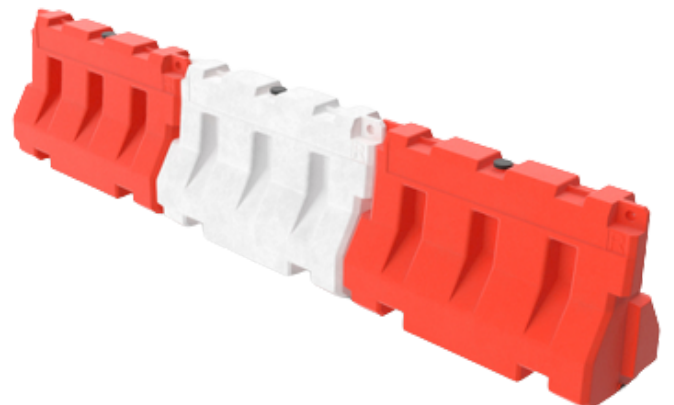
STEEL CYLINDERS



PICK-UP BODY



STRUCTURAL BODY FOR TRAFFIC BARRICADES



AND MORE....



# SERVICES & FACILITIES



WELDING

HYDRAULIC PRESS  
BENDING



METAL SHEET  
SHEARING



ROLLING





PIPES & SECTIONS  
ROLLING

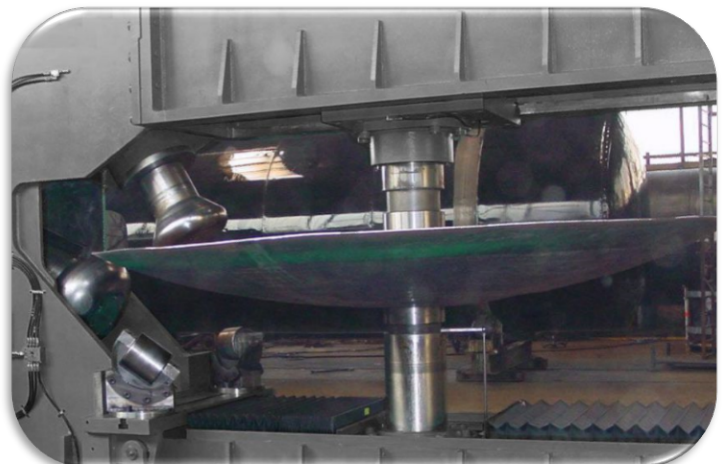
IRON WORKER



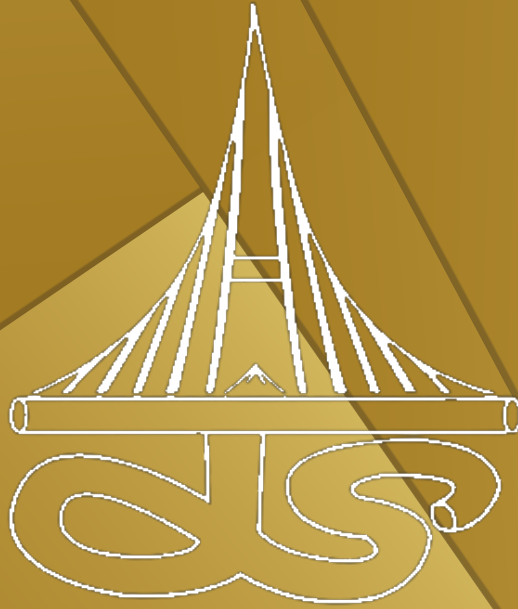
GAS CUTTING  
(AUTO / MANUAL)



STEEL SHEET  
DISHING /  
FLANGING







# JABROOT STEEL

*Quality & Reliability at its best*