

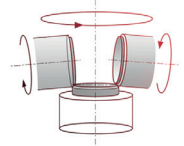
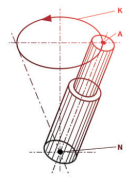
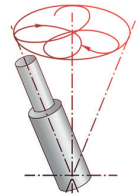
BalTec

Machines for joining technology

Riveting | Joining | Rollerforming

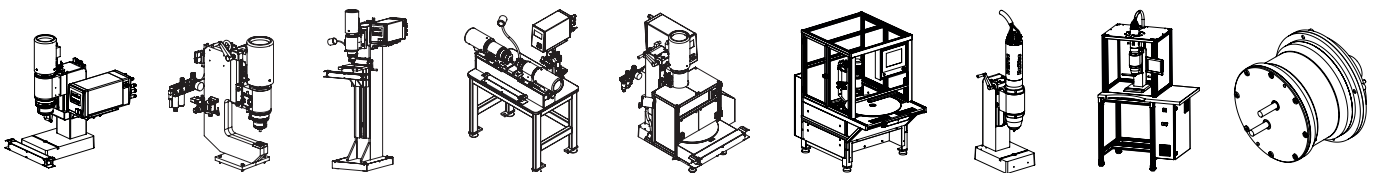
Our joining processes

Basically, the application determines the process. The radial process (forming tool follows a rosette-shaped movement) is often the preferred process, as high quality results can be achieved with low force, low cycle time and minimal load being applied to the workpiece. In the case of the orbital process, the axis of the tool follows a circular motion. With the deformation around the rivet circumference, a crescent-shaped rivet head is formed. This process works well in tubular or semi-tubular applications. The roller forming process is able to form small radii on thin wall work pieces with a large diameter, ideal in cases where a connection needs to be tight seal.

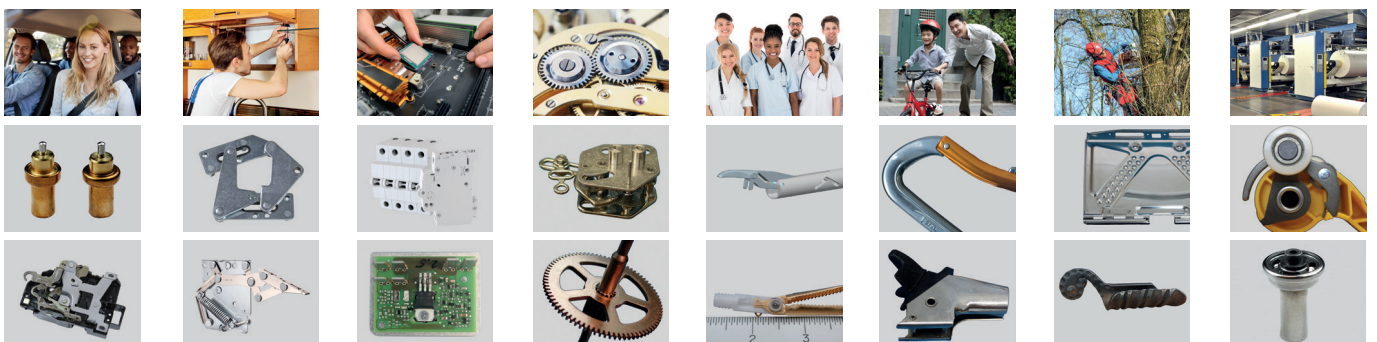


Our products

The core of all our machines is the pneumatically, hydraulically or electrically driven unit. BalTec currently offers 24 different models with a force range from 0.5 to 100 kN. All units can be integrated into systems and installed in any orientation, thus offering maximum flexibility. Different designs – with or without process control, plus a variety of accessories complete the product range.



Industries & applications



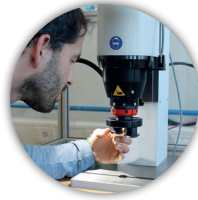
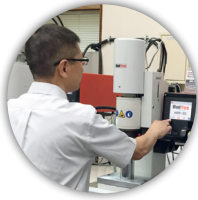
Our services

BalTec offers in-house manufactured, high-quality spare parts & forming tools. The long service life of the forming tools are known and appreciated in the industry. Standard spare parts are available from stock. Furthermore, BalTec offers repair services and product training in one of BalTec's own technology centers or in your production facility.



Our technology and competence center

In order to find the perfect solution for your individual requirements, BalTec conducts feasibility studies regarding material, forming technique, force, cycle time and more. In cooperation with you, a most suitable solution is developed from a technical as well as an economic point of view.



Direct operations & many representatives

BalTec is represented worldwide through 7 direct operations (Switzerland/Germany, France, Great Britain/Ireland, USA/Canada/Mexico, Brazil, China and Italy) and 40 representatives. Due to our diversified sales & support network distributed throughout the world, we can offer professional service local to you.

BalTec

US Headquarter

BalTec Corporation
121 Hillpointe Dr. Suite 900
Canonsburg, PA 15317, USA
Phone: 724-873-5757
info.us@baltec.com
www.balteccorporation.com

Headquarter

BalTec AG
8330 Pfäffikon (ZH), Switzerland
Tel. +41 44 953 13 33
baltec@baltec.com | www.baltec.com

The BalTec Group: Switzerland / Germany

BalTec AG

France

BalTec France
Rambouillet, France

Italy

BalTec Italia S.r.l.
Schio (VI), Italy

Great Britain / Ireland

BalTec (UK) Ltd.
Reading, Berkshire, Great Britain

Brazil

BalTec do Brasil LTDA
Jundiaí, Brasilien

China

BalTec Machinery Ltd.
Shanghai, P.R. China

USA / Canada / Mexico

BalTec Corporation
Canonsburg, PA, USA



SWISS MADE

JOINING IS OUR BUSINESS – WORLDWIDE

BalTec