



Joslin Diabetes

COVID-19 (Novel Coronavirus) Update

March 25, 2020

Joslin Colleagues:

There is some good news to share. As you all know, we sent several colleagues home for self-isolation due to a confirmed employee case on Monday, March 16. So far, no one sent home has developed the virus and the employee who tested positive is recovering well. We have continued to reach out to this group of colleagues and are heartened by this news.

As many of us have been required to work from home via the new stay-at-home order by Governor Baker, still many of us considered essential personnel have been reporting to work. It can't be said enough-- we know what it takes to do that during this time and we are incredibly grateful for your dedication.

Updates:

- **By the end of this week, the Clinic will have moved all patients to remote visits with the exception of a few who must be seen in person at The Beetham Eye Institute.** Thanks to all those who have made this possible.
- Today, **Governor Baker today extended school closures** for the entire Commonwealth until **May 4**.
- Also, as of today, all staff, patients, and any other essential visitors to the building will be required to wear a mask. **Masks are being given out by the JCCs from 7 a.m. – 5 p.m. in the main lobby.** You must present your employee badge to the JCC.

CDC recommendations for the use of masks are as follows:

- The facemask should be removed and discarded if soiled, damaged, or hard to breathe through. If you need another one, go to the desk at the entrance to get another one but in most cases one mask should last all day.
- Please take care not to touch your mask. If you inadvertently touch or adjust it, you must immediately wash your hands thoroughly for 20 seconds.
- If and when you need to remove or replace your mask you should first leave any patient care area, then remove, properly discard, and replace your mask.

Patient and staff safety will continue to be our highest priority and we thank everyone for their ongoing cooperation.

- Mayor Marty Walsh of Boston announced today that **many commercial parking garages in Boston are lowering rates for essential workers.** More information can be found at <https://www.boston.gov/news/discounted-garages-available-hospital-staff-boston>

Reminders:

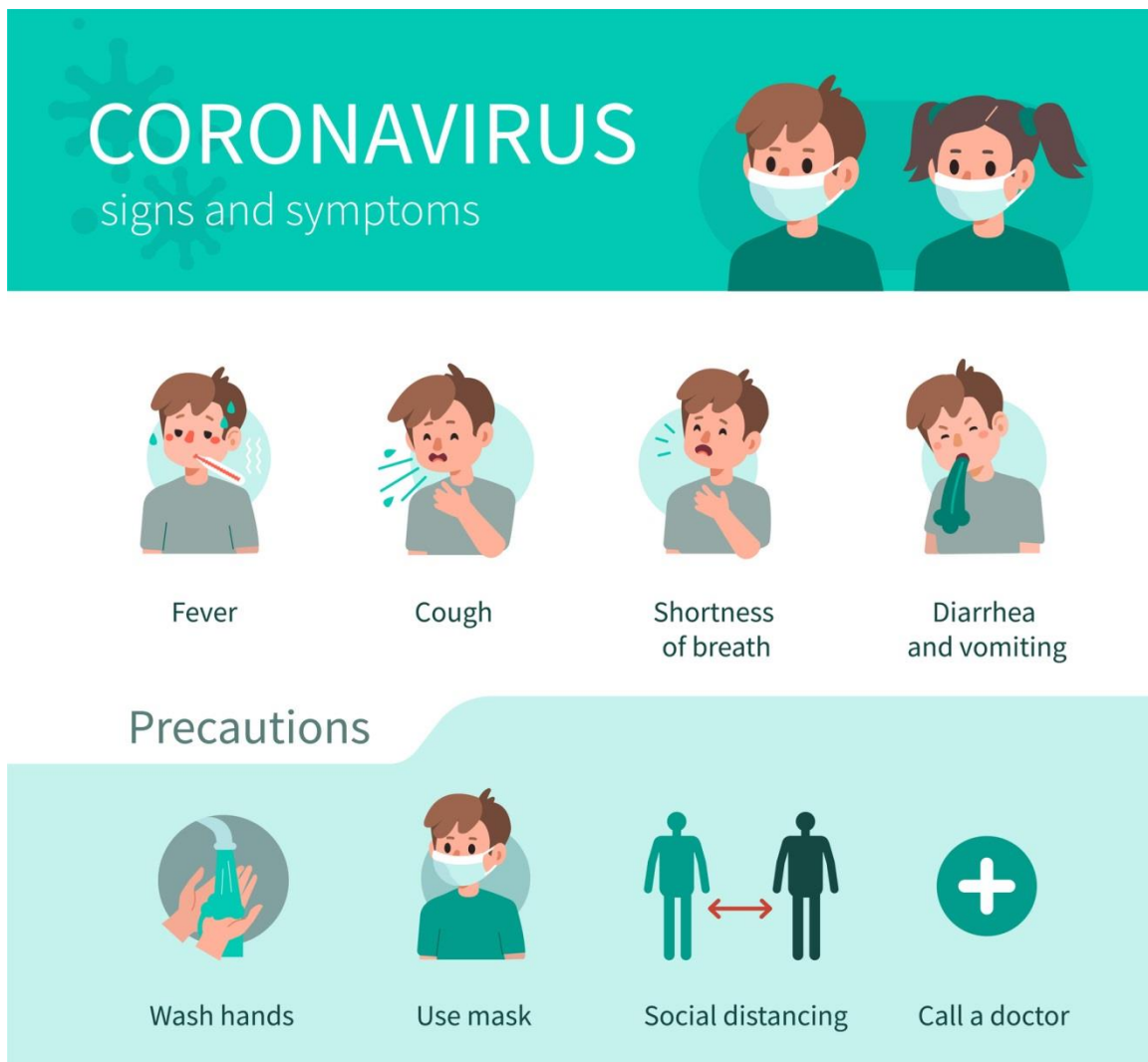
- **Governor Baker's order allows essential services to stay open** --healthcare orgs., grocery stores, pharmacies, etc.-- but also **limits gatherings to no more than 10 people** at a time and recommends standing/sitting at least six feet apart. The order stands from **now until at least Noon on April 7 at which time there will be a re-assessment.**

- **If you are working remote**, again, please **do not use Citrix** for email and log off all programs when you are not using them. Email ITServiceDesk@joslin.harvard.edu for help.
- Please continue to read **federal, state and city official websites for the latest, most accurate information**. These include: [CDC.gov](https://www.cdc.gov); [Mass.gov](https://www.mass.gov), [Boston.gov](https://www.boston.gov) and [Whitehouse.gov](https://www.whitehouse.gov). Massachusetts also has a 2-1-1 hotline and associated [Mass211.org](https://www.mass211.org) website.
- **Questions for Joslin's Coronavirus Committee** should be sent to Health.Alert@joslin.harvard.edu

Please guard your health by continuing to follow these practices:

- STAY HOME AND AWAY FROM OTHERS IF YOU ARE SICK.
- WASH YOUR HANDS THOROUGHLY AND FREQUENTLY.
- AVOID TOUCHING YOUR EYES, NOSE AND MOUTH WITH UNWASHED HANDS.
- COVER YOUR COUGH OR SNEEZE WITH TISSUE OR ELBOW.
- MAINTAIN SOCIAL DISTANCING FROM OTHERS OF SIX FEET OR MORE.

Here's a handy graphic to share with family and friends.



Thank you,

Roberta Herman, MD, President and CEO

The Joslin Coronavirus Committee