

Meeting Info:

Meeting location:
8361A Dayton Pike
Soddy Daisy, TN
(Horsin' Around)
At 1:00 p.m. Sat.
Sept. 16, 2023

IN THIS ISSUE

Sept Demonstrator	1
August meeting	2
Officers	3
Sponsors	
Treasurer's report	4
The Web	
Club challenges 2023	
In Memory	5
Useful Ideas TTT	
Safety	6
Show & Tell Pictures	

Sept. Demonstrator

Jeffrey Mead



Tri-State Woodturners
An official AAW chapter

Using 100% locally salvaged wood, the materials used in my work are all from storm damage, or emergency removal trees. Through this process, the trees legacy is saved, and its life remains constant. Salvaged wood-working is also a form a sequestering carbon, as rotting wood/decaying forests result in over 10 billion tons of carbon emissions every year. The wood used in my work is still very green, or fresh. During the practice of once turning green wood, the material now has its chance to speak, as the wood dries, it twists and warps, resulting in an elegance that simply cannot be duplicated through any other process. Most of the wood sourced has "defects", rot, and cracks, these signs of distress are usually the highlights of my work, just like in life without the ugly, there is no beauty.

My obsession with nature, the balance between wonder, and certitude has led me down a very unique, and rather unusual path. Driven by the natural world that surrounds me, it is the same balance of imagination, and order, that drives the inspiration



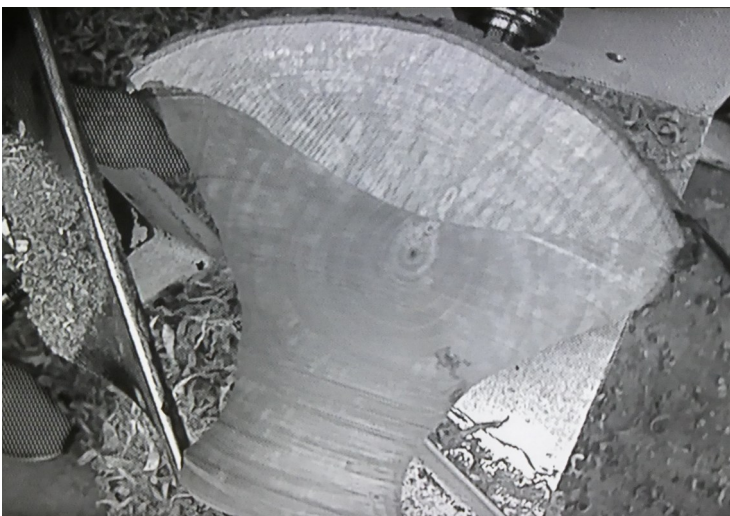
behind my work. The material must guide me, I cannot force it. Wood is a teacher, and I am its student. In the past, I've taken more traditional routes in the woodworking world, though it wasn't until discovering how much this material in fact, does not want to be cut perfectly and fit tightly, that I really wanted to discover what it had to say, in its most organic glory.

The demonstration at TSW Saturday, September 16, is on turning a spouted or teapot form, starting with a normal blank, and leaving a band to then carve features from, much like a footed bowl. You can see more of Jeffrey Mead's work at:

<https://dkgallery.us/artist/jeff-mead>

Aug. Demonstration

Doug Spohn demonstrated how to turn a thin bowl and suggested the piece to the right would be a good shape and size with which to start. He began with a log and suggested leaving the pith in the piece for added character. In addition to the appearance of thin walled turnings it is necessary to be thin if the piece is going to be pierced. Doug used a Hunter carbide tool to remove material in steps on the inside.



Other thin wall turnings Doug showed →

Donation Projects



President, Doug Spohn

TSW CLUB OFFICERS

Doug Spohn President
(423)240-4386 djspohn@epbfi.com

Jerry Schnelzer Vice President
(423)280-9757 Jerry.Schnelzer@gmail.com

John Fortmiller Treasurer
(423)280-5904 Leowen@Epbfi.com

John Dekle Secretary/Newsltr Editor
(423) 508-8051 Turning411@Yahoo.com

Doug Spohn Program Director
(423) 240-4386 djspohn@epbfi.com

Most above officers are official
Tri-state Woodturner Mentors



Don't forget the opportunity to give to others by turning one of the donation projects; Beads of Courage Box, Pens for the Troops or Ornaments.



NEW MEMBER MENTOR: Are you new to wood turning or at least have an interest in it? TSW provides an opportunity for you to learn from other turners who are willing to give you personal instruction and guidance. There is no fee for this instruction for TSW members. Contact one of the listed officers who will guide you to select a helpful mentor for you.

The following sponsors give generously to Tri-State Woodturners and we want to encourage members to support them generously



5824 Brainerd Rd., Chatt. TN 373411 + (423) 710-8001



CRAFT SUPPLIES USA
THE WOODTURNERS CATALOG

www.woodturnerscatalog.com +(800)551-8876

Treasurer's Report



The Web

Beginning Balance August		4,132.93
Income		124.00
Raffle	64.00	
Dues	60.00	
Expenses		1,757.06
Lathes	1,100.00	
AV Equipment	587.06	
Rent	70.00	
Ending Balance August		2,499.87

When you plan on doing the challenge for the month, if you have questions about making it or want to see some pictures go to the web. For example if making a stethoscope for this month is confusing look up antique or original stethoscopes on the web and you can find pictures that will assist. There are numerous videos on how to make a door stop. The same would be true for next month's novice challenge of an ornament or to turn a wooden bell. I've mentioned before and repeat the suggestion to keep an Idea Notebook of things you may turn in the future. I have several articles on each of these topics in notebooks.

2023 TSW Club Challenges

If you are a novice or beginner turner you may do the Novice Challenges or the Confident Turner Challenge. There is also the option to turn what was demonstrated the previous month.

Novice Turner		Confident Turner
Awl—1	Jan	Awl—4
Pen—2	Feb	Candle Holder w/Glass Globe—8
Jewelry—3	Mar	Acorn Lidded Box—8
Bottle Stopper—2	Apr	Pen/Pencil (w/o a kit) -5
Tooth Pick Holder—3	May	Fishing Lure—3
Napkin Ring—4	June	Baby Rattle—3
Scoop—3	July	Flask—1
Weed Pot— 1	Aug	Plant Stand—2
Door Stop	Sep	Stethoscope
Ornament	Oct	Bell
Salt/Pepper Shaker	Nov	Yoyo



In Memory

Our sincere sympathy goes out to Johnny Renfro in the loss of his wife, Lynn, this past month (August 13). Johnny has been a very active member of TSW for a number of years and has been keeping the club well supplied with ornaments and pens for the troops. A year ago he hosted the Sawdust Session in his workshop in Hixson. For those who attended that session you got to see some of his unique work. We are sorry for your loss, Johnny, and keep you in our prayers. I know Lynn suffered a lot recently and today she is in a better place but your loss still remains and we pray for God's comfort.

jrenfro206@gmail.com, 423-322-2350, 4604 Eldridge Rd., Hixson, TN 37343

Useful Idea, Tips, Tools & Techniques

You may wonder what does this RV have to do with woodturning? Did you know about 1 million people in the USA live full-time in RVs. Naturally, their space is very limited so they use it wisely. Recently listening to the Youtube channel, *All about RVs*, Jared Gillis, who lives full-time in an RV with his family of four made the statement they have a rule: "Don't put it down, put it away."

You've never experience the challenge of trying to find something have you? It happens to me too frequently and often it is something I just had in my hand. I'm trying hard to learn this principle, Don't put it down, put it away. Of course there are times in the middle of a project when it's not practical but once a project is done I try to put everything back where it belongs. A place for everything and everything in it's place.





Safety Tips

Projects often call for more than one tool. When repetitively changing back and forth between a couple tools it is so convenient to lay them on the ways of the lathe. That's not the safest place for them, as we all know. Often they are round and their handles are round and with the vibration of the lathe running round things have a tendency to roll. Murphy's law dictates they should always land sharpened edge down. That's hard on a sharp edge to say nothing about your foot which too often takes a blow in such circumstances if not the cement floor.

Solution:

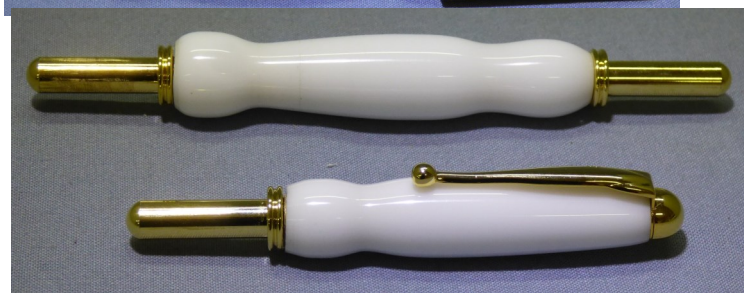
I made a small table on wheels that fits to the right side of my lathe with slight edges which helps keep tools from rolling off onto the floor. It's very convenient and becomes a great place for tools not being in use at the moment but will be needed soon. Such a table might be very useful for you and not all that hard to make.



Show and Tell



Terry Pearson turned these
 ← Pens for troops
 Weed pot →
 and the two seam
 ← rippers



Show and Tell



Allen Quandee ↑ turned the items above
← and to the left



Barton Crowell
made the
weed pot →
← & ring bowl



Show and Tell



Charles Jennings
Crafted these
large items in his
studio



Show and Tell



Items on this page were all created by John Dekle



Show and Tell



These items on the top were turned by Jerry Schnelzer

Bottom two items were made by Tim Mehling



Show and Tell



The two large wall hanging art pieces were designed and made by Ed Lewis

Gary Farlow ↓ Walnut bowl



Ron Plumley ↓ Cherry plant stand



Seth Eichenburger made the lidded bowl and pens for the troops pictured here →



Show and Tell



Michael Anderson
created all of these
Beautiful items

