



# Certificate of Analysis

**CANNABUSINESS LABORATORIES, LLC**

**Customer:**

PJ Smith Enterprises, LLC  
PO Box 685  
New Castle , KY 40050

Sample ID **240418007**  
Order Number **CB240418004**  
Sample Name **CBD Oil 2400mg**

External Sample ID

Batch Number **J225E**

Product Type **Other**

Sample Type **Other**

Received Date **4/18/2024**

COA Released **4/19/2024**

Comments

## CANNABINOID PROFILE

Analyte	LOQ (%)	% Weight	mg/mL
CBC	0.01	0.176	1.637
CBD	0.01	4.082	37.96
CBDa	0.01	0.023	0.213
CBDV	0.01	0.024	0.224
CBG	0.01	0.716	6.662
CBGa	0.01	ND	ND
CBN	0.01	ND	ND
d8-THC	0.01	ND	ND
d9-THC	0.01	0.140	1.306
THCa	0.01	ND	ND
<b>Total Cannabinoids</b>		<b>5.162</b>	<b>48.00</b>
<b>Total Potential THC</b>		<b>0.140</b>	<b>1.306</b>
<b>Total Potential CBD</b>		<b>4.102</b>	<b>38.15</b>
<b>Total Potential CBG</b>		<b>0.716</b>	<b>6.662</b>

**Ratio of Total Potential CBD to Total Potential THC 29.30 : 1**

**Ratio of Total Potential CBG to Total Potential THC 5.11 : 1**

*\*Total Cannabinoids refers to the sum of all cannabinoids detected.*

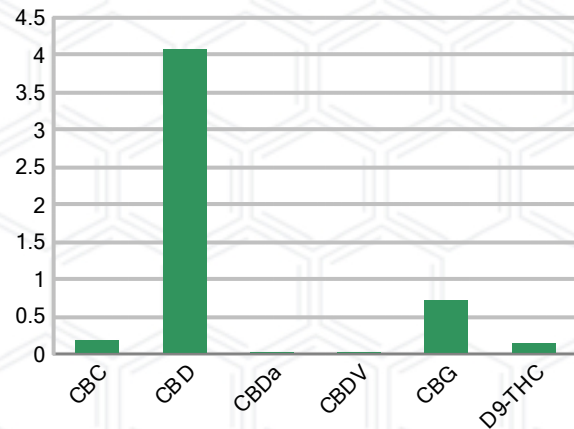
*\*Total Potential CBD = (0.877 x CBDa) + CBD. \*Total Potential THC = (0.877 x THCa) + THC. \*Total Potential CBG = (0.877 x CBGa) + CBG.*

*\*Total Potential THC/CBD are calculated to take into account the loss of an acid group during decarboxylation.*

## SAMPLE IMAGE



## CANNABINOIDS % Weight



*J. Hobgood*  
Laboratory Manager

SIGNATURE

Jamie Hobgood

LABORATORY MANAGER

04/19/2024 1:08 PM

DATE

This product has been tested by CannaBusiness Laboratories using validated testing methodologies and a quality system. Values reported relate only to the product tested. CannaBusiness Laboratories makes no claims as to the efficacy, safety, or other risks associated with any detected or non-detected levels of any compounds reported herein. This Certificate shall not be reproduced except in full, without the written permission of CannaBusiness Laboratories. Photo is of sample received by the lab and may vary from final packaging. The results apply to the sample as received.



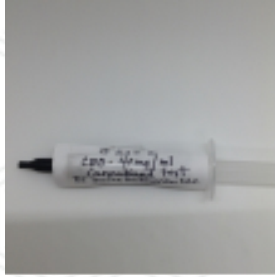


# Certificate of Analysis

## CANNABUSINESS LABORATORIES, LLC

### Customer

PJ Smith Enterprises, LLC  
 PO Box 685  
 New Castle, KY 40050



**Sample Name:** CBD Oil 2400mg

**Sample ID:** 240418007

**Order Number:** CB240418004

**Product Type:** Other

**Sample Type:** Other

**Received Date:** 04/18/2024

**Batch Number:** J225E

**COA released:** 04/19/2024 1:08 PM

Potency (mg/mL)			
Date Tested: 04/18/2024		Method: CB-SOP-028	
Instrument:			
<b>0.140 %</b>	<b>4.102 %</b>	<b>5.162 %</b>	<b>48.00 mg/mL</b>
Total THC	Total CBD	Total Cannabinoids	Total Cannabinoids

Analyte	Result	Units	LOQ	Result	Units
CBC (Cannabichromene)	0.176	%	0.010	1.637	mg/mL
CBD (Cannabidiol)	4.082	%	0.010	37.96	mg/mL
CBDa (Cannabidiolic Acid)	0.023	%	0.010	0.213	mg/mL
CBDV (Cannabidivarin)	0.024	%	0.010	0.224	mg/mL
CBG (Cannabigerol)	0.716	%	0.010	6.662	mg/mL
CBGa (Cannabigerolic Acid)	ND	%	0.010	ND	mg/mL
CBN (Cannabinol)	ND	%	0.010	ND	mg/mL
D8-THC (D8-Tetrahydrocannabinol)	ND	%	0.010	ND	mg/mL
D9-THC (D9-Tetrahydrocannabinol)	0.140	%	0.010	1.306	mg/mL
THCa (Tetrahydrocannabinolic Acid)	ND	%	0.010	ND	mg/mL



*J. Hobgood*  
 Laboratory Manager

Jamie Hobgood

04/19/2024 1:08 PM

SIGNATURE

DATE

NT = Not tested, ND = Not detected; LOQ = Limit of Quantitation; <LOQ = Detected; >ULOL = Above upper limit of linearity; CFU/g = Colony forming units per 1 gram; TNTC = Too numerous to count

This product has been tested by CannaBusiness Laboratories using validated testing methodologies and a quality system. Values reported relate only to the product tested. CannaBusiness Laboratories makes no claims as to the efficacy, safety, or other risks associated with any detected or non-detected levels of any compounds reported herein. This Certificate shall not be reproduced except in full, without the written permission of CannaBusiness Laboratories. Photo is of sample received by the lab and may vary from final packaging. The results apply to the sample as received.