

All the News Not Fit for Social Media

INSIDE

From the Campaign

Latest News From the Campaign

Local News

BIOB Chatter

Feedback

The readers feedback



From the Campaign

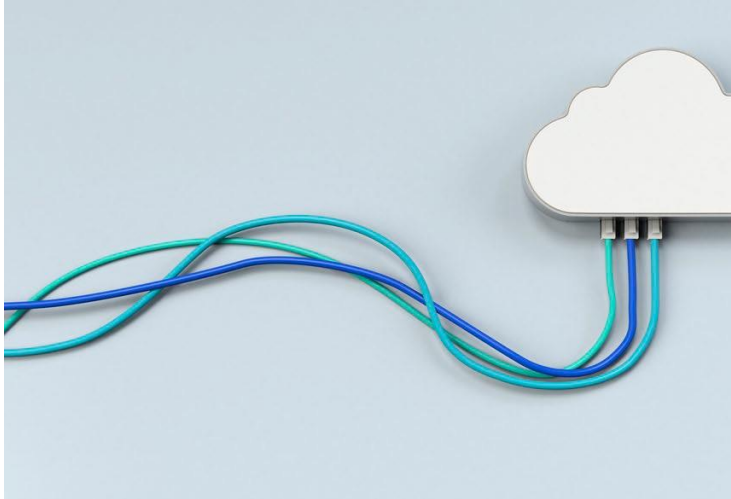
Candidate Eirc Montgomery Speaks at the County Board Meeting

The county commission agenda included the contract between the county and Panacea Global Energy. Eric stood in opposition to the contract and called out a few issues with the contract. No residency requirement and a low salary number that qualifies it as a high paying job. He mentioned that many jurisdictions are writing requirements into the contracts that guarantee the company receiving the taxpayer larges must support community programs. No other residents stood in opposition and after a brief rah rah discussion the motion passed, The first district commissioner whose district the project will be built did not attend the meeting.

Fox 35 Orlando Story

[Development near Poinciana SunRail site approved by Osceola County commissioners](#)

What may be more impacting to the 3rd District during the usual discussions that followed the published agenda the District 3 commissioner discussed the high cost of the Reeves Road extension, over 280 million, due to the requirement to have the entire length raised for environmental reasons. That is why the Koa Street Extension is a better option. [Koa Street Proposal](#) I presented shows a shorter more cost-effective solution.



BIOB Chatter

The board presented three options for the replacement of the current contract with Spectrum.

Hotwire:

1 Gig Up and Down Fiber

Extra wireless hubs are an added cost.

Blue Stream:

1 Gig Up and Down Fiber

Will tune the home with as many hubs as required.

Spectrum:

Mixed Media

Not symmetrical speeds but 1 Gig download

Can stay with current equipment.

The Finance team is working to determine who to go with.

The Charter Town Hall was very rambunctious as several wanted to have current issues discussed.

Customer service for bulk customers:

1 855 326 5115

For all future meetings I suggest Roberts Rules are used and enforced.

What is with the gates:

The gates are our front door. Every time I enter the Bellalago side of community I see more speed bumps, more signage, and delays in propagating the bar code read to the opening mechanism. What is the root cause of this? The current approach is to put band aids on an old system that may not be able to handle the current traffic load. We are at the point if we have one failure, one difficult guest or vendor the delays can stretch into more than 30 minutes. What is the root cause? Is it just a plain capacity issue? Due to the limit on bar codes to 5 (not 5 cars as in the past) the right lane of the south resident gate is severely underutilized. This effectively limits the much larger Bellalago side to the same number of entry lanes as the Isle Of Bellalago side. The Borad and Safety and Security Committee are reluctant to talk data so it makes it difficult to scientifically work to a solution. From next door posted by local expert an experts view of access control: [The Expert Talks Access Control](#)

What our potential buyer sees first

