

Rear Skid Plate + Receiver Hitch Extension + Transmission Cover

Installation

- 1) Remove existing rear plate, taking out the four bolts circled in red in Figure 1.
- 2) Loosen the six bolts (Figure 2) so that roughly ½” of thread is showing – **DO NOT REMOVE THESE BOLTS. THIS IS A VERY IMPORTANT STEP DUE TO THE VARIANCE IN THE REAR OF THE RTV-X. BY LOOSENING THESE BOLTS WE ARE ABLE TO COMPENSATE FOR THIS VARIANCE.**
- 3) Take the new protective plate and slide it into your RTV-X's rear receiver hitch.
- 4) **IMPORTANT** Make sure you have installed your bent hitch pin fully before the next step. The cotter pin is to also be fully installed and should look like figure 3.
- 5) Using the four bolts you took out in Step 1, bolt your new plate down to 10 ft./lbs. of torque.
- 6) Once the Skid Plate is fully bolted on, tighten the six bolts loosened in Step 3 (shown in Figure 2).
- 7) After installation is complete please have your dealer install the Warning Label (Part #K7591-65452)
- 8) If needed, a Spud Wrench, a screwdriver, a center punch or another tool may be used for the hole alignment in this installation. Insert through one hole to line up the other hole on that side. Bolt through the hole that is lined up. Do the same with the other holes until all holes have been aligned and bolted through. A clamp may also be necessary.

The completed installation should look like Figure 5 (Image includes our Transmission Cover – UTV-XTC). If you have any questions regarding the installation please feel free to email us at utvhitchworks@gmail.com or call 513-260-3705 and we will be happy to help. You can see a detailed video of the installation on either our website (<http://utvhitchworks.com/product/rear-skid-plate-receiver-hitch-extension>) or on YouTube (<http://youtu.be/o8EtC6BhLU>). We have seen a couple of RTV-X vehicles where the Receiver Hitch was not completely straight. Additional work may be required for installation if this is the case.

The Transmission Cover from UTV Hitchworks is designed to work with either Kubota's factory plate or the Receiver Hitch Extension + Skid Plate from UTV Hitchworks. If the Receiver Hitch Extension + Skid Plate was purchased it must be installed prior to installing the Transmission Cover.

- 1) Remove the silver muffler mounting bracket (some newer models do not have this) Also remove the upper 2 bolts on the rear plate as shown in Figure 4
- 2) Install the supplied bracket using the supplied bolts (please refer to figure 6) Tighten fully.
- 3) Align the Transmission Cover like shown in figure 5 and 7
- 4) Insert the bolt that you received with the transmission cover as well as the 2 existing bolts you took out in step 1, Refer to Figure 7. Hand tighten only at this time.
- 5) Raise the dump bed fully. There should be clearance between the dump bed and the Transmission Cover. If the dump bed hits the Transmission Cover, simply loosen the bolts from step 1, adjust the Transmission Cover, then re-tighten the bolts. There should be approximately 1/16” clearance all around the transmission.
- 6) Tighten the bolts to the proper torque rating – 39 IN/lbs or 4.5 Ft/LBS with a 12 mm socket and 60 IN/lbs or 5-6 FT/LBS with a 14 mm socket

The completed installation should look like Figure 7. If The Receiver Hitch Extension + Skid Plate was also installed, please refer to Figure 5 for an image of how the final installation should look. If you have any questions regarding the installation

REV. 01

please feel free to email us at utvhitchworks@gmail.com or call 513-260-3705 and we will be happy to help. You can see a detailed video of the installation on either our website (<http://utvhitchworks.com/product/rtv-xtransmission-cover/>) or on YouTube (<https://youtu.be/PbueY504b1l>).

Rear Skid Plate + Receiver Hitch Extension + Transmission Cover Installation



Figure 1

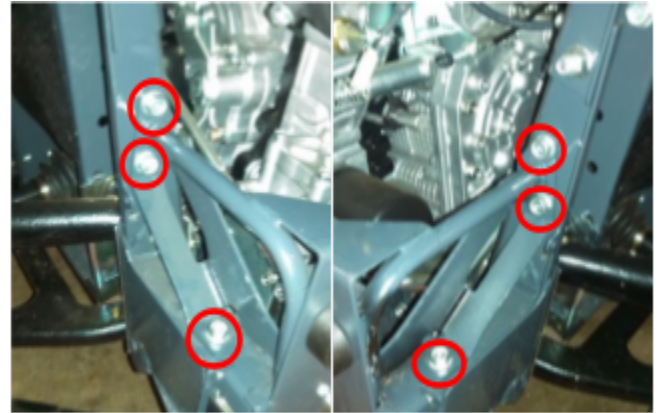


Figure 2



Figure 3



This Pin MUST be installed in the factory receiver hitch. This is vital for the strength of the receiver hitch extension.

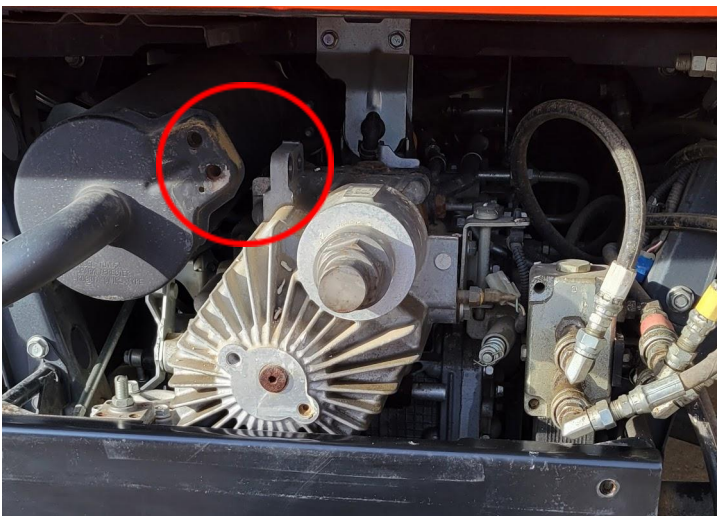


Figure 4



Figure 5

